

ACDEU **Priming Assisted Centrifugal Pump**  
**Diesel Engine Driven**  
**Models PA4A60-F3L 1011 and PA4A60-F3L 1011-A**  
**Size 4" x 4"**



Total Head		Capacity of Pump in U.S. Gallons per Minute (GPM) at Continuous Performance			
P.S.I.	Feet				
49.4	114	220	220	220	220
47.7	110	290	290	290	290
43.4	100	370	440	460	460
39.0	90	380	510	595	610
34.7	80	385	528	645	720
30.4	70	390	530	652	775
26.0	60	396	535	656	785
21.7	50	400	540	660	795
17.3	40	405	545	662	805
13.0	30	410	550	666	815
<b>Suction Lift</b>		<b>25'</b>	<b>20'</b>	<b>15'</b>	<b>10'</b>



PA4A60-F3L 1011 SHOWN

**PUMP SPECIFICATIONS**

**Size:** 4" x 4" NPT (102 mm x 102 mm) - Female.  
**Casing:** Gray Iron No. 30. Maximum Operating Pressure 85 psi (6 kg/cm<sup>2</sup>).\*  
**Open Type, Two Vane Impeller:** Ductile Iron No. 65-45-12. Handles 3" (76 mm) Diameter Spherical Solids.  
**Impeller Shaft:** Alloy Steel No. 4140.  
**Replaceable Wear Plate:** Steel No. 1018.  
**Intermediate Bracket:** Gray Iron No. 30.  
**Seal Plate:** Gray Iron No. 30.  
**Seal:** Mechanical, Oil-Lubricated, Double Floating, Self-Aligning. Silicon Carbide Rotating and Stationary Faces. Stainless Steel No. 316 Stationary Seat. Fluorocarbon Elastomers (DuPont Viton® or Equivalent). Stainless Steel No. 18-8 Cage and Spring. Maximum Temperature of Liquid Pumped 160°F (71°C).\*

\* Consult Factory for Applications Exceeding Maximum Pressure and/or Temperature Indicated.

**Shaft Sleeve:** Alloy Steel No. 4130  
**Priming Chamber:** Gray Iron No. 30.  
**Discharge Check Valve:** Gray Iron No. 30 Housing. Buna-N Flapper.  
**Radial Bearing:** Open Single Ball.  
**Thrust Bearing:** Open Double Ball.  
**Bearing Lubrication:** Oil.  
**Flanges:** Gray Iron No. 30.  
**Gaskets:** Vegetable Fiber, PTFE, Resistant Synthetic Rubber, and Cork.  
**O-Rings:** Buna-N.  
**Hardware:** Standard Plated Steel.  
**Bearing and Seal Cavity Oil Level Sight Gauges.**

**PA4A60-F3L 1011-A ONLY:** Liquid Level Controls: Submersible Transducer\* and Electronic Pressure Switch (EPS) Control with Start/Stop Set Point Adjustments for Automatic Filling/Emptying.

\* 50 Ft. (15 m) Standard Length; 150 Ft. (46 m) Maximum; Specify Length at Time of Order.

**Standard Equipment:** Belt-Driven Air Compressor. Hoisting Bail. Skid Base. Strainer.

**Optional Equipment:** Battery. Two Wheel Truck Assembly with P225/75R15 Tires. Over-the-Road Highway Trailer (Meets D.O.T. and Transport Canada Requirements). G-R Hard Iron Impeller, and Wear Plate.



Do not use in explosive atmosphere or for pumping volatile flammable liquids.

**ENGINE SPECIFICATIONS**

**Model:** Deutz F3L 1011F.  
**Type:** Three Cylinder, Four Cycle, Air Cooled Diesel Engine.  
**Displacement:** 125.0 Cu. In. (2,05 liter).  
**Governor:** Mechanical.  
**Lubrication:** Full Pressure.  
**Air Cleaner:** Dry Type.  
**Oil Reservoir:** 6.3 U.S. Qts. (6 liter) Dry.  
 5.8 U.S. Qts. (5.5 liter) Refill.  
**Fuel Tank:** 65 U.S. Gals. (246 liter).  
**Full Load Operating Time:** 42.8 Hrs.  
**Starter:** 12V Electric.

**Standard Features:** Instrument Panel Includes: Oil Pressure Warning Light, Alternator Failure Light, and Temperature Warning Light. Muffler w/Guard and Weather Cap.

**DEUTZ PUBLISHED PERFORMANCE:**  
 Maximum Continuous BHP 35 (26 kW) @ 2300 RPM



THE GORMAN-RUPP COMPANY • MANSFIELD, OHIO

GORMAN-RUPP OF CANADA LIMITED • ST. THOMAS, ONTARIO, CANADA

Specifications Subject to Change Without Notice

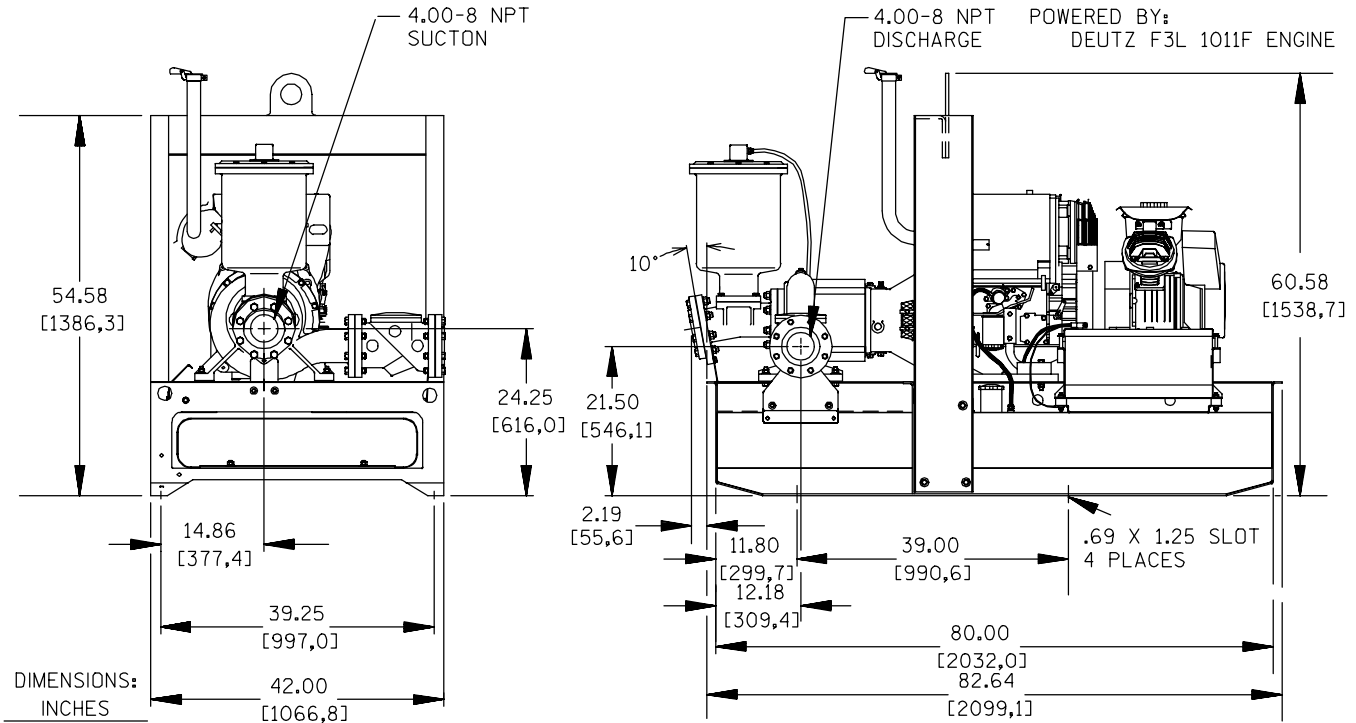
Printed in U.S.A.

**Specification Data**

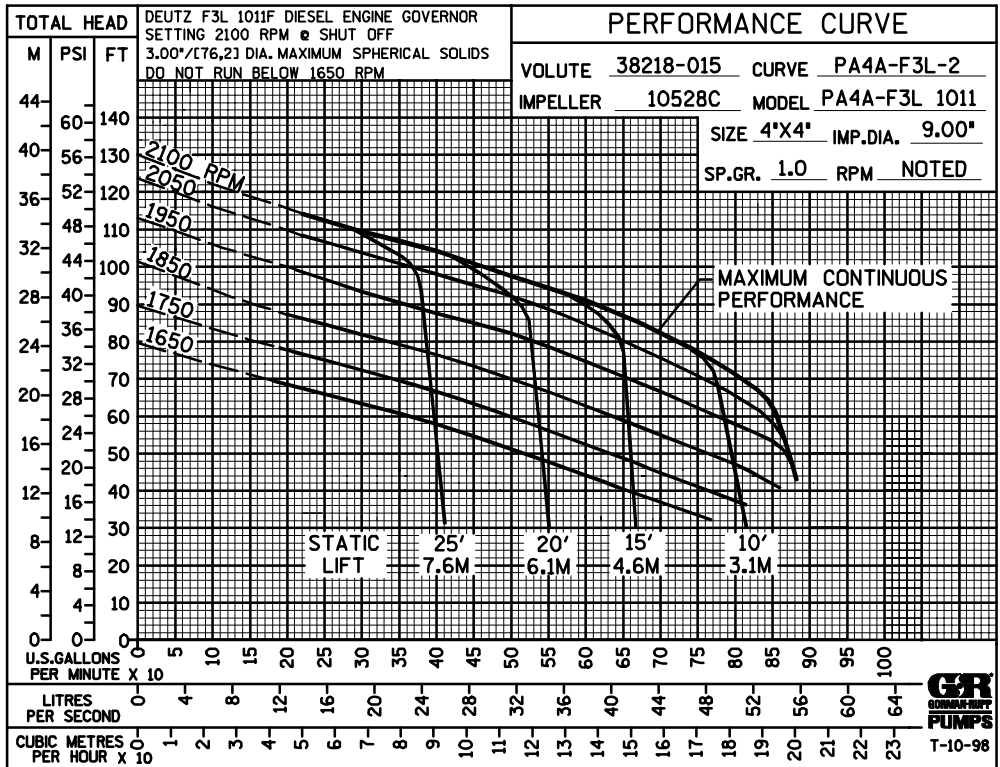
APPROXIMATE DIMENSIONS and WEIGHTS

	<u>SKID BASE</u>	<u>2-WHEEL</u>
NET WEIGHT:	2360 LBS. (1071 KG.)	2610 LBS. (1184 KG.)
SHIPPING WEIGHT:	2460 LBS. (1116 KG.)	2610 LBS. (1184 KG.)
EXPORT CRATE SIZE:	125 CU. FT. (3,5 CU. M.)	386 CU. FT. (10,9 CU. M.)

SECTION 42, PAGE 300



PA4A60-F3L 1011 SHOWN



THE GORMAN-RUPP COMPANY • MANSFIELD, OHIO

GORMAN-RUPP OF CANADA LIMITED • ST. THOMAS, ONTARIO, CANADA

Specifications Subject to Change Without Notice

Printed in U.S.A.