



VARIOUS PATENTS APPLY

Priming Assisted Centrifugal Pump w/Autostart Model PA4A60C-C2.2T FT4 Size 4" x 4"



Total Head		Capacity of Pump in U.S. Gallons per Minute (GPM) at Continuous Performance			
P.S.I.	Feet				
58.5	135	220	220	220	220
52.0	120	375	490	490	490
43.4	100	390	548	672	780
34.7	80	405	558	683	812
26.0	60	415	568	695	832
17.3	40	425	578	708	853
Suction Lift		25'	20'	15'	10'

PHOTO NOT AVAILABLE AT TIME OF PUBLISHING

PUMP SPECIFICATIONS**Size:** 4" x 4" (102 mm x 102 mm) Flanged.**Casing:** Gray Iron 30.

Maximum Operating Pressure 98 psi (676 kPa).*

Semi-Open Type, Two Vane Impeller: Ductile Iron 65-45-12.

Handles 3" (76,2 mm) Diameter Spherical Solids.

Impeller Shaft: Stainless Steel 17-4 PH.**Replaceable Wear Plate:** Carbon Steel 1015.**Bearing Housing:** Gray Iron 30.**Seal Plate:** Gray Iron 30.**Seal:** Cartridge Type, Mechanical, Oil-Lubricated, Double Floating, Self-Aligning. Silicon Carbide Rotating and Stationary Faces. Stainless Steel 316 Stationary Seat. Fluorocarbon Elastomers (DuPont Viton® or Equivalent). Stainless Steel 18-8 Cage and Spring. Maximum Temperature of Liquid Pumped 160°F (71°C).***Shaft Sleeve:** Alloy Steel 4130.**Priming Chamber:** Gray Iron 30 Housing w/Stainless Steel Float and Linkage.**Discharge Check Valve:** Ductile Iron Housing with Welded Nickel Seat and Buna-N Flapper.**Radial Bearing:** Open Single Row Ball.**Thrust Bearing:** Open Double Row Ball.**Bearing and Seal Cavity Lubrication:** SAE 30 Non-Detergent Oil.**Gaskets:** Vegetable Fiber and Buna-N.**O-Rings:** Buna-N.**Hardware:** Standard Plated Steel.**Bearing and Seal Cavity Oil Level Sight Gauges.****Consult Factory for Applications Exceeding Maximum Pressure and/or Temperature Indicated.***Standard Equipment:** Belt-Driven Air Compressor. Hoisting Bail. Combination Skid Base w/Fuel Tank. [Full Feature Control Panel](#) [Single Ball Type Float Switch](#).****Optional Equipment:** Battery, NPT Suction and Discharge Flange Kits, High Speed (55 MPH/89 KM/H) Single Axle Pneumatic-Tired Wheel Kit w/ DOT-Approved Lights and Electric Brakes. [Tandem Axle Over-the-Road Trailer](#) Liquid Level Transducer, Skid Base Kit.***50 Ft. (15 m) Standard Length; Dual Switches and Alternate Cable Lengths Available From the Factory.***ENGINE SPECIFICATIONS****Model:** Caterpillar C2.2T.**EPA Tier** Final Tier 4.**Type:** Four Cylinder Turbocharged, Diesel Engine.**Displacement** 134 Cu. In. (2,2 Liters).**Governor:** Electronic.**Lubrication:** Forced Circulation.**Air Cleaner:** Dry Type.**Fuel Tank:** 70 U.S. Gals. (265 liters).**Full Load Operating Time:** 24 Hrs.**Starter:** 12V Electric.**Standard Features:** Muffler w/Guard and Weather Cap, DOC Exhaust After-Treatment System.**Engine Control Features:** Padlockable Box with Throttle Control, Tachometer, Coolant Temperature, Oil Pressure, Voltage and Overstart Indicators/Shutdowns. Manual/Stop/Auto Keyswitch. Audible Startup Warning Delay. Fuel Level Display/Alarm/Shutdown.**CATERPILLAR PUBLISHED PERFORMANCE:**Maximum Gross BHP (Intermittent)
49 (36,4 kW) @ 2800 RPM

GORMAN-RUPP PUMPS

www.grpumps.com

Specifications Subject to Change Without Notice

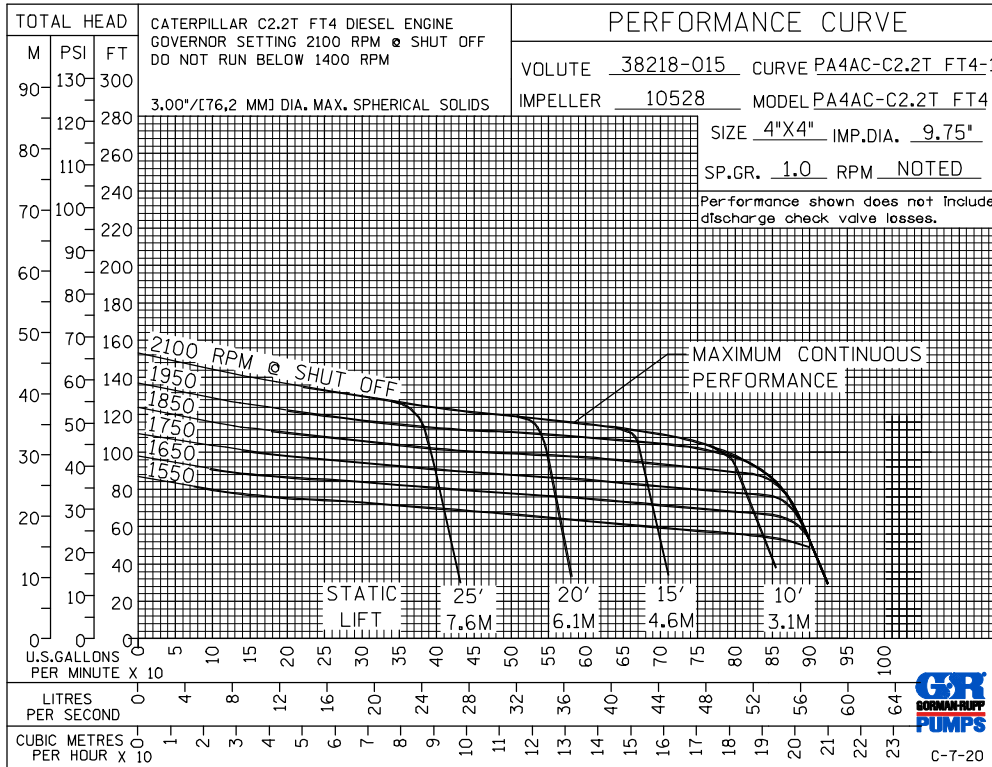
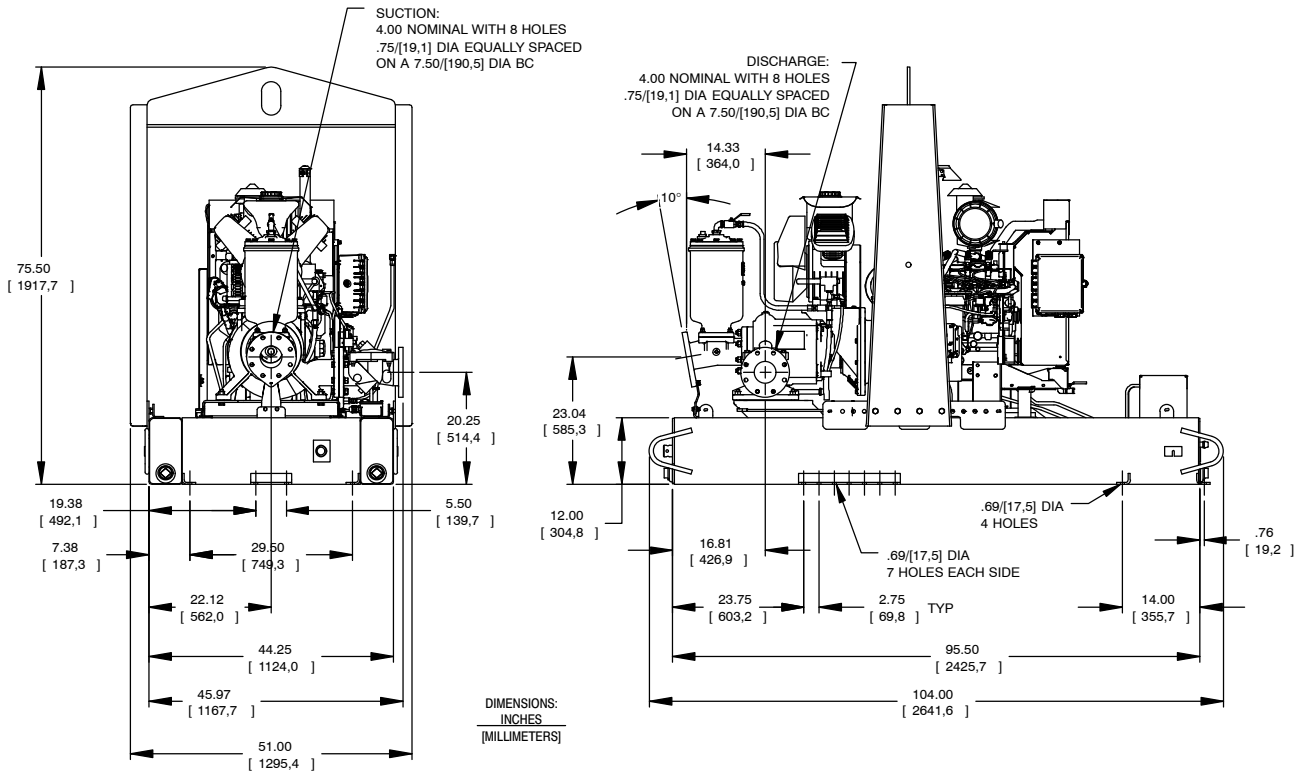
Printed in U.S.A.

Specification Data

SECTION 42, PAGE 227

APPROXIMATE
DIMENSIONS and WEIGHTS

NET WEIGHT: 3190 LBS. (1707,8 KG.)
SHIPPING WEIGHT: 3315 LBS. (1445,0 KG.)
EXPORT CRATE SIZE: 273 CU. FT. (7,7 CU. M.)



GORMAN-RUPP PUMPS

www.grpumps.com

Specifications Subject to Change Without Notice

Printed in U.S.A.