



Diesel Engine Driven Priming Assisted Centrifugal Pump w/Autostart Model PAV3B60C-3TNV80F FT4 Size 3" x 3"



VARIOUS PATENTS APPLY

Total Head		Capacity of Pump in U.S. Gallons per Minute (GPM) at Continuous Performance			
P.S.I.	Feet				
51.6	119	52	52	52	52
47.7	110	100	136	136	136
43.4	100	108	180	215	217
39.0	90	116	189	235	261
34.7	80	124	197	245	286
30.3	70	132	205	257	300
26.0	60	140	214	268	312
21.7	50	147	222	279	325
17.3	40	155	230	290	337
13.0	30	163	238	301	350
8.7	20	170	246	312	363
Suction Lift		25'	20'	15'	10'



PUMP SPECIFICATIONS

- Size:** 3" x 3" (76,2 mm x 76,2 mm) Flanged.
- Casing:** Gray Iron 30.
Maximum Operating Pressure 77 psi (531 kPa).*
- Four Vane Vortex Impeller:** Ductile Iron 65-45-12.
Handles 3" (76,2 mm) Diameter Spherical Solids.
- Impeller Shaft:** Alloy Steel 4150.
- Bearing Housing:** Gray Iron 30.
- Seal:** Cartridge Type, Mechanical, Oil-Lubricated, Double Floating, Self-Aligning. Silicon Carbide Rotating and Stationary Faces. Stainless Steel 316 Stationary Seat. Fluorocarbon Elastomers (DuPont Viton® or Equivalent). Stainless Steel 18-8 Cage and Spring. Maximum Temperature of Liquid Pumped, 160°F (71°C).*
- Shaft Sleeve:** Alloy Steel 4130.
- Priming Chamber:** Gray Iron 30 Housing w/Stainless Steel Float and Linkage.
- Flap Valve:** Neoprene w/Nylon and Steel Reinforcing.
- Removable Cleanout Cover Plate:** Gray Iron 30.
- Thrust and Radial Bearings:** Open Single Row Ball.
- Bearing Lubrication:** SAE #30 Non-Detergent Oil.
- Flanges:** Gray Iron 30.
- Gaskets:** Vegetable and Compressed Synthetic Fibers.
- O-Rings:** Fluorocarbon (DuPont Viton® or Equivalent) and Buna-N.
- Hardware:** Standard Plated Steel.
- Bearing and Seal Oil Sight Gauge.**

**Consult Factory for Applications Exceeding Maximum Pressure and/or Temperature Indicated.*

Standard Equipment: Belt-Driven Air Compressor. Hoisting Bail. Combination Skid Base w/Fuel Tank. Strainer. Single Ball Type Float Switch.**

Optional Equipment: Battery. High Speed (55 MPH/89 KM/H) Wheel Kit with 5.3 x 12" Pneumatic Tires. 3" NPT Flange Kit. Metric Flanges

***50 Ft. (15 m) Standard Length; Dual Switches and Alternate Cable Lengths Available From the Factory.*

WARNING!

Do not use in explosive atmosphere or for pumping volatile flammable liquids.

ENGINE SPECIFICATIONS

- Model:** Yanmar 3TNV80F-SDSA.
- EPA Tier:** Final Tier 4.
- Type:** Three Cylinder, Four Cycle, Liquid Cooled Diesel Engine.
- Displacement:** 77.3 Cu. In. (1.267 Liters).
- Governor:** Electronic Isochronous.
- Lubrication:** Forced Circulation.
- Air Cleaner:** Dry Type.
- Fuel Tank:** 28 U.S. Gallons (106 Liters).
- Full Load Operating Time:** 21 Hrs.
- Starter:** 12V Electric.
- Standard Features:** Muffler w/Weather Cap.
- Engine Control Features:** Low Oil Pressure and High Coolant Temperature Safety Shut Down Switches. Autostart Instrument Panel Includes: Tachometer, Voltmeter, Hourmeter, Coolant Temperature Gauge, Oil Pressure Gauge, Manual/Stop/Auto Key Switch, 10 Amp Pushbutton Circuit Breaker, Startup Warning Delay, Throttle Control.
- YANMAR PUBLISHED PERFORMANCE:**
Maximum Net Intermittent B.H.P.
21.9 (16.4 kW) @ 3000 RPM



GORMAN-RUPP PUMPS

www.grpumps.com

Specifications Subject to Change Without Notice

Printed in U.S.A.

Specification Data

SECTION 42, PAGE 145

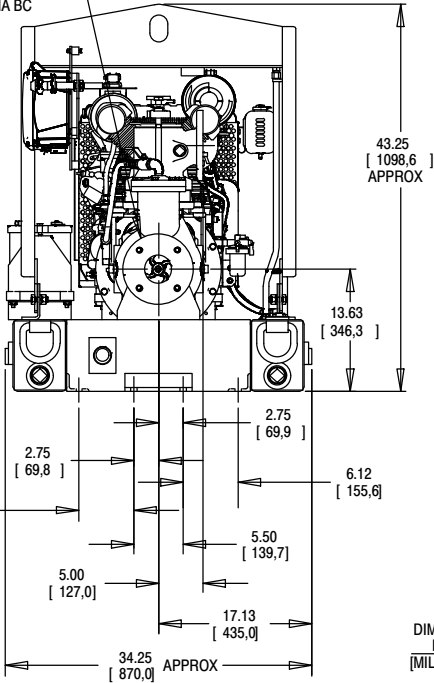
APPROXIMATE
DIMENSIONS and WEIGHTS

NET WEIGHT:
SHIPPING WEIGHT:
EXPORT CRATE SIZE:

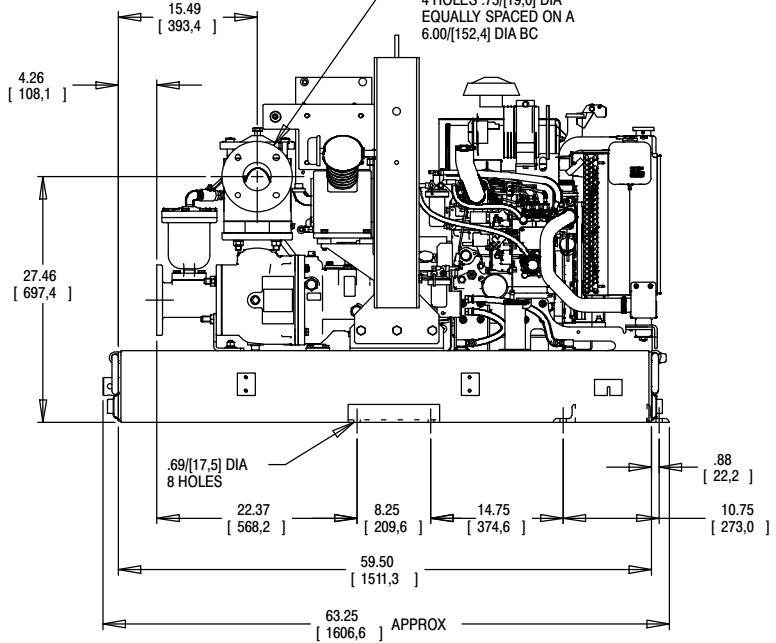
SKID BASE

1210 LBS. (548,8 KGS.)
1210 LBS. (548,8 KGS.)
73.7 CU. FT. (2,1 CU. M.)

SUCTION:
3.00 NOMINAL WITH
4 HOLES .75/[19,0] DIA
EQUALLY SPACED ON A
6.00/[152,4] DIA BC

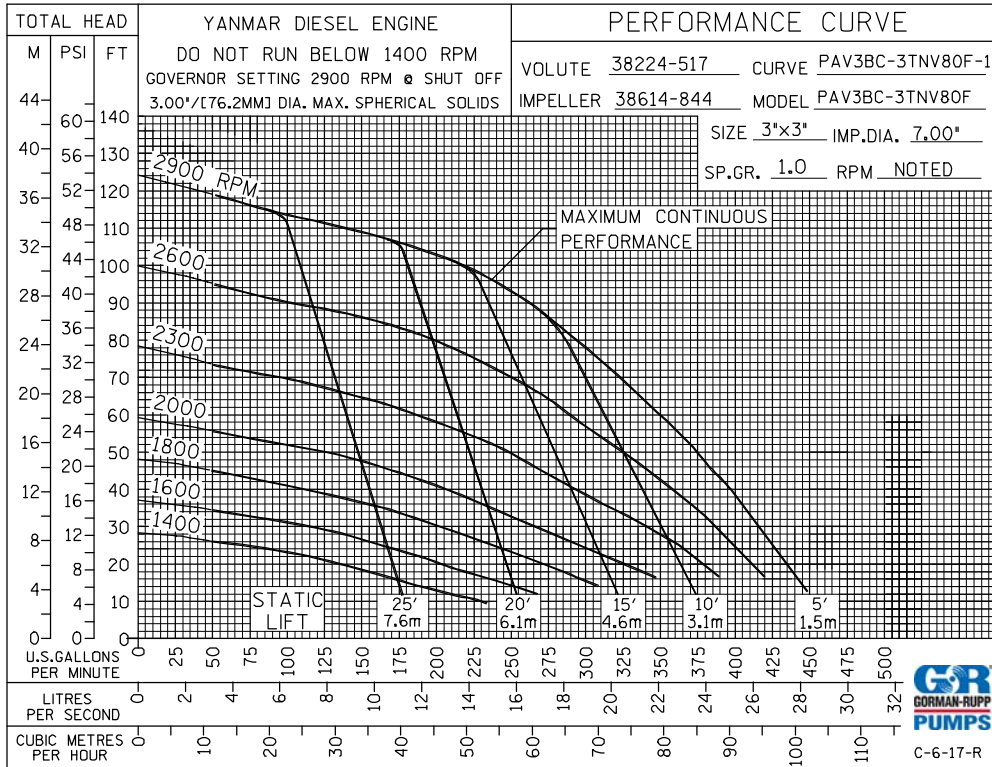


DISCHARGE:
3.00 NOMINAL WITH
4 HOLES .75/[19,0] DIA
EQUALLY SPACED ON A
6.00/[152,4] DIA BC



DIMENSIONS:
INCHES
[MILLIMETERS]

POWERED BY A YANMAR 3TNV80F-SDSA DIESEL ENGINE



GORMAN-RUPP PUMPS

www.grpumps.com

Specifications Subject to Change Without Notice

Printed in U.S.A.