



## Priming Assisted Centrifugal Pump

Models PAV3C60C-B-E10 460/3  
and PAV3C60C-B-E10 575/3  
Size 3" x 3"



Total Head		Capacity of Pump in U.S. Gallons per Minute (GPM) at Continuous Performance			
P.S.I.	Feet				
25.1	58	52	52	52	52
23.8	55	100	100	100	100
21.7	50	150	165	165	165
19.5	45	164	205	210	210
17.3	40	172	230	250	253
15.2	35	181	240	270	290
13.0	30	189	248	283	317
10.8	25	197	257	296	334
8.7	20	205	265	309	350
<b>Suction Lift</b>		<b>25'</b>	<b>20'</b>	<b>15'</b>	<b>10'</b>

### PUMP SPECIFICATIONS

**Size:** 3" x 3" (76 mm x 76 mm) Flanged.

**Casing:** Gray Iron 30.

Maximum Operating Pressure 38 psi (262 kPa).\*

**Four Vane Vortex Impeller:** Ductile Iron 65-45-12. Handles 3" (76,2 mm) Diameter Spherical Solids.

**Suction Spool:** Gray Iron 30.

**Discharge Flap Valve:** Neoprene<sup>w</sup>/Nylon and Steel Reinforcing.

**Impeller Shaft:** Alloy Steel 4150M.

**Bearing Housing:** Gray Iron 30.

**Seal:** Cartridge Type, Mechanical, Oil-Lubricated, Double Floating, Self-Aligning. Silicon Carbide Rotating and Stationary Faces. Stainless Steel 316 Stationary Seat. Fluorocarbon Elastomers (DuPont Viton<sup>®</sup> or Equivalent). Stainless Steel 18-8 Cage and Spring. Maximum Temperature of Liquid Pumped, 160°F (71°C).\*

**Seal Plate:** Ductile Iron 65-45-12.

**Shaft Sleeve:** Alloy Steel 4130.

**Priming Chamber:** Gray Iron 30 Housing<sup>w</sup>/Stainless Steel Float and Linkage.

**Discharge Elbow:** Gray Iron 30.

**Thrust and Radial Bearings:** Open Single Ball.

**Bearing and Seal Cavity Lubrication:** SAE 30 Non-Detergent Oil.

**Gaskets:** Vegetable Fiber, Rubber.

**O-Rings:** Buna-N and Fluorocarbon (DuPont Viton<sup>®</sup> or Equivalent).

**Hardware:** Standard Plated Steel.

**Bearing and Seal Cavity Oil Level Sight Gauges.**

*\*Consult Factory for Applications Exceeding Maximum Pressure and/or Temperature Indicated.*

**Standard Equipment:** Belt-Driven Air Compressor. Hoisting Bail. Skid Base. Strainer.

**Optional Equipment:** 3" NPT Flange Kit. Single Ball Type Float Switch.\*\*

*\*\*50 Ft. (15 m) Standard Length; Dual Switches and Alternate Cable Lengths Available From the Factory.*



### MOTOR SPECIFICATIONS†

**Type:** EISA Premium Efficiency Totally Enclosed Fan Cooled.

**Frame Size:** 215T.

**Power:** 10 H.P. (7,5 kW).

**Voltage/Phase:** 460/3 or 575/3.

**Hz:** 60.

**S.F.:** 1.15 (460/3) or 1.25 (575/3).

**Speed:** 1800 RPM Nominal.

**Full Load Amps:** (460/3) 12.6; (575/3) 10.1.

**Locked Rotor kVA Code:** H.

**Bearings:** Ball Type.

### CONTROL SPECIFICATIONS

NEMA Type 3R Intrinsically Safe Rain and Sleet (Ice) Resistant Enclosure. Carbon Steel with Powder Coat. Hand Off/Auto Switch Control with Across-The-Line Starter. 3 Pole Instantaneous Trip 300 Amp Circuit Breaker Type HMCP.

*† Standard Specifications Shown. Alternate Motors Available - Consult Factory.*



## GORMAN-RUPP PUMPS

www.grpumps.com

Specifications Subject to Change Without Notice

Printed in U.S.A.

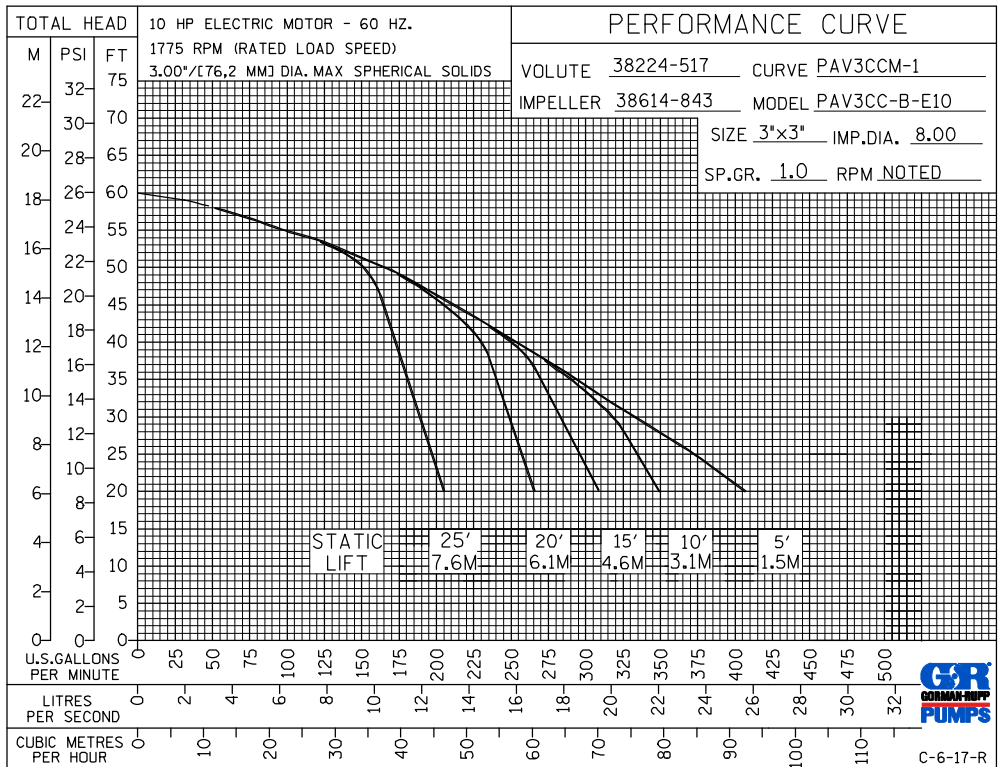
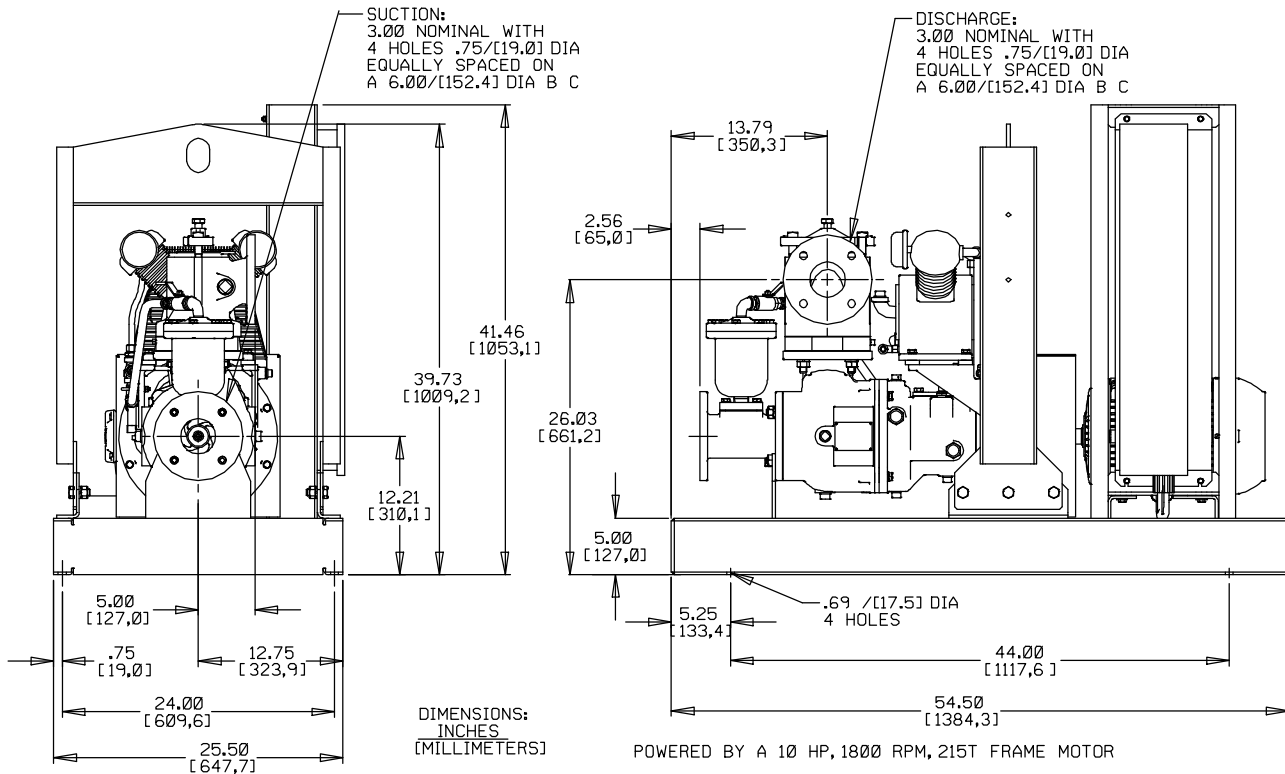
**Specification Data**

SECTION 42, PAGE 130

APPROXIMATE  
DIMENSIONS and WEIGHTS

**NET WEIGHT:**  
**SHIPPING WEIGHT:**  
**EXPORT CRATE SIZE:**

**CONSULT FACTORY**  
**CONSULT FACTORY**  
**52.4 CU. FT. (1,5 CU. M.)**



**GORMAN-RUPP PUMPS**

www.grpumps.com

Specifications Subject to Change Without Notice

Printed in U.S.A.