

ACDEU **Priming Assisted Centrifugal Pump**



Diesel Engine Driven

Models PA4A60-3029D and PA4A60-3029D-A

Size 4" x 4"

Total Head		Capacity of Pump in U.S. Gallons per Minute (GPM) at Continuous Performance			
P.S.I.	Feet				
52.4	121	200	200	200	200
52.0	120	210	210	210	210
47.7	110	375	430	430	430
43.3	100	390	540	620	620
39.0	90	399	550	660	765
34.7	80	400	555	665	790
30.3	70	410	563	670	800
26.0	60	412	570	675	810
21.7	50	420	575	680	825
17.3	40	422	580	690	835
13.0	30	430	590	695	845
Suction Lift		25'	20'	15'	10'



PA4A60-3029D SHOWN



PUMP SPECIFICATIONS

Size: 4" x 4" NPT (102 mm x 102 mm) - Female.
Casing: Gray Iron No. 30. Maximum Operating Pressure 90 psi (6,3 kg/cm²).*
Open Type, Two Vane Impeller: Ductile Iron No. 65-45-12. Handles 3" (76 mm) Diameter Spherical Solids.
Impeller Shaft: Alloy Steel No. 4140.
Replaceable Wear Plate: Steel No. 1018.
Intermediate Bracket: Gray Iron No. 30.
Seal Plate: Gray Iron No. 30.
Seal: Mechanical, Oil-Lubricated, Double Floating, Self-Aligning. Silicon Carbide Rotating and Stationary Faces. Stainless Steel No. 316 Stationary Seat. Fluorocarbon Elastomers (DuPont Viton® or Equivalent). Stainless Steel No. 18-8 Cage and Spring. Maximum Temperature of Liquid Pumped 160°F (71°C).*

* Consult Factory for Applications Exceeding Maximum Pressure and/or Temperature Indicated.

Shaft Sleeve: Alloy Steel No. 4130
Priming Chamber: Gray Iron No. 30.
Discharge Check Valve: Gray Iron No. 30 Housing. Buna-N Flapper.
Radial Bearing: Open Single Ball.
Thrust Bearing: Open Double Ball.
Bearing Lubrication: Oil
Flanges: Gray Iron No. 30.
Gaskets: Vegetable Fiber, PTFE, Resistant Synthetic Rubber, and Cork.
O-Rings: Buna-N.
Hardware: Standard Plated Steel.
Bearing and Seal Cavity Oil Level Sight Gauges.

PA4A60-3029D-A ONLY: Liquid Level Controls: Submersible Transducer* and Electronic Pressure Switch (EPS) Control with Start/Stop Set Point Adjustments for Automatic Filling/Emptying.

* 50 Ft. (15 m) Standard Length; 150 Ft. (46 m) Maximum; Specify Length at Time of Order.

Standard Equipment: Belt Driven Air Compressor. Hoisting Bail. Skid Base. Strainer.

Optional Equipment: Battery. Two Wheel Truck Assembly with P225/75R15 Tires. Over-the-Road Highway Trailer (Meets D.O.T. and Transport Canada Requirements). G-R Hard Iron Impeller, Seal Plate, and Wear Plate.

ENGINE SPECIFICATIONS

Model: John Deere 3029DF120 "Power Tech".
Type: Three Cylinder, Four Cycle, Liquid Cooled Diesel Engine.
Displacement: 179 Cu. In. (2,9 liter).
Governor: Mechanical.
Lubrication: Forced Circulation.
Air Cleaner: Dry Type.
Oil Reservoir: 6.3 U.S. Qts. (6 liter) Dry. 5.3 U.S. Qts. (5 liter) Refill.
Fuel Tank Capacity: 65 U.S. Gals. (246 liter).
Full Load Operating Time: 38.4 Hrs.
Starter: 12V Electric.
Standard Features: Low Oil Pressure and High Water Temperature Safety Shut Down Switches. Instrument Panel with: Temperature Gauge, Oil Pressure Gauge, Ammeter, Hourmeter, Tachometer, and Alternator Failure Light. Muffler w/Guard and Weather Cap.

JOHN DEERE PUBLISHED PERFORMANCE: Maximum Continuous BHP 52 (39 kW) @ 2500 RPM



THE GORMAN-RUPP COMPANY • MANSFIELD, OHIO

GORMAN-RUPP OF CANADA LIMITED • ST. THOMAS, ONTARIO, CANADA

Specifications Subject to Change Without Notice

Printed in U.S.A.

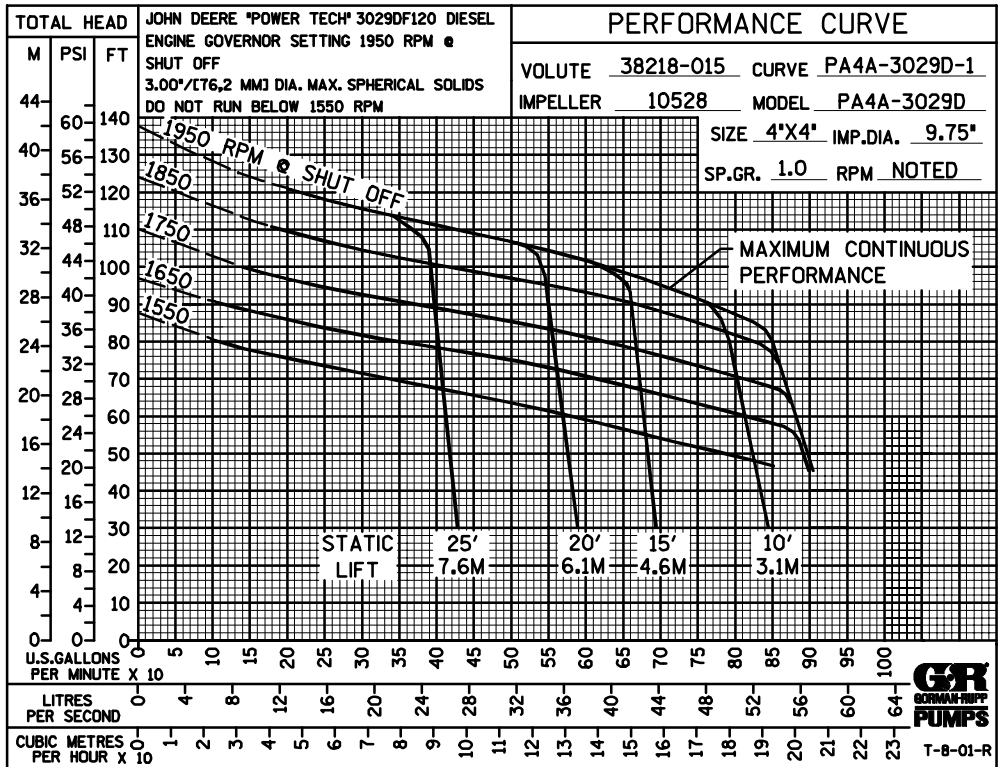
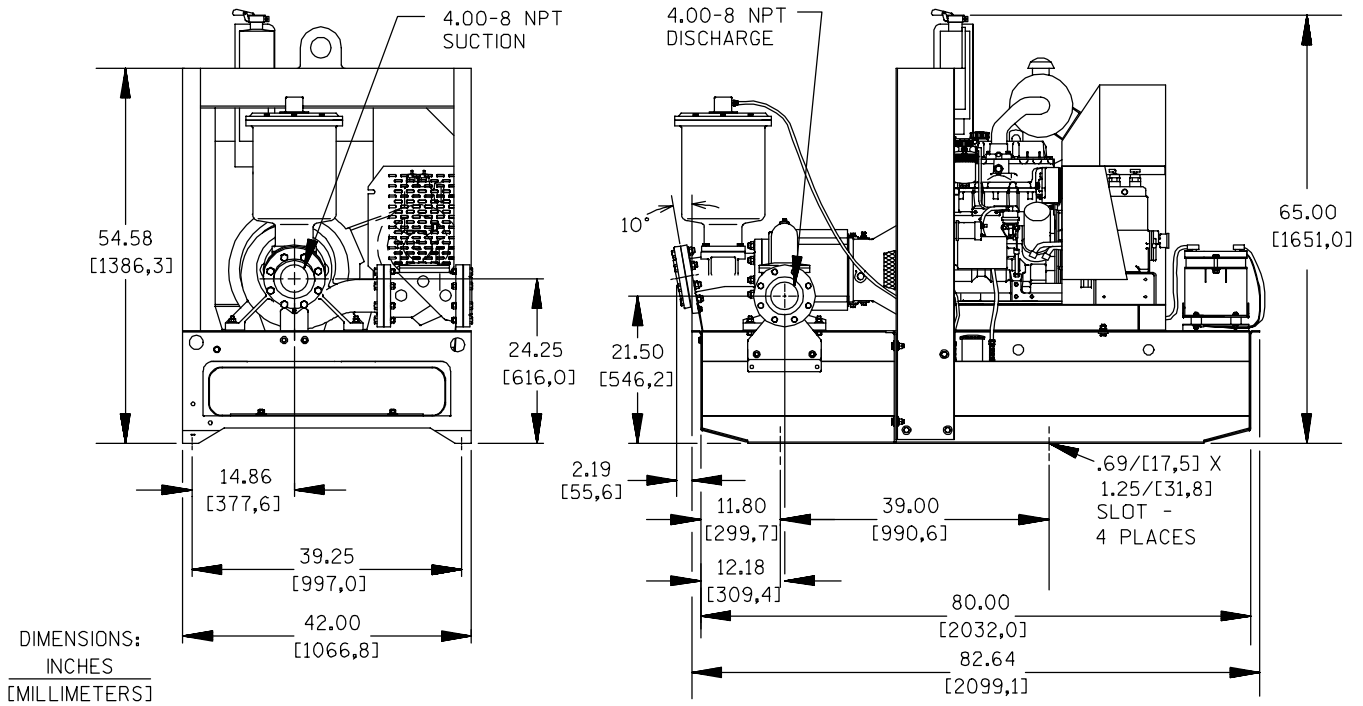
Specification Data

APPROXIMATE DIMENSIONS and WEIGHTS

	SKID BASE	2-WHEEL
NET WEIGHT:	2600 LBS. (1179 KG.)	2850 LBS. (1293 KG.)
SHIPPING WEIGHT:	2700 LBS. (1225 KG.)	2850 LBS. (1293 KG.)
EXPORT CRATE SIZE:	119 CU. FT. (3,4 CU. M.)	370 CU. FT. (10,5 CU. M.)

SECTION 42, PAGE 100

POWERED BY: JOHN DEERE 3029DF DIESEL ENGINE



THE GORMAN-RUPP COMPANY • MANSFIELD, OHIO

GORMAN-RUPP OF CANADA LIMITED • ST. THOMAS, ONTARIO, CANADA

Specifications Subject to Change Without Notice

Printed in U.S.A.