



**Diesel Engine Driven**  
**Self Priming Centrifugal Pump**  
**Model 112D60-B-TCD914L6**  
**Size 12" x 12"**



### PUMP SPECIFICATIONS

**Size:** 12" x 12" (305 mm x 305 mm) NPT.

**Casing:** Gray Iron 30.

Maximum Operating Pressure 94 psi (648 kPa).\*

**Semi-Open Type, Two Vane Impeller:** Ductile Iron 80-60-03.  
Handles 3" (76,2 mm) Diameter Spherical Solids.

**Impeller Shaft:** Alloy Steel 4150.

**Replaceable Wear Plate:** Ductile Iron 80-60-03.

**Removable Clean-Out Cover Plate:** Gray Iron 30;  
16 lbs. (7,3 kg).

**Suction Elbow:** Gray Iron 30.

**Pedestal:** Gray Iron 30.

**Seal Plate:** Gray Iron 30.

**Seal:** Mechanical, Oil-Lubricated, Double-Floating Self-Aligning. Tungsten Titanium Carbide Rotating And Stationary Faces. Stainless Steel 316 Stationary Seat. Fluorocarbon Elastomers (DuPont Viton® or Equivalent). Stainless Steel 18-8. Cage and Spring. Maximum Temperature of Liquid Pumped 160°F (71°C).\*

**Shaft Sleeve:** Stainless Steel 304.

**Flap Valve:** Buna-N w/Steel Reinforcement.

**Radial Bearing:** Open Single Row Ball.

**Thrust Bearing:** Open Double Row Ball.

**Bearing and Seal Cavity Lubrication:** SAE 30 Non-Detergent Oil.

**Gaskets:** Vegetable Fiber and Cork w/Buna-N Binder.

**O-Rings:** Buna-N.

**Hardware:** Standard Plated Steel.

**Brass Pressure Relief Valve.**

**Bearing Cavity Oil Level Sight Gauge and Seal Bottle Oiler Strainer.**

**Standard Equipment:** Victaulic® Suction Clamp. 1.6:1 Gear Reducer.

*\*Consult Factory for Applications Exceeding Maximum Pressure and/or Temperature Indicated.*

Victaulic is a Registered Trademark of Victaulic Company of America.



### ENGINE SPECIFICATIONS

**Model:** Deutz TCD914L6.

**Type:** Turbo-Charged, Six Cylinder, Four Cycle, Charge Air-Cooled Diesel Engine.

**Displacement:** 397 Cu. In. (6,5 Liters).

**Governor:** Mechanical.

**Lubrication:** Forced Circulation.

**Air Cleaner:** Dry Type.

**Fuel Tank:** 125 U.S. Gallons (473 Liters).

**Full Load Operating Time:** 16.4 Hours.

**Starter:** 12 Volt Electric.

**Standard Features:** High Oil Temperature, Low Oil Pressure, V-belt, Alternator and Start Failure Safety Shut Down Switches/Indicators. Fuel Level Gauge. Throttle Control. Instrument Panel with: Temperature Gauge, Oil Pressure Gauge, Ammeter, Hourmeter, Tachometer, Start/Stop Key Switch, 15 Amp Fuse. Muffler w/Guard and Weather Cap.

### DEUTZ PUBLISHED PERFORMANCE:

Maximum Continuous B.H.P.

174 (139kW) @ 2300 RPM



THE GORMAN-RUPP COMPANY • MANSFIELD, OHIO

GORMAN-RUPP OF CANADA LIMITED • ST. THOMAS, ONTARIO, CANADA

www.grpumps.com

Specifications Subject to Change Without Notice

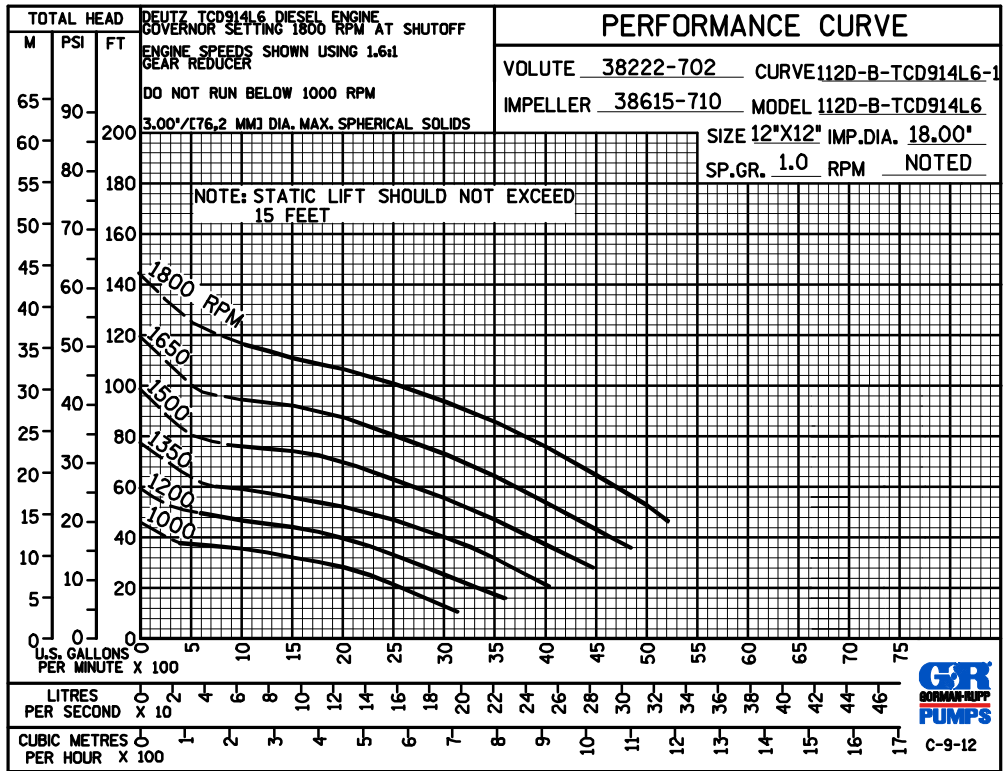
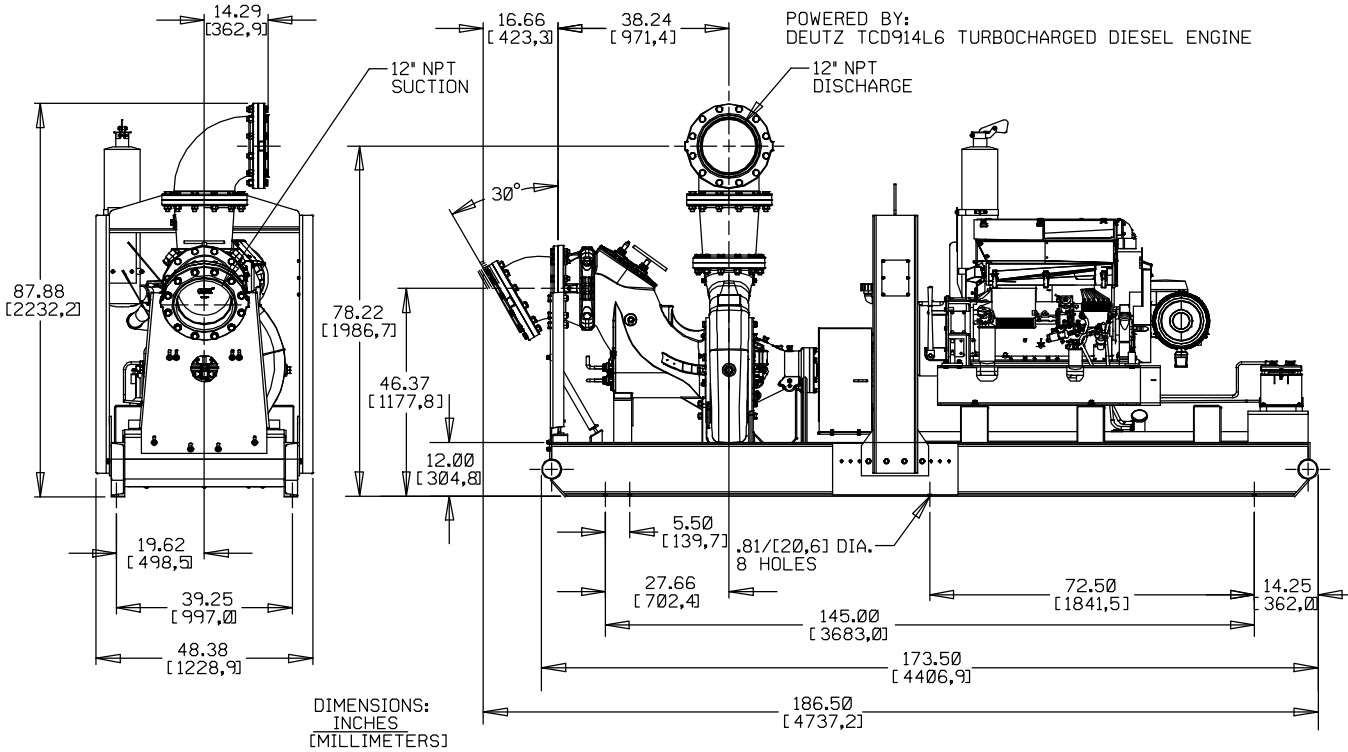
Printed in U.S.A.

**Specification Data**

APPROXIMATE DIMENSIONS and WEIGHTS

NET WEIGHT: 7600 LBS. [3447,3 KG.]  
 SHIPPING WEIGHTS: 8300 LBS. 3764,8 KG.]  
 EXPORT CRATE: 616 CU. FT. [17,4 CU. M.]

SECTION 40, PAGE 4505



THE GORMAN-RUPP COMPANY • MANSFIELD, OHIO

GORMAN-RUPP OF CANADA LIMITED • ST. THOMAS, ONTARIO, CANADA

Specifications Subject to Change Without Notice

Printed in U.S.A.