

ACEU



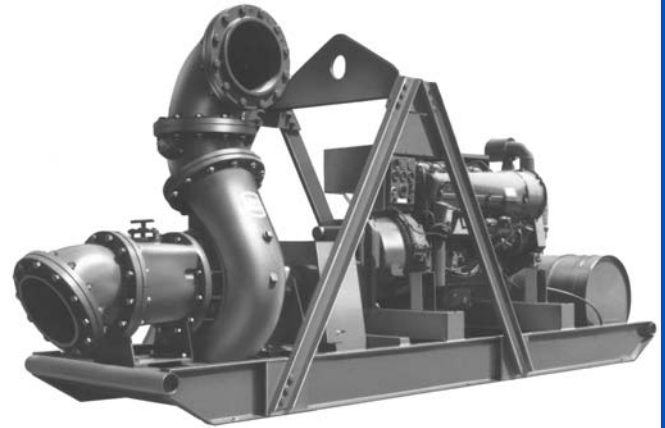
Diesel Engine Driven

# Self Priming Centrifugal Pump

## Model 112A20-B-BF6L

### Size 12" x 12"

Total Head		Capacity Of Pump In U.S. Gallons Per Minute (GPM) At Continuous Performance		
P.S.I.	Feet			
40.3	93	3250	3250	3250
39.0	90	3550	3550	3550
34.7	80	4500	4650	4650
30.3	70	5075	5350	5450
26.0	60	5375	5750	5875
21.7	50	5400	6025	6200
17.3	40	5400	6150	6400
13.0	30	5400	6250	6550
8.7	20	5400	6300	6650
<b>Suction Lift</b>		<b>15'</b>	<b>10'</b>	<b>5'</b>



#### PUMP SPECIFICATIONS

**Size:** 12" X 12" (305 mm X 305 mm) NPT - Female.

**Pump Casing:** Gray Iron No. 30.

Maximum Operating Pressure 70 psi (483 kPa).\*

**Enclosed, Four Vane Impeller:** Ductile Iron No. 80-60-03.

Handles 1 7/8" (47,6 mm) Diameter Spherical Solids.

**Impeller Shaft:** Stainless Steel 17-4 PH.

**Suction Plate:** Ductile Iron No. 80-60-03.

**Adjustable Wear Ring:** Ductile Iron No. 80-60-03.

**Impeller Wear Ring:** Ductile Iron No. 80-60-03.

**Removable Cover Plate:** Gray Iron No. 30. Wt. 3 lbs. (1.4 kg.)

**Pedestal:** Gray Iron No. 30.

**Seal Plate:** Gray Iron No. 30.

**Seal:** Mechanical, Oil-Lubricated, Double-Floating Self-Aligning. Tungsten Titanium Carbide Rotating And Stationary Faces. Stainless Steel No. 316 Stationary Seat. Fluorocarbon Elastomers (DuPont Viton® or Equivalent). Stainless Steel No. 18-8. Cage and Spring. Maximum Temperature of Liquid Pumped 160°F (71°C).\*

**Flap Valve:** Buna-N w/Steel Reinforcement.

**Check Valve Flange:** Gray Iron No. 30.

**Radial Bearing:** Open Single Row Ball.

**Thrust Bearing:** Open Double Row Bal.

**Bearing Lubrication:** SAE No. 30 Non-Detergent Oil.

**Flanges:** Gray Iron No. 30.

**Gaskets:** Vegetable Fiber and Cork w/Nitrile Binder NC710.

**O-Rings:** Buna-N and PTFE.

**Hardware:** Standard Plated Steel.

**Standard Equipment:** Hoisting Bail, Skid Base. 90° Discharge Elbow. Oil Level Sight Gauge. Strainer. Pressure Relief Valve. 45° Adaptor Flanges (2).

**Optional Equipment:** Battery.

4 Wheel Auto-Steer w/ST225/75D15 Pneumatic Tires.

*\*Consult Factory for Applications Exceeding Maximum Pressure and/or Temperature Indicated.*



#### ENGINE SPECIFICATIONS

**Model:** Deutz BF6L.

**Type:** Six Cylinder, Four Cycle, Air-Cooled Diesel Engine.

**Displacement:** 373.5 Cu. In. (6,1 Liters).

**Governor:** Mechanical.

**Lubrication:** Forced Circulation.

**Air Cleaner:** Oil Bath.

**Oil Reservoir:** 19.5 U.S. Qts (18,4 Liters) Dry.

16.9 U.S. Qts (16,0 Liters) Refill.

**Fuel Tank:** 55 U.S. Gallons (208,2 Liters).

**Full Load Operating Time:** 6.9 Hours.

**Starter:** 12 Volt Electric.

**Standard Features:** High Oil Temperature, Low Oil Pressure, V-belt, Alternator and Start Failure Safety Shut Down Switches/Indicators. Fuel Level Gauge. Throttle Control. Instrument Panel with: Temperature Gauge, Oil Pressure Gauge, Ammeter, Hourmeter, Tachometer, Start/Stop Key Switch, 15 Amp Fuse. Muffler w/Guard and Weather Cap. 1.76:1 Gear Reducer.

#### DEUTZ PUBLISHED PERFORMANCE:

Maximum Continuous B.H.P. 141 @ 2300 RPM



THE GORMAN-RUPP COMPANY • MANSFIELD, OHIO

GORMAN-RUPP OF CANADA LIMITED • ST. THOMAS, ONTARIO, CANADA

www.grpumps.com

Specifications Subject to Change Without Notice

Printed in U.S.A.

**Specification Data**

APPROXIMATE  
DIMENSIONS and  
WEIGHTS

**SKID BASE**

**4-WHEEL**

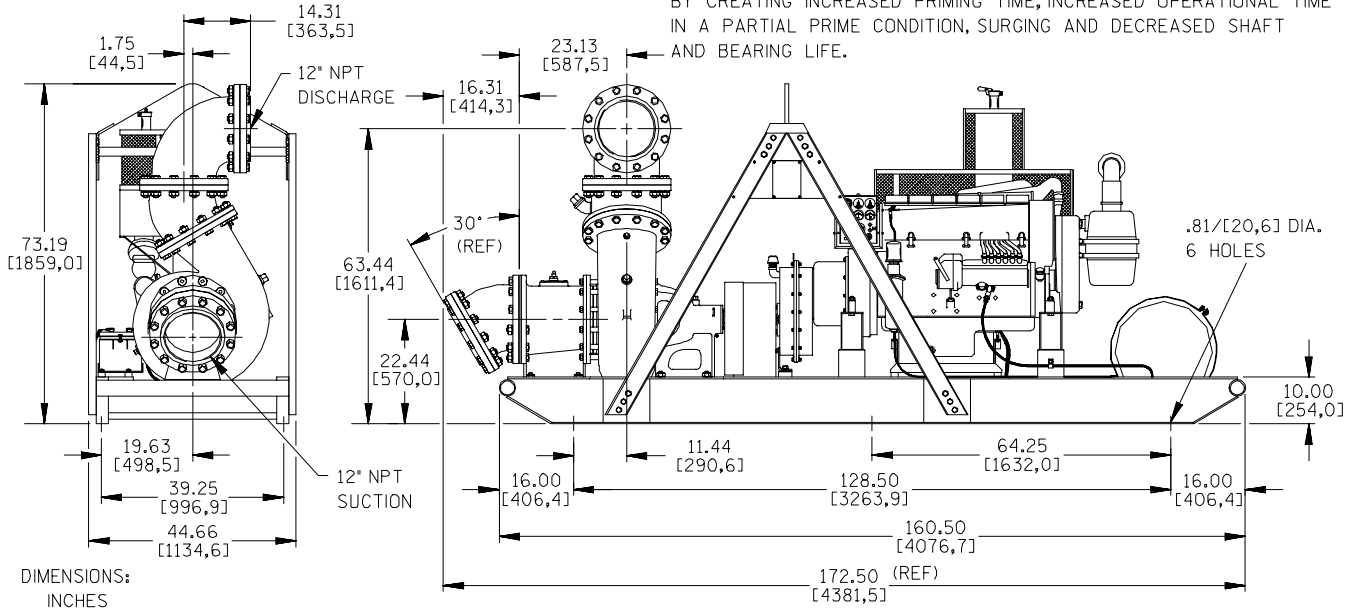
**NET WEIGHT:** 5148 LBS. [2335,1 KGS.] 5398 LBS. [2448,5 KGS.]  
**SHIPPING WEIGHTS:** 5250 LBS. [2381,4 KGS.] 5398 LBS. [2448,5 KGS.]  
**EXPORT CRATE:** 341.1 CU. FT. [9.7 CU. M.]

**SECTION 40, PAGE 4495**

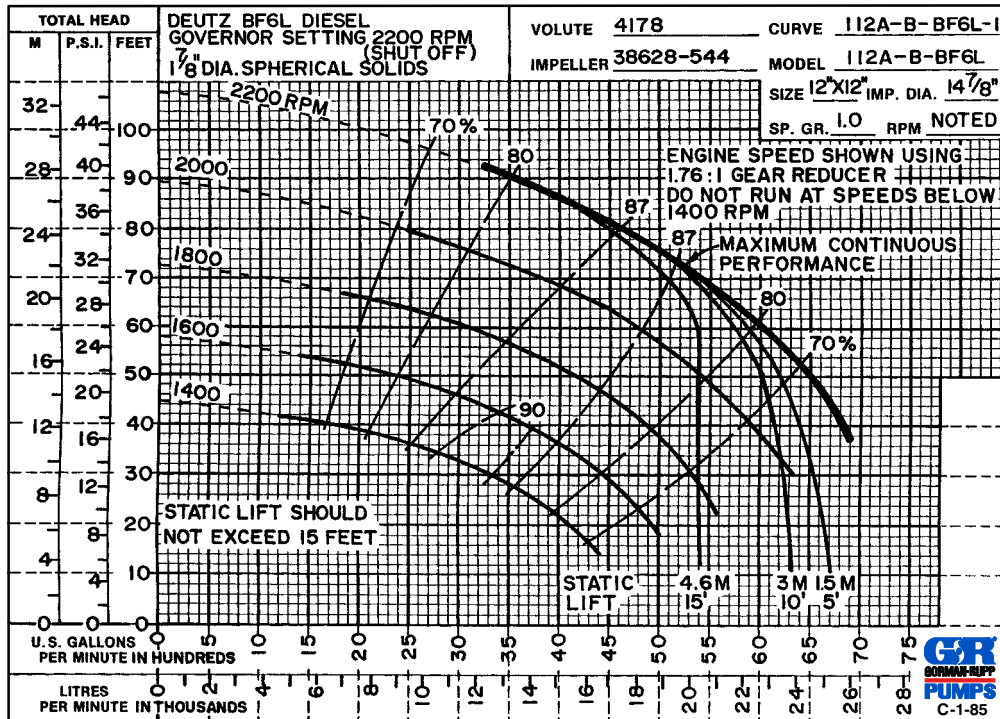
POWERED BY:  
DEUTZ BF6L TURBOCHARGED DIESEL ENGINE

-SUCTION LINE NOTE-

FOR SELF PRIMING APPLICATION, AVOID HORIZONTAL SUCTION LINES. IF USED, MAXIMUM ACCEPTABLE RUN IS 72.00/[1828,81]. PREFERRED INSTALLATION WOULD ANGLE SUCTION LINE DOWNWARD WITH 30° ELBOW AS SHOWN. LONG HORIZONTAL SUCTION LINES REDUCE EFFICIENCY BY CREATING INCREASED PRIMING TIME, INCREASED OPERATIONAL TIME IN A PARTIAL PRIME CONDITION, SURGING AND DECREASED SHAFT AND BEARING LIFE.



DIMENSIONS:  
INCHES  
[MILLIMETERS]



**THE GORMAN-RUPP COMPANY • MANSFIELD, OHIO**

GORMAN-RUPP OF CANADA LIMITED • ST. THOMAS, ONTARIO, CANADA

Specifications Subject to Change Without Notice

Printed in U.S.A.