



Self Priming Centrifugal Pump

Model 810A2-4045T

Size 10" x 10"



Total Head		Capacity of Pump in U.S. Gallons per Minute (GPM) at Continuous Performance			
P.S.I.	Feet				
52.0	120	560	560	560	560
43.4	100	1250	1270	1270	1270
34.7	80	1870	1920	1920	1920
26.0	60	2125	2370	2500	2500
17.3	40	2200	2550	2740	2900
8.7	20	2300	2650	2870	3100
Suction Lift		20'	15'	10'	5'



PUMP SPECIFICATIONS

Size: 10" x 10" (254 mm x 254 mm) NPT - Female.

Casing: Gray Iron 30.

Maximum Operating Pressure 91 psi (627 kPa).*

Semi-Open Type, Two Vane Impeller: Ductile Iron 65-45-12.
Handles 2 1/2" (63,5 mm) Diameter Spherical Solids.

Impeller Shaft: Alloy Steel 4150.

Replaceable Wear Plate: Gray Iron 30.

Intermediate Bracket: Gray Iron 30.

Seal Plate: Gray Iron 30.

Seal: Double, Grease-Lubricated w/Spring-Loaded Grease Cup. Sintered Bronze Stationary Seal Seats. Steel Rotating Faces. Neoprene Packing Rings. Maximum Temperature of Liquid Pumped 110°F (43°C). Maximum Suction Pressure 10 psi (69 kPa).*

Seal Liner: Copper Alloy C93700.

Flap Valve: Neoprene w/Fabric Reinforcing, Gray Iron 30 and Ductile Iron 65-45-12.

Radial Bearing: Open Double Row Ball.

Thrust Bearing: Open Single Row Ball.

Bearing Lubrication: SAE 30 Non-Detergent Oil.

Flanges: Gray Iron 30.

Gaskets: Vegetable Fiber.

O-Rings: Buna-N.

Hardware: Standard Plated Steel.

Standard Equipment: Oil Level Sight Gauge, Hoisting Bail, Skid Base, Strainer and 90° Discharge Elbow.

Optional Equipment: Battery. High Speed (55 MPH/89 KM/H) Single Axle Pneumatic-Tired Wheel Kit w/w_o DOT-Approved Lights and Electric Brakes. [Tandem Axle Over-the-Road Trailer](#). [Full Feature Control Panel](#).

*Consult Factory for Applications Exceeding Maximum Pressure and/or Temperature Indicated.



ENGINE SPECIFICATIONS

Model: John Deere 4045T.

EPA Tier: Interim Tier 4.

Type: Four Cylinder, Four Cycle, Turbocharged, Liquid Cooled Diesel Engine.

Displacement: 276 Cu. In. (4,5 Liters).

Lubrication: Forced Circulation.

Air Cleaner: Dry Type.

Fuel Tank: 88 U.S. Gals. (330 Liters).

Full Load Operating Time: 29.1 Hrs.

Starter: 12V Electric.

Standard Features: Muffler w/Weather Cap.

Optional: Electronic Fuel Level Sensor.

Engine Control Features: Padlockable Box with Throttle Control, Tachometer, Coolant Temperature, Oil Pressure, Voltage and Overstart Indicators/Shutdowns. Manual/Stop Key-switch. Fuel Level Display/Alarm/Shutdown (For Use With Optional Fuel Level Sensor).

JOHN DEERE PUBLISHED PERFORMANCE:
Maximum Gross Continuous BHP (Industrial)
72 (54 kW) @ 2400 RPM



GORMAN-RUPP PUMPS

www.grpumps.com

Specifications Subject to Change Without Notice

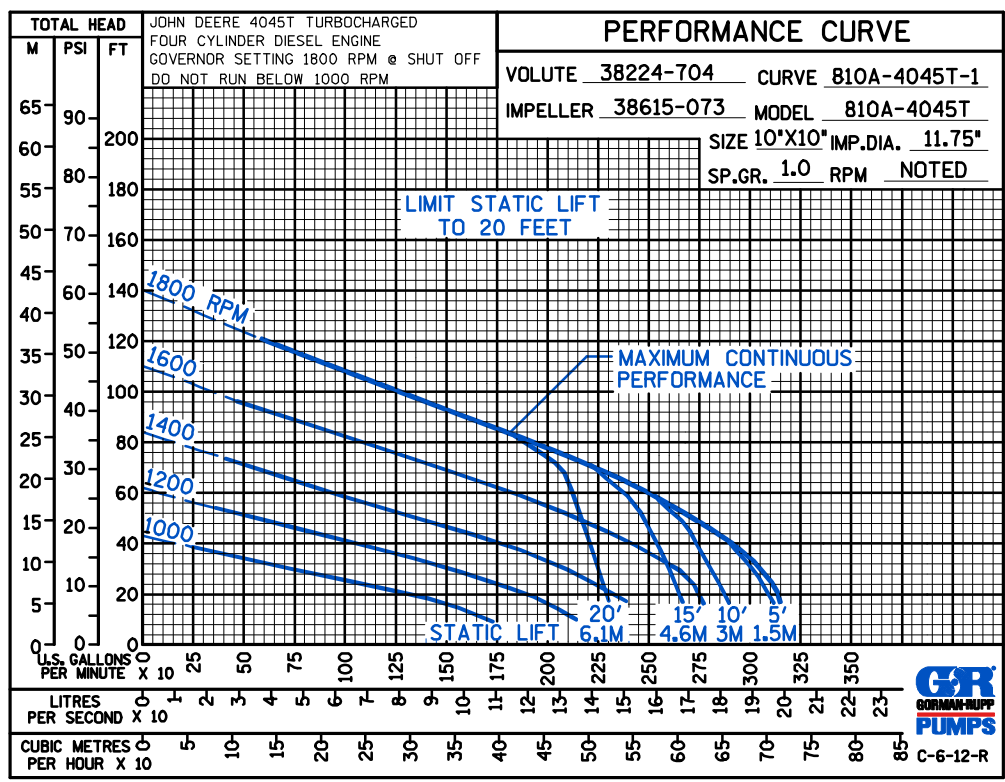
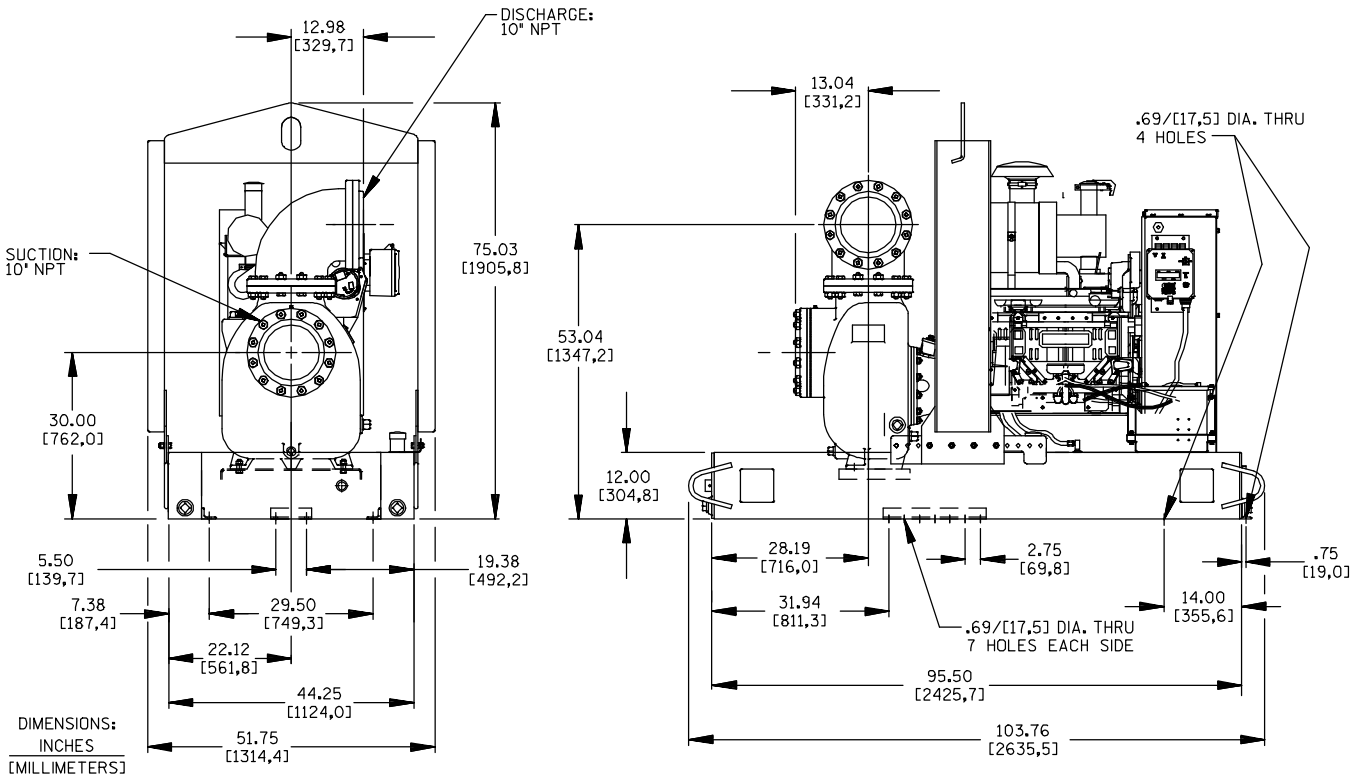
Printed in U.S.A.

Specification Data

SECTION 40, PAGE 2696

APPROXIMATE DIMENSIONS and WEIGHTS

	SKID BASE	2-WHEEL
NET WEIGHT:	3640 LBS. (1651 KG.)	3980 LBS. (1805 KG.)
SHIPPING WEIGHT:	3940 LBS. (1787 KG.)	3980 LBS. (1805 KG.)
EXPORT CRATE SIZE:	166 CU. FT. (4,7 CU. M.)	



GORMAN-RUPP PUMPS

www.grpumps.com

Specifications Subject to Change Without Notice

Printed in U.S.A.