



# Self Priming Centrifugal Pump

## Model 810A2-4045D

Size 10" x 10"

Total Head		Capacity of Pump in U.S. Gallons per Minute (GPM) at Continuous Performance			
P.S.I.	Feet				
52.0	120	560	560	560	560
43.4	100	1250	1270	1270	1270
34.7	80	1870	1920	1920	1920
26.0	60	2125	2370	2500	2500
17.3	40	2200	2550	2740	2900
8.7	20	2300	2650	2870	3100
<b>Suction Lift</b>		<b>20'</b>	<b>15'</b>	<b>10'</b>	<b>5'</b>

### PUMP SPECIFICATIONS

**Size:** 10" x 10" (254 mm x 254 mm) NPT - Female.

**Casing:** Gray Iron 30.

Maximum Operating Pressure 91 psi (627 kPa).\*

**Semi-Open Type, Two Vane Impeller:** Ductile Iron 65-45-12.  
Handles 2 1/2" (63,5 mm) Diameter Spherical Solids.

**Impeller Shaft:** Alloy Steel 4150.

**Replaceable Wear Plate:** Gray Iron 30.

**Intermediate Bracket:** Gray Iron 30.

**Seal Plate:** Gray Iron 30.

**Seal:** Double, Grease-Lubricated with Spring-Loaded Grease Cup. Sintered Bronze Stationary Seal Seats. Steel Rotating Faces. Neoprene Packing Rings. Maximum Temperature of Liquid Pumped 110°F (43°C). Maximum Suction Pressure 10 psi (69 kPa).\*

**Seal Liner:** Copper Alloy C93700.

**Flap Valve:** Neoprene w/Fabric Reinforcing, Gray Iron 30 and Ductile Iron 65-45-12.

**Radial Bearing:** Open Double Row Ball.

**Thrust Bearing:** Open Single Row Ball.

**Bearing Lubrication:** SAE 30 Non-Detergent Oil.

**Flanges:** Gray Iron 30.

**Gaskets:** Vegetable Fiber.

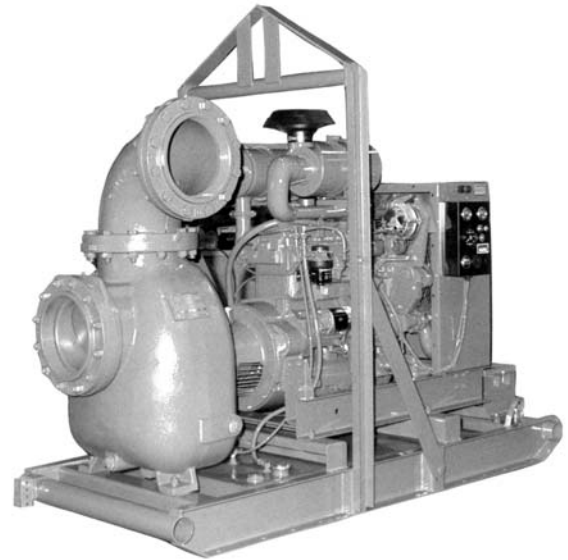
**O-Rings:** Buna-N.

**Hardware:** Standard Plated Steel.

**Standard Equipment:** Oil Level Sight Gauge, Hoisting Bail, Skid Base, Strainer and 90° Discharge Elbow.

**Optional Equipment:** Battery. High Speed (55 MPH/89 KM/H) Tandem Axle Pneumatic-Tired Wheel Kit w/wo DOT-Approved Lights and Electric Brakes. Tandem Axle Over-the-Road Trailer (Meets DOT Requirements) Available w/Either Electric or Hydraulic Surge Brakes, Running Lights, Jack Stands and Safety Cables.

\*Consult Factory for Applications Exceeding Maximum Pressure and/or Temperature Indicated.



### ENGINE SPECIFICATIONS

**Model:** John Deere 4045D.

**Type:** Four Cylinder, Four Cycle, Liquid Cooled Diesel Engine.

**Displacement:** 276 Cu. In. (4,5 liter).

**Governor:** Mechanical.

**Lubrication:** Forced Circulation.

**Air Cleaner:** Dry Type.

**Oil Reservoir:** 9 U.S. Qts. (8,5 liter) Dry;  
8 U.S. Qts. (7,5 liter) Refill.

**Fuel Tank:** 38.9 U.S. Gals. (147,3 liter).

**Full Load Operating Time:** 12.4 Hrs.

**Starter:** 12V Electric.

**Standard Features:** Low Oil Pressure and High Coolant Temperature Safety Shut Down Switches. Instrument Panel Includes: Tachometer, Hourmeter, Coolant Temperature Gauge, Oil Pressure Gauge, Vernier Throttle Control, On/Off Key Switch, and Voltmeter. Muffler w/Guard and Weather Cap.

### JOHN DEERE PUBLISHED PERFORMANCE:

Maximum Gross Continuous BHP  
72 (54 kW) @ 2500 RPM



THE GORMAN-RUPP COMPANY • MANSFIELD, OHIO

GORMAN-RUPP OF CANADA LIMITED • ST. THOMAS, ONTARIO, CANADA

www.grpumps.com

Specifications Subject to Change Without Notice

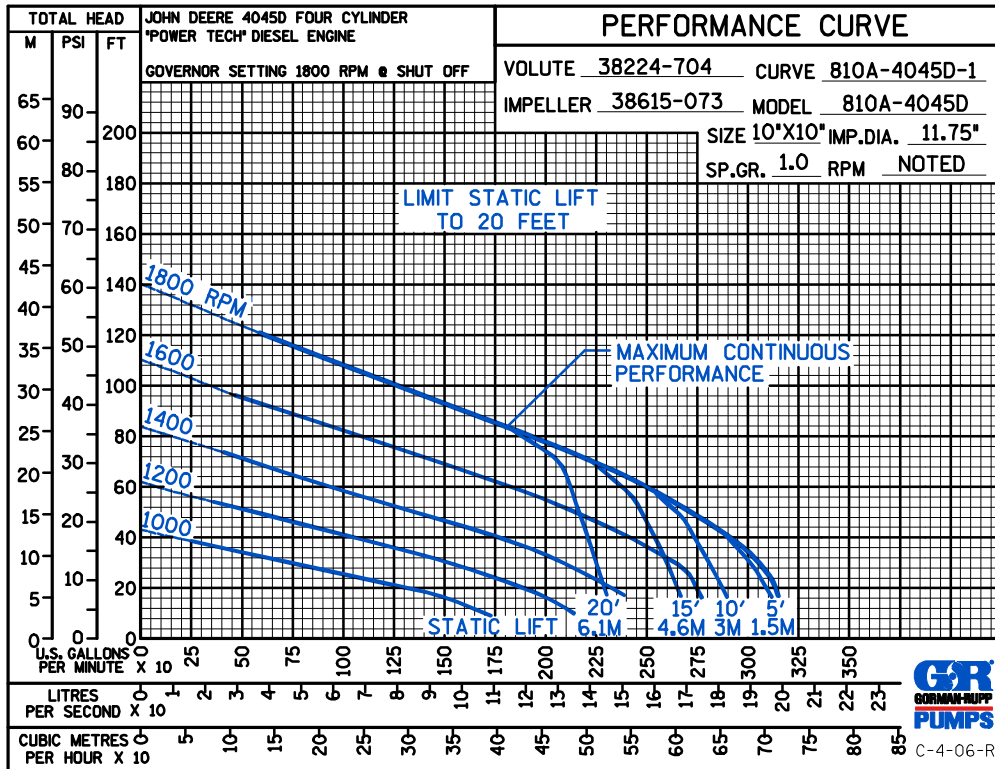
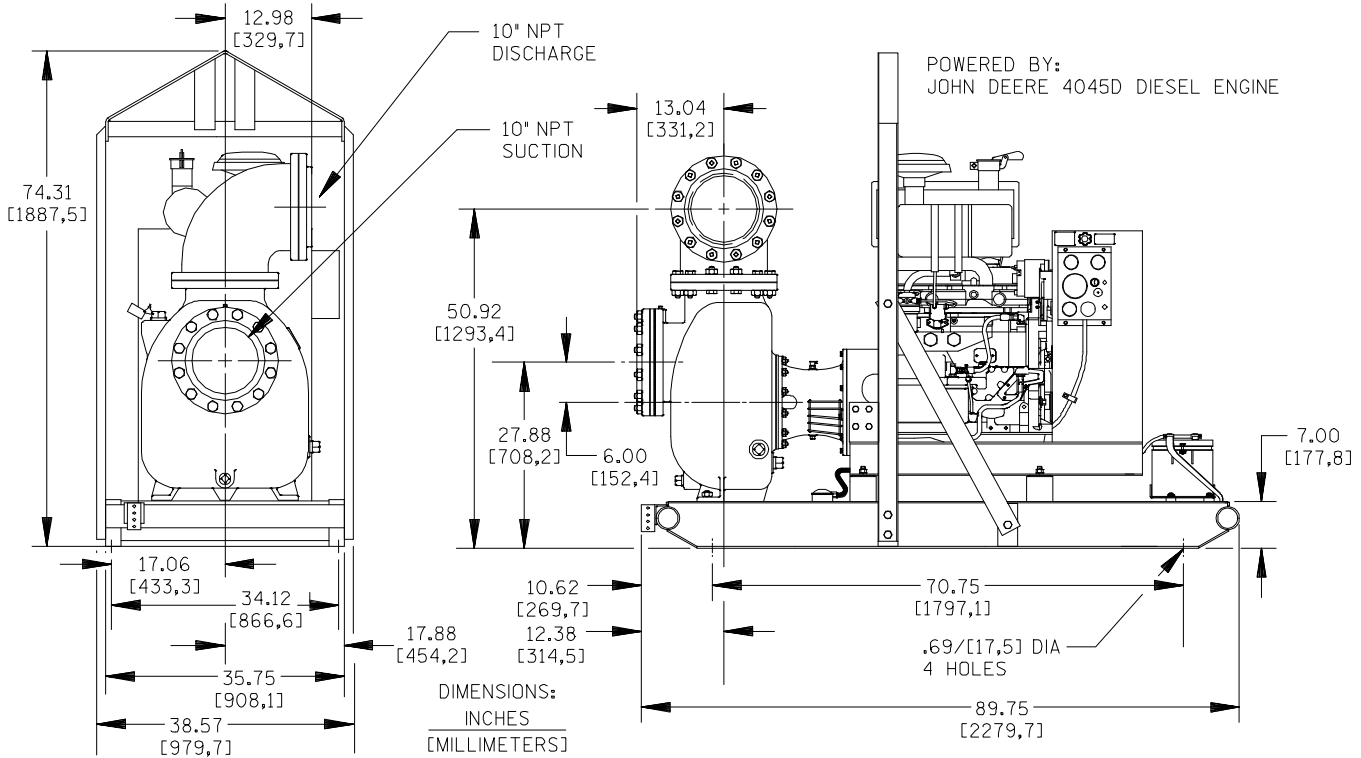
Printed in U.S.A.

**Specification Data**

SECTION 40, PAGE 2695

APPROXIMATE  
DIMENSIONS and  
WEIGHTS

	<b>SKID BASE</b>	<b>2-WHEEL</b>
<b>NET WEIGHT:</b>	2955 LBS. (1158,9 KG.)	3480 LBS. (1578,5 KG.)
<b>SHIPPING WEIGHT:</b>	3080 LBS. (1297 KG.)	3480 LBS. (1578,5 KG.)
<b>EXPORT CRATE SIZE:</b>	166 CU. FT. (4,7 CU. M.)	



**THE GORMAN-RUPP COMPANY • MANSFIELD, OHIO**

GORMAN-RUPP OF CANADA LIMITED • ST. THOMAS, ONTARIO, CANADA

Specifications Subject to Change Without Notice

Printed in U.S.A.