



Self Priming Centrifugal Pump

Model 88A2-F6L

Size 8" x 8"



125M



Total Head		Capacity Of Pump In U.S. Gallons Per Minute (GPM) At Continuous Performance				
P.S.I.	Feet					
67.6	156	440	440	440	440	440
60.7	140	880	1280	1560	1560	1560
52.0	120	960	1400	1780	1620	2000
43.4	100	1000	1480	1880	2020	2200
34.7	80	1030	1520	1920	2040	2220
26.0	60	1100	1580	1980	2100	2240
17.3	40	1140	1600	1990	2140	2250
8.7	20	1160	1640	2000	2160	2255
Suction Lift		25'	20'	15'	10'	5'



PUMP SPECIFICATIONS

Size: 8" x 8" (204 mm x 204 mm) NPT - Female.

Casing: Gray Iron 30.

Maximum Operating Pressure 111 psi (765 kPa).*

Semi-Open Type, Four Vane Impeller: Gray Iron 30.

Handles 2" (50,8 mm) Diameter Spherical Solids.

Impeller Shaft: Carbon Steel 4150.

Replaceable Wear Plate: Gray Iron 30.

Intermediate Bracket: Gray Iron 30.

Seal Plate: Gray Iron 30.

Seal: Double, Grease-Lubricated w/Spring-Loaded Grease Cup. Sintered Bronze Stationary Seal Seats. Steel Rotating Faces. Neoprene Packing Rings. Maximum Temperature of Liquid Pumped 110°F (43°C).* Maximum Suction Pressure 10 psi (69 kPa).*

Seal Liner: Copper Alloy C26000.

Flap Valve: Buna-N w/Nylon Reinforcement and Steel.

Radial and Thrust Bearings: Tapered Roller Type.

Bearing Lubrication: Grease.

Flanges: Gray Iron 30.

Gaskets: Vegetable Fiber.

Hardware: Standard Plated Steel.

Standard Equipment: Hoisting Bail. Skid Base.

90° Discharge Elbow. Strainer.

Optional Equipment: Battery. High Speed (55 MPH/89

KM/H) Tandem Axle Pneumatic-Tired Wheel Kit. [Tandem](#)

[Axle Over-the-Road Trailer.](#)

*Consult Factory for Applications Exceeding Maximum Pressure and/or Temperature Indicated.



ENGINE SPECIFICATIONS

Model: Deutz D914L6.

EPA Tier: Tier 3.

Type: Six Cylinder, Four Cycle, Air Cooled Diesel Engine.

Displacement: 395 Cu. In. (6,5 Liters).

Lubrication: Forced Circulation.

Air Cleaner: Oil Bath.

Fuel Tank: 38.9 U.S. Gals. (147,3 Liters).

Full Load Operating Time: 8.2 Hours.

Starter: 12V Electric.

Standard Features: High Oil Temperature, Low Oil Pressure, V-belt, Alternator and Start Failure Safety Shut Down Switches/Indicators. Fuel Level Gauge. Throttle Control. Instrument Panel Includes Temperature Gauge, Oil Pressure Gauge, Ammeter, Hourmeter, Tachometer, Start/Stop Key Switch, 15 Amp Fuse. Muffler w/Guard and Weather Cap.

DEUTZ PUBLISHED PERFORMANCE:

Maximum Gross Continuous B.H.P.

100.4 (74,9 kW) @ 2300 RPM



GORMAN-RUPP PUMPS

www.grpumps.com

Specifications Subject to Change Without Notice

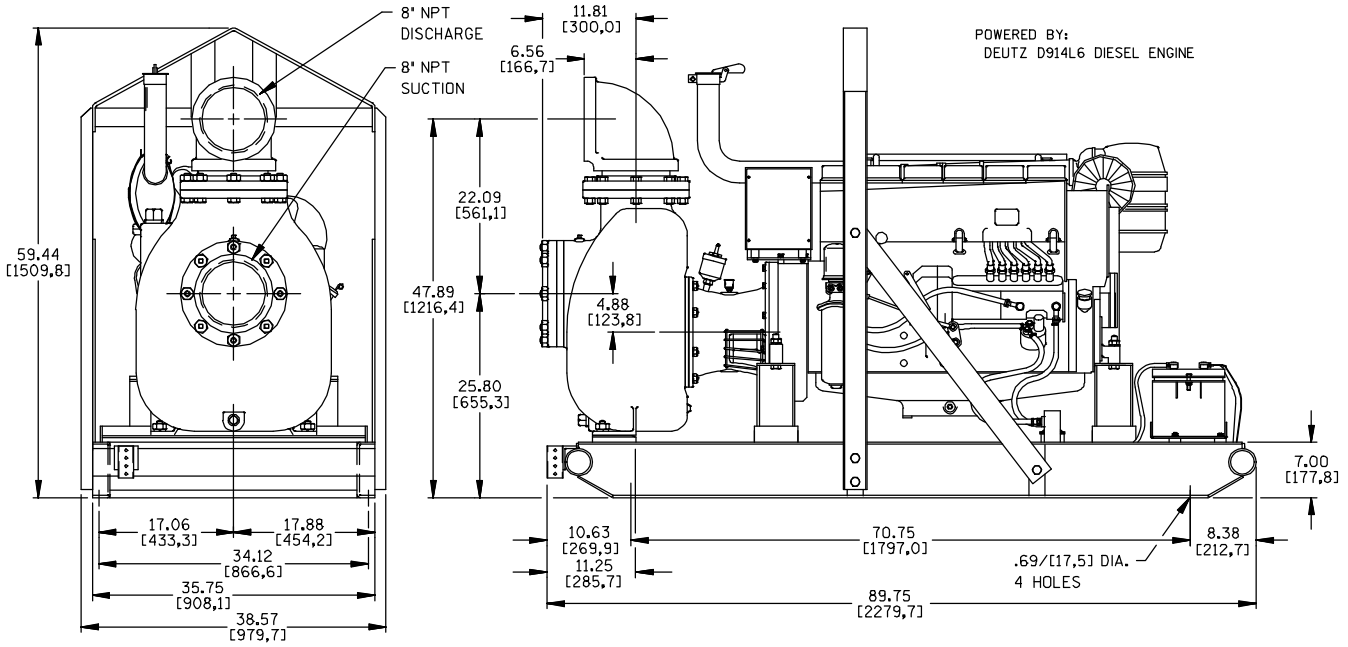
Printed in U.S.A.

Specification Data

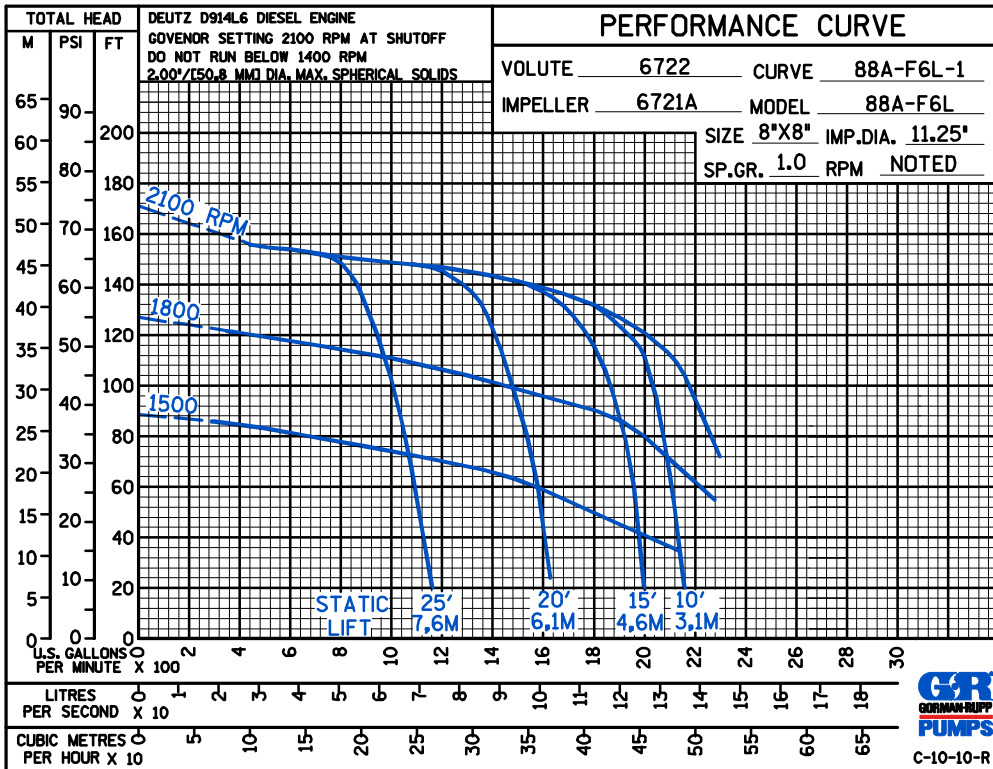
APPROXIMATE DIMENSIONS and WEIGHTS

	SKID BASE	2-WHEEL
NET WEIGHT:	2688 LBS. [1219,3 KG.]	2885 LBS. [1308,6 KG.]
SHIPPING WEIGHTS:	2813 LBS. [1275,9 KG.]	2885 LBS. [1308,6 KG.]
EXPORT CRATE:	139 CU. FT. [3,9 CU. M.]	

SECTION 40, PAGE 2555



DIMENSIONS:
INCHES
[MILLIMETERS]



GORMAN-RUPP PUMPS

www.grpumps.com

Specifications Subject to Change Without Notice

Printed in U.S.A.