

ACE



# Self Priming Centrifugal Pump

Gasoline Engine Driven  
**Model 88A2-F300**  
Size 8" x 8"

CERTIFIED PERFORMANCE



The manufacturer of this pump certifies that  
this manufacturer conforms with the  
standards of the Contractors Pump Bureau.

125 M

Total Head		Capacity Of Pump In U.S. Gallons Per Minute (GPM) At Continuous Performance				
P.S.I.	Feet					
73.7	170	660	660	660	660	660
65.0	150	860	1260	1300	1300	1300
54.2	125	980	1400	1660	1660	1660
43.4	100	1040	1490	1840	1980	2000
32.5	75	1100	1550	1920	2090	2220
21.7	50	1140	1600	1970	2130	2270
10.8	25	1160	1630	2000	2190	2320
<b>Suction Lift</b>		<b>25'</b>	<b>20'</b>	<b>15'</b>	<b>10'</b>	<b>5'</b>

## PUMP SPECIFICATIONS

**Size:** 8" x 8" (204 mm x 204 mm) N.P.T. Female.

**Pump Casing:** Gray Iron No. 30. Maximum Operating Pressure 122 psi (841 kPa).\*

**Open Type, Four Vane Impeller:** Gray Iron No. 30. Handles 2" (50,8 mm) Diameter Spherical Solids.

**Impeller Shaft:** Carbon Steel Grade 1045/1046.

**Replaceable Wear Plate:** Gray Iron No. 30.

**Intermediate Bracket:** Gray Iron No. 30.

**Seal Plate:** Gray Iron No. 30.

**Seal:** Double Grease-Lubricated with Spring Loaded Grease Cup. Sintered Bronze Stationary Seal Seats. Steel Rotating Faces. Neoprene Packing Rings. Maximum Temperature of Liquid Pumped, 110°F (43°C). \* Maximum Suction Pressure 10 psi (69 kPa).\*

**Seal Liner:** Copper Alloy C26000.

**Flap Valve:** Buna-N with Nylon and Carbon Steel Grade C-1045.

**Radial/Thrust Bearing:** Tapered Single Row Roller.

**Bearing Lubrication:** Grease.

**Flanges:** Gray Iron No. 30.

**Gaskets:** Vegetable Fiber.

**Hardware:** Standard Plated Steel.

**Hoisting Bail.**

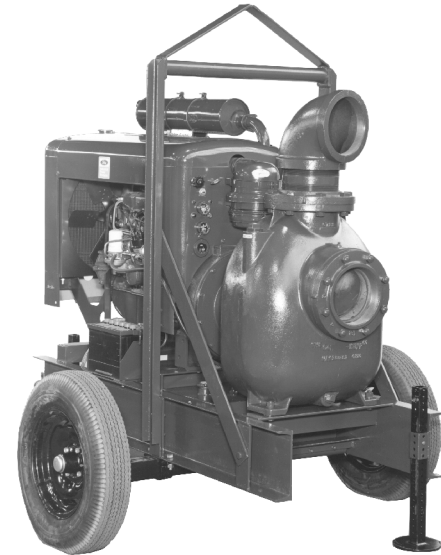
**Skid Base.**

**90° Discharge Elbow.**

**Strainer.**

**Optional Equipment:** Battery. Two Wheel Truck Assembly with P235/75R15 Pneumatic Tires. Over-the-Road Trailer (Meets D.O.T. and Transport Canada Requirements). Loss of Prime Gauge & Switch.

\*Consult Factory for Applications Exceeding Maximum Pressure and/or Temperature Indicated.



Shown with Optional Wheel Kit



## ENGINE SPECIFICATIONS

**Model:** Ford C5PG (F300).

**Type:** Six Cylinder, Four Cycle, Liquid Cooled Gasoline Engine.

**Displacement:** 300 Cu. In. (4,9 Liters).

**Governor:** Mechanical.

**Lubrication:** Pressure System.

**Air Cleaner:** Oil Bath.

**Oil Reservoir:** 7 U.S. Qts. (6,6 Liters) Dry.  
6 U.S. Qts. (5,7 Liters) Refill.

**Fuel Tank:** 38.9 U.S. Gallons (147,3 Liters).

**Full Load Operating Time:** 4.7 Hours.

**Starter:** 12 Volt Electric.

**Standard Features:** Safety Shut Down Switches for Low Oil Pressure and High Coolant Temperature. Instrument Panel with Temperature Gauge, Oil Pressure & Alternator Warning Lights. Hood and Side Panels. Muffler with Guard and Weather Cap.

## FORD PUBLISHED PERFORMANCE:

Maximum Continuous B.H.P. 101 @ 2800 RPM  
Maximum Dynamic B.H.P. 124 @ 3600 RPM



THE GORMAN-RUPP COMPANY • MANSFIELD, OHIO

GORMAN-RUPP OF CANADA LIMITED • ST. THOMAS, ONTARIO, CANADA

Specifications Subject to Change Without Notice

Printed in U.S.A.

**Specification Data**

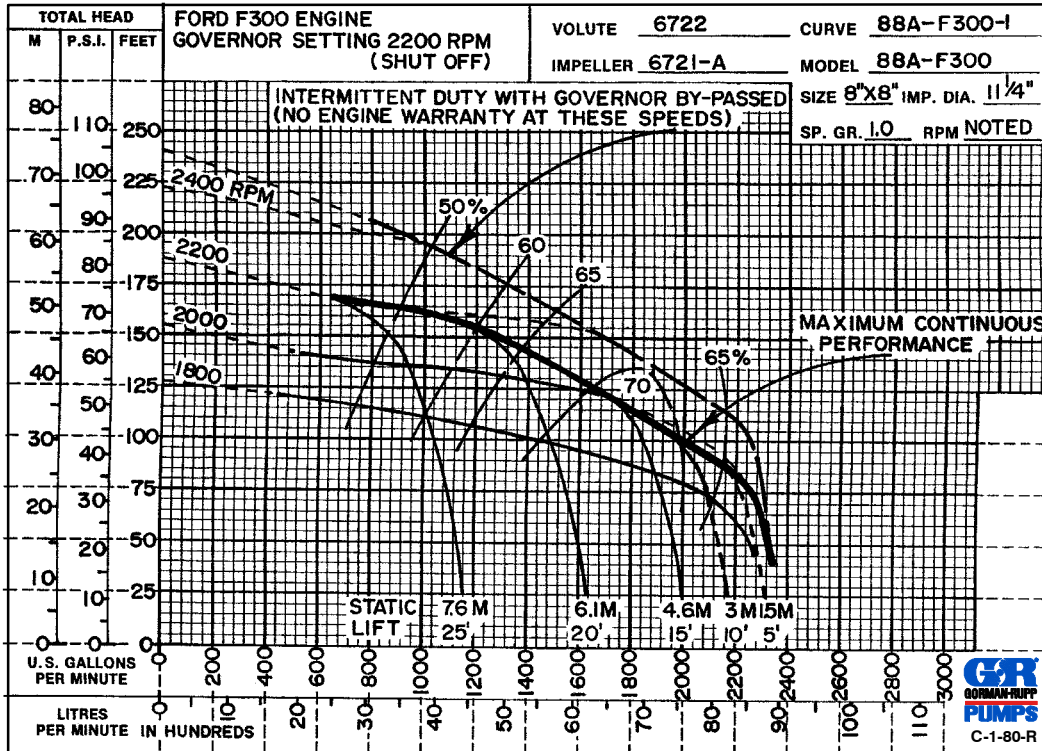
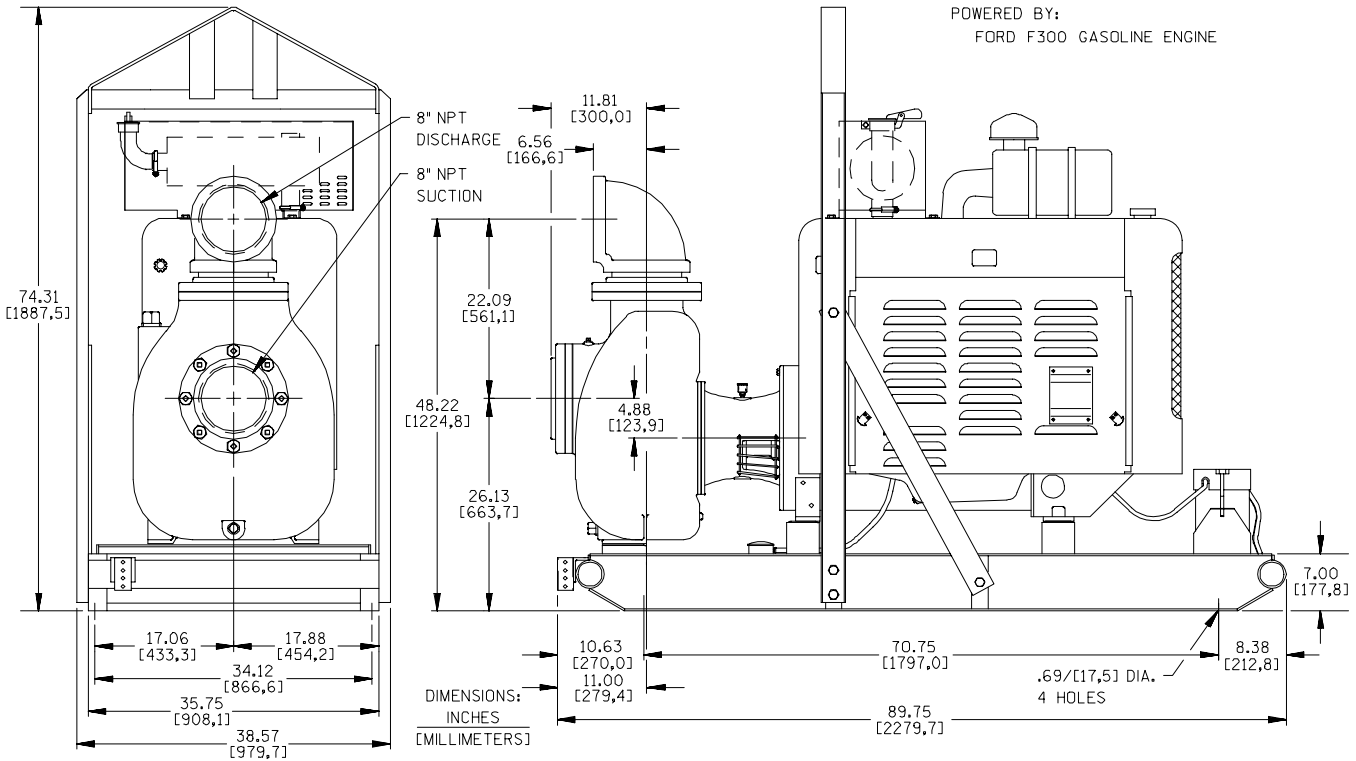
APPROXIMATE  
DIMENSIONS and  
WEIGHTS

**SKID BASE**

**2-WHEEL**

**NET WEIGHT:** 1875 LBS. [850,5 KG.] 2958 LBS. [1341,7 KG.]  
**SHIPPING WEIGHTS:** 1950 LBS. [884,5 KG.] 2958 LBS. [1341,7 KG.]  
**EXPORT CRATE:** 162.5 CU. FT. [4,6 CU. M.]

**SECTION 40, PAGE 2500**



**THE GORMAN-RUPP COMPANY • MANSFIELD, OHIO**

GORMAN-RUPP OF CANADA LIMITED • ST. THOMAS, ONTARIO, CANADA

Specifications Subject to Change Without Notice

Printed in U.S.A.