

ACE

Self Priming Centrifugal Pump



Diesel Engine Driven Model 86A2-4024T Size 6" x 6"



90 M

Total Head		Capacity Of Pump In U.S. Gallons Per Minute (GPM) At Continuous Performance			
P.S.I.	Feet				
70.7	162	360	360	360	360
70.7	160	430	430	430	430
65.0	140	750	970	990	990
54.2	120	800	1110	1290	1320
43.4	100	820	1140	1410	1550
32.5	80	830	1165	1430	1640
21.7	60	835	1180	1440	1660
10.8	40	840	1180	1450	1665
Suction Lift		25'	20'	15'	10'



Shown with Optional Wheel Kit

PUMP SPECIFICATIONS

Size: 6" x 6" (152 mm x 152 mm) N.P.T. Female.

Casing: Gray Iron 30.

Maximum Operating Pressure 114 psi (786 kPa).*

Semi-Open Type, Three Vane Impeller: Gray Iron 30.

Handles 1 3/4" (44,5 mm) Diameter Spherical Solids.

Impeller Shaft: Carbon Steel 1045.

Replaceable Wear Plate: Gray Iron 30.

Intermediate Bracket: Gray Iron 30.

Seal Plate: Gray Iron 30.

Seal: Double Grease-Lubricated with Spring Loaded Grease Cup.

Sintered Bronze Stationary Seal Seats. Steel Rotating Faces. Neoprene Packing Rings. Maximum Temperature of Liquid Pumped, 110°F (43°C).*

Maximum Suction Pressure 10 psi (69 kPa).*

Seal Liner: Copper Alloy C26000.

Flap Valve: Alloy Steel and Buna-N^w/Nylon Reinforcement.

Radial/Thrust Bearing: Tapered Roller Type.

Bearing Lubrication: Grease.

Flange: Gray Iron 30.

Gaskets: Vegetable Fiber.

Hardware: Standard Plated Steel.

Hoisting Bail.

Skid Base.

90° Discharge Elbow.

Strainer.

**Consult Factory for Applications Exceeding Maximum Pressure and/or Temperature Indicated.*

Optional Equipment: Battery. High Speed (55 MPH/89 KM/H) Single Axle Pneumatic-Tired Wheel Kit^{w/wo} DOT-Approved Lights and Electric Brakes. Single Axle Over-the-Road Trailer (Meets DOT Requirements) Available^{w/}Either Electric or Hydraulic Surge Brakes, Running Lights, Jack Stands and Safety Cables.



ENGINE SPECIFICATIONS

Model: John Deere 4024T "Power Tech".

Type: Four Cylinder, Four Cycle, Turbocharged Liquid Cooled Diesel Engine.

Displacement: 149 Cu. In. (2,44 Liters).

Governor: Mechanical.

Lubrication: Forced Circulation.

Air Cleaner: Dry Type.

Oil Reservoir: .85 U.S. Qts. (8 Liters) Dry;
7.6 U.S. Qts. (7.2 Liters) Refill.

Fuel Tank: 61 U.S. Gallons (231 Liters).

Full Load Operating Time: 20.3 Hrs.

Starter: 12V Electric.

Standard Features: Low Oil Pressure, High Coolant Temperature and Start Failure Safety Shut Down Switches/Indicators. Throttle Control. Instrument Panel Includes: Tachometer, Voltmeter, Hourmeter, Coolant Temperature and Oil Pressure Indicators, Start/Stop Key Switch, 10 Amp Fuse, Muffler^{w/}Guard and Weather Cap.

JOHN DEERE PUBLISHED PERFORMANCE:

Maximum Gross Continuous B.H.P. 52 (38.8 kW) @ 2800 RPM



THE GORMAN-RUPP COMPANY • MANSFIELD, OHIO

GORMAN-RUPP OF CANADA LIMITED • ST. THOMAS, ONTARIO, CANADA

www.grpumps.com

Specifications Subject to Change Without Notice

Printed in U.S.A.

Specification Data

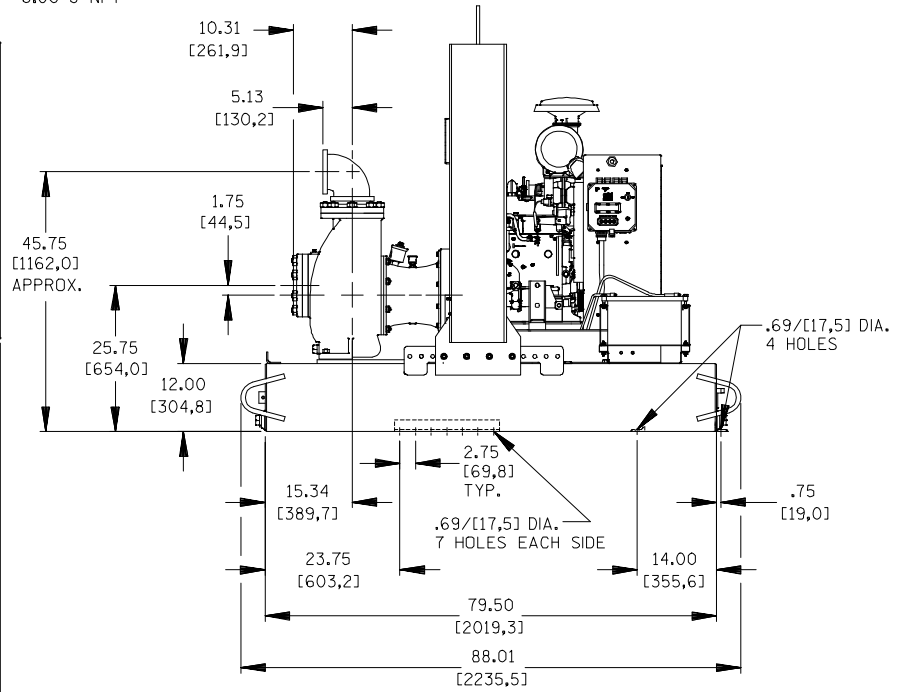
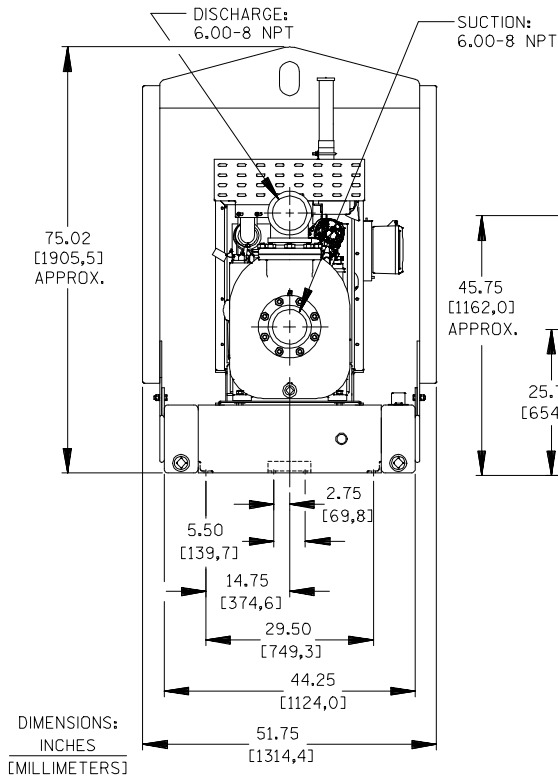
SKID BASE

2-WHEEL

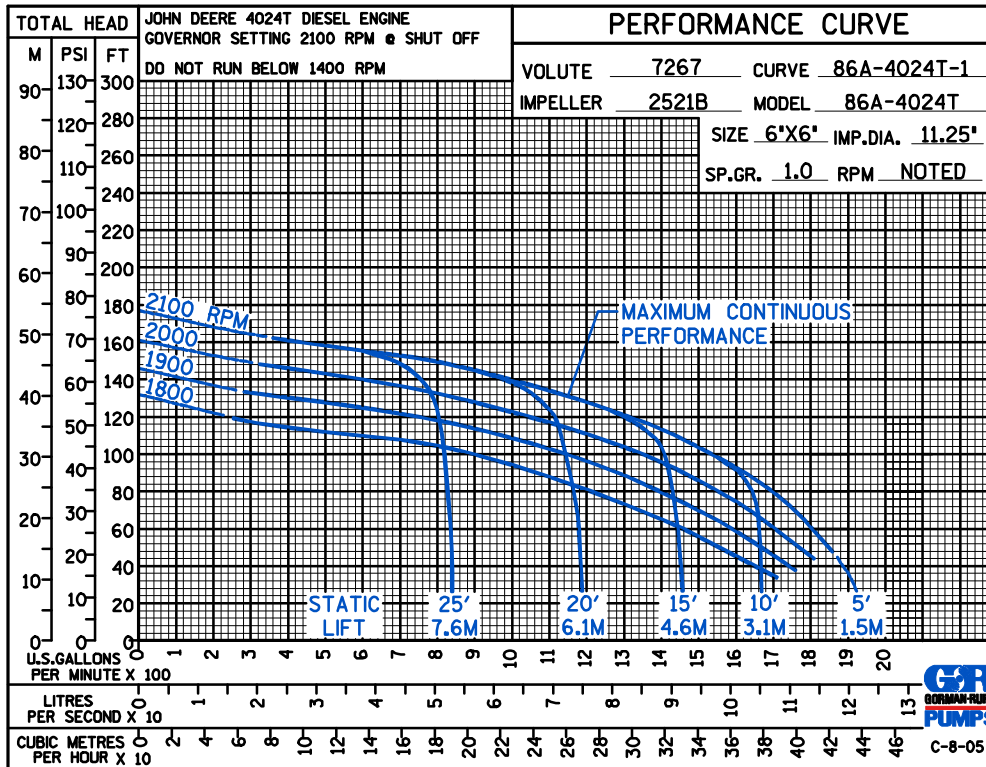
APPROXIMATE
DIMENSIONS and
WEIGHTS

NET WEIGHT: 2415 LBS. [1095 KG.] **2870 LBS. [1301 KG.]**
SHIPPING WEIGHTS: 2600 LBS. [1179 KG.] **2870 LBS. [1301 KG.]**
EXPORT CRATE: 255 CU. FT. [7.2 CU. M.]

SECTION 40, PAGE 1875



POWERED BY: JOHN DEERE 4024T TURBOCHARGED DIESEL ENGINE



THE GORMAN-RUPP COMPANY • MANSFIELD, OHIO

GORMAN-RUPP OF CANADA LIMITED • ST. THOMAS, ONTARIO, CANADA

Specifications Subject to Change Without Notice

Printed in U.S.A.