



Gasoline Engine Driven
Self Priming Centrifugal Pump
Models 83B52-CH13
and 83B52-CH13 S/G
Size 3" x 3"



20 M

Total Head		Capacity of Pump in U.S. Gallons per Minute (GPM) at Continuous Performance				
P.S.I.	Feet					
60.7	140	80	80	80	80	80
52.0	120	164	180	180	180	180
43.4	100	175	238	252	252	252
34.7	80	179	252	292	302	302
26.0	60	182	258	304	346	348
17.3	40	184	262	311	363	384
Suction Lift		25'	20'	15'	10'	5'

Photo unavailable at time of printing

PUMP SPECIFICATIONS

- Size:** 3" x 3" (76 mm x 76 mm) NPT - Female.
- Casing:** Gray Iron No. 30.
Maximum Operating Pressure 96 psi (662 kPa).*
- Semi-Open Type, Four Vane Impeller:** Gray Iron No. 30.
Handles 13/16" (20,6 mm) Diameter Spherical Solids.
- Replaceable Wear Plate:** Carbon Steel No. 1026.
- Intermediate Bracket:** Gray Iron No. 30.
- Seal:** Type 31, Mechanical, Self-Lubricated. Silicon Carbide Rotating and Stationary Faces. Fluorocarbon Elastomers (DuPont Viton® or Equivalent). Stainless Steel No. 304 Cage and Spring. Maximum Temperature of Liquid Pumped, 160°F (71°C).*
- Shaft Sleeve:** Alloy Steel No. 4130.
- Flap Valve:** Buna-N ^w/Nylon Reinforcement; Gray Iron No. 30.
- Discharge Service Tee:** Gray Iron No. 30.
- Flange:** Gray Iron No. 25.
- Gaskets:** Vegetable Fiber.
- Hardware:** Standard Plated Steel.
- Standard Equipment:** Roll Cage ^w/Rubber Feet. 90° Strainer.
- Optional Equipment:** Battery (**S/G Model Only**).
Two Wheel Truck Assembly with 2.75" x 10.00" (70 mm x 254 mm) Semi-Pneumatic Tires.

**Consult Factory for Applications Exceeding Maximum Pressure and/or Temperature Indicated.*

83B52-CH13 S/G (SHOWN)



ENGINE SPECIFICATIONS

- Model:** Kohler CH13.
- Type:** Single Cylinder, Air Cooled, Overhead Valve, Gasoline Engine.
- Displacement:** 24.3 Cu. In. (398 cc).
- Cylinder:** Aluminum Alloy ^w/Cast Iron Liner.
- Governor:** Mechanical; Adjustable.
- Oil Reservoir:** 2.1 U.S. Qts. (1,9 liter).
- Air Cleaner:** Dual Element ^w/Precleaner.
- Fuel Tank:** 5 U.S. Qts. (4,7 liter).
- Full Load Operating Time:** 1.2 Hrs.
- Starter:** Recoil or 12V Electric ^w/15A Alternator (**S/G Model Only**).
- Ignition System:** Electronic; Solid State.
- Standard Equipment:** Muffler ^w/Guard. Manual Choke and Throttle Control ^w/Top Speed Limit. Oil Sentry™ Shut Down (**S/G Model Only**). Oil Fill ^w/Dipstick; Drain Port Each Side.

KOHLER PUBLISHED PERFORMANCE:
Maximum Continuous 10.4 BHP (7,7 kW) @ 3600 RPM



THE GORMAN-RUPP COMPANY • MANSFIELD, OHIO

GORMAN-RUPP OF CANADA LIMITED • ST. THOMAS, ONTARIO, CANADA

www.grpumps.com

Specifications Subject to Change Without Notice

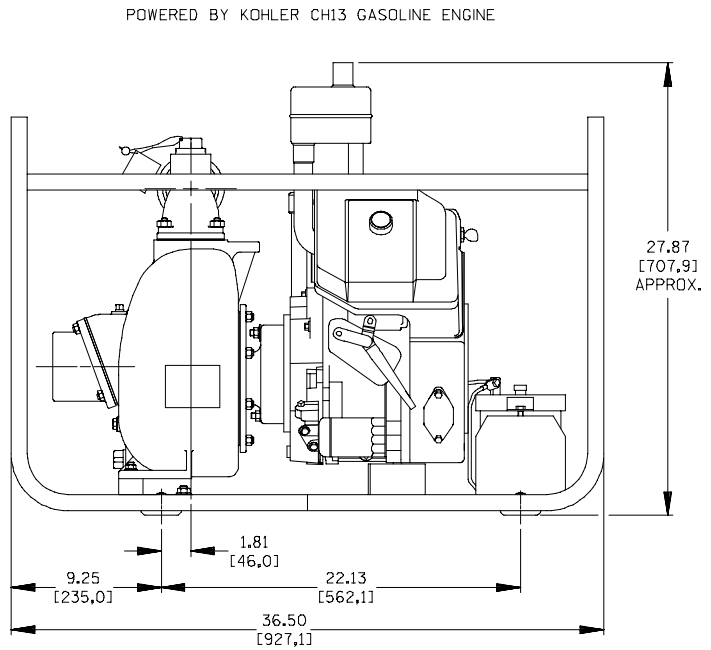
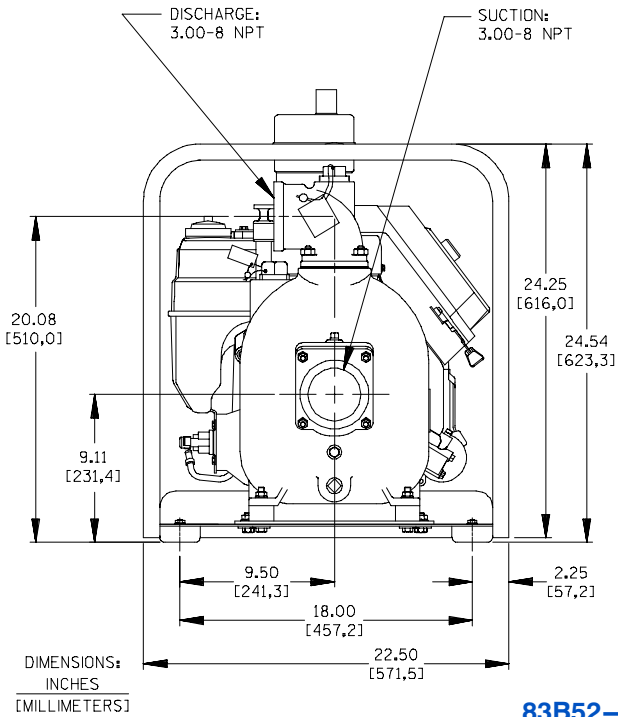
Printed in U.S.A.

Specification Data

SECTION 40, PAGE 1150

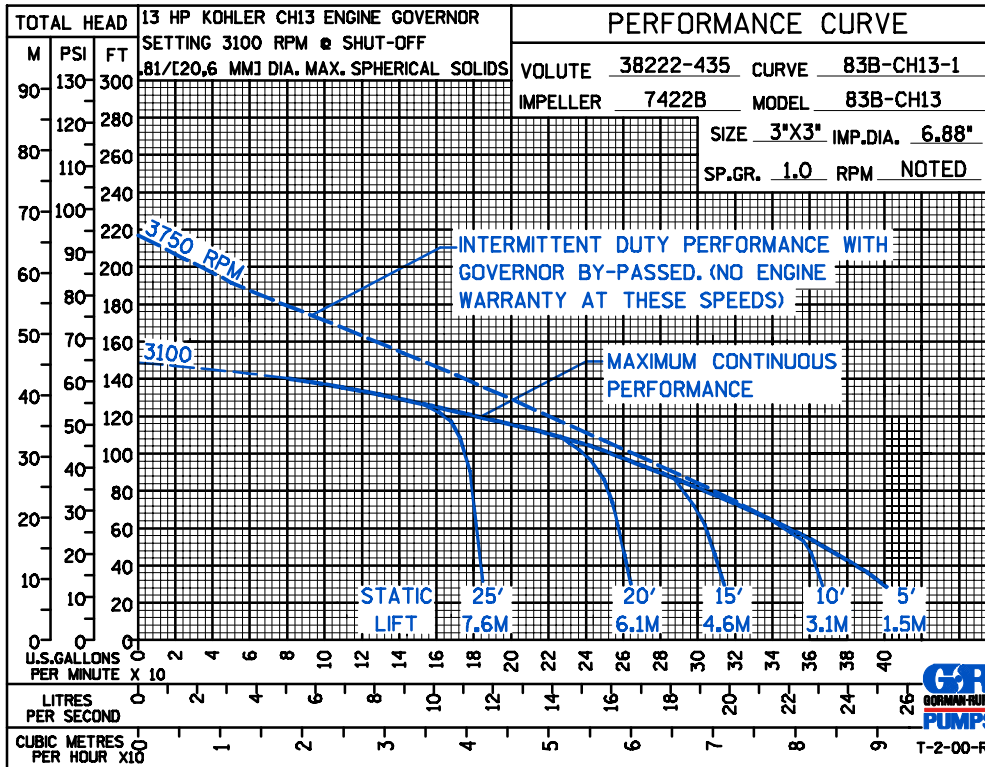
APPROXIMATE
DIMENSIONS and WEIGHTS

	WITHOUT S/G	WITH S/G
NET WEIGHT:	234 LBS. (106 KGS.)	237 LBS. (107 KGS.)
SHIPPING WEIGHT:	311 LBS. (141 KGS.)	314 LBS. (142 KGS.)
EXPORT CRATE SIZE:	28.0 CU. FT. (0.8 CU. M.)	
WHEEL KIT ADD 46 LBS. (21 KG.); SHIPPING CRATE (SEPARATE) 3 CU. FT. (0.1 CU. M.)		



POWERED BY KOHLER CH13 GASOLINE ENGINE

83B52-CH13 S/G (SHOWN)



THE GORMAN-RUPP COMPANY • MANSFIELD, OHIO

GORMAN-RUPP OF CANADA LIMITED • ST. THOMAS, ONTARIO, CANADA

Specifications Subject to Change Without Notice

Printed in U.S.A.