



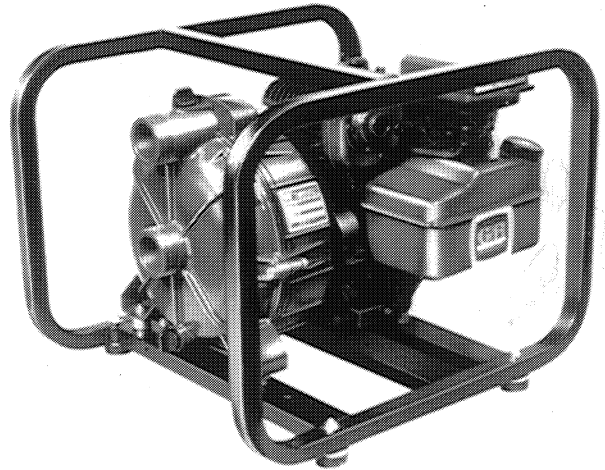
Self Priming Centrifugal Pump

Gasoline Engine Driven

Model 82B1 - 13

Size 2" x 2"

Total Head		Capacity of Pump in U.S. Gallons per Minute (GPM) at Continuous Performance				
PS.I.	Feet					
44.7	103	20	20	20	20	20
43.4	100	28	28	28	28	28
39.0	90	57	62	62	62	62
34.7	80	62	86	90	90	90
30.3	70	64	94	111	115	115
26.0	60	66	96	120	134	136
21.7	50	68	98	122	145	152
17.3	40	70	99	124	148	163
13.0	30	71	100	126	151	168
8.7	20	73	100	127	153	172
Suction Lift		25'	20'	15'	10'	5'



Do not use in explosive atmosphere or for pumping volatile flammable liquids.

PUMP SPECIFICATIONS

Size: 2" x 2" NPT (51 mm x 51 mm) - Male.
Casing: Powder Coated Die Cast Aluminum Alloy No. 380. Maximum Operating Pressure 71 psi (4,9 kg/cm²).*
Open Type, Six Vane Impeller: Gray Iron No. 30. Handles 5/8" (15,9 mm) Diameter Spherical Solids.
Volute Scroll: Gray Iron No. 30.
Seal: Mechanical, Self-Lubricated. Silicon Carbide Rotating and Stationary Faces. Fluorocarbon Elastomers (DuPont Viton® or Equivalent). Stainless Steel Cage and Spring. Maximum Temperature of Liquid Pumped 160°F (71°C).*

**Consult Factory for Applications Exceeding Maximum Pressure and/or Temperature Indicated.*

Shaft Sleeve: Stainless Steel.
Flap Valve: EPDM Rubber w/Steel Reinforcement.
O-Rings: EPDM Rubber.
Fill/Drain Plugs: Plastic.
Internal Wetted Hardware: Stainless Steel.
External Hardware: Standard Plated Steel.

Standard Equipment: Strainer. Roll Cage w/Rubber Feet.

Optional Equipment: Two Wheel Truck Assembly with 10" x 2.75" (254 mm x 70 mm) Semi-Pneumatic Tires.

ENGINE SPECIFICATIONS

Model: Briggs & Stratton 13.
Type: Single Cylinder, Four Cycle, Air Cooled, Gasoline Engine.
Displacement: 12.57 Cu. In. (206 cc).
Carburetor: Pulsa-Jet.
Governor: Mechanical.
Lubrication: Splash System.
Air Cleaner: Paper Element.
Oil Reservoir: 1.25 U.S. Pts. (0,6 liter).
Fuel Tank: 3 U.S. Qts. (2,8 liter).
Full Load Operating Time: 2.0 Hrs.
Starter: Rope Rewind.

Standard Equipment: Muffler w/Deflector. Manual Choke, Stop, and Friction Control with Top Speed Limit. Oilgard™ Low Oil Shut Down.

BRIGGS & STRATTON PUBLISHED PERFORMANCE:

Maximum Continuous 4.2 BHP (3,1 kW)
 @ 3600 RPM
 Maximum Dynamic 5.0 BHP (3,7 kW)
 @ 3600 RPM



THE GORMAN-RUPP COMPANY • MANSFIELD, OHIO

GORMAN-RUPP OF CANADA LIMITED • ST. THOMAS, ONTARIO, CANADA

Specifications Subject to Change Without Notice

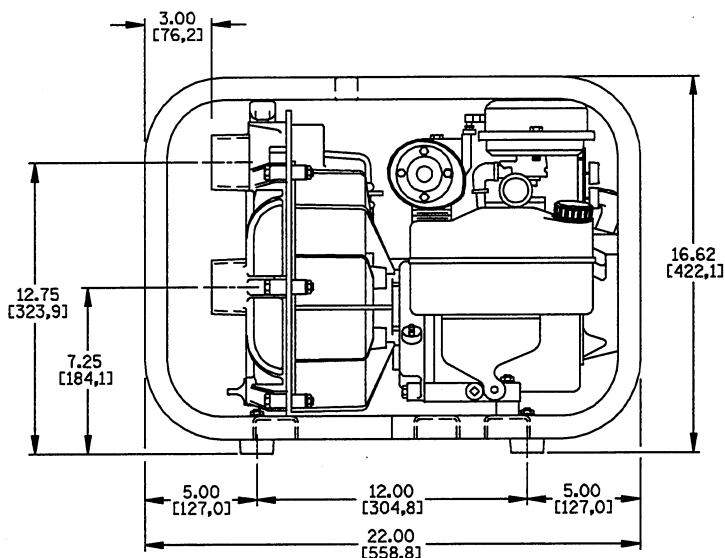
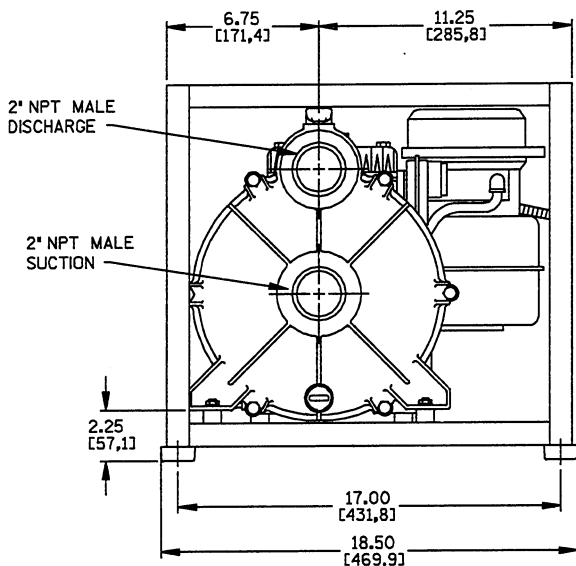
Printed in U.S.A.

Specification Data

SECTION 40, PAGE 497

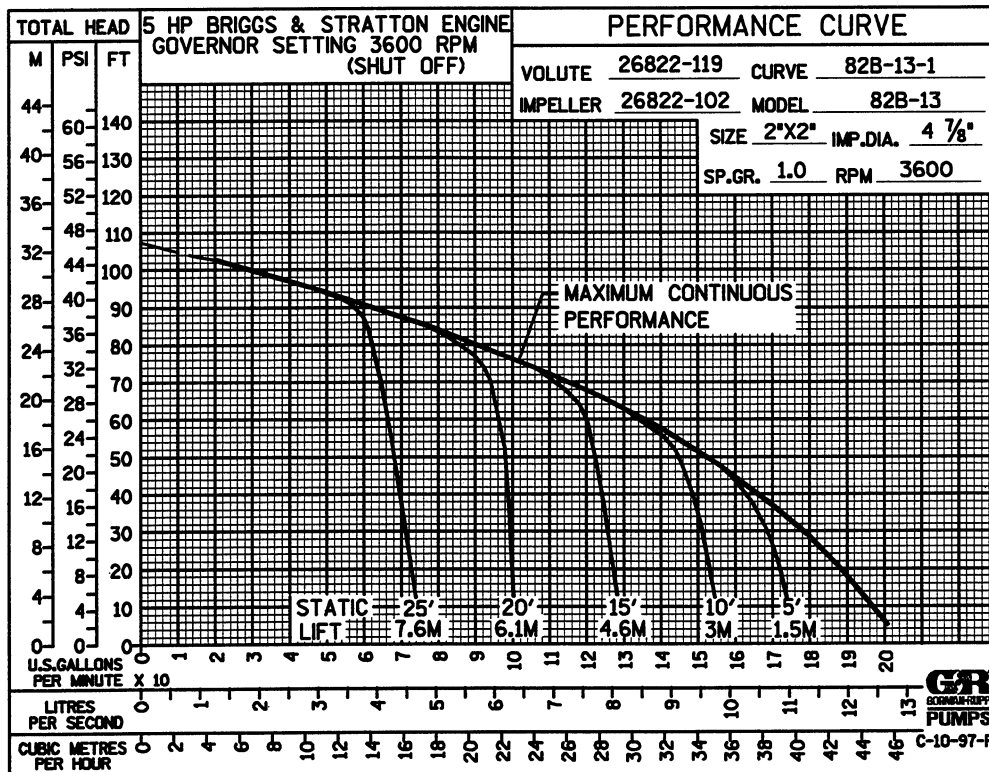
APPROXIMATE DIMENSIONS and WEIGHTS

NET WEIGHT: 73 LBS. (33 KG.)
 SHIPPING WEIGHT: 78 LBS. (35 KG.)
 EXPORT CRATE SIZE: 4.8 CU. FT. (0,14 CU. M.)
 WHEEL KIT ADD 25 LBS. (11.3 KG.); SHIPPING CRATE (SEPARATE) 3 CU. FT. (0,1 CU. M.)



DIMENSIONS:
 INCHES
 [MILLIMETERS]

POWERED BY BRIGGS & STRATTON 13 ENGINE.



THE GORMAN-RUPP COMPANY • MANSFIELD, OHIO

GORMAN-RUPP OF CANADA LIMITED • ST. THOMAS, ONTARIO, CANADA

Specifications Subject to Change Without Notice

Printed in U.S.A.