

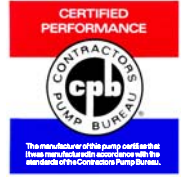
Gasoline Engine Driven

ACEGU



Self Priming Centrifugal Pump

Model 82D52-11



Size 2" x 2"

8M

Total Head		Capacity of Pump in U.S. Gallons per Minute (GPM) at Continuous Performance				
P.S.I.	Feet					
39.9	92	30	30	30	30	30
39.0	90	40	40	40	40	40
34.7	80	67	82	82	82	82
30.3	70	74	97	106	106	106
26.0	60	78	104	122	126	126
21.7	50	81	108	130	142	142
17.3	40	84	109	134	151	155
13.0	30	85	110	135	156	168
8.7	20	86	111	137	160	177
Suction Lift		25'	20'	15'	10'	5'



PUMP SPECIFICATIONS

Size: 2" x 2" (51 mm x 51 mm) NPT - Female

Casing: Gray Iron 30.

Maximum Operating Pressure 65 psi (448 kPa) *

Semi-Open Type, Three Vane Impeller: Ductile Iron 65-45-12.

Handles 5/8" (15,9 mm) Diameter Spherical Solids.

Replaceable Wear Plate: Steel 1018.

Intermediate Bracket: Gray Iron 30.

Seal: Type 31, Mechanical, Self-Lubricated. Silicon Carbide Rotating and Stationary Faces. Fluorocarbon Elastomers (DuPont Viton® or Equivalent). Stainless Steel 316 Cage and Spring. Maximum Temperature of Liquid Pumped 160°F (71°C) *.

Shaft Sleeve: Stainless Steel 304.

Flap Valve: Buna-N w/Nylon Reinforcement, Gray Iron 30 and Steel.

Suction Flange: Gray Iron 30.

Gaskets: Vegetable Fiber.

Hardware: Standard Plated Steel.

Standard Equipment: 90° Ductile Iron Discharge Elbow. Rollover Base with Rubber Feet.

Optional Equipment: Wheel Kit with 10" x 2.75" (254 mm x 70 mm) Semi-Pneumatic Tires.

**Consult Factory for Applications Exceeding Maximum Pressure and/or Temperature Indicated.*



ENGINE SPECIFICATIONS

Model: Briggs & Stratton Model 11.

Type: Single Cylinder, Four Cycle, Air Cooled, Overhead Valve, Gasoline Engine.

Displacement: 11.57 Cu. In. (190 cc).

Carburetor: Side Draft Venturi.

Governor: Mechanical.

Lubrication: Splash System.

Air Cleaner: Paper Element.

Oil Reservoir: 20 U.S. Oz. (0,6 liter).

Fuel Tank: 3.0 U.S. Qts. (2.8 liter).

Full Load Operating Time: 2.9 Hrs.

Starter: Rope Rewind.

Standard Equipment: Muffler w/Guard. Manual Choke and Throttle Control w/Top Speed Limit. Magnatron Ignition. Dual Oil Fill/Drain Plugs.



THE GORMAN-RUPP COMPANY • MANSFIELD, OHIO

GORMAN-RUPP OF CANADA LIMITED • ST. THOMAS, ONTARIO, CANADA

www.grpumps.com

Specifications Subject to Change Without Notice

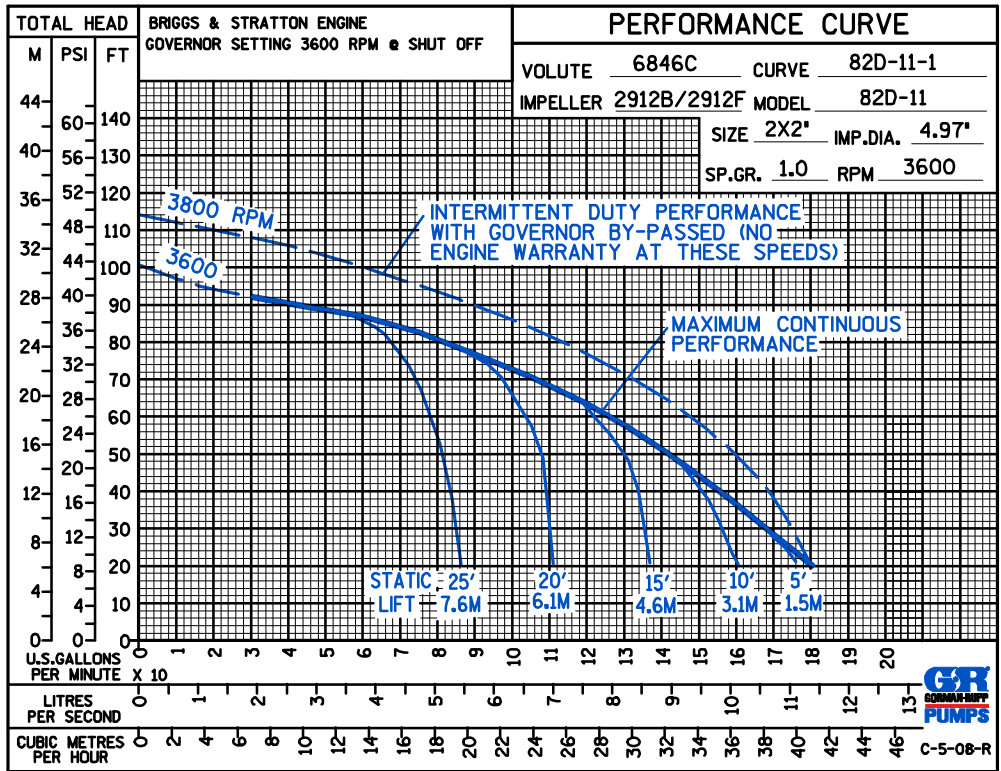
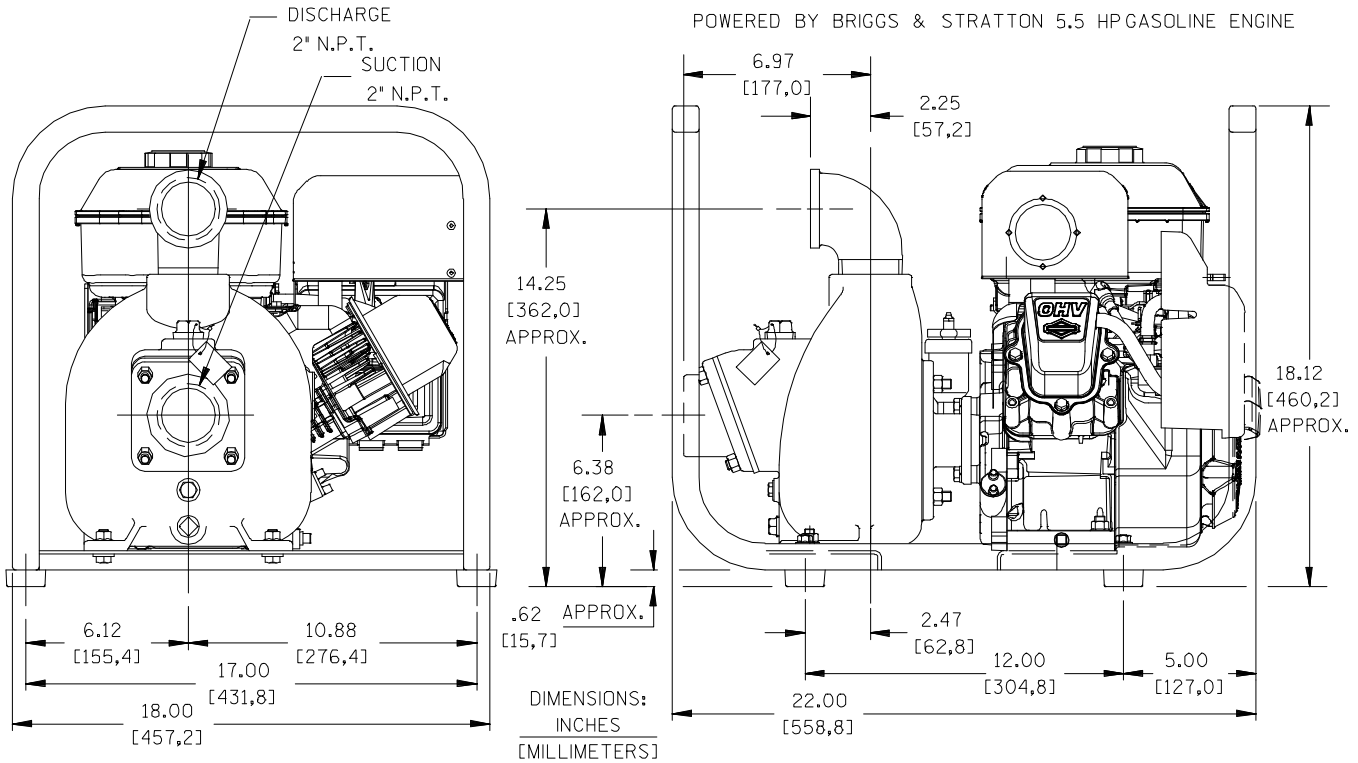
Printed in U.S.A.

Specification Data

APPROXIMATE
DIMENSIONS and WEIGHTS

NET WEIGHT 76 LBS. (34 KG.) **SHIPPING WEIGHT** 81 LBS. (37 KG.) **EXPORT CRATE SIZE** 4.6 LBS. (0,13 CU. M.)
91 LBS. (41 KG.) **101 LBS. (46 KG.)** **4.6 LBS. (0,13 CU. M.)**
WHEEL KIT ADD 25 LBS. (11,3 KG.);
SHIPPING CRATE (SEPARATE) 3 CU. FT. (0,1 CU. M.).

SECTION 40, PAGE 461



THE GORMAN-RUPP COMPANY • MANSFIELD, OHIO

GORMAN-RUPP OF CANADA LIMITED • ST. THOMAS, ONTARIO, CANADA

Specifications Subject to Change Without Notice

Printed in U.S.A.