

ACEGU

Self Priming Centrifugal Pump



Gasoline Engine Driven

Model 82D-13 and 82D2-13

Size 2" x 2"

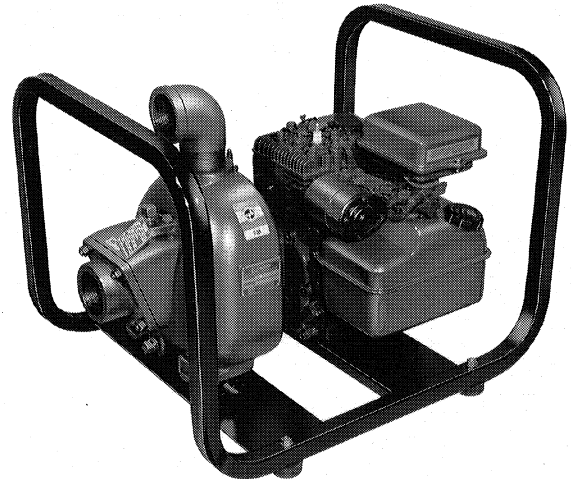
CERTIFIED PERFORMANCE



The Manufacturer agrees to file their pump performance in accordance with the guidelines of the Contractors Pump Bureau.

8M

Total Head		Capacity of Pump in U.S. Gallons per Minute (GPM) at Continuous Performance				
P.S.I.	Feet					
41.6	96	30	30	30	30	30
39.0	90	40	40	40	40	40
34.7	80	68	82	82	82	82
30.3	70	74	97	105	105	105
26.0	60	78	104	122	126	126
21.7	50	82	108	130	142	142
17.3	40	84	109	134	151	155
13.0	30	85	110	135	156	168
8.7	20	86	111	137	160	177
Suction Lift		25'	20'	15'	10'	5'



WARNING!

Do not use in explosive atmosphere or for pumping volatile flammable liquids.

PUMP SPECIFICATIONS

Size: 2" x 2" NPT (51 mm x 51 mm) - Female
Casing: (82D-13) Aluminum No. 356-T6 with Gray Iron No. 30 Cutwater Insert. (82D2-13) Gray Iron No. 30. Maximum Operating Pressure 68 psi (4,8 kg/cm²).
Open Type, Three Vane Impeller: Gray Iron No. 30. Handles 5/8" (15,9 mm) Diameter Spherical Solids.
Replaceable Wear Plate: Steel No. 1018.
Intermediate Bracket: Gray Iron No. 30.
Seal: Double Grease-Lubricated with Spring Loaded Grease Cup. Sintered Bronze Stationary Seal Seats. Steel Rotating Faces. Maximum Temperature of Liquid Pumped, 110°F (43°C). * Maximum Suction Pressure 10 psi (0,7 kg/cm²).
**Consult Factory for Applications Exceeding Maximum Pressure and/or Temperature Indicated.*
Seal Liner: Brass No. 70-30.
Flap Valve: Buna-N w/Nylon Reinforcement, Gray Iron No. 30.
Flange: Gray Iron No. 30.
Gaskets: Vegetable Fiber.
Hardware: Standard Plated Steel.
Standard Equipment: Roll Cage w/Rubber Feet. Strainer. 90° Discharge Elbow.
Optional Equipment: Two Wheel Truck Assembly with 10" x 2.75" (254 mm x 70 mm) Semi-Pneumatic Tires.

ENGINE SPECIFICATIONS

Model: Briggs & Stratton 13.
Type: Single Cylinder, Four Cycle, Air Cooled, Gasoline Engine.
Displacement: 12.57 Cu. In. (206 cc).
Carburetor: Pulsa-Jet.
Governor: Mechanical.
Lubrication: Splash System.
Air Cleaner: Paper Element.
Oil Reservoir: 1.25 U.S. Pts. (0,6 liter).
Fuel Tank: 3 U.S. Qts. (2,8 liter).
Full Load Operating Time: 2.6 Hrs.
Starter: Rope Rewind.

Standard Equipment: Muffler w/Deflector. Manual Choke, Stop, and Friction Control with Top Speed Limit. Oilgard™ Low Oil Shut Down.

BRIGGS & STRATTON PUBLISHED PERFORMANCE:

Maximum Continuous 4.2 BHP (3,1 kW) @ 3600 RPM
 Maximum Dynamic 5.0 BHP (3,7 kW) @ 3600 RPM



THE GORMAN-RUPP COMPANY • MANSFIELD, OHIO

GORMAN-RUPP OF CANADA LIMITED • ST. THOMAS, ONTARIO, CANADA

Specifications Subject to Change Without Notice

Printed in U.S.A.

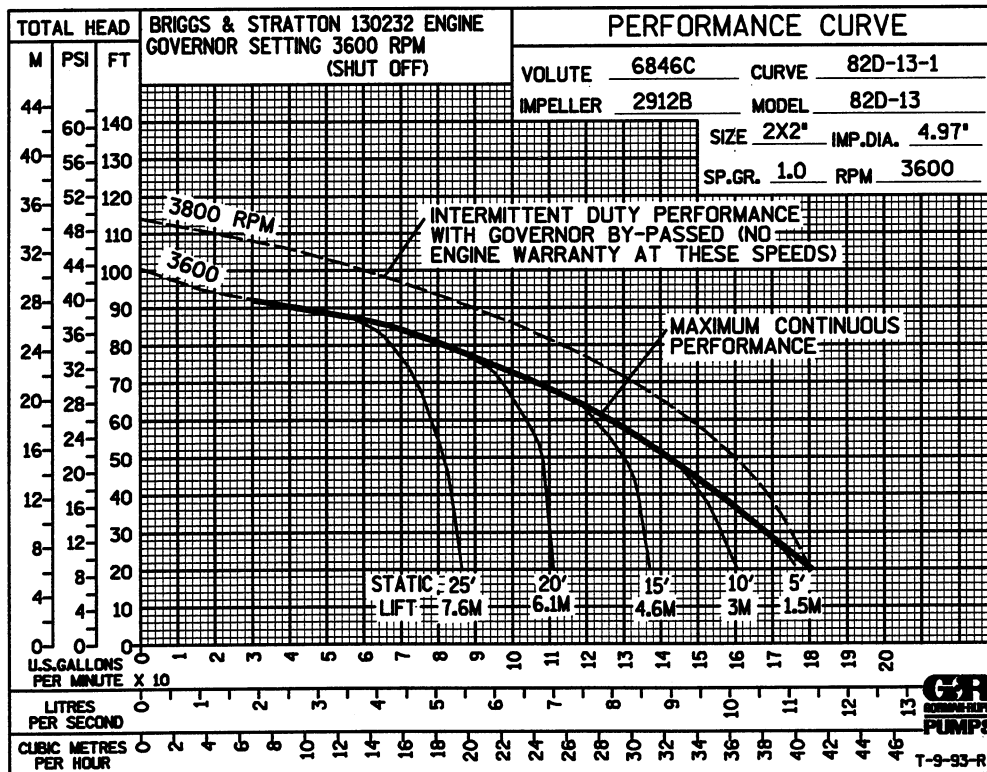
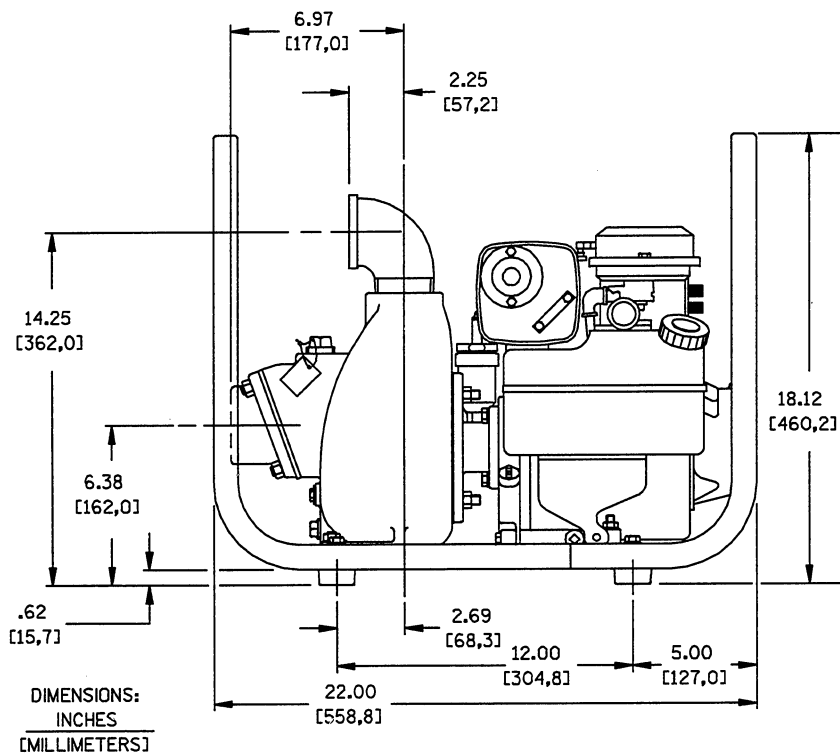
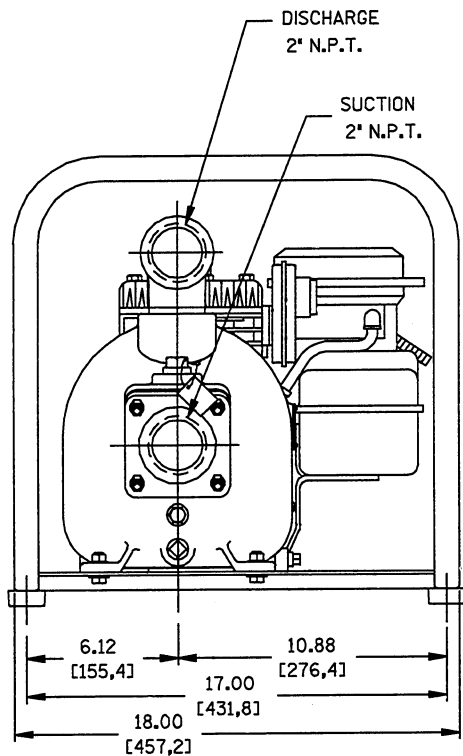
Specification Data

APPROXIMATE
DIMENSIONS and WEIGHTS

MODEL	NET WEIGHT	SHIPPING WEIGHT	EXPORT CRATE SIZE
82D-13	76 LBS. (34 KG.)	81 LBS. (37 KG.)	4.6 LBS. (0,13 CU. M.)
82D2-13	91 LBS. (41 KG.)	101 LBS. (46 KG.)	4.6 LBS. (0,13 CU. M.)

WHEEL KIT ADD 25 LBS. (11,3 KG.); SHIPPING CRATE (SEPARATE) 3 CU. FT. (0,1 CU. M.)

SECTION 40, PAGE 460



THE GORMAN-RUPP COMPANY • MANSFIELD, OHIO

GORMAN-RUPP OF CANADA LIMITED • ST. THOMAS, ONTARIO, CANADA

Specifications Subject to Change Without Notice

Printed in U.S.A.