

Basic Pump



Self Priming Centrifugal Pump

Model RS2A31-BAR and RS2A32-BAR

Size 3" x 2"

PUMP SPECIFICATIONS

Size: 3" x 2" (76 x 51 mm) Flanged.

Casing: (RS2A31-BAR) Ductile Iron 65-45-12.
(RS2A32-BAR) Cast Steel 70-36.

Maximum Operating Pressure 48 psi (331 kPa).*

Enclosed Type, Four Vane Impeller: Aluminum 356-T6.

Handles 1/4" (6,4 mm) Diameter Spherical Solids.

Impeller Shaft: Steel 1045.

Rotor: Copper Alloy C93200.

Bearing Housing: Ductile Iron 65-45-12.

Bearing Housing Lubrication: Grease.

Body Cover: (RS2A31-BAR) Ductile Iron 65-45-12.
(RS2A32-BAR) Cast Steel 70-36.

Center/Spacer Plate: (RS2A31-BAR) Ductile Iron 65-45-12.
(RS2A32-BAR) Cast Steel 70-36.

Suction Spool Flange: Cast Steel 70-36.

Radial Bearing: Permanently Sealed Single Row Ball Type.

Thrust Bearing: Permanently Sealed Single Row Ball Type.

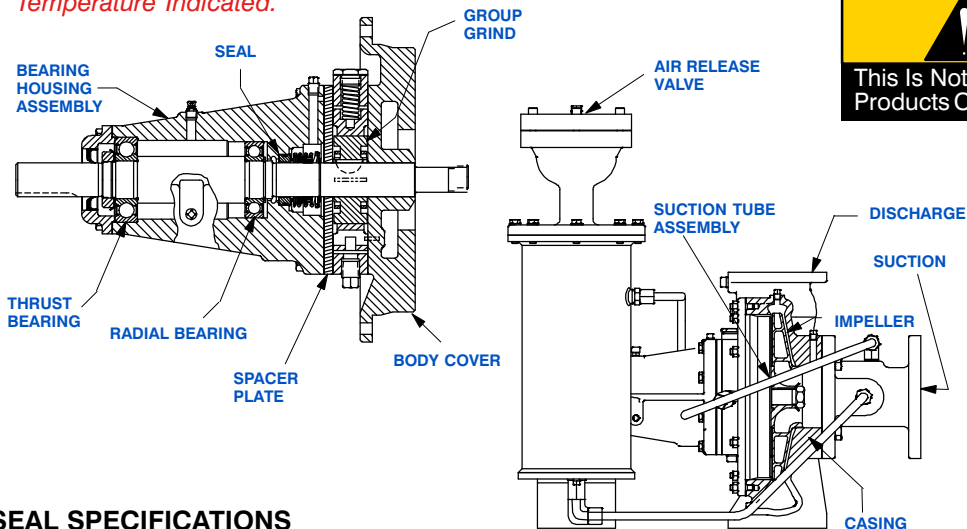
Gaskets: Buna-N and PTFE.

Priming: Rotary Vane Type Priming Pump.

Air Release Valve: (RS2A31-BAR) Ductile Iron/Stainless Steel.
(RS2A32-BAR) Steel/Stainless Steel.

Optional Equipment: Cast Steel 70-36 Threaded Suction and Discharge Companion Flange Kit, Copper Alloy C93700 Impeller, Group Grind with Cast Iron Rotor (RS2A31-BAR Only), Stainless Steel 416 Impeller Shaft, Buna-N Seal, PTFE Seal with Fluorocarbon O-Ring, PTFE Seal with Buna-N O-Ring, Oil Filled Bearing Housing Assembly.

*Consult Factory for Applications Exceeding Maximum Pressure and/or Temperature Indicated.



SEAL SPECIFICATIONS

Seal: Mechanical; Self-Lubricated. Fluorocarbon Elastomers (DuPont Viton® or Equivalent). Carbon Rotating Face; Ni-Resist Stationary Face; Maximum Temperature of Liquid Pumped is 160°F (71°C).*



GORMAN-RUPP PUMPS

www.grpumps.com

Specifications Subject to Change Without Notice

Printed in U.S.A.

Specification Data

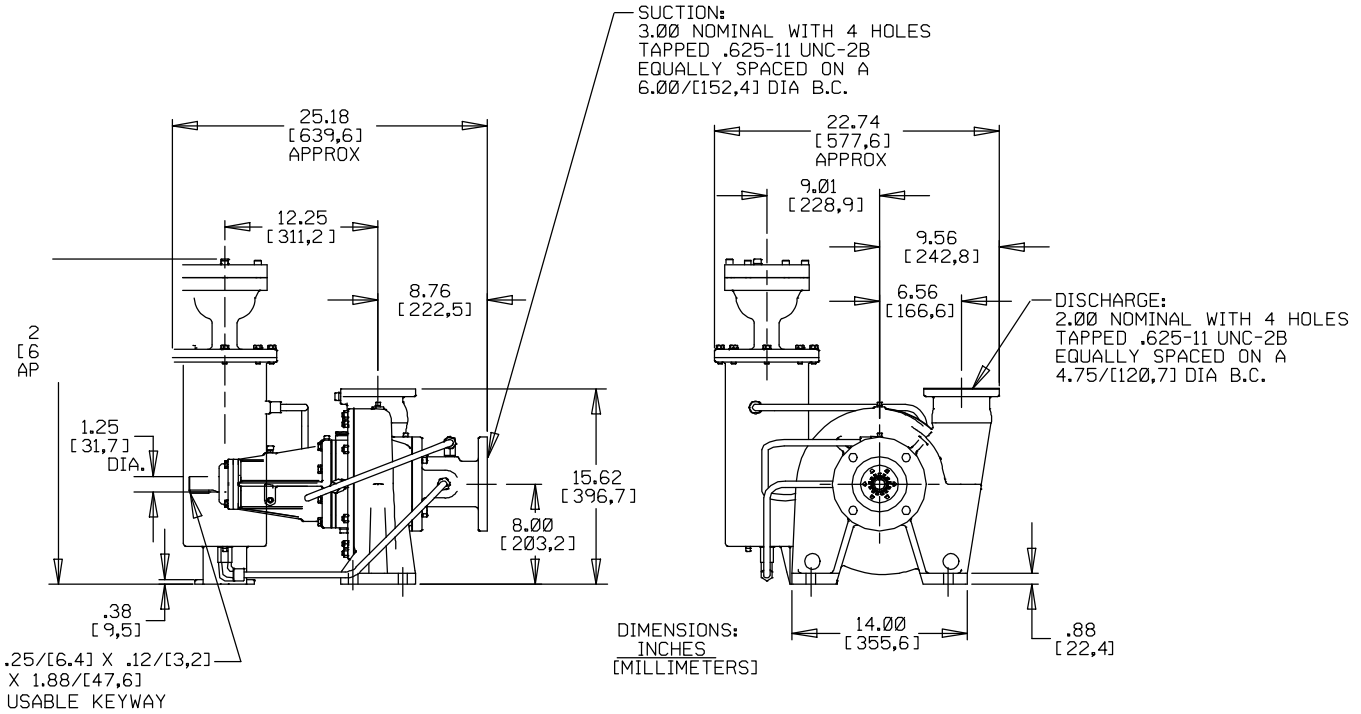
SECTION 35, PAGE 110

OVERALL DIMENSIONS
and
APPROXIMATE WEIGHTS

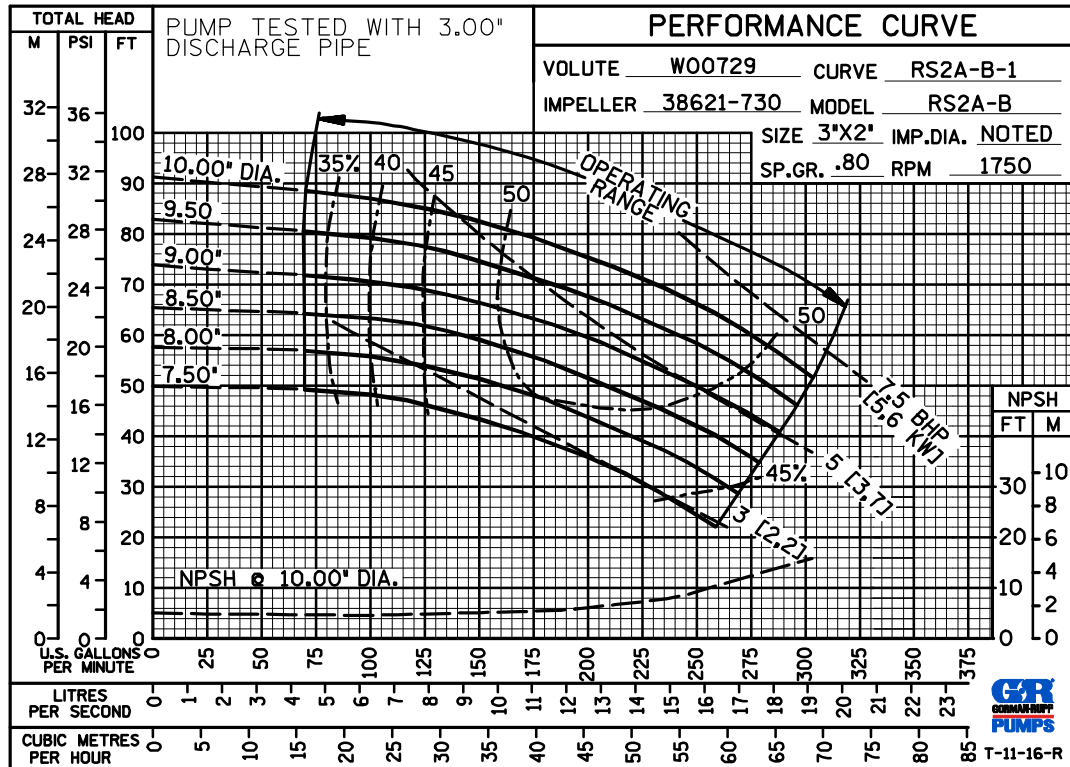
RS2A31-BAR

RS2A32-BAR

PUMP NET WEIGHT: 231 LBS. (104,8 KG.) 229 LBS. (103,9 KG.)
SHIPPING NET WEIGHT: 246 LBS. (111,6 KG.) 239 LBS. (108,4 KG.)
EXPORT CRATE SIZE: 18 CU. FT. (0,5 CU. M.)



PERFORMANCE
BASED ON
PETROLEUM
TRIMMED
IMPELLER



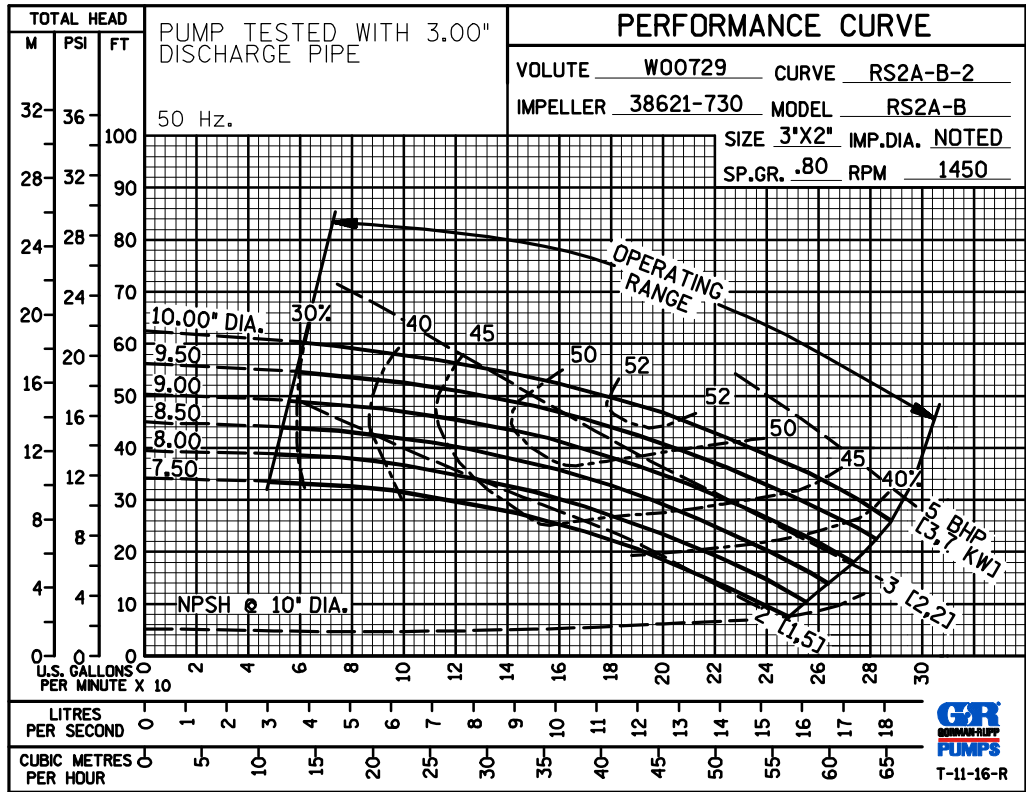
GORMAN-RUPP PUMPS

www.grpumps.com

Specifications Subject to Change Without Notice

Printed in U.S.A.

**50 HERTZ
PERFORMANCE
BASED ON-
PETROLEM
TRIMMED
IMPELLER**



GORMAN-RUPP PUMPS

www.grpumps.com

Specifications Subject to Change Without Notice

Printed in U.S.A.