

A C E



Self Priming Centrifugal Pump

Basic Pedestal

Model 04A20-B

Size 4" x 4"

PUMP SPECIFICATIONS

Size: 4" x 4" (102 mm x 102 mm) NPT. (Female).

Pump Casing: Gray Iron No. 30. Maximum Operating Pressure 235 psi (16,5 kg/cm²).

Enclosed Type, Six Vane Impeller: Gray Iron No. 30. Handles 9/16" (14,2 mm) Diameter Spherical Solids.

Impeller Shaft: Carbon Steel Grade 1045.

Replaceable Wear Rings: Gray Iron No. 30.

Removable Cleanout Cover: Gray Iron No. 30. Weight 2 lbs. (0,9 kg.).

Pedestal: Gray Iron No. 30.

Seal Plate: Gray Iron No. 30.

Radial Bearing: Open Single Row Ball.

Thrust Bearing: Open Double Row Ball.

Bearing Lubrication: Oil.

Flanges: Ductile Iron No. 60-40-18.

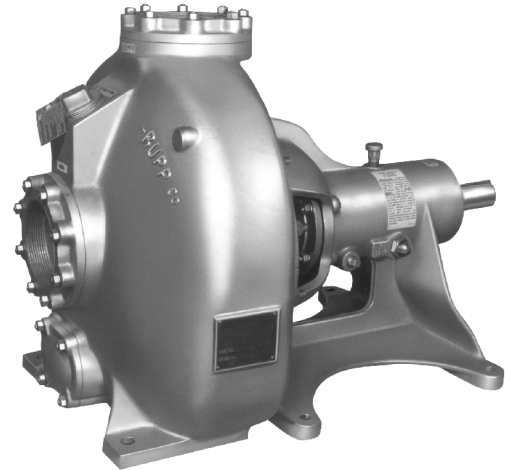
Gaskets: Resistant Synthetic Rubber and Cork.

Hardware: Standard Plated Steel.

Oil Level Sight Gauge.

Optional Equipment

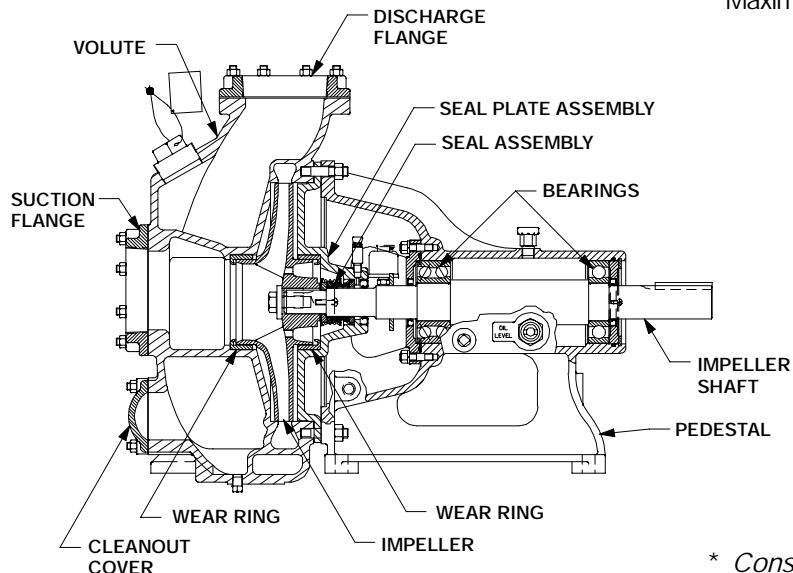
Strainer: Part No. S2003



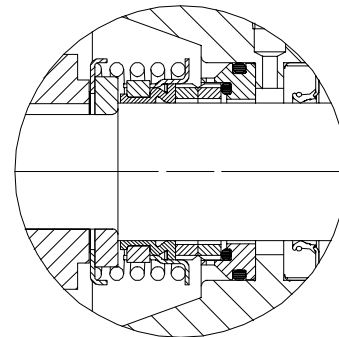
SEAL SPECIFICATIONS

Mechanical, Oil-Lubricated, Self-Aligning. Tungsten Titanium Carbide Rotating and Stationary Faces. Stainless Steel Type 316 Stationary Seat. Fluorocarbon Elastomers (DuPont Viton® or Equivalent). Stainless Steel Type 18-8 Cage and Spring.

Maximum Temperature of Liquid Pumped, 160°F (71°C).*



SEAL DETAIL



* Consult Factory for Applications Exceeding Maximum Pressure and/or Temperature Indicated.



THE GORMAN-RUPP COMPANY • MANSFIELD, OHIO

GORMAN-RUPP OF CANADA LIMITED • ST. THOMAS, ONTARIO, CANADA

Specifications Subject to Change Without Notice

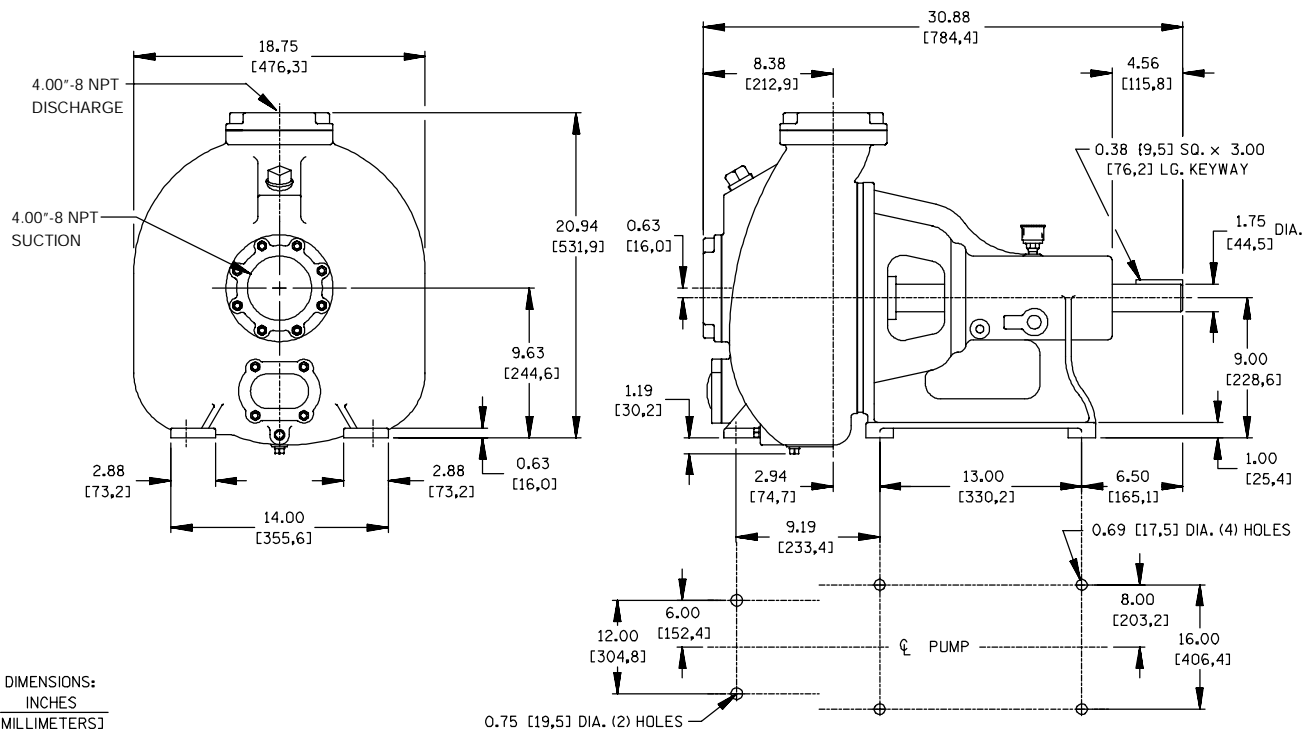
Printed in U.S.A.

Specification Data

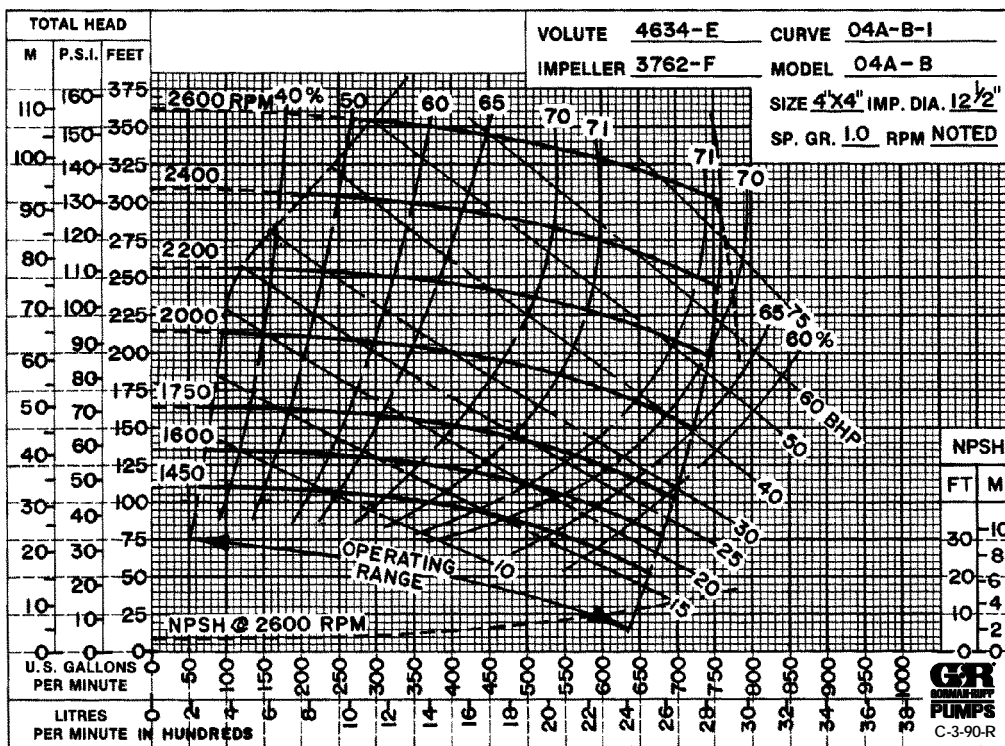
APPROXIMATE DIMENSIONS and WEIGHTS

NET WEIGHT: 382 LBS. (173 KG.)
 SHIPPING WEIGHT: 392 LBS. (178 KG.)
 EXPORT CRATE: 12.2 CU. FT. (0,34 CU. M.)

SECTION 30, PAGE 1698



DIMENSIONS:
 INCHES
 [MILLIMETERS]



THE GORMAN-RUPP COMPANY • MANSFIELD, OHIO

GORMAN-RUPP OF CANADA LIMITED • ST. THOMAS, ONTARIO, CANADA

Specifications Subject to Change Without Notice

Printed in U.S.A.