



Self Priming Centrifugal Pump

Basic Pedestal

Model 03A20-B

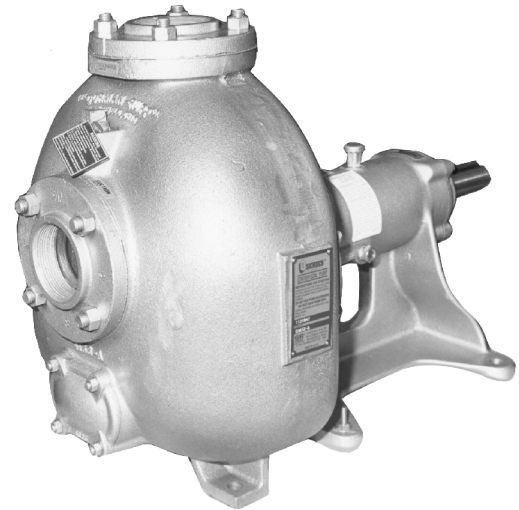
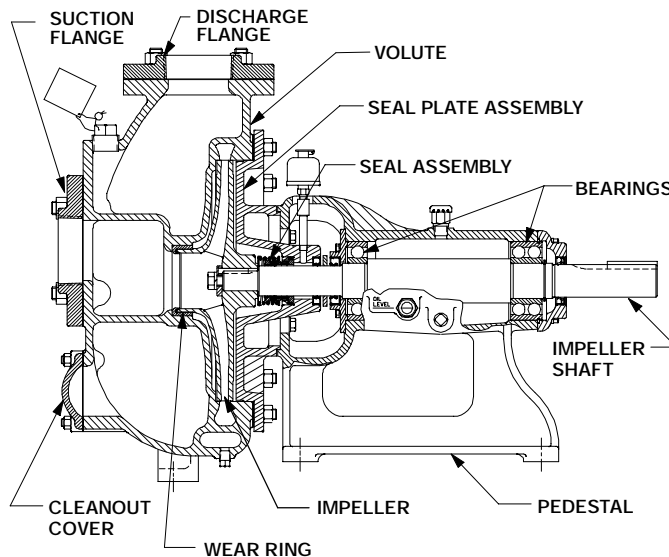
Size 3" x 3"

PUMP SPECIFICATIONS

Size: 3" x 3" (76 mm x 76 mm) NPT. (Female)
Pump Casing: Gray Iron No. 30.
 Maximum Operating Pressure 205 psi (14,4 kg/cm²).*
Enclosed Type, Six Vane Impeller: Gray Iron No. 30.
 Handles 3/8" (9,5 mm) Diameter Spherical Solids.
Impeller Shaft: Carbon Steel Grade 1045.
Replaceable Wear Ring: Gray Iron No. 30.
Removable Cleanout Cover: Gray Iron No. 30.
 Weight 2 lbs. (0,9 kg.).
Pedestal: Gray Iron No. 30.
Seal Plate: Gray Iron No. 30.
Radial Bearing: Open Single Ball.
Thrust Bearing: Open Double Ball.
Bearing Lubrication: Oil.
Flanges: Gray Iron No. 30.
Gaskets: Cork with Nitrile Binder (NC710).
Hardware: Standard Plated Steel.
Oil Level Sight Gauge.

Optional Equipment

All Iron Construction.
 Strainer: Part No. 26841-026

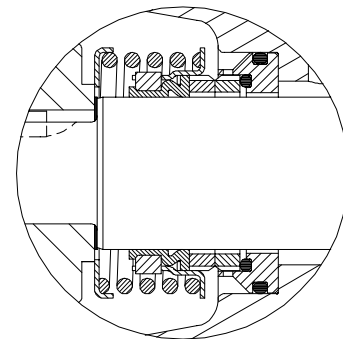


SEAL SPECIFICATIONS

Mechanical, Oil-Lubricated, Self-Aligning.
 Tungsten Titanium Carbide Rotating and Stationary Faces. Stainless Steel No. 316 Stationary Seat. Fluorocarbon Elastomers (DuPont Viton® or Equivalent). Stainless Steel Type 18-8 Cage and Spring.

Maximum Temperature of Liquid Pumped. 160°F (71°C).*

SEAL DETAIL



* Consult Factory for Applications Exceeding Maximum Pressure and/or Temperature Indicated.



THE GORMAN-RUPP COMPANY • MANSFIELD, OHIO

GORMAN-RUPP OF CANADA LIMITED • ST. THOMAS, ONTARIO, CANADA

Specifications Subject to Change Without Notice

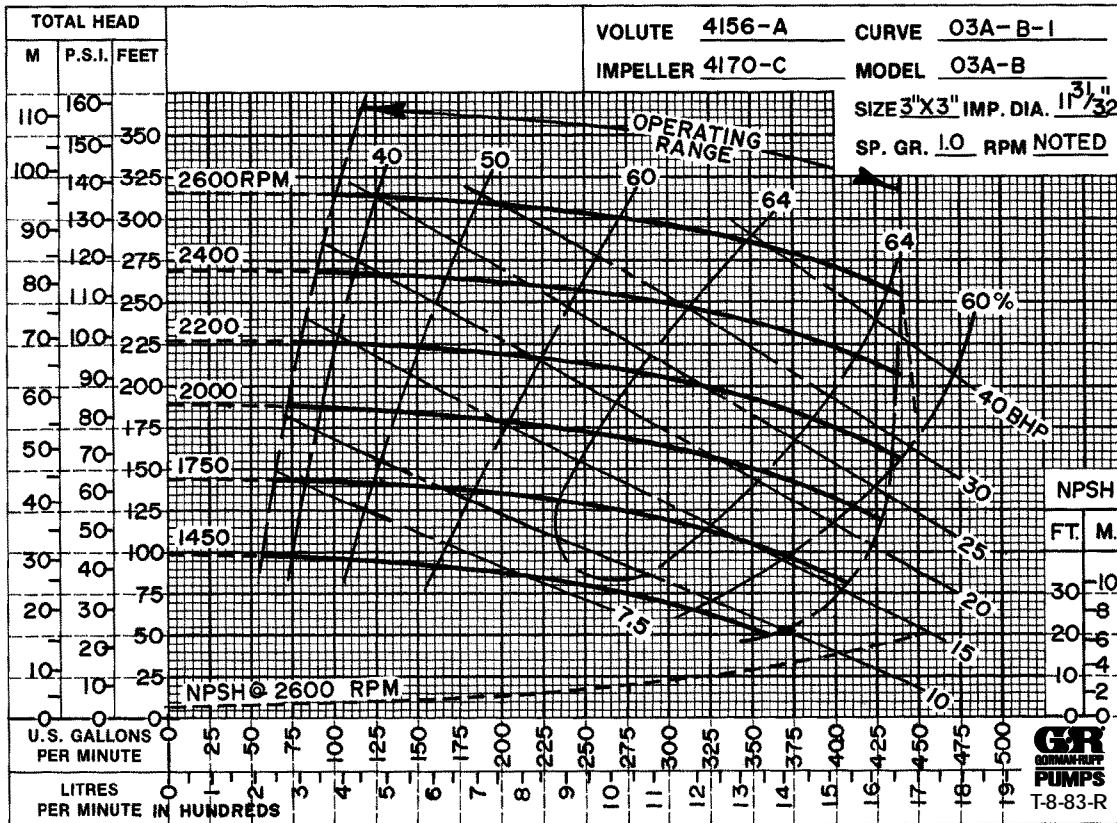
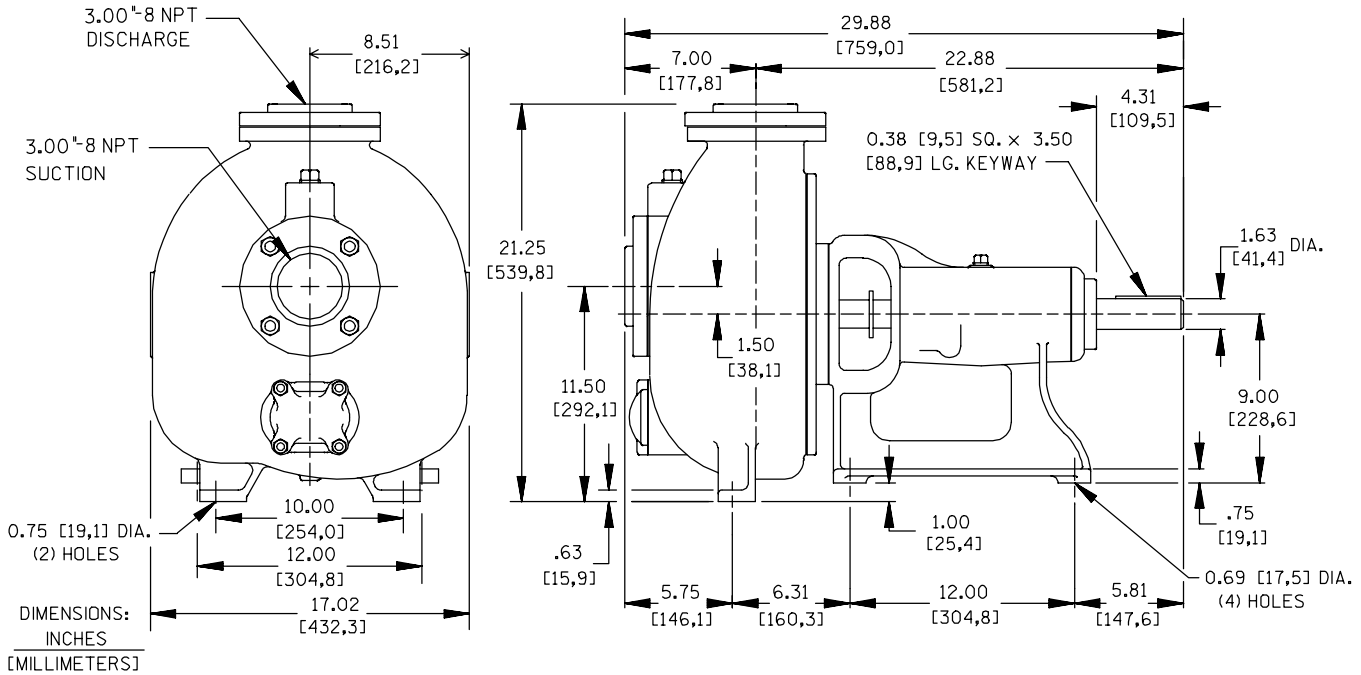
Printed in U.S.A.

Specification Data

APPROXIMATE
DIMENSIONS and WEIGHTS

NET WEIGHT: 292 LBS. (132 KGS.)
SHIPPING WEIGHT: 321 LBS. (146 KGS.)
EXPORT CRATE: 12.2 CU. FT. (0.35 CU. M.)

SECTION 30, PAGE 1598



THE GORMAN-RUPP COMPANY • MANSFIELD, OHIO

GORMAN-RUPP OF CANADA LIMITED • ST. THOMAS, ONTARIO, CANADA

Specifications Subject to Change Without Notice

Printed in U.S.A.