



Self Priming Centrifugal Pump

Model 03F3-B

Size 3" x 3"

PUMP SPECIFICATIONS

Size: 3" x 3" (76 mm x 76 mm) NPT - Female.

Casing: Gray Iron 30.

Maximum Operating Pressure 75 psi (517 kPa).*

Enclosed Type, Six Vane Impeller: Copper Alloy C83600.

Handles 5/8" (15,9 mm) Diameter Spherical Solids.

Impeller Shaft: Alloy Steel 4150.

Replaceable Wear Ring: Gray Iron 30.

Pedestal: Ductile Iron 65-45-12.

Seal Plate: Gray Iron 30.

Shaft Sleeve: Alloy Steel 4130.

Radial Bearing: Open Single Row Ball.

Thrust Bearing: Open Double Row Ball.

Bearing Lubrication: Grease.

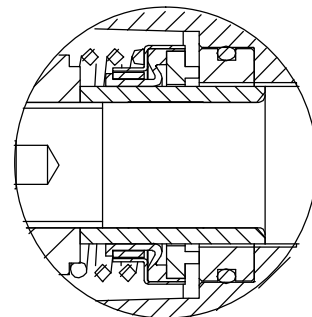
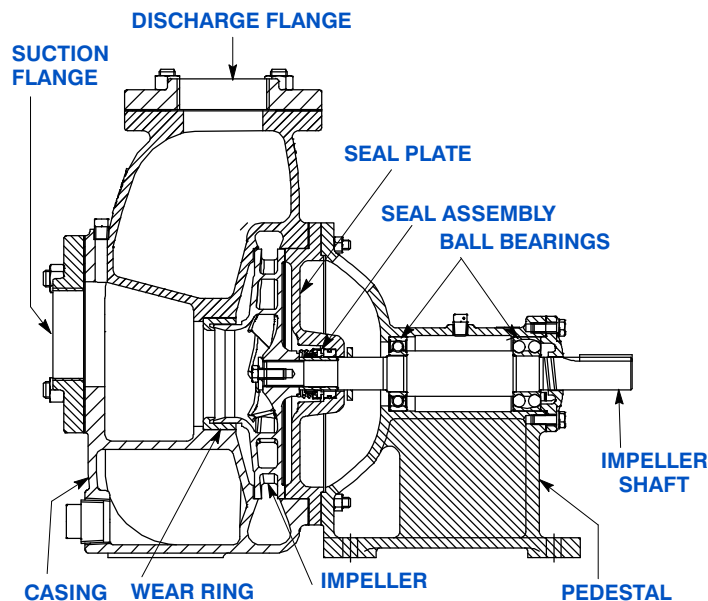
Flanges: Gray Iron 30.

Gaskets: Composition Cork and Buna-N.

Hardware: Standard Plated Steel.

Optional Equipment: All Iron Construction. Fluorocarbon Gaskets (DuPont Viton® or Equivalent). Spool Flanges.

**Consult Factory for Applications Exceeding Maximum Pressure and/or Temperature Indicated.*



SEAL DETAIL:

Type 21, Mechanical Self-Lubricated. Carbon Rotating Face. Ni-Resist Stationary Face. Fluorocarbon Elastomers (DuPont Viton® or Equivalent). Stainless Steel 18-8 Cage and Spring. Maximum Temperature of Liquid Pumped, 160°F (71°C).*



GORMAN-RUPP PUMPS

www.grpumps.com

Specifications Subject to Change Without Notice

Printed in U.S.A.

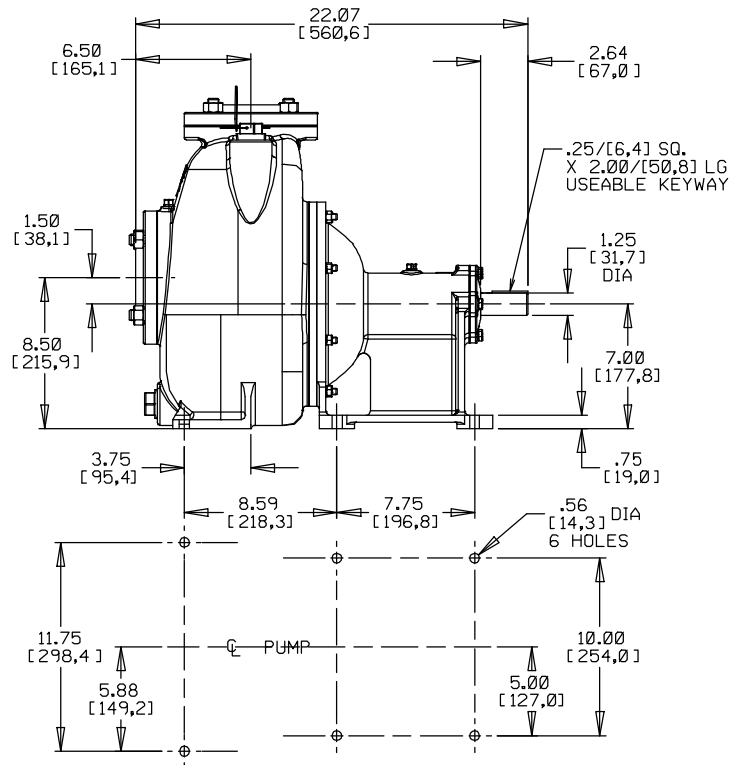
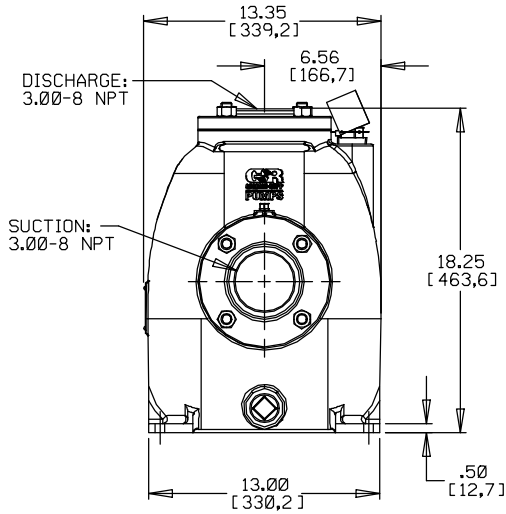
Specification Data

APPROXIMATE
DIMENSIONS and WEIGHTS

NET WEIGHT:
SHIPPING WEIGHTS:
EXPORT CRATE:

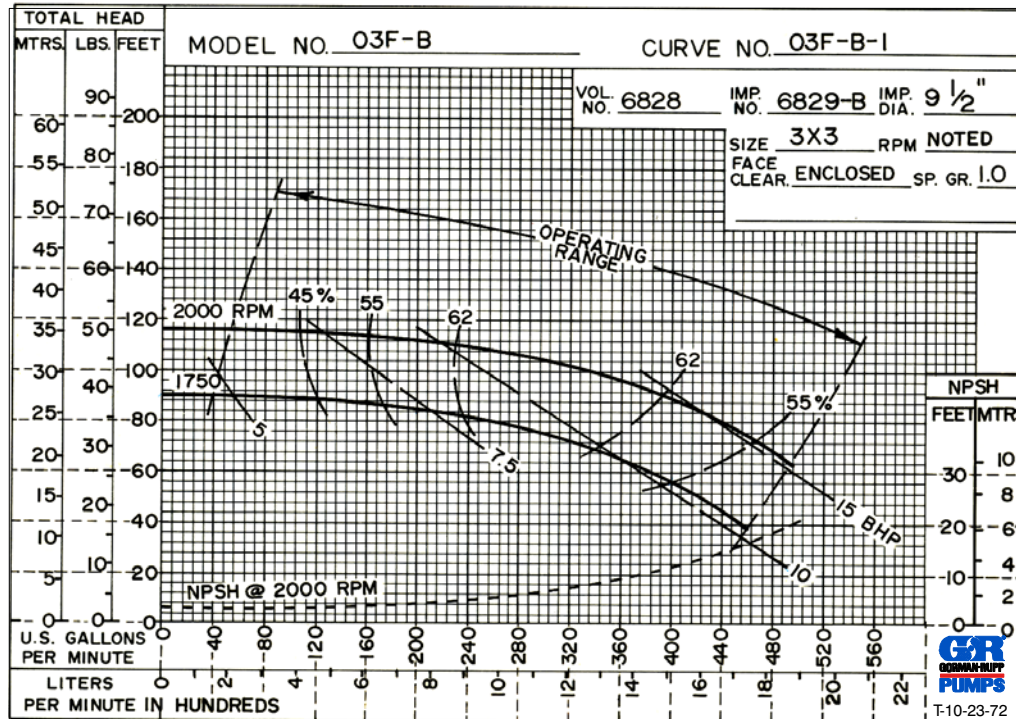
199 LBS (90,2 KGS.)
209 LBS (94,8 KGS.)
8.6 CU. FT. (0,24 CU. M.)

SECTION 30, PAGE 1500



DIMENSIONS:
INCHES
[MILLIMETERS]

**MULTI-SPEED
CURVE
PERFORMANCE
BASED ON
WATER**



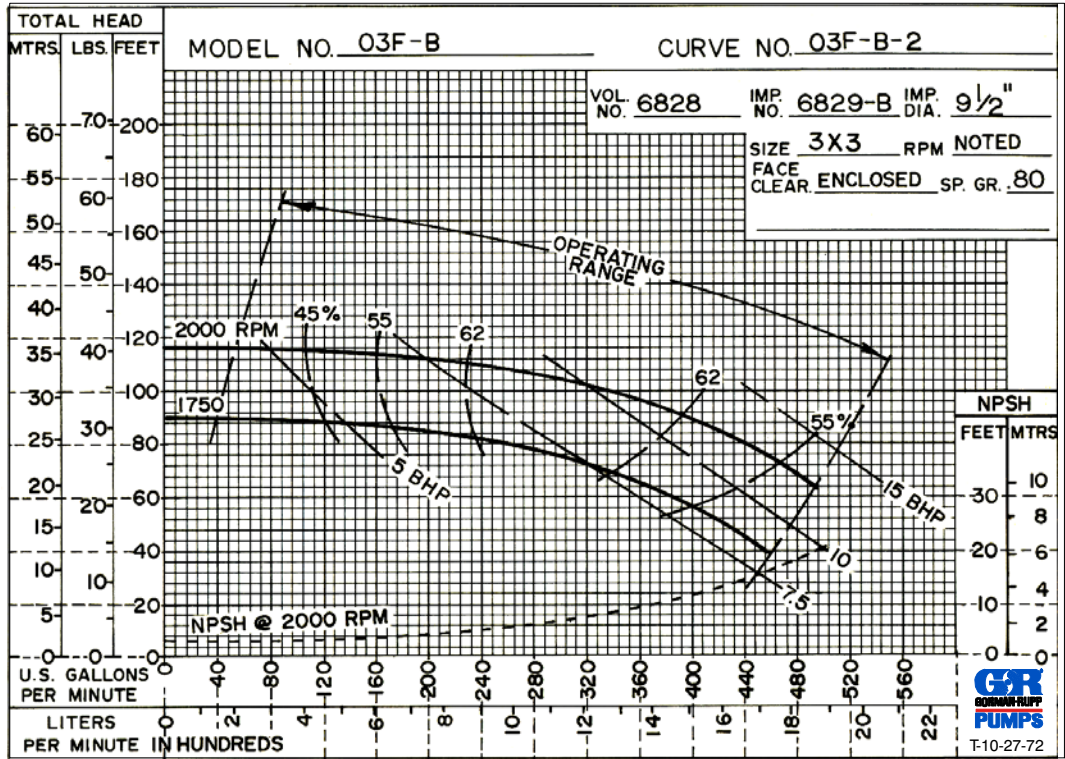
GORMAN-RUPP PUMPS

www.grpumps.com

Specifications Subject to Change Without Notice

Printed in U.S.A.

**MULTI-SPEED
CURVE
PERFORMANCE
BASED ON
PETROLEUM**



GORMAN-RUPP PUMPS

www.grpumps.com

Specifications Subject to Change Without Notice

Printed in U.S.A.