

BCE



Self Priming Centrifugal Pump

Model 03E1-B

Size 3" x 3"

PUMP SPECIFICATIONS

Size: 3" x 3" (76 mm x 76 mm) NPT - Female

Casing: Aluminum Alloy 319.

Maximum Operating Pressure 164 psi (1131 kPa).*

Enclosed Type, Five Vane Impeller: Aluminum 319-T6.

Handles 5/8" (15,8 mm) Diameter Spherical Solids.

Impeller Shaft: Alloy Steel 4150M.

Replaceable Wear Ring: Gray Iron 30.

Pedestal: Gray Iron 30

Seal Plate: Aluminum 319-T6.

Shaft Sleeve: Alloy Steel 4130.

Radial and Thrust Bearings: Open Single Row Ball.

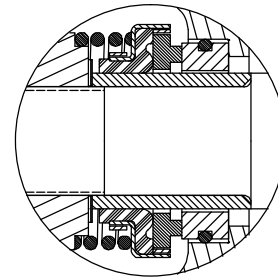
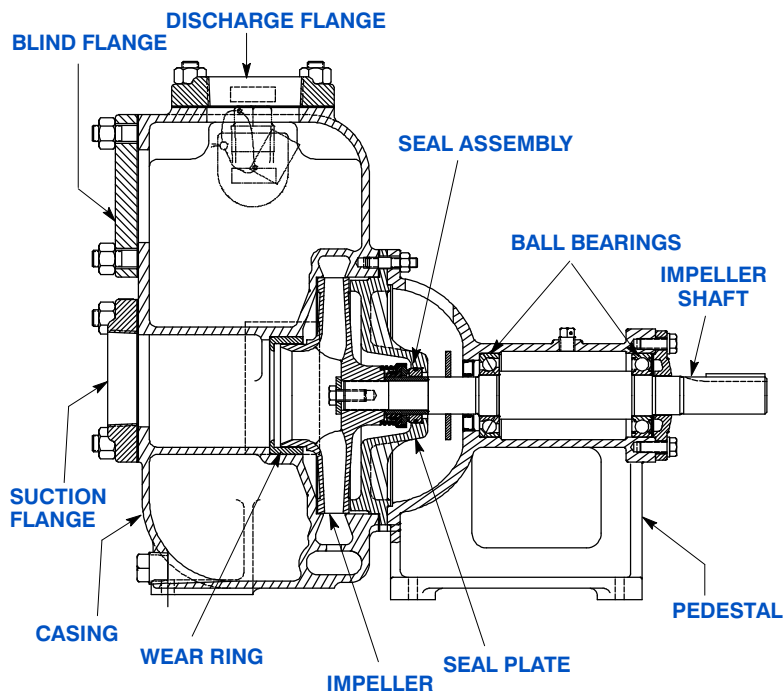
Bearing Lubrication: Grease.

Flanges: Aluminum 356-T6.

Gaskets: Composition Cork.

Hardware: Standard Plated Steel.

**Consult Factory for Applications Exceeding Maximum Pressure and/or Temperature Indicated.*



SEAL SPECIFICATION

Type 2 Mechanical, Self-Lubricated. Carbon Rotating Face. Ni-Resist Stationary Face. Fluorocarbon Elastomers (DuPont Viton® or Equivalent). Stainless Steel 18-8 Cage and Spring. Maximum Temperature of Liquid Pumped, 160°F (71°C).*



THE GORMAN-RUPP COMPANY • MANSFIELD, OHIO

GORMAN-RUPP OF CANADA LIMITED • ST. THOMAS, ONTARIO, CANADA

www.grpumps.com

Specifications Subject to Change Without Notice

Printed in U.S.A.

Specification Data

SECTION 30, PAGE 1400

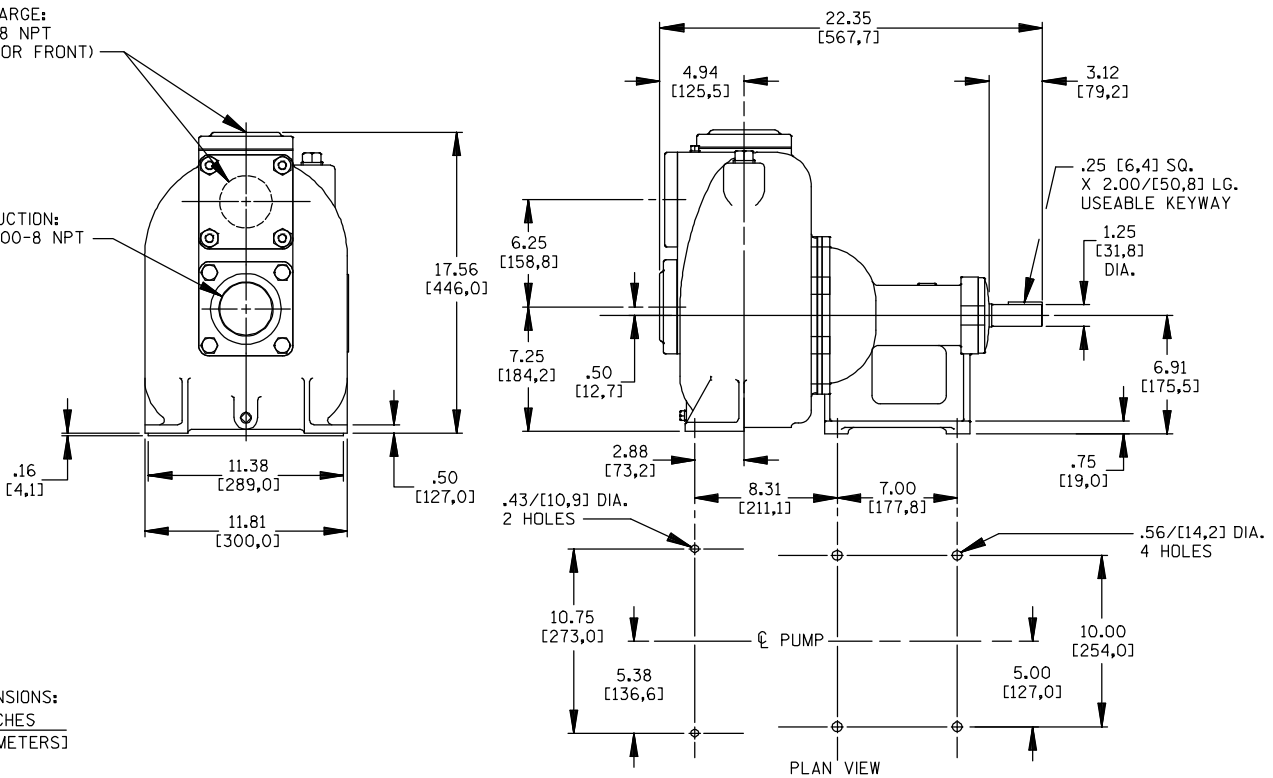
APPROXIMATE
DIMENSIONS and WEIGHTS

NET WEIGHT:
SHIPPING WEIGHT:
EXPORT CRATE:

90 LBS. (40,8 KG.)
101 LBS. (45,8 KG.)
6.9 CU. FT. (0,20 CU. M.)

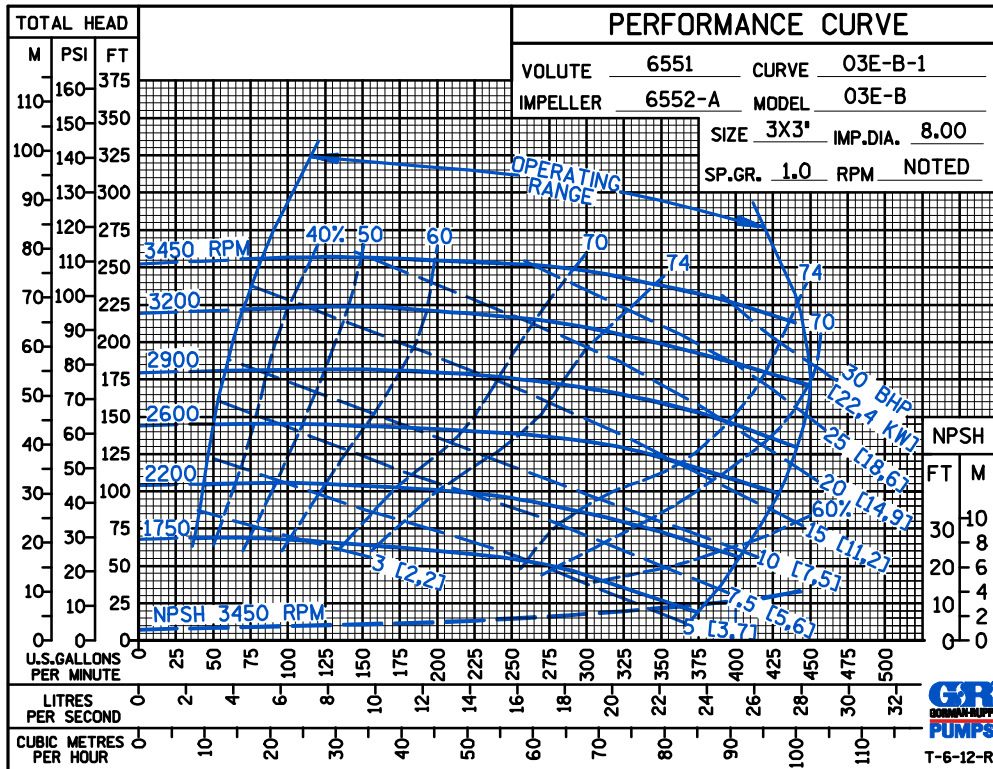
DISCHARGE:
3.00-8 NPT
(TOP OR FRONT)

SUCTION:
3.00-8 NPT



DIMENSIONS:
INCHES
[MILLIMETERS]

PERFORMANCE
BASED ON
WATER



THE GORMAN-RUPP COMPANY • MANSFIELD, OHIO

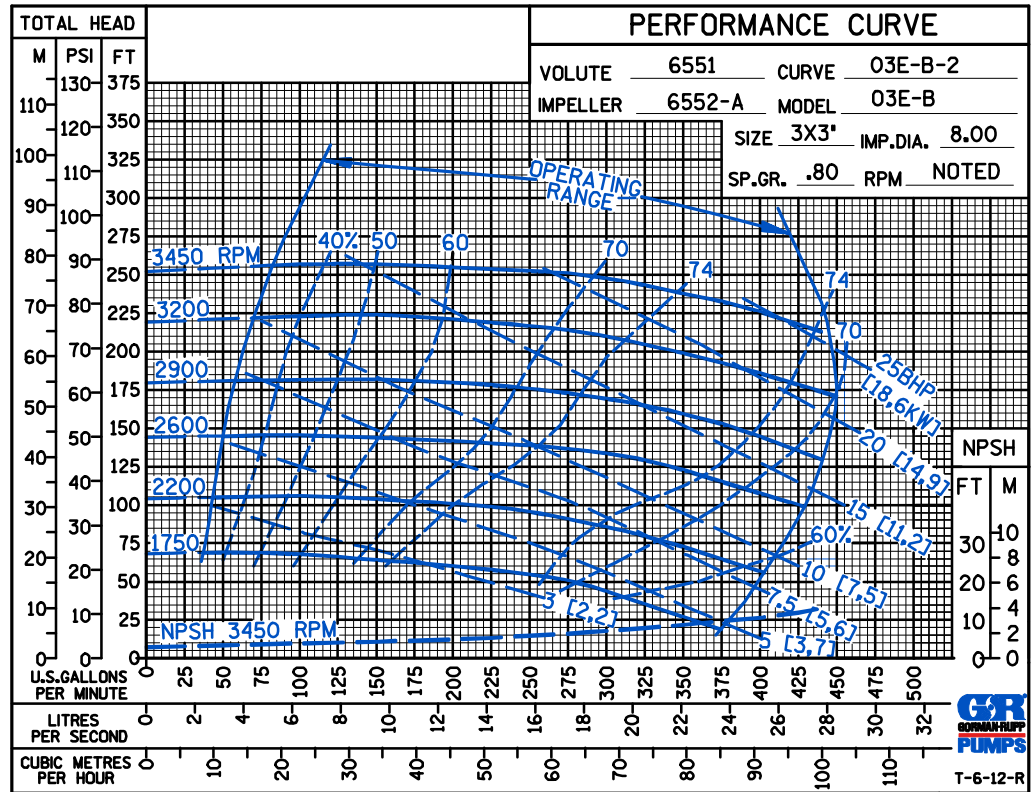
GORMAN-RUPP OF CANADA LIMITED • ST. THOMAS, ONTARIO, CANADA

Specifications Subject to Change Without Notice

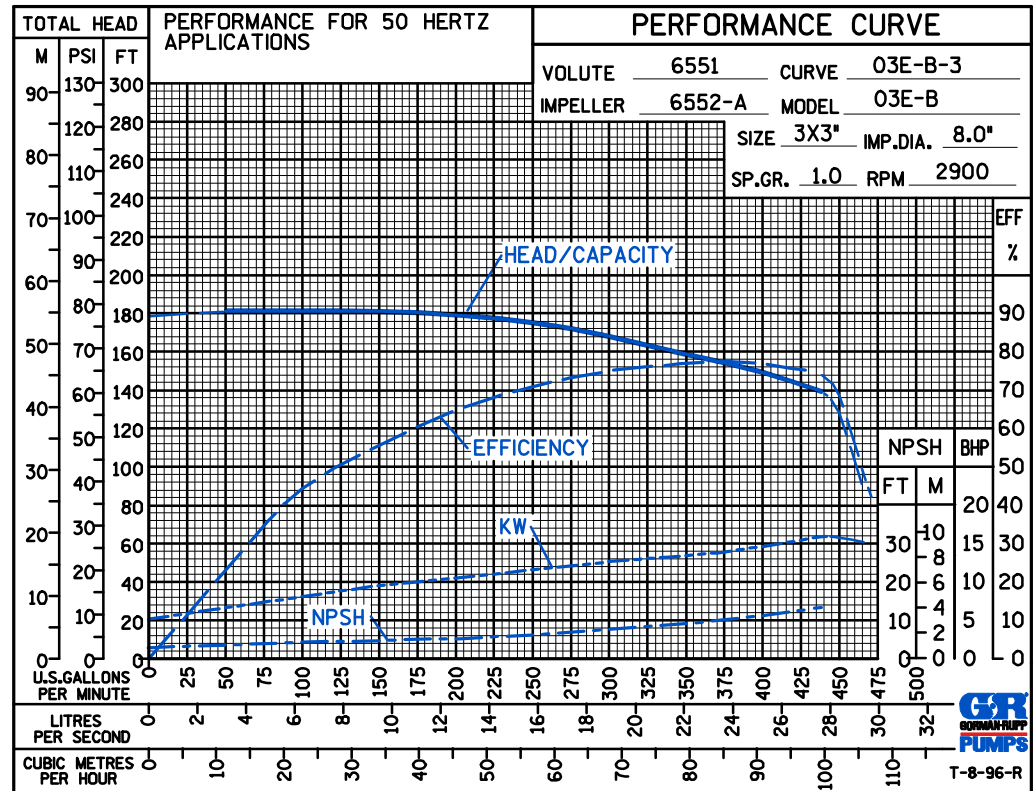
Printed in U.S.A.

BCE

PERFORMANCE
BASED ON
PETROLEUM



50 HERTZ
PERFORMANCE
BASED ON
WATER



THE GORMAN-RUPP COMPANY • MANSFIELD, OHIO

GORMAN-RUPP OF CANADA LIMITED • ST. THOMAS, ONTARIO, CANADA

Specifications Subject to Change Without Notice

Printed in U.S.A.