



# Self Priming Centrifugal Pump

## Models 03C11-B and 03C31-B

### Size 3" x 3"

#### PUMP SPECIFICATIONS

**Size:** 3" x 3" (76 mm x 76 mm) NPT - Female.

**Casing:** Ductile Iron 60-40-18.

Maximum Operating Pressure 75 psi (517 kPa).\*

**Enclosed Type, Five Vane Impeller:** Brass 85-5-5-5.

Handles 7/16" (11,2 mm) Diameter Spherical Solids.

**Impeller Shaft:** (03C11-B) Stainless Steel 303/304.

(03C31-B) Carbon Steel 1045.

**Replaceable Vane Plate:** Gray Iron 30.

**Pedestal:** Gray Iron 30.

**Seal Plate:** Ductile Iron 60-40-18.

**Radial and Thrust Bearings:** Single Row Ball Type.

**Bearing Lubrication:** Grease.

**Flanges:** (03C11-B) Gray Iron 30.

(03C31-B) Ductile Iron 60-40-18.

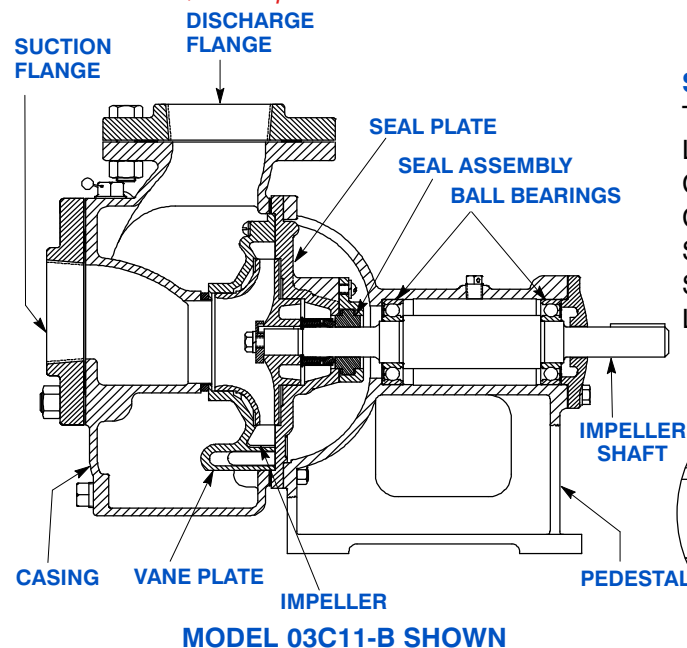
**Gaskets:** (03C11-B) PTFE.

(03C31-B) Cork <sup>w</sup>/Nitrile Binder NC710.

**Hardware:** Standard Plated Steel.

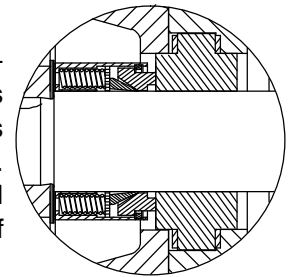
**Optional Equipment:** All Iron Construction.

*\*Consult Factory for Applications Exceeding Maximum Pressure and/or Temperature Indicated.*



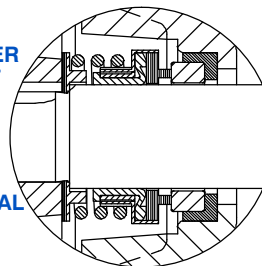
#### SEAL DETAIL 03C11-B:

Type 9, Mechanical Self-Lubricated. Rotating Face is Carbon. Stationary Face is Ceramic. PTFE Elastomers. Stainless Steel 316 Cage and Spring. Maximum Temperature of Liquid Pumped, 160°F (71°C).\*



#### SEAL DETAIL 03C31-B:

Type 21, Mechanical. Self-Lubricated. Carbon Rotating Face. Ni-Resist Stationary Face. Fluorocarbon Elastomers (DuPont Viton® or Equivalent). Stainless Steel 18-8 Cage and Spring. Maximum Temperature of Liquid Pumped, 160°F (71°C).\*



## GORMAN-RUPP PUMPS

www.grpumps.com

Specifications Subject to Change Without Notice

Printed in U.S.A.

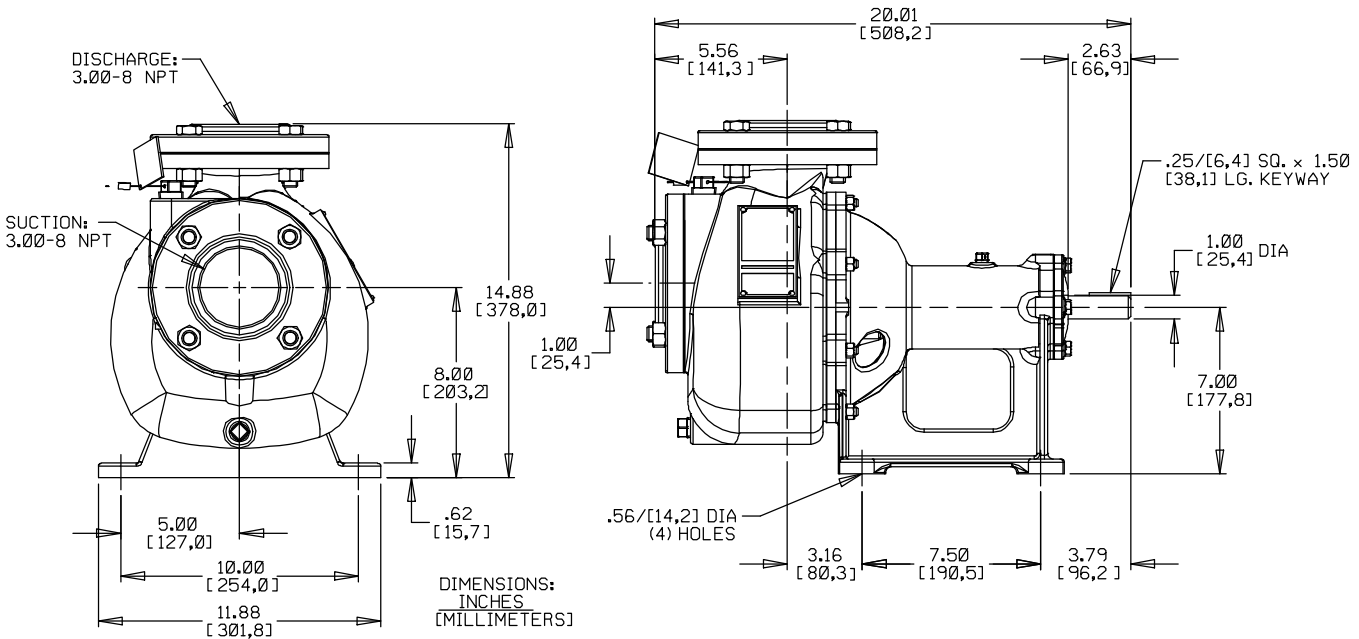
**Specification Data**

APPROXIMATE  
DIMENSIONS and WEIGHTS

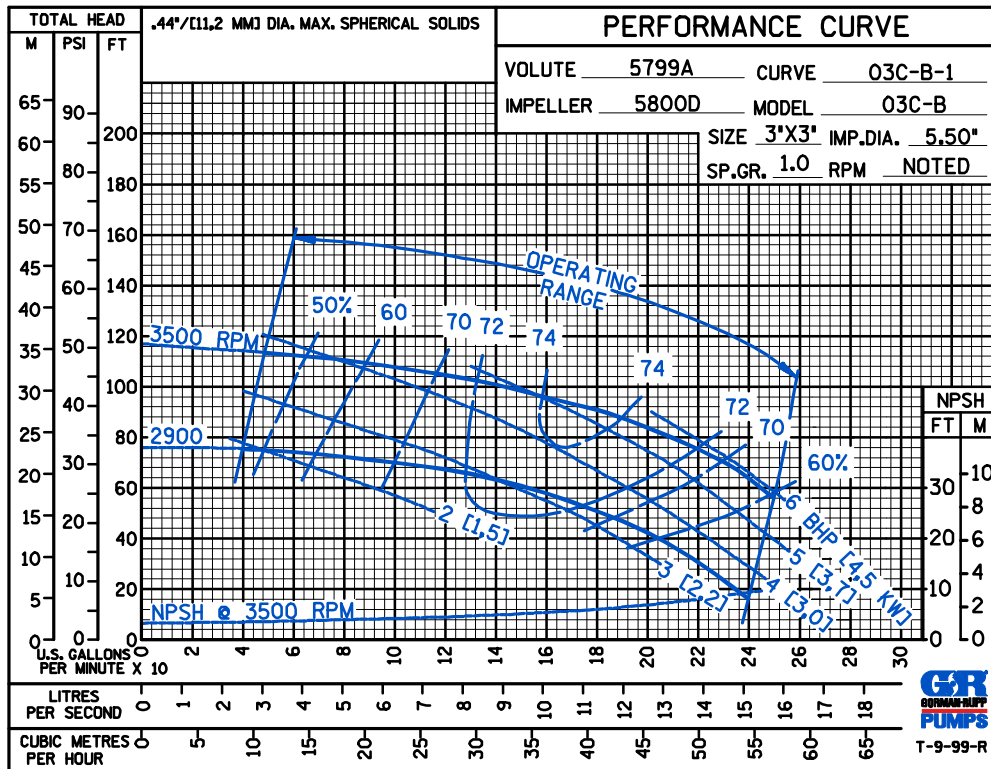
**NET WEIGHT:**  
**SHIPPING WEIGHT:**  
**EXPORT CRATE:**

**122 LBS. (55 KG.)**  
**132 LBS. (60 KG.)**  
**3.6 CU. FT. (0,1 CU. M.)**

SECTION 30, PAGE 1300



**MULTI-SPEED  
CURVE  
PERFORMANCE  
BASED ON  
WATER**



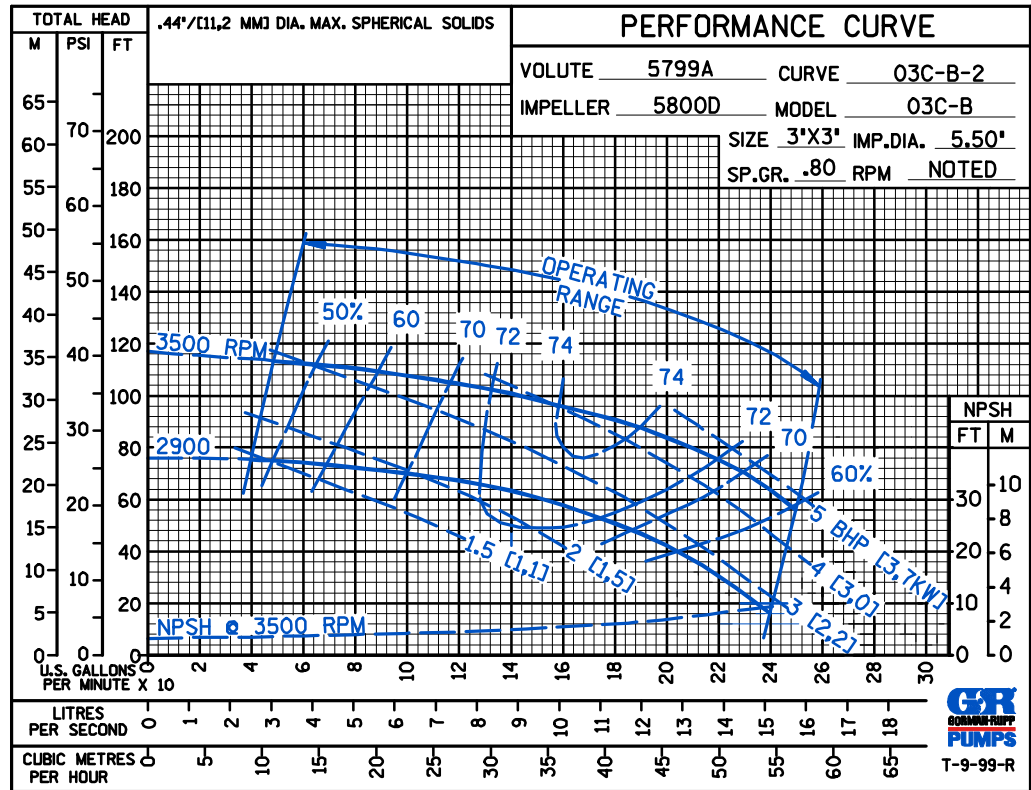
**GORMAN-RUPP PUMPS**

www.grpumps.com

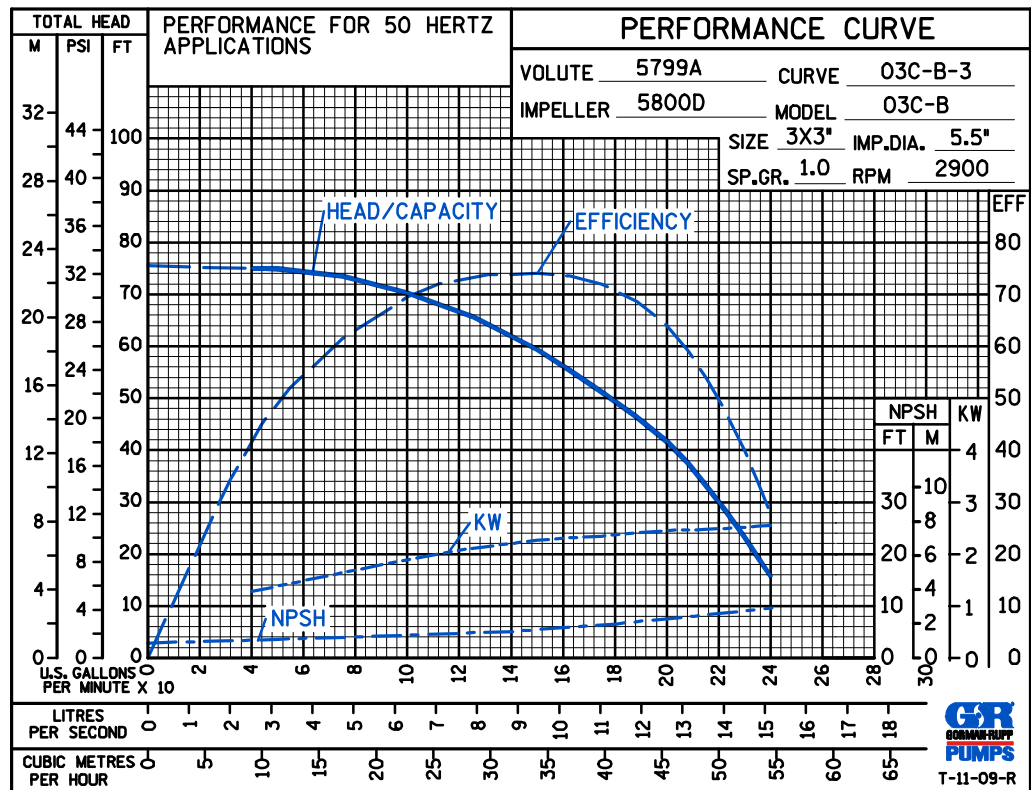
Specifications Subject to Change Without Notice

Printed in U.S.A.

**MULTI-SPEED  
CURVE  
PERFORMANCE  
BASED ON  
PETROLEUM**



**50 HERTZ  
PERFORMANCE  
BASED ON  
WATER**



**GORMAN-RUPP PUMPS**

www.grpumps.com

Specifications Subject to Change Without Notice

Printed in U.S.A.