

ACE

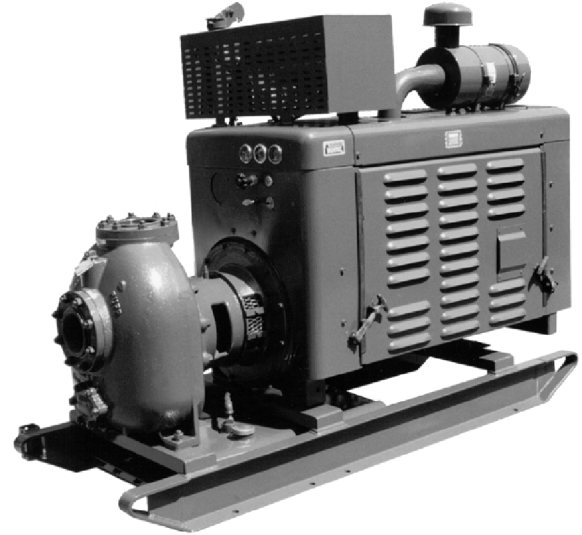
Self Priming Centrifugal Pump



Gasoline Engine Driven Model 04B3–F300

Size 4" x 4"

Total Head		Capacity Of Pump In U.S. Gallons Per Minute (GPM) At Continuous Performance				
P.S.I.	Feet					
173.4	400	290	290	290	290	290
151.7	350	325	460	520	520	520
130.1	300	340	480	600	670	690
108.4	250	350	490	610	705	775
86.7	200	355	495	615	710	800
65.0	150	360	500	620	720	810
Suction Lift		25'	20'	15'	10'	5'



PUMP SPECIFICATIONS

- Size:** 4" x 4" (102 mm x 102 mm) NPT, Female.
- Pump Casing:** Gray Iron No. 30. Maximum Operating Pressure 240 psi (1655 kPa).*
- Enclosed Type, Five Vane Impeller:** Copper Alloy C83600. Handles 1/2" (12,7 mm) Diameter Spherical Solids.
- Impeller Shaft:** Alloy Steel Type 4140.
- Replaceable Wear Rings:** Gray Iron No. 30. (Two).
- Removable Cleanout Cover:** Gray Iron No. 30. 3 lbs. (1,4 kg).
- Intermediate Bracket:** Gray Iron No. 30.
- Seal:** Type 2, Mechanical, Self-Lubricated. Carbon Rotating Face. Ni-Resist Stationary Face. Fluorocarbon Elastomers (DuPont Viton® or Equivalent). Stainless Steel No. 18-8 Cage and Spring. Maximum Temperature of Liquid Pumped, 160°F(71°C).*
- Shaft Sleeve:** Alloy Steel 4130.
- Thrust Bearing:** Double Row Ball Bearing.
- Bearing Lubrication:** Grease.
- Flanges:** Gray Iron No. 30.
- Gaskets:** Cork with Nitrile Binder (NC710).
- Hardware:** Standard Plated Steel.
- Skid Base.**
- Optional Equipment:** Battery. Two Wheel Truck Assembly with P235/75B15 Pneumatic Tires.

*Consult Factory for Applications Exceeding Maximum Pressure and/or Temperature Indicated.

WARNING!

Do not use in explosive atmosphere or for pumping volatile flammable liquids.

ENGINE SPECIFICATIONS

- Model:** C5PG, Ford F300.
- Type:** Six Cylinder, Four Cycle, Liquid Cooled Gasoline Engine.
- Displacement:** 300 Cu. In. (4,9 Liter).
- Governor:** Mechanical.
- Carburetor:** 1-Venturi Downdraft.
- Lubrication:** Rotor-Type Oil Pump Full Pressure.
- Air Cleaner:** Remote Dry Type.
- Oil Reservoir:** 7 U.S. Qts. (6,6 Liters).
- Fuel Tank:** 13.3 U.S. Gallons. (50,3 Liters).
- Full Load Operating Time:** 1.9 Hrs.
- Starter:** 12V Electric.

Standard Features: Hood and Side Panels. Low Oil Pressure and High Coolant Temperature Safety Shut Down Switches. Instrument Panel with: Water Temperature Gauge, Warning Lights for Generator and Oil Pressure. Muffler w/Guard and Weather Cap.

Optional Equipment: Hourmeter and Tachometer.

FORD PUBLISHED PERFORMANCE:
Maximum Continuous BHP 101 @ 2800 RPM
Maximum Dynamic BHP 124 @ 3600 RPM



THE GORMAN-RUPP COMPANY • MANSFIELD, OHIO

GORMAN-RUPP OF CANADA LIMITED • ST. THOMAS, ONTARIO, CANADA

Specifications Subject to Change Without Notice

Printed in U.S.A.

Specification Data

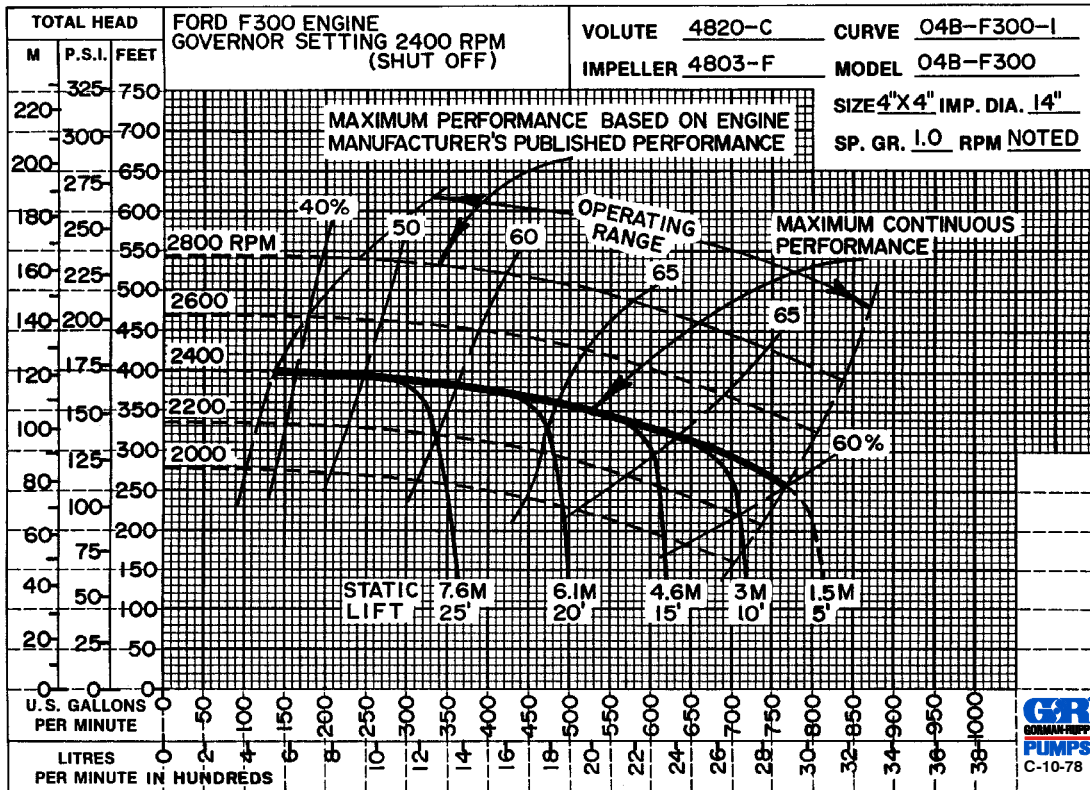
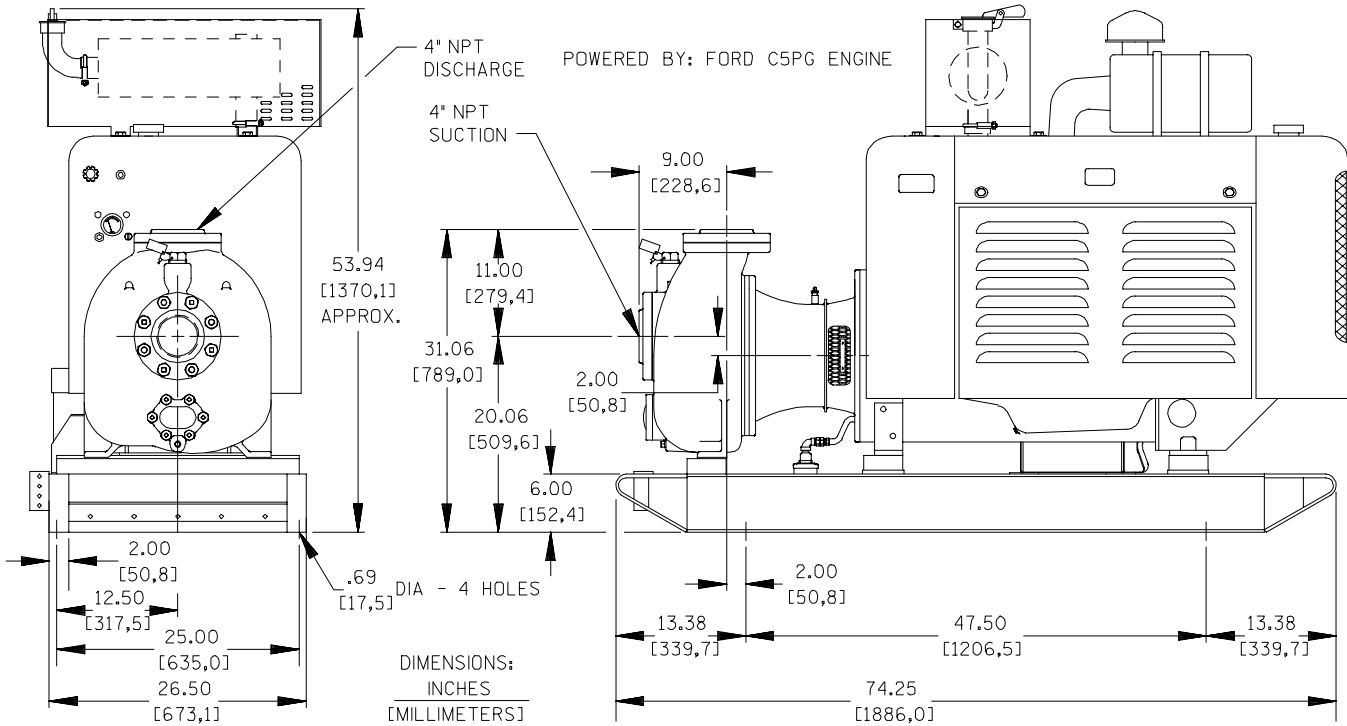
SECTION 20, PAGE 800

APPROXIMATE
DIMENSIONS and
WEIGHTS

SKID BASE

2-WHEEL

NET WEIGHT: 1486 LBS. (674 KG.) 1780 LBS. (807 KG.)
SHIPPING WEIGHT: 1550 LBS. (703 KG.) 1780 LBS. (807 KG.)
EXPORT CRATE: 80 CU. FT. (2,3 CU. M.) 97 CU. FT. (2,8 CU. M.)



THE GORMAN-RUPP COMPANY • MANSFIELD, OHIO

GORMAN-RUPP OF CANADA LIMITED • ST. THOMAS, ONTARIO, CANADA

Specifications Subject to Change Without Notice

Printed in U.S.A.