

A C E

Self Priming Centrifugal Pump

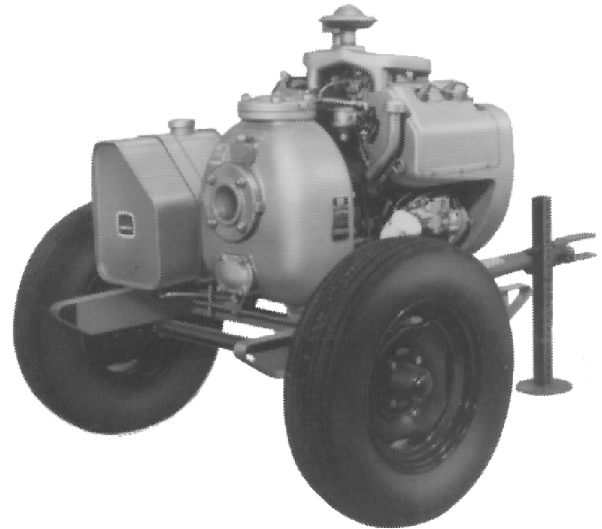


Gasoline Engine Driven

Model 03A3–VH4D S/G

Size 3" x 3"

Total Head		Capacity Of Pump In U.S. Gallons Per Minute (GPM) At Continuous Performance				
P.S.I.	Feet					
130.1	300	100	100	100	100	100
119.2	275	150	150	150	150	150
108.4	250	190	190	190	190	190
97.5	225	200	220	220	220	220
86.7	200	202	255	255	255	255
75.9	175	204	278	290	290	290
65.0	150	205	280	325	325	325
54.2	125	205	280	350	360	360
43.4	100	205	280	350	400	400
Suction Lift		25'	20'	15'	10'	5'



SHOWN WITH OPTIONAL WHEEL KIT

PUMP SPECIFICATIONS

- Size:** 3" x 3" (76 mm x 76 mm) NPT, Female.
- Pump Casing:** Gray Iron No. 30. Maximum Operating Pressure 205 psi (1414 kPa).*
- Enclosed Type, Six Vane Impeller:** Copper Alloy Type C83600. Handles 3/8" (9,5 mm) Diameter Spherical Solids.
- Replaceable Wear Ring:** Copper Alloy Type C83600.
- Removable Cleanout Cover:** Gray Iron No. 30. 2 lbs. (0,9 kg).
- Intermediate Bracket:** Gray Iron No. 30.
- Seal:** Type 2, Mechanical, Self-Lubricated. Carbon Rotating Face. Ni-Resist Stationary Face. Fluorocarbon Elastomers (DuPont Viton® or Equivalent). Stainless Steel No. 18-8 Cage and Spring. Maximum Temperature of Liquid Pumped, 160°F (71°C).*
- Shaft Sleeve:** Alloy Steel Type 4130.
- Flanges:** Gray Iron No. 30.
- Gaskets:** Cork with Nitrile Binder (NC710).
- Hardware:** Standard Plated Steel.
- Skid Base.**

Optional Equipment: Battery. Two Wheel Truck Assembly With P235/75R15 Pneumatic Tires.

* Consult Factory for Applications Exceeding Maximum Pressure and/or Temperature Indicated.

WARNING!

Do not use in explosive atmosphere or for pumping volatile flammable liquids.

ENGINE SPECIFICATIONS

- Model:** Wisconsin VH4D S/G.
- Type:** Four Cylinder, Four Cycle, V Block Air Cooled, Gasoline Engine.
- Displacement:** 107.7 Cu. In. (1,8 Liters).
- Governor:** Built-In Centrifugal Flyweight Type.
- Carburetor:** 1-Venturi Up-Draft Type.
- Lubrication:** Gear Pump, Pressure System.
- Air Cleaner:** Oil Bath.
- Oil Reservoir:** 4 U.S. Qts. (3,8 Liters).
- Fuel Tank:** 11 U.S. Gallons. (41,6 Liters).
- Full Load Operating Time:** 3.9 Hrs.
- Starter:** 12V Electric.
- Standard Features:** Instrument Panel with Manual Throttle Control, Manual Choke Control, Starter/Ignition Switch, and Ammeter.

WISCONSIN PUBLISHED PERFORMANCE
 Maximum Continuous BHP 24 @ 2800 RPM
 Maximum Dynamic BHP 30 @ 2800 RPM



THE GORMAN-RUPP COMPANY • MANSFIELD, OHIO

GORMAN-RUPP OF CANADA LIMITED • ST. THOMAS, ONTARIO, CANADA

Specifications Subject to Change Without Notice

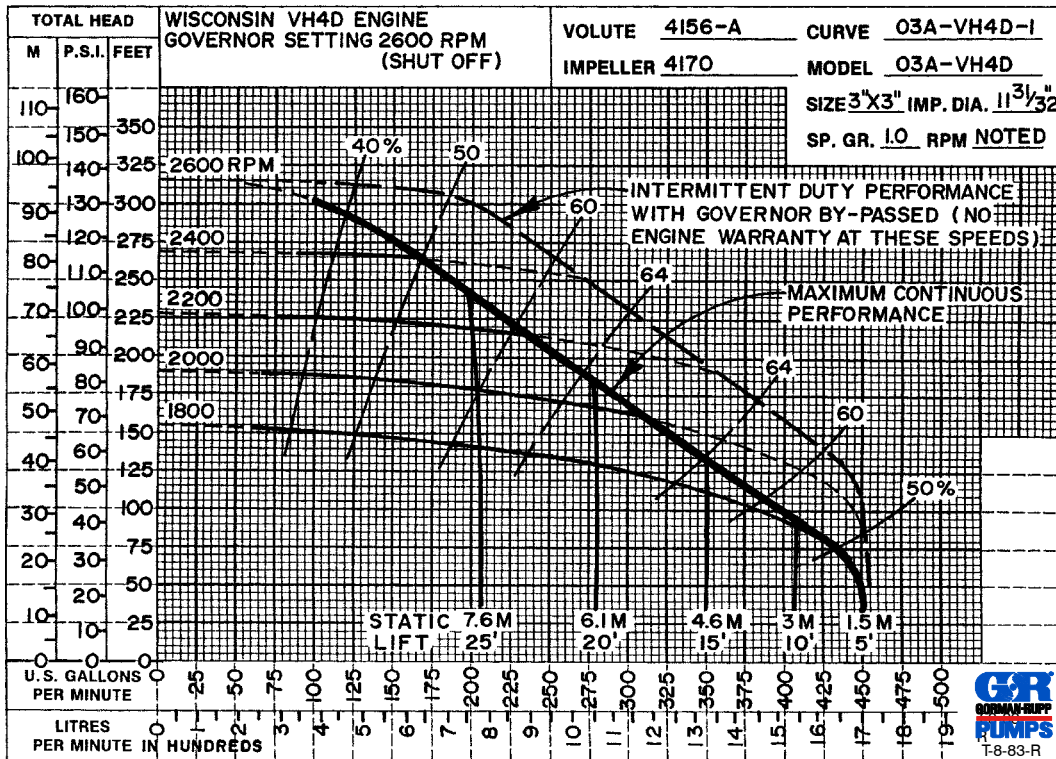
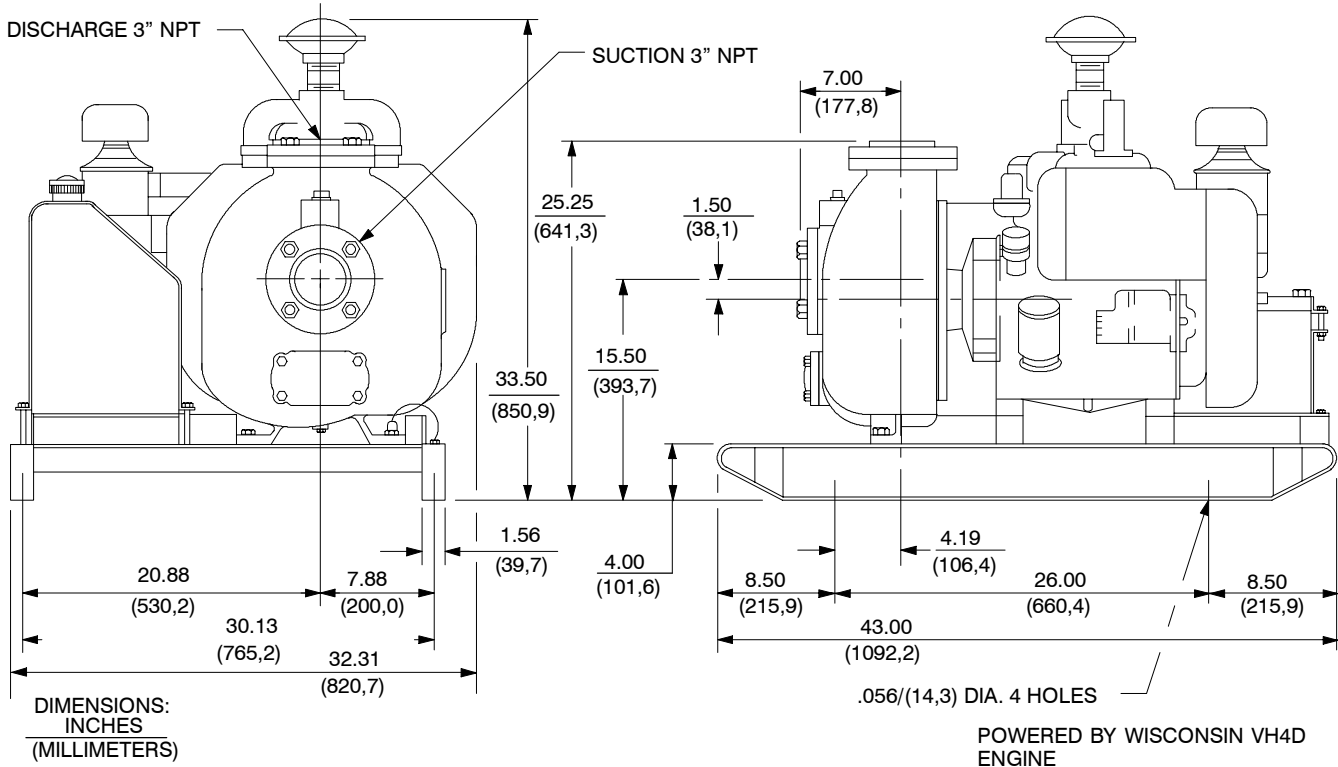
Printed in U.S.A.

Specification Data

SECTION 20, PAGE 500

APPROXIMATE
DIMENSIONS AND
WEIGHTS

	<u>SKID BASE</u>	<u>2-WHEEL</u>
NET WEIGHT:	688 LBS. (231 KG.)	890 LBS. (404 KG.)
SHIPPING WEIGHT:	805 LBS. (365 KG.)	890 LBS. (404 KG.)
EXPORT CRATE SIZE:	43 CU. FT. (1,2 CU. M.)	100 CU. FT. (2,8 CU. M.)



THE GORMAN-RUPP COMPANY • MANSFIELD, OHIO

GORMAN-RUPP OF CANADA LIMITED • ST. THOMAS, ONTARIO, CANADA

Specifications Subject to Change Without Notice

Printed in U.S.A.