

ACE



# Self Priming Centrifugal Pump

## Model 03H1-CH13 S/G

### Size 3" x 3"

Total Head		Capacity of Pump in U.S. Gallons per Minute (GPM) at Continuous Performance			
P.S.I.	Feet				
68.9	159	70	70	70	70
60.7	140	155	155	155	155
52.0	120	156	221	221	221
43.4	100	157	222	290	290
34.7	80	158	223	295	356
26.0	60	158	224	296	359
17.3	40	158	225	299	360
<b>Suction Lift</b>		<b>25'</b>	<b>20'</b>	<b>15'</b>	<b>10'</b>



#### PUMP SPECIFICATIONS

**Size:** 3" x 3" (76 mm x 76 mm) NPT - Female.

**Casing:** Aluminum Alloy 356-T6.

Maximum Operating Pressure 103 psi (710 kPa).\*

**Enclosed Type, Five Vane Impeller:** Aluminum Alloy 356-T6.  
Handles 7/16" (11,1 mm) Diameter Spherical Solids.

**Replaceable Wear Rings:** Copper Alloy C93200.

**Shaft Sleeve:** Alloy Steel 4130.

**Seal:** Type 2, Mechanical, Self-Lubricated. Carbon Rotating Face. Ni-Resist Stationary Face. Fluorocarbon Elastomers (DuPont Viton® or Equivalent). Stainless Steel 18-8 Cage and Spring. Maximum Temperature of Liquid Pumped, 160°F (71 °C).\*

**Suction Flange:** Aluminum Alloy 356-T6.

**Gaskets:** Cork.

**Hardware:** Standard Plated Steel.

**Standard Equipment:** 90° Discharge Elbow. Rollover Base  
w/Rubber Feet.

**Optional Equipment:** Two Wheel Truck Assembly with 10.00" x 2.75" (254 mm x 70 mm) Semi-Pneumatic Tires. Battery.

*\*Consult Factory for Applications Exceeding Maximum Pressure and/or Temperature Indicated.*

#### ENGINE SPECIFICATIONS

**Model:** Kohler CH13.

**Type:** Single Cylinder, Air Cooled, Overhead Valve, Gasoline Engine.

**Displacement:** 24.3 Cu. In. (398 cc).

**Cylinder:** Aluminum w/Cast Iron Liner.

**Governor:** Mechanical; Adjustable.

**Oil Reservoir:** 2.1 U.S. Qts. (1,9 liter).

**Air Cleaner:** Dual Element w/Precleaner.

**Fuel Tank:** 5 U.S. Qts. (4,7 liter).

**Full Load Operating Time:** 1 Hr.

**Starter:** Recoil or 12V Electric w/15a Alternator.

**Ignition System:** Electronic; Solid State.

**Standard Equipment:** Muffler. Manual Choke and Throttle Control w/Top Speed Limit. Oil Sentry™ Shut Down. Oil Fill w/Dipstick; Drain Port Each Side.

#### KOHLER PUBLISHED PERFORMANCE:

Maximum Continuous 10.4 BHP (7,7 kW) @ 3600 RPM



THE GORMAN-RUPP COMPANY • MANSFIELD, OHIO

GORMAN-RUPP OF CANADA LIMITED • ST. THOMAS, ONTARIO, CANADA

www.grpumps.com

Specifications Subject to Change Without Notice

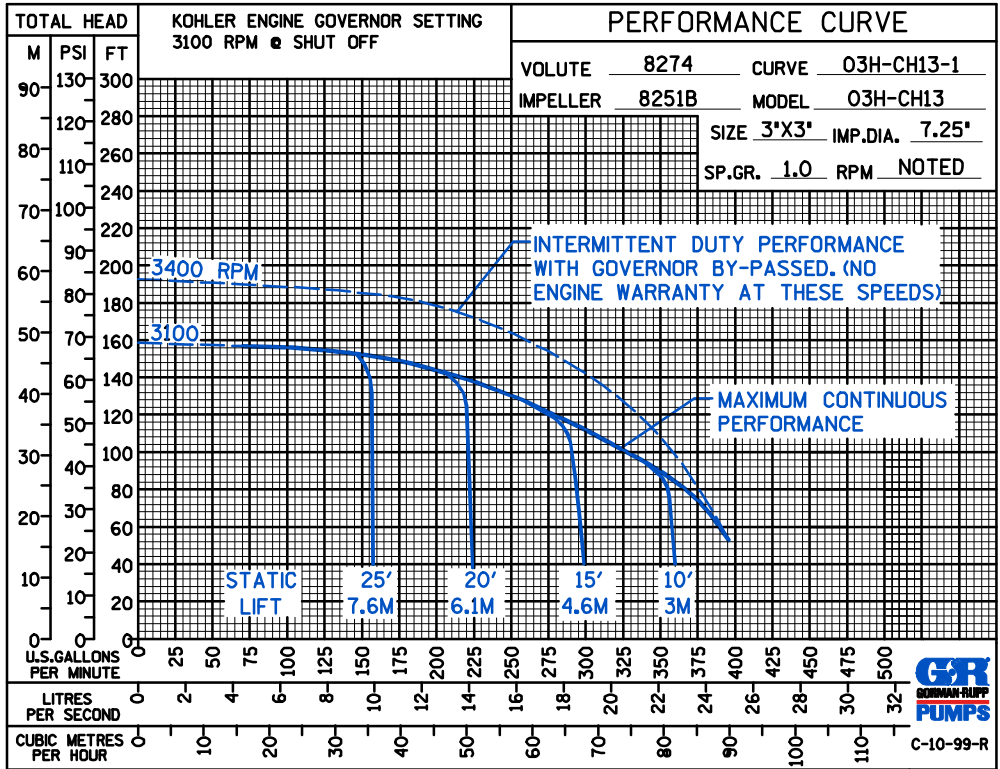
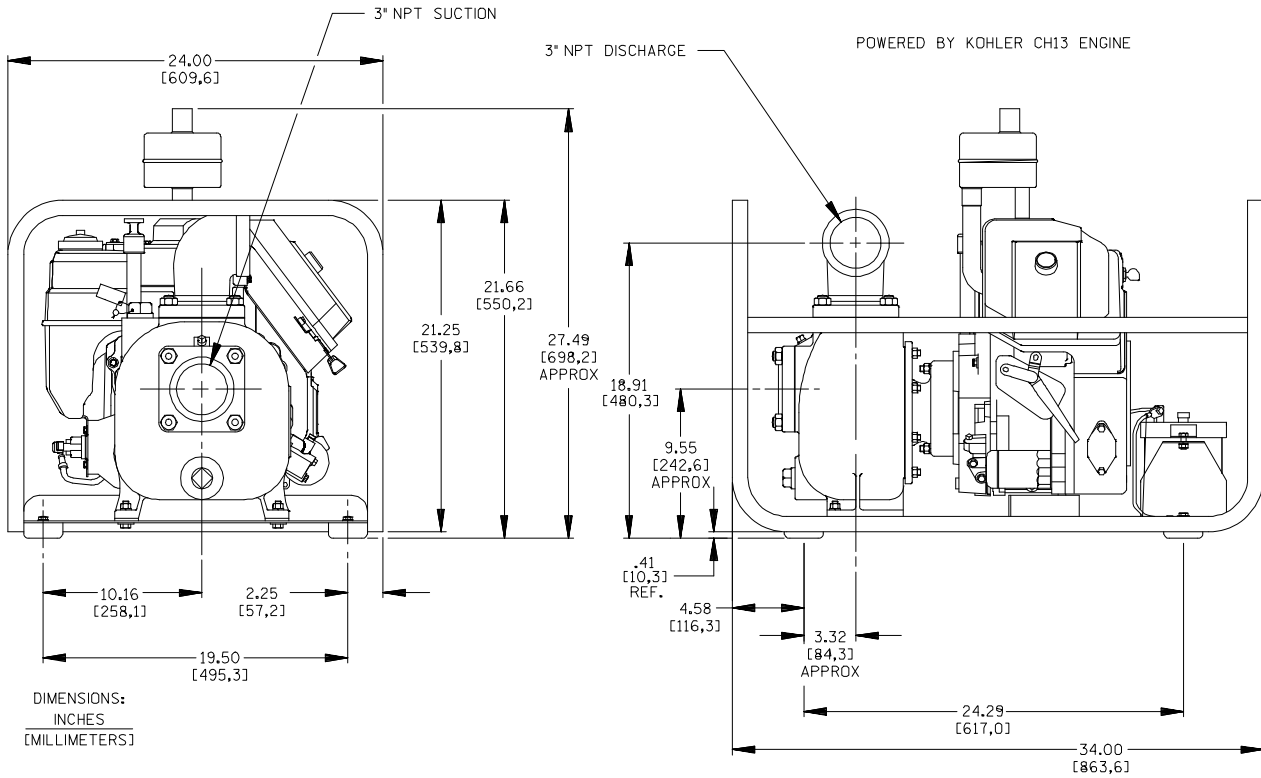
Printed in U.S.A.

**Specification Data**

SECTION 20, PAGE 300

APPROXIMATE  
DIMENSIONS and  
WEIGHTS

**NET WEIGHT** 160 LBS. (73 KG.)  
**SHIPPING WEIGHT** 245 LBS. (111 KG.)  
**EXPORT CRATE SIZE** 33 CU. FT. (0,9 CU. M.)  
**WHEEL KIT ADD** 25 LBS. (11,3 KG.)  
**SHIPPING CRATE** 3 CU. FT. (0,1 CU. M.)



THE GORMAN-RUPP COMPANY • MANSFIELD, OHIO

GORMAN-RUPP OF CANADA LIMITED • ST. THOMAS, ONTARIO, CANADA

Specifications Subject to Change Without Notice

Printed in U.S.A.