



Diesel Engine Driven Self Priming Centrifugal Pump

Model 82D1-1B20 FT4-X



Size 2" x 2"

Total Head		Capacity Of Pump in U.S. Gallons Per Minute (GPM) at Continuous Performance for Petroleum				
P.S.I.	Feet					
31.2	90	34	34	34	34	34
27.7	80	65	75	75	75	75
24.3	70	79	96	100	100	100
20.8	60	84	107	118	118	118
17.3	50	87	111	130	134	134
13.9	40	91	115	135	147	147
10.4	30	93	119	139	155	162
6.9	20	97	123	143	162	171
Suction Lift		25'	20'	15'	10'	5'



PUMP SPECIFICATIONS

- Size:** 2" x 2" (51 mm x 51 mm) NPT - Female.
- Casing:** Aluminum 356-T6 with Gray Iron 30 Cutwater Insert. Maximum Operating Pressure 50 psi (345 kPa).*
- Semi-Open Type, Three Vane Impeller:** Aluminum 356-T6. Handles 5/8" (15,8 mm) Diameter Spherical Solids.
- Replaceable Wear Plate:** Carbon Steel ASTM A36.
- Intermediate Bracket:** Gray Iron 30.
- Seal:** Type 21, Mechanical, Self-Lubricated. Carbon Rotating Face. Ni-Resist Stationary Face. Fluorocarbon Elastomers (DuPont Viton® or Equivalent). Stainless Steel 18-8 Cage and Spring. Maximum Temperature of Liquid Pumped, 160°F (71°C).*
- Shaft Sleeve:** Stainless Steel 304.
- Flap Valve:** Buna-N^w/Nylon Reinforcement, Gray Iron 30 and Sintered Powdered Steel.
- Flange:** Gray Iron 30.
- Gaskets:** Vegetable Fiber.
- Hardware:** Standard Plated Steel.

Standard Equipment: 90° Discharge Elbow.
Rollover Base with Rubber Feet.

Optional Equipment: Wheel Kit with Semi-Pneumatic Tires.

**Consult Factory for Applications Exceeding Maximum Pressure and/or Temperature Indicated.*

WARNING!

This unit is designed to handle volatile, flammable liquids. To reduce the risk of fire or explosion, do not operate near open flames, sparks, cigarettes or any other ignition source. Do not operate the unit in an explosive atmosphere or unventilated area. Connect the attached ground cable to the nearest grounding point on the tank being filled. Shut off the engine and allow it to completely cool before refueling.

ENGINE SPECIFICATIONS

- Model:** Hatz 1B20.
- EPA Tier:** Final Tier 4.
- Type:** Single Cylinder, Four Cycle, Air Cooled, Diesel Engine.
- Displacement:** 14.8 Cu. In. (243 cc).
- Lubrication:** Forced Circulation.
- Air Cleaner:** Dry Type.
- Fuel Tank:** 0.79 U.S. Gal. (3,0 Liters).
- Full Load Operating Time:** 2.6 Hours.
- Starter:** Rope Recoil.

Standard Equipment:

Muffler Heat Shield and Fuel Splash Guard.
90° Exhaust Deflector. Exhaust Silencer
Muffler^w/Guard. Grounding Wire.

HATZ PUBLISHED PERFORMANCE:

Maximum Continuous Net B.H.P.
4.2 (3,1 kW) @ 3600 RPM



GORMAN-RUPP PUMPS

www.grpumps.com

Specifications Subject to Change Without Notice

Printed in U.S.A.

Specification Data

SECTION 20, PAGE 206

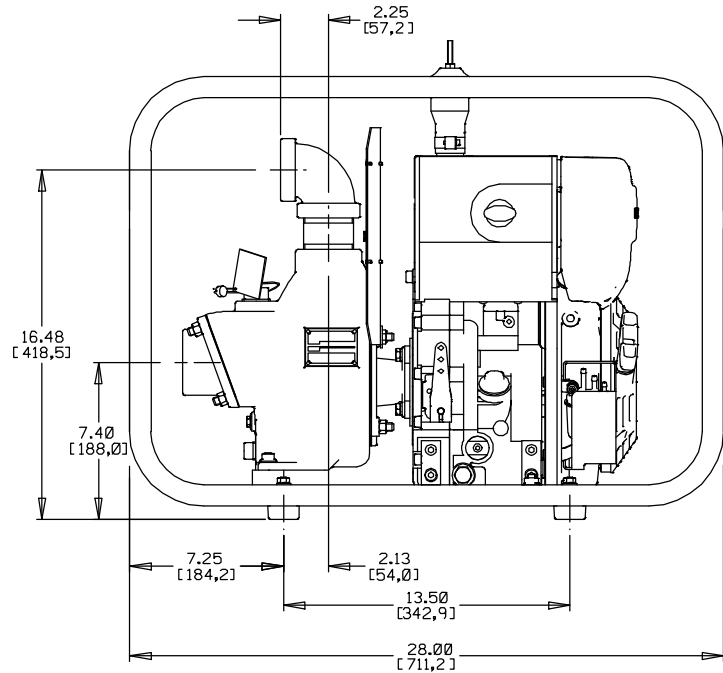
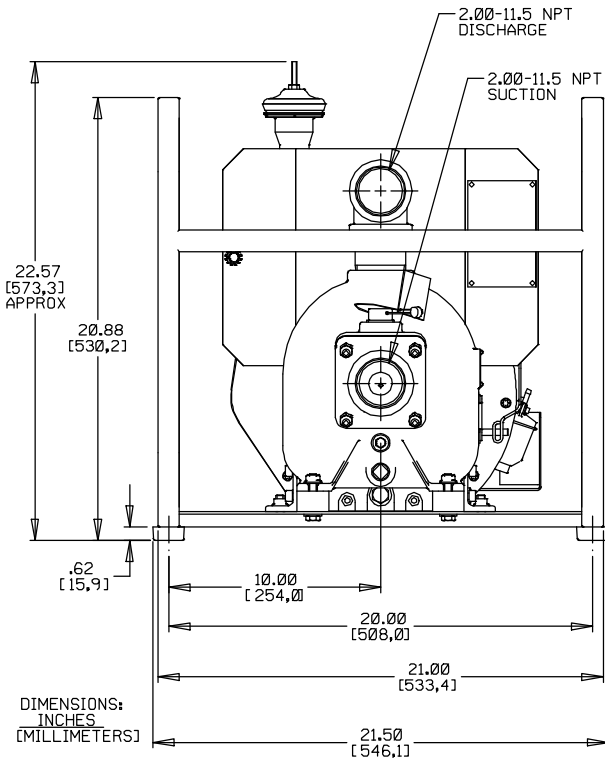
APPROXIMATE
DIMENSIONS and WEIGHTS

NET WEIGHT: 117 LBS. (53,1 KG.)

SHIPPING WEIGHT: 123 LBS. (55,8 KG.)

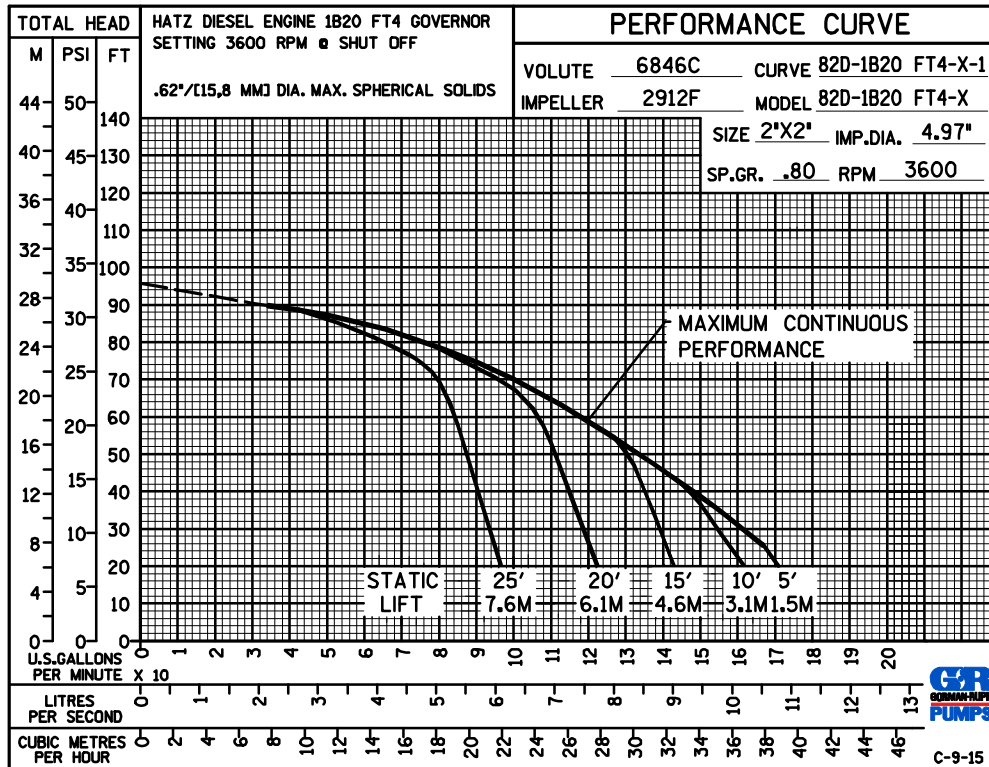
EXPORT CRATE SIZE: 9.3 CU. FT. (0,26 CU. M.)

WHEEL KIT ADD 22 LBS. (10 KG.); SHIPPING CRATE (SEPARATE) 3 CU. FT. (0,1 CU. M.)



POWERED BY HATZ 1B20 DIESEL ENGINE

**PERFORMANCE
BASED ON
PETROLEUM**



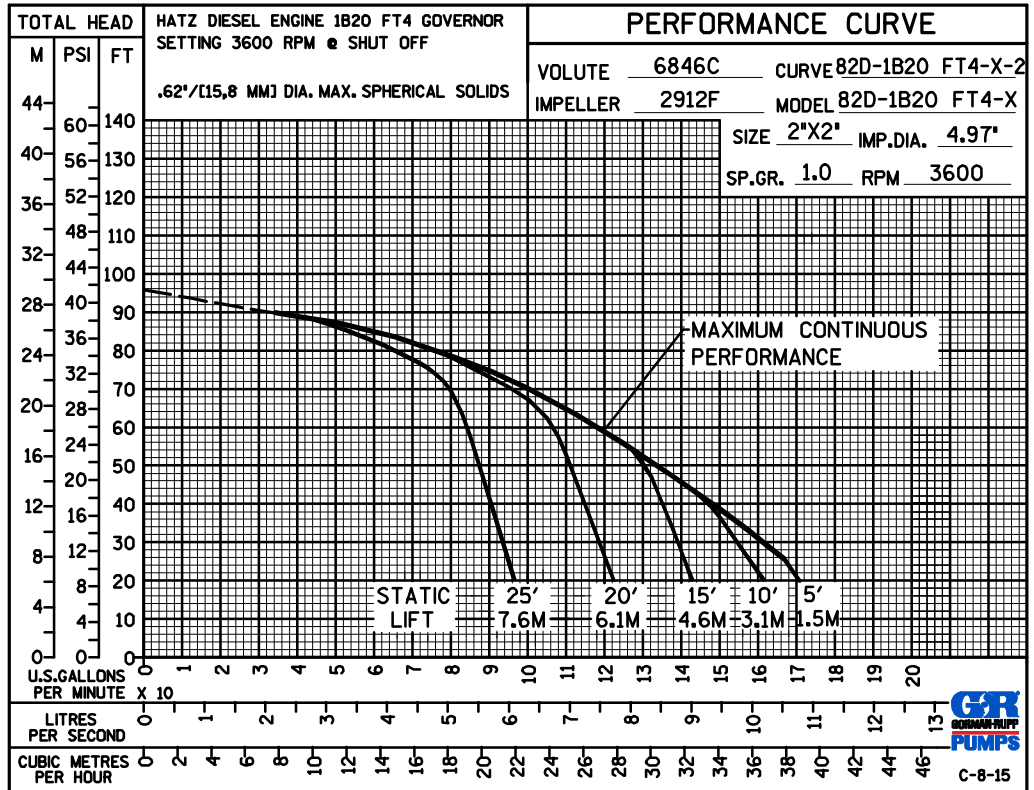
GORMAN-RUPP PUMPS

www.grpumps.com

Specifications Subject to Change Without Notice

Printed in U.S.A.

PERFORMANCE
BASED ON
WATER



GORMAN-RUPP PUMPS

www.grpumps.com

Specifications Subject to Change Without Notice

Printed in U.S.A.