

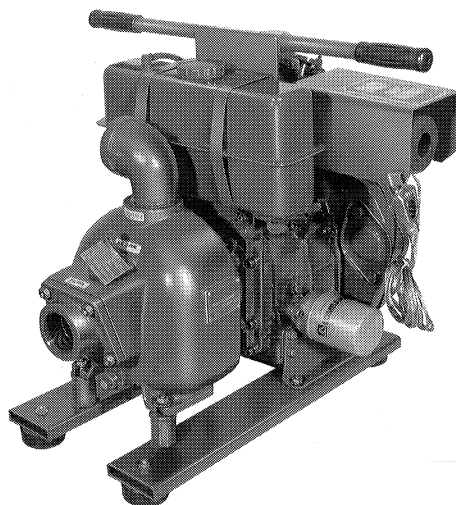
A B C E G

# Self Priming Centrifugal Pump

Diesel Engine Driven

Model 82D1-6LD325-X

Size 2" x 2"



## PUMP SPECIFICATIONS

Size: 2" x 2" [50,8 mm x 50,8 mm] N.P.T.-Female  
 Casing: Aluminum No. 356-T6 With Gray Iron No. 30  
 Cutwater Insert  
 (Maximum Operating Pressure 65 psi. [448 kPa])  
 Impeller: Open Type, Three Vanes, Aluminum No. 356-T6  
 (Handles  $\frac{5}{8}$ " [15,9 mm] Dia. Spherical Solids)  
 Wear Plate-Replaceable: Steel No. 1018  
 Intermediate Bracket: Gray Iron No. 30  
 Seal: Type 21, Mechanical Self-Lubricated.  
 Rotating Face is Carbon.  
 Stationary Face is Ni-Resist.  
 Elastomers are Viton.  
 Cage and Spring are Stainless Steel No. 18-8.  
 Maximum Temperature of Liquid Pumped, 160°F [71°C].  
 Shaft Sleeve: Stainless Steel No. 304  
 Flap Valve: Nitrile Nylon Coated Fabric; Gray Iron No. 30  
 Flange: Gray Iron No. 30  
 Gaskets: Resistant Synthetic Rubber & Cork  
 Hardware: Standard Plated Steel  
**Standard Equipment:**  
 Rail Type Base with Rubber Feet  
 Carrying Handle  
 90° Discharge Elbow  
 Grounding Wire  
 Muffler Heat Shield and Fuel Splash Guard  
**Optional Equipment:**  
 2 Wheel Truck Assy with Semi-Pneumatic Tires,  
 3" x 12" [76,2 mm x 304,8 mm]

## ENGINE SPECIFICATIONS

Model: Lombardini 6LD325  
 Type: Single Cylinder, Four Cycle,  
 Air Cooled, Diesel Engine  
 Displacement: 19.83 Cu. In. [325 cc]  
 Governor: Mechanical  
 Fuel Injection: Direct  
 Lubrication: Gear Pump Forced System  
 Air Cleaner: Dry Type  
 Oil Reservoir: 1.34 U.S. Quarts [1.27 L]  
 Fuel Tank: 1.2 U.S. Gallons [4.54 L]  
 Operating Time; Full Load: 2.48 Hours  
 Starter: Rope Rewind  
**Standard Equipment:**  
 Spark Arresting Muffler  
 Hand Throttle and Stop Control

## LOMBARDINI PUBLISHED PERFORMANCE:

Max. Cont. B.H.P. 5.4 @ 3600 RPM  
 Max. Dyn. B.H.P. 6.5 @ 3600 RPM

**WARNING:** Despite the precautions taken to make this unit as safe as possible for use in transferring flammable liquids, it is important that EXTREME CARE be taken when operating to prevent FIRE OR EXPLOSION. Any possibility of cigarette or other smoking apparatus, spark, flames, etc., MUST be eliminated. Attach the grounding cable furnished with the unit to the nearest available grounding point on the tank being filled. The unit MUST be operated in a NON-COMBUSTIBLE, WELL VENTILATED area only. NEVER attempt to refuel a hot or running engine.



THE GORMAN-RUPP COMPANY • MANSFIELD, OHIO

GORMAN-RUPP OF CANADA LIMITED • ST. THOMAS, ONTARIO, CANADA

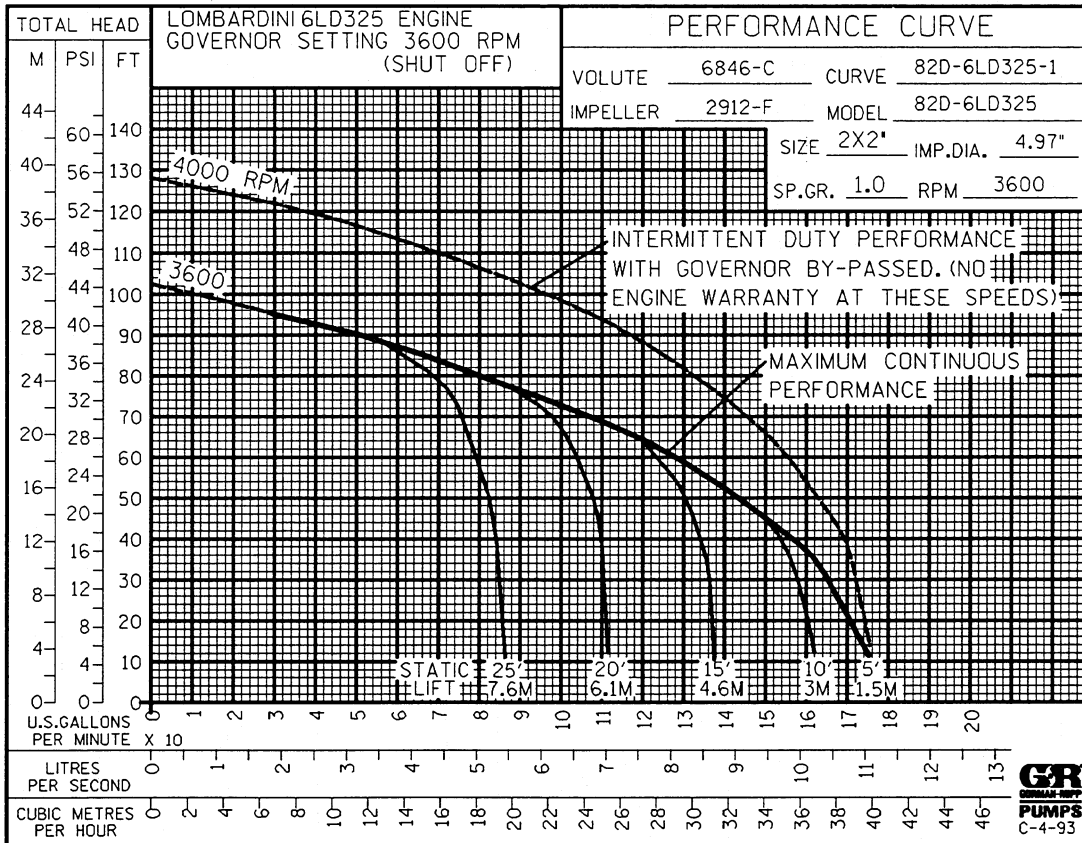
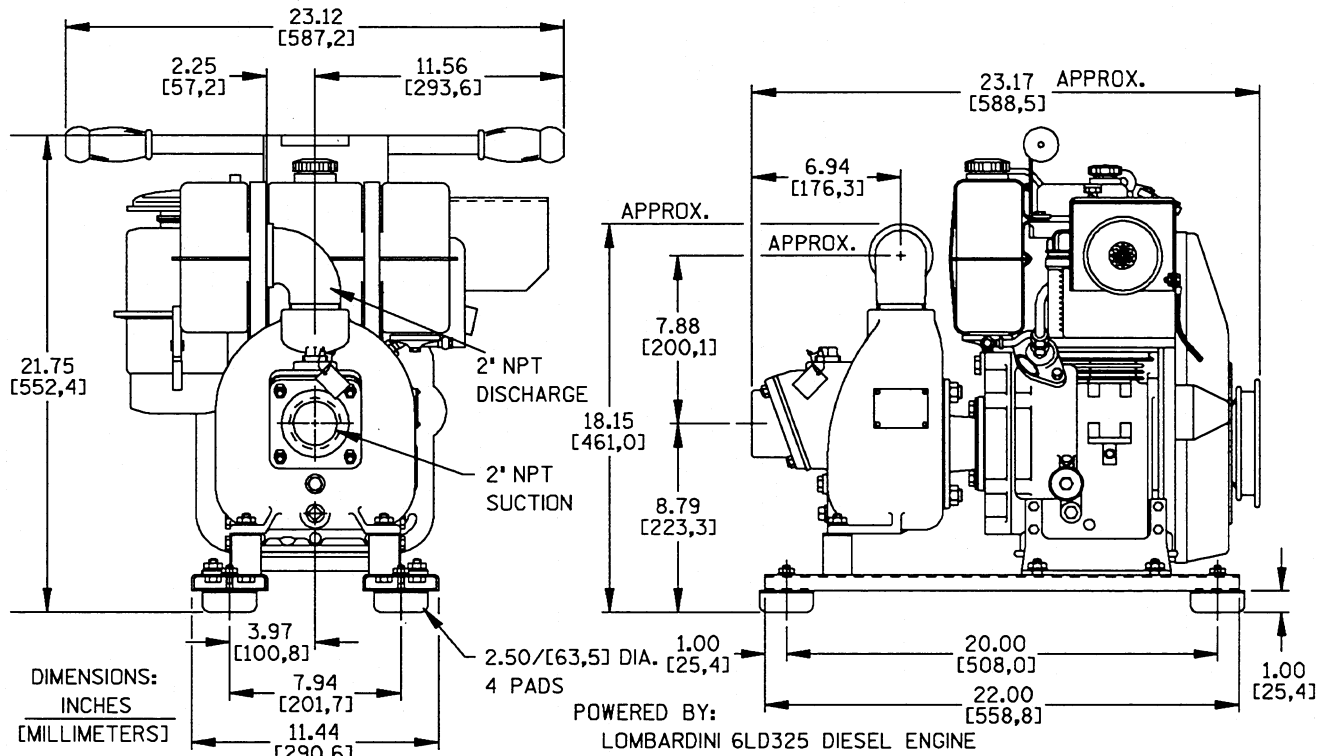
Printed in U.S.A.

**Specification Data**

SECTION 20, PAGE 177

OVERALL DIMENSIONS  
and  
WEIGHTS APPROXIMATE

|                           |                         |                         |
|---------------------------|-------------------------|-------------------------|
|                           | <b>SKID BASE</b>        | <b>2-WHEEL</b>          |
| <b>NET WEIGHT:</b>        | 160 LBS. [73 KG.]       | 196 LBS. [89 KG.]       |
| <b>SHIPPING WEIGHT:</b>   | 174 LBS. [79 KG.]       | 214 LBS. [97 KG.]       |
| <b>EXPORT CRATE SIZE:</b> | 13 CU. FT. [.37 CU. M.] | 16 CU. FT. [.45 CU. M.] |



THE GORMAN-RUPP COMPANY • MANSFIELD, OHIO

GORMAN-RUPP OF CANADA LIMITED • ST. THOMAS, ONTARIO, CANADA

Printed in U.S.A.