

A B C E G

Self Priming Centrifugal Pump



Gasoline Engine Driven
Model 82D1-9-X

Size 2" x 2"



8 M

Total Head		Capacity Of Pump In U.S. Gallons Per Minute (GPM) At Continuous Performance				
P.S.I.	Feet					
31.2	90	28	28	28	28	28
27.7	80	63	68	68	68	68
24.3	70	75	87	88	88	88
20.8	60	79	96	106	106	106
17.3	50	82	101	115	122	124
13.8	40	84	104	119	131	140
10.4	30	85	107	123	134	149
6.9	20	86	109	126	137	154
Suction Lift		25'	20'	15'	10'	5'



PUMP SPECIFICATIONS

- Size:** 2" x 2" (51 mm x 51 mm) NPT - Female.
- Pump Casing:** Aluminum Alloy 356-T6 w/Gray Iron No. 30 Cutwater Insert. Maximum Operating Pressure 51 psi (352 kPa).*
- Semi-Open Type, Three Vane Impeller:** Aluminum Alloy 356-T6. Handles 5/8" (15,9 mm) Diameter Spherical Solids.
- Replaceable Wear Plate:** Carbon Steel 1026.
- Intermediate Bracket:** Gray Iron No. 30.
- Seal:** Type 21, Mechanical, Self-Lubricated. Carbon Rotating Face. Ni-Resist Stationary Face. Fluorocarbon Elastomers (DuPont Viton® or Equivalent). Stainless Steel Type 18-8 Cage and Spring. Maximum Temperature of Liquid Pumped, 160°F (71°C).*
- Shaft Sleeve:** Stainless Steel No. 304.
- Flap Valve:** Nitrile Nylon Coated Fabric; Gray Iron No. 30.
- Flange:** Gray Iron No. 30.
- Gaskets:** Cork w/Nitrile Binder NC710.
- Hardware:** Standard Plated Steel.

Standard Equipment: Roll Cage w/Rubber Feet. Strainer. 90° Discharge Elbow.

Optional Equipment: Two Wheel Truck Assembly With 2.75" x 10" (70 mm x 254 mm) Semi-Pneumatic Tires.

* Consult Factory for Applications Exceeding Maximum Pressure and/or Temperature Indicated.

WARNING!

This unit is designed to handle volatile, flammable liquids. To reduce the risk of fire or explosion, do not operate near open flames, sparks, cigarettes or any other ignition source. Do not operate the unit in an explosive atmosphere or unventilated area. Connect the attached ground cable to the nearest grounding point on the tank being filled. Shut off the engine and allow it to completely cool before refueling.

ENGINE SPECIFICATIONS

- Model:** Briggs & Stratton.
- Type:** Single Cylinder, Four Cycle, Air Cooled, Gasoline Engine.
- Displacement:** 9.03 Cu. In. (148 cc).
- Governor:** Air Vane.
- Lubrication:** Splash System.
- Air Cleaner:** Oil Bath.
- Oil Reservoir:** 1.25 U.S. Pts. (0,6 Liter).
- Fuel Tank:** 3 U.S. Qts. (2,8 Liters).
- Full Load Operating Time:** 2.3 Hrs.
- Starter:** Rope Rewind.

Standard Equipment: Panel Mounted Manual Stop-Run Choke Control, Manual Throttle Control with Top Speed Limit. Spark Arresting Muffler and Heat Shield. Shielded Ignition. Grounding Wire. Fuel Splash Guard.

BRIGGS & STRATTON PUBLISHED PERFORMANCE:
Maximum Continuous BHP 3 @ 3600 RPM



THE GORMAN-RUPP COMPANY • MANSFIELD, OHIO

GORMAN-RUPP OF CANADA LIMITED • ST. THOMAS, ONTARIO, CANADA

www.grpumps.com

Specifications Subject to Change Without Notice

Printed in U.S.A.

Specification Data

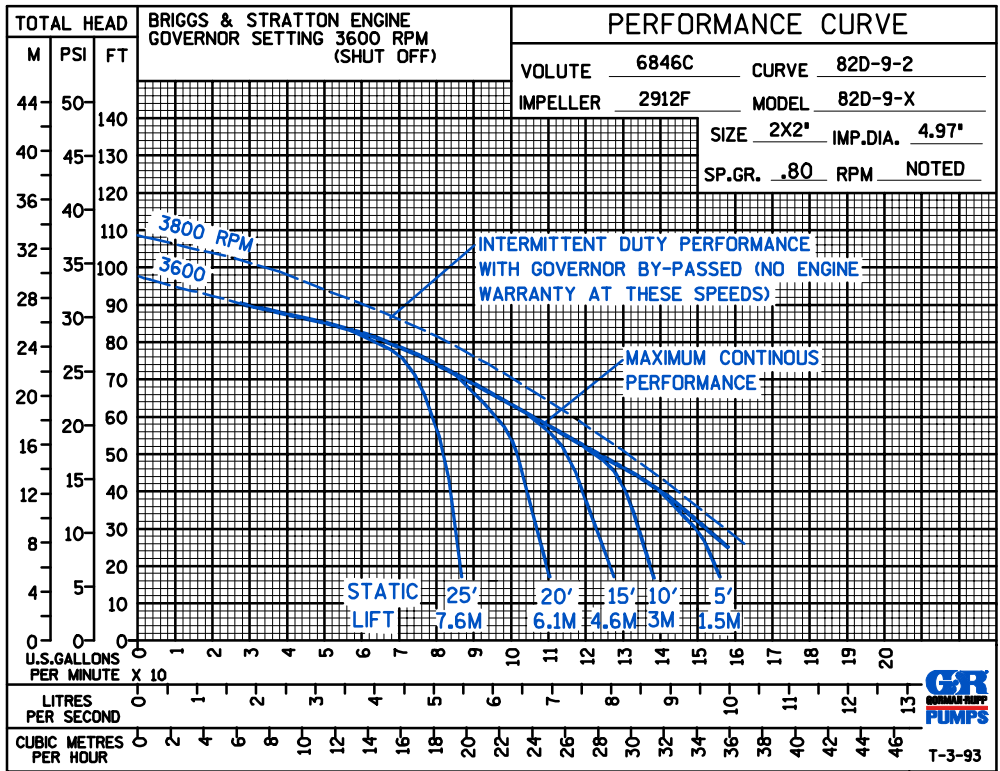
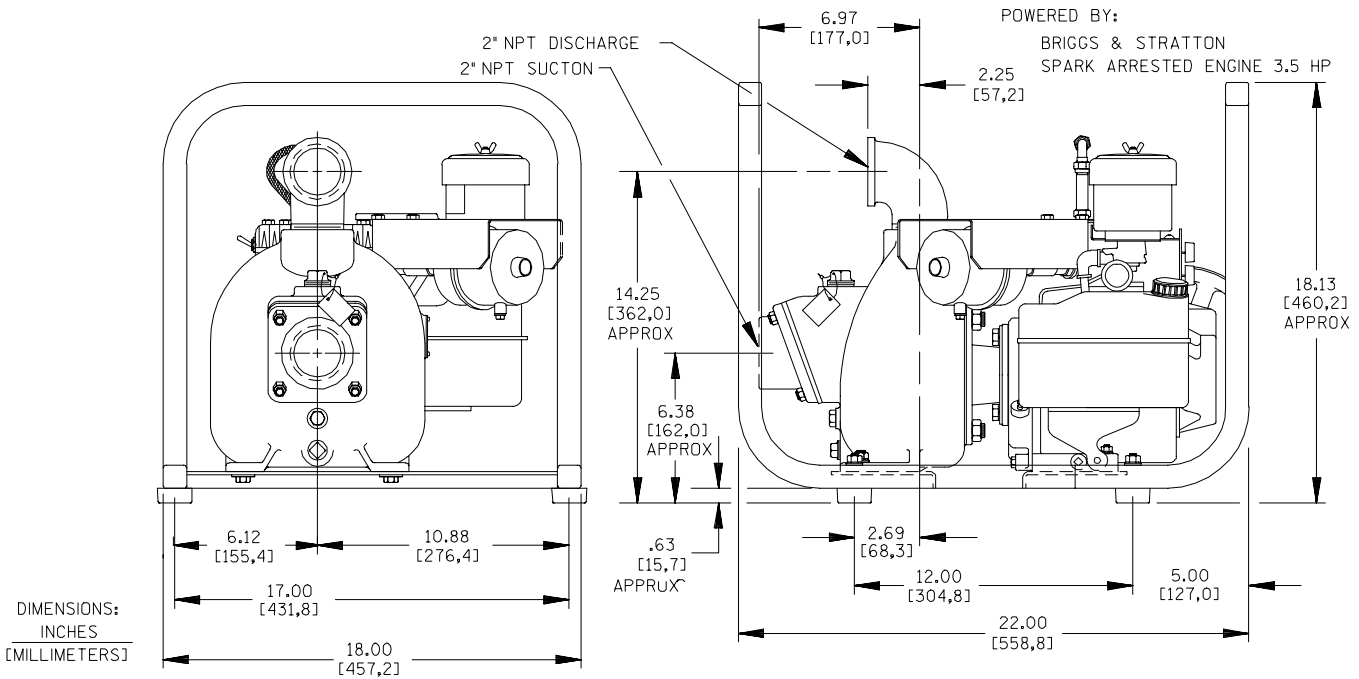
APPROXIMATE DIMENSIONS and WEIGHTS

ROLL CAGE

2-WHEEL

NET WEIGHT: 60 LBS. (27,2 KGS.) **88 LBS. (39,9 KGS.)**
SHIPPING WEIGHT: 75 LBS. (34,0 KGS.) **98 LBS. (44,5 KGS.)**
EXPORT CRATE SIZE: 5.9 CU. FT. (0,17 CU. M.) **9.0 CU. FT. (0,25 CU. M.)**

SECTION 20, PAGE 175



THE GORMAN-RUPP COMPANY • MANSFIELD, OHIO

GORMAN-RUPP OF CANADA LIMITED • ST. THOMAS, ONTARIO, CANADA

Specifications Subject to Change Without Notice

Printed in U.S.A.