



**PRIME-AIRE[®] SERIES
PUMP MODEL
PA10A60-6068T-ESP**

**MANUAL
PART 2 of 3**

**PARTS
LIST
WITH
PERFORMANCE CURVE**

THE GORMAN-RUPP COMPANY • MANSFIELD, OHIO

GORMAN-RUPP OF CANADA LIMITED • ST. THOMAS, ONTARIO, CANADA Printed in U.S.A.

www.gormanrupp.com

©Copyright by the Gorman-Rupp Company



The engine exhaust from this product contains chemicals known to the State of California to cause cancer, birth defects or other reproductive harm.

PERFORMANCE CURVE – SECTION A

RECORDING MODEL AND SERIAL NUMBERS

Please record the pump model and serial number in the spaces provided below and in the separate Installation/Operation Manual accompanying your pump. Your Gorman-Rupp distributor needs this information when you require parts or service.

Pump Model: _____

Serial Number: _____

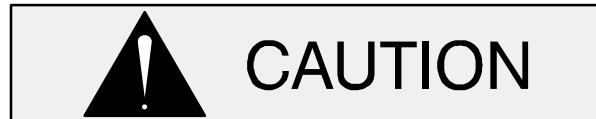
WARRANTY INFORMATION

The pump warranty is provided as part of Gorman-Rupp's support program for customers who operate and maintain their equipment as described in this manual and other accompanying literature. Please note that should the equipment be abused or modified to change its performance beyond the original factory specifications, the warranty will become void and any claim will be denied.

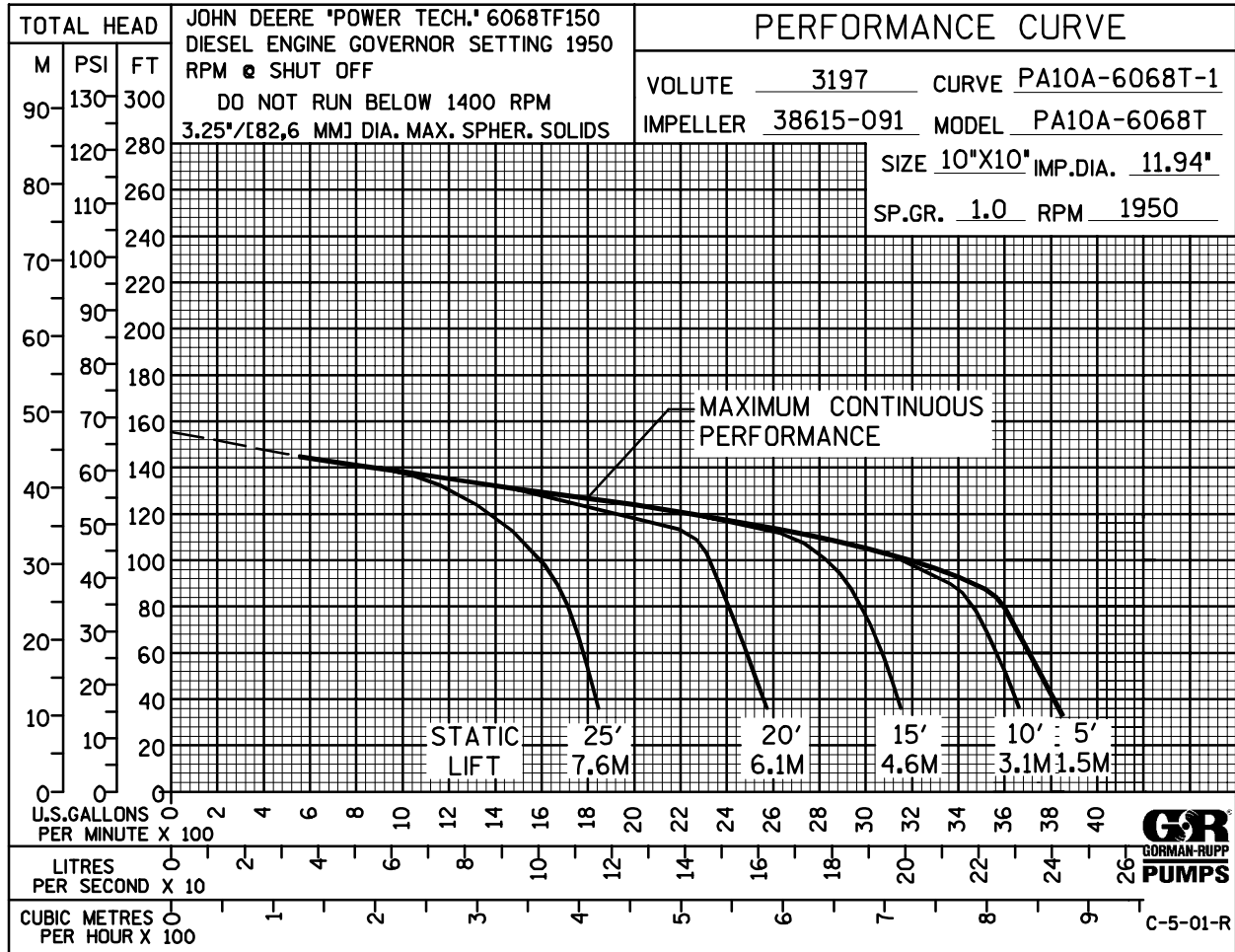
PERFORMANCE CURVE

The performance curve on the following page is based on 70° F (21° C) clear water at sea level with minimum suction lift. Since pump installations are seldom identical, your performance may be different due to such factors as viscosity, specific gravity, elevation, temperature, and impeller trim.

If your pump serial number is followed by an "N", your pump is **NOT** a standard production model. Contact the Gorman-Rupp Company to verify performance or part numbers.

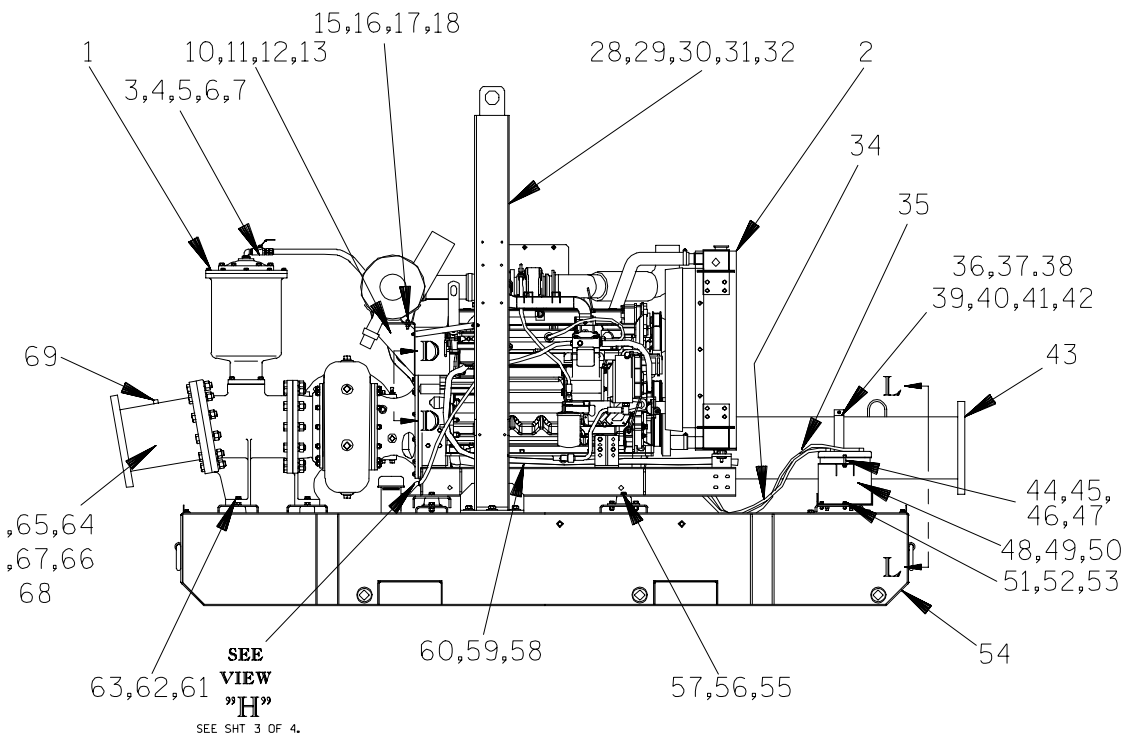
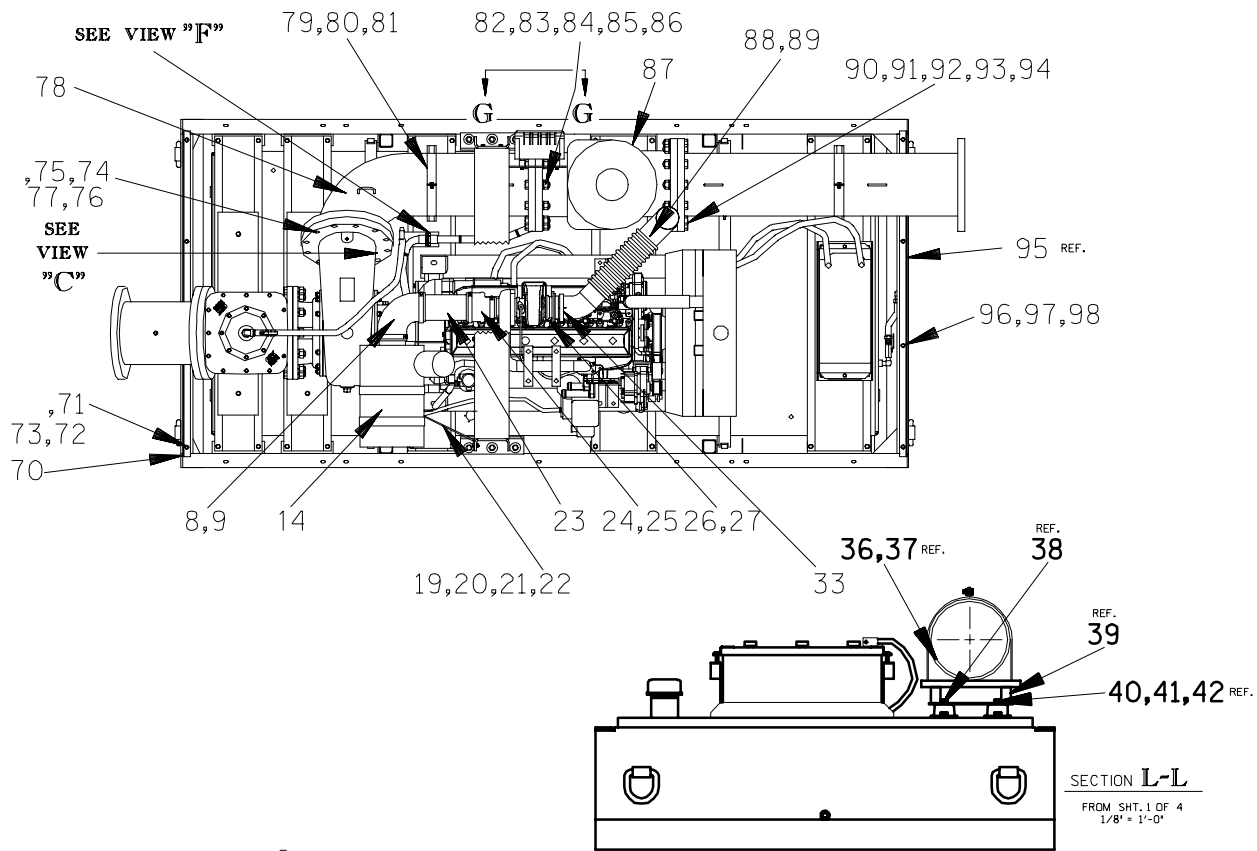


Pump speed and operating condition points must be within the continuous performance range shown on the curve.



Performance Curve – Model PA10A60-6068T-ESP

This Page Intentionally Blank



THE GORMAN-RUPP COMPANY • MANSFIELD, OHIO

GORMAN-RUPP OF CANADA LIMITED • ST. THOMAS, ONTARIO, CANADA

Printed in U.S.A.

S/N 1283489 Up
PUMP ISSUE 1

PARTS LIST

PA10A60-6068T-ESP Pump Model Assembly

If your pump serial number is followed by an "N", your pump is NOT a standard production model. Contact the Gorman-Rupp Company to verify part numbers.

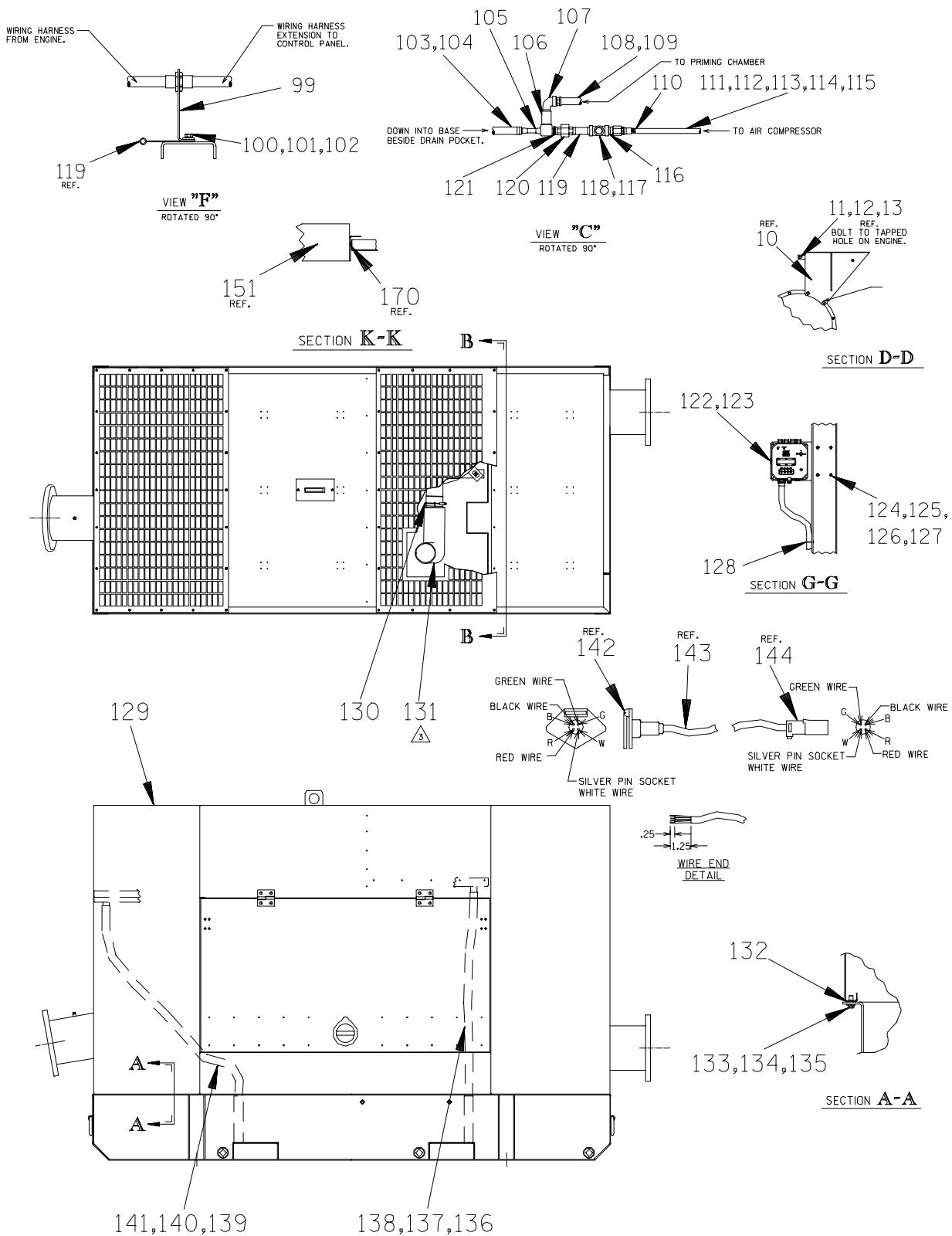
ITEM NO.	PART NAME	PART NUMBER	MAT'L CODE	QTY	ITEM NO.	PART NAME	PART NUMBER	MAT'L CODE	QTY
1	PUMP ASSEMBLY	46133-629	----	1	51	HEX HD CAPSCREW	B0605	15991	4
2	JOHN DEERE ENGINE	29224-233	----	1	52	HEX NUT	D06	15991	4
3	REDUCING PIPE BUSHING	AP1608	11999	1	53	LOCK WASHER	J06	15991	4
4	STREET ELBOW	RS08	11999	1	54	BASE ASSEMBLY	41565-583	----	1
5	BALL VALVE	26631-052	----	1	55	HEX HD CAPSCREW	B0806	15991	4
6	CONNECTOR	S1598	----	1	56	FLAT WASHER	K08	15991	4
7	HOSE BARB FITTING	26523-047	----	1	57	LOCK WASHER	J08	15991	4
8	90° RUBBER ELBOW	SUPPLIED WITH ENGINE			58	.75" I.D. X 65" LG HOSE	SUPPLIED WITH ENGINE		
9	HOSE CLAMP	SUPPLIED WITH ENGINE			59	HOSE CLAMP	26518-666	----	1
10	BRACKET ASSEMBLY	41881-696	24150	1	60	HOSE BARB FITTING	26523-393	----	1
11	CAPSCREW	22645-164	----	1	61	HEX HD CAPSCREW	B1010	15991	4
12	LOCK WASHER	21171-511	----	1	62	FLAT WASHER	K10	15991	4
13	FLAT WASHER	K06	15991	1	63	LOCK WASHER	J10	15991	4
14	AIR CLEANER	SUPPLIED WITH ENGINE			64	SUCTION PIPE ASSY	46353-773	24150	1
15	HEX HD CAPSCREW	B0604	15991	4	65	SUCTION PIPE GASKET	25113-040	----	1
16	FLAT WASHER	K06	15991	4	66	HEX HD CAPSCREW	B1415	15991	12
17	LOCK WASHER	J06	15991	4	67	LOCK WASHER	J14	15991	12
18	HEX NUT	D06	15991	4	68	HEX NUT	D14	15991	12
19	SUPPORT	34531-027	15000	1	69	PIPE PLUG	P04	15079	2
20	HEX HD CAPSCREW	B0504	15991	2	70	ANGLE ASSY	41818-648	----	REF
21	LOCK WASHER	J05	15991	2	71	HEX HD CAPSCREW	B0505	15991	4
22	HEX NUT	D05	15991	2	72	FLAT WASHER	K05	15991	4
23	EXHAUST PIPE	SUPPLIED WITH ENGINE			73	LOCK WASHER	J05	15991	4
24	HUMP REDUCER	SUPPLIED WITH ENGINE			74 *	DISCH ELBOW GASKET	25113-040	----	1
25	HOSE CLAMP	SUPPLIED WITH ENGINE			75	HEX HD CAPSCREW	B1414	15991	12
26	EXHAUST FLANGE ASSY	SUPPLIED WITH ENGINE			76	HEX NUT	D14	15991	12
27	EXHAUST CLAMP	SUPPLIED WITH ENGINE			77	LOCK WASHER	J14	15991	12
28	HOIST BAIL ASSY	44715-035	24150	1	78	DISCH ELBOW ASSY	46366-548	24150	1
29	HEX HD CAPSCREW	B1008	15991	6	79	PIPE CLAMP	22811-535	----	1
30	LOCK WASHER	J10	15991	6	80	34" LG RUBBER STRAP	18511-425	----	1
31	HEX NUT	D10	15991	6	81	SHIM SET	48261-045	----	4
32	WASHER	21161-442	----	6	82 *	GASKET	25113-040	----	1
33	MUFFLER CLAMP	29334-268	----	2	83	HEX HD CAPSCREW	B1415	15991	12
34	NEG BATTERY CABLE	47311-169	----	1	84	HEX NUT	D14	15991	12
35	POS BATTERY CABLE	47311-129	----	1	85	LOCK WASHER	J14	15991	12
36	PIPE CLAMP	22811-535	----	1	86	FLAT WASHER	K14	15991	12
37	34" LG RUBBER STRAP	18511-425	----	1	87	10" CHECK VALVE	46421-091	----	1
38	SHIM SET	48261-045	----	4		-CHK VALVE FLAPPER	26681-011	----	1
39	SUPPORT ASSEMBLY	41881-698	24150	1		-CHK VALVE CVR GSKT	26681-012	----	1
40	HEX HD CAPSCREW	B0805	15991	2	88	FLEX EXHAUST PIPE	29334-331	----	1
41	LOCK WASHER	J08	15991	2	89	EXHAUST BLANKET	29334-292	----	1
42	FLAT WASHER	K08	15991	2	90 *	GASKET	25113-040	----	1
43	PIPE ASSEMBLY	46353-151	24150	1	91	HEX HD CAPSCREW	B1415	15991	12
44	HEX HD CAPSCREW	B0607	15991	2	92	HEX NUT	D14	15991	12
45	LOCK WASHER	J06	15991	2	93	LOCK WASHER	J14	15991	12
46	FLAT WASHER	KE06	15991	2	94	FLAT WASHER	K14	15991	12
47	HEX NUT	D06	15991	2	95	ANGLE ASSEMBLY	41818-647	----	REF
48	BATTERY BOX ASSY	42431-030	24150	1	96	HEX HD CAPSCREW	B0505	15991	4
49	BATTERY BOX LID ASSY	42113-012	24150	1	97	FLAT WASHER	K05	15991	4
50	12V BOTTERY	SEE OPTIONS			98	LOCK WASHER	J05	15991	4

* INDICATES PARTS RECOMMENDED FOR STOCK

THE GORMAN-RUPP COMPANY • MANSFIELD, OHIO

GORMAN-RUPP OF CANADA LIMITED • ST. THOMAS, ONTARIO, CANADA

Printed in U.S.A.



THE GORMAN-RUPP COMPANY • MANSFIELD, OHIO

GORMAN-RUPP OF CANADA LIMITED • ST. THOMAS, ONTARIO, CANADA

Printed in U.S.A.

S/N 1283489 Up
PUMP ISSUE 1

PARTS LIST
PA10A60-6068T-ESP Pump Model Assembly

If your pump serial number is followed by an "N", your pump is **NOT** a standard production model. Contact the Gorman-Rupp Company to verify part numbers.

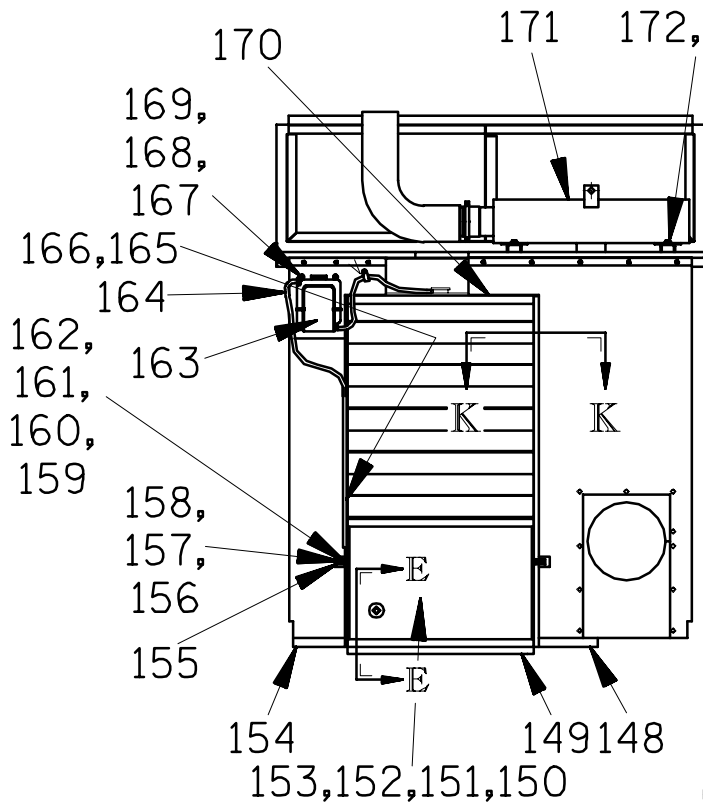
ITEM NO.	PART NAME	PART NUMBER	MAT'L CODE	QTY	ITEM NO.	PART NAME	PART NUMBER	MAT'L CODE	QTY
99	BRACKET	NOT REQUIRED			122	CONTROL PANEL BRACKET	34512-048	13000	1
100	HEX HD CAPSCREW	B0807	15991	1	123	FLAT WASHER	K04	15991	4
101	FLAT WASHER	K08	15991	1	124	HEX HD CAPSCREW	B0604	15991	4
102	LOCK WASHER	J08	15991	1	125	FLAT WASHER	K06	15991	4
103	.75" I.D. X 24" LG HOSE	18513-115	----	1	126	LOCK WASHER	J06	15991	4
104	HOSE CLAMP	26518-666	----	1	127	HEX NUT	D06	15991	4
105	VENTURI	26817-002	----	1	128	CABLE TIE	27111-218	----	2
106	PIPE COUPLING	AE08	15079	1	129	ENCLOSURE ASSY	42164-010	----	1
107	STREET ELBOW	RS08	11999	2	130	MUFFLER CLAMP	29334-268	----	1
108	MALE HOSE END	26525-020	----	1	131	EXHAUST TAIL PIPE	SUPPLIED WITH ENGINE		
109	.50 I.D. X 56" LG HOSE	18513-113	----	1	132	.370" LG FOAM TAPE	18668-003	----	1
110	HOSE ASSEMBLY	46341-422	----	1	133	HEX HD CAPSCREW	B0605	15991	18
111	CONDUIT STRAP	22811-257	----	1	134	FLAT WASHER	K06	15991	18
112	HEX HD CAPSCREW	B0404	15991	1	135	LOCK WASHER	J06	15991	18
113	FLAT WASHER	K04	15991	1	136	1.5" I.D. X 60" LG TUBING	18523-706	----	1
114	LOCK WASHER	J04	15991	1	137	1.5" I.D. X 60" LG TUBING	18523-706	----	1
115	HEX NUT	D04	15991	1	138	HOSE CLAMP	26518-667	----	2
116	MALE ADAPTOR	26351-065	----	2	139	1.5" I.D. X 70" LG TUBING	18523-706	----	1
117	1/2" TEE	U08	11999	1	140	1.5" I.D. X 70" LG TUBING	18523-706	----	1
118	PRESSURE RELIEF VALVE	26662-028	----	1	141	HOSE CLAMP	26518-667	----	2
119	BRACKET ASSEMBLY	41881-706	24150	1	142	PLUG CONNECTOR	27261-3-1	----	1
120	PIPE UNION	AH08	11999	1	143	SO 16/4 X 80" LG CABLE	18141-147	----	1
121	REDUCING PIPE BUSHING	AP0806	15079	1	144	SOCKET CONNECTOR	27263-001	----	1

* INDICATES PARTS RECOMMENDED FOR STOCK

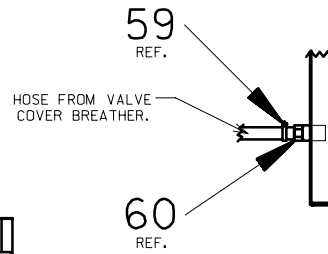
THE GORMAN-RUPP COMPANY • MANSFIELD, OHIO

GORMAN-RUPP OF CANADA LIMITED • ST. THOMAS, ONTARIO, CANADA

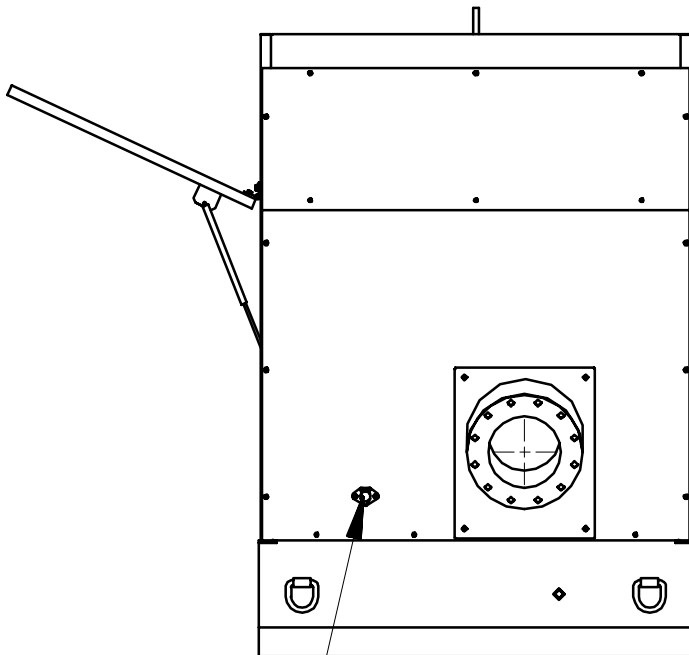
Printed in U.S.A.



SECTION B-B



SECTION E-E



147,146,145
144,143,142

THE GORMAN-RUPP COMPANY • MANSFIELD, OHIO

GORMAN-RUPP OF CANADA LIMITED • ST. THOMAS, ONTARIO, CANADA

Printed in U.S.A.

S/N 1283489 Up
PUMP ISSUE 1

PARTS LIST
PA10A60—6068T—ESP Pump Model Assembly

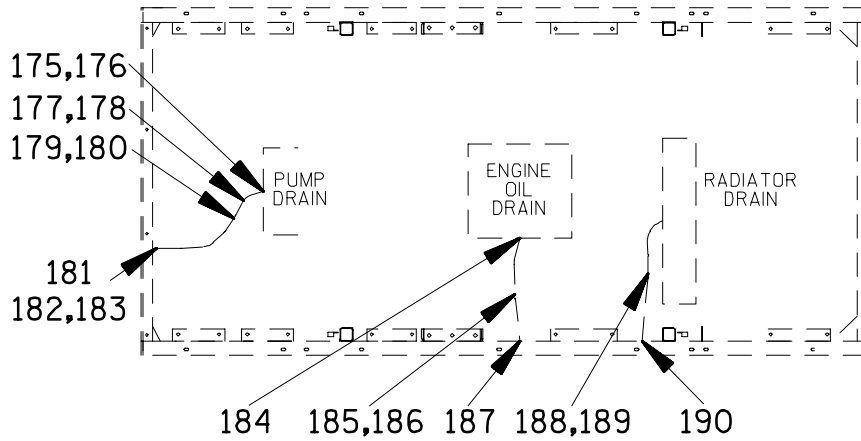
If your pump serial number is followed by an "N", your pump is **NOT** a standard production model. Contact the Gorman-Rupp Company to verify part numbers.

ITEM NO.	PART NAME	PART NUMBER	MAT'L CODE	QTY	ITEM NO.	PART NAME	PART NUMBER	MAT'L CODE	QTY
145	HEX HD CAPSCREW	B0403	15991	2	161	LOCK WASHER	J04	15991	2
146	LOCK WASHER	J04	15991	2	162	HEX NUT	D04	15991	2
147	FLAT WASHER	K04	15991	2	163	RAD O/F BOTTLE ASSY	29335—071	----	1
148	LOOSE FOAM	AS REQUIRED			164	.31" I.D. X 54" LG HOSE	18513—053	----	1
149	LOOSE FOAM	AS REQUIRED			164	CABLE CLAMP	27111—105	----	1
150	RADIATOR PANEL ASSY	42142—118	----	1	165	HOSE CLAMP	27111—105	----	1
151	HEX HD CAPSCREW	B0504	15991	6	166	TAP SCREW	21263—562	----	1
152	FLAT WASHER	K05	15991	6	167	HEX HD CAPSCREW	B0404	15991	2
153	LOCK WASHER	J05	15991	6	168	FLAT WASHER	K04	15991	2
154	LOOSE FOAM				169	LOCK WASHER	J04	15991	2
155	BRACKET	34144—044	13000	2	170	.129" LG FORM TAP	18668—003	----	1
156	HEX HD CAPSCREW	B0403	15991	2	171	MUFFLER	29334—127	----	1
157	FLAT WASHER	K04	15991	2	172	HEX HD CAPSCREW	B0606	15991	4
158	LOCK WASHER	J04	15991	2	173	FLAT WASHER	K06	15991	4
159	HEX HD CAPSCREW	B0403	15991	2	174	LOCK WASHER	J06	15991	4
160	FLAT WASHER	K04	15991	4					

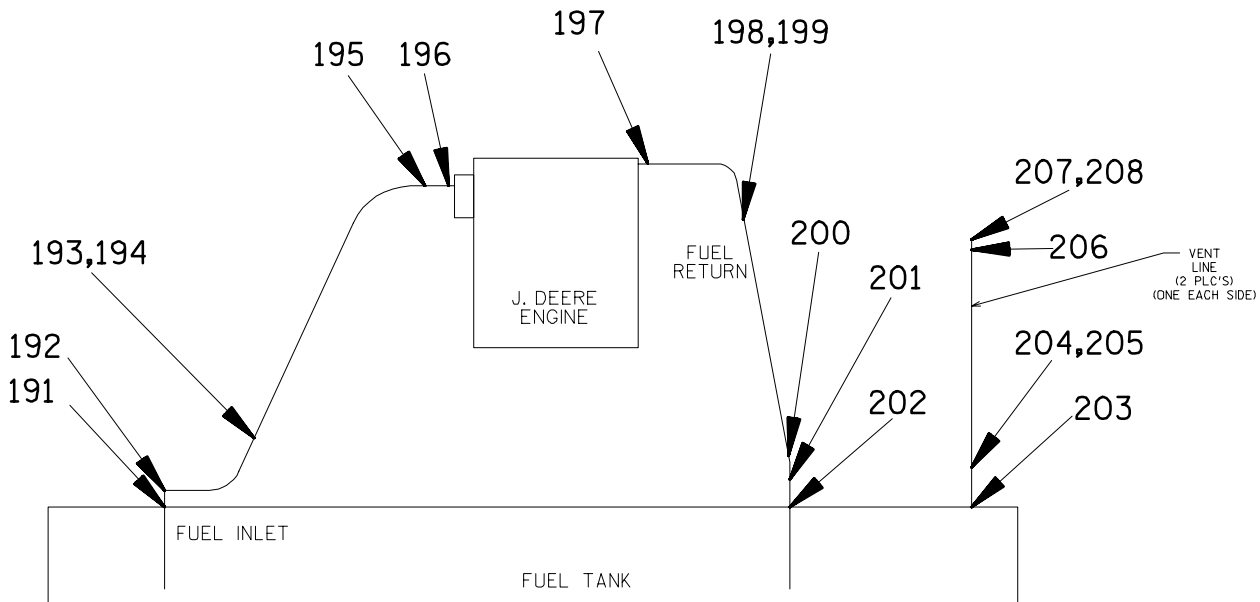
* INDICATES PARTS RECOMMENDED FOR STOCK

THE GORMAN-RUPP COMPANY • MANSFIELD, OHIO

GORMAN-RUPP OF CANADA LIMITED • ST. THOMAS, ONTARIO, CANADA Printed in U.S.A.



DRAIN LINES



FUEL LINE ASSEMBLY

THE GORMAN-RUPP COMPANY • MANSFIELD, OHIO

GORMAN-RUPP OF CANADA LIMITED • ST. THOMAS, ONTARIO, CANADA

Printed in U.S.A.

S/N 1283489 Up
PUMP ISSUE 1

PARTS LIST
PA10A60-6068T-ESP Pump Model Assembly

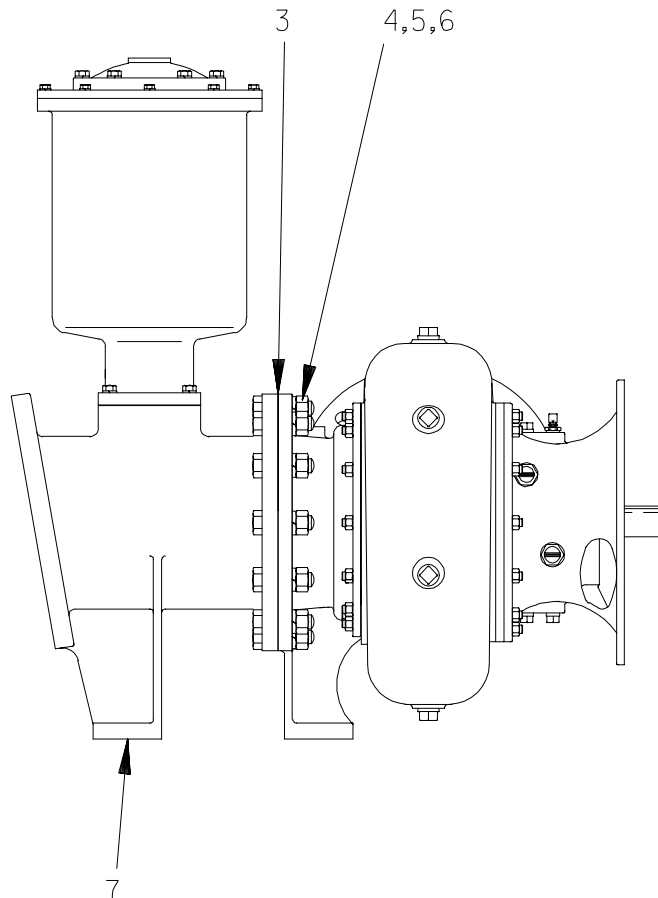
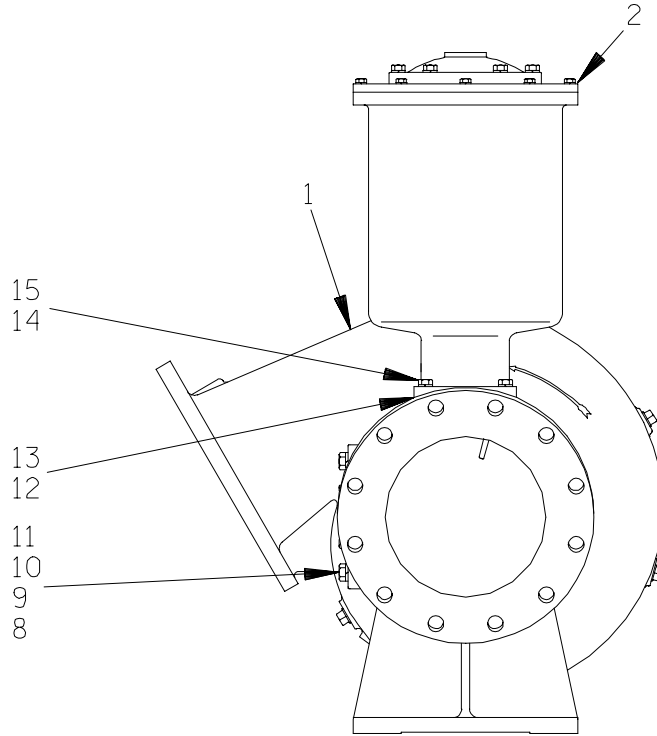
If your pump serial number is followed by an "N", your pump is **NOT** a standard production model. Contact the Gorman-Rupp Company to verify part numbers.

ITEM NO.	PART NAME	PART NUMBER	MAT'L CODE	QTY	ITEM NO.	PART NAME	PART NUMBER	MAT'L CODE	QTY
175	STREET ELBOW	RS16	11999	1	206	CABLE CLAMP	27111-105	----	2
176	PIPE NIPPLE	T16	15079	1	207	POP RIVET WASHER	21168-105	----	2
177	BALL VALVE	26631-024	----	1	208	POP RIVET	21122-058	----	2
178	HOSE FITTING	26523-394	----	1	NOT SHOWN:				
179	HOSE CLAMP	26518-667	----	2		WARNING DECAL	38816-319	----	2
180	1" I.D. X 25" LG HOSE	18513-045	----	1		PUMP DRAIN LABEL	38816-320	----	1
181	HOSE FITTING	26523-394	----	1		FUEL TANK DRAIN LABEL	38816-321	----	1
182	PIPE ELBOW	R16	15079	1		RADIATOR DRAIN LABEL	38816-322	----	1
183	PIPE NIPPLE	T1608	15079	1		OIL DRAIN LABEL	38816-322	----	1
184	STREET ELBOW	RS08	11999	1		WARNING DECAL	38816-330	----	2
185	HOSE CLAMP	26518-666	----	2		LEVEL CONTROL LABEL	38816-332	----	1
186	.5" I.D. X 12" LG HOSE	18513-113	----	1		WARNING DECAL	38816-218	----	2
187	MALE HOSE END	26525-020	----	2		ENG STARTUP TAG	38816-269	----	1
188	HOSE CLAMP	26518-642	----	2		INSTR TAG	38817-085	----	1
189	.38" I.D. X 24" LG HOSE	18513-302	----	2		WARNING DECAL	2613FE	----	1
190	MALE HOSE FITTING	26523-335	----	1		CAUTION DECAL	2613FJ	----	1
191	FUEL PICKUP	29332-143	----	1		SUCTION STICKER	6588AG	----	1
192	MALE ELBOW	26351-131	----	1		DISCHARGE STICKER	6588BJ	----	1
193	HOSE END	26523-015	----	1		DECAL KIT	48154-806	----	1
194	.38" I.D. X 56" LG HOSE	18513-302	----	1		G-R DECAL	GR-06	----	1
195	HOSE END	26523-015	----	1		LUBE DECAL	11421A	----	2
196	MALE CONNECTOR	S1447	----	1		OIL LEVEL STICKER	38816-123	----	2
197	HOSE BARB FITTING	26523-386	----	1		STRAINER	46641-011	24150	1
198	HOSE CLAMP	26518-641	----	2		FLOAT SWITCH KIT	48312-980	----	1
199	.19" I.D. X 48" LG HOSE	18513-301	----	1		BATTERY TAG	38818-506	----	1
200	HOSE BARB FITTING	26523-386	----	1		PRIME AIRE DECAL	38812-078	----	2
201	STREET ELBOW	RS04	14000	1		WARNING DECAL	38816-203	----	1
202	REDUCING BUSHING	AP0604	14100	1	OPTIONAL:				
203	HOSE FITTING	26523-335	----	2		DRY CHARGE BATTERY	29331-506	----	1
204	.38" I.D. X 42" LG HOSE	18513-302	----	1		WET CHARGE BATTERY	29331-526	----	1
205	.38" I.D. X 42" LG HOSE	18513-302	----	1		DOUBLE FLOAT SW KIT	48312-981	----	1

* INDICATES PARTS RECOMMENDED FOR STOCK

THE GORMAN-RUPP COMPANY • MANSFIELD, OHIO

GORMAN-RUPP OF CANADA LIMITED • ST. THOMAS, ONTARIO, CANADA Printed in U.S.A.



THE GORMAN-RUPP COMPANY • MANSFIELD, OHIO

GORMAN-RUPP OF CANADA LIMITED • ST. THOMAS, ONTARIO, CANADA

Printed in U.S.A.

S/N 1283489 Up
PUMP ISSUE 1

PARTS LIST
PA10A60—(SAE 3/11.5) SU Pump Assembly

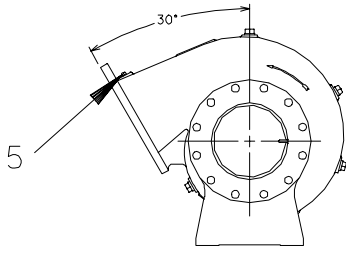
ITEM NO.	PART NAME	PART NUMBER	MAT'L CODE	QTY
1	PUMP END ASSY	610N60—(SAE3/11.5)		1
2	PRIMING CHAMBER ASSY	46112—707	---	1
3	GASKET	25113—040	---	1
4	HEX HD CAPSCREW	B1414	15991	12
5	HEX NUT	D14	15991	12
6	LOCK WASHER	J14	15991	12
7	SUCTION SPOOL	38642—615	10000	1
8	BLIND FLANGE ASSY	42111—358	---	1
9	BLIND FLANGE GASKET	25113—034	---	1
10	HEX HD CAPSCREW	B1007	15991	8
11	LOCK WASHER	J10	15991	8
12	PRIMING CHAMBER GASKET	38687—053	19060	1
13	PRIMING CHAMBER BAFFLE	31113—011	17000	1
14	HEX HD CAPSCREW	B0807	15991	4
15	LOCK WASHER	J08	15991	4

* INDICATES PARTS RECOMMENDED FOR STOCK

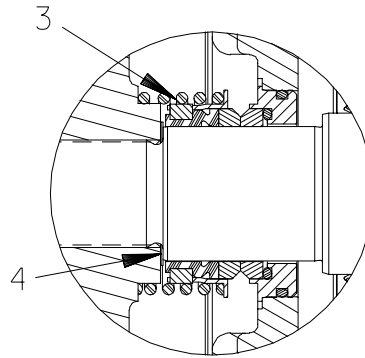
THE GORMAN-RUPP COMPANY • MANSFIELD, OHIO

GORMAN-RUPP OF CANADA LIMITED • ST. THOMAS, ONTARIO, CANADA

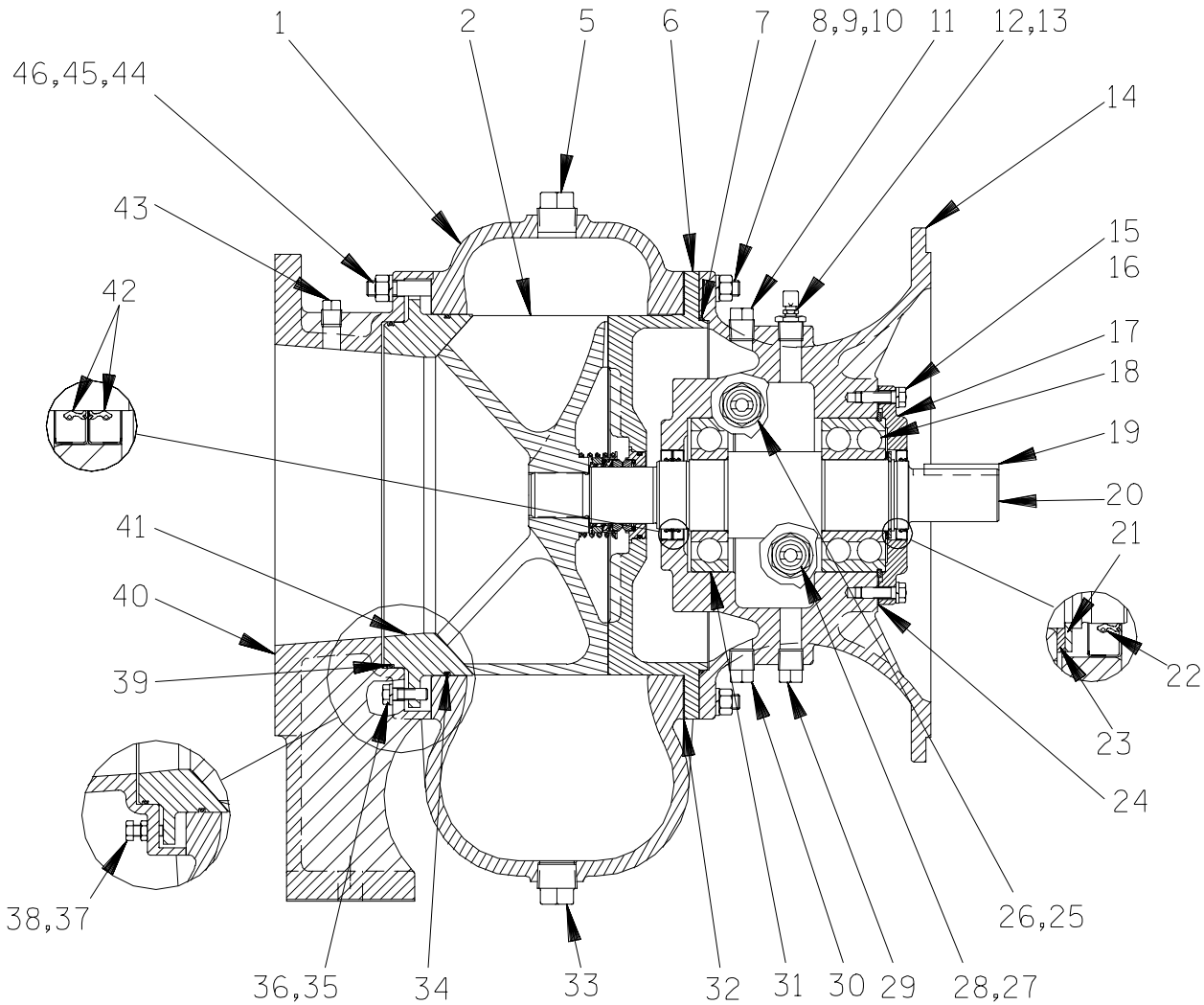
Printed in U.S.A.



VOLUTE ORIENTATION
AS VIEWED FROM SUCTION
PORT.



SEAL AREA DETAIL



THE GORMAN-RUPP COMPANY • MANSFIELD, OHIO

GORMAN-RUPP OF CANADA LIMITED • ST. THOMAS, ONTARIO, CANADA

Printed in U.S.A.

S/N 1283489 Up
PUMP ISSUE 1

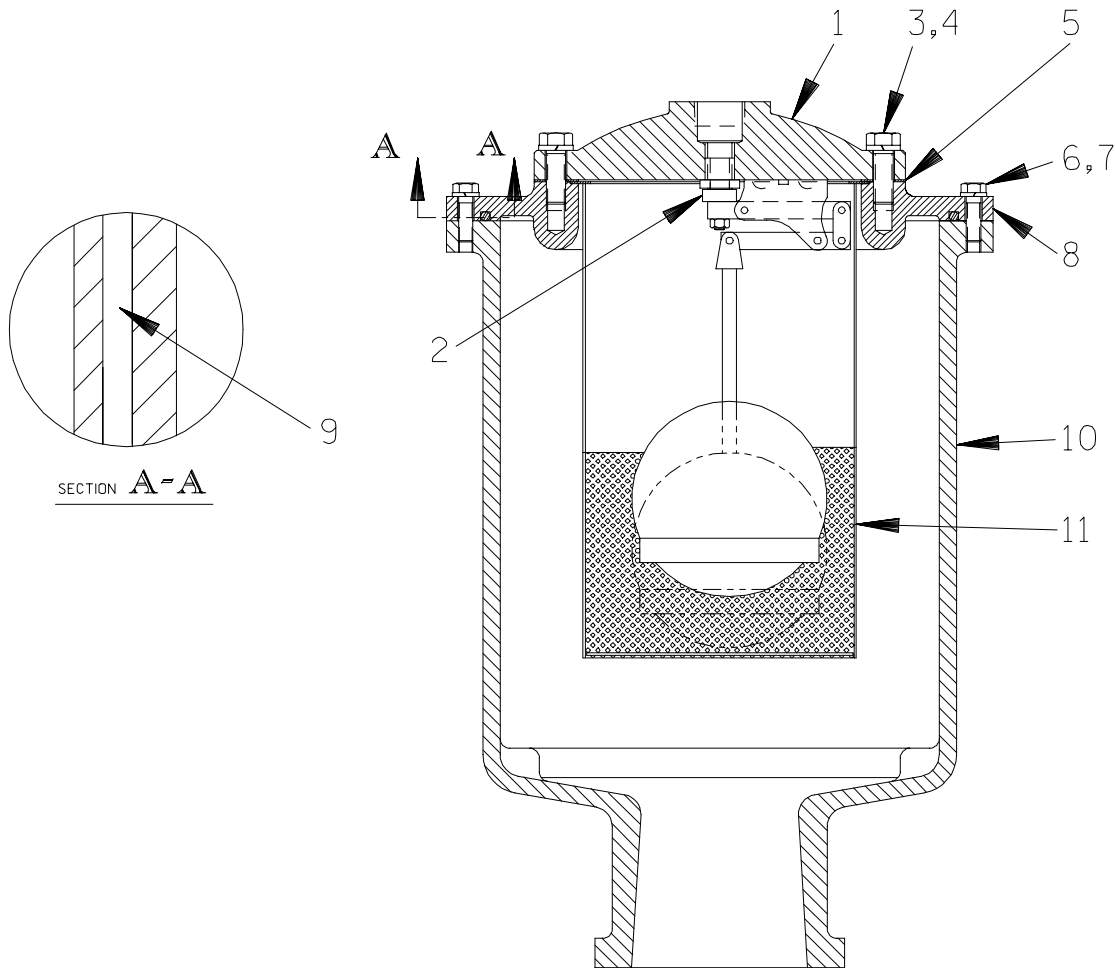
PARTS LIST
610N60-(SAE 3/11.5) Pump End Assembly

ITEM NO.	PART NAME	PART NUMBER	MAT'L CODE	QTY	ITEM NO.	PART NAME	PART NUMBER	MAT'L CODE	QTY
1	PUMP CASING	3197	10010	1	31 *	BALL BEARING	S1911	---	1
2 *	IMPELLER	38615-091	11010	1	32 *	SEAL PLATE GSKT	3200G	18000	1
3 *	SEAL ASSY	46512-048	---	1	33	CASING DRAIN PLUG	P16	10009	5
4	IMP ADJ SHIM SET	5091	17090	1	34 *	WEAR RING O-RING	25152-277	---	1
5	PIPE PLUG	P04	10009	1	35	HEX HD CAPSCREW	B0605	15991	4
6	SEAL PLATE	38272-716	10000	1	36	LOCKWASHER	J06	15991	4
7 *	CASING O-RING	25152-276	---	1	37	HEX HD CAPSCREW	B0604	15991	4
8	STUD	C0810	15991	12	38	JAM NUT	AT06	15991	4
9	HEX NUT	D08	15991	12	39 *	WEAR RING O-RING	25152-276	---	1
10	LOCKWASHER	J08	15991	12	40	SUCTION HEAD	38248-506	10000	1
11	VENTED PLUG	4823A	15079	1	41 *	WEAR RING	38691-634	11010	1
12	RED PIPE BUSHING	AP0802	15079	1	42 *	OIL SEAL	25258-725	---	2
13	AIR VENT	S1530	---	1	43	PIPE PLUG	P06	15079	1
14	INTERMEDIATE	38264-705	10000	1	44	STUD	C0811	15991	12
15	HEX HD CAPSCREW	B0605	15991	6	45	HEX NUT	D08	15991	12
16	LOCKWASHER	J06	15991	6	46	LOCKWASHER	J08	15991	12
17	BEARING COVER	38322-432	10000	1					
18 *	BALL BEARING	23422-413	---	1	NOT SHOWN:				
19 *	SHAFT KEY	N0610	15990	1		LUBE DECAL	11421A	---	1
20 *	IMPELLER SHAFT	38512-524	1706H	1		SUCTION DECAL	6588AG	---	1
21	RETAINING RING	24124-052	---	1		DISCHARGE STICKER	6588BJ	---	1
22 *	OIL SEAL	25258-725	---	1		NAME PLATE	38818-127	13000	1
23	THRUST WASHER	31134-114	15000	1		DRIVE SCREW	BM#04-03	17000	4
24 *	BRG COVER GASKET	38683-475	18000	1		INTER GUARD	42381-031	24152	2
25	SIGHT GAUGE	S1471	---	1		DRIVE ASSY	44162-157	---	1
26	PIPE PLUG	P12	15079	1		HEX HX CAPSCREW	B0604	15991	2
27	SIGHT GAUGE	S1471	---	1		PIPE PLUG	P04	15079	1
28	PIPE PLUG	P12	15079	1	OPTIONAL:				
29	BRG CVTY DRAIN PLUG	P08	15079	1		ADI IMPELLER	38615-091	1102H	1
30	SEAL CVTY DRAIN PLUG	P08	15079	1					

* INDICATES PARTS RECOMMENDED FOR STOCK

THE GORMAN-RUPP COMPANY • MANSFIELD, OHIO

GORMAN-RUPP OF CANADA LIMITED • ST. THOMAS, ONTARIO, CANADA Printed in U.S.A.



PARTS LIST
46112-707 Priming Chamber Assembly

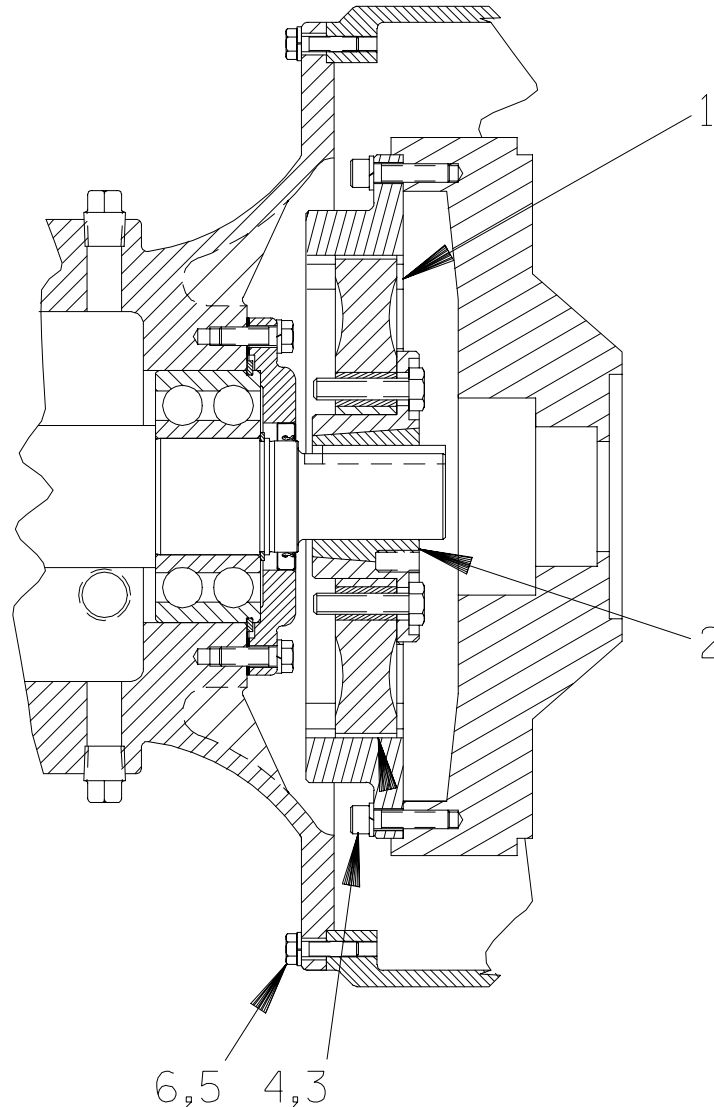
ITEM NO.	PART NAME	PART NUMBER	MAT'L CODE	QTY
1	PRIMING VALVE	26664-007	---	1
2	-ORIFICE BUTTON	26688-021	---	1
3	HEX HD CAPSCREW	B0806	15991	8
4	LOCK WASHER	J08	15991	8
5	PRIMING VALVE GASKET	38683-657	19060	1
6	HEX HD CAPSCREW	B0605	15991	12
7	LOCK WASHER	J06	15991	12
8	PRIMING CHAMBER LID	38346-618	10000	1
9	.25 DIA. X 46.3 FT. LG LINEAR O-RING	18512-056	---	1
10	PRIMING CHAMBER	38343-018	10000	1
11	STRAINER ASSY	46641-222	17000	1

* INDICATES PARTS RECOMMENDED FOR STOCK

THE GORMAN-RUPP COMPANY • MANSFIELD, OHIO

GORMAN-RUPP OF CANADA LIMITED • ST. THOMAS, ONTARIO, CANADA

Printed in U.S.A.



PARTS LIST

Drive Assembly

ITEM NO.	PART NAME	PART NUMBER	MAT'L CODE	QTY
1	COUPLING W/O BUSHING	24391-102	---	1
2	BUSHING	24131-497	---	1
3	SOCKET HD CAPSCREW	BD0606	15990	8
4	LOCKWASHER	J06	15991	8
5	HEX HD CAPSCREW	B0605	15991	12
6	LOCKWASHER	J06	15991	12

* INDICATES PARTS RECOMMENDED FOR STOCK

THE GORMAN-RUPP COMPANY • MANSFIELD, OHIO

GORMAN-RUPP OF CANADA LIMITED • ST. THOMAS, ONTARIO, CANADA

Printed in U.S.A.

**For U.S. and International Warranty Information,
Please Visit www.grpumps.com/warranty
or call:
U.S.: 419-755-1280
International: +1-419-755-1352**

**For Canadian Warranty Information,
Please Visit www.grcanada.com/warranty
or call:
519-631-2870**