



PRIME-AIRE[™] SERIES
PUMP MODEL
PA6C60 – 4045D – ESP

MANUAL
PART 2 of 3

PARTS
LIST
WITH
PERFORMANCE CURVE

THE GORMAN-RUPP COMPANY • MANSFIELD, OHIO

GORMAN-RUPP OF CANADA LIMITED • ST. THOMAS, ONTARIO, CANADA Printed in U.S.A.

www.gormanrupp.com

©Copyright by the Gorman-Rupp Company



The engine exhaust from this product contains chemicals known to the State of California to cause cancer, birth defects or other reproductive harm.

PERFORMANCE CURVE – SECTION A

RECORDING MODEL AND SERIAL NUMBERS

Please record the pump model and serial number in the spaces provided below and in the separate Installation/Operation Manual accompanying your pump. Your Gorman-Rupp distributor needs this information when you require parts or service.

Pump Model: _____

Serial Number: _____

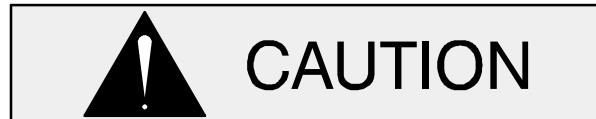
WARRANTY INFORMATION

The pump warranty is provided as part of Gorman-Rupp's support program for customers who operate and maintain their equipment as described in this manual and other accompanying literature. Please note that should the equipment be abused or modified to change its performance beyond the original factory specifications, the warranty will become void and any claim will be denied.

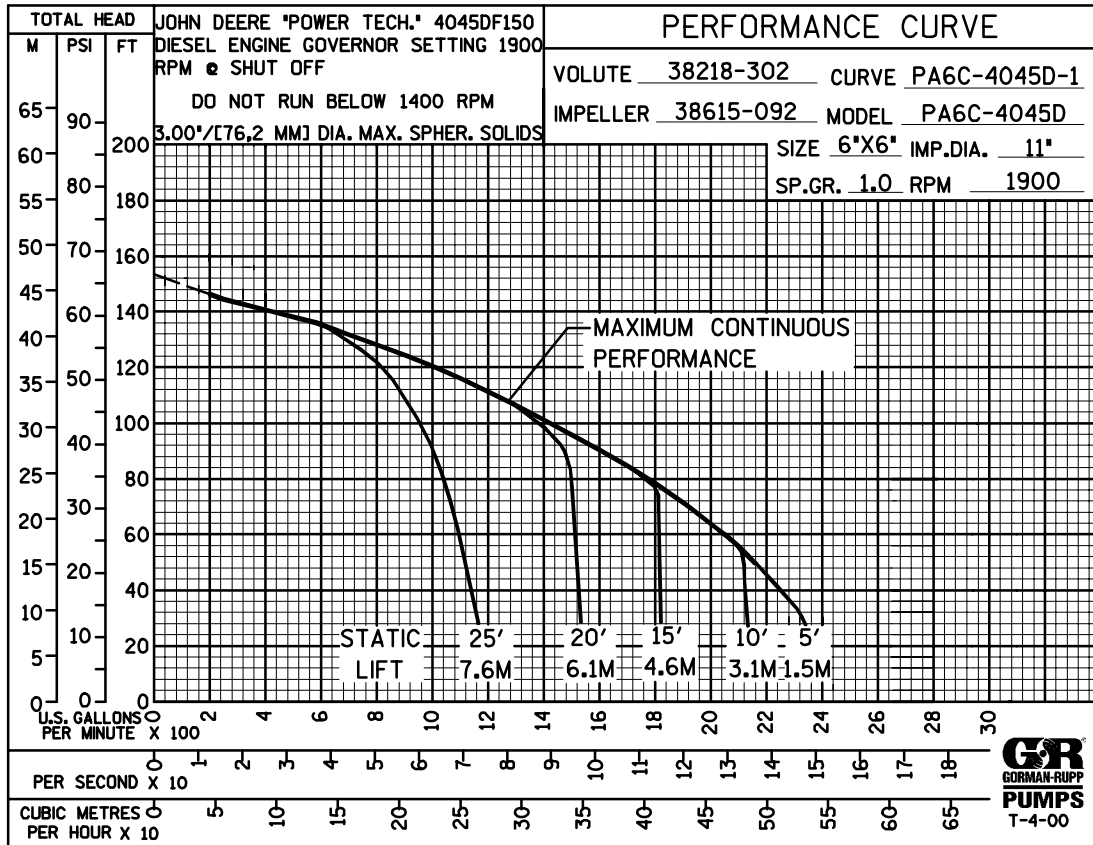
PERFORMANCE CURVE

The performance curve on the following page is based on 70° F (21° C) clear water at sea level, with minimum suction lift. Since pump installations are seldom identical, your performance may be different due to such factors as viscosity, specific gravity, elevation, temperature, and impeller trim.

If your pump serial number is followed by an "N", your pump is **NOT** a standard production model. Contact the Gorman-Rupp Company to verify performance or part numbers.

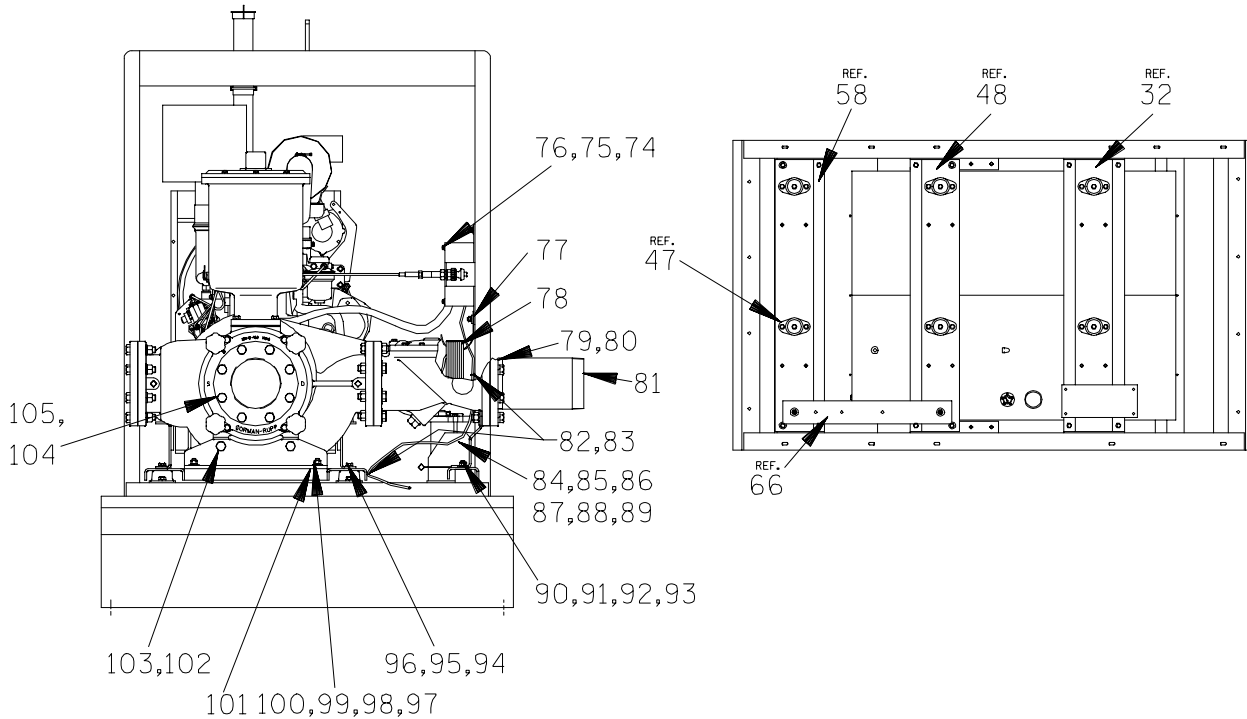
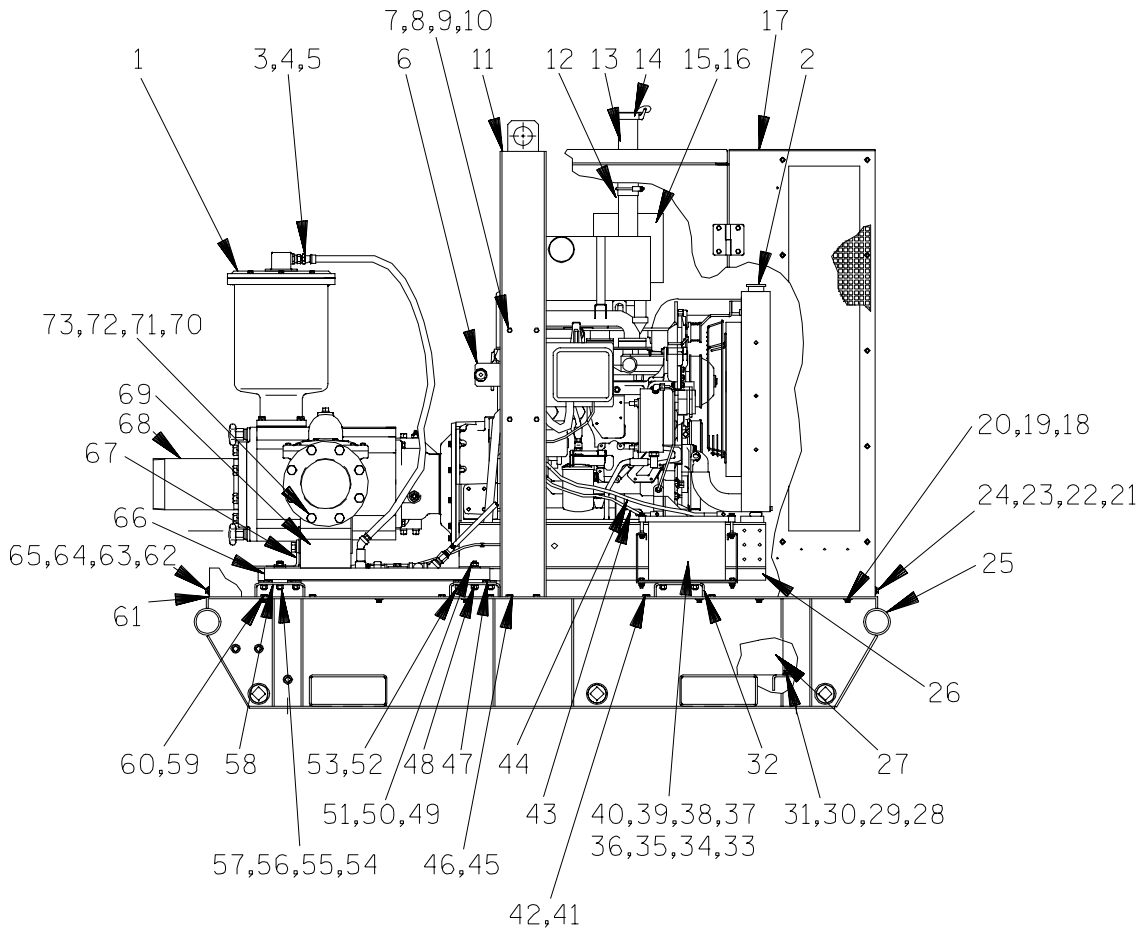


Pump speed and operating condition points must be within the continuous performance range shown on the curve.



Performance Curve – Model PA6C60–4045D–ESP

This Page Intentionally Blank



THE GORMAN-RUPP COMPANY • MANSFIELD, OHIO

GORMAN-RUPP OF CANADA LIMITED • ST. THOMAS, ONTARIO, CANADA

Printed in U.S.A.

May 22, 2003

©Copyright by the Gorman-Rupp Company

1 of 14

Page 64.6 C11.5

S/N 1263840 Up
PUMP ISSUE 1

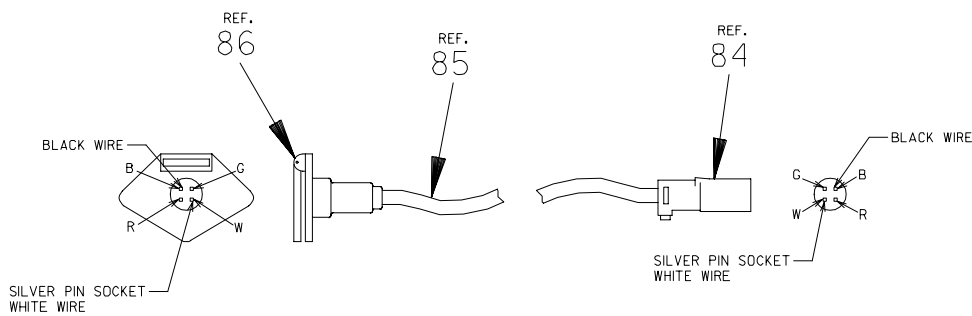
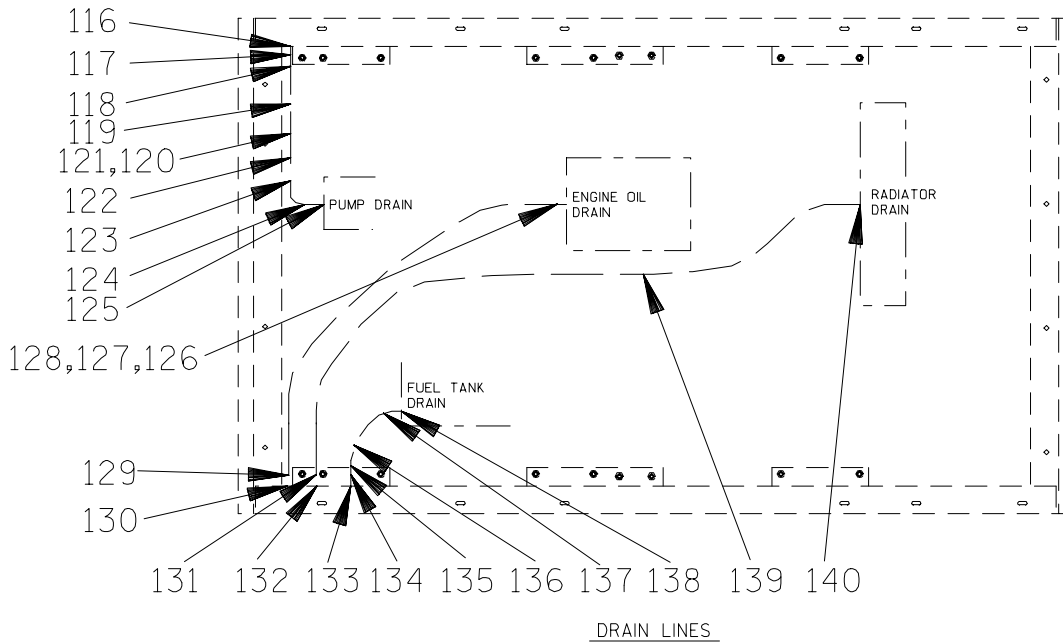
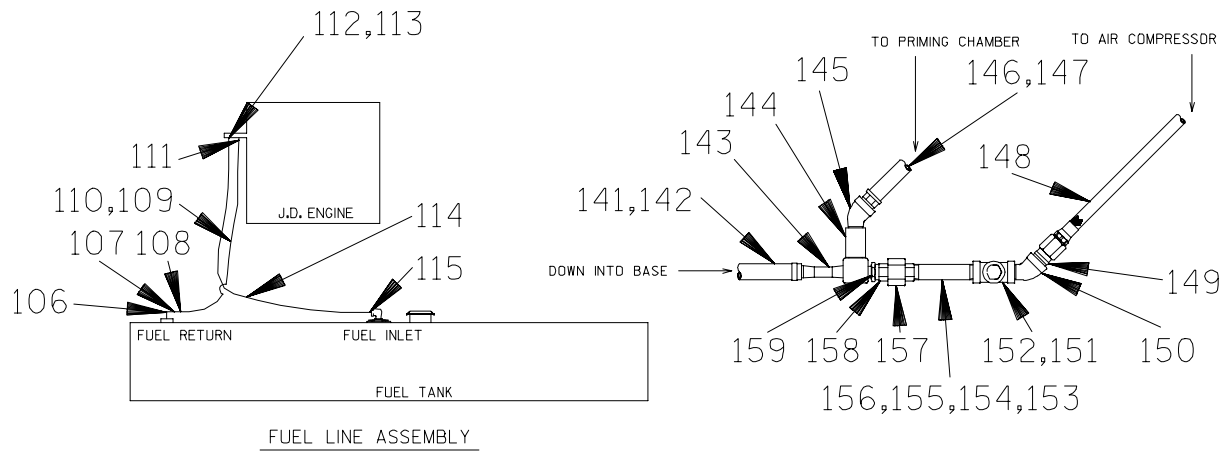
PARTS LIST
Pump Model PA6C60-4045D-ESP

If your pump serial number is followed by an "N", your pump is **NOT** a standard production model. Contact the Gorman-Rupp Company to verify part numbers.

ITEM NO.	PART NAME	PART NUMBER	MAT'L CODE	QTY	ITEM NO.	PART NAME	PART NUMBER	MAT'L CODE	QTY
1	PUMP END ASSEMBLY	46133-967	---	1	54	STUD MOUNT	24631-011	---	2
2	JOHN DEERE 4045D	29224-128	---	1	55	LOCK WASHER	J08	15991	4
3	REDUCER BUSHING	AP1608	11999	1	56	FLAT WASHER	K08	15991	2
4	CONNECTOR	S1598	---	1	57	HEX NUT	D08	15991	4
5	HOSE BARB FTG	26523-047	---	1	58	CROSS RAIL ASSY	41581-028	24150	1
6	MOUNTING BRACKET	34621-293	13000	1	59	HEX HD CAPSCREW	B0805	15991	4
7	HEX HD CAPSCREW	B0605	15991	4	60	LOCK WASHER	J08	15991	4
8	LOCK WASHER	J06	15991	4	61	FOAM TAPE	18668-003	---	23.2'
9	FLAT WASHER	K06	15991	4	62	HEX HD CAPSCREW	B0504	15991	3
10	HEX NUT	D06	15991	4	63	FLAT WASHER	K05	15991	3
11	HOISTING BAIL ASSY	44713-036	24150	1	64	LOCK WASHER	J05	15991	3
12	MUFFLER CLAMP	S1980	---	1	65	MOUNTING ASSEMBLY	41881-788	---	1
13	EXHAUST EXTENSION	31615-036	15210	1	66	CROSS RAIL	34414-098	15080	1
14	WEATHER CAP	S1710	---	1	67	PUMP SUPPORT	34265-040	15080	1
15	EXHAUST SILENCER	29334-128	---	1	68	PIPE NIPPLE	T9648	15070	1
16	EXHAUST BLANKET	29334-293	---	1	69	C.V. SUPPORT	34561-009	15080	1
17	ENCLOSURE ASSY	42164-008	---	1	70	HEX HD CAPSCREW	B1214	15991	8
18	HEX HD CAPSCREW	B0505	15991	20	71	LOCK WASHER	K12	15991	8
19	FLAT WASHER	K05	15991	20	72	FLAT WASHER	J12	15991	2
20	LOCK WASHER	J05	15991	20	73	HEX NUT	D12	15991	8
21	HEX HD CAPSCREW	B0504	15991	5	74	HEX HD CAPSCREW	B0403	15991	4
22	FLAT WASHER	K05	15991	5	75	FLAT WASHER	K04	15991	4
23	LOCK WASHER	J05	15991	5	76	LOCK WASHER	J04	15991	4
24	MOUNTING ASSEMBLY	41881-789	---	1	77	BRACKET	34184-007	15120	1
25	BASE ASSEMBLY	41565-587	24150	1	78	FLOAT SWITCH KIT	48312-980	---	1
26	BASE FRAME	41437-064	24150	1	79	FLANGE	1758	10010	2
27	FUEL TANK ASSY	46711-092	24150	1	80	FLANGE GASKET	25113-036	---	2
28	FLAT WASHER	K07	15991	6	81	PIPE NIPPLE	T9648	15070	1
29	LOCK WASHER	J06	15991	6	82	CABLE TIE MTG BLOCK	27111-352	---	2
30	HEX NUT	D06	15991	6	83	CABLE TIE	27111-205	---	2
31	FOAM TAPE	18668-003	---	14.01'	84	PLUG CONNECTION	27261-301	---	1
32	CROSS RAIL ASSY	41581-026	24150	1	85	CABLE SJD	18134-273	---	6.68'
33	HEX HD CAPSCREW	B0612	15991	2	86	SOCKET CONNECTOR	27263-001	---	1
34	FLAT WASHER	K06	15991	2	87	HEX HD CAPSCREW	B0404	15991	2
35	FLANGED HEX NUT	21765-314	---	2	88	LOCK WASHER	J04	15991	2
36	BATTERY FRAME	8355B	24000	1	89	FLAT WASHER	K04	15991	2
37	12V BATTERY	SEE OPTIONS		1	90	HEX HD CAPSCREW	B0806	15991	2
38	BATTERY BOX	34751-006	15120	1	91	LOCK WASHER	K08	15991	2
39	HEX HD CAPSCREW	B0604	15991	4	92	FLAT WASHER	J08	15991	2
40	FLANGED HEX NUT	21765-314	---	4	93	HEX NUT	D08	15991	2
41	HEX HD CAPSCREW	B0805	15991	4	94	HEX HD CAPSCREW	B0804	15991	6
42	LOCK WASHER	J08	15991	4	95	LOCK WASHER	J08	15991	6
43	POS BATTERY CABLE	47311-111	---	1	96	FLAT WASHER	K08	15991	6
44	NEG BATTERY CABLE	47311-189	---	1	97	HEX HD CAPSCREW	B0806	15991	2
45	HEX HD CAPSCREW	B0805	15991	4	98	LOCK WASHER	J08	15991	2
46	LOCK WASHER	J08	15991	4	99	FLAT WASHER	K08	15991	2
47	COMPRESSION MOUNT	24631-104	---	6	100	HEX NUT	D08	15991	2
48	CROSS RAIL ASSY	41581-027	24150	1	101	SHIM SET	48261-045	---	4
49	HEX NUT	D08	15991	4	102	HEX HD CAPSCREW	B1206	15991	2
50	LOCK WASHER	J08	15991	4	103	LOCK WASHER	J12	15991	2
51	FLAT WASHER	K08	15991	4	104	HEX HD CAPSCREW	B1209	15991	8
52	HEX HD CAPSCREW	B0805	15991	4	105	LOCK WASHER	J12	15991	8
53	LOCK WASHER	J08	15991	4					

THE GORMAN-RUPP COMPANY • MANSFIELD, OHIO

GORMAN-RUPP OF CANADA LIMITED • ST. THOMAS, ONTARIO, CANADA Printed in U.S.A.



THE GORMAN-RUPP COMPANY • MANSFIELD, OHIO

GORMAN-RUPP OF CANADA LIMITED • ST. THOMAS, ONTARIO, CANADA

Printed in U.S.A.

May 22, 2003

©Copyright by the Gorman-Rupp Company

3 of 14

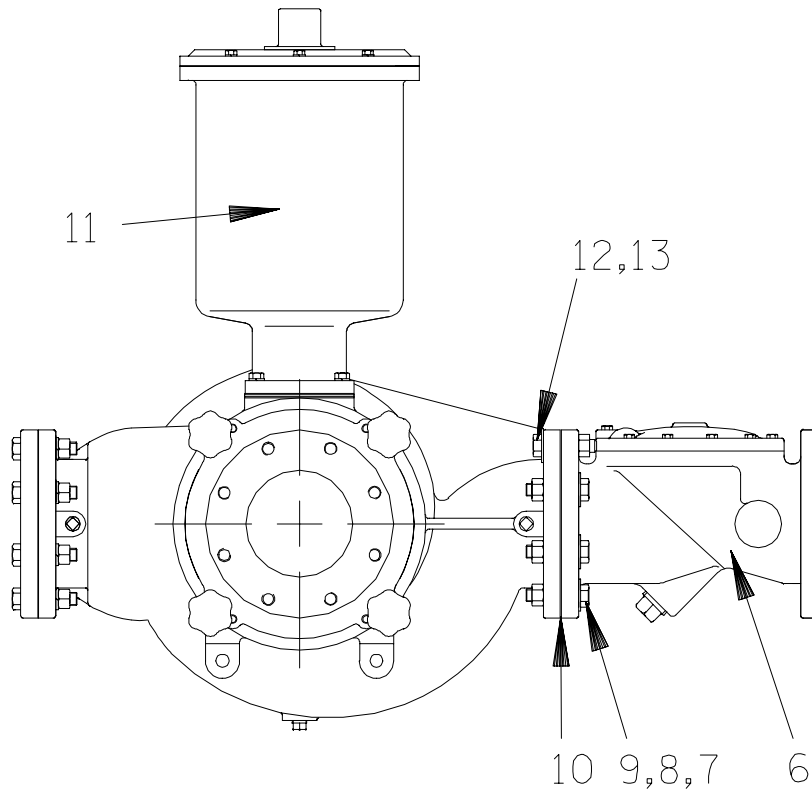
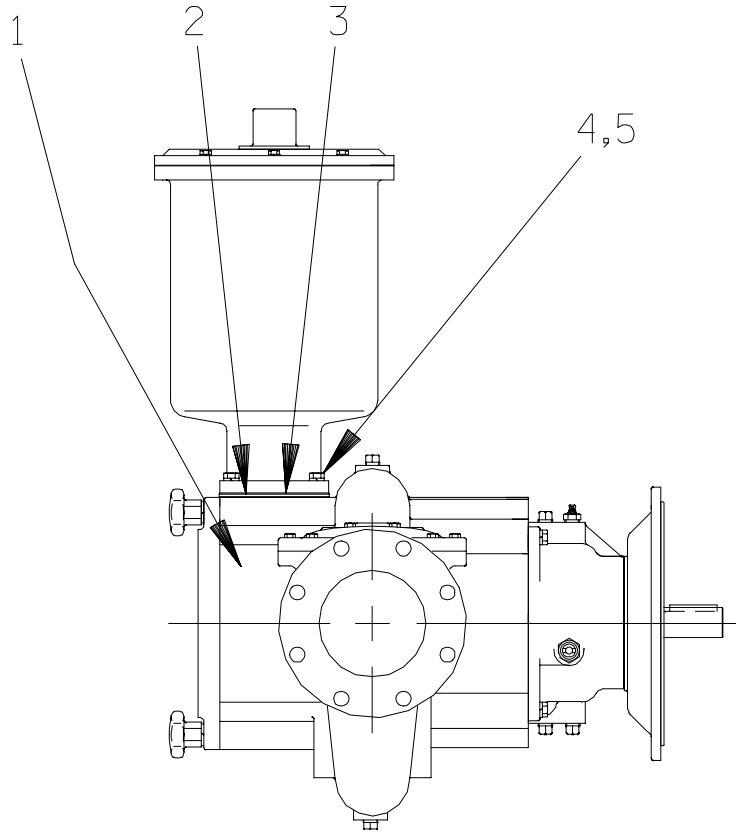
Page 64.6 C11.5

S/N 1263840 Up
PUMP ISSUE 1

PARTS LIST
Pump Model PA6C60-4045D-ESP

ITEM NO.	PART NAME	PART NUMBER	MAT'L CODE	QTY	ITEM NO.	PART NAME	PART NUMBER	MAT'L CODE	QTY
106	STREET ELBOW	RS06	11999	1	146	MALE HOSE END	26525-020	----	1
107	REDUCER BUSHING	AP0604	15079	1	147	HOSE	18513-113	----	4.68'
108	HOSE BARB FITTING	26523-386	----	1	148	HOSE ASSY	46341-422	----	1
109	HOSE	18513-301	----	4.59'	149	MALE ADAPTOR	26351-065	----	2
110	HOSE CLAMP	26518-641	----	2	150	STREET ELBOW	AGS08	11999	1
111	HOSE BARB FITTING	26523-386	----	1	151	1/2 TEE	U08	11999	1
112	CONNECTOR	S1447	----	1	152	PRESS RELIEF VALVE	26662-028	----	1
113	HOSE END	26523-015	----	1	153	BRACKET ASSY	41881-706	24150	1
114	HOSE	18513-054	----	3.59'	154	HEX HD CAPSCREW	B0805	15991	1
115	HOSE BARB MALE	26523-333	----	1	155	LOCK WASHER	J08	15991	1
116	BUSHING	AP2016	17040	1	156	FLAT WASHER	K08	15991	1
117	HOSE FITTING	26523-394	----	1	157	HEX NUT	D08	15991	1
118	HOSE CLAMP	26518-666	----	2	158	PIPE UNION	AH08	11999	1
119	HOSE	18513-045	----	2.18'	159	REDUCER BUSHING	AP0806	15079	1
120	HOSE FITTING	26523-394	----	1					
121	BALL VALVE	26631-025	----	1		NOT SHOWN:			
122	PIPE NIPPLE	T16	15079	1		WARNING DECAL	38816-319	----	2
123	90° ELBOW	R16	15079	1		PUMP DRAIN LABEL	38816-320	----	1
124	PIPE NIPPLE	T1608	15079	1		FUEL TANK DRAIN LABEL	38816-321	----	1
125	BUSHING	AP2016	17040	1		RADIATOR DRAIN LABEL	38816-322	----	1
126	HOSE BARB FITTING	26523-456	----	1		OIL DRAIN LABEL	38816-323	----	1
127	HOSE CLAMP	26518-641	----	1		LEVEL CONTROL LABEL	38816-332	----	1
128	HOSE	18513-056	----	5.59'		WARNING DECAL	38816-330	----	2
129	HOSE CLAMP	26518-641	----	1		WARNING DECAL	38816-218	----	2
130	HOSE BARB FITTING	26523-456	----	1		ENG START-UP TAG	38816-269	----	1
131	HOSE CLAMP	26518-641	----	1		INSTRUCTION TAG	38817-009	----	1
132	HOSE FITTING	26523-335	----	1		WARNING DECAL	2613FE	----	2
133	PIPE NIPPLE	T08	15079	1		CAUTION DECAL	2613FJ	----	1
134	BALL VALVE	26631-023	----	1		SUCTION STICKER	6588AG	----	1
135	HOSE BARB FITTING	26523-456	----	1		DISCHARGE STICKER	6588BJ	----	1
136	HOSE	18513-056	----	2.01'		DECAL KIT	48154-805	----	1
137	HOSE CLAMP	26518-641	----	2		- SILENT PUMP			
138	HOSE BARB FITTING	26523-456	----	1		LUBE DECAL	11421A	----	2
139	HOSE	18513-054	----	8.59'		WARNING DECAL	38816-203	----	2
140	HOSE CLAMP	26518-641	----	1		BATTERY TAG	38818-506	----	1
141	HOSE	18513-115	----	2.01'		STRAINER	7823A	24000	1
142	HOSE CLAMP	26518-666	----	1					
143	VENTURI	26817-002	----	1		OPTIONS:			
144	PIPE COUPLING	AE08	15079	1		12V BATTERY	29331-515	----	1
145	STREET ELBOW	AGS08	11999	1					

* INDICATES PARTS RECOMMENDED FOR STOCK



THE GORMAN-RUPP COMPANY • MANSFIELD, OHIO

GORMAN-RUPP OF CANADA LIMITED • ST. THOMAS, ONTARIO, CANADA

Printed in U.S.A.

May 22, 2003

©Copyright by the Gorman-Rupp Company

5 of 14
Page 64.6 C11.5

S/N 1263840 Up
PUMP ISSUE 1

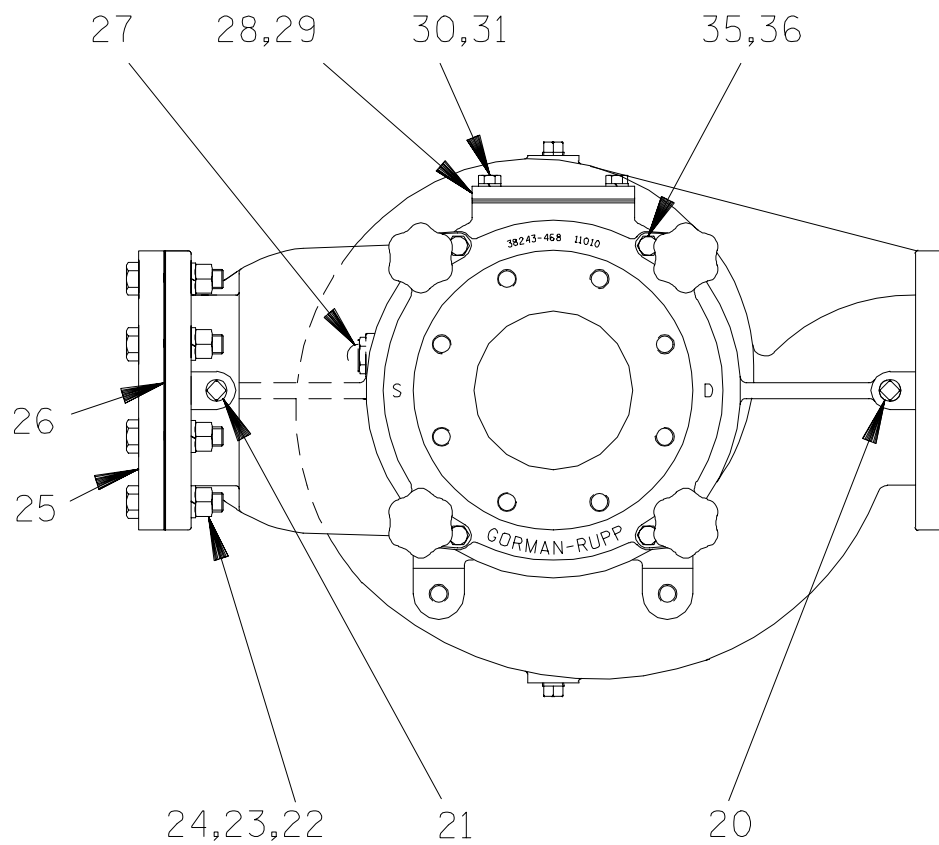
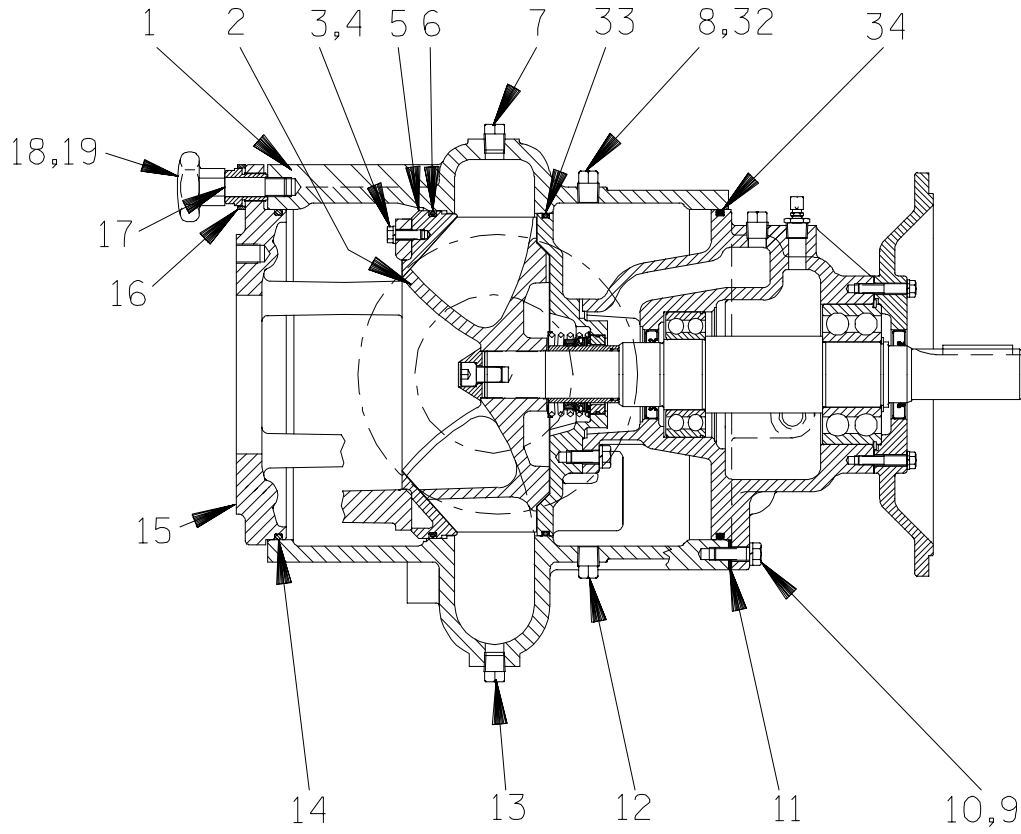
PARTS LIST
PA6C60-(SAE 4/10) Pump Assembly

ITEM NO.	PART NAME	PART NUMBER	MAT'L CODE	QTY
1	PUMP END ASSY	66F60-(SAE4/10)	---	1
2	BAFFLE	31113-011	17000	1
3	* PRIMING CHAMBER GSKT	38687-053	19060	1
4	HEX HD CAPSCREW	B0806	15991	4
5	LOCKWASHER	J08	15991	4
6	CHECK VALVE ASSY	26642-126	---	1
	-FLAPPER	26688-001	---	1
	-COVER GASKET	26688-002	---	1
7	HEX HD CAPSCREW	B1213	15991	6
8	LOCKWASHER	J12	15991	6
9	HEX NUT	D12	15991	6
10	* CASING GASKET	25113-036	---	1
11	PRIMING CHAMBER ASSY	46112-704	---	1
12	HEX HD CAPSCREW	B1212	15991	2
13	HEX NUT	D12	15991	2

* INDICATES PARTS RECOMMENDED FOR STOCK

THE GORMAN-RUPP COMPANY • MANSFIELD, OHIO

GORMAN-RUPP OF CANADA LIMITED • ST. THOMAS, ONTARIO, CANADA Printed in U.S.A.



THE GORMAN-RUPP COMPANY • MANSFIELD, OHIO

GORMAN-RUPP OF CANADA LIMITED • ST. THOMAS, ONTARIO, CANADA

Printed in U.S.A.

S/N 1263840 Up
PUMP ISSUE 1

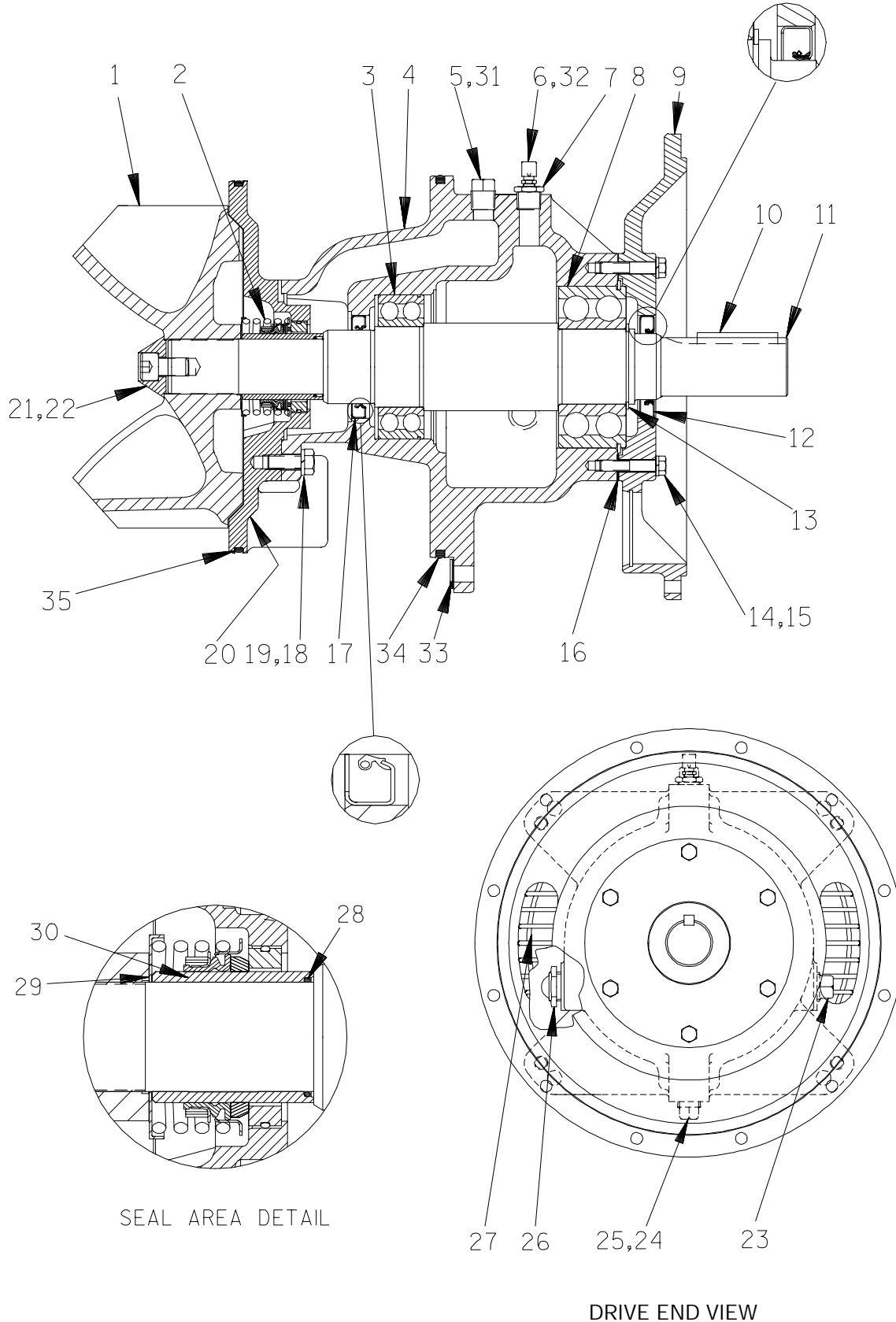
PARTS LIST
66F60-(SAE4/10) Pump End Assembly

ITEM NO.	PART NAME	PART NUMBER	MAT'L CODE	QTY	ITEM NO.	PART NAME	PART NUMBER	MAT'L CODE	QTY
1	PUMP CASING	38218-303	11010	1	25	BLIND FLANGE ASSY	42111-349	---	1
2	REPAIR ROTATING ASSY	44163-253	---	1	26 *	FLANGE GASKET	25113-036	---	1
3	HEX HD CAPSCREW	B0604 1/2	17000	4	27	SIGHT GAUGE	S1471	---	1
4	LOCKWASHER	J06	17090	4	28	COVER PLATE	33541-045	15080	1
5 *	WEAR RING	38691-864	11010	1	29 *	CVR PLATE GASKET	38687-053	19060	1
6 *	WEAR RING O-RING	25152-453	---	1	30	HEX HD CAPSCREW	B0805	15991	4
7	PIPE PLUG	P08	15079	1	31	LOCKWASHER	J08	15991	4
8	VENTED PLUG	4823A	15079	1	32	SHIPPING PLUG	11495B	15079	1
9	HEX HD CAPSCREW	B0806	15991	4	33 *	SEAL PLATE O-RING	25152-381	---	1
10	LOCKWASHER	J08	15991	4	34 *	BEARING HSG O-RING	S1676	---	1
11 *	ADJ SHIM SET	13131-3	17040	12	35	HEX HD CAPSCREW	B0804 1/2	15991	4
12	CASING DRAIN PLUG	P08	15079	1	36	LOCKWASHER	J08	15991	4
13	CASING DRAIN PLUG	P08	15079	1		NOT SHOWN:			
14 *	BACK CVR PLATE O-RING	S1676	---	1		DRIVE ASSY	44162-159	---	1
15	BACK COVER PLATE	38243-468	11010	1		PIPE PLUG	P12	15079	1
16	LOCKING COLLAR	38115-551	15001	4		OIL LEVEL DECAL	38816-123	---	1
17 *	ADJ SCREW	31871-070	1500X	4		ALTERNATE PARTS:			
18	STUD	C1213	15991	4		60 SERIES NAME PLATE	2613R	13990	1
19	HAND KNOB	38115-901	10000	4		DRIVE SCREW	BM#04-03	17000	2
20	PIPE PLUG	P08	15079	1		PA SERIES NAME PLATE	38818-127	13000	1
21	PIPE PLUG	P08	15079	1		DRIVE SCREW	BM#04-03	17000	4
22	HEX HD CAPSCREW	B1213	15991	8					
23	LOCKWASHER	J12	15991	8					
24	HEX NUT	D12	15991	8					

* INDICATES PARTS RECOMMENDED FOR STOCK

THE GORMAN-RUPP COMPANY • MANSFIELD, OHIO

GORMAN-RUPP OF CANADA LIMITED • ST. THOMAS, ONTARIO, CANADA Printed in U.S.A.



SEAL AREA DETAIL

DRIVE END VIEW

THE GORMAN-RUPP COMPANY • MANSFIELD, OHIO

GORMAN-RUPP OF CANADA LIMITED • ST. THOMAS, ONTARIO, CANADA

Printed in U.S.A.

S/N 1263840 Up
PUMP ISSUE 1

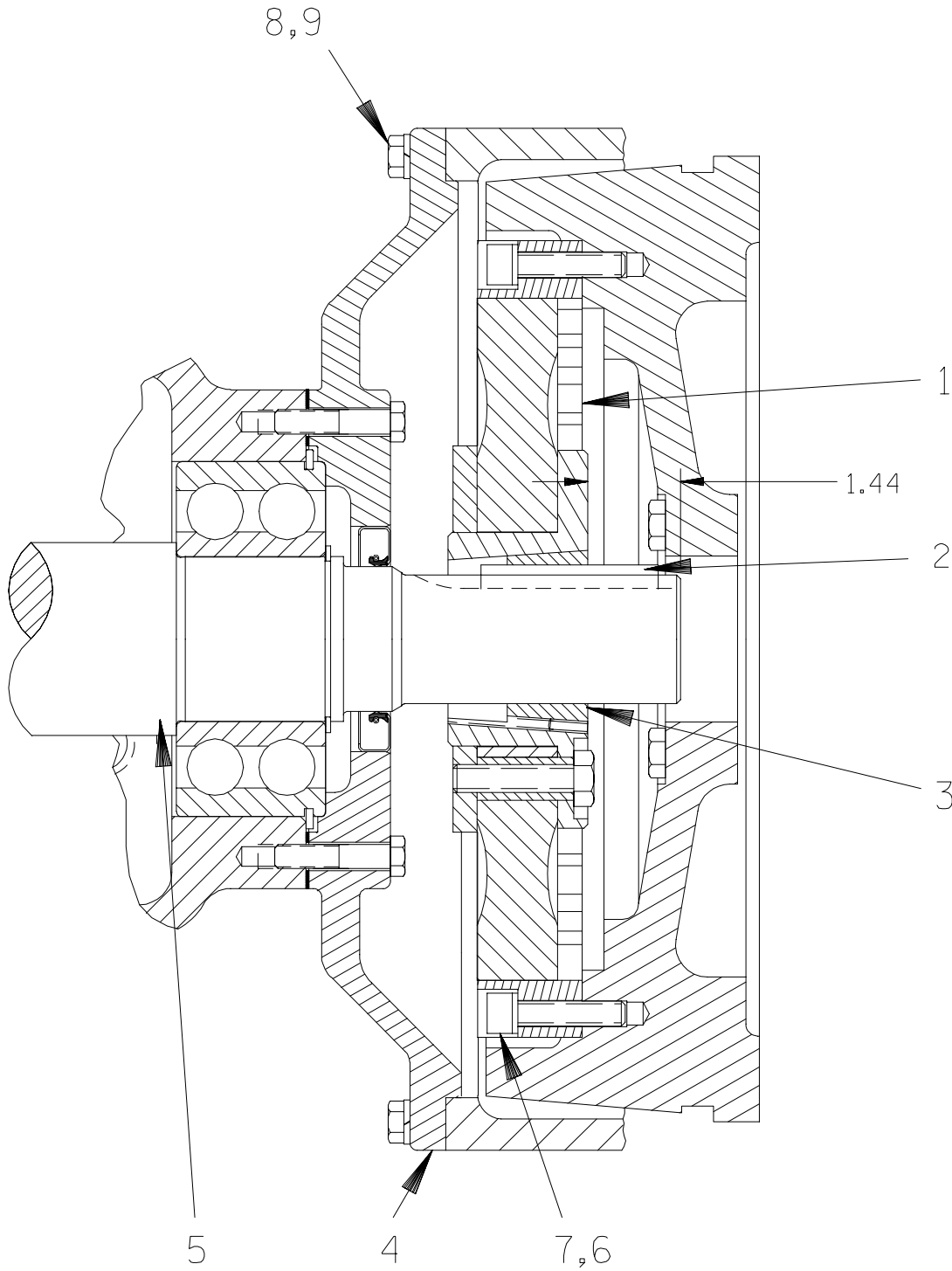
PARTS LIST
44163-253 Repair Rotating Assembly

ITEM NO.	PART NAME	PART NUMBER	MAT'L CODE	QTY	ITEM NO.	PART NAME	PART NUMBER	MAT'L CODE	QTY
1 *	IMPELLER	38615-092	11010	1	20	SEAL PLATE	38272-256	10000	1
2 *	SEAL ASSY	46512-149	---	1	21	SOCKET HD CAPSCREW	DM1004S	17090	1
3 *	INBOARD BALL BEARING	23422-019	---	1	22	IMPELLER WASHER	31514-015	17000	1
4	BEARING HOUSING	38251-513	10000	1	23	PIPE PLUG	P12	15079	1
5	VENTED PLUG	4823A	15079	1	24	PIPE PLUG	P08	15079	1
6	AIR VENT	S1530	---	1	25	BRG CVTY DRAIN PLUG	P08	15079	1
7	RED PIPE BUSHING	AP0802	15079	1	26	SIGHT GAUGE	S1471	---	1
8 *	OUTBOARD BALL BRG	23422-414	---	1	27	INTERMEDIATE GUARD	42381-509	24152	2
9	DRIVE FLANGE	38545-004	10000	1	28 *	SHAFT SLEEVE O-RING	25154-131	---	1
10 *	IMP SHAFT KEY	SUPPLIED W/DRIVE ASSY			29 *	IMPELLER ADJ SHIM SET	48261-057	---	1
11 *	IMPELLER SHAFT	38515-586	1706H	1	30 *	SHAFT SLEEVE	31163-019	1706H	1
12 *	OIL SEAL	S1907	---	1	31	SHIP PLUG	11495B	15079	1
13	SNAP RING	S720	---	1	32	SHIP PLUG	11495B	15079	1
14	HEX HD CAPSCREW	B0608	15991	6	33 *	ADJ SHIM SET	13131-3	17040	12
15	LOCKWASHER	J06	15991	6	34 *	BRG HOUSING O-RING	S1676	---	1
16 *	BRG HOUSING GSKT	38683-474	18000	1	35 *	SEAL PLATE O-RING	25152-381	---	1
17 *	OIL SEAL	25227-771	---	1					
18	HEX HD CAPSCREW	B0805 1/2	15991	4	NOT SHOWN:				
19	LOCKWASHER	J08	15991	4	INSTRUCTION TAG	6588U	---	1	

* INDICATES PARTS RECOMMENDED FOR STOCK

THE GORMAN-RUPP COMPANY • MANSFIELD, OHIO

GORMAN-RUPP OF CANADA LIMITED • ST. THOMAS, ONTARIO, CANADA Printed in U.S.A.



THE GORMAN-RUPP COMPANY • MANSFIELD, OHIO

GORMAN-RUPP OF CANADA LIMITED • ST. THOMAS, ONTARIO, CANADA

Printed in U.S.A.

May 22, 2003

©Copyright by the Gorman-Rupp Company

11 of 14
Page 64.6 C11.5

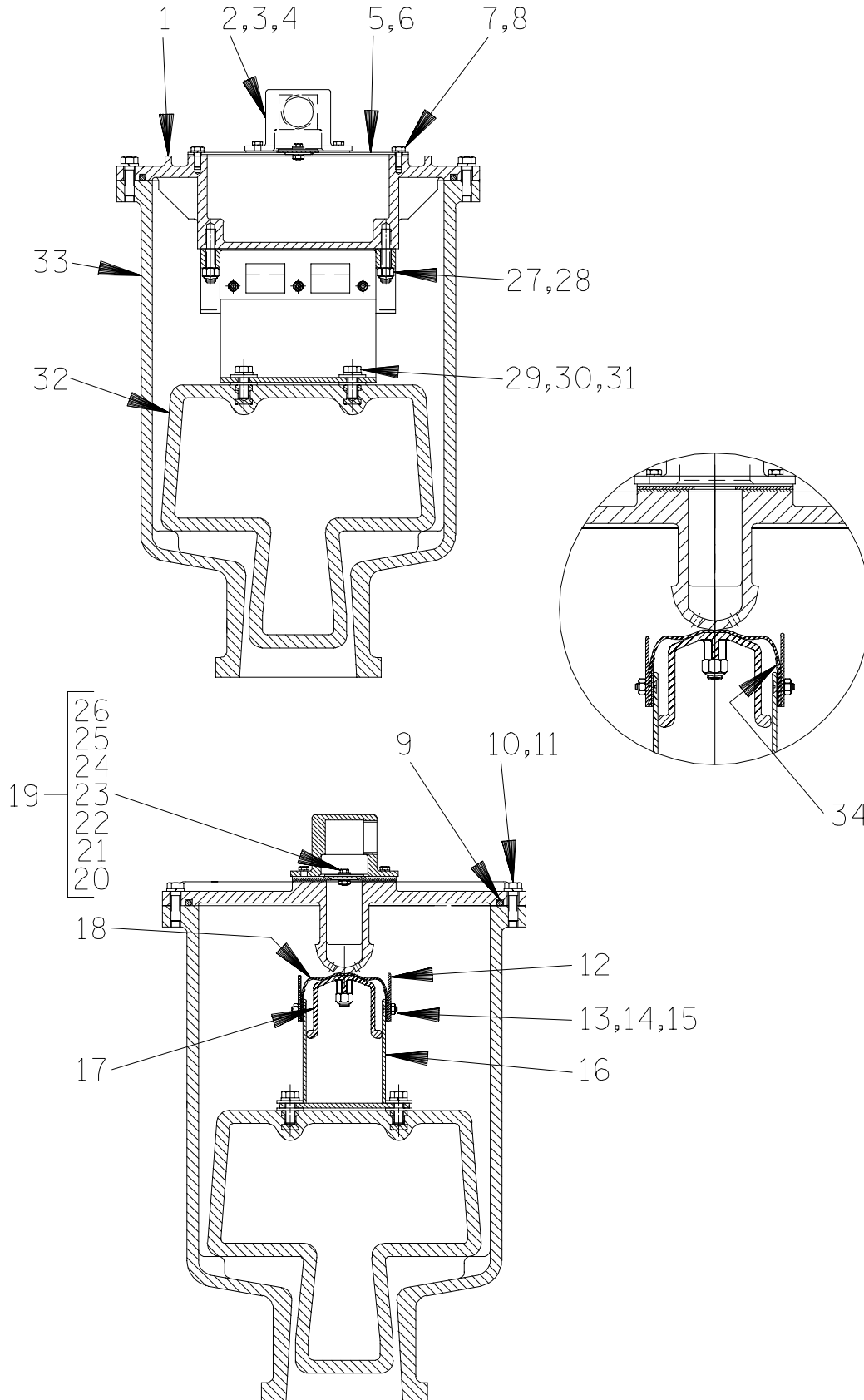
S/N 1263840 Up
PUMP ISSUE 1

PARTS LIST
(SAE4/10) Drive Assembly

ITEM NO.	PART NAME	PART NUMBER	MAT'L CODE	QTY
1	COUPLING ASSY	44165-016	---	1
2	KEY	SUPPLIED W/BUSHING		1
3	BUSHING	24131-498	---	1
4	DRIVE FLANGE	38545-004	10000	1
5	IMPELLER SHAFT	38515-586	1706H	1
6	LOCKWASHER	21171-536	---	8
7	SOCKET HD CAPSCREW	BD0606 1/2	15991	8
8	HEX HD CAPSCREW	B0605	15991	12
9	LOCKWASHER	J06	15991	12

THE GORMAN-RUPP COMPANY • MANSFIELD, OHIO

GORMAN-RUPP OF CANADA LIMITED • ST. THOMAS, ONTARIO, CANADA Printed in U.S.A.



THE GORMAN-RUPP COMPANY • MANSFIELD, OHIO

GORMAN-RUPP OF CANADA LIMITED • ST. THOMAS, ONTARIO, CANADA

Printed in U.S.A.

May 22, 2003

©Copyright by the Gorman-Rupp Company

13 of 14

Page 64.6 C11.5

S/N 1263840 Up
PUMP ISSUE 1

PARTS LIST
46112-704 Priming Chamber Assembly

ITEM NO.	PART NAME	PART NUMBER	MAT'L CODE	QTY	ITEM NO.	PART NAME	PART NUMBER	MAT'L CODE	QTY
1	PRIMING CHAMBER LID	38346-615	1300U	1	18	VALVE STRAP	33276-041	19410	1
2	PEELER VALVE NECK	38349-413	10000	1	19	CHECK VALVE ASSY	46411-112	---	1
3	HEX HD CAPSCREW	B0403 1/2	15991	4	20 *	-CHECK VALVE	38671-413	19020	1
4	LOCKWASHER	J04	15991	4	21	-LOCKWASHER	J#10	17000	1
5 *	VALVE PLATE GSKT	38687-555	19060	1	22	-HEX NUT	D#10	17000	1
6	VALVE PLATE	33541-040	17000	1	23	-FLATWASHER	21161-810	---	1
7	HEX HD CAPSCREW	B0402 1/2	15991	4	24	-HEX HD CAPSCREW	B#10-02	17000	1
8	LOCKWASHER	J04	15991	4	25	-FLATWASHER	21161-811	---	1
9 *	LINEAR O-RING	18512-056	---	3.86'	26 *	-SEALING WASHER	25123-056	---	1
10	HEX HD CAPSCREW	B0605	15991	12	27	STUD	C0607	17000	2
11	LOCKWASHER	J06	15991	12	28	HEX LOCK NUT	DD06	17000	2
12	GUIDE PLATE	33522-009	17000	2	29	HEX HD CAPSCREW	B0604	17000	4
13	FLAT HD CAPSCREW	F#10-03	17000	6	30	LOCKWASHER	J06	17000	4
14	LOCKWASHER	J#10	17000	6	31	FLAT WASHER	KB06	17000	8
15	HEX NUT	D#10	17000	6	32 *	PRIMING VALVE FLOAT	38349-412	19220	1
16	VLV STRAP BRKT ASSY	41881-597	2415X	1	33	PRIMING CHAMBER	38343-018	10000	1
17	CLAMP PLATE	38349-411	14000	1	34	VLV STRAP PROTECTOR	33271-019	19000	2

* INDICATES PARTS RECOMMENDED FOR STOCK

THE GORMAN-RUPP COMPANY • MANSFIELD, OHIO

GORMAN-RUPP OF CANADA LIMITED • ST. THOMAS, ONTARIO, CANADA Printed in U.S.A.

**For U.S. and International Warranty Information,
Please Visit www.grpumps.com/warranty
or call:
U.S.: 419-755-1280
International: +1-419-755-1352**

**For Canadian Warranty Information,
Please Visit www.grcanada.com/warranty
or call:
519-631-2870**