



*PRIME-AIRE<sup>®</sup> SERIES*

PUMP MODELS

PA6C60 – B – E50 460/3

PA6C60 – B – (E50)

66F60 – B – (E50)

**MANUAL**  
**PART 2 of 3**

**PARTS**  
**LIST**

**WITH**  
**PERFORMANCE CURVE**

**THE GORMAN-RUPP COMPANY • MANSFIELD, OHIO**

GORMAN-RUPP OF CANADA LIMITED • ST. THOMAS, ONTARIO, CANADA Printed in U.S.A.

[www.gormanrupp.com](http://www.gormanrupp.com)

©Copyright by the Gorman-Rupp Company

## PERFORMANCE CURVE – SECTION A

### RECORDING MODEL AND SERIAL NUMBERS

Please record the pump model and serial number in the spaces provided below and in the separate Installation/Operation Manual accompanying your pump. Your Gorman-Rupp distributor needs this information when you require parts or service.

Pump Model: \_\_\_\_\_

Serial Number: \_\_\_\_\_

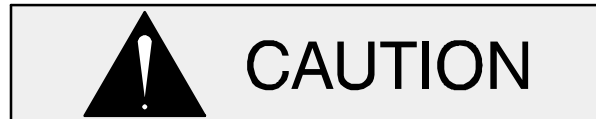
### WARRANTY INFORMATION

The pump warranty is provided as part of Gorman-Rupp's support program for customers who operate and maintain their equipment as described in this manual and other accompanying literature. Please note that should the equipment be abused or modified to change its performance beyond the original factory specifications, the warranty will become void and any claim will be denied.

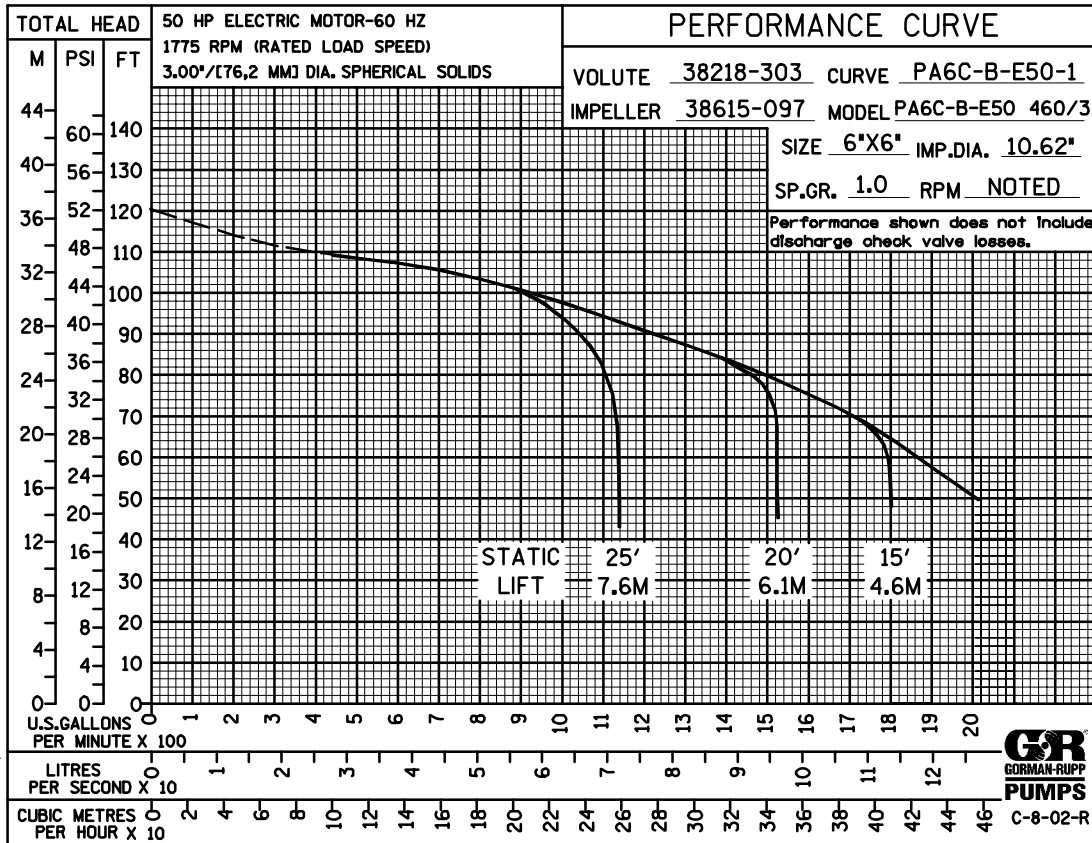
### PERFORMANCE CURVE

The performance curve on the following page is based on 70° F (21° C) clear water at sea level, with minimum suction lift. Since pump installations are seldom identical, your performance may be different due to such factors as viscosity, specific gravity, elevation, temperature, and impeller trim.

If your pump serial number is followed by an "N", your pump is **NOT** a standard production model. Contact the Gorman-Rupp Company to verify performance or part numbers.

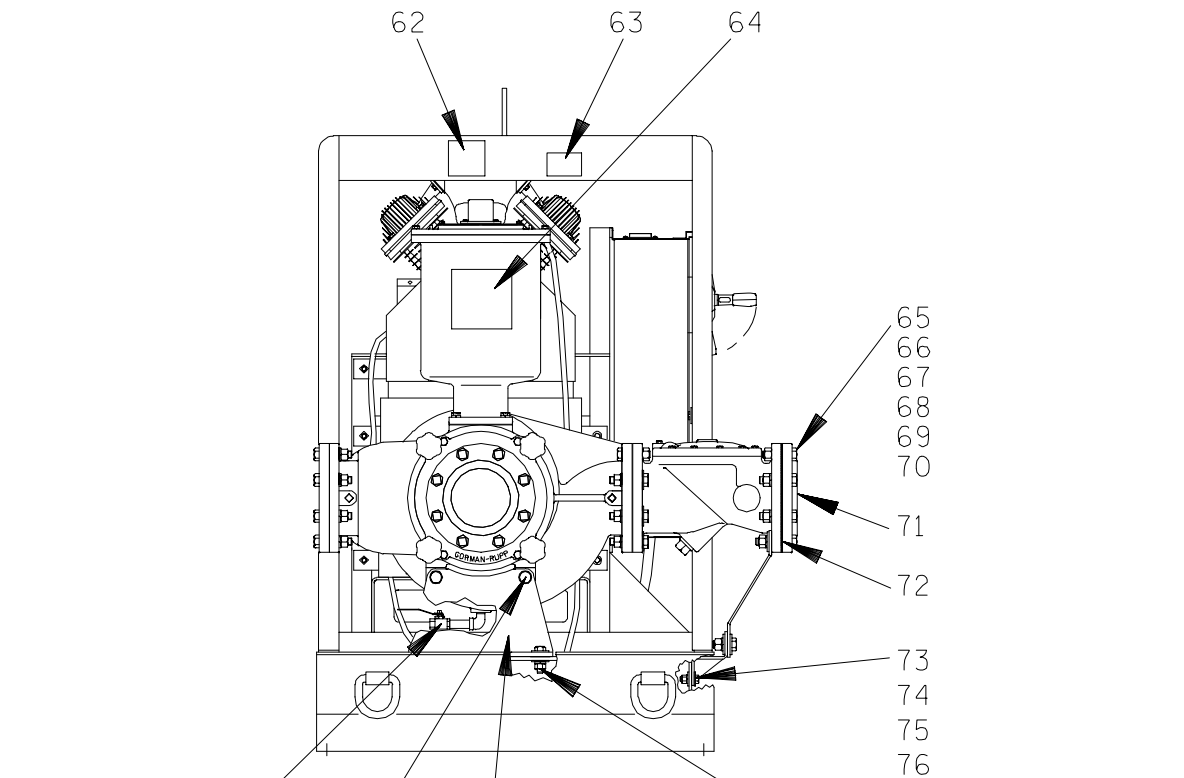
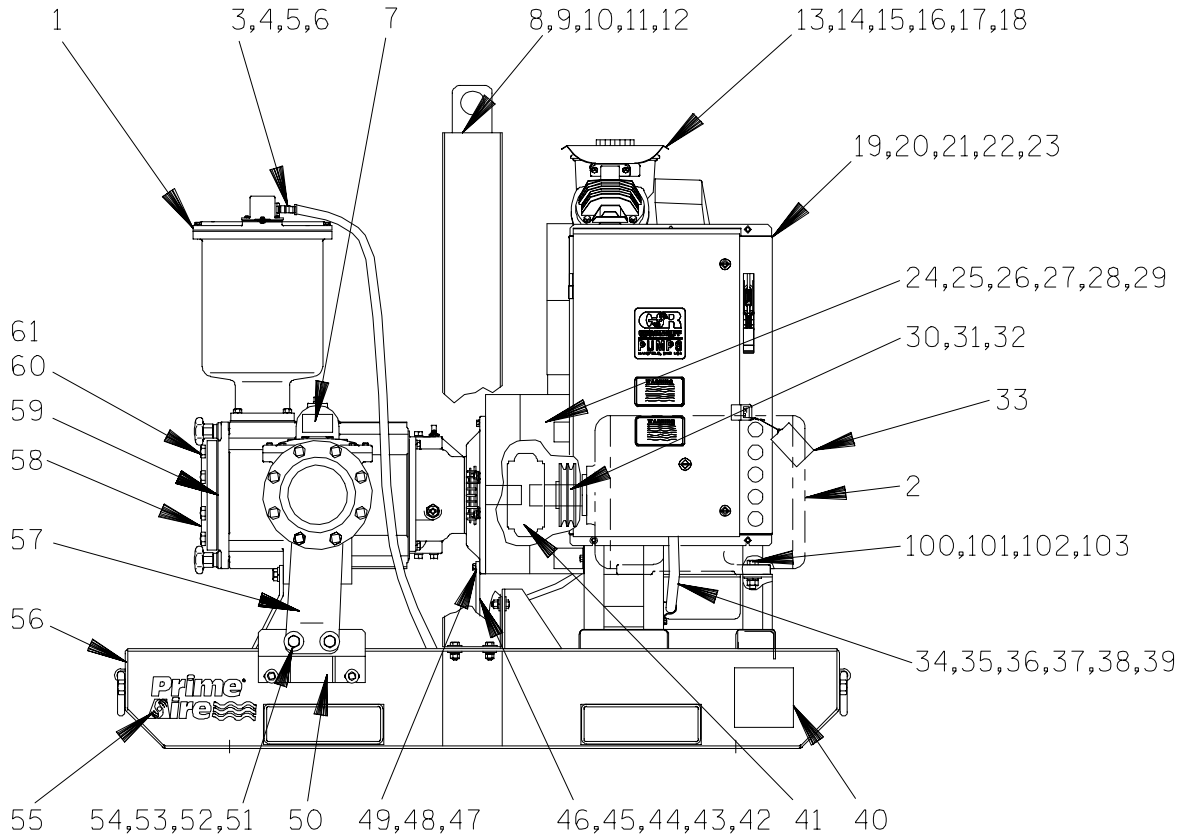


Pump speed and operating condition points must be within the continuous performance range shown on the curve.



Performance Curve - Model PA6C60-B-E50 460/3

This Page Intentionally Blank



86, 85, 84, 83, 82, 81, 80, 79, 78, 77  
**THE GORMAN-RUPP COMPANY • MANSFIELD, OHIO**

GORMAN-RUPP OF CANADA LIMITED • ST. THOMAS, ONTARIO, CANADA Printed in U.S.A.

S/N 1253542 Up  
PUMP ISSUE 1

**Pump Model PA6C60-B-E50 460/3**

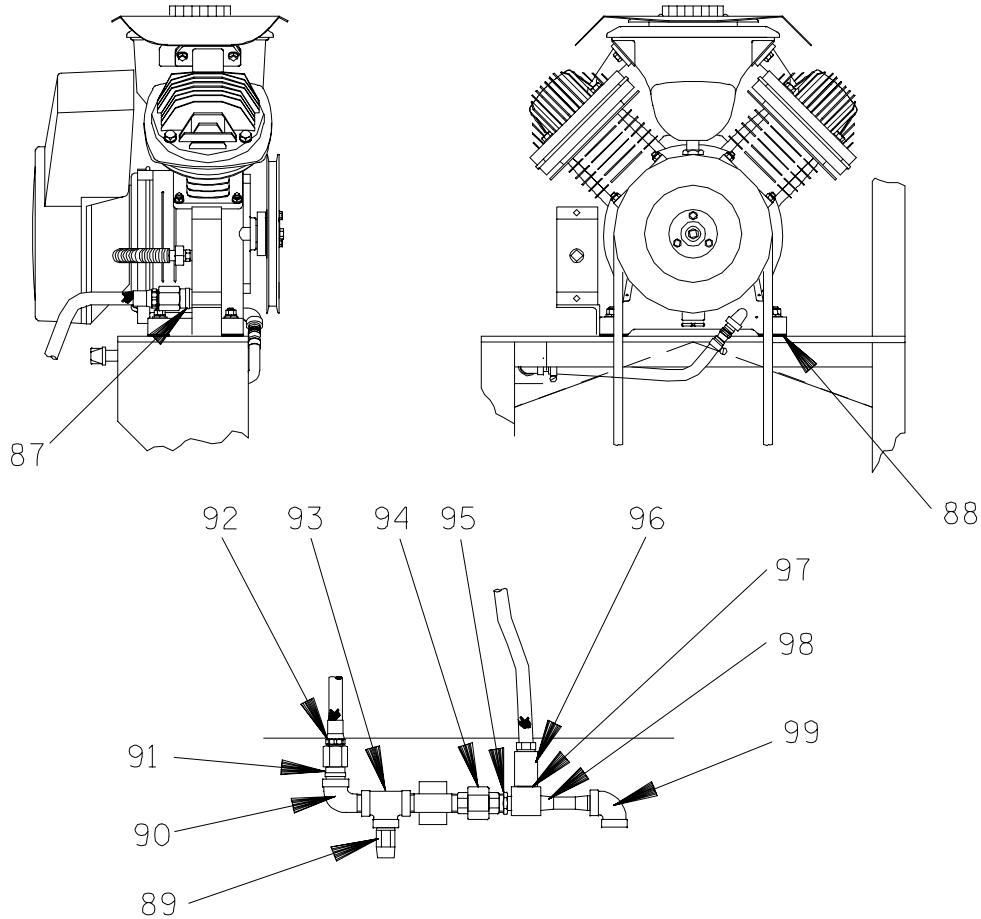
If your pump serial number is followed by an "N", your pump is **NOT** a standard production model. Contact the Gorman-Rupp Company to verify part numbers.

ITEM NO.	PART NAME	PART NUMBER	MAT'L CODE	QTY	ITEM NO.	PART NAME	PART NUMBER	MAT'L CODE	QTY
1	PUMP END ASSY	PA6C60-B-(E50)		1	44	LOCK WASHER	J08	15991	2
2	50 HP, 1750 RPM MOTOR	28266-441	---	1	45	FLAT WASHER	K08	15991	4
3	REDUCER BUSHING	AP1608	11999	1	46	HEX NUT	D08	15991	2
4	CONNECTOR	S1598	---	1	47	HEX HD CAPSCREW	B0607	15991	8
5	HOSE BARB FTG	26523-047	---	1	48	LOCK WASHER	J06	15991	8
6	1/2" HOSE	18513-113	---	4*	49	HEX NUT	D06	15991	2
7	WARNING DECAL	2613FE	---	1	50	VALVE SUPPORT ASSY	41881-753	24150	1
8	HOIST BAIL ASSY	44715-037	24150	1	51	HEX HD CAPSCREW	B1214	15991	2
9	HEX HD CAPSCREW	B0805	15991	8	52	LOCK WASHER	J12	15991	2
10	LOCK WASHER	J08	15991	8	53	FLAT WASHER	KB12	17040	4
11	FLAT WASHER	K08	15991	16	54	HEX NUT	D12	15991	2
12	HEX NUT	D08	15991	8	55	PA DECAL	38812-078	---	2
13	AIR COMPRESSOR ASSY	46181-905	---	1	56	FLEX SKID V-BELT BASE	41568-001	24150	1
14	OIL FILL DECAL	38816-194	---	1	57	CHECK VALVE BRACKET	34742-019	15080	1
15	HEX HD CAPSCREW	B0607	15991	4	58	SUCTION FLANGE	1758	10010	1
16	LOCK WASHER	J06	15991	4	59 *	SUCT FLANGE GASKET	25113-036	---	1
17	FLAT WASHER	K06	15991	6	60	HEX HD CAPSCREW	B1208	15991	8
18	HEX NUT	D06	15991	4	61	LOCKWASHER	J12	15991	8
19	CONTROL BOX	27515-305	---	1	62	WARNING DECAL	38816-330	---	2
20	HEX HD CAPSCREW	B0405	15991	5	63	LIFTING DECAL	38816-218	---	2
21	LOCK WASHER	J04	15991	5	64	G-R DECAL	GR-06	---	1
22	FLAT WASHER	K04	15991	5	65	HEX HD CAPSCREW	B1212	15991	2
23	HEX NUT	D04	15991	5	66	HEX HD CAPSCREW	B1213	15991	4
24	VERT GUARD ASSY	42351-314	---	1	67	HEX HD CAPSCREW	B1214	15991	2
25	HEX HD CAPSCREW	B0606	15991	2	68	FLAT WASHER	K12	15991	4
26	HEX HD CAPSCREW	B0607	15991	4	69	LOCK WASHER	J12	15991	8
27	LOCK WASHER	J06	15991	6	70	HEX NUT	D12	15991	8
28	FLAT WASHER	K06	15991	12	71	DISCH FLANGE	1758	10010	1
29	HEX NUT	D06	15991	6	72	DISCH FLANGE GASKET	25113-036	---	1
30	7.75 DODGE QD SHEAVE	24226-007	---	1	73	HEX HD CAPSCREW	B0805-1/2	15991	2
31	SK BUSHING	24131-578	---	1	74	LOCKWASHER	J08	15991	2
32 *	ADJUSTABLE V-BELT	44112-501	---	1	75	FLAT WASHER	K08	15991	4
33	460 VOLT TAG	38816-460	---	1	76	HEX NUT	D08	15991	2
34	CNTRL BOX/MTR CABLE	47325-015	---	1	77	HEX HD CAPSCREW	B0806	15991	2
35	STRAP	22811-259	---	2	78	LOCKWASHER	J08	15991	2
36	HEX HD CAPSCREW	B0503	15991	2	79	FLAT WASHER	K08	15991	4
37	LOCK WASHER	J05	15991	2	80	HEX NUT	D08	15991	2
38	FLAT WASHER	K05	15991	2	81	PUMP FOOT BRACKET	34335-146	15080	1
39	HEX NUT	D05	15991	2	82	HEX HD CAPSCREW	B1206	15991	2
40	GR DECAL	GR-06	---	2	83	LOCKWASHER	J12	15991	2
41 *	DODGE PARA FLEX CPLG	24341-025	---	1	84	STREET ELBOW	RS08	11999	1
42	INTERMEDIATE BRACKET	34258-020	15080	1	85	PIPE NIPPLE	T0808	15079	1
43	HEX HD CAPSCREW	B0805-1/2	15991	2	86	1/2" BALL VALVE	26631-023	---	1

**THE GORMAN-RUPP COMPANY • MANSFIELD, OHIO**

GORMAN-RUPP OF CANADA LIMITED • ST. THOMAS, ONTARIO, CANADA

Printed in U.S.A.



**Pump Model PA6C60-B-E50 460/3**

ITEM NO.	PART NAME	PART NUMBER	MAT'L CODE	QTY	ITEM NO.	PART NAME	PART NUMBER	MAT'L CODE	QTY
87	MALE ADAPTOR	26351-065	---	1	NOT SHOWN:				
88	SHIM SET	48261-045	---	4		FLOAT SWITCH KIT	48312-987	---	1
89	RELIEF VALVE	26662-028	---	1		OIL DECAL	38816-123	---	1
90	STREET ELBOW	RS08	11999	1		LUBE DECAL	11421A	---	1
91	MALE ADAPTOR	26351-065	---	1		SUCTION STICKER	6588AG	---	1
92	HOSE ASSY	46341-427	---	1		INSTRUCTION TAG	38817-085	---	1
93	1/2" TEE	U08	11999	1		NAME PLATE	38818-127	13000	1
94	PIPE UNION	AH08	11999	1		DRIVE SCREW	BM#04-03	17000	4
95	RED PIPE BUSHING	AP0806	15079	1		DISCHARGE STICKER	6588BJ	---	1
96	MALE CONNECTOR	26525-020	---	2		INSTRUCTION DECAL	38816-331	---	2
97	1/2" PIPE COUPLING	AE08	15079	1		WIRING INSTRUCTIONS	47117-001	---	1
98	VENTURI	26817-002	---	1		GRD WARNING STICKER	38816-062	---	1
99	PIPE ELBOW	R08	11999	1		ADJ V-BELT INST SHEET	GL-05523	---	1
100	HEX HD CAPSCREW	B1009	15991	4	OPTIONAL:				
101	LOCKWASHER	J10	15991	4		FLOAT SWITCH KIT			
102	FLAT WASHER	K10	15991	4		- FLOAT SWITCH	48312-987	---	1
103	HEX NUT	D10	15991	4		- CABLE INST ASSY	47117-003	---	1

\* INDICATES PARTS RECOMMENDED FOR STOCK

**THE GORMAN-RUPP COMPANY • MANSFIELD, OHIO**

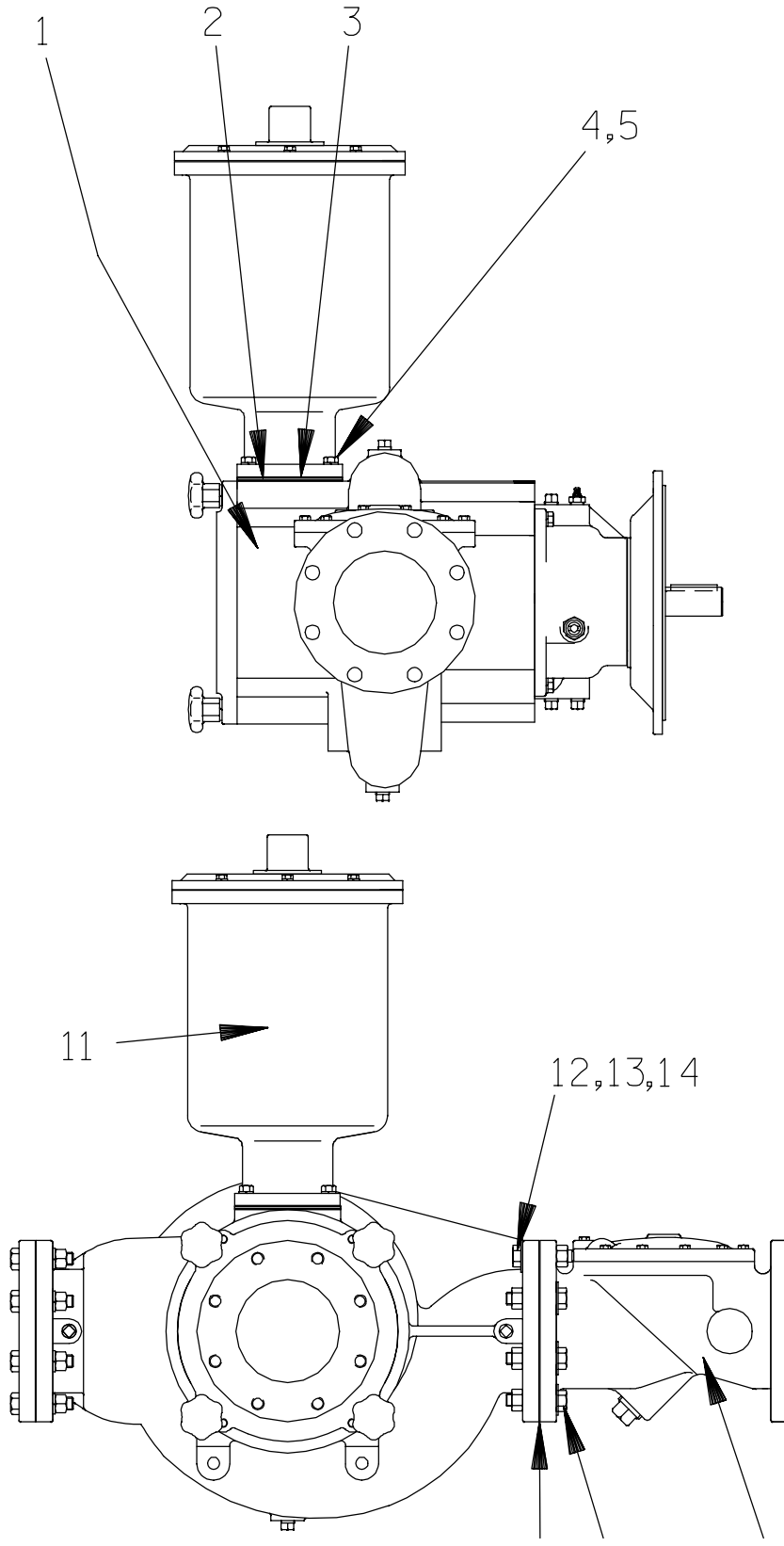
GORMAN-RUPP OF CANADA LIMITED • ST. THOMAS, ONTARIO, CANADA

Printed in U.S.A.

PA6C60-B-E50 460/3  
PA6C60-B-(E50)  
66F60-B-(E50)

ACDEU

S/N 1253542 Up  
PUMP ISSUE 1



**THE GORMAN-RUPP COMPANY • MANSFIELD, OHIO**

GORMAN-RUPP OF CANADA LIMITED • ST. THOMAS, ONTARIO, CANADA

Printed in U.S.A.



**Pump End Assembly PA6C60-B-(E50)**

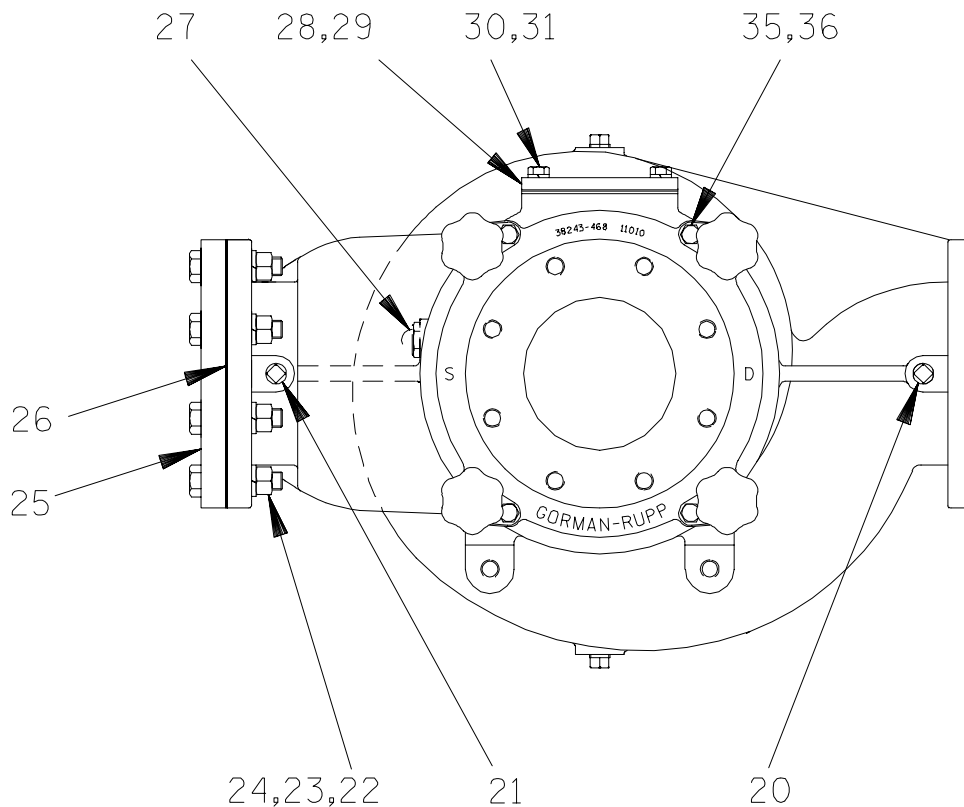
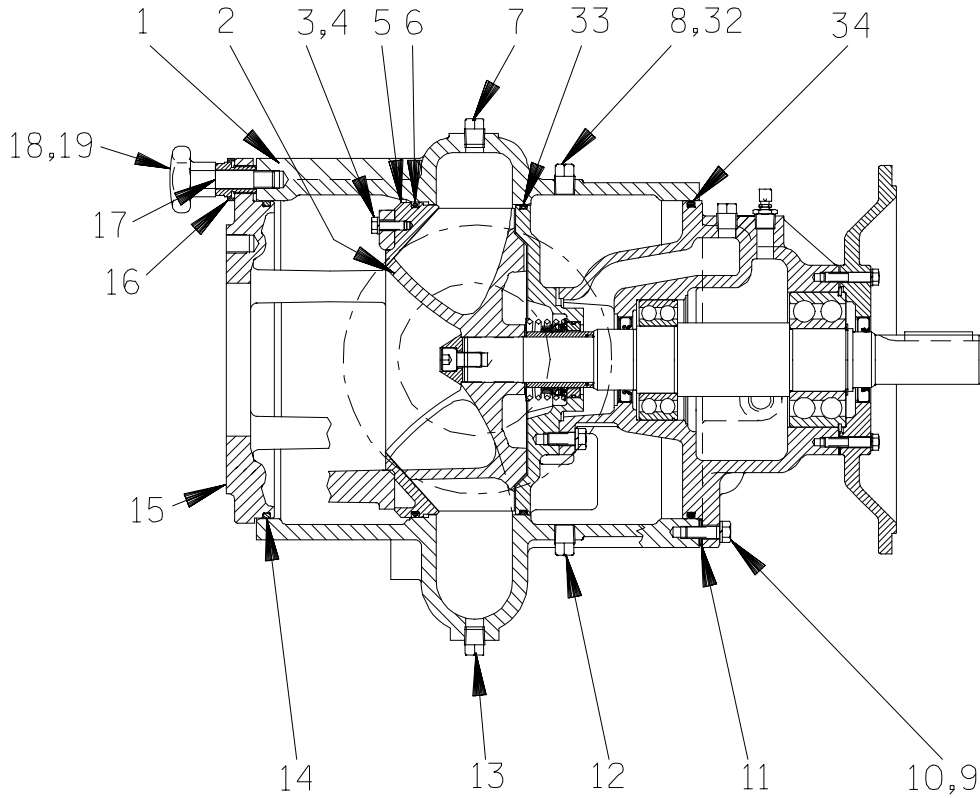
ITEM NO.	PART NAME	PART NUMBER	MAT'L CODE	QTY
1	PUMP END ASSY	66F60-B-(E50)	---	1
2	BAFFLE	31113-011	17000	1
3	* PRIMING CHAMBER GSKT	38687-053	19060	1
4	HEX HD CAPSCREW	B0806	15991	4
5	LOCKWASHER	J08	15991	4
6	CHECK VALVE ASSY	26642-126	---	1
	-FLAPPER	26688-001	---	1
	-COVER GASKET	26688-002	---	1
7	HEX HD CAPSCREW	B1213	15991	6
8	LOCKWASHER	J12	15991	6
9	HEX NUT	D12	15991	6
10	* CASING GASKET	25113-036	---	1
11	PRIMING CHAMBER ASSY	46112-704	---	1
12	HEX HD CAPSCREW	B1212	15991	2
13	LOCK WASHER	J12	15991	2
14	HEX NUT	D12	15991	2

\* INDICATES PARTS RECOMMENDED FOR STOCK

PA6C60-B-E50 460/3  
 PA6C60-B-(E50)  
 66F60-B-(E50)

ACDEU

S/N 1253542 Up  
 PUMP ISSUE 1



**THE GORMAN-RUPP COMPANY • MANSFIELD, OHIO**

GORMAN-RUPP OF CANADA LIMITED • ST. THOMAS, ONTARIO, CANADA

Printed in U.S.A.

Pump End Assembly 66F60-B-(E50)

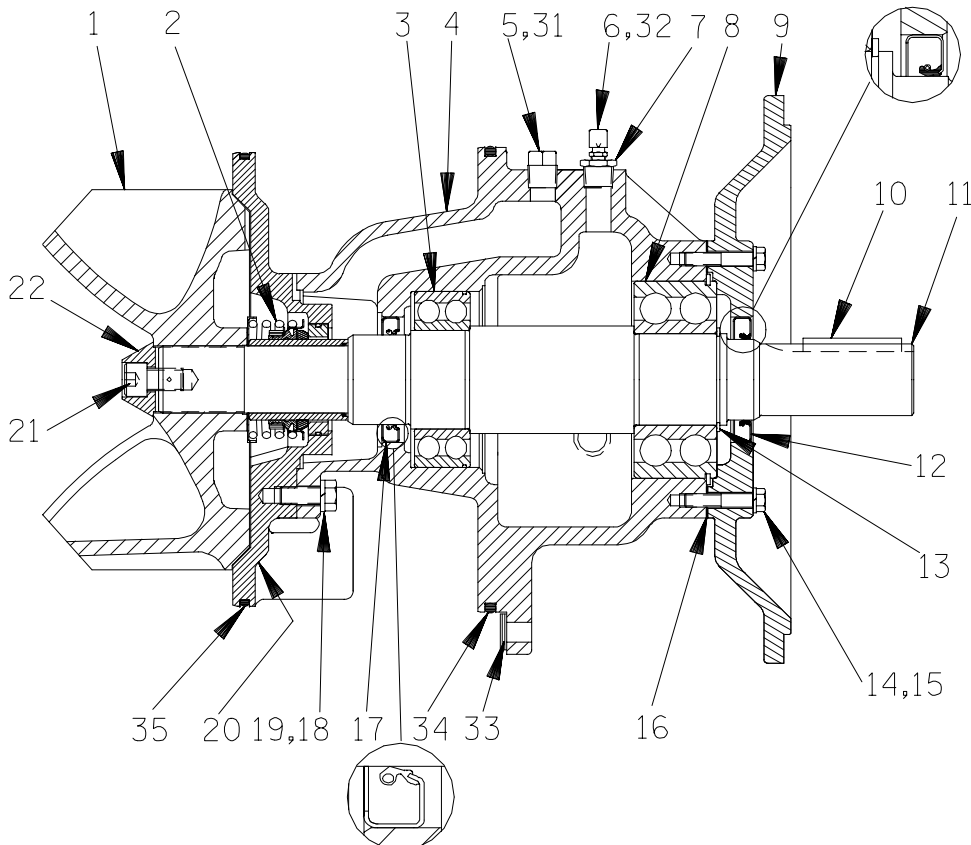
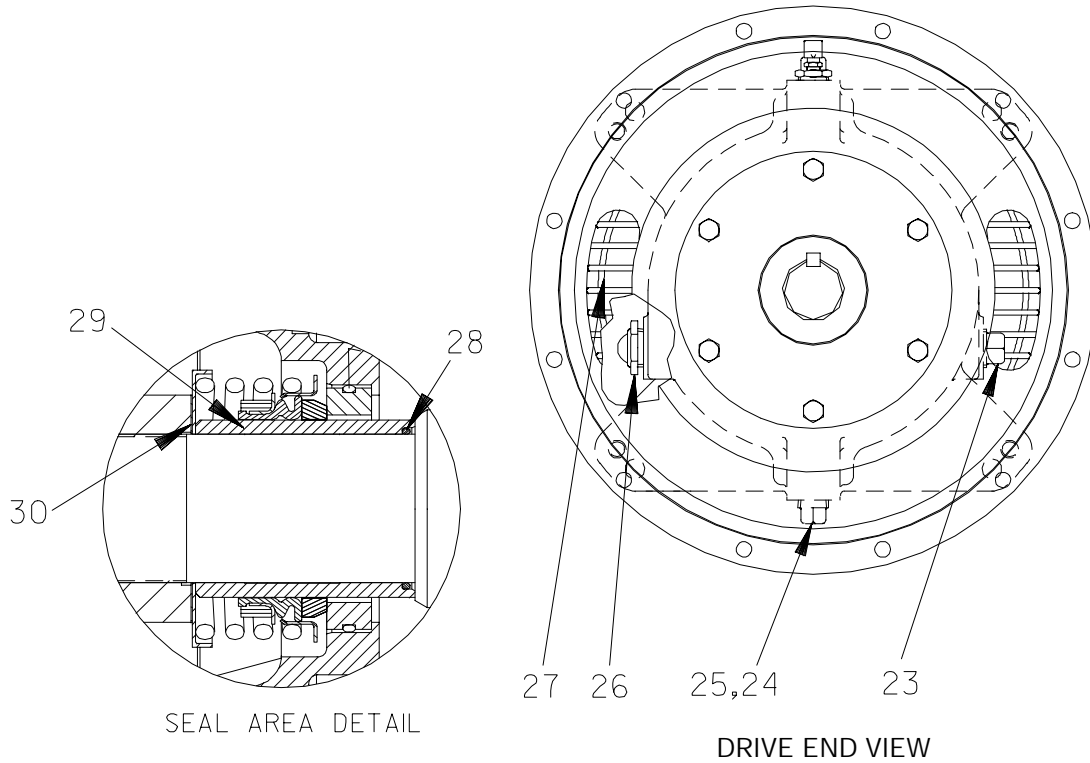
ITEM NO.	PART NAME	PART NUMBER	MAT'L CODE	QTY	ITEM NO.	PART NAME	PART NUMBER	MAT'L CODE	QTY
1	PUMP CASING	38218-303	11010	1	23	LOCKWASHER	J12	15991	8
2	REPAIR ROTATING ASSY	44163-345	---	1	24	HEX NUT	D12	15991	8
3	HEX HD CAPSCREW	B0604 1/2	17000	4	25	BLIND FLANGE ASSY	42111-349	---	1
4	LOCKWASHER	J06	17090	4	26 *	FLANGE GASKET	25113-036	---	1
5 *	WEAR RING	38691-864	11010	1	27	SIGHT GAUGE	S1471	---	1
6 *	WEAR RING O-RING	25152-453	---	1	28	COVER PLATE	33541-045	15080	1
7	PIPE PLUG	P08	15079	1	29 *	CVR PLATE GASKET	38687-053	19060	1
8	VENTED PLUG	4823A	15079	1	30	HEX HD CAPSCREW	B0805	15991	4
9	HEX HD CAPSCREW	B0806	15991	4	31	LOCKWASHER	J08	15991	4
10	LOCKWASHER	J08	15991	4	32	SHIPPING PLUG	11495B	15079	1
11 *	ADJ SHIM SET	13131-3	17040	12	33	SEAL PLATE O-RING	25152-381	---	1
12	SEAL DRAIN PLUG	P08	15079	1	34	BEARING HSG O-RING	S1676	---	1
13	CASING DRAIN PLUG	P08	15079	1	35	HEX HD CAPSCREW	B0804-1/2	15991	4
14 *	BACK CVR PLATE O-RING	S1676	---	1	36	LOCKWASHER	J08	15991	4
15	BACK COVER PLATE	38243-468	11010	1	NOT SHOWN:				
16 *	ADJ SCREW	31871-070	1500X	4		PIPE PLUG	P12	15079	1
17	LOCKING COLLAR	38115-551	15001	4		OIL LEVEL DECAL	38816-123	---	1
18	STUD	C1213	15991	4		PA SERIES NAME PLATE	38818-127	13000	1
19	HAND KNOB	38115-901	10000	4		DRIVE SCREW	BM#04-03	17000	4
20	PIPE PLUG	P08	15079	1		60 SERIES NAME PLATE	2613R	13990	1
21	PIPE PLUG	P08	15079	1		DRIVE SCREW	BM#04-03	17000	2
22	HEX HD CAPSCREW	B1213	15991	8					

\* INDICATES PARTS RECOMMENDED FOR STOCK

PA6C60-B-E50 460/3  
PA6C60-B-(E50)  
66F60-B-(E50)

ACDEU

S/N 1253542 Up  
PUMP ISSUE 1



**THE GORMAN-RUPP COMPANY • MANSFIELD, OHIO**

GORMAN-RUPP OF CANADA LIMITED • ST. THOMAS, ONTARIO, CANADA

Printed in U.S.A.

Repair Rotating Assembly 44163-345

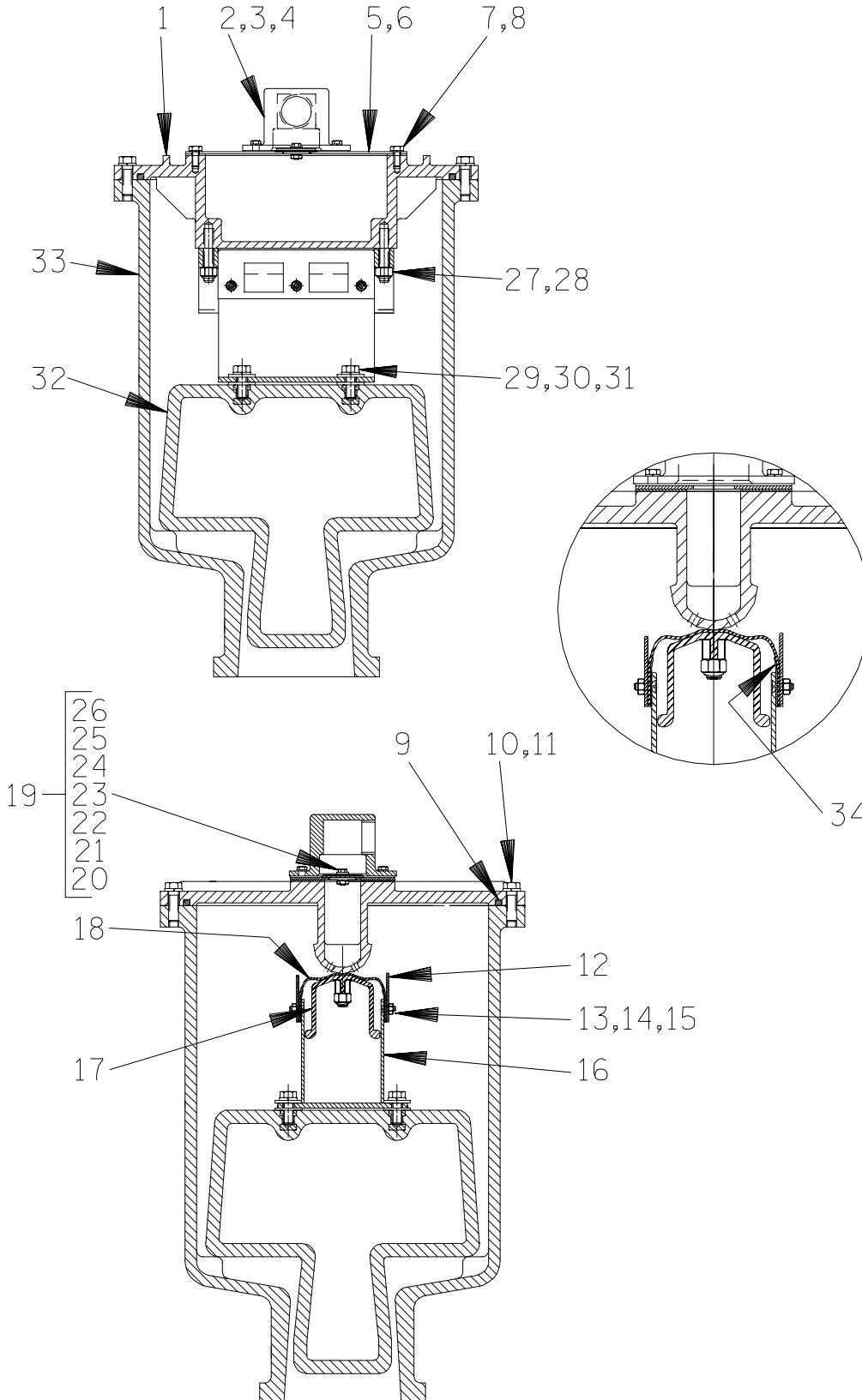
ITEM NO.	PART NAME	PART NUMBER	MAT'L CODE	QTY	ITEM NO.	PART NAME	PART NUMBER	MAT'L CODE	QTY
1 *	IMPELLER	38615-097	11010	1	20	SEAL PLATE	38272-256	10000	1
2 *	SEAL ASSY	46512-149	---	1	21	SOCKET HD CAPSCREW	DM1004S	17090	1
3 *	INBOARD BALL BEARING	23422-019	---	1	22	IMPELLER WASHER	31514-015	17000	1
4	BEARING HOUSING	38251-513	10000	1	23	PIPE PLUG	P12	15079	1
5	VENTED PLUG	4823A	15079	1	24	SEAL CVTY DRAIN PLUG	P08	15079	1
6	AIR VENT	S1530	---	1	25	BRG CVTY DRAIN PLUG	P08	15079	1
7	RED PIPE BUSHING	AP0802	15079	1	26	SIGHT GAUGE	S1471	---	1
8 *	OUTBOARD BALL BRG	23422-414	---	1	27	INTERMEDIATE GUARD	42381-509	24152	2
9	DRIVE FLANGE	38545-004	10000	1	28 *	SHAFT SLEEVE O-RING	25154-131	---	1
10 *	IMP SHAFT KEY	SUPPLIED W/COUPLING			29 *	SHAFT SLEEVE	31163-019	1706H	1
11 *	IMPELLER SHAFT	38515-586	1706H	1	30 *	IMPELLER ADJ SHIM SET	48261-057	---	1
12 *	OIL SEAL	S1907	---	1	31	SHIP PLUG	11495B	15079	1
13	SNAP RING	S720	---	1	32	SHIP PLUG	11495B	15079	1
14	HEX HD CAPSCREW	B0608	15991	6	33	ADJ SHIM	13131-3	17040	12
15	LOCKWASHER	J06	15991	6	34 *	BRG HOUSING O-RING	S1676	---	1
16 *	BRG HOUSING GSKT	38683-474	18000	1	35 *	SEAL PLATE O-RING	25152-381	---	1
17 *	OIL SEAL	25227-771	---	1	NOT SHOWN:				
18	HEX HD CAPSCREW	B0805-1/2	15991	4		INSTRUCTION TAG	6588U	---	1
19	LOCKWASHER	J08	15991	4		ROTATION DECAL	2613M	---	1

\* INDICATES PARTS RECOMMENDED FOR STOCK

PA6C60-B-E50 460/3  
 PA6C60-B-(E50)  
 66F60-B-(E50)

ACDEU

S/N 1253542 Up  
 PUMP ISSUE 1



**THE GORMAN-RUPP COMPANY • MANSFIELD, OHIO**

GORMAN-RUPP OF CANADA LIMITED • ST. THOMAS, ONTARIO, CANADA

Printed in U.S.A.

### Priming Chamber Assembly 46112-704

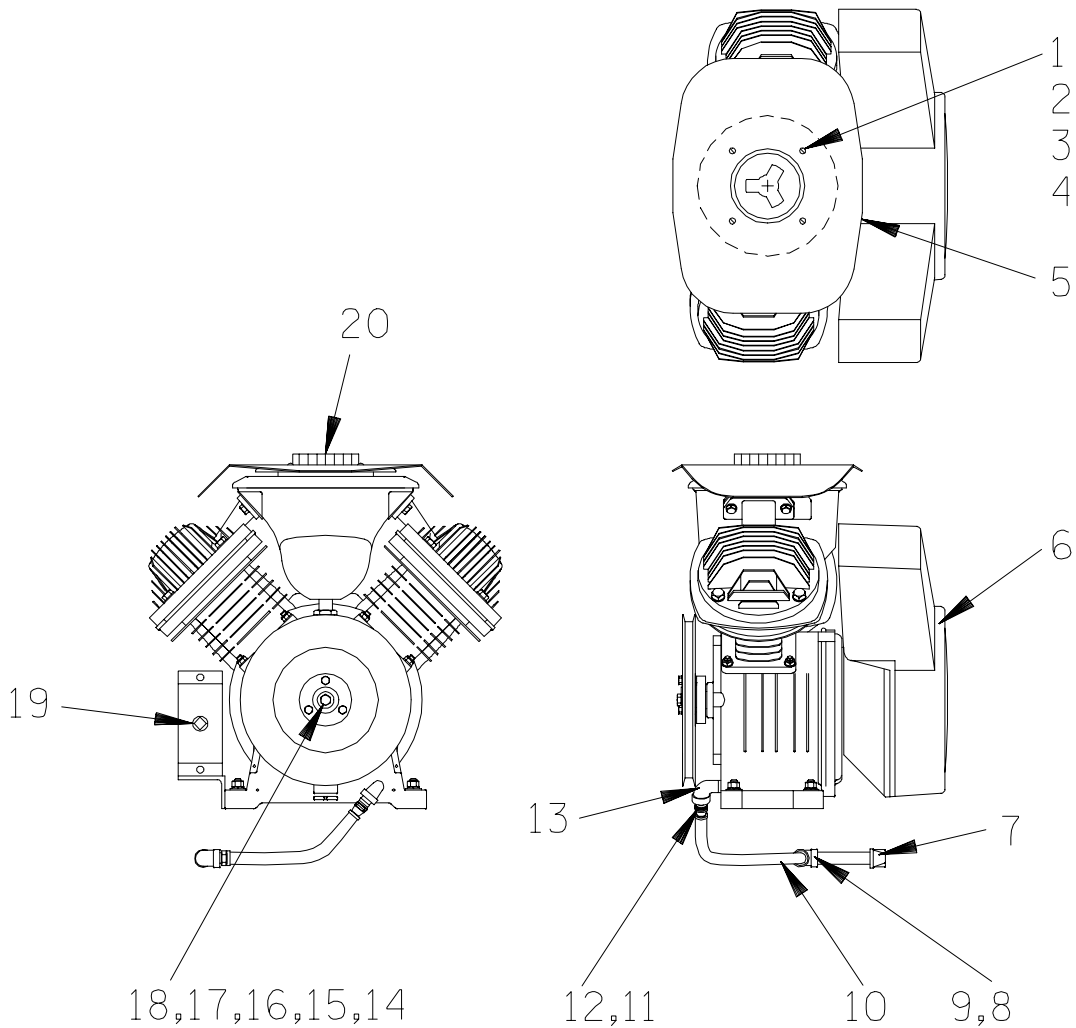
ITEM NO.	PART NAME	PART NUMBER	MAT'L CODE	QTY	ITEM NO.	PART NAME	PART NUMBER	MAT'L CODE	QTY
1	PRIMING CHAMBER LID	38346-615	1300U	1	18	VALVE STRAP	33276-041	19410	1
2	PEELER VALVE NECK	38349-413	10000	1	19	CHECK VALVE ASSY	46411-112	---	1
3	HEX HD CAPSCREW	B0403 1/2	15991	4	20 *	-CHECK VALVE	38671-413	19020	1
4	LOCKWASHER	J04	15991	4	21	-LOCKWASHER	J#10	17000	1
5	VALVE PLATE GSKT	38687-555	19060	1	22	-HEX NUT	D#10	17000	1
6	VALVE PLATE	33541-040	17000	1	23	-FLATWASHER	21161-810	---	1
7	HEX HD CAPSCREW	B0402 1/2	15991	4	24	-HEX HD CAPSCREW	B#10-02	17000	1
8	LOCKWASHER	J04	15991	4	25	-FLATWASHER	21161-811	---	1
9	3.85 FT LINEAR O-RING	18512-056	---	1	26	-SEALING WASHER	25123-056	---	1
10	HEX HD CAPSCREW	B0605	15991	12	27	STUD	C0607	17000	2
11	LOCKWASHER	J06	15991	12	28	HEX LOCK NUT	DD06	17000	2
12	GUIDE PLATE	33522-009	17000	2	29	HEX HD CAPSCREW	B0604	17000	4
13	FLAT HD CAPSCREW	F#10-03	17000	6	30	LOCKWASHER	J06	17000	4
14	LOCKWASHER	J#10	17000	6	31	FLAT WASHER	KB06	17000	8
15	HEX NUT	D#10	17000	6	32 *	PRIMING VALVE FLOAT	38349-412	19220	1
16	VLV STRAP BRKT ASSY	41881-597	2415X	1	33	PRIMING CHAMBER	38343-018	10000	1
17	CLAMP PLATE	38349-411	14000	1	34	VLV STRAP PROTECTOR	33271-019	19000	2

\* INDICATES PARTS RECOMMENDED FOR STOCK

PA6C60-B-E50 460/3  
PA6C60-B-(E50)  
66F60-B-(E50)

ACDEU

S/N 1253542 Up  
PUMP ISSUE 1



**THE GORMAN-RUPP COMPANY • MANSFIELD, OHIO**

GORMAN-RUPP OF CANADA LIMITED • ST. THOMAS, ONTARIO, CANADA

Printed in U.S.A.



### 46181-905 Air Compressor Assembly

ITEM NO.	PART NAME	PART NUMBER	MAT'L CODE	QTY
1	MACHINE SCREW	X#10-02	15991	4
2	HEX NUT	D#10	15991	4
3	LOCK WASHER	J#10	15991	4
4	FLAT WASHER	K#10	15991	4
5	A/C COVER	38354-043	15120	1
6	AIR COMPRESSOR	26813-111	---	1
7	PIPE CAP	V06	15079	1
8	PIPE ELBOW	R06	11999	1
9	HOSE BARB FITTING	26523-334	---	1
10	1' HOSE	18513-302	---	1
11	HOSE END	26523-015	---	1
12	MALE CONNECTOR	26351-059	---	1
13	STREET ELBOW	RS06	11999	1
14	PULLEY	24226-006	---	1
15	BUSHING	24131-611	---	1
16	SHAFT EXTENSION	31412-070	15000	1
17	HEX HD CAPSCREW	22645-164	---	1
18	KEY	24113-601	---	1
19	PIPE PLUG	P08	15079	1
20	A/C KNOB	38429-501	19220	1

**For U.S. and International Warranty Information,  
Please Visit [www.grpumps.com/warranty](http://www.grpumps.com/warranty)  
or call:  
U.S.: 419-755-1280  
International: +1-419-755-1352**

**For Canadian Warranty Information,  
Please Visit [www.grcanada.com/warranty](http://www.grcanada.com/warranty)  
or call:  
519-631-2870**