



PRIME-AIRE[®] SERIES
PUMP MODEL
PA12A60-B-E125 3P

MANUAL
PART 2 of 3

PARTS
LIST
WITH
PERFORMANCE CURVE

THE GORMAN-RUPP COMPANY • MANSFIELD, OHIO

GORMAN-RUPP OF CANADA LIMITED • ST. THOMAS, ONTARIO, CANADA Printed in U.S.A.

www.gormanrupp.com

©Copyright by the Gorman-Rupp Company

Register your new
Gorman-Rupp pump online at
www.grpumps.com

Valid serial number and e-mail address required.

RECORD YOUR PUMP MODEL AND SERIAL NUMBER

Please record your pump model and serial number in the spaces provided below. Your Gorman-Rupp distributor needs this information when you require parts or service.

Pump Model: _____

Serial Number: _____

PERFORMANCE CURVE – SECTION A

RECORDING MODEL AND SERIAL NUMBERS

Please record the pump model and serial number in the spaces provided below and in the separate Installation/Operation Manual accompanying your pump. Your Gorman-Rupp distributor needs this information when you require parts or service.

Pump Model: _____

Serial Number: _____

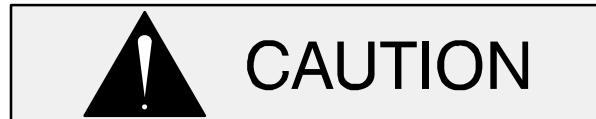
WARRANTY INFORMATION

The pump warranty is provided as part of Gorman-Rupp's support program for customers who operate and maintain their equipment as described in this manual and other accompanying literature. Please note that should the equipment be abused or modified to change its performance beyond the original factory specifications, the warranty will become void and any claim will be denied.

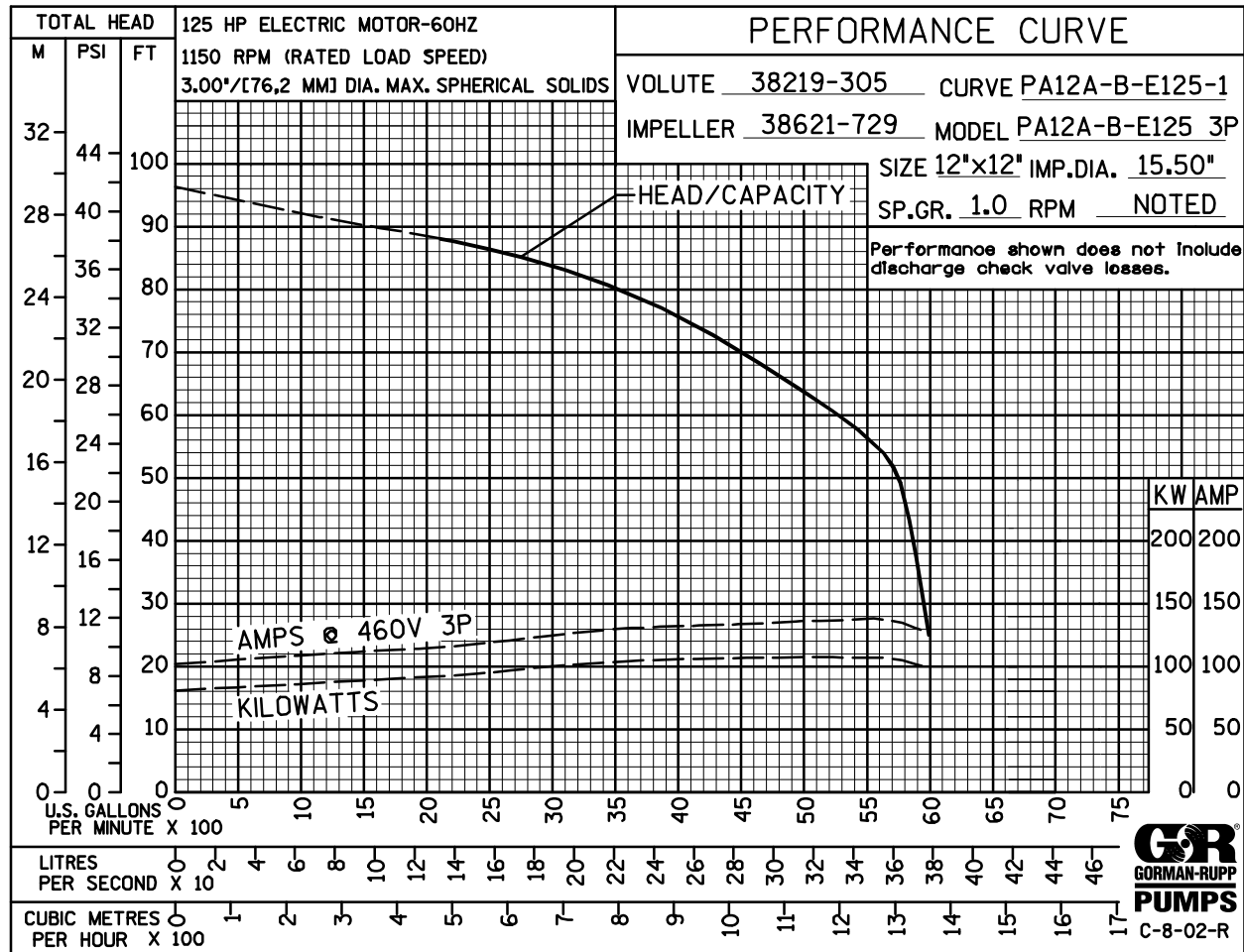
PERFORMANCE CURVE

The performance curve on the following page is based on 70° F (21° C) clear water at sea level with minimum suction lift. Since pump installations are seldom identical, your performance may be different due to such factors as viscosity, specific gravity, elevation, temperature, and impeller trim.

If your pump serial number is followed by an "N", your pump is **NOT** a standard production model. Contact the Gorman-Rupp Company to verify performance or part numbers.

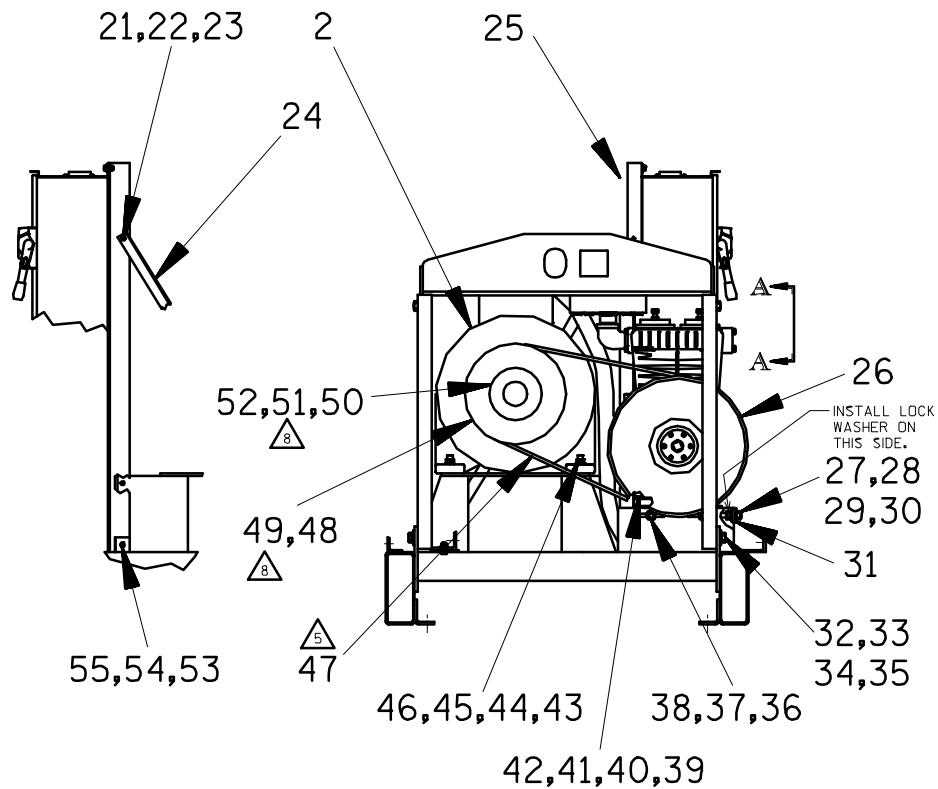
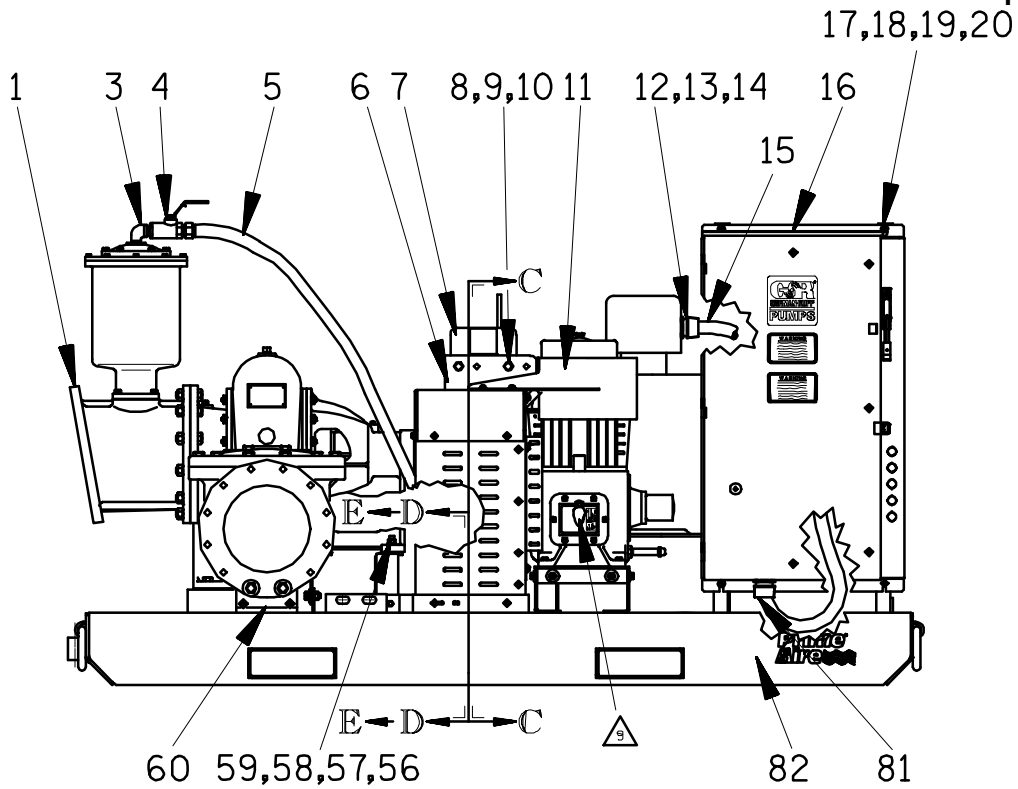


Pump speed and operating condition points must be within the continuous performance range shown on the curve.



Performance Curve – Model PA12A60-B-E125 3P

This Page Intentionally Blank



SECTION C-C

GUARD NOT SHOWN FOR CLARITY

THE GORMAN-RUPP COMPANY • MANSFIELD, OHIO

GORMAN-RUPP OF CANADA LIMITED • ST. THOMAS, ONTARIO, CANADA Printed in U.S.A.

S/N 1281594 Up
PUMP ISSUE 2

Pump Model Assembly

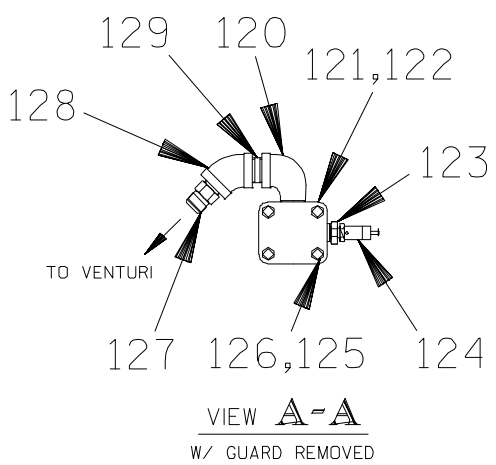
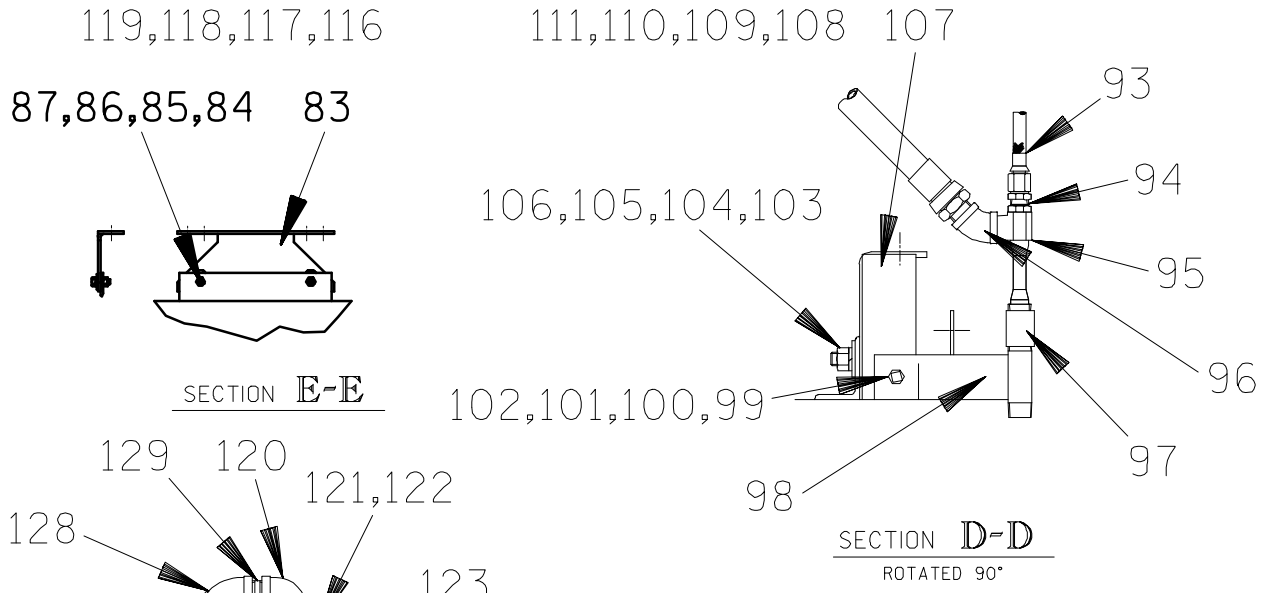
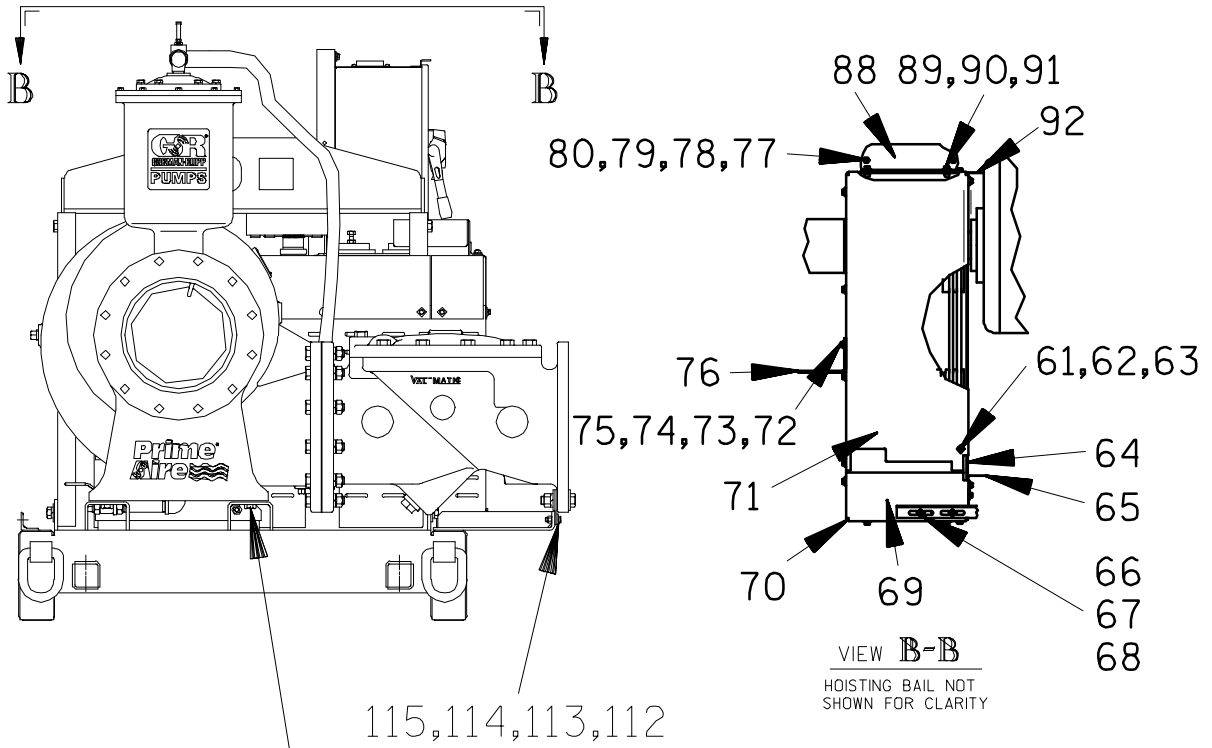
If your pump serial number is followed by an "N", your pump is **NOT** a standard production model. Contact the Gorman-Rupp Company to verify part numbers.

ITEM NO.	PART NAME	PART NUMBER	MAT'L CODE	QTY	ITEM NO.	PART NAME	PART NUMBER	MAT'L CODE	QTY
1	PUMP ASSEMBLY	PA12A60—B	----	1	31	AIR COMP BRKT ASSY	41881—758	24150	1
2	125 HP MOTOR	28269—401	----	1	32	HEX HD CAPSCREW	B1208	15991	4
3	STREET ELBOW	RS16	11999	1	33	LOCK WASHER	J12	15991	4
4	BALL VALVE	26631—054	----	1	34	FLAT WASHER	K12	15991	4
5	VACUUM HOSE ASSY	46341—021	----	1	35	HEX NUT	D12	15991	4
6	BAIL STRAP	34226—033	15080	2	36	HEX HD CAPSCREW	B0806	15991	4
7	LIFTING BAIL ASSY	44718—033	24150	1	37	FLAT WASHER	K08	15991	4
8	HEX HD CAPSCREW	B1207	15991	4	38	LOCK WASHER	J08	15991	4
9	LOCK WASHER	J12	15991	4	39	HEX HD CAPSCREW	B0809	15991	4
10	HEX NUT	D12	15991	4	40	FLAT WASHER	K08	15991	4
11	GUARD ASSY	42381—078	24150	1	41	LOCK WASHER	J08	15991	4
12	REDUCING WASHER	27141—324	----	2	42	HEX NUT	D08	15991	4
13	CONNECTOR	27184—176	----	1	43	HEX HD CAPSCREW	B1211	15991	4
14	MTR CABLE INST ASSY	47117—002	----	1	44	FLAT WASHER	K12	15991	4
15	CONT BOX/MTR CABLE	47325—014	----	1	45	LOCK WASHER	J12	15991	4
16	CONTROL BOX	27515—307	----	1	46	HEX NUT	D12	15991	4
17	HEX HD CAPSCREW	B0603—1/2	15991	4	47	AIR COMP DRIVE BELT	5VX10000	----	2
18	FLAT WASHER	K06	15991	4	48	SHEAVE	24226—008	----	1
19	LOCK WASHER	J06	15991	4	49	BUSHING	24131—381	----	1
20	HEX NUT	K06	15991	4	50	COUPLING	24341—101	----	1
21	HEX HD CAPSCREW	B0604	15991	2	51	PUMP BUSHING	24131—383	----	1
22	LOCK WASHER	J06	15991	2	52	HEX HD CAPSCREW	B0604	15991	3
23	HEX NUT	D06	15991	2	53	LOCK WASHER	J06	15991	3
24	BRACE	36311—202	15080	1	54	HEX NUT	D06	15991	3
25	SUPPORT	36331—201	150080	2	55	MOTOR BUSHING	24131—381	----	1
26	AIR COMPRESSOR	46181—901	----	1	56	HEX HD CAPSCREW	B1210	15991	4
27	ADJ SCREW ASSY	41111—449	24150	2	57	LOCK WASHER	J12	15991	4
28	FLAT WASHER	K10	15991	4	58	FLAT WASHER	K12	15991	4
29	LOCK WASHER	J10	15991	2	59	HEX NUT	D12	15991	4
30	HEX NUT	D10	15991	2	60	CHECK VALVE SUPPORT	33643—131	15080	1

THE GORMAN-RUPP COMPANY • MANSFIELD, OHIO

GORMAN-RUPP OF CANADA LIMITED • ST. THOMAS, ONTARIO, CANADA

Printed in U.S.A.



THE GORMAN-RUPP COMPANY • MANSFIELD, OHIO

GORMAN-RUPP OF CANADA LIMITED • ST. THOMAS, ONTARIO, CANADA Printed in U.S.A.

S/N 1281594 Up
PUMP ISSUE 2

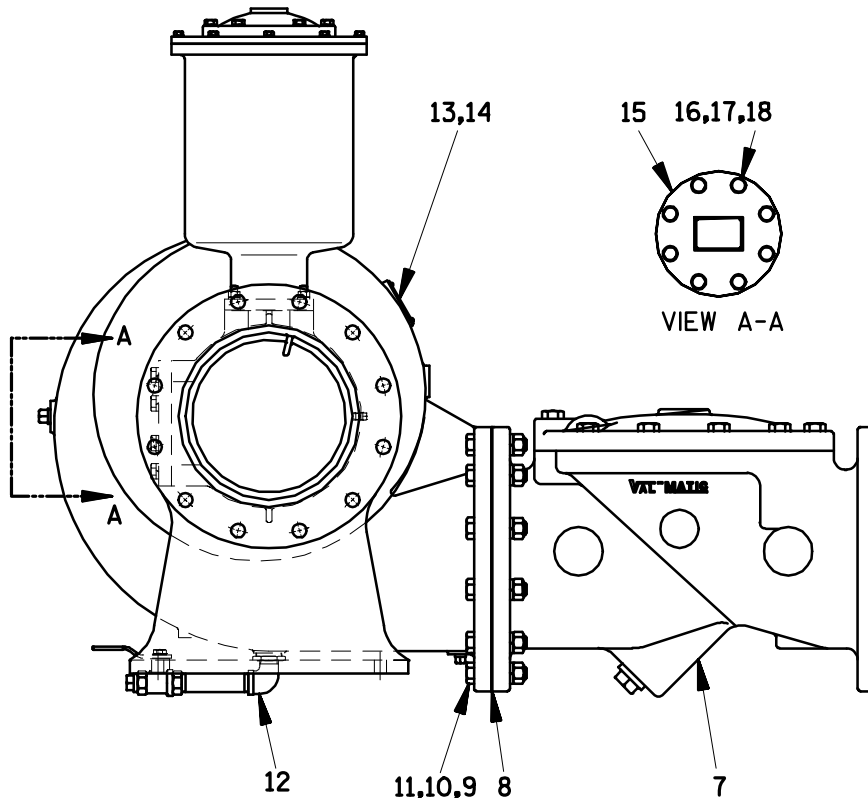
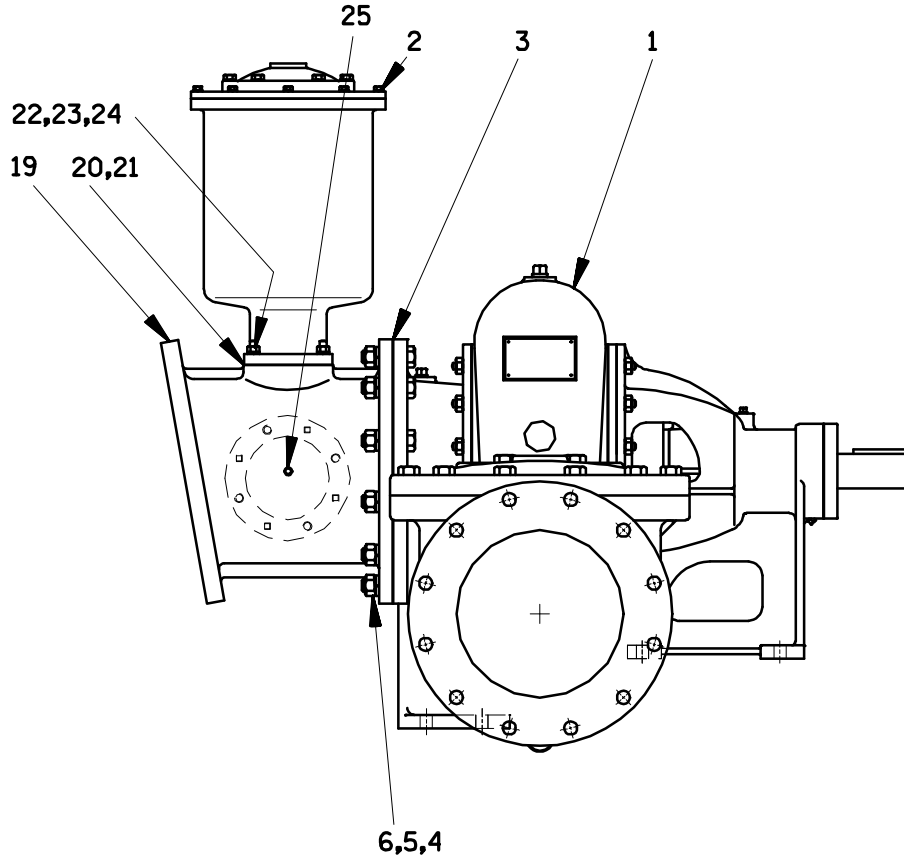
Pump Model Assembly

ITEM NO.	PART NAME	PART NUMBER	MAT'L CODE	QTY	ITEM NO.	PART NAME	PART NUMBER	MAT'L CODE	QTY
61	HEX HD CAPSCREW	B0604	15991	24	104	LOCK WASHER	J12	15991	2
62	FLAT WASHER	K06	15991	24	105	FLAT WASHER	K12	15991	4
63	LOCK WASHER	J06	15991	24	106	HEX NUT	D12	15991	2
64	GUARD ASSY	42381—080	---	1	107	MTG BRACKET ASSY	41881—757	24150	1
65	GUARD	34268—009	15120	1	108	HEX HD CAPSCREW	B1413	15991	2
66	HEX HD CAPSCREW	B0605	15991	2	109	LOCK WASHER	J14	15991	2
67	LOCK WASHER	J06	15991	2	110	FLAT WASHER	K14	15991	4
68	FLAT WASHER	K06	15991	2	111	HEX NUT	D14	15991	2
69	GUARD ASSY	42381—079	---	1	112	HEX HD CAPSCREW	B0706	15991	2
70	GUARD ASSY	42381—082	---	1	113	LOCK WASHER	J07	15991	2
71	GUARD	34851—294	15120	1	114	FLAT WASHER	K07	15991	4
72	HEX HD CAPSCREW	B0605	15991	2	115	HEX NUT	D07	15991	2
73	FLAT WASHER	K06	15991	3	116	HEX HD CAPSCREW	B1211	15991	4
74	LOCK WASHER	J06	15991	2	117	LOCK WASHER	J12	15991	4
75	HEX NUT	K06	15991	2	118	FLAT WASHER	K12	15991	4
76	GUARD SUPPORT	34261—024	15120	1	119	HEX NUT	D112	15991	4
77	HEX HD CAPSCREW	B0605	15991	2	120	STREET ELBOW	RS12	11999	1
78	FLAT WASHER	K06	15991	4	121	DISTRIBUTION BLOCK	38346—616	10000	1
79	LOCK WASHER	J06	15991	2	122	GASKET	26813—908	---	1
80	HEX NUT	K06	15991	2	123	RED PIPE BUSHING	AP1204	15079	1
81	CONNECTOR	27184—176	---	1	124	PRESS RELIEF VALVE	26662—027	---	1
82	BASE ASSY	41568—002	24150	1	125	HEX HD CAPSCREW	B0709	15991	4
83	MTG BRACKET	34715—126	15080	1	126	LOCK WASHER	J07	15991	4
84	HEX HD CAPSCREW	B1006—1/2	15991	2	127	MALE ADAPTOR	26341—108	---	1
85	LOCK WASHER	J10	15991	2	128	45° ELBOW	AG12	11999	1
86	FLAT WASHER	K10	15991	2	129	NIPPLE	T12	15079	1
87	HEX NUT	D10	15991	2		NOT SHOWN:			
88	BRACKET	34226—093	15080	1		STRAINER	46641—012	24150	1
89	HEX HD CAPSCREW	B0605	15991	4		CABLE TIE	27111—218	---	1
90	FLAT WASHER	K06	15991	4		KEY	24113—602	---	1
91	LOCK WASHER	J06	15991	4		PRIME AIRE DECAL	38812—078	---	3
92	GUARD ASSY	42381—081	---	1		GUARD WARNING STCKR	38816—063	---	2
93	AIR COMP HOSE ASSY	46341—023	---	1		6" G-R DECAL	GR—06	---	1
94	HOSE FITTING	26341—128	---	1		WARNING DECAL	38816—330	---	3
95	VENTURI	26817—001	---	1		WARNING DECAL	38816—218	---	2
96	45° ELBOW	AG16	11999	1		GUARD DECAL	38816—062	---	1
97	PIPE COUPLING	AE16	15079	1		WARNING DECAL	2613FF	---	1
98	BRACKET ASSY	41881—759	24150	1		INSTRUCTION DECAL	38816—331	---	1
99	HEX HD CAPSCREW	B0805	15991	1		460 VOLT TAG	38816—460	---	1
100	LOCK WASHER	J08	15991	1		OPTIONAL:			
101	HEX NUT	D08	15991	1		WHEEL KIT	GRP30—256	---	1
102	FLAT WASHER	K08	15991	1					
103	HEX HD CAPSCREW	B1209	15991	2					

* INDICATES PARTS RECOMMENDED FOR STOCK

THE GORMAN-RUPP COMPANY • MANSFIELD, OHIO

GORMAN-RUPP OF CANADA LIMITED • ST. THOMAS, ONTARIO, CANADA Printed in U.S.A.



THE GORMAN-RUPP COMPANY • MANSFIELD, OHIO

GORMAN-RUPP OF CANADA LIMITED • ST. THOMAS, ONTARIO, CANADA Printed in U.S.A.

S/N 1281594 Up
PUMP ISSUE 2

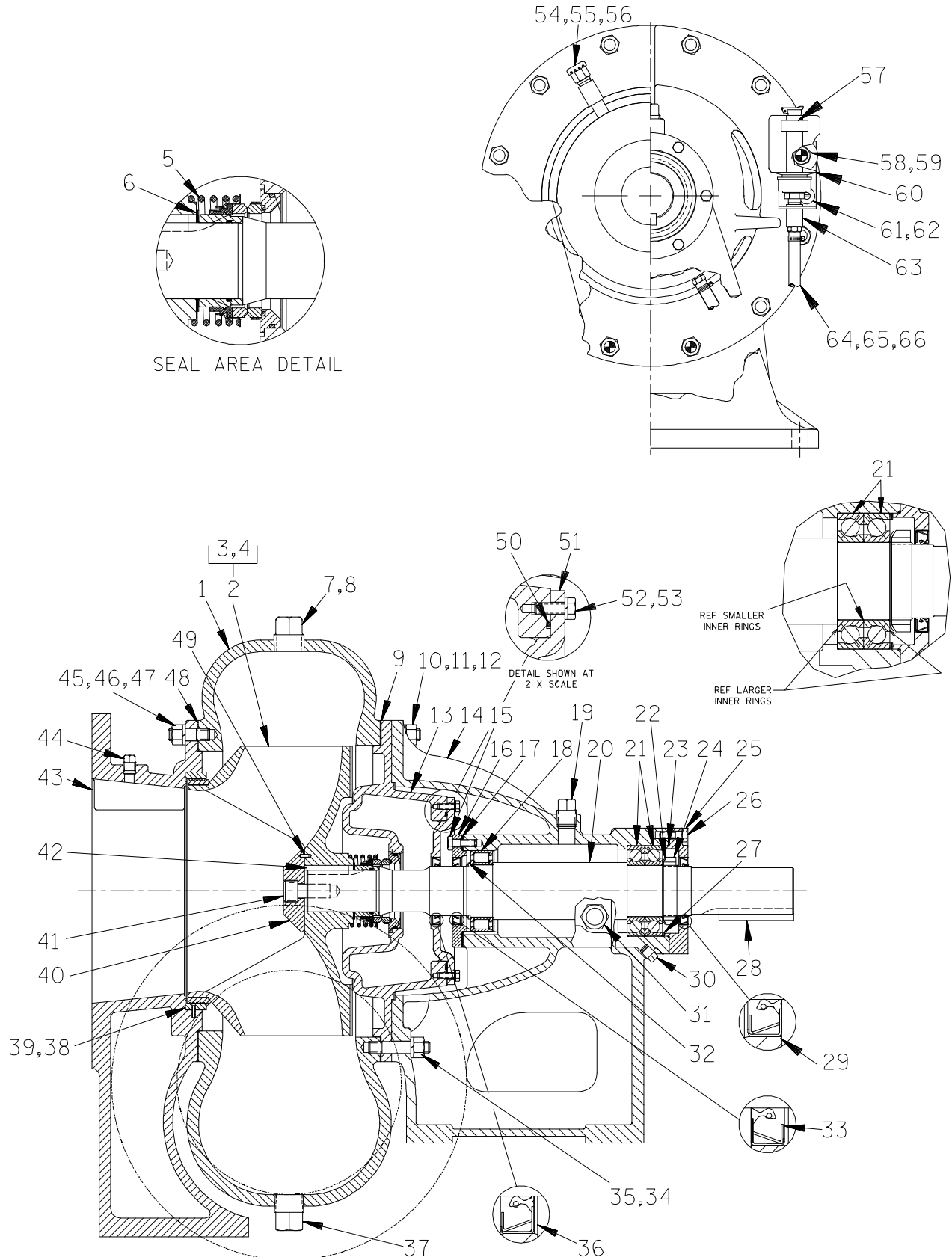
PARTS LIST
PA12A60—B Pump Model Assembly

ITEM NO.	PART NAME	PART NUMBER	MAT'L CODE	QTY
1	PUMP ASSEMBLY	612M60—B	---	1
2	PRIMING CHAMBER ASSEMBLY	46112—707	---	1
3	* FLANGE GASKET	4991G	18000	1
4	HEX HEAD CAPSCREW	B1413	15991	12
5	LOCK WASHER	J14	15991	12
6	HEX NUT	D14	15991	12
7	CHECK VALVE ASSEMBLY	26642—128	---	1
	* —FLAPPER	26688—003	---	1
	* —COVER GASKET	26688—004	---	1
8	* FLANGE GASKET	4991G	18000	1
9	HEX HEAD CAPSCREW	B1415	15991	12
10	LOCK WASHER	J14	15991	12
11	HEX NUT	D14	15991	12
12	DRAIN VALVE ASSEMBLY	46346—262	---	1
13	NAME PLATE	38818—127	13000	1
14	DRIVE SCREW	BM#04—03	17000	4
15	BLIND FLANGE ASSEMBLY	42111—358	---	1
16	HEX HEAD CAPSCREW	B1007	15991	8
17	LOCK WASHER	J10	15991	8
18	* FLANGE GASKET	25113—034	---	1
19	12" SUCTION SPOOL	38642—617	---	1
20	* GASKET	38687—053	19060	1
21	BAFFLE	31113—011	17000	1
22	HEX HEAD CAPSCREW	B0809	15991	4
23	LOCK WASHER	J08	15991	4
24	HEX NUT	D08	15991	4
25	PIPE PLUG	P04	15079	1

* INDICATES PARTS RECOMMENDED FOR STOCK

THE GORMAN-RUPP COMPANY • MANSFIELD, OHIO

GORMAN-RUPP OF CANADA LIMITED • ST. THOMAS, ONTARIO, CANADA Printed in U.S.A.



THE GORMAN-RUPP COMPANY • MANSFIELD, OHIO

GORMAN-RUPP OF CANADA LIMITED • ST. THOMAS, ONTARIO, CANADA

Printed in U.S.A.

S/N 1281594 Up
PUMP ISSUE 2

PARTS LIST
612M60—B Pump Assembly

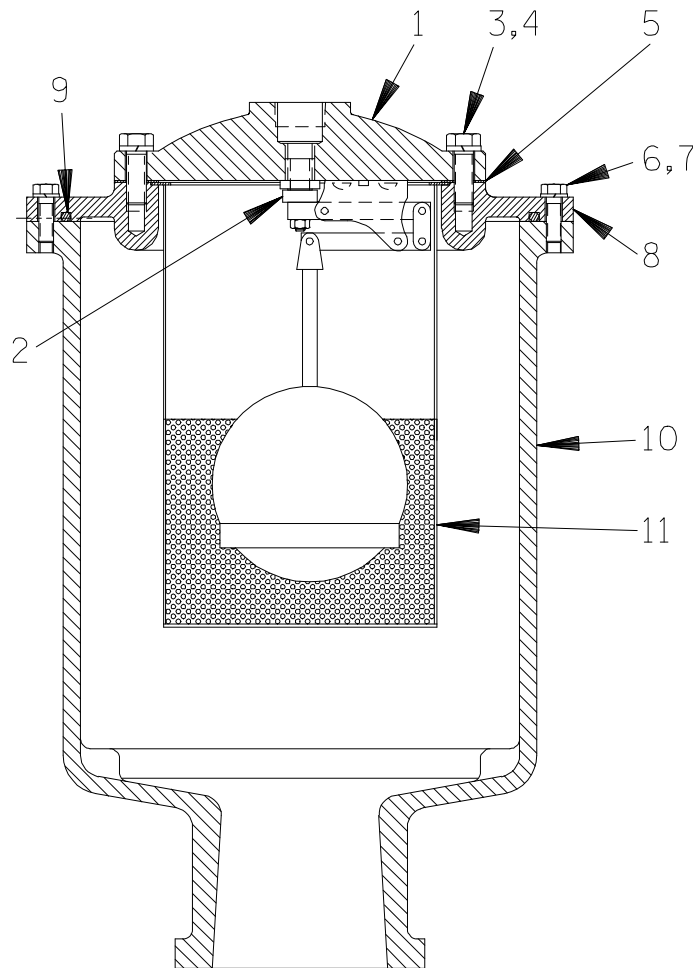
ITEM NO.	PART NAME	PART NUMBER	MAT'L CODE	QTY	ITEM NO.	PART NAME	PART NUMBER	MAT'L CODE	QTY
1	PUMP CASING	38219-305	10010	1	40	IMPELLER WASHER	31167-022	15030	1
2	IMPELLER/WR RING ASSY	46151-022	24110	1	41	SOCKET HD CAPSCREW	BD1206	15990	1
3	-IMPELLER	38621-729	11010	1	42 *	IMPELLER KEY	N0809	15990	1
4 *	-WEAR RING	4182A	11030	1	43	SUCTION HEAD	4180	10010	1
5 *	MECHANICAL SEAL	46512-109	----	1	44	PIPE PLUG	P06	15079	1
6 *	IMP ADJ SHIM SET	48261-033	----	1	45	STUD	C1009	15991	12
7	PIPE PLUG	P12	15079	2	46	HEX NUT	D10	15991	12
8	PIPE PLUG	P06	15079	1	47	LOCK WASHER	J10	15991	12
9 *	CASING GASKET	38674-434	18000	1	48 *	SUCTION HEAD GASKET	4180G	18000	1
10	STUD	C1011	15991	9	49	ROLL PIN	S2197	----	1
11	HEX NUT	D10	15991	9	50 *	COVER O-RING	25151-266	----	1
12	LOCK WASHER	J10	15991	9	51	SEAL PLATE COVER	38242-708	10000	1
13	SEAL PLATE	38272-717	10000	1	52	HEX HD CAPSCREW	J05	15991	6
14	PEDESTAL	38257-520	10000	1	53	LOCK WASHER	B0503-1/2	15991	6
15	HEX HD CAPSCREW	B0605	15991	6	54	AIR VENT	S1703	----	1
16	BEARING CAP	38322-425	10010	1	55	PIPE NIPPLE	T0608	15079	1
17 *	BEARING CAP GASKET	4184G	18000	1	56	PIPE COUPLING	AE06	15079	1
18 *	ROLLER BEARING	23528-005	----	1	57	OIL LEVEL DECAL	38816-123	----	1
19	VENTED PIPE PLUG	38649-009	15079	1	58	FLAT WASHER	K10	15991	1
20 *	IMPELLER SHAFT	38512-522	17040	1	59	LOCK WASHER	J10	15991	1
21 *	BALL BEARING	23413-015	----	2	60	BOTTLE OILER	26713-004	----	1
22	LOCKING TAB WASHER	23962-515	----	1	61	RD HD MACHINE SCREW	X0405	15991	2
23 *	BEARING CAP O-RING	25152-249	----	1	62	LOCK WASHER	J04	15991	2
24	BEARING LOCKNUT	23962-015	----	1	63	BOTTLE OILER BRKT	41881-811	24150	1
25	BEARING CAP	38322-429	10000	1	64	MALE CONNECTOR	26523-409	----	2
26	HEX HD CAPSCREW	B0605	15991	6	65	3/8" I.D. X 11" LG HOSE	18513-054	----	1
27 *	SHIM SET	48261-055	----	1	66	HOSE CLAMP	26518-642	----	2
28 *	SHAFT KEY	N1016	15990	1	NOT SHOWN:				
29 *	BEARING CAP OIL SEAL	25258-845	----	1		STRAINER	46641-012	24150	1
30	PIPE PLUG	P04	15079	1		INSTRUCTION TAG	38817-024	----	1
31	SIGHT GAUGE	S1471	----	2		SUCTION DECAL	6588AG	----	1
32	RETAINING RING	24124-057	----	1		DISCHARGE DECAL	6588BJ	----	1
33 *	BEARING CAP OIL SEAL	25258-845	----	1		LUBRICATION DECAL	38816-079	----	2
34	STUD	C1013	15991	3		ROTATION DECAL	2613M	----	1
35	HEX NUT	D10	15991	3		INSTRUCTION TAG	38817-011	----	1
36 *	SEAL PLATE OIL SEAL	25258-845	----	1		G-R DECAL	GR-03	----	1
37	PIPE PLUG	P24	10009	1		WARNING DECAL	2613FE	----	1
38 *	SUCT HEAD WEAR RING	4181A	14000	1		NAME PLATE	2613D	13990	1
39	SPIRAL PIN	21137-123	----	3		DRIVE SCREW	BM#04-03	17000	4

* INDICATES PARTS RECOMMENDED FOR STOCK

THE GORMAN-RUPP COMPANY • MANSFIELD, OHIO

GORMAN-RUPP OF CANADA LIMITED • ST. THOMAS, ONTARIO, CANADA

Printed in U.S.A.



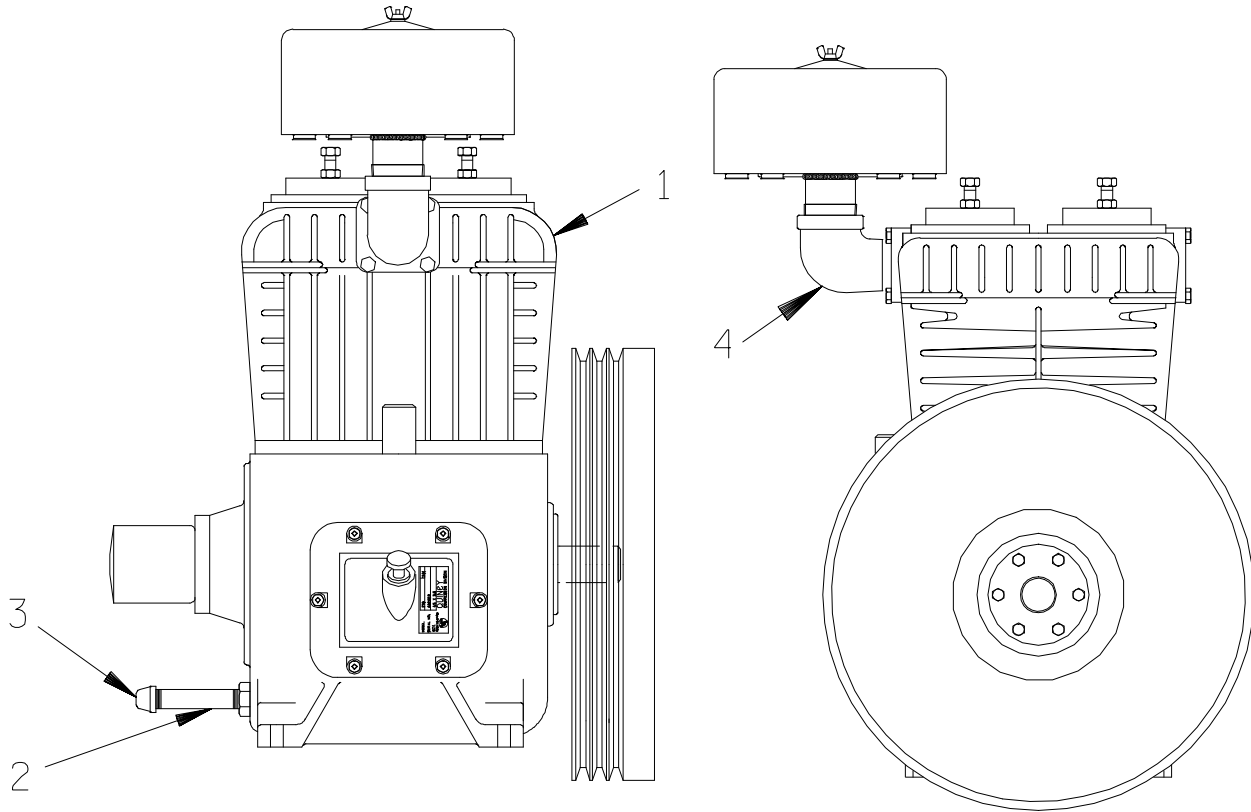
PARTS LIST
46112-707 Priming Chamber

ITEM NO.	PART NAME	PART NUMBER	MAT'L CODE	QTY
1	PRIMING VALVE	26664-007	---	1
2	ORIFICE BUTTON	26688-021	---	REF
3	HEX HD CAPSCREW	B0806	15991	8
4	LOCK WASHER	J08	15991	8
5	* PRIMING VALVE GSKT	38683-657	19060	1
6	HEX HD CAPSCREW	B0605	15991	12
7	LOCK WASHER	J06	15991	12
8	PRIMING CHAMBER LID	38346-618	10000	1
9	* LINEAR O-RING	38689-040	19060	1
10	PRIMING CHAMBER	38343-018	10000	1
11	STRAINER ASSY	46641-222	17000	1

* INDICATES PARTS RECOMMENDED FOR STOCK

THE GORMAN-RUPP COMPANY • MANSFIELD, OHIO

GORMAN-RUPP OF CANADA LIMITED • ST. THOMAS, ONTARIO, CANADA Printed in U.S.A.



PARTS LIST
Air Compressor Assembly

ITEM NO.	PART NAME	PART NUMBER	MAT'L CODE	QTY
1	AIR COMPRESSOR	26813-101	---	1
*	-AIR FILTER	29334-072	---	1
2	PIPE NIPPLE	T0818	15079	1
3	PIPE CAP	V08	15079	1
4	ST ELBOW	RS32	11999	1

* INDICATES PARTS RECOMMENDED FOR STOCK

THE GORMAN-RUPP COMPANY • MANSFIELD, OHIO

GORMAN-RUPP OF CANADA LIMITED • ST. THOMAS, ONTARIO, CANADA Printed in U.S.A.

**For U.S. and International Warranty Information,
Please Visit www.grpumps.com/warranty
or call:
U.S.: 419-755-1280
International: +1-419-755-1352**

**For Canadian Warranty Information,
Please Visit www.grcanada.com/warranty
or call:
519-631-2870**