



*PRIME-AIRE*<sup>®</sup> SERIES  
PUMP MODEL  
PA12A60-B-E125 3P

**MANUAL**  
**PART 2 of 3**

**PARTS**  
**LIST**  
**WITH**  
**PERFORMANCE CURVE**

THE GORMAN-RUPP COMPANY D MANSFIELD, OHIO

GORMAN-RUPP OF CANADA LIMITED D ST. THOMAS, ONTARIO, CANADA Printed in U.S.A.

[www.gormanrupp.com](http://www.gormanrupp.com)

© Copyright by the Gorman-Rupp Company

## PERFORMANCE CURVE – SECTION A

### RECORDING MODEL AND SERIAL NUMBERS

Please record the pump model and serial number in the spaces provided below and in the separate Installation/Operation Manual accompanying your pump. Your Gorman-Rupp distributor needs this information when you require parts or service.

Pump Model: \_\_\_\_\_

Serial Number: \_\_\_\_\_

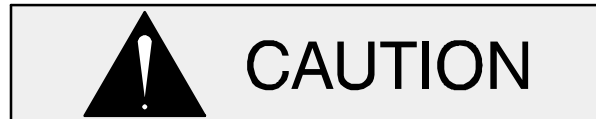
### WARRANTY INFORMATION

The pump warranty is provided as part of Gorman-Rupp's support program for customers who operate and maintain their equipment as described in this manual and other accompanying literature. Please note that should the equipment be abused or modified to change its performance beyond the original factory specifications, the warranty will become void and any claim will be denied.

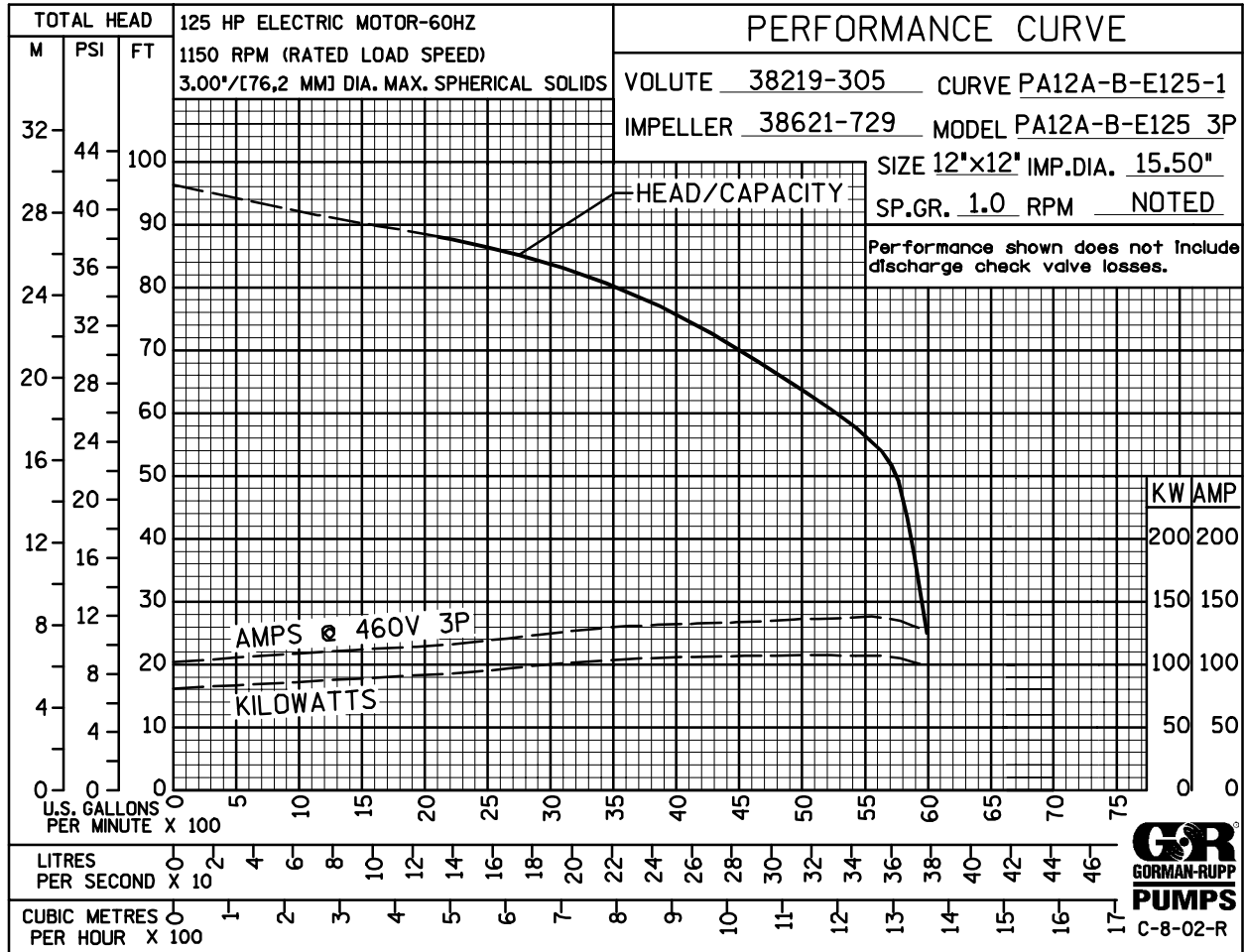
### PERFORMANCE CURVE

The performance curve on the following page is based on 70\_ F (21\_ C) clear water at sea level with minimum suction lift. Since pump installations are seldom identical, your performance may be different due to such factors as viscosity, specific gravity, elevation, temperature, and impeller trim.

If your pump serial number is followed by an "N", your pump is **NOT** a standard production model. Contact the Gorman-Rupp Company to verify performance or part numbers.

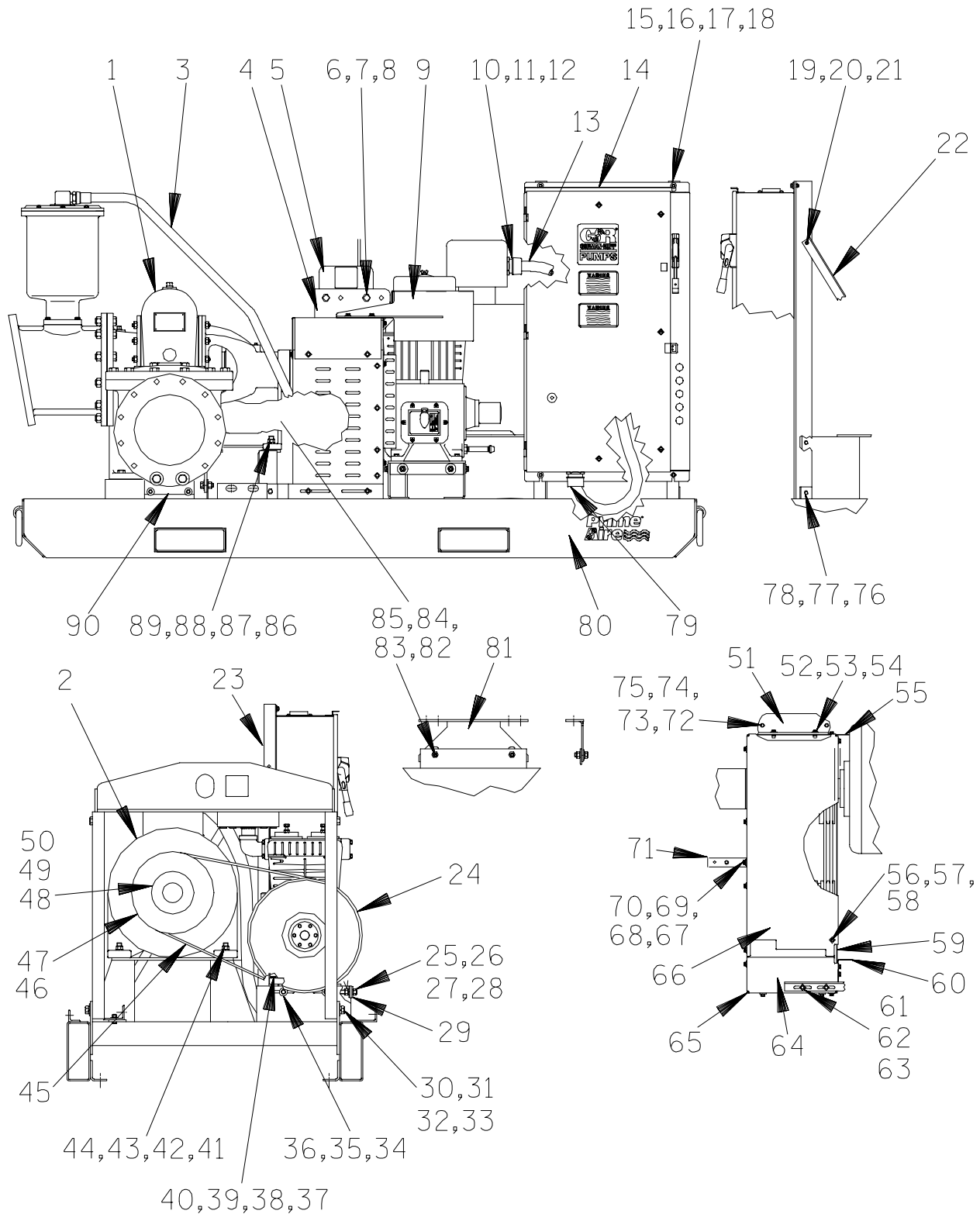


Pump speed and operating condition points must be within the continuous performance range shown on the curve.



Performance Curve – Model PA12A60-B-E125 3P

This Page Intentionally Blank



**THE GORMAN-RUPP COMPANY D MANSFIELD, OHIO**

GORMAN-RUPP OF CANADA LIMITED D ST. THOMAS, ONTARIO, CANADA Printed in U.S.A.

November 8, 2002

©Copyright by the Gorman-Rupp Company

1 of 13

Page 64.12 A4

S/N 1255204 Up  
PUMP ISSUE 1

Pump Model Assembly

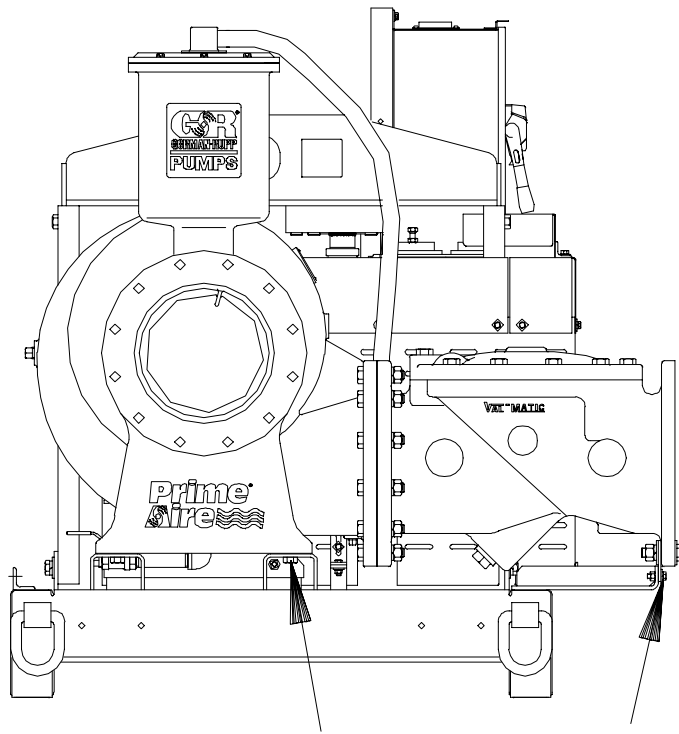
If your pump serial number is followed by an "N", your pump is NOT a standard production model. Contact the Gorman-Rupp Company to verify part numbers.

| ITEM NO. | PART NAME            | PART NUMBER | MAT'L CODE | QTY | ITEM NO. | PART NAME             | PART NUMBER | MAT'L CODE | QTY |
|----------|----------------------|-------------|------------|-----|----------|-----------------------|-------------|------------|-----|
| 1        | PUMP ASSEMBLY        | PA12A60-B   | ---        | 1   | 46       | SHEAVE                | 24226-008   | ---        | 1   |
| 2        | MOTOR 125 HP         | 28269-401   | ---        | 1   | 47       | BUSHING               | 24131-381   | ---        | 1   |
| 3        | VACUUM HOSE ASSY     | 46341-021   | ---        | 1   | 48       | COUPLING              | 24341-101   | ---        | 1   |
| 4        | BAIL STRAP           | 34266-033   | 15080      | 2   | 49       | BUSHING - PUMP        | 24131-383   | ---        | 1   |
| 5        | LIFTING BAIL ASSY    | 44718-033   | 24150      | 1   | 50       | BUSHING - MOTOR       | 24131-381   | ---        | 1   |
| 6        | HEX HD CAPSCREW      | B1207       | 15991      | 4   | 51       | BRACKET               | 36375-002   | 15080      | 1   |
| 7        | LOCK WASHER          | J12         | 15991      | 4   | 52       | HEX HD CAPSCREW       | B0605       | 15991      | 4   |
| 8        | HEX NUT              | D12         | 15991      | 4   | 53       | FLAT WASHER           | K06         | 15991      | 4   |
| 9        | GUARD ASSY           | 42381-078   | 24150      | 1   | 54       | LOCK WASHER           | J06         | 15991      | 4   |
| 10       | REDUCING WASHER      | 27141-324   | ---        | 2   | 55       | GUARD ASSY            | 42381-081   | ---        | 1   |
| 11       | CONNECTOR            | 27184-176   | ---        | 1   | 56       | HEX HD CAPSCREW       | B0604       | 15991      | 24  |
| 12       | CABLE INSTALL ASSY   | 47117-002   | ---        | 1   | 57       | FLAT WASHER           | K06         | 15991      | 24  |
| 13       | CONTRL BOX/MTR CABLE | 47325-014   | ---        | 1   | 58       | LOCK WASHER           | J06         | 15991      | 24  |
| 14       | CONTROL BOX          | 27515-307   | ---        | 1   | 59       | GUARD ASSY            | 42381-080   | ---        | 1   |
| 15       | HEX HD CAPSCREW      | B0603-1/2   | 15991      | 4   | 60       | GUARD                 | 34268-009   | 15120      | 1   |
| 16       | FLAT WASHER          | K06         | 15991      | 4   | 61       | HEX HD CAPSCREW       | B0605       | 15991      | 2   |
| 17       | LOCK WASHER          | J06         | 15991      | 4   | 62       | LOCK WASHER           | J06         | 15991      | 2   |
| 18       | HEX NUT              | D06         | 15991      | 4   | 63       | FLAT WASHER           | K06         | 15991      | 2   |
| 19       | HEX HD CAPSCREW      | B0604       | 15991      | 2   | 64       | GUARD ASSY            | 42381-079   | ---        | 1   |
| 20       | LOCK WASHER          | J06         | 15991      | 2   | 65       | GUARD ASSY            | 42381-082   | ---        | 1   |
| 21       | HEX NUT              | D06         | 15991      | 2   | 66       | GUARD                 | 34851-294   | 15120      | 1   |
| 22       | BRACE                | 36311-202   | 15080      | 1   | 67       | HEX HD CAPSCREW       | B0605       | 15991      | 2   |
| 23       | SUPPORT              | 36331-201   | 15080      | 2   | 68       | FLAT WASHER           | K06         | 15991      | 3   |
| 24       | AIR COMPRESSOR       | 46181-901   | ---        | 1   | 69       | LOCK WASHER           | J06         | 15991      | 2   |
| 25       | ADJ SCREW ASSY       | 41111-449   | 24150      | 2   | 70       | HEX NUT               | D06         | 15991      | 2   |
| 26       | FLAT WASHER          | K10         | 15991      | 4   | 71       | BRACKET               | 34127-089   | 15080      | 1   |
| 27       | LOCK WASHER          | J10         | 15991      | 2   | 72       | HEX HD CAPSCREW       | B0605       | 15991      | 2   |
| 28       | HEX NUT              | D10         | 15991      | 2   | 73       | FLAT WASHER           | K06         | 15991      | 2   |
| 29       | A/C BRACKET ASSY     | 41881-758   | 24150      | 1   | 74       | LOCK WASHER           | J06         | 15991      | 2   |
| 30       | HEX HD CAPSCREW      | B1208       | 15991      | 4   | 75       | HEX NUT               | D06         | 15991      | 2   |
| 31       | LOCKWASHER           | J12         | 15991      | 4   | 76       | HEX HD CAPSCREW       | B0604       | 15991      | 3   |
| 32       | FLAT WASHER          | K12         | 15991      | 4   | 77       | LOCK WASHER           | J06         | 15991      | 3   |
| 33       | HEX NUT              | D12         | 15991      | 4   | 78       | HEX NUT               | D06         | 15991      | 3   |
| 34       | HEX HD CAPSCREW      | B0806       | 15991      | 4   | 79       | CONNECTOR             | 27184-176   | ---        | 1   |
| 35       | FLAT WASHER          | K08         | 15991      | 4   | 80       | FLEX SKID V-BELT BASE | 41568-002   | 24150      | 1   |
| 36       | LOCK WASHER          | J08         | 15991      | 4   | 81       | MTG BRACKET           | 34715-126   | 15080      | 1   |
| 37       | HEX HD CAPSCREW      | B0809       | 15991      | 4   | 82       | HEX HD CAPSCREW       | B1006-1/2   | 15991      | 2   |
| 38       | FLAT WASHER          | K08         | 15991      | 4   | 83       | LOCK WASHER           | J10         | 15991      | 2   |
| 39       | LOCK WASHER          | J08         | 15991      | 4   | 84       | FLAT WASHER           | K10         | 15991      | 2   |
| 40       | HEX NUT              | D08         | 15991      | 4   | 85       | HEX NUT               | D10         | 15991      | 2   |
| 41       | HEX HD CAPSCREW      | B1211       | 15991      | 4   | 86       | HEX HD CAPSCREW       | B1210       | 15991      | 4   |
| 42       | FLAT WASHER          | K12         | 15991      | 4   | 87       | LOCK WASHER           | J12         | 15991      | 4   |
| 43       | LOCK WASHER          | J12         | 15991      | 4   | 88       | FLAT WASHER           | K12         | 15991      | 4   |
| 44       | HEX NUT              | D12         | 15991      | 4   | 89       | HEX NUT               | D12         | 15991      | 4   |
| 45       | BELT                 | 24166-013   | ---        | 2   | 90       | CHECK VALVE SUPPORT   | 33643-131   | 15080      | 1   |

THE GORMAN-RUPP COMPANY D MANSFIELD, OHIO

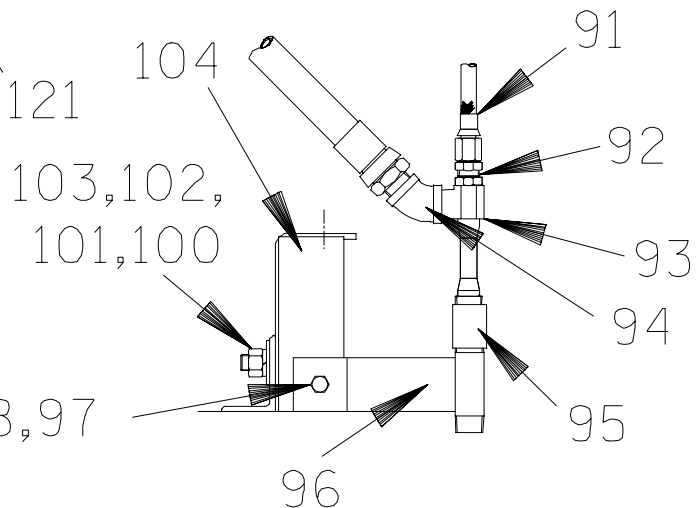
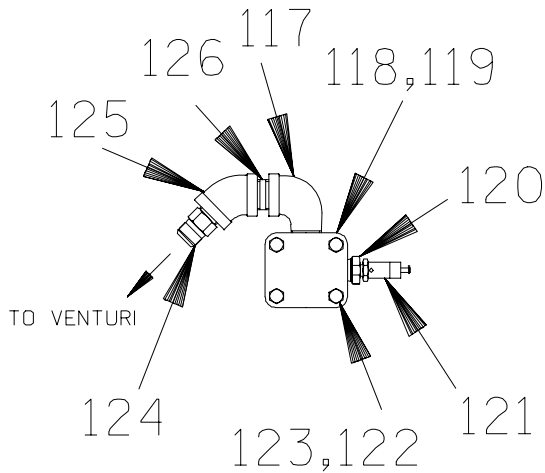
GORMAN-RUPP OF CANADA LIMITED D ST. THOMAS, ONTARIO, CANADA

Printed in U.S.A.



116,115,114,113

112,111,110,109  
108,107,106,105



**THE GORMAN-RUPP COMPANY D MANSFIELD, OHIO**

GORMAN-RUPP OF CANADA LIMITED D ST. THOMAS, ONTARIO, CANADA Printed in U.S.A.

S/N 1255204 Up  
PUMP ISSUE 1

## Pump Model Assembly

| ITEM NO. | PART NAME          | PART NUMBER | MAT'L CODE | QTY | ITEM NO.   | PART NAME          | PART NUMBER | MAT'L CODE | QTY |
|----------|--------------------|-------------|------------|-----|------------|--------------------|-------------|------------|-----|
| 91       | A/C HOSE ASSY      | 46341-023   | ---        | 1   | 121        | PRESS RELIEF VALVE | 26662-027   | ---        | 1   |
| 92       | HOSE FITTING       | 26341-128   | ---        | 1   | 122        | HEX HD CAPSCREW    | B0709       | 15991      | 4   |
| 93       | VENTURI            | 26817-001   | ---        | 1   | 123        | LOCK WASHER        | J07         | 15991      | 4   |
| 94       | 45_ ELBOW          | AG16        | 11999      | 1   | 124        | MALE ADAPTOR       | 26341-108   | ---        | 1   |
| 95       | PIPE COUPLING      | AE16        | 15079      | 1   | 125        | 45_ ELBOW          | AG12        | 11999      | 1   |
| 96       | BRACKET ASSY       | 41881-759   | 24150      | 1   | 126        | NIPPLE             | T12         | 15079      | 1   |
| 97       | HEX HD CAPSCREW    | B0804       | 15991      | 1   | NOT SHOWN: |                    |             |            |     |
| 98       | LOCK WASHER        | J08         | 15991      | 1   |            | STRAINER           | 46641-012   | 24150      | 1   |
| 99       | HEX NUT            | D08         | 15991      | 1   |            | CABLE TIE          | 27111-218   | ---        | 1   |
| 100      | HEX HD CAPSCREW    | B1207       | 15991      | 2   |            | PRIME AIRE DECAL   | 38812-078   | ---        | 3   |
| 101      | LOCK WASHER        | J12         | 15991      | 2   |            | GURD WARNING STCKR | 38816-063   | ---        | 2   |
| 102      | FLAT WASHER        | K12         | 15991      | 2   |            | 6" G-R DECALS      | GR-06       | ---        | 1   |
| 103      | HEX NUT            | D12         | 15991      | 2   |            | LUBE DECAL         | 38816-079   | ---        | 2   |
| 104      | MTG BRACKET ASSY   | 41881-757   | 24150      | 1   |            | ROTATION DECAL     | 2613M       | ---        | 1   |
| 105      | HEX HD CAPSCREW    | B1413       | 15991      | 2   |            | WARNING DECAL      | 38816-330   | ---        | 3   |
| 106      | LOCK WASHER        | J14         | 15991      | 2   |            | WARNING DECAL      | 38816-218   | ---        | 2   |
| 107      | FLAT WASHER        | K14         | 15991      | 4   |            | DISCHARGE STICKER  | 6588BJ      | ---        | 1   |
| 108      | HEX NUT            | D14         | 15991      | 2   |            | SUCTION STICKER    | 6588AG      | ---        | 1   |
| 109      | HEX HD CAPSCREW    | B0705       | 15991      | 2   |            | INSTRUCTION TAG    | 38817-024   | ---        | 1   |
| 110      | LOCK WASHER        | J07         | 15991      | 2   |            | WARNING DECAL      | 2613FE      | ---        | 2   |
| 111      | FLAT WASHER        | K07         | 15991      | 2   |            | GUARD DECAL        | 38816-062   | ---        | 1   |
| 112      | HEX NUT            | D07         | 15991      | 2   |            | WARNING DECAL      | 2613FF      | ---        | 1   |
| 113      | HEX HD CAPSCREW    | B1211       | 15991      | 4   |            | INSTRUCTION DECAL  | 38816-331   | ---        | 1   |
| 114      | LOCK WASHER        | J12         | 15991      | 4   |            | 460 VOLT TAG       | 38816-460   | ---        | 1   |
| 115      | FLAT WASHER        | K12         | 15991      | 4   |            | KEY                | 24113-602   | ---        | 1   |
| 116      | HEX NUT            | D12         | 15991      | 4   | OPTIONAL:  |                    |             |            |     |
| 117      | STREET ELBOW       | RS12        | 11999      | 1   |            | WHEEL KIT          | GRP30-256   | ---        | 1   |
| 118      | DISTRIBUTION BLOCK | 38346-616   | 10000      | 1   |            |                    |             |            |     |
| 119      | GASKET             | 26813-908   | ---        | 1   |            |                    |             |            |     |
| 120      | RED PIPE BUSHING   | AP1204      | 15079      | 1   |            |                    |             |            |     |

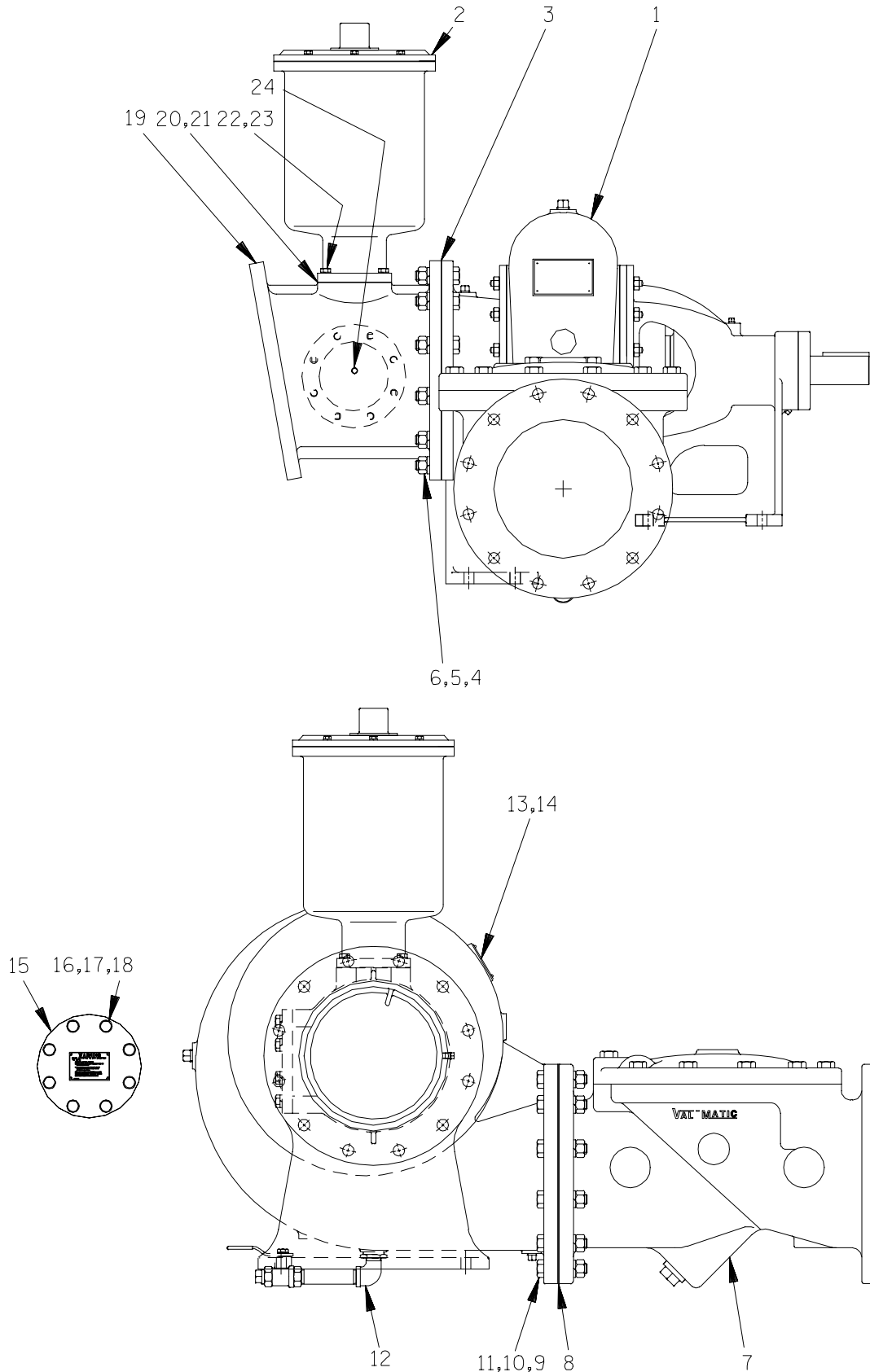
\* INDICATES PARTS RECOMMENDED FOR STOCK

THE GORMAN-RUPP COMPANY D MANSFIELD, OHIO

GORMAN-RUPP OF CANADA LIMITED D ST. THOMAS, ONTARIO, CANADA

Printed in U.S.A.





**THE GORMAN-RUPP COMPANY D MANSFIELD, OHIO**

GORMAN-RUPP OF CANADA LIMITED D ST. THOMAS, ONTARIO, CANADA Printed in U.S.A.

November 8, 2002

©Copyright by the Gorman-Rupp Company

5 of 13

Page 64.12 A4

S/N 1255204 Up  
PUMP ISSUE 1

**PARTS LIST**  
**PA12A60-B Pump Model Assembly**

| ITEM NO. | PART NAME             | PART NUMBER | MAT'L CODE | QTY |
|----------|-----------------------|-------------|------------|-----|
| 1        | PUMP ASSEMBLY         | 612M60-B    | ---        | 1   |
| 2        | PRIMING CHAMBER ASSY  | 46112-704   | ---        | 1   |
| 3        | * SUCT SPOOL GASKET   | 4991G       | 18000      | 1   |
| 4        | HEX HD CAPSCREW       | B1413       | 15991      | 12  |
| 5        | LOCKWASHER            | J14         | 15991      | 12  |
| 6        | HEX NUT               | D14         | 15991      | 12  |
| 7        | VALMATIC CHECK VALVE  | 26642-128   | ---        | 1   |
| 8        | * FLANGE GASKET       | 4991G       | 18000      | 1   |
| 9        | HEX HD CAPSCREW       | B1415       | 15991      | 12  |
| 10       | LOCKWASHER            | J14         | 15991      | 12  |
| 11       | HEX NUT               | D14         | 15991      | 12  |
| 12       | DRAIN VALVE ASSY      | 46346-262   | ---        | 1   |
| 13       | NAME PLATE            | 38818-127   | 13000      | 1   |
| 14       | DRIVE SCREW           | BM#04-03    | 17000      | 4   |
| 15       | BLIND FLANGE ASSY     | 42111-358   | ---        | 1   |
| 16       | HEX HD CAPSCREW       | B1006-1/2   | 15991      | 8   |
| 17       | LOCKWASHER            | J10         | 15991      | 8   |
| 18       | * BLIND FLANGE GASKET | 25113-034   | ---        | 1   |
| 19       | SPOOL FLANGE          | 38642-617   | 10000      | 1   |
| 20       | * BAFFLE GASKET       | 38687-053   | 19060      | 1   |
| 21       | BAFFLE                | 31113-011   | 17000      | 1   |
| 22       | HEX HD CAPSCREW       | B0807       | 15991      | 4   |
| 23       | LOCKWASHER            | J08         | 15991      | 4   |
| 24       | PIPE PLUG             | P04         | 15079      | 1   |

NOT SHOWN:

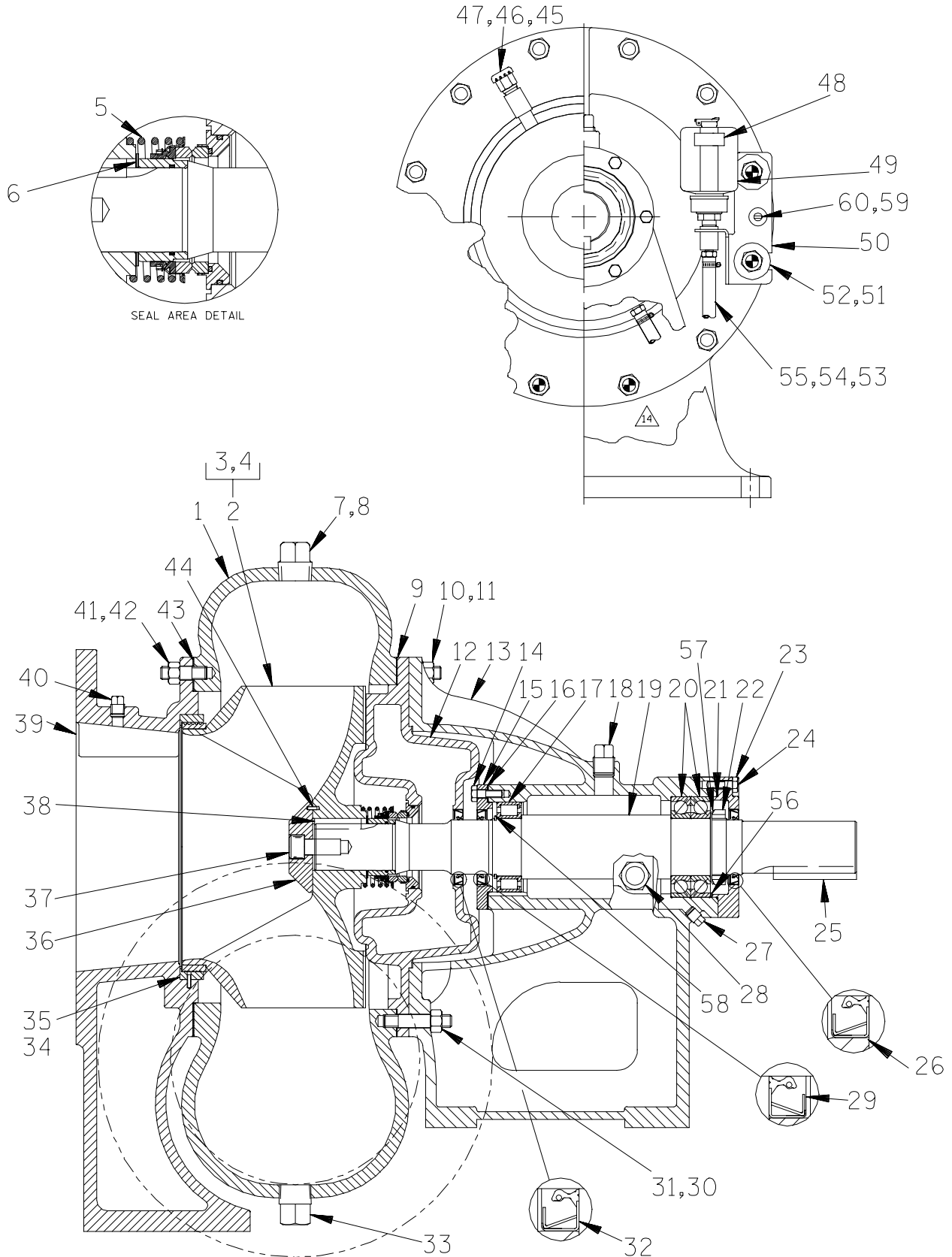
|          |           |       |   |
|----------|-----------|-------|---|
| STRAINER | 46641-012 | 24150 | 1 |
|----------|-----------|-------|---|

\* INDICATES PARTS RECOMMENDED FOR STOCK

**THE GORMAN-RUPP COMPANY D MANSFIELD, OHIO**

GORMAN-RUPP OF CANADA LIMITED D ST. THOMAS, ONTARIO, CANADA

Printed in U.S.A.



**THE GORMAN-RUPP COMPANY D MANSFIELD, OHIO**

GORMAN-RUPP OF CANADA LIMITED D ST. THOMAS, ONTARIO, CANADA Printed in U.S.A.

S/N 1255204 Up  
PUMP ISSUE 1

**PARTS LIST**  
**612M60-B Pump Assembly**

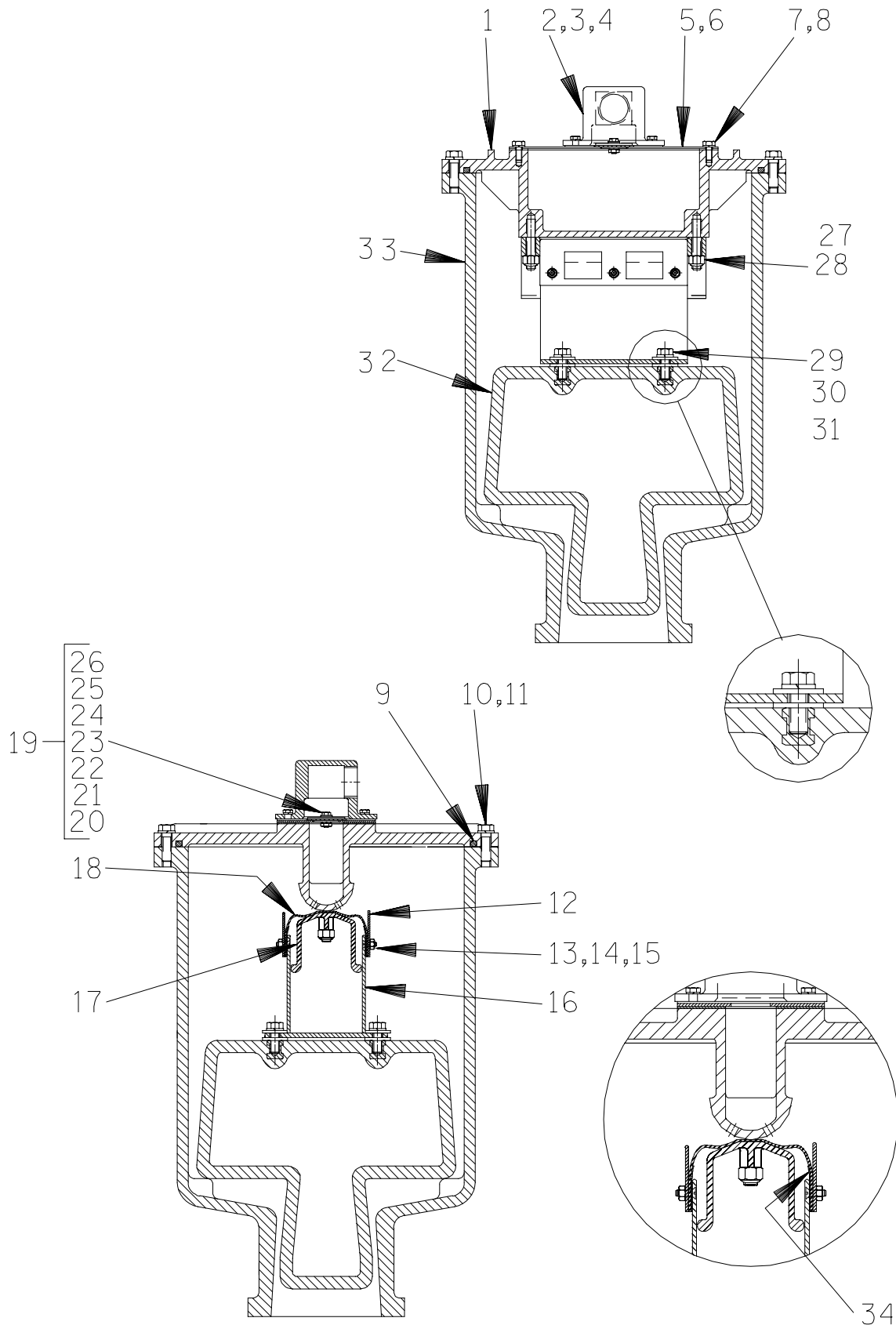
| ITEM NO. | PART NAME           | PART NUMBER | MAT'L CODE | QTY | ITEM NO.   | PART NAME          | PART NUMBER | MAT'L CODE | QTY  |
|----------|---------------------|-------------|------------|-----|------------|--------------------|-------------|------------|------|
| 1        | PUMP CASING         | 38219-305   | 10010      | 1   | 37         | SOC HD CAPSCREW    | BD1206      | 15990      | 1    |
| 2 *      | IMPELLER/WEAR RING  | 46151-022   | 24110      | 1   | 38         | IMPELLER KEY       | N0809       | 15990      | 1    |
| 3        | -IMPELLER           | 38621-729   | 11010      | 1   | 39         | SUCTION HEAD       | 4180        | 10010      | 1    |
| 4        | -WEAR RING          | 4182A       | 11030      | 1   | 40         | PIPE PLUG          | P06         | 15079      | 1    |
| 5 *      | SEAL ASSY           | 46512-109   | ---        | 1   | 41         | STUD               | C1009       | 15991      | 12   |
| 6        | IMP ADJ SHIM SET    | 48261-033   | ---        | REF | 42         | HEX NUT            | D10         | 15991      | 12   |
| 7        | PIPE PLUG           | P12         | 15079      | 2   | 43 *       | SUCTION HEAD GSKT  | 4180G       | 18000      | 1    |
| 8        | PIPE PLUG           | P06         | 15079      | 1   | 44 *       | ROLL PIN           | S2197       | ---        | 1    |
| 9 *      | CASING GSKT         | 38674-434   | 18000      | 1   | 45         | AIR VENT           | S1703       | ---        | 1    |
| 10       | STUD                | C1011       | 15991      | 8   | 46         | PIPE NIPPLE        | T0608       | 15079      | 1    |
| 11       | HEX NUT             | D10         | 15991      | 8   | 47         | PIPE COUPLING      | AE06        | 15079      | 1    |
| 12       | SEAL PLATE          | 38272-713   | 10010      | 1   | 48         | OIL LEVEL DECAL    | 38816-123   | ---        | 1    |
| 13       | PEDESTAL            | 38257-520   | 10000      | 1   | 49         | BOTTLE OILER       | 26713-004   | ---        | 1    |
| 14       | HEX HD CAPSCREW     | B0605       | 15991      | 6   | 50         | OILER BRCKT ASSY   | 41881-720   | 24150      | 1    |
| 15       | BEARING CAP         | 38322-425   | 10010      | 1   | 51         | FLAT WASHER        | K10         | 15991      | 2    |
| 16       | BRG CAP GSKT        | 4184G       | 18000      | 1   | 52         | LOCK WASHER        | J10         | 15991      | 2    |
| 17 *     | ROLLER BEARING      | 23528-005   | ---        | 1   | 53         | MALE CONNECTOR     | 26523-409   | ---        | 2    |
| 18       | VENTED PLUG         | 38649-009   | 15079      | 1   | 54         | 3/8" HOSE          | 18513-054   | ---        | .92' |
| 19 *     | IMPELLER SHAFT      | 38512-522   | 17040      | 1   | 55         | HOSE CLAMP         | 26518-642   | ---        | 2    |
| 20 *     | BALL BEARING        | 23413-015   | ---        | 2   | 56 *       | BRG SHIM SET       | 48261-055   | ---        | 1    |
| 21 *     | BEARING CAP O-RING  | 25152-249   | ---        | 1   | 57         | LOCKING TAB WASHER | 23962-515   | ---        | 1    |
| 22       | BEARING LOCK NUT    | 23962-015   | ---        | 1   | 58 *       | RETAINING RING     | 24124-057   | ---        | 1    |
| 23       | BEARING CAP         | 38322-429   | 10000      | 1   | 59         | RD HD MACH SCREW   | X0405       | 15991      | 2    |
| 24       | HEX HD CAPSCREW     | B0605       | 15991      | 6   | 60         | LOCK WASHER        | J04         | 15991      | 2    |
| 25 *     | SHAFT KEY           | N1016       | 15990      | 1   | NOT SHOWN: |                    |             |            |      |
| 26 *     | OIL SEAL            | 25258-845   | ---        | 1   |            | G-R DECAL          | GR-03       | ---        | 1    |
| 27       | BRG CVTY DRAIN PLUG | P04         | 15079      | 1   |            | STRAINER           | 46641-012   | 24150      | 1    |
| 28       | SIGHT GAUGE         | S1471       | ---        | 2   |            | INSTRUCTION TAG    | 38817-024   | ---        | 1    |
| 29 *     | OIL SEAL            | 25258-845   | ---        | 1   |            | SUCTION DECAL      | 6588AG      | ---        | 1    |
| 30       | STUD                | C1013       | 15991      | 4   |            | DISCHARGE DECAL    | 6588BJ      | ---        | 1    |
| 31       | HEX NUT             | D10         | 15991      | 4   |            | LUBRICATION DECAL  | 38816-079   | ---        | 2    |
| 32 *     | OIL SEAL            | 25258-845   | ---        | 1   |            | ROTATION DECAL     | 2613M       | ---        | 1    |
| 33       | CASING DRAIN PLUG   | P24         | 10009      | 1   |            | INSTRUCTION TAG    | 38817-011   | ---        | 1    |
| 34 *     | WEAR RING           | 4181A       | 14000      | 1   |            | NAME PLATE         | 38818-127   | 13000      | 1    |
| 35 *     | SPIRAL PIN          | 21137-123   | ---        | 3   |            | DRIVE SCREW        | BM#04-03    | 17000      | 4    |
| 36       | IMPELLER WASHER     | 31167-022   | 15030      | 1   |            |                    |             |            |      |

\* INDICATES PARTS RECOMMENDED FOR STOCK

**THE GORMAN-RUPP COMPANY D MANSFIELD, OHIO**

GORMAN-RUPP OF CANADA LIMITED D ST. THOMAS, ONTARIO, CANADA

Printed in U.S.A.



**THE GORMAN-RUPP COMPANY D MANSFIELD, OHIO**

GORMAN-RUPP OF CANADA LIMITED D ST. THOMAS, ONTARIO, CANADA

Printed in U.S.A.

S/N 1255204 Up  
PUMP ISSUE 1

**PARTS LIST**  
**Priming Chamber Assembly**

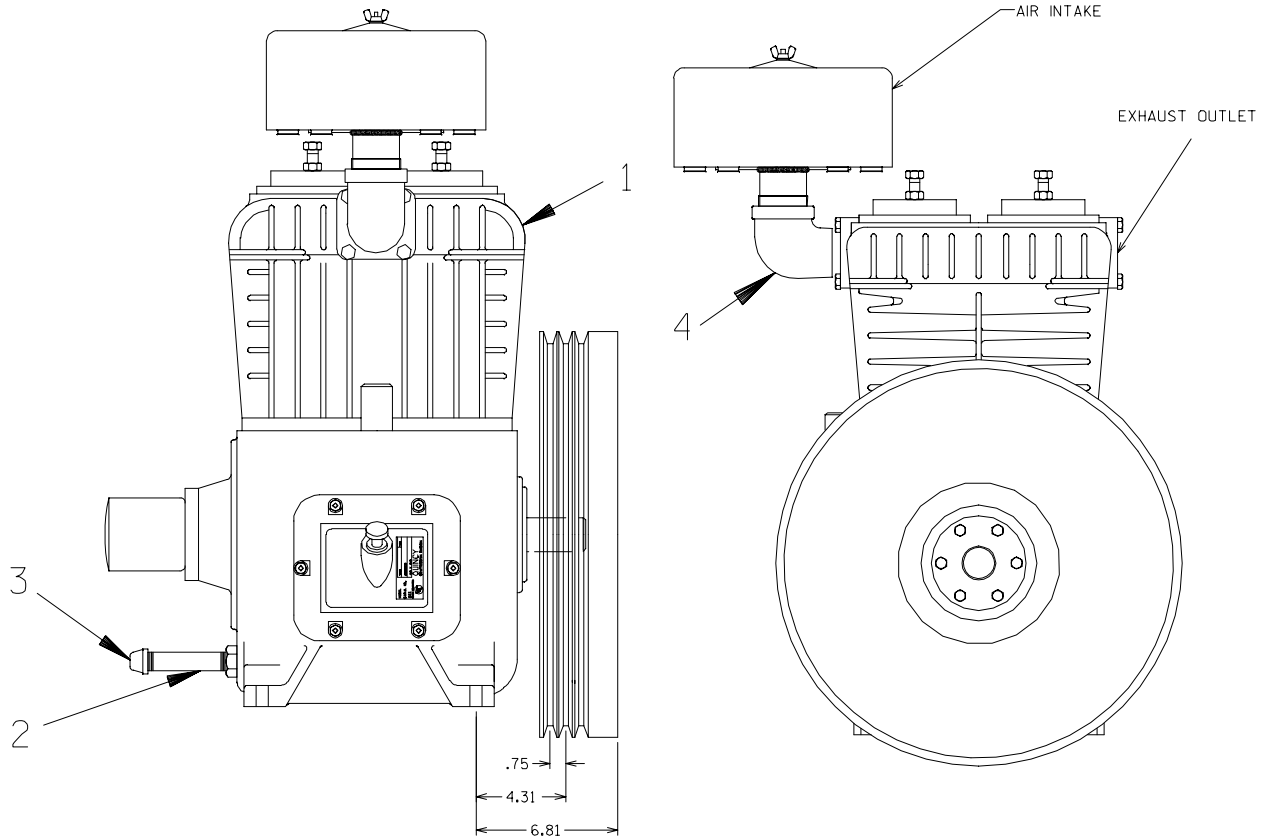
| ITEM NO. | PART NAME           | PART NUMBER | MAT'L CODE | QTY  | ITEM NO. | PART NAME           | PART NUMBER | MAT'L CODE | QTY |
|----------|---------------------|-------------|------------|------|----------|---------------------|-------------|------------|-----|
| 1        | PRIMING CHAMBER LID | 38346-615   | 1300U      | 1    | 18       | VALVE STRAP         | 33276-041   | 19410      | 1   |
| 2        | PEELER VALVE NECK   | 38349-413   | 10000      | 1    | 19       | CHECK VALVE ASSY    | 46411-112   | ---        | 1   |
| 3        | HEX HD CAPSCREW     | B0403-1/2   | 15991      | 4    | 20 *     | -CHECK VALVE        | 38671-413   | 19020      | 1   |
| 4        | LOCKWASHER          | J04         | 15991      | 4    | 21       | -LOCKWASHER         | J#10        | 17000      | 1   |
| 5 *      | VALVE PLATE GSKT    | 38687-555   | 19060      | 1    | 22       | -HEX NUT            | D#10        | 17000      | 1   |
| 6        | VALVE PLATE         | 33541-040   | 17000      | 1    | 23       | -FLAT WASHER        | 21161-810   | ---        | 1   |
| 7        | HEX HD CAPSCREW     | B0402-1/2   | 15991      | 4    | 24       | -HEX HD CAPSCREW    | B#10-02     | 17000      | 1   |
| 8        | LOCKWASHER          | J04         | 15991      | 4    | 25       | -FLAT WASHER        | 21161-811   | ---        | 1   |
| 9 *      | LINEAR O-RING       | 18512-056   | ---        | 3.9' | 26       | -SEALING WASHER     | 25123-056   | ---        | 1   |
| 10       | HEX HD CAPSCREW     | B0605       | 15991      | 12   | 27       | STUD                | C0607       | 17000      | 2   |
| 11       | LOCKWASHER          | J06         | 15991      | 12   | 28       | HEX LOCKNUT         | DD06        | 17000      | 2   |
| 12       | GUIDE PLATE         | 33522-009   | 17000      | 2    | 29       | HEX HD CAPSCREW     | B0604       | 17000      | 4   |
| 13       | FLAT HD CAPSCREW    | F#10-03     | 17000      | 6    | 30       | LOCKWASHER          | J06         | 17000      | 4   |
| 14       | LOCKWASHER          | J#10        | 17000      | 6    | 31       | FLAT WASHER         | KB06        | 17000      | 8   |
| 15       | HEX NUT             | D#10        | 17000      | 6    | 32       | PRIM VALVE FLOAT    | 38349-412   | 19220      | 1   |
| 16       | VLV STRAP BRKT ASSY | 41881-597   | 2415X      | 1    | 33       | PRIMING CHAMBER     | 38343-018   | 10000      | 1   |
| 17       | CLAMP PLATE         | 38349-411   | 14000      | 1    | 34       | VLV STRAP PROTECTOR | 33271-019   | 19000      | 2   |

\* INDICATES PARTS RECOMMENDED FOR STOCK

**THE GORMAN-RUPP COMPANY D MANSFIELD, OHIO**

GORMAN-RUPP OF CANADA LIMITED D ST. THOMAS, ONTARIO, CANADA

Printed in U.S.A.



**PARTS LIST**  
**Air Compressor**

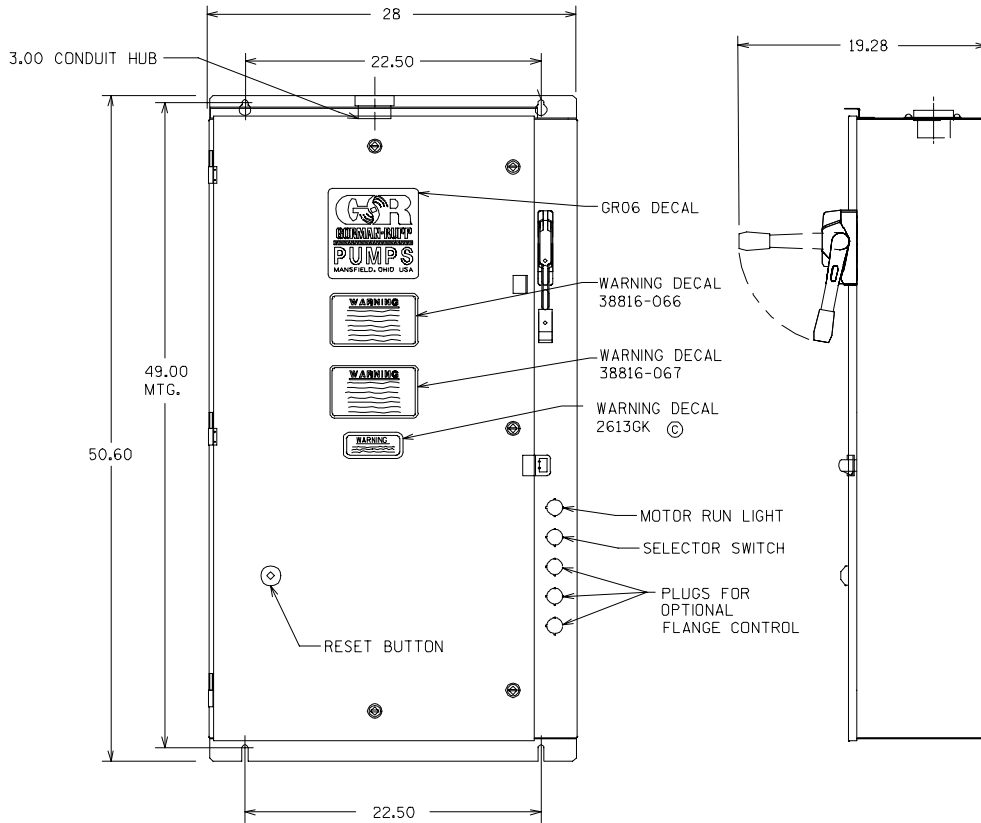
| ITEM NO. | PART NAME      | PART NUMBER | MAT'L CODE | QTY |
|----------|----------------|-------------|------------|-----|
| 1        | AIR COMPRESSOR | 26813-101   | ---        | 1   |
| 2        | PIPE NIPPLE    | T0818       | 15079      | 1   |
| 3        | PIPE CAP       | V08         | 15079      | 1   |
| 4        | ST ELBOW       | RS32        | 11999      | 1   |

\* INDICATES PARTS RECOMMENDED FOR STOCK

**THE GORMAN-RUPP COMPANY D MANSFIELD, OHIO**

GORMAN-RUPP OF CANADA LIMITED D ST. THOMAS, ONTARIO, CANADA Printed in U.S.A.

S/N 1255204 Up  
PUMP ISSUE 1



| REPAIR COMPONENTS |                               |      |                        |
|-------------------|-------------------------------|------|------------------------|
| ITEM              | DESCRIPTION                   | QTY. | CUTLER HAMMER PART NO. |
| 1                 | CIRCUIT BREAKER               | 1    | SEE TABULATION         |
| 2                 | MOTOR STARTER                 | 1    | AN16SNOAB              |
| 3                 | CONTACTOR - 3 POLE            | 1    | CN15SN3A               |
| 4                 | RENEWAL CONTACT SET           | 1    | 6-45-2                 |
| 5                 | COIL                          | 1    | (ON COIL)              |
| 6                 | OVERLOAD RELAY                | 1    | C306DN3B               |
| 7                 | OVERLOAD RELAY ADAPTER        | 1    | 10-6380-2              |
| 8                 | HEATER PACK                   | 1    | SEE TABULATION         |
| 9                 | CONTROL TRANSFORMER           | 1    | C0250G6UFB             |
| 10                | CONTROL RELAY                 | 2    | D15CR22AB              |
| 11                | *MOTOR RUN* PILOT LIGHT       | 1    | 10250T34G              |
| 12                | *MOTOR RUN* LEGEND PLATE      | 1    | 10250TM81              |
| 13                | TERMINAL BLOCK                | 3    | 80-5817                |
| 14                | H-O-A SELECTOR SWITCH         | 1    | 10250T21KB             |
| 15                | *HAND-OFF-AUTO* LEGEND PLATE  | 1    | 10250TM51              |
| 16                | CURRENT TRANSFORMER           | 3    | 42-3564-2              |
| 17                | *ALARM SILENCE* PUSH BUTTON   | 1    | 1025T23Y               |
| 18                | RESET BOOT                    | 1    | 32-524                 |
| 19                | PRIMARY FUSE @ 200V           | 2    | 44-2144-31             |
| 20                | PRIMARY FUSE @ 230V           | 2    | 44-2144-29             |
| 21                | PRIMARY FUSE @ 380V           | 2    | 44-2144-26             |
| 22                | PRIMARY FUSE @ 460V           | 2    | 44-2144-23             |
| 23                | PRIMARY FUSE @ 575V           | 2    | 44-2144-21             |
| 24                | SECONDARY FUSE                | 1    | 44-796-10              |
| 25                | LEGEND PLATE "ALARM SILENCER" | 1    | 10250TM36              |
| 26                | PUB SHEET                     | 1    | 25776                  |

| NEMA SIZE | CONTROL P/N  |              | MOTOR DATA |              |       | CIRCUIT BREAKER |            | REFERENCE DATA    |                    |              |
|-----------|--------------|--------------|------------|--------------|-------|-----------------|------------|-------------------|--------------------|--------------|
|           | G-R PART NO. | C.H.CAT. NO. | H.P.       | VOLTS 60 HZ. | FLA   | C.H. PART NO.   | AMP RATING | HEAT PACK G-R P/N | C.H. NO. HEAT PACK | RANGE        |
| 5         | 27515-307    | A999AY567    | 121.0      | 460          | 150.0 | HMCP250W5C      | 250        | 27521-215         | H2006B-3           | *107.0/174.0 |
|           |              |              | 127.0      |              | 177.0 |                 |            |                   |                    | *129.0/209.0 |
|           | 27515-308    | —            | 154.0      |              | 194.0 | HMCP400X5C      | 400        | 27521-216         | H2008B-3           | *194.0/274.0 |
|           |              |              | 174.0      |              | 232.0 |                 |            |                   |                    |              |

**THE GORMAN-RUPP COMPANY D MANSFIELD, OHIO**

GORMAN-RUPP OF CANADA LIMITED D ST. THOMAS, ONTARIO, CANADA

Printed in U.S.A.



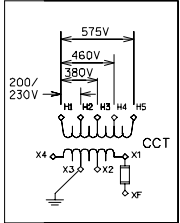
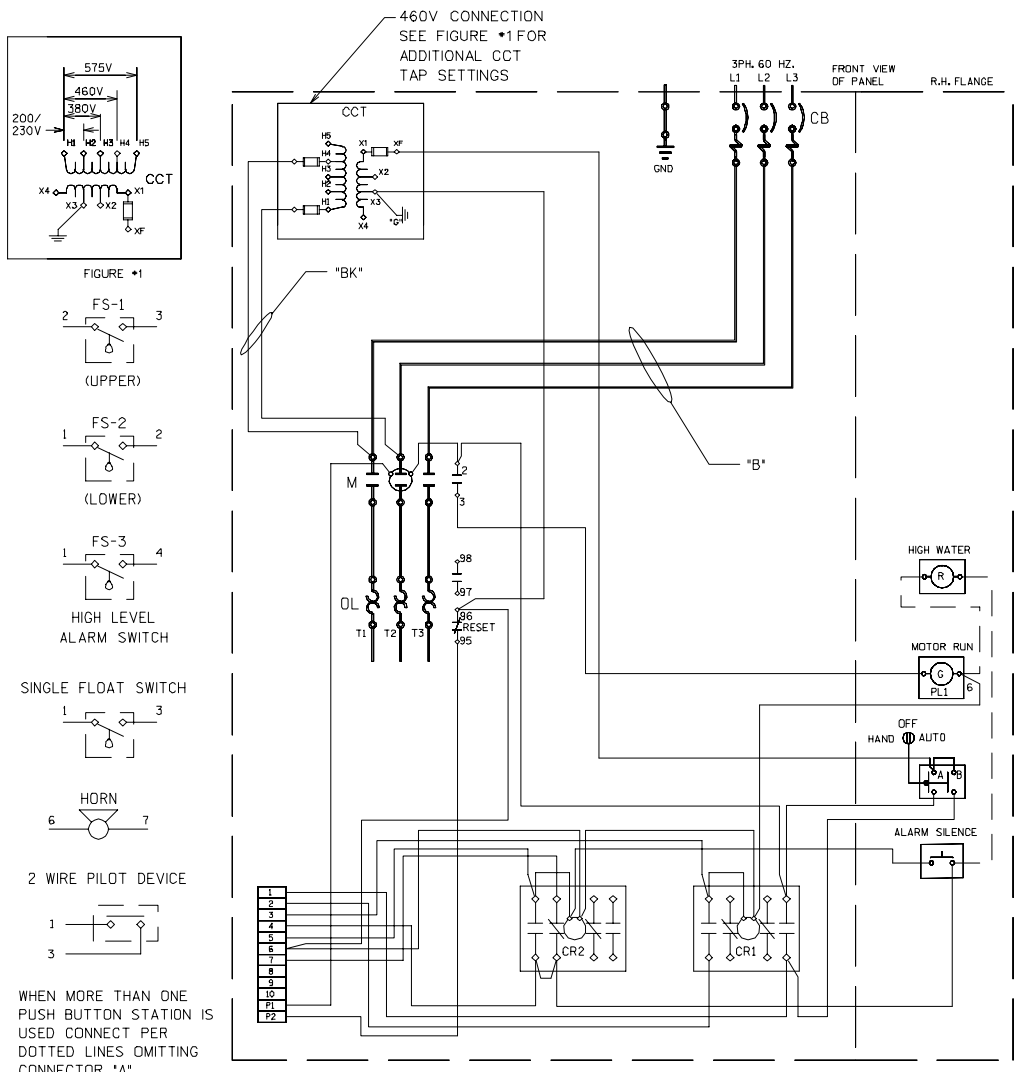
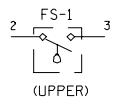
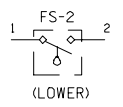


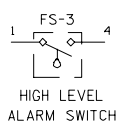
FIGURE #1



(UPPER)

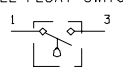


(LOWER)



HIGH LEVEL ALARM SWITCH

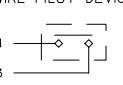
SINGLE FLOAT SWITCH



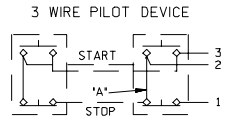
HORN



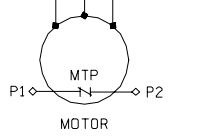
2 WIRE PILOT DEVICE



WHEN MORE THAN ONE PUSH BUTTON STATION IS USED CONNECT PER DOTTED LINES OMITTING CONNECTOR 'A'.



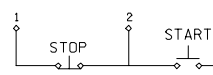
3 WIRE PILOT DEVICE



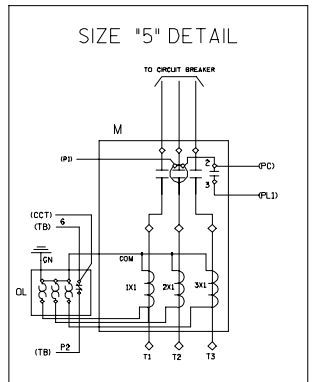
MOTOR

| CONTACT | POSITION | HAND | OFF | AUTO |
|---------|----------|------|-----|------|
| A       |          | X    |     |      |
| B       |          |      |     | X    |

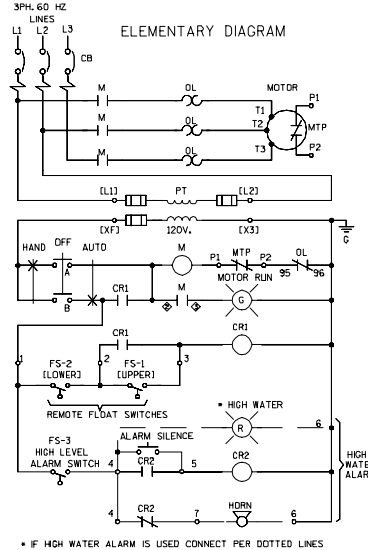
X = CONTACT CLOSED



REMOTE PUSH BUTTON IN PLACE OF FLOAT SWITCH



SIZE #5 DETAIL



ELEMENTARY DIAGRAM

\* IF HIGH WATER ALARM IS USED CONNECT PER DOTTED LINES

**THE GORMAN-RUPP COMPANY D MANSFIELD, OHIO**

GORMAN-RUPP OF CANADA LIMITED D ST. THOMAS, ONTARIO, CANADA Printed in U.S.A.

**For U.S. and International Warranty Information,  
Please Visit [www.grpumps.com/warranty](http://www.grpumps.com/warranty)  
or call:  
U.S.: 419-755-1280  
International: +1-419-755-1352**

**For Canadian Warranty Information,  
Please Visit [www.grcanada.com/warranty](http://www.grcanada.com/warranty)  
or call:  
519-631-2870**