



PRIME-AIRE[®] **SERIES**
PUMP MODEL
PA6C60-F4L

MANUAL
PART 2 of 3

PARTS
LIST
WITH
PERFORMANCE CURVE

THE GORMAN-RUPP COMPANY • MANSFIELD, OHIO

GORMAN-RUPP OF CANADA LIMITED • ST. THOMAS, ONTARIO, CANADA Printed in U.S.A.

www.gormanrupp.com

©Copyright by the Gorman-Rupp Company



The engine exhaust from this product contains chemicals known to the State of California to cause cancer, birth defects or other reproductive harm.

PERFORMANCE CURVE – SECTION A

RECORDING MODEL AND SERIAL NUMBERS

Please record the pump model and serial number in the spaces provided below and in the separate Installation/Operation Manual accompanying your pump. Your Gorman-Rupp distributor needs this information when you require parts or service.

Pump Model: _____

Serial Number: _____

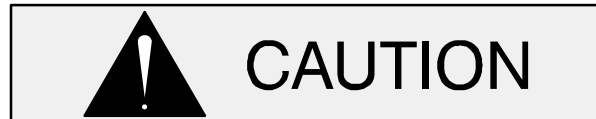
WARRANTY INFORMATION

The pump warranty is provided as part of Gorman-Rupp's support program for customers who operate and maintain their equipment as described in this manual and other accompanying literature. Please note that should the equipment be abused or modified to change its performance beyond the original factory specifications, the warranty will become void and any claim will be denied.

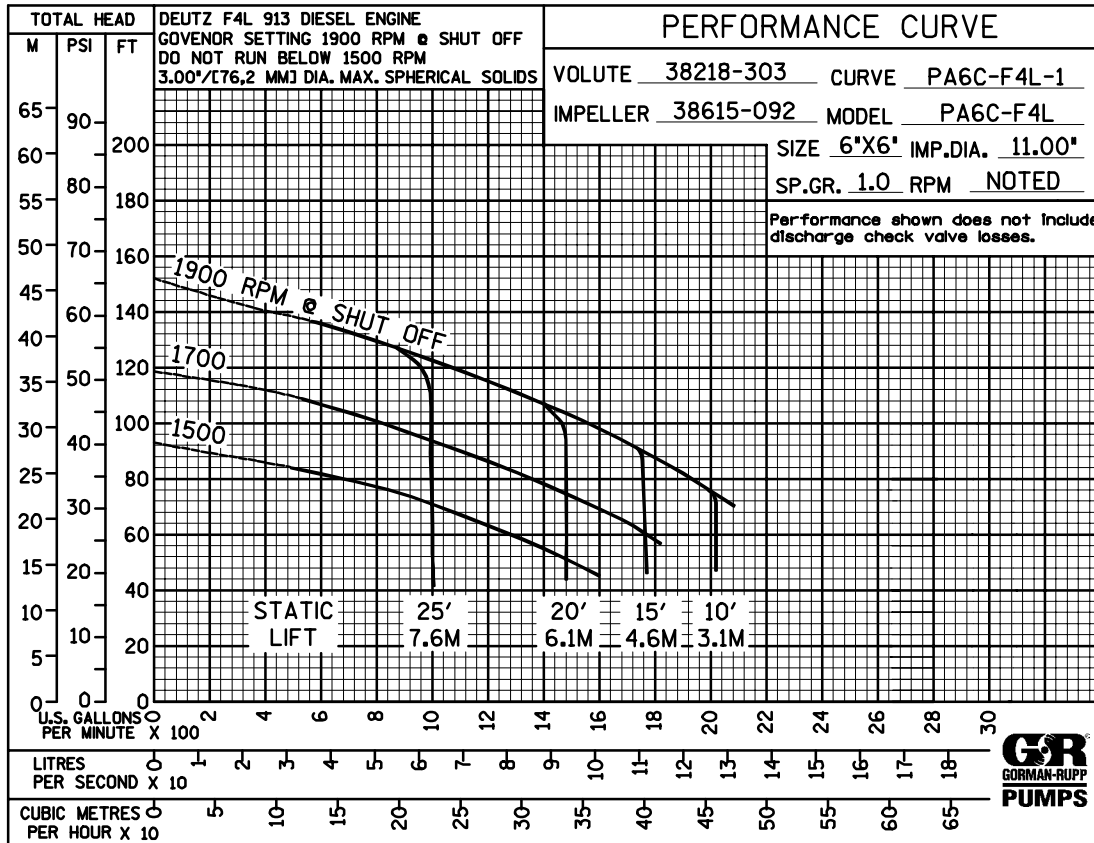
PERFORMANCE CURVE

The performance curve on the following page is based on 70°F (21°C) clear water at sea level, with minimum suction lift. Since pump installations are seldom identical, your performance may be different due to such factors as viscosity, specific gravity, elevation, temperature, and impeller trim.

If your pump serial number is followed by an "N", your pump is **NOT** a standard production model. Contact the Gorman-Rupp Company to verify performance or part numbers.

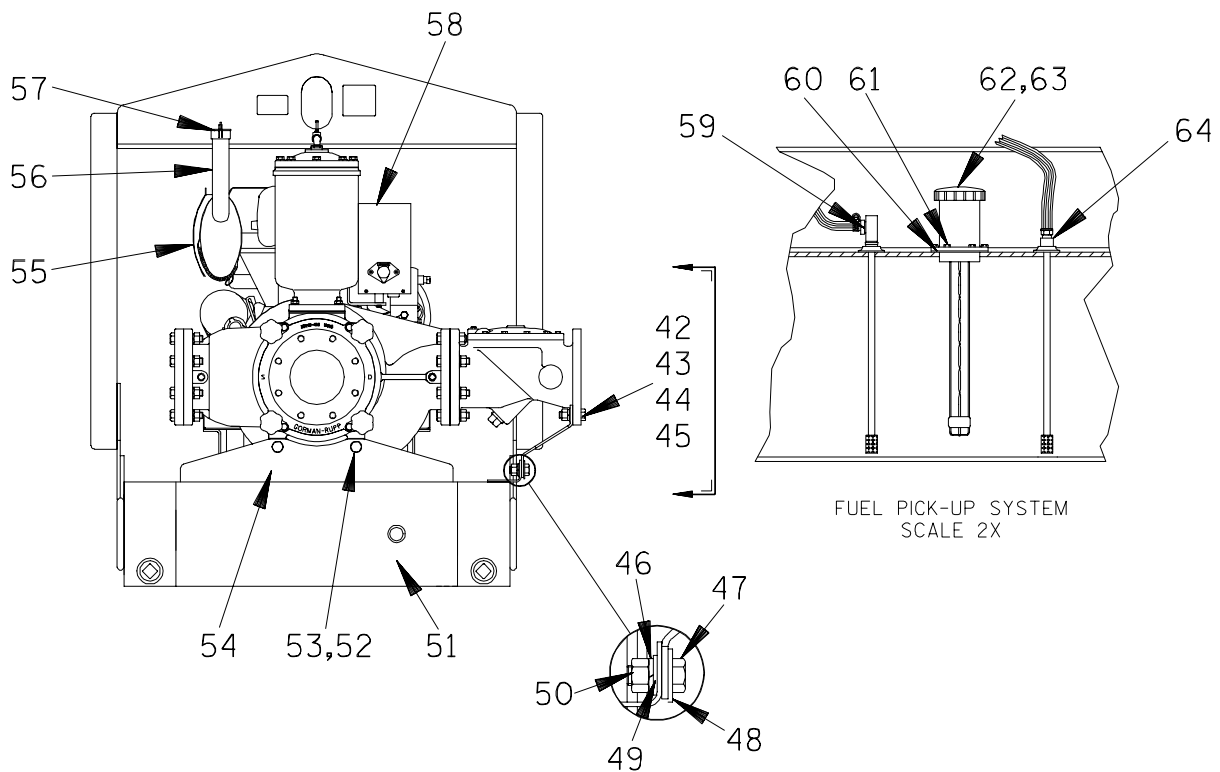
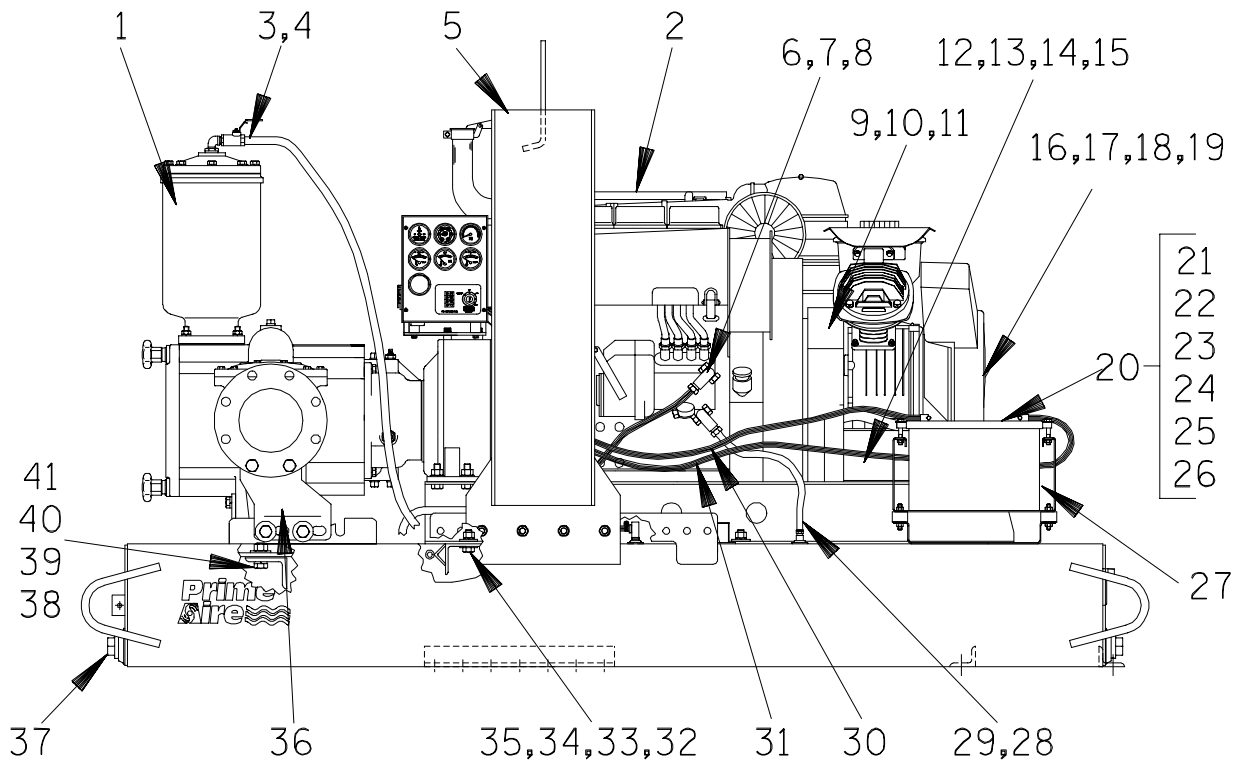


Pump speed and operating condition points must be within the continuous performance range shown on the curve.



Performance Curve – Model PA6C60–F4L

This Page Intentionally Blank



THE GORMAN-RUPP COMPANY • MANSFIELD, OHIO

GORMAN-RUPP OF CANADA LIMITED • ST. THOMAS, ONTARIO, CANADA

Printed in U.S.A.

S/N 1304261 Up
PUMP ISSUE 2

PARTS LIST
PA6C60—F4L Pump Model

If your pump serial number is followed by an "N", your pump is **NOT** a standard production model. Contact the Gorman-Rupp Company to verify part numbers.

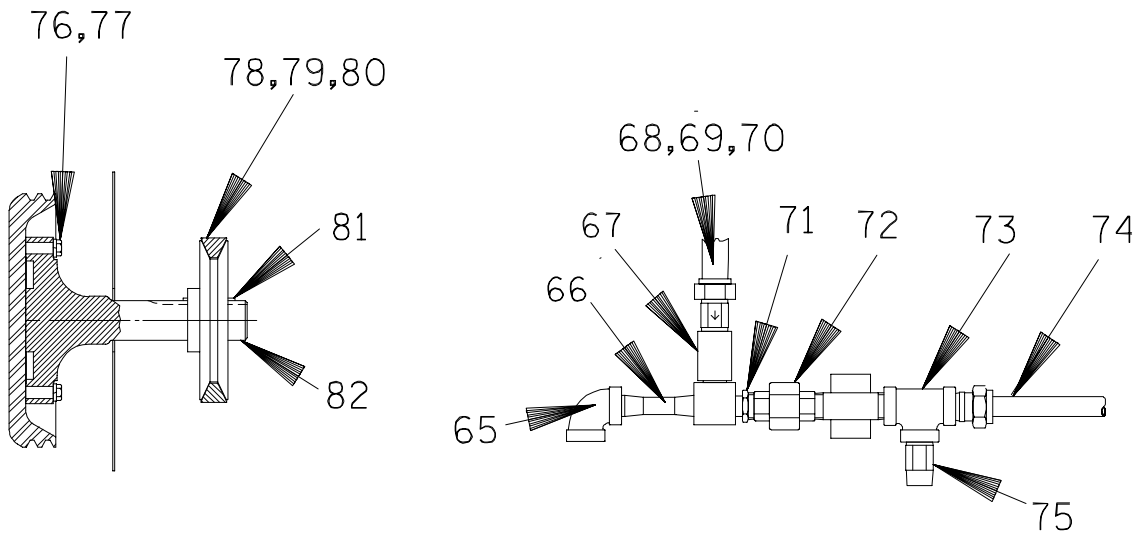
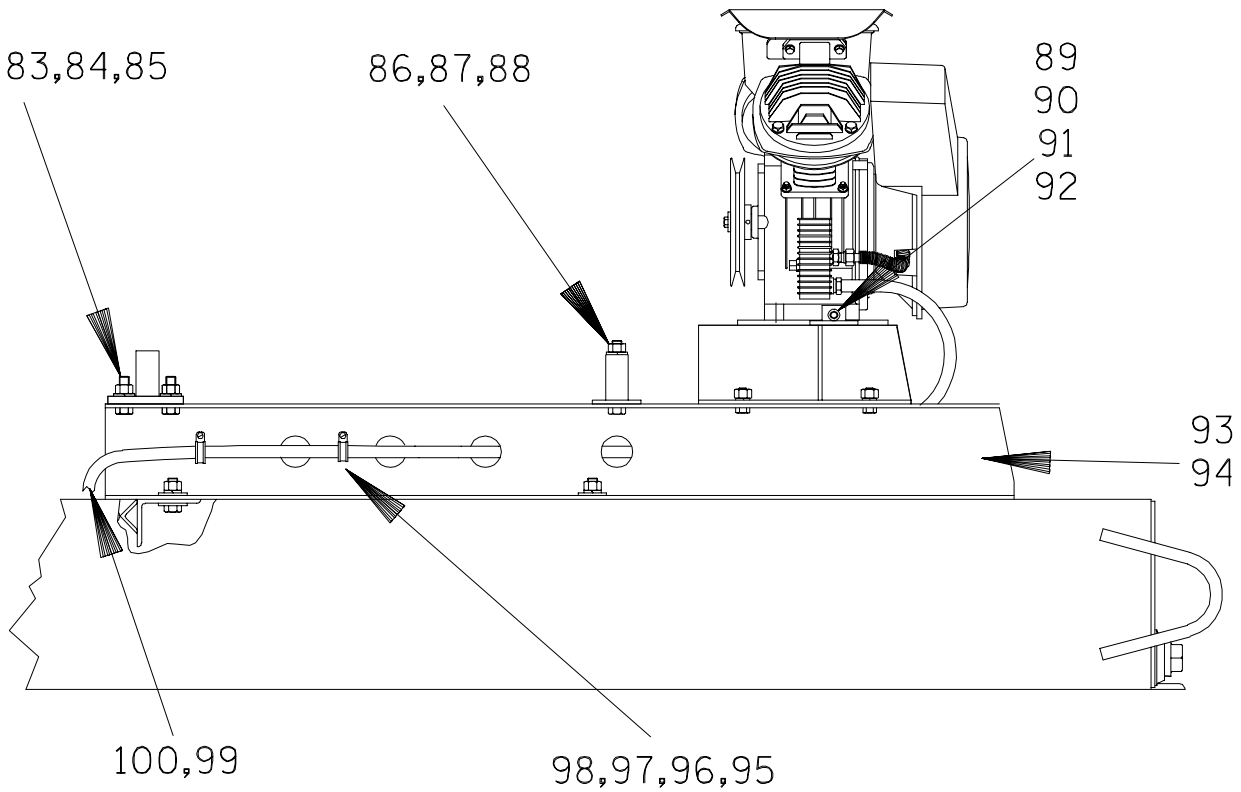
ITEM NO.	PART NAME	PART NUMBER	MAT'L CODE	QTY	ITEM NO.	PART NAME	PART NUMBER	MAT'L CODE	QTY
1	PUMP END ASSEMBLY	PA6C60—(SAE4/10)		1	33	HEX NUT	D10	15991	6
2	DEUTZ F4L ENGINE	29217—243	----	1	34	LOCKWASHER	J10	15991	6
3	CONNECTOR	S1598	----	1	35	FLAT WASHER	K10	15991	12
4	HOSE BARB FTG	26523—047	----	1	36	CHECK VALVE BRKT	34535—018	15080	1
5	LIFTING BAIL KIT	48274—801	----	1	37	PIPE PLUG	P32	10009	4
6	2 FOOT HOSE	18513—302	----	1	38	HEX HD CAPSCREW	B1009	15991	4
7	HOSE CLAMP	26518—642	----	2	39	FLAT WASHER	KB10	17000	8
8	HOSE BARB FITTING	26523—333	----	2	40	LOCKWASHER	J10	15991	4
9	BELT GUARD ASSY	42353—020	----	1	41	HEX NUT	D10	15991	4
10	HEX HD CAPSCREW	B0604	15991	2	42	HEX HD CAPSCREW	B1210	17000	2
11	HEX NUT	J06	15991	2	43	LOCKWASHER	J12	15991	2
12	A/C MTG BRKT ASSY	41881—557	24150	1	44	HEX NUT	D12	15991	2
13	HEX HD CAP SCREW	B0805	15991	4	45	FLAT WASHER	K12	15991	2
14	HEX NUT	D08	15991	4	46	FLAT WASHER	K12	15991	2
15	LOCKWASHER	J08	15991	4	47	HEX HD CAPSCREW	B1207	15991	2
16	AIR COMPRESSOR ASSY	46181—902	----	1	48	LOCKWASHER	J12	15991	2
17	HEX HD CAPSCREW	B0604	15991	4	49	HEX NUT	D12	15991	2
18	LOCKWASHER	J06	15991	4	50	FLAT WASHER	K12	15991	2
19	FLAT WASHER	K06	15991	4	51	BASE/FUEL TANK	41553—006	24150	1
20	BATTERY BOX ASSY	42432—005	----	1	52	HEX HD CAPSCREW	B1206	15991	2
21	—HEX HD CAPSCREW	B0610	15991	2	53	LOCKWASHER	J12	15991	2
22	—HEX NUT W/FLANGE	21765—314	----	10	54	PUMP SUPPORT BRKT	34266—047	15080	1
23	—FLAT WASHER	KE06	15991	2	55	MUFFLER GUARD ASSY	42331—031	----	1
24	—BATTERY TAG	38818—517	----	1	56	EXHAUST ELBOW	31912—023	15990	1
25	—BATTERY FRAME ASSY	41434—008	24000	1	57	RAIN CAP	S1331	----	1
26	—BATTERY BOX	34751—009	15120	1	58	INST PANEL INSTL	48122—526	----	1
27	BATTERY	SEE OPTIONS		REF	59	FUEL PICKUP	29332—145	----	1
28	HOSE CONNECTOR	S1447	----	1	60*	GASKET	38683—270	19060	1
29	HOSE ASSEMBLY	46341—812	----	1	61	HEX HD MACH SCREW	B#10—02S	15991	6
30	POS CABLE ASSEMBLY	47311—143	----	1	62	FUEL GAUGE	29332—135	----	1
31	NEG CABLE ASSEMBLY	47311—184	----	1	63	FILL NECK ASSY	46312—017	24152	1
32	HEX HD CAPSCREW	B1007	15991	6	64	FUEL PICKUP	29332—145	----	1

* INDICATES PARTS RECOMMENDED FOR STOCK

THE GORMAN-RUPP COMPANY • MANSFIELD, OHIO

GORMAN-RUPP OF CANADA LIMITED • ST. THOMAS, ONTARIO, CANADA

Printed in U.S.A.



THE GORMAN-RUPP COMPANY • MANSFIELD, OHIO

GORMAN-RUPP OF CANADA LIMITED • ST. THOMAS, ONTARIO, CANADA

Printed in U.S.A.

December 02, 2004

© Copyright by the Gorman-Rupp Company

3 of 13

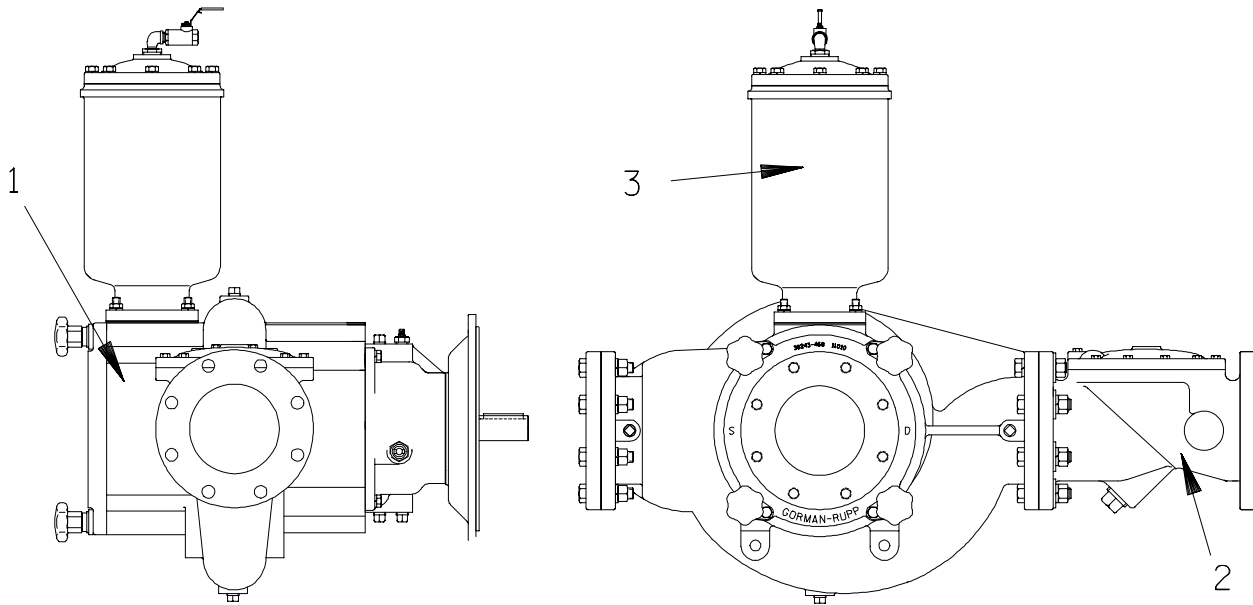
Page 64.6 C3.2

S/N 1304261 Up
PUMP ISSUE 2

PARTS LIST
PA6C60—F4L Pump Model

ITEM NO.	PART NAME	PART NUMBER	MAT'L CODE	QTY	ITEM NO.	PART NAME	PART NUMBER	MAT'L CODE	QTY
65	PIPE ELBOW	AG08	11999	1					
66	VENTURI	26817-002	----	1					
67	PIPE CPLG	AE08	15079	1					
68	HOSE BARB FITTING	26523-446	----	1					
69	BALL/CHECK VALVE	26641-091	----	1					
70	4.25 FOOT HOSE	18513-113	----	1					
71	RED PIPE BUSH	AP0806	15079	1					
72	PIPE UNION	AH08	11999	1					
73	TEE 1/2"	U08	11999	1					
74	HOSE ASSY	46341-426	----	1					
75	RELIEF VALVE	26662-028	----	1					
76	CAP SCREW	22645-136	----	4					
77	LOCKWASHER	21171-510	----	4					
78	SHEAVE	24214-002	----	1					
79	BUSHING	24131-553	----	1					
80 *	V-BELT	24166-011	----	1					
81 *	KEY	N0405	15990	1					
82	CRANKSHAFT EXT	38531-009	11010	1					
83	HEX HD CAPSCREW	B1008	15991	4					
84	HEX NUT	D10	15991	4					
85	LOCK WASHER	J10	15991	4					
86	HEX HD CAPSCREW	B1017	15991	2					
87	HEX NUT	D10	15991	2					
88	LOCKWASHER	J10	15991	2					
89	MOTOR TENSIONER	41327-031	24150	1					
90	HEX NUT	D08	15991	1					
91	LOCKWASHER	J08	15991	1					
92	FLAT WASHER	K08	15991	1					
93	ENG SUPP BRKT/LH	34451-090	15080	1					
94	ENG SUPP BRKT/RH	34451-089	15080	1					
95	HEX HD CAPSCREW	B#10-03	15991	2					
96	HEX NUT	D#10	15991	2					
97	LOCKWASHER	J#10	15991	2					
98	CABLE CLAMP	27111-346	----	2					
99	8.5 FOOT HOSE	18513-304	----	1					
100	HOSE BARB FITTING	26525-021	----	2					
					NOT SHOWN:				
					PRIME AIRE DECAL 38816-078 ---- 1				
					G-R DECAL GR-06 ---- 4				
					INSTR TAG 38817-085 ---- 1				
					ENG START-UP TAG 38816-269 ---- 1				
					INSTRUCTION DECAL 38818-144 ---- 1				
					FLOAT SWITCH KIT 48312-980 ---- 1				
					WARNING DECAL 38816-203 ---- 2				
					CAUTION DECAL 2613FJ ---- 1				
					OPTIONS:				
					REPAIR CONTROL PANEL 48122-531 ---- 1				
					12V BATTERY (DRY) 29331-517 ---- 1				
					12V BATTERY (WET) 29331-527 ---- 1				
					WHEEL KIT GRP30-255 ---- 1				
					DBL FLOAT SWITCH KIT 48312-981 ---- 1				
					EPS/TRANSDUCER CTRL PANEL KIT 48122-534 ---- 1				
					GAUGE KIT 48213-112 ---- 1				
					2-5/16" BALL TANDEM HIGHWAY TRAILER W/SURGE BRAKES				
					-JACK W/FOOT PAD 29313-011 ---- 1				
					-JACK W/DOLLY WHEEL 29313-012 ---- 1				
					3" I.D. LUNETTE EYE TANDEM HIGHWAY TRAILER W/SURGE BRAKES				
					-JACK W/FOOT PAD 29313-013 ---- 1				
					-JACK W/DOLLY WHEEL 29313-014 ---- 1				
					2-5/16" BALL TANDEM HIGHWAY TRAILER W/ELECTRIC BRAKES				
					-JACK W/FOOT PAD 29313-015 ---- 1				
					-JACK W/DOLLY WHEEL 29313-016 ---- 1				
					3" I.D. LUNETTE EYE TANDEM HIGHWAY TRAILER W/ELECTRIC BRAKES				
					-JACK W/FOOT PAD 29313-017 ---- 1				
					-JACK W/DOLLY WHEEL 29313-018 ---- 1				

* INDICATES PARTS RECOMMENDED FOR STOCK



PARTS LIST
PA6C60—(SAE 4/10) Pump End Assembly

ITEM NO.	PART NAME	PART NUMBER	MAT'L CODE	QTY
1	PUMP END ASSY	66F60—(SAE4/10)	---	1
2	CHECK VALVE KIT	48274—015	---	1
	—CHECK VALVE	26642—126	---	1
*	—FLAPPER	26688—001	---	1
*	—COVER O-RING	25152—377	---	1
*	—FLANGE GASKET	25113—036	---	1
3	PRIMING CHAMBER KIT	48275—005	---	1
NOT SHOWN	STRAINER	7823A	24000	1
	SUCTION STICKER	6588AG	---	1
	DISCHARGE STICKER	6588BJ	---	1
	WARNING DECAL	2613FE	---	1
	G—R DECAL	GR—06	---	1
	LUBE DECAL	11421A	---	1
	OIL LEVEL DECAL	38816—123	---	1
	ROTATION DECAL	2613M	---	1

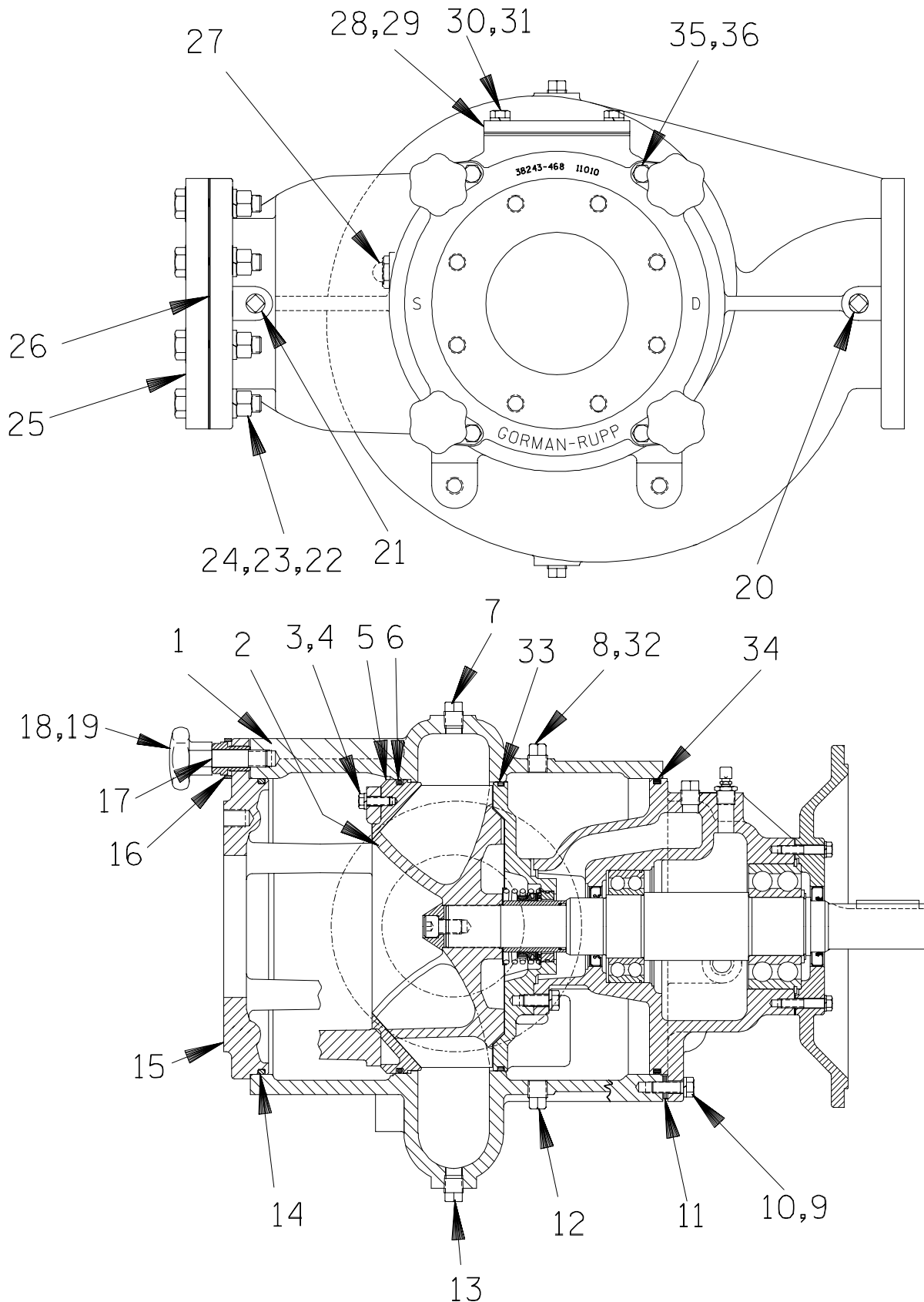
* INDICATES PARTS RECOMMENDED FOR STOCK

THE GORMAN-RUPP COMPANY • MANSFIELD, OHIO

GORMAN-RUPP OF CANADA LIMITED • ST. THOMAS, ONTARIO, CANADA

Printed in U.S.A.

S/N 1304261 Up
PUMP ISSUE 2



THE GORMAN-RUPP COMPANY • MANSFIELD, OHIO

GORMAN-RUPP OF CANADA LIMITED • ST. THOMAS, ONTARIO, CANADA

Printed in U.S.A.

PARTS LIST
66F60—(SAE4/10) Pump End Assembly

ITEM NO.	PART NAME	PART NUMBER	MAT'L CODE	QTY
1	VOLUTE	38218—303	11010	1
2	REPAIR ROTATING ASSY	44163—430	---	1
3	HEX HD CAP SCREW	B0604—1/2	17000	4
4	LOCK WASHER	J06	17090	4
5	WEAR PLATE	38691—864	11010	1
6	* O-RING	25152—453	---	1
7	PIPE PLUG	P08	15079	1
8	VENTED PLUG	4823A	15079	1
9	HEX HD CAP SCREW	B0806	15991	4
10	LOCK WASHER	J08	15991	4
11	ADJUSTING SHIM	13131—3	17040	12
12	PIPE PLUG	P08	15079	1
13	PIPE PLUG	P08	15079	1
14	* O-RING	S1676	---	1
15	BACK COVER PLATE	38243—468	11010	1
16	LOCKING COLLAR	38115—551	15001	4
17	ADJUSTING SCREWS	31871—070	1500X	4
18	STUD	C1213	15991	4
19	HAND KNOB	38115—901	10000	4
20	PIPE PLUG	P08	15079	1
21	PIPE PLUG	P08	15079	1
22	HEX HD CAP SCREW	B1213	15991	8
23	LOCK WASHER	J12	15991	8
24	HEX NUT	D12	15991	8
25	BLIND FLANGE ASSY	42111—349	---	1
26	* GASKET	25113—036	---	1
27	SIGHT GAUGE	S1471	---	1
28	COVERPLATE	33541—045	15080	1
29	* GASKET	38687—053	19060	1
30	HEX HEAD CAP SCREW	B0805	15991	4
31	LOCK WASHER	J08	15991	4
32	SHIP PLUG	11495B	15079	1
33	* O-RING	25152—381	---	1
34	* O-RING	S1676	---	1
35	HEX HD CAP SCREW	B0804—1/2	15991	4
36	LOCK WASHER	J08	15991	4

NOT SHOWN:

DRIVE ASSY	44162—159	---	1
PIPE PLUG	P12	15079	1
OIL LEVEL DECAL	38816—123	---	1
NAME PLATE	38818—127	13000	1
DRIVE SCREW	BM#04—03	17000	4

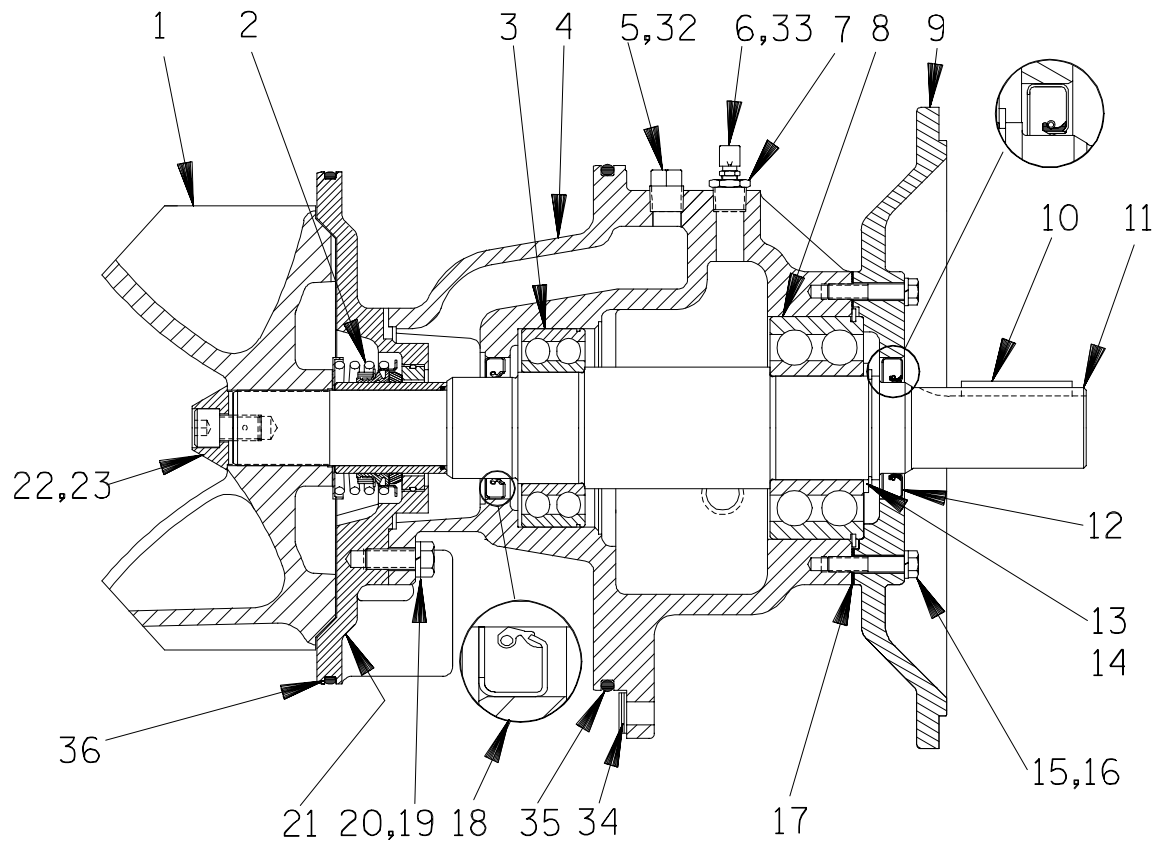
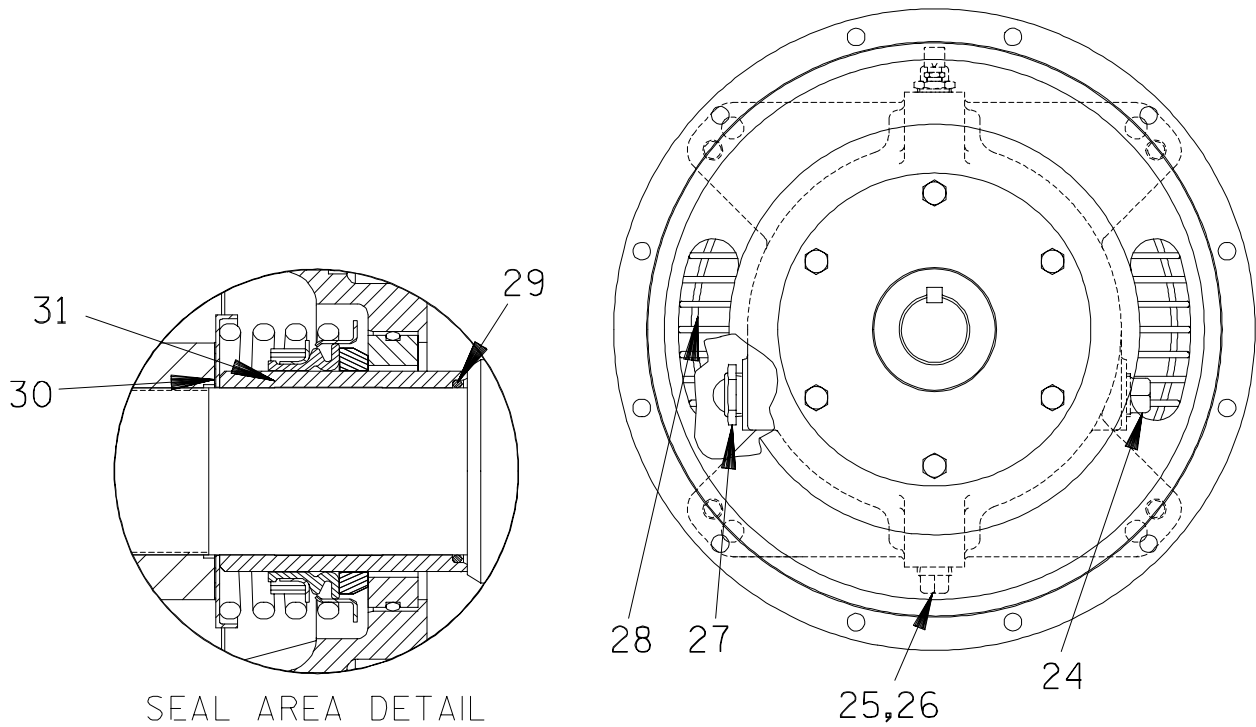
* INDICATES PARTS RECOMMENDED FOR STOCK

THE GORMAN-RUPP COMPANY • MANSFIELD, OHIO

GORMAN-RUPP OF CANADA LIMITED • ST. THOMAS, ONTARIO, CANADA

Printed in U.S.A.

S/N 1304261 Up
PUMP ISSUE 2



THE GORMAN-RUPP COMPANY • MANSFIELD, OHIO

GORMAN-RUPP OF CANADA LIMITED • ST. THOMAS, ONTARIO, CANADA

Printed in U.S.A.

PARTS LIST
44163—430 REPAIR ROTATING ASSEMBLY

ITEM NO.	PART NAME	PART NUMBER	MAT'L CODE	QTY
1	* IMPELLER	38615—092	11010	1
2	* SEAL ASSY	46512—149	---	1
3	* INBOARD BALL BEARING	23422—019	---	1
4	BEARING HOUSING	38251—513	10000	1
5	VENTED PLUG	4823A	15079	1
6	AIR VENT	S1530	---	1
7	RED PIPE BUSHING	AP0802	15079	1
8	* OUTBOARD BALL BRG	23422—414	---	1
9	DRIVE FLANGE	38545—004	10000	1
10	* IMP SHAFT KEY	24113—603	---	REF
11	IMPELLER SHAFT	38515—592	1706H	1
12	* OIL SEAL	S1907	---	1
13	SNAP RING	S720	---	1
14	THRUST WASHER	31134—115	15000	1
15	HEX HD CAPSCREW	B0608	15991	6
16	LOCKWASHER	J06	15991	6
17	* BRG HOUSING GSKT	38683—474	18000	1
18	* OIL SEAL	25227—771	---	1
19	HEX HD CAPSCREW	B0805 1/2	15991	4
20	LOCKWASHER	J08	15991	4
21	SEAL PLATE	38272—256	10000	1
22	SOCKET HD CAPSCREW	DM1004S	17090	1
23	IMPELLER WASHER	31514—015	17000	1
24	PIPE PLUG	P12	15079	1
25	PIPE PLUG	P08	15079	1
26	BRG CVTY DRAIN PLUG	P08	15079	1
27	SIGHT GAUGE	S1471	---	1
28	INTERMEDIATE GUARD	42381—509	24152	2
29	* SHAFT SLEEVE O-RING	25154—131	---	REF
30	* IMPELLER ADJ SHIM SET	48261—057	---	REF
31	* SHAFT SLEEVE	31163—019	1706H	1
32	SHIP PLUG	11495B	15079	1
33	SHIP PLUG	11495B	15079	1
34	BEARING ADJ SHIM SET	13131—3	17040	12
35	* BRG HOUSING O-RING	S1676	---	1
36	* SEAL PLATE O-RING	25152—381	---	1
NOT SHOWN:	INSTRUCTION TAG	6588U	---	1

* INDICATES PARTS RECOMMENDED FOR STOCK

THE GORMAN-RUPP COMPANY • MANSFIELD, OHIO

GORMAN-RUPP OF CANADA LIMITED • ST. THOMAS, ONTARIO, CANADA

Printed in U.S.A.

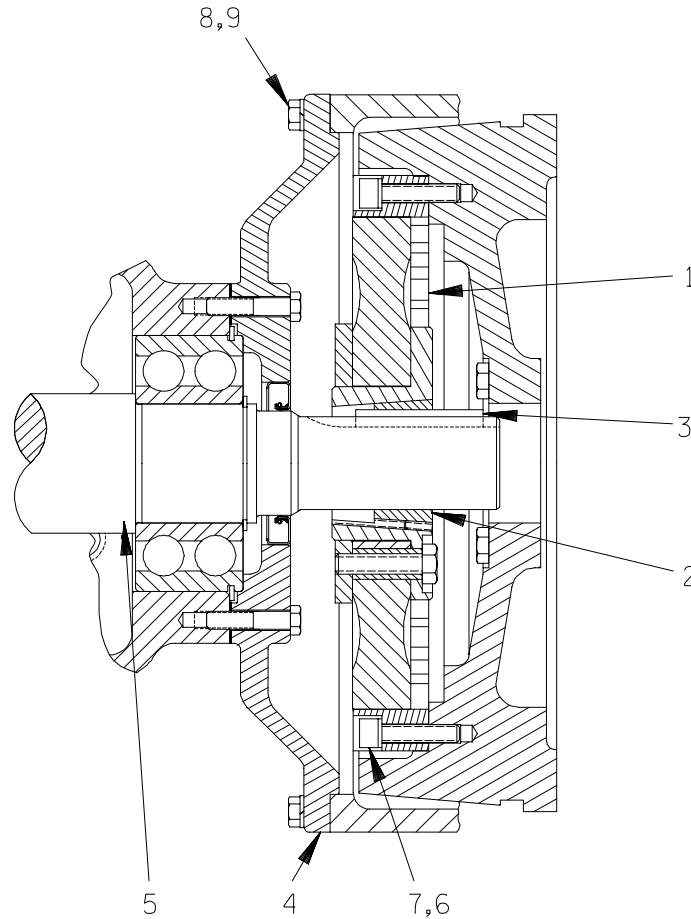
December 02, 2004

©Copyright by the Gorman-Rupp Company

9 of 13

Page 64.6 C3.2

S/N 1304261 Up
PUMP ISSUE 2

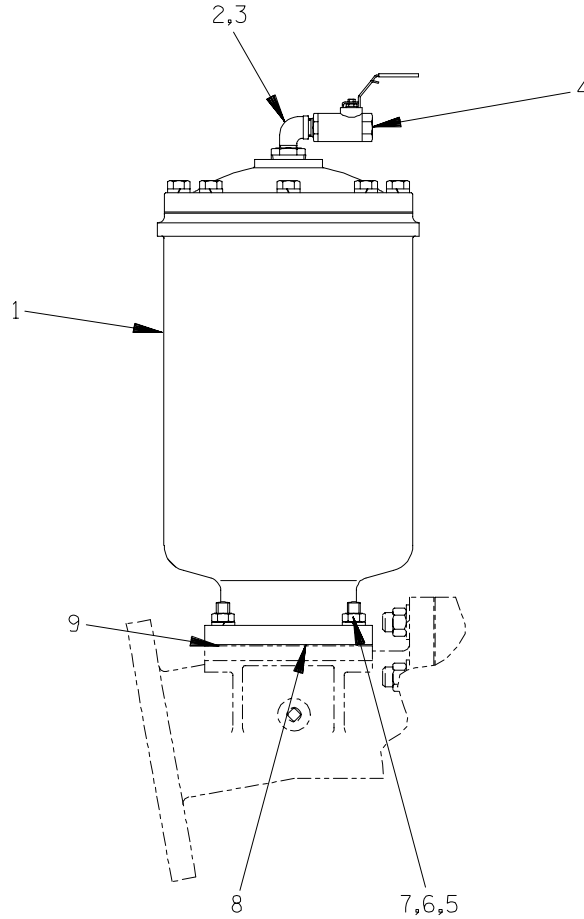


PARTS LIST
44162—159 Drive Assembly

ITEM NO.	PART NAME	PART NUMBER	MAT'L CODE	QTY
1	COUPLING ASSY	44165—016	---	1
2	BUSHING	24131—498	---	1
3	—KEY	24113—603	---	1
4	DRIVE FLANGE	38545—004	10000	1
5	IMPELLER SHAFT	38515—586	1706H	1
6	LOCKWASHER	21171—536	---	8
7	SOCKET HD CAPSCREW	BD0606 1/2	15991	8
8	HEX HD CAPSCREW	B0605	15991	12
9	LOCKWASHER	J06	15991	12

THE GORMAN-RUPP COMPANY • MANSFIELD, OHIO

GORMAN-RUPP OF CANADA LIMITED • ST. THOMAS, ONTARIO, CANADA Printed in U.S.A.



PARTS LIST
48275—005 Priming Chamber Kit

ITEM NO.	PART NAME	PART NUMBER	MAT'L CODE	QTY
1	PRIMING HOPPER ASSY	46112—709	---	1
2	PIPE BUSHING	AP1608	11999	1
3	STREET ELBOW	RS08	11999	1
4	BALL VALVE	26631—052	---	1
5	STUD	C0809	15991	4
6	HEX NUT	D08	15991	4
7	LOCK WASHER	J08	15991	4
8	* GASKET	38687—053	19060	1
9	BAFFLE	31113—011	17000	1

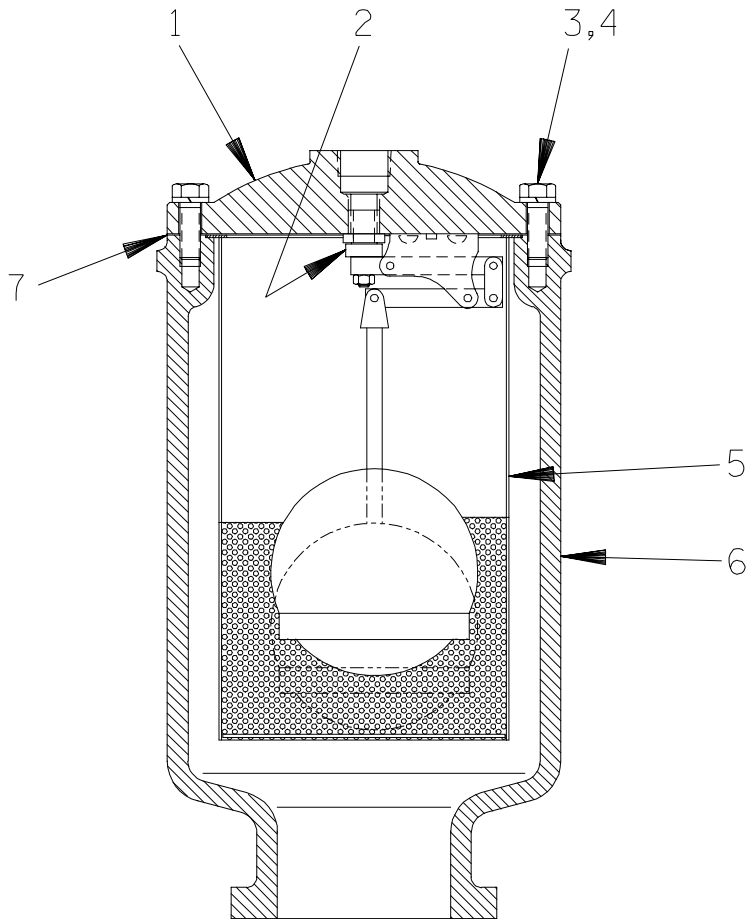
* INDICATES PARTS RECOMMENDED FOR STOCK

THE GORMAN-RUPP COMPANY • MANSFIELD, OHIO

GORMAN-RUPP OF CANADA LIMITED • ST. THOMAS, ONTARIO, CANADA

Printed in U.S.A.

S/N 1304261 Up
PUMP ISSUE 2



PARTS LIST
46112—709 Priming Chamber Assembly

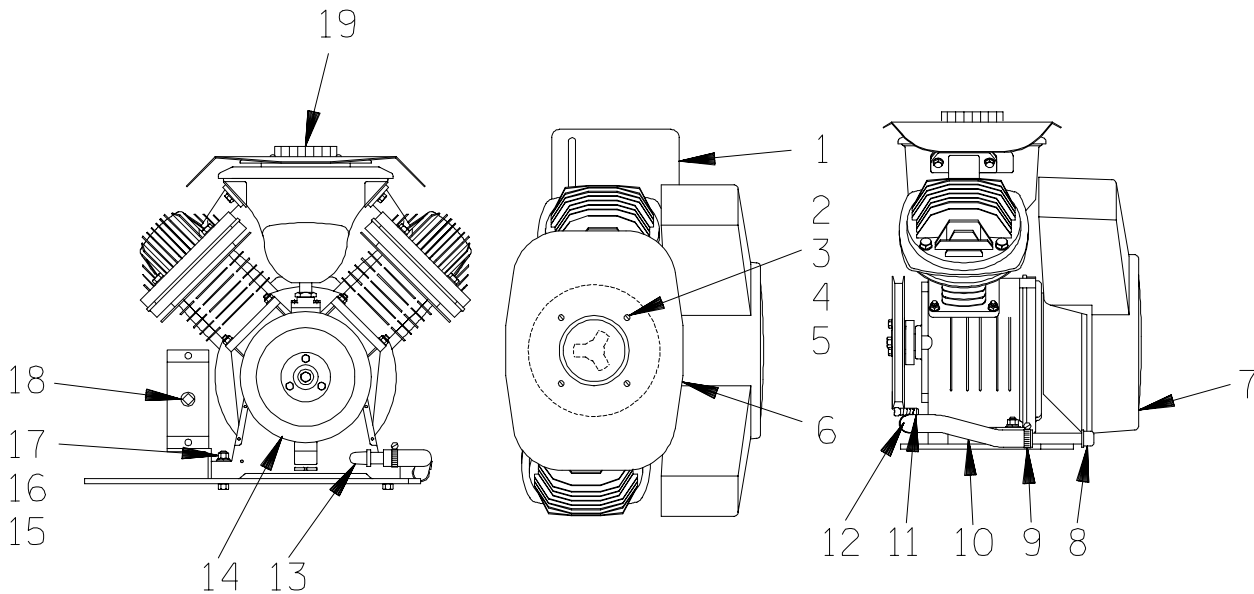
ITEM NO.	PART NAME	PART NUMBER	MAT'L CODE	QTY
1	PRIMING VALVE	26664—007	---	1
2	—ORIFICE BUTTON	26688—021	---	1
3	HEX HD CAPSCREW	B0806	15991	8
4	LOCKWASHER	J08	15991	8
5	STRAINER ASSY	46641—222	17000	1
6	PRIMING CHAMBER	38343—020	10000	1
7	* PRIMING VALVE GASKET	38683—657	19060	1

* INDICATES PARTS RECOMMENDED FOR STOCK

THE GORMAN-RUPP COMPANY • MANSFIELD, OHIO

GORMAN-RUPP OF CANADA LIMITED • ST. THOMAS, ONTARIO, CANADA

Printed in U.S.A.



PARTS LIST
46181—902 Air Compressor Assembly

ITEM NO.	PART NAME	PART NUMBER	MAT'L CODE	QTY
1	A/C MTG PLT	41881—554	24150	1
2	MACH SCREW	X#10—02	15991	4
3	HEX NUT	D#10	15991	4
4	LOCKWASHER	J#10	15991	4
5	FLAT WASHER	K#10	15991	4
6	A/C COVER	38354—043	15120	1
7	AIR COMPRESSOR	26813—111	---	1
8	PIPE CAP	V06	15079	1
9	HOSE CLAMP	26518—683	---	1
10	HOSE	18513—304	---	1
11	HOSE CLAMP	26518—683	---	1
12	PIPE NIPPLE	2434	15070	1
13	PIPE ELBOW	R06	11999	1
14	A/C PULLEY ASSY	44112—001	---	1
15	HEX NUT	D06	15991	4
16	LOCKWASHER	J06	15991	4
17	FLAT WASHER	K06	15991	4
18	PIPE PLUG	P08	15079	1
19	A/C KNOB	38429—501	19220	1

THE GORMAN-RUPP COMPANY • MANSFIELD, OHIO

GORMAN-RUPP OF CANADA LIMITED • ST. THOMAS, ONTARIO, CANADA

Printed in U.S.A.

**For U.S. and International Warranty Information,
Please Visit www.grpumps.com/warranty
or call:
U.S.: 419-755-1280
International: +1-419-755-1352**

**For Canadian Warranty Information,
Please Visit www.grcanada.com/warranty
or call:
519-631-2870**