



PRIME-AIRE[®] **SERIES**
PUMP MODEL
PA6C60 – F4L

MANUAL
PART 2 of 3

PARTS
LIST
WITH
PERFORMANCE CURVE

THE GORMAN-RUPP COMPANY • MANSFIELD, OHIO

GORMAN-RUPP OF CANADA LIMITED • ST. THOMAS, ONTARIO, CANADA Printed in U.S.A.

www.gormanrupp.com

©Copyright by the Gorman-Rupp Company



The engine exhaust from this product contains chemicals known to the State of California to cause cancer, birth defects or other reproductive harm.

PERFORMANCE CURVE – SECTION A

RECORDING MODEL AND SERIAL NUMBERS

Please record the pump model and serial number in the spaces provided below and in the separate Installation/Operation Manual accompanying your pump. Your Gorman-Rupp distributor needs this information when you require parts or service.

Pump Model: _____

Serial Number: _____

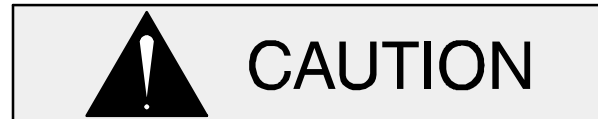
WARRANTY INFORMATION

The pump warranty is provided as part of Gorman-Rupp's support program for customers who operate and maintain their equipment as described in this manual and other accompanying literature. Please note that should the equipment be abused or modified to change its performance beyond the original factory specifications, the warranty will become void and any claim will be denied.

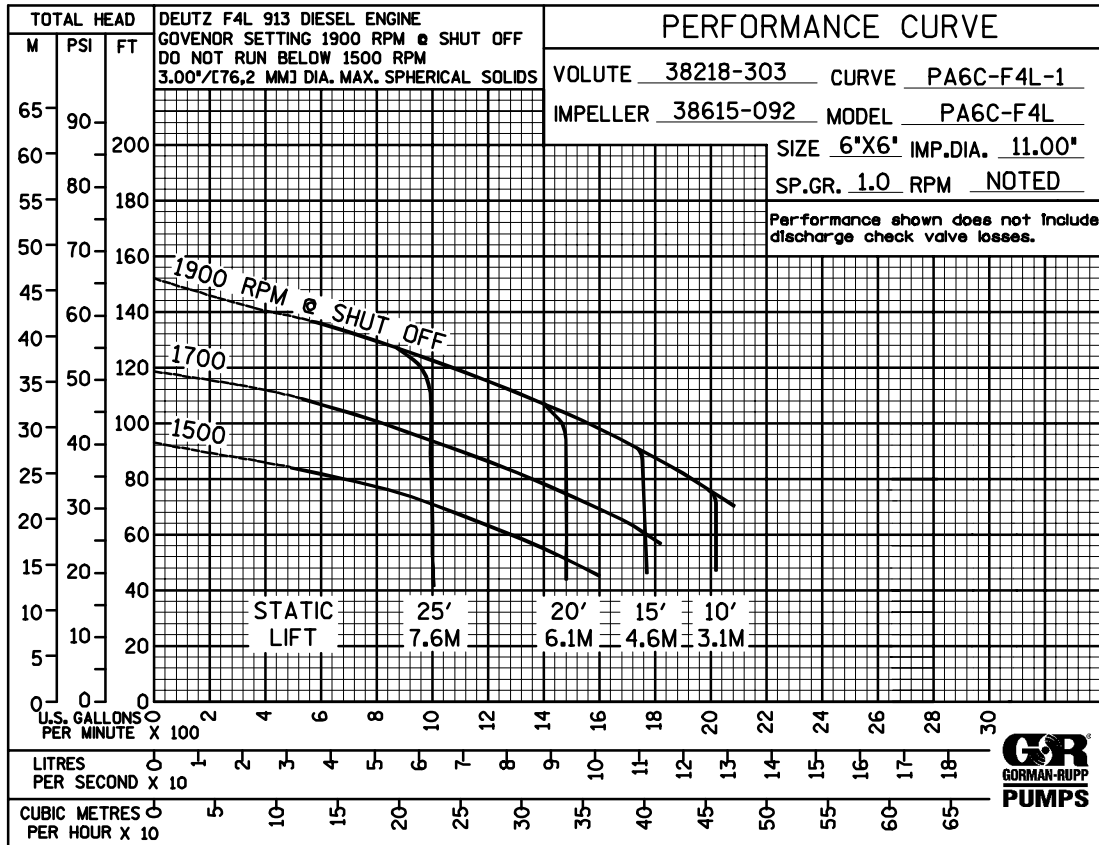
PERFORMANCE CURVE

The performance curve on the following page is based on 70°F (21°C) clear water at sea level, with minimum suction lift. Since pump installations are seldom identical, your performance may be different due to such factors as viscosity, specific gravity, elevation, temperature, and impeller trim.

If your pump serial number is followed by an "N", your pump is **NOT** a standard production model. Contact the Gorman-Rupp Company to verify performance or part numbers.

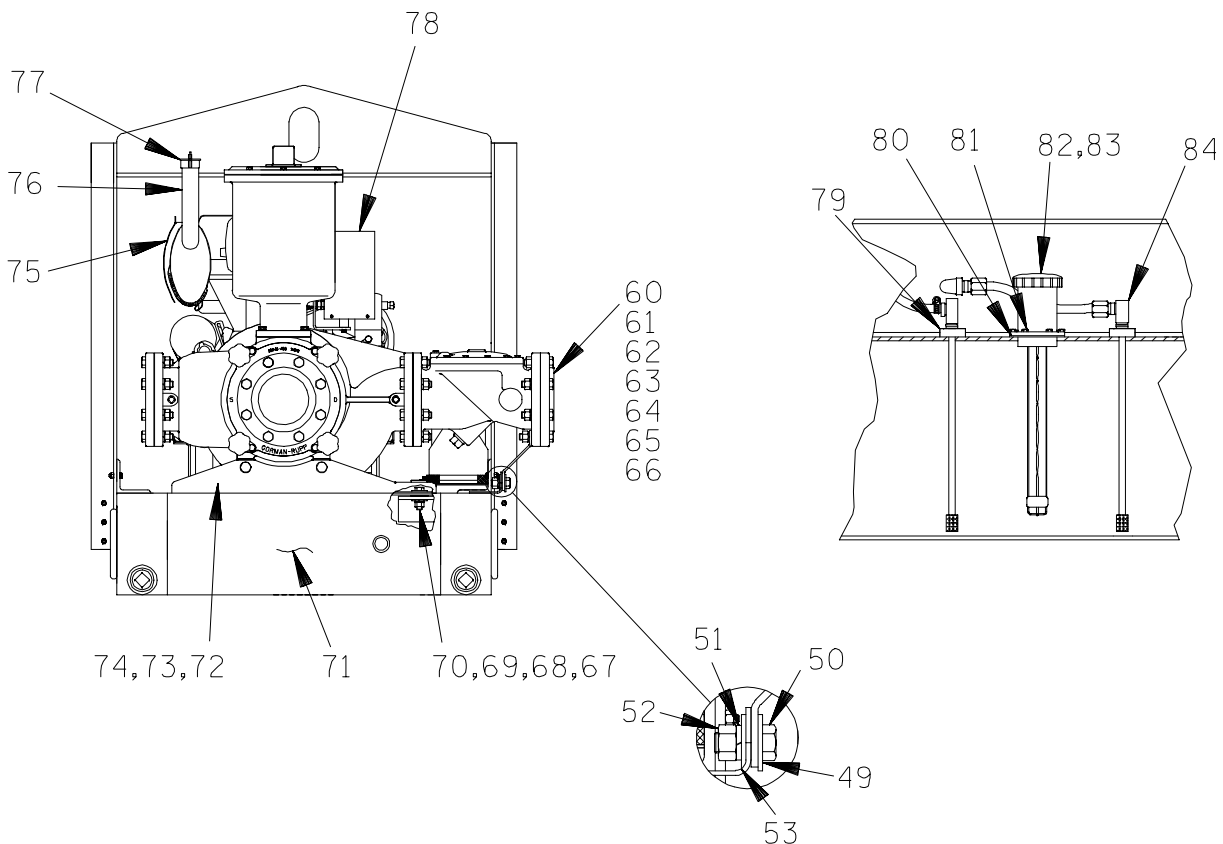
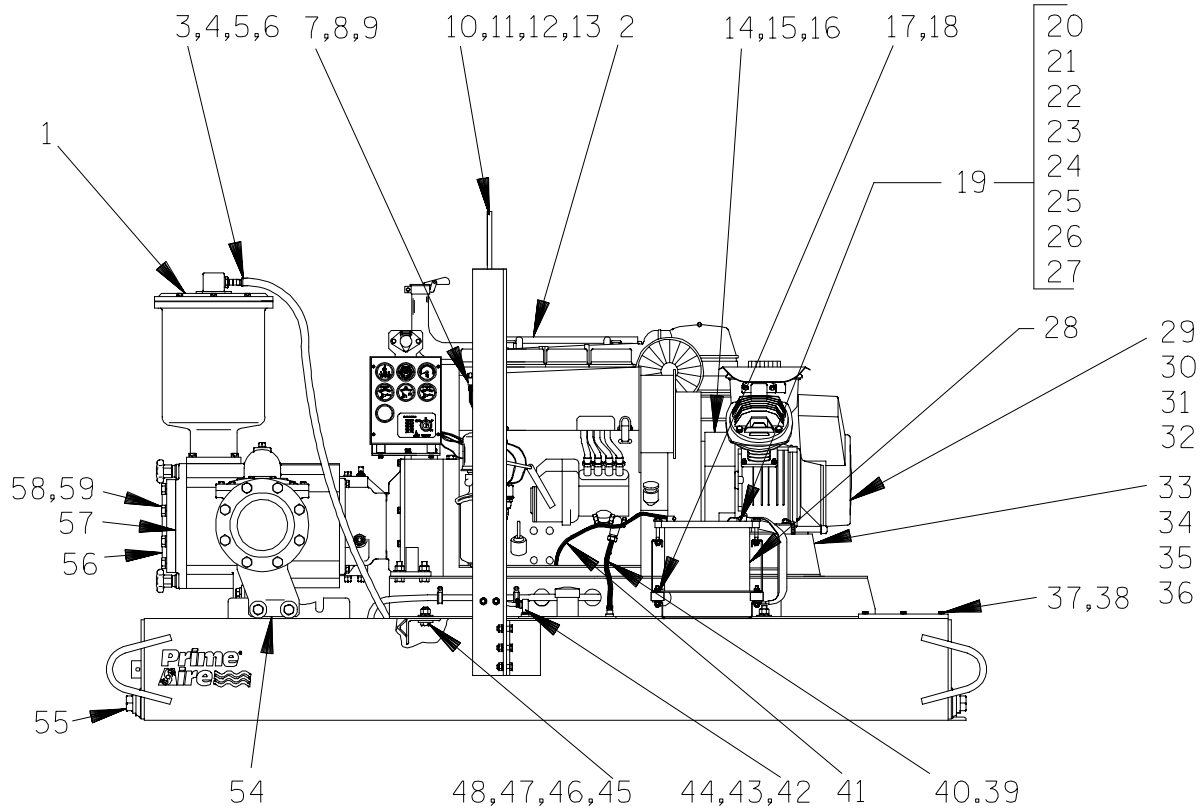


Pump speed and operating condition points must be within the continuous performance range shown on the curve.



Performance Curve – Model PA6C60–F4L

This Page Intentionally Blank



THE GORMAN-RUPP COMPANY • MANSFIELD, OHIO

GORMAN-RUPP OF CANADA LIMITED • ST. THOMAS, ONTARIO, CANADA

Printed in U.S.A.

S/N 1265889 Up
PUMP ISSUE 1

PARTS LIST
PA6C60-F4L Pump Model

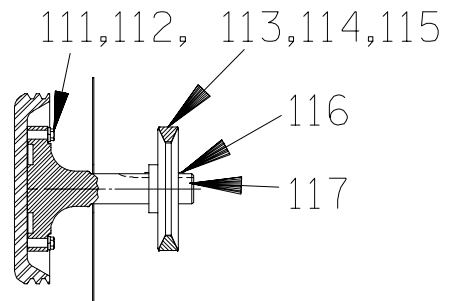
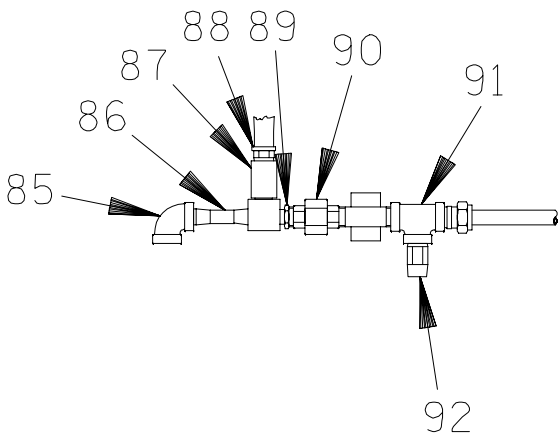
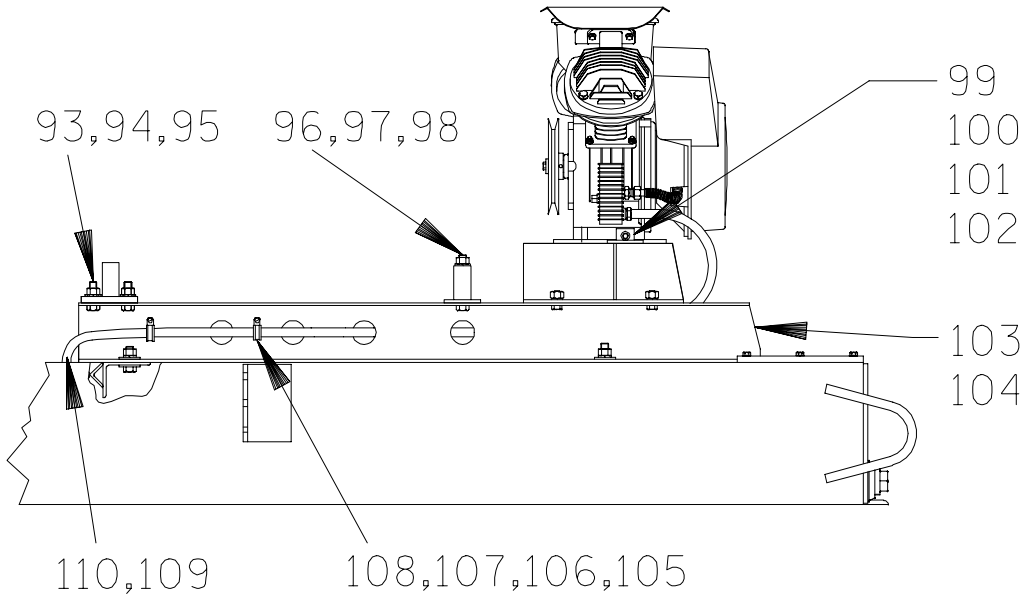
If your pump serial number is followed by an "N", your pump is **NOT** a standard production model. Contact the Gorman-Rupp Company to verify part numbers.

ITEM NO.	PART NAME	PART NUMBER	MAT'L CODE	QTY	ITEM NO.	PART NAME	PART NUMBER	MAT'L CODE	QTY
1	PUMP END ASSEMBLY	PA6C60-(SAE4/10)		1	43	HOSE	11308G	---	1
2	DEUTZ F4L ENGINE	29217-043	---	1	44	HOSE CLAMP	26518-641	---	2
3	REDUCER BUSHING	AP1608	11999	1	45	HEX HD CAPSCREW	B1007	15991	4
4	CONNECTOR	S1598	---	1	46	HEX NUT	D10	15991	4
5	HOSE BARB FTG	26523-047	---	1	47	LOCKWASHER	J10	15991	4
6	HOSE	18513-113	---	1	48	FLAT WASHER	K10	15991	8
7	HOSE	11308A	---	1	49	FLAT WASHER	K12	15991	2
8	HOSE CLAMP	26518-641	---	2	50	HEX HD CAPSCREW	B1207	15991	2
9	HOSE BARB FITTING	26523-386	---	1	51	LOCKWASHER	J12	15991	2
10	LIFTING BAIL	44713-032	24150	1	52	HEX NUT	D12	15991	2
11	HEX HD CAPSCREW	B0805	15991	10	53	FLAT WASHER	K12	15991	2
12	LOCKWASHER	J08	15991	10	54	CHECK VALVE BRKT	34742-014	15080	1
13	HEX NUT	D08	15991	10	55	PIPE PLUG	P32	10009	4
14	BELT GUARD ASSY	42353-020	---	1	56	FLANGE	1758	10010	1
15	HEX HD CAPSCREW	B0604	15991	2	57 *	FLANGE GASKET	25113-036	---	1
16	LOCK WASHER	J06	15991	2	58	HEX HD CAPSCREW	B1208	15991	8
17	STUD MOUNT	24631-006	---	4	59	LOCKWASHER	J12	15991	8
18	HEX NUT W/FLANGE	21765-314	---	8	60	FLANGE	1758	10010	1
19	BATTERY BOX ASSY	GRP40-02E	---	1	61 *	FLANGE GASKET	25113-036	---	1
20	-HEX HD CAPSCREW	B0612	15991	2	62	HEX HD CAPSCREW	B1212	15991	2
21	-HEX NUT W/FLANGE	21765-314	---	2	63	HEX HD CAPSCREW	B1213	15991	4
22	-FLAT WASHER	KE06	15991	2	64	HEX HD CAPSCREW	B1214	15991	2
23	-BATTERY TAG	38818-515	---	1	65	LOCKWASHER	J12	15991	6
24	-GRD CABLE ASSY	47311-064	---	1	66	HEX NUT	D12	15991	8
25	-BATTERY FRAME	8355B	24000	1	67	HEX HD CAPSCREW	B1009	15991	4
26	-BATTERY BOX	34751-006	15120	1	68	FLAT WASHER	KB10	17000	8
27	-T TYPE LOCKWASHER	BL06	15991	1	69	LOCKWASHER	J10	15991	4
28	BATTERY	SEE OPTIONS		REF	70	HEX NUT	D10	15991	4
29	AIR COMPRESSOR ASSY	46181-902	---	1	71	BASE/FUEL TANK	41553-001	24150	1
30	HEX HD CAPSCREW	B0604	15991	4	72	PUMP BRACKET	34268-007	15080	1
31	LOCKWASHER	J06	15991	4	73	HEX HD CAPSCREW	B1206	15991	2
32	FLAT WASHER	K06	15991	4	74	LOCKWASHER	J12	15991	2
33	A/C MTG BRKT ASSY	41881-557	24150	1	75	MUFFLER GUARD ASSY	42331-031	---	1
34	HEX HD CAP SCREW	B0805	15991	4	76	EXHAUST ELBOW	31912-023	15990	1
35	HEX NUT	D08	15991	4	77	RAIN CAP	S1331	---	1
36	LOCKWASHER	J08	15991	4	78	CONT PANEL INST KIT	48122-509	---	1
37	HEX HD CAPSCREW	B0602	15991	3	79	FUEL PICKUP	29332-145	---	1
38	LOCKWASHER	J06	15991	3	80 *	GASKET	38683-270	19060	1
39	HOSE CONNECTOR	S1447	---	1	81	HEX HD MACH SCREW	B#10-02S	15991	6
40	HOSE ASSEMBLY	46341-812	---	1	82	FUEL GAUGE	29332-135	---	1
41	CABLE ASSEMBLY	47311-109	---	1	83	FILL NECK ASSY	46312-017	24152	1
42	HOSE BARB FITTING	26523-386	---	2	84	FUEL PICKUP	29332-145	---	1

* INDICATES PARTS RECOMMENDED FOR STOCK

THE GORMAN-RUPP COMPANY • MANSFIELD, OHIO

GORMAN-RUPP OF CANADA LIMITED • ST. THOMAS, ONTARIO, CANADA Printed in U.S.A.



THE GORMAN-RUPP COMPANY • MANSFIELD, OHIO

GORMAN-RUPP OF CANADA LIMITED • ST. THOMAS, ONTARIO, CANADA

Printed in U.S.A.

June 23, 2003

©Copyright by the Gorman-Rupp Company

3 of 16

Page 64.6 C3.2

S/N 1265889 Up
PUMP ISSUE 1

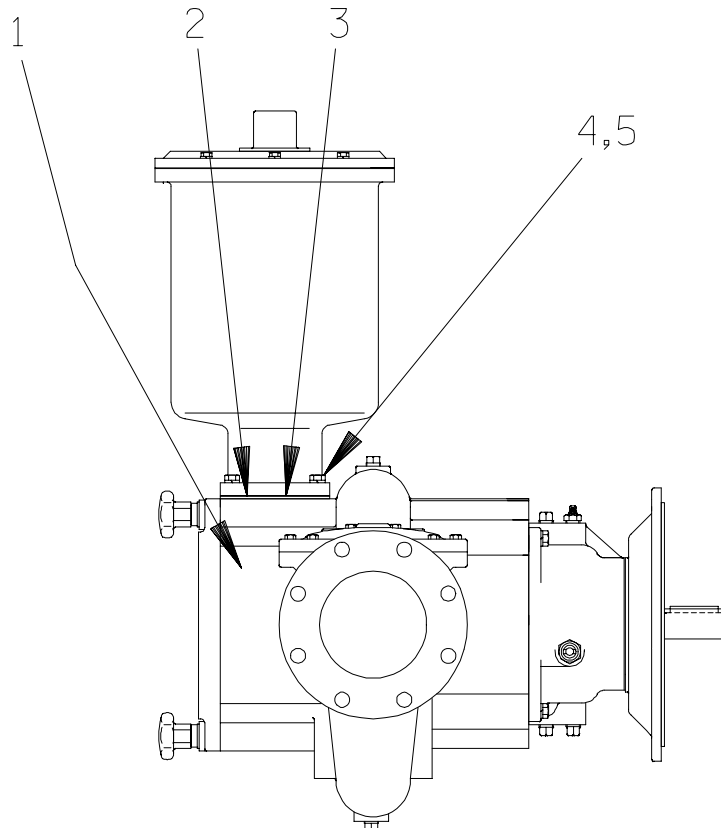
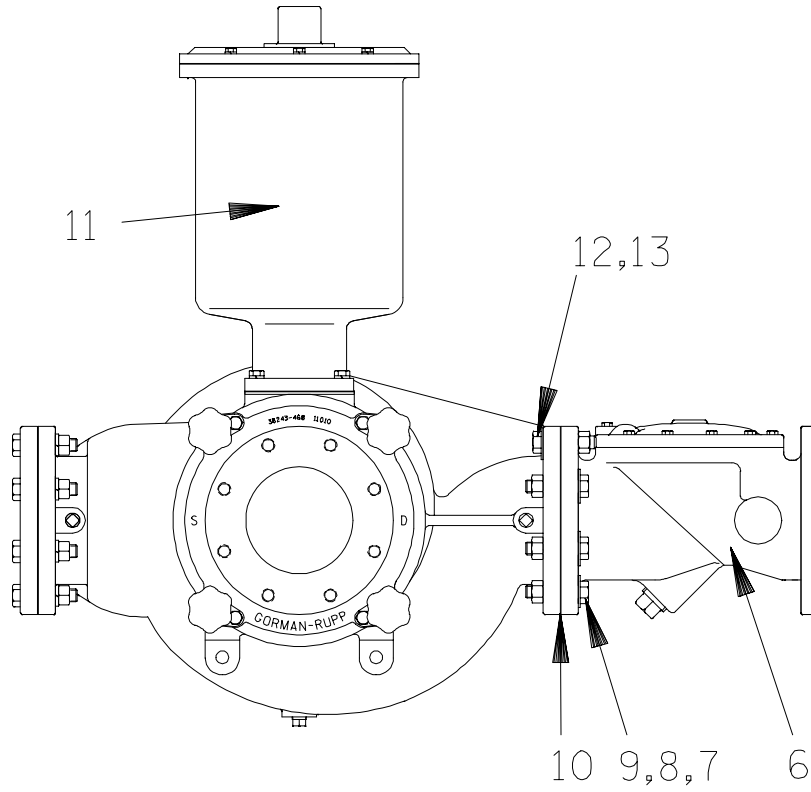
PARTS LIST
PA6C60-F4L Pump Model

ITEM NO.	PART NAME	PART NUMBER	MAT'L CODE	QTY	ITEM NO.	PART NAME	PART NUMBER	MAT'L CODE	QTY
85	PIPE ELBOW	AG08	11999	1	112	LOCKWASHER	21171-510	---	4
86	VENTURI	26817-002	---	1	113	SHEAVE	24214-002	---	1
87	PIPE CPLG	AE08	15079	1	114	BUSHING	24131-553	---	1
88	MALE CONNECTOR	26525-020	---	1	115 *	V-BELT	24166-011	---	1
89	RED PIPE BUSH	AP0806	15079	1	116 *	KEY	N0405	15990	1
90	PIPE UNION	AH08	11999	1	117	CRANKSHAFT EXT	38531-009	11010	1
91	TEE 1/2"	U08	11999	1	NOT SHOWN:				
92	RELIEF VALVE	26662-028	---	1		LUBE DECAL	38816-079	---	1
93	HEX HD CAPSCREW	B1008	15991	4		SUCTION STICKER	6588AG	---	1
94	HEX NUT	D10	15991	4		DISCHARGE STICKER	6588BJ	---	1
95	LOCK WASHER	J10	15991	4		CAUTION DECAL	2613FJ	---	1
96	HEX HD CAPSCREW	B1017	15991	2		WARNING DECAL	38816-218	---	2
97	HEX NUT	D10	15991	2		PRIME AIRE DECAL	38812-078	---	2
98	LOCKWASHER	J10	15991	2		WARNING DECAL	2613FE	---	2
99	MOTOR TENSIONER	41327-031	24150	1		G-R DECAL	GR-06	---	4
100	HEX NUT	D08	15991	1		INSTR TAG	38817-009	---	1
101	LOCKWASHER	J08	15991	1		ENG START-UP TAG	38816-269	---	1
102	FLAT WASHER	K08	15991	1		NAME PLATE	38818-127	13000	1
103	ENG SUPP BRKT/LH	34451-077	15080	1		DRIVE SCREW	BM#04-03	17000	4
104	ENG SUPP BRKT/RH	34451-076	15080	1		STRAINER	7823A	24000	1
105	HEX HD CAPSCREW	B#10-03	15991	2		WARNING DECAL	38816-330	---	2
106	HEX NUT	D#10	15991	2		INSTRUCTION DECAL	38818-140	---	1
107	LOCKWASHER	J#10	15991	2		FLOAT SWITCH KIT	48312-980	---	1
108	CABLE CLAMP	27111-346	---	2	OPTIONS:				
109	HOSE	18513-304	---	1		12V BATTERY	29331-515	---	1
110	HOSE BARB FITTING	26525-021	---	2					
111	CAP SCREW	22645-136	---	4					

* INDICATES PARTS RECOMMENDED FOR STOCK

THE GORMAN-RUPP COMPANY • MANSFIELD, OHIO

GORMAN-RUPP OF CANADA LIMITED • ST. THOMAS, ONTARIO, CANADA Printed in U.S.A.



THE GORMAN-RUPP COMPANY • MANSFIELD, OHIO

GORMAN-RUPP OF CANADA LIMITED • ST. THOMAS, ONTARIO, CANADA

Printed in U.S.A.

June 23, 2003

©Copyright by the Gorman-Rupp Company

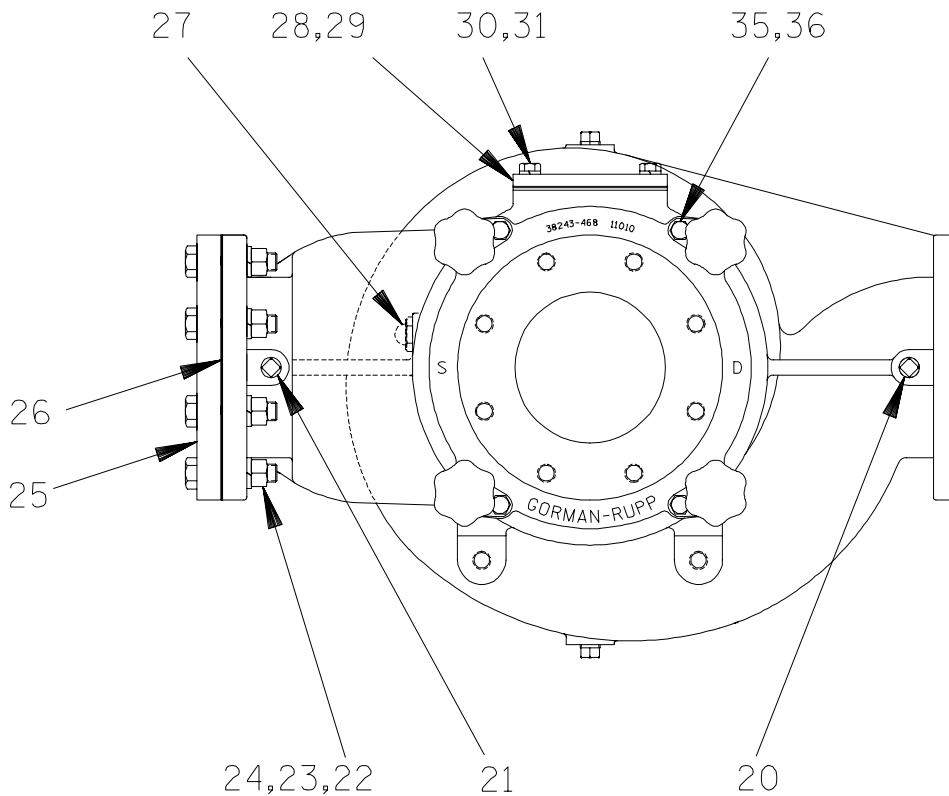
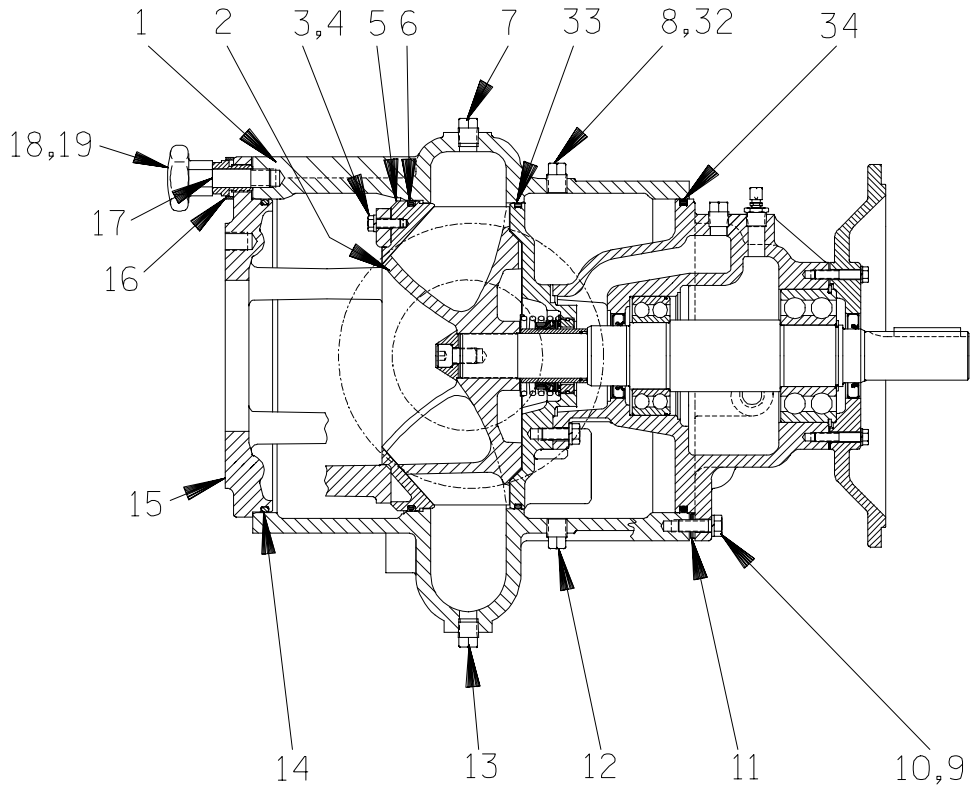
5 of 16

Page 64.6 C3.2

PARTS LIST
PA6C60-(SAE4/10) Pump Assembly

ITEM NO.	PART NAME	PART NUMBER	MAT'L CODE	QTY
1	PUMP END ASSEMBLY	66F60-(SAE4/10)	---	1
2	BAFFLE	31113-011	17000	1
3	* GASKET	38687-053	19060	1
4	HEX HD CAPSCREW	B0806	15991	4
5	LOCKWASHER	JO8	15991	4
6	CHECK VALVE ASSY	26642-126	---	1
7	HEX HD CAPSCREW	B1213	15991	6
8	LOCKWASHER	J12	15991	6
9	HEX NUT	D12	15991	6
10	* GASKET	25113-036	---	1
11	PRIMING CHAMBER ASSY	46112-704	---	1
12	HEX HD CAPSCREW	B1212	15991	2
13	HEX NUT	D12	15991	2

* INDICATES PARTS RECOMMENDED FOR STOCK



THE GORMAN-RUPP COMPANY • MANSFIELD, OHIO

GORMAN-RUPP OF CANADA LIMITED • ST. THOMAS, ONTARIO, CANADA

Printed in U.S.A.

S/N 1265889 Up
PUMP ISSUE 1

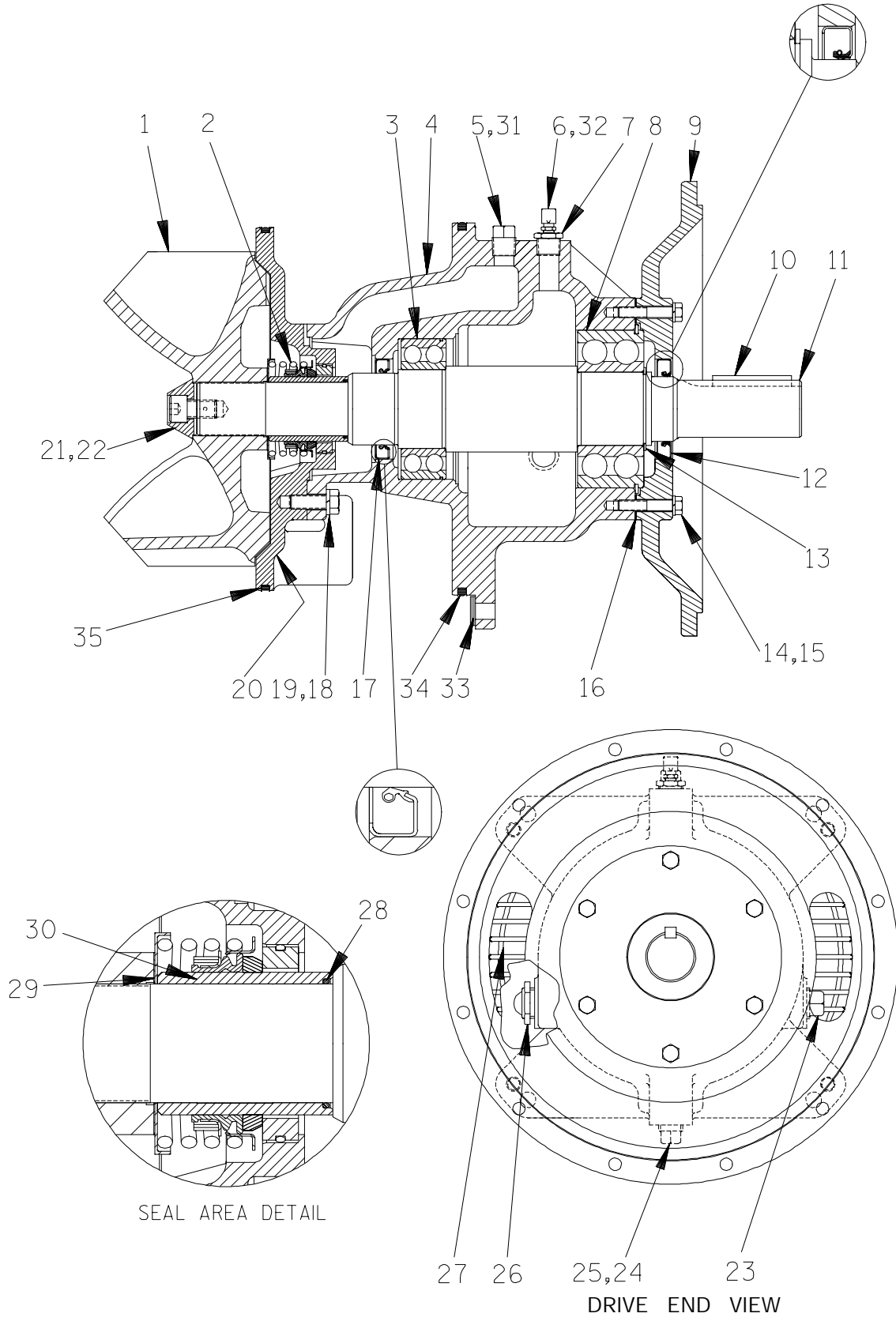
PARTS LIST
66F60--(SAE4/10) Pump End Assembly

ITEM NO.	PART NAME	PART NUMBER	MAT'L CODE	QTY	ITEM NO.	PART NAME	PART NUMBER	MAT'L CODE	QTY
1	PUMP CASING	38218-303	11010	1	25	BLIND FLANGE ASSY	42111-349	---	1
2	REPAIR ROTATING ASSY	44163-253	---	1	26 *	GASKET	25113-036	---	1
3	HEX HD CAPSCREW	B06041/2	17000	4	27	SIGHT GAUGE	S1471	---	1
4	LOCKWASHER	J06	17090	4	28	COVER PLATE	33541-045	15080	1
5 *	WEAR PLATE	38691-864	11010	1	29 *	GASKET	38687-053	19060	1
6 *	O-RING	25152-453	---	1	30	HEX HD CAPSCREW	B0805	15991	4
7	PIPE PLUG	P08	15079	1	31	LOCKWASHER	J08	15991	4
8	VENTED PLUG	4823A	15079	1	32	SHIP PLUG	11495B	15079	1
9	HEX HD CAPSCREW	B0806	15991	4	33 *	O-RING	25152-381	---	1
10	LOCKWASHER	J08	15991	4	34 *	O-RING	S1676	---	1
11 *	ADJ SHIM	13131-3	17040	12	35	HEX HD CAPSCREW	B08041/2	15991	4
12	PIPE PLUG	P08	15079	1	36	LOCKWASHER	J08	15991	4
13	PIPE PLUG	P08	15079	1	NOT SHOWN:				
14 *	O-RING	S1676	---	1		DRIVE ASSEMBLY	44162-159	---	1
15	BACK COVER PLATE	38243-468	11010	1		PIPE PLUG	P12	15079	1
16	LOCKING COLLAR	38115-551	15001	4		OIL LEVEL DECAL	38816-123	---	1
17	ADJ SCREW	31871-070	1500X	4	ALTERNATE PARTS:				
18	STUD	C1213	15991	4		60 SERIES NAME PLATE	2613R	13990	1
19	HAND KNOB	38115-901	10000	4		DRIVE SCREW	BM#04-03	17000	2
20	PIPE PLUG	P08	15079	1		PA SERIES NAME PLATE	38818-127	13000	1
21	PIPE PLUG	P08	15079	1		DRIVE SCREW	BM#04-03	17000	4
22	HEX HD CAPSCREW	B1213	15991	8					
23	LOCKWASHER	J12	15991	8					
24	HEX NUT	D12	15991	8					

* INDICATES PARTS RECOMMENDED FOR STOCK

THE GORMAN-RUPP COMPANY • MANSFIELD, OHIO

GORMAN-RUPP OF CANADA LIMITED • ST. THOMAS, ONTARIO, CANADA Printed in U.S.A.



THE GORMAN-RUPP COMPANY • MANSFIELD, OHIO

GORMAN-RUPP OF CANADA LIMITED • ST. THOMAS, ONTARIO, CANADA

Printed in U.S.A.

S/N 1265889 Up
PUMP ISSUE 1

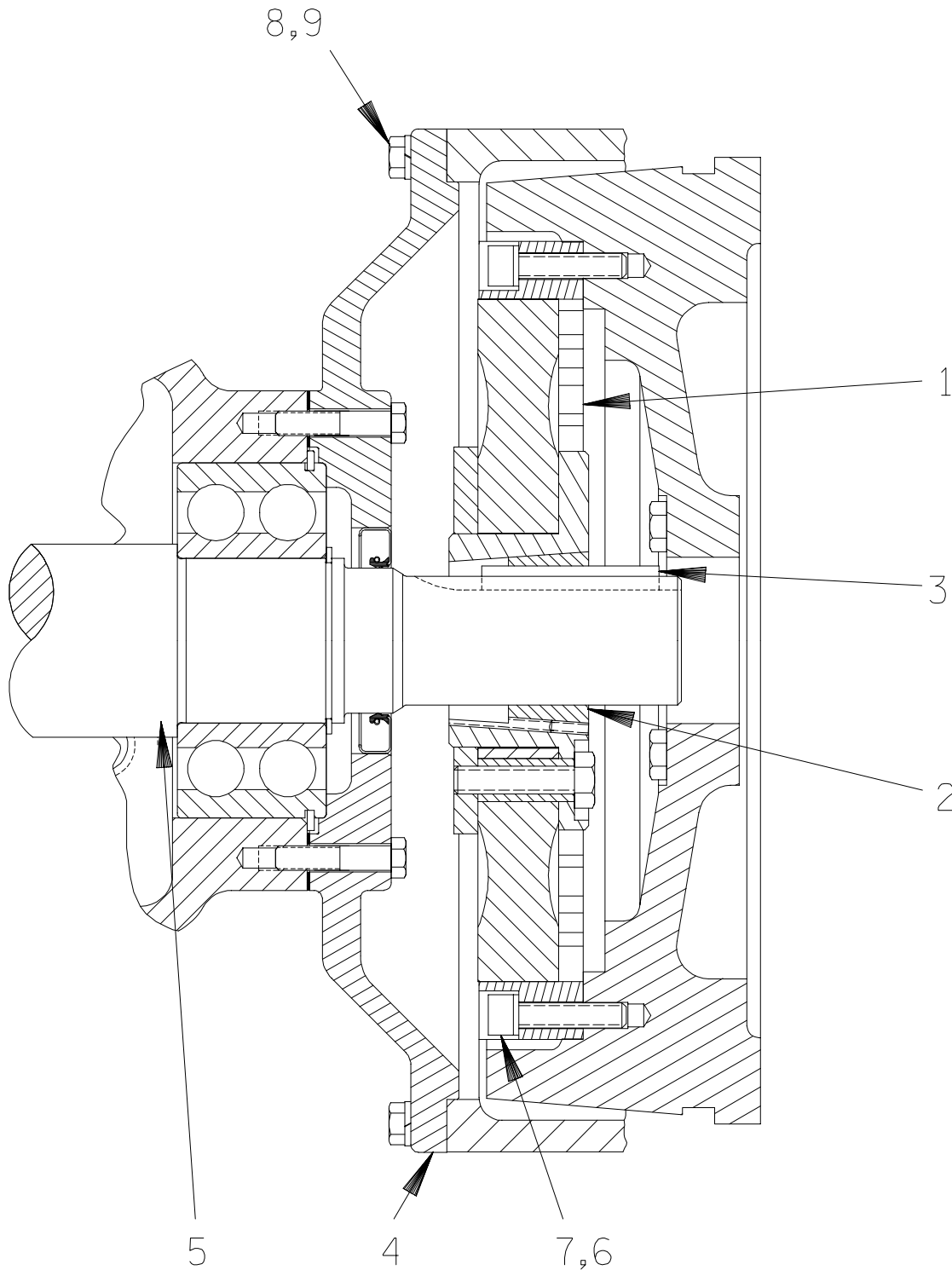
PARTS LIST
44163-253 REPAIR ROTATING ASSEMBLY

ITEM NO.	PART NAME	PART NUMBER	MAT'L CODE	QTY	ITEM NO.	PART NAME	PART NUMBER	MAT'L CODE	QTY
1	IMPELLER	38615-092	11010	1	20 *	SEAL PLATE	38272-256	10000	1
2 *	SEAL ASSEMBLY	46512-149	---	1	21	SOC HD CAPSCREW	DM1004S	17090	1
3 *	BALL BEARING	23422-019	---	1	22	IMPELLER WASHER	31514-015	17000	1
4	BEARING HOUSING	38251-513	10000	1	23	PIPE PLUG	P12	15079	1
5	VENTED PLUG	4823A	15079	1	24	PIPE PLUG	P08	15079	1
6	AIR VENT	S1530	---	1	25	PIPE PLUG	P08	15079	1
7	RED PIPE BUSH	AP0802	15079	1	26	SIGHT GAUGE	S1471	---	1
8 *	BALL BEARING	23422-414	---	1	27	INTERMEDIATE GUARD	42381-509	24152	2
9	DRIVE FLANGE	38545-004	10000	1	28 *	O-RING	25154-131	---	1
10 *	SHAFT KEY	N0812	15990	REF	29 *	IMP ADJ SHIM SET	48261-057	---	1
11 *	IMPELLER SHAFT	38515-586	1706H	1	30 *	SHAFT SLEEVE	31163-019	1706H	1
12 *	OIL SEAL	S1907	---	1	31	SHIP PLUG	11495B	15079	1
13	SNAP RING	S720	---	1	32	SHIP PLUG	11495B	15079	1
14	HEX HD CAPSCREW	B0608	15991	6	33 *	ROT ASSY ADJ SHIM	13131-3	17040	12
15	LOCK WASHER	J06	15991	6	34 *	O-RING	S1676	---	1
16 *	GASKET	38683-474	18000	1	35 *	O-RING	25152-381	---	1
17 *	OIL SEAL	25227-771	---	1					
18	HEX HD CAPSCREW	B08051/2	15991	4	NOT SHOWN:				
19	LOCKWASHER	J08	15991	4	INSTRUCTION TAG	6588U	---		1

* INDICATES PARTS RECOMMENDED FOR STOCK

THE GORMAN-RUPP COMPANY • MANSFIELD, OHIO

GORMAN-RUPP OF CANADA LIMITED • ST. THOMAS, ONTARIO, CANADA Printed in U.S.A.



THE GORMAN-RUPP COMPANY • MANSFIELD, OHIO

GORMAN-RUPP OF CANADA LIMITED • ST. THOMAS, ONTARIO, CANADA

Printed in U.S.A.

June 23, 2003

©Copyright by the Gorman-Rupp Company

11 of 16

Page 64.6 C3.2

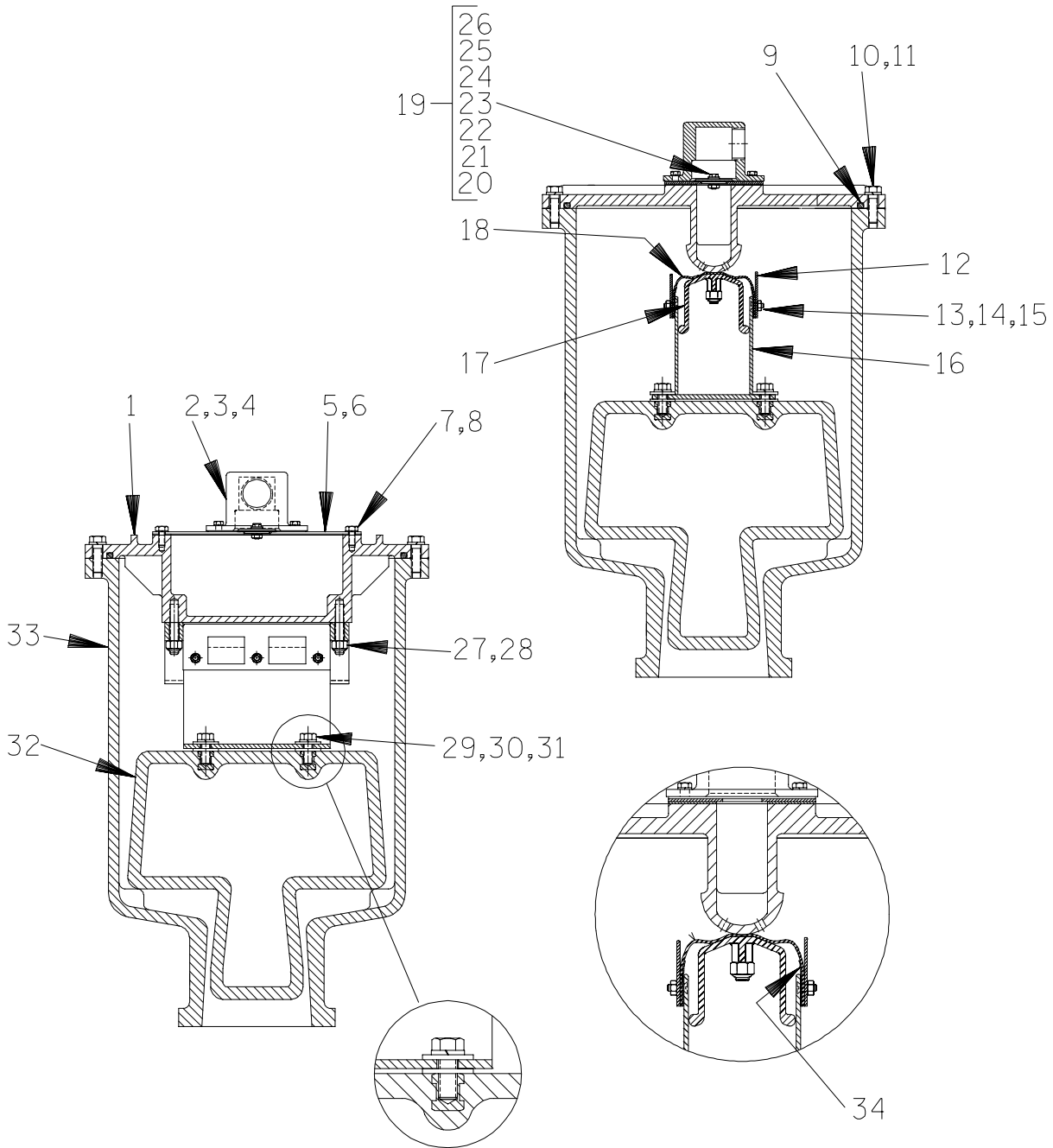
S/N 1265889 Up
PUMP ISSUE 1

PARTS LIST
44162-159 Drive Assembly

ITEM NO.	PART NAME	PART NUMBER	MAT'L CODE	QTY
1	COUPLING ASSY	44165-016	---	1
2	BUSHING	24131-498	---	1
3	KEY	N0812	15990	REF
4	DRIVE FLANGE	38545-004	10000	REF
5	IMPELLER SHAFT	38515-586	1706H	REF
6	LOCKWASHER	21171-536	---	8
ALTERNATE PARTS:				
7	SOCKET HD CAPSCREW	22644-220	---	8
8	HEX HD CAPSCREW	22645-164	---	12
9	LOCKWASHER	21171-511	---	12
NOT SHOWN:				
	INSTALLATION DRAWING	GL-05086	---	1

THE GORMAN-RUPP COMPANY • MANSFIELD, OHIO

GORMAN-RUPP OF CANADA LIMITED • ST. THOMAS, ONTARIO, CANADA Printed in U.S.A.



THE GORMAN-RUPP COMPANY • MANSFIELD, OHIO

GORMAN-RUPP OF CANADA LIMITED • ST. THOMAS, ONTARIO, CANADA

Printed in U.S.A.

June 23, 2003

©Copyright by the Gorman-Rupp Company

13 of 16

Page 64.6 C3.2

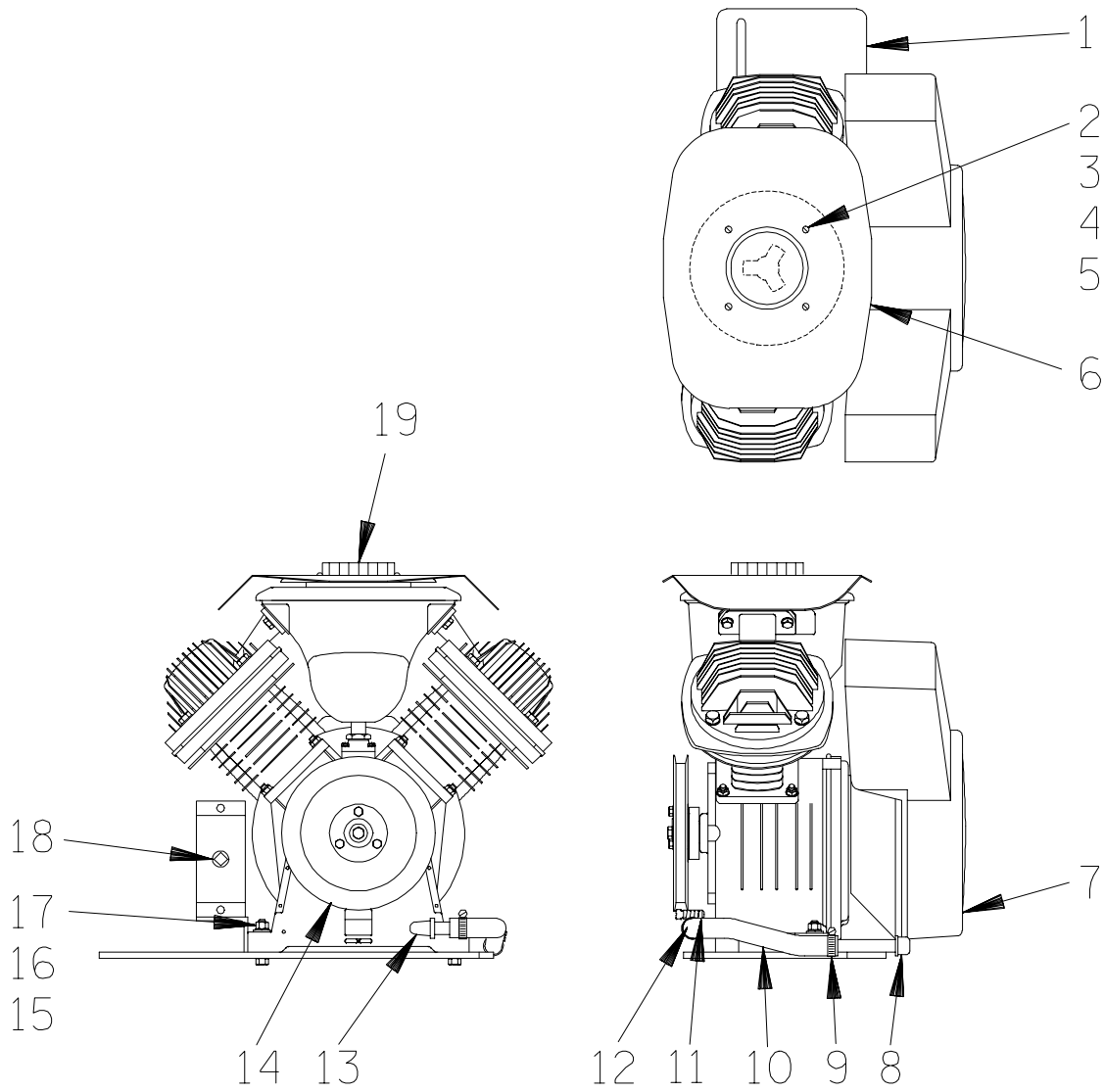
S/N 1265889 Up
PUMP ISSUE 1PARTS LIST
46181-702 Priming Chamber Assembly

ITEM NO.	PART NAME	PART NUMBER	MAT'L CODE	QTY
1	PRIMING CHAMBER LID	38346-615	1300U	1
2	PEELER VALVE NECK	38349-413	10000	1
3	HEX HD CAPSCREW	B04031/2	15991	4
4	LOCKWASHER	J04	15991	4
5	* VALVE PLATE GASKET	38687-555	19060	1
6	VALVE PLATE	33541-040	17000	1
7	HEX HD CAPSCREW	B04021/2	15991	4
8	LOCK WASHER	J04	15991	4
9	* LINEAR O-RING	18512-056	---	1
10	HEX HD CAPSCREW	B0605	15991	12
11	LOCKWASHER	J06	15991	12
12	GUIDE PLATE	33522-009	17000	2
13	FLAT HD CAPSCREW	F#10-03	17000	6
14	LOCKWASHER	J#10	17000	6
15	HEX NUT	D#10	17000	6
16	VLV STRAP BRKT ASSY	41881-597	2415X	1
17	CLAMP PLATE	38349-411	14000	1
18	VALVE STRAP	33276-041	19410	1
19	CHECK VALVE ASSY	46411-112	---	1
20	-CHECK VALVE	38671-413	19020	1
21	-LOCKWASHER	J#10	17000	1
22	-HEX NUT	D#10	17000	1
23	-FLAT WASHER	21161-810	---	1
24	-HEX HD CAPSCREW	B#10-02	17000	1
25	-FLAT WASHER	21161-811	---	1
26	-SEALING WASHER	25123-056	---	1
27	STUD	C0607	17000	2
28	HEX LOCK NUT	DD06	17000	2
29	HEX HD CAPSCREW	B0604	17000	4
30	LOCKWASHER	J06	17000	4
31	FLAT WASHER	KB06	17000	8
32	PRIM VALVE FLOAT	38349-412	19220	1
33	PRIMING CHAMBER	38343-018	10000	1
34	VALVE STRAP PROTECTOR	33271-019	19000	2

* INDICATES PARTS RECOMMENDED FOR STOCK

THE GORMAN-RUPP COMPANY • MANSFIELD, OHIO

GORMAN-RUPP OF CANADA LIMITED • ST. THOMAS, ONTARIO, CANADA Printed in U.S.A.



THE GORMAN-RUPP COMPANY • MANSFIELD, OHIO

GORMAN-RUPP OF CANADA LIMITED • ST. THOMAS, ONTARIO, CANADA

Printed in U.S.A.

June 23, 2003

©Copyright by the Gorman-Rupp Company

15 of 16

Page 64.6 C3.2

S/N 1265889 Up
PUMP ISSUE 1

PARTS LIST
46181 – 902 Air Compressor Assembly

ITEM NO.	PART NAME	PART NUMBER	MAT'L CODE	QTY
1	A/C MTG PLT	41881-554	24150	1
2	MACH SCREW	X#10-02	15991	4
3	HEX NUT	D#10	15991	4
4	LOCKWASHER	J#10	15991	4
5	FLAT WASHER	K#10	15991	4
6	A/C COVER	38354-043	15120	1
7	AIR COMPRESSOR	26813-111	---	1
8	PIPE CAP	V06	15079	1
9	HOSE CLAMP	26518-683	---	1
10	HOSE	18513-304	---	1
11	HOSE CLAMP	26518-683	---	1
12	PIPE NIPPLE	2434	15070	1
13	PIPE ELBOW	R06	11999	1
14	A/C PULLEY ASSY	44112-001	---	1
15	HEX NUT	D06	15991	4
16	LOCKWASHER	J06	15991	4
17	FLAT WASHER	K06	15991	4
18	PIPE PLUG	P08	15079	1
19	A/C KNOB	38429-501	19220	1

**For U.S. and International Warranty Information,
Please Visit www.grpumps.com/warranty
or call:
U.S.: 419-755-1280
International: +1-419-755-1352**

**For Canadian Warranty Information,
Please Visit www.grcanada.com/warranty
or call:
519-631-2870**