



**10 SERIES  
PUMP MODEL  
14D52-CH23 S/G**

**MANUAL  
PART 2 of 3**

**PARTS  
LIST  
WITH  
PERFORMANCE CURVE**

**THE GORMAN-RUPP COMPANY • MANSFIELD, OHIO**

GORMAN-RUPP OF CANADA LIMITED • ST. THOMAS, ONTARIO, CANADA Printed in U.S.A.

[www.gormanrupp.com](http://www.gormanrupp.com)

©Copyright by the Gorman-Rupp Company



The engine exhaust from this product contains chemicals known to the State of California to cause cancer, birth defects or other reproductive harm.

## PERFORMANCE CURVE – SECTION A

### RECORDING MODEL AND SERIAL NUMBERS

Please record the pump model and serial number in the spaces provided below and in the separate Installation/Operation Manual accompanying your pump. Your Gorman-Rupp distributor needs this information when you require parts or service.

Pump Model: \_\_\_\_\_

Serial Number: \_\_\_\_\_

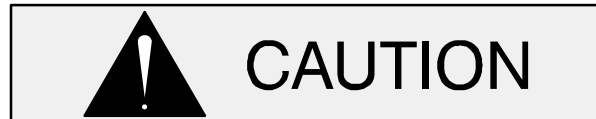
### WARRANTY INFORMATION

The pump warranty is provided as part of Gorman-Rupp's support program for customers who operate and maintain their equipment as described in this manual and other accompanying literature. Please note that should the equipment be abused or modified to change its performance beyond the original factory specifications, the warranty will become void and any claim will be denied.

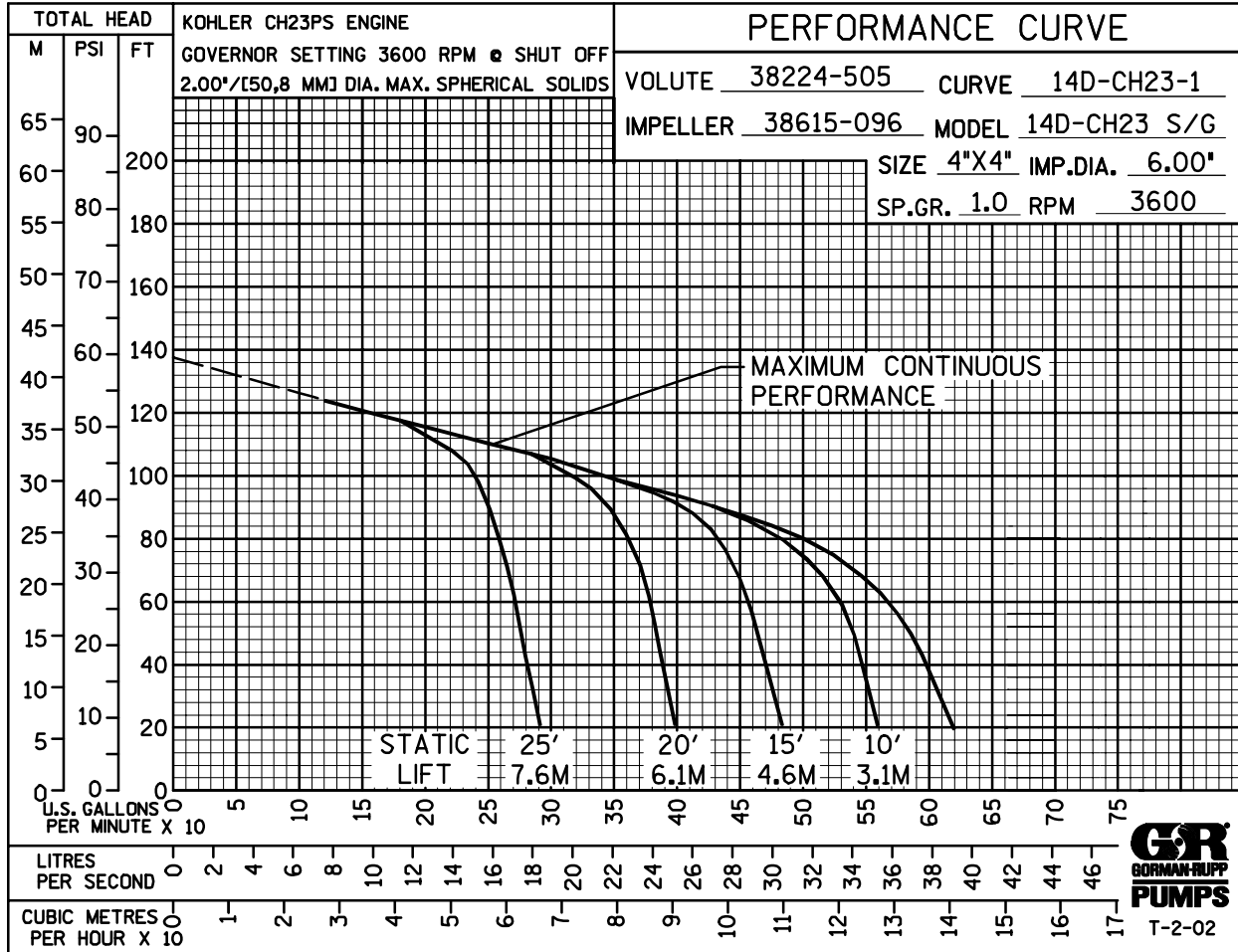
### PERFORMANCE CURVE

The performance curve on the following page is based on 70° F (21° C) clear water at sea level with minimum suction lift. Since pump installations are seldom identical, your performance may be different due to such factors as viscosity, specific gravity, elevation, temperature, and impeller trim.

If your pump serial number is followed by an "N", your pump is **NOT** a standard production model. Contact the Gorman-Rupp Company to verify performance or part numbers.

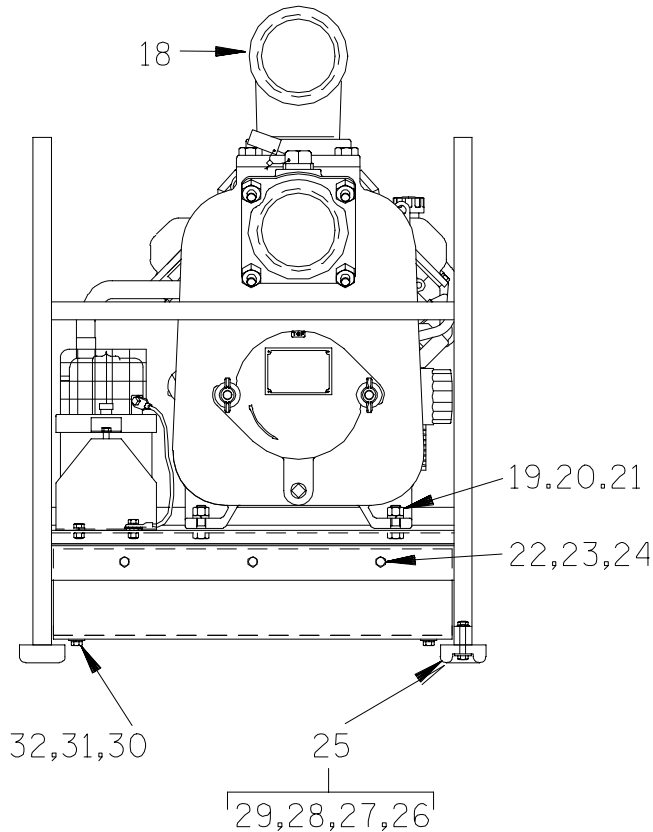
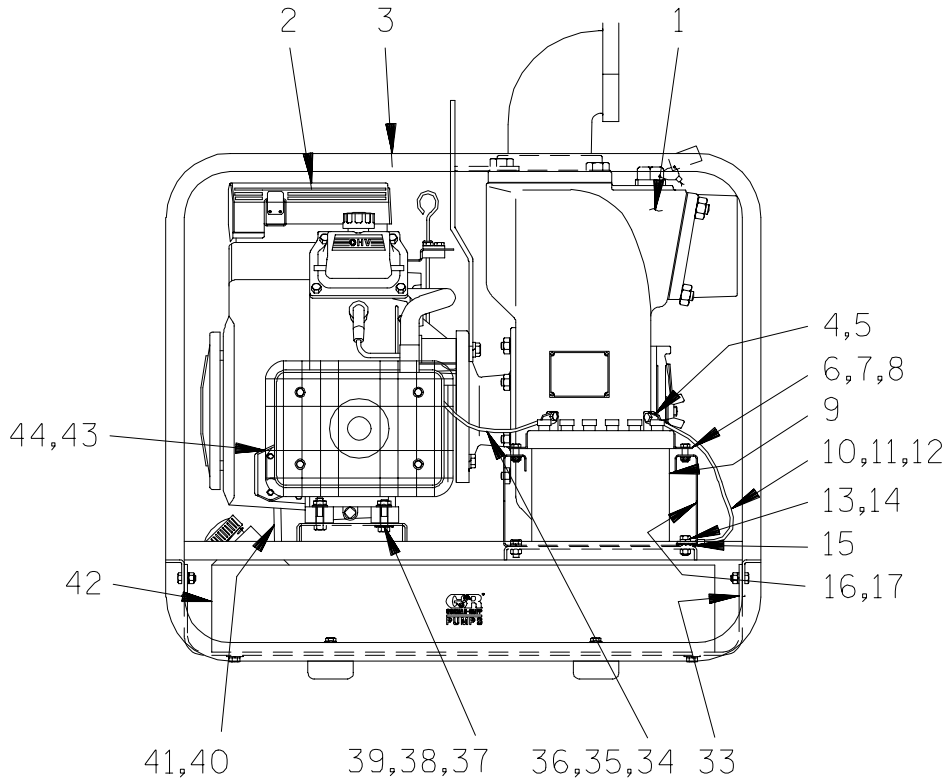


Pump speed and operating condition points must be within the continuous performance range shown on the curve.



**Performance Curve – Model 14D52-CH23 S/G**

**This Page Intentionally Blank**



**THE GORMAN-RUPP COMPANY • MANSFIELD, OHIO**

GORMAN-RUPP OF CANADA LIMITED • ST. THOMAS, ONTARIO, CANADA

Printed in U.S.A.

**14D52-CH23 S/G**  
**14D52-(CH23)**

ACDEU

S/N 1246731 Up  
PUMP ISSUE 1

**PARTS LIST**  
**Pump Model 14D52-CH23 S/G**

If your pump serial number is followed by an "N", your pump is **NOT** a standard production model. Contact the Gorman-Rupp Company to verify part numbers.

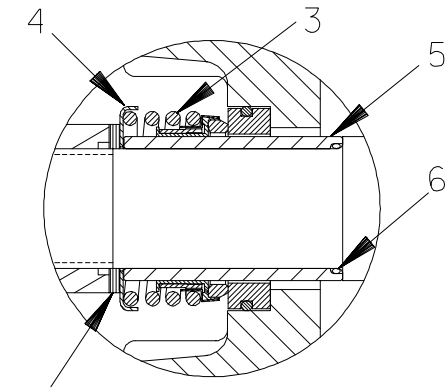
ITEM NO.	PART NAME	PART NUMBER	MAT'L CODE	QTY	ITEM NO.	PART NAME	PART NUMBER	MAT'L CODE	QTY
1	PUMP END ASSEMBLY	14D52-(CH23)		1	29	-FLANGED HEX NUT	21765-312	----	4
2	KOHLER CH23PS ENGINE	29127-303	----	1	30	HEX HD CAPSCREW	B0503	15991	4
3	ROLLOVER BASE	41583-345	24150	1	31	FLAT WASHER	K05	15991	4
4	HEX HD CAPSCREW	B0503	15991	1	32	LOCKWASHER	J05	15991	4
5	FLANGED HEX NUT	21765-312	----	1	33	FUEL TANK GUARD	34318-025	15120	1
6	BATTERY BOX COVER	11870	24000	1	34	START CABLE	47311-504	----	1
7	HEX HD CAPSCREW	B0504	15991	2	35	HEX HD CAPSCREW	B0503	15991	1
8	FLANGED HEX NUT	21765-312	----	2	36	FLANGED HEX NUT	21765-312	----	1
9 *	BATTERY	SEE OPTIONS		1	37	HEX HD CAPSCREW	B0606	15991	4
10	START CABLE SUB	47311-542	----	1	38	FLANGED HEX NUT	21765-314	----	4
11	HEX HD CAPSCREW	B0503	15991	1	39	T TYPE LOCK WASHER	BL06	15991	1
12	FLANGED HEX NUT	21765-312	----	1	40	HOSE	18513-052	----	1.25'
13	HEX HD CAPSCREW	B0503	15991	4	41	HOSE CLAMP	26518-641	----	2
14	LOCK WASHER	J05	15991	4	42	FUEL TANK	46711-089	19220	1
15	T TYPE LOCK WASHER	BL05	15991	1	43	MUFFLER KIT	29187-107	----	1
16	BATTERY BOX	34383-017	15120	1	44	MUFFLER GUARD KIT	29187-112	----	1
17	BATTERY TAG	38818-680	----	1					
18	STREET ELBOW	RS64	11990	1		NOT SHOWN:			
19	HEX HD CAPSCREW	B0807	15991	2		WARNING DECAL	2613FE	----	1
20	HEX NUT	D08	15991	2		HAND CARRY DECAL	2613FT	----	2
21	LOCK WASHER	J08	15991	2		PRIMING STICKER	6588AH	----	1
22	HEX HD CAPSCREW	B0504	15991	6		WHEEL KIT	GRP30-58	----	1
23	HEX NUT	D05	15991	6		INSTRUCTION TAG	38817-085	----	1
24	LOCK WASHER	J05	15991	6		ENGINE START UP TAG	38816-269	----	1
25 ‡	RUBBER FOOT MTG KIT	48152-603	----	1		G-R DECAL	GR-03	----	1
26	-RUBBER BUMPER	S1224	----	4					
27	-FLAT WASHER	K05	15991	4		OPTIONAL:			
28	-HEX HD CAPSCREW	B0504	15991	4		* 12V BATTERY	S1680	----	1

\* INDICATES PARTS RECOMMENDED FOR STOCK

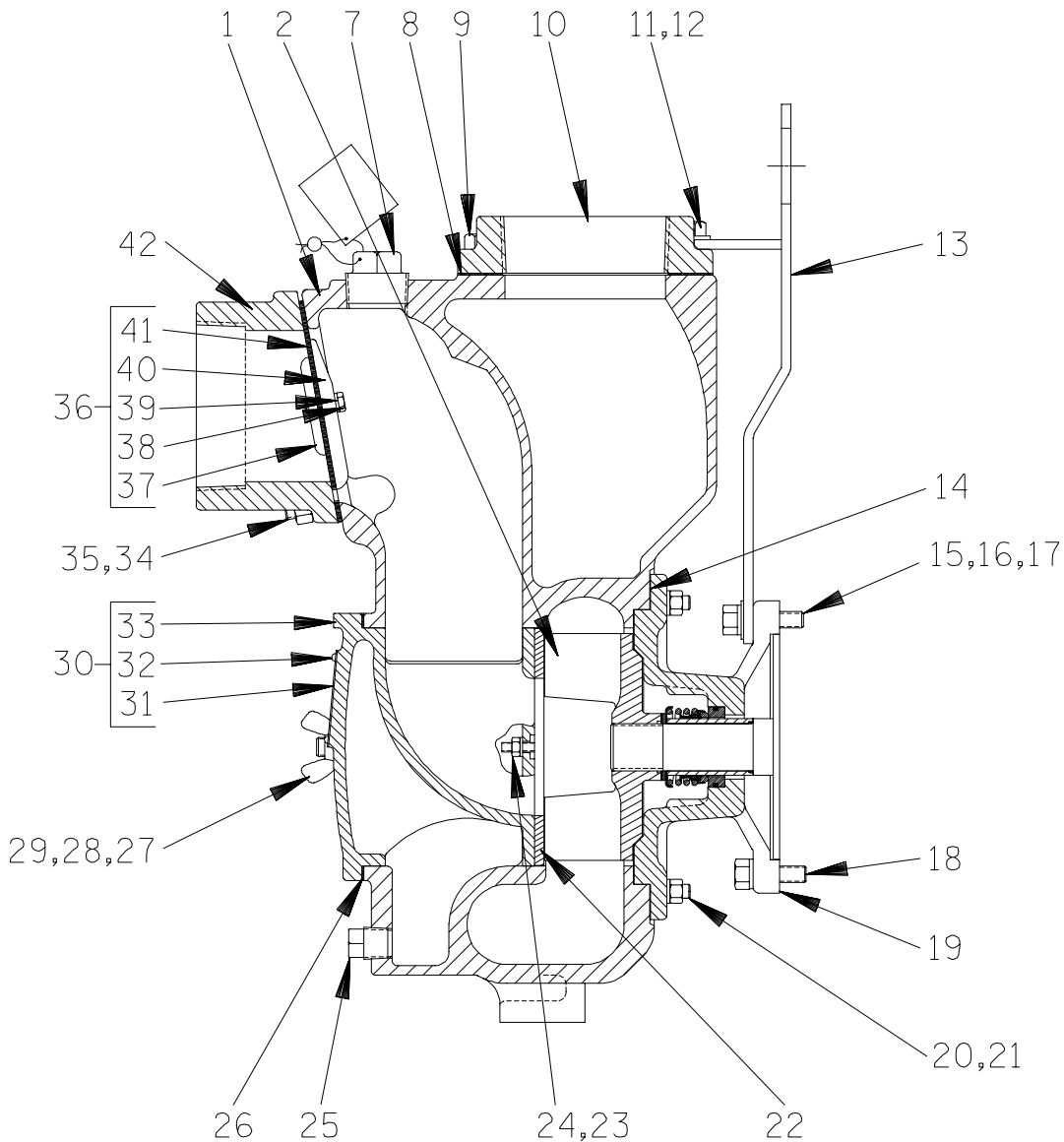
‡ ITEM SHIPPED LOOSE

**THE GORMAN-RUPP COMPANY • MANSFIELD, OHIO**

GORMAN-RUPP OF CANADA LIMITED • ST. THOMAS, ONTARIO, CANADA Printed in U.S.A.



43 SEAL AREA DETAIL



**THE GORMAN-RUPP COMPANY • MANSFIELD, OHIO**

GORMAN-RUPP OF CANADA LIMITED • ST. THOMAS, ONTARIO, CANADA

Printed in U.S.A.



**14D52-CH23 S/G**  
**14D52-(CH23)**

ACDEU

S/N 1246731 Up  
PUMP ISSUE 1

**PARTS LIST**  
**14D52-(CH23)**

ITEM NO.	PART NAME	PART NUMBER	MAT'L CODE	QTY	ITEM NO.	PART NAME	PART NUMBER	MAT'L CODE	QTY
1	PUMP CASING	38224-505	10010	1	26 *	COVER PLATE GSKT	38682-015	20000	1
2 *	IMPELLER	38615-096	11010	1	27	STUD	C0808	15991	2
3 *	SEAL ASSEMBLY	25285-856	----	1	28	FLAT WASHER	K08	15991	2
4	SPRING RETAINER	31161-042	17000	1	29	WING NUT	BB08	15991	2
5 *	SHAFT SLEEVE	11876A	16000	1	30	COVER PLATE ASSY	42111-997	----	1
6	SHAFT SLEEVE O-RING	25154-022	----	1	31	-WARNING PLATE	2613EV	13990	1
7	FILL PLUG ASSY	48271-065	----	1	32	-DRIVE SCREW	BM#04-03	17000	4
8 *	DISCH FLANGE GSKT	38687-009	20000	1	33	-BACK COVER PLATE	NOT AVAILABLE		1
9	HEX HD CAPSCREW	B1005	15991	2	34	STUD	C0808	15991	4
10	DISCHARGE FLANGE	38644-506	10010	1	35	HEX NUT	D08	15991	4
11	HEX HD CAPSCREW	B1007	15991	2	36	CHECK VALVE ASSY	46413-029	----	1
12	FLAT WASHER	21161-442	----	2	37 *	-VALVE WEIGHT	19	10010	1
13	HOISTING BAIL ASSY	44711-024	24150	1	38	-HEX HD CAPSCREW	B0403-1/2	17000	2
14 *	CASING GASKET SET	48211-022	----	1	39	-LOCKWASHER	J04	17000	2
15	HEX HD CAPSCREW	B0707	15991	2	40 *	-VALVE WEIGHT	4718	10010	1
16	LOCK WASHER	J07	15991	4	41 *	-CHECK VALVE	38671-626	19070	1
17	FLAT WASHER	K07	15991	2	42	SUCTION FLANGE	38645-506	10010	1
18	HEX HD CAPSCREW	B0706	15991	2	43	IMP ADJUST SHIM SET	37J	17090	1
19	INTERMEDIATE	38264-332	10010	1	NOT SHOWN:				
20	STUD	C0606	15991	8		NAME PLATE	38818-021	13990	1
21	HEX NUT	D06	15991	8		DRIVE SCREW	BM#04-03	17000	4
22	WEAR PLATE ASSY	46451-302	24150	1		STRAINER	2690	24000	1
23	LOCK WASHER	J04	15991	2		SUCTION STICKER	6588AG	----	1
24	HEX NUT	D04	15991	2		DISCHARGE STICKER	6588BJ	----	1
25	CASING DRAIN PLUG	P08	15079	1		PRIMING STICKER	6588AH	----	1

\* INDICATES PARTS RECOMMENDED FOR STOCK

**THE GORMAN-RUPP COMPANY • MANSFIELD, OHIO**

GORMAN-RUPP OF CANADA LIMITED • ST. THOMAS, ONTARIO, CANADA Printed in U.S.A.

**For U.S. and International Warranty Information,  
Please Visit [www.grpumps.com/warranty](http://www.grpumps.com/warranty)  
or call:  
U.S.: 419-755-1280  
International: +1-419-755-1352**

**For Canadian Warranty Information,  
Please Visit [www.grcanada.com/warranty](http://www.grcanada.com/warranty)  
or call:  
519-631-2870**