



**10 SERIES  
PUMP MODEL  
14D1-CH23 S/G**

**MANUAL  
PART 2 of 3**

**PARTS  
LIST  
WITH  
PERFORMANCE CURVE**

**THE GORMAN-RUPP COMPANY • MANSFIELD, OHIO**

GORMAN-RUPP OF CANADA LIMITED • ST. THOMAS, ONTARIO, CANADA Printed in U.S.A.

[www.grpumps.com](http://www.grpumps.com)

©2002 The Gorman-Rupp Company

Register your new  
Gorman-Rupp pump online at  
**www.grpumps.com**

Valid serial number and e-mail address required.



**The engine exhaust from this product contains chemicals known to the State of California to cause cancer, birth defects or other reproductive harm.**

### **RECORD YOUR PUMP MODEL AND SERIAL NUMBER**

Please record your pump model and serial number in the spaces provided below. Your Gorman-Rupp distributor needs this information when you require parts or service.

Pump Model: \_\_\_\_\_

Serial Number: \_\_\_\_\_

## PERFORMANCE CURVE – SECTION A

### RECORDING MODEL AND SERIAL NUMBERS

Please record the pump model and serial number in the spaces provided below and in the separate Installation/Operation Manual accompanying your pump. Your Gorman-Rupp distributor needs this information when you require parts or service.

Pump Model: \_\_\_\_\_

Serial Number: \_\_\_\_\_

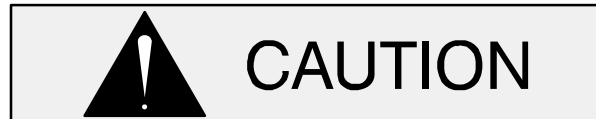
### WARRANTY INFORMATION

The pump warranty is provided as part of Gorman-Rupp's support program for customers who operate and maintain their equipment as described in this manual and other accompanying literature. Please note that should the equipment be abused or modified to change its performance beyond the original factory specifications, the warranty will become void and any claim will be denied.

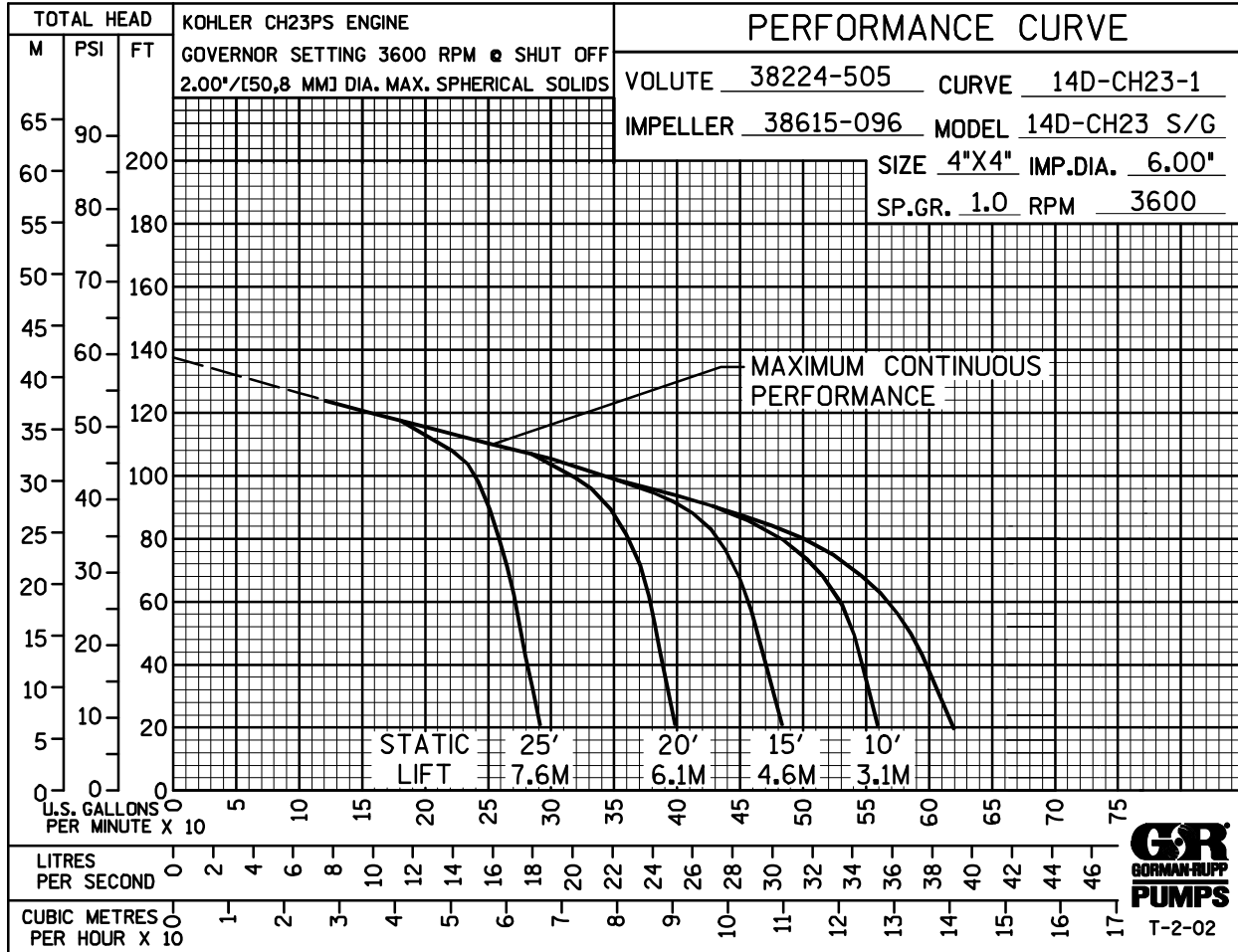
### PERFORMANCE CURVE

The performance curve on the following page is based on 70° F (21° C) clear water at sea level with minimum suction lift. Since pump installations are seldom identical, your performance may be different due to such factors as viscosity, specific gravity, elevation, temperature, and impeller trim.

If your pump serial number is followed by an "N", your pump is **NOT** a standard production model. Contact the Gorman-Rupp Company to verify performance or part numbers.

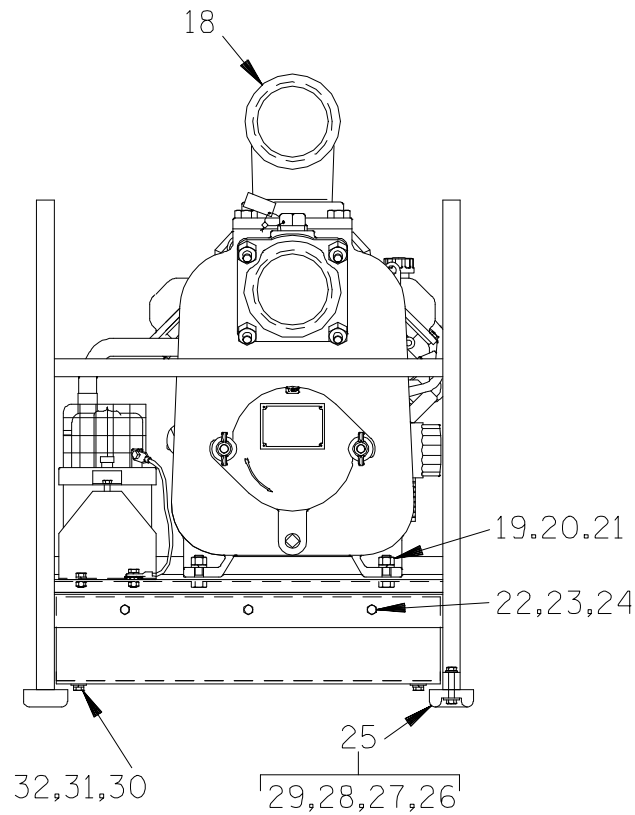
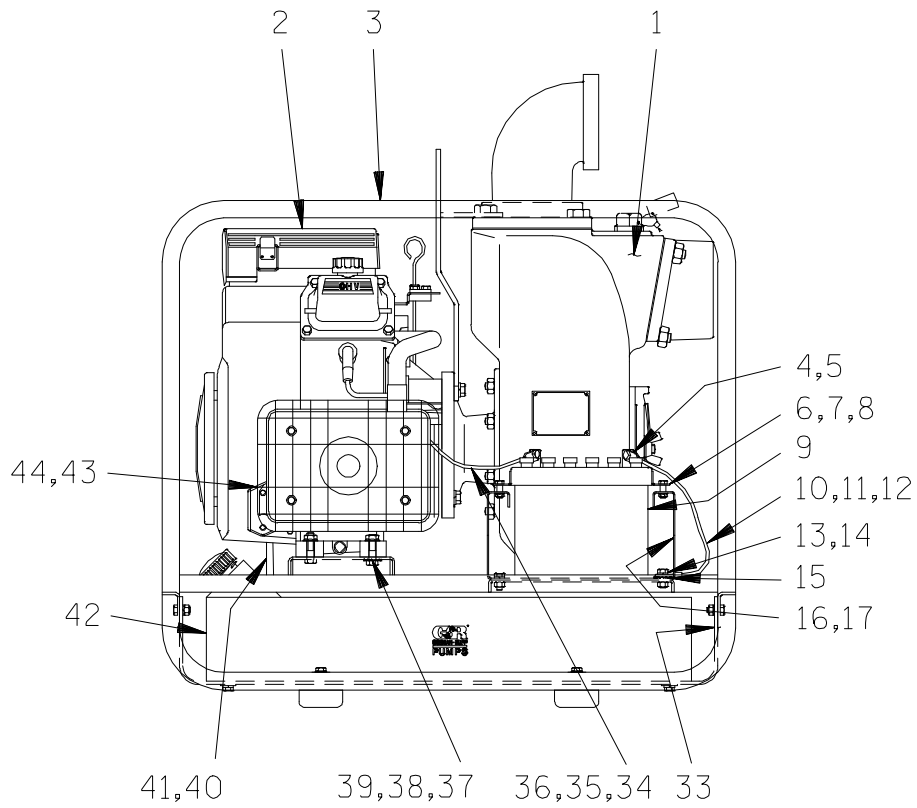


Pump speed and operating condition points must be within the continuous performance range shown on the curve.



**Performance Curve – Model 14D1-CH23 S/G**

**This Page Intentionally Blank**



**THE GORMAN-RUPP COMPANY • MANSFIELD, OHIO**

GORMAN-RUPP OF CANADA LIMITED • ST. THOMAS, ONTARIO, CANADA

Printed in U.S.A.

© Copyright by the Gorman-Rupp Company

**14D1—CH23 S/G**  
**14D1—(CH23)**

ACDEU

S/N 1246475 Up  
PUMP ISSUE 1

If your pump serial number is followed by an "N", your pump is **NOT** a standard production model. Contact the Gorman-Rupp Company to verify part numbers.

ITEM NO.	PART NAME	PART NUMBER	MAT'L CODE	QTY	ITEM NO.	PART NAME	PART NUMBER	MAT'L CODE	QTY
1	PUMP END ASSEMBLY	14D1—(CH23)		1	28	—HEX HD CAPSCREW	B0504	15991	4
2	KOHLER CH23PS ENGINE	29127—303	----	1	29	—FLANGED HEX NUT	21765—312	----	4
3	ROLLOVER BASE	41583—345	24150	1	30	HEX HD CAPSCREW	B0503	15991	4
4	HEX HD CAPSCREW	B0503	15991	1	31	FLAT WASHER	K05	15991	4
5	FLANGED HEX NUT	21765—312	----	1	32	LOCKWASHER	J05	15991	4
6	BATTERY BOX COVER	11870	24000	1	33	FUEL TANK GUARD	34318—025	15120	1
7	HEX HD CAPSCREW	B0504	15991	2	34	START CABLE	47311—504	----	1
8	FLANGED HEX NUT	21765—312	----	2	35	HEX HD CAPSCREW	B0503	15991	1
9 *	BATTERY	SEE OPTIONS		1	36	FLANGED HEX NUT	21765—312	----	1
10	START CABLE SUB	47311—542	----	1	37	HEX HD CAPSCREW	B0606	15991	4
11	HEX HD CAPSCREW	B0503	15991	1	38	FLANGED HEX NUT	21765—314	----	4
12	FLANGED HEX NUT	21765—312	----	1	39	T TYPE LOCK WASHER	BL06	15991	1
13	HEX HD CAPSCREW	B0503	15991	4	40	HOSE	18513—052	----	1.25'
14	LOCK WASHER	J05	15991	4	41	HOSE CLAMP	26518—641	----	2
15	T TYPE LOCK WASHER	BL05	15991	1	42	FUEL TANK	46711—089	19220	1
16	BATTERY BOX	34383—017	15120	1	43	MUFFLER KIT	29187—107	----	1
17	BATTERY TAG	38818—680	----	1	44	MUFFLER GUARD KIT	29187—112	----	1
18	STREET ELBOW	RS64	11990	1					
19	HEX HD CAPSCREW	B0807	15991	2		NOT SHOWN:			
20	HEX NUT	D08	15991	2		WARNING DECAL	2613FE	----	1
21	LOCK WASHER	J08	15991	2		HAND CARRY DECAL	2613FT	----	2
22	HEX HD CAPSCREW	B0504	15991	6		PRIMING STICKER	6588AH	----	1
23	HEX NUT	D05	15991	6					
24	LOCK WASHER	J05	15991	6		OPTIONAL:			
25 ‡	RUBBER FOOT MTG KIT	48152—603	----	1		* 12V BATTERY	S1680	----	1
26	—RUBBER BUMPER	S1224	----	4		WHEEL KIT	GRP30—58	----	1
27	—FLAT WASHER	K05	15991	4					

\* INDICATES PARTS RECOMMENDED FOR STOCK

‡ ITEM SHIPPED LOOSE

**THE GORMAN-RUPP COMPANY • MANSFIELD, OHIO**

GORMAN-RUPP OF CANADA LIMITED • ST. THOMAS, ONTARIO, CANADA

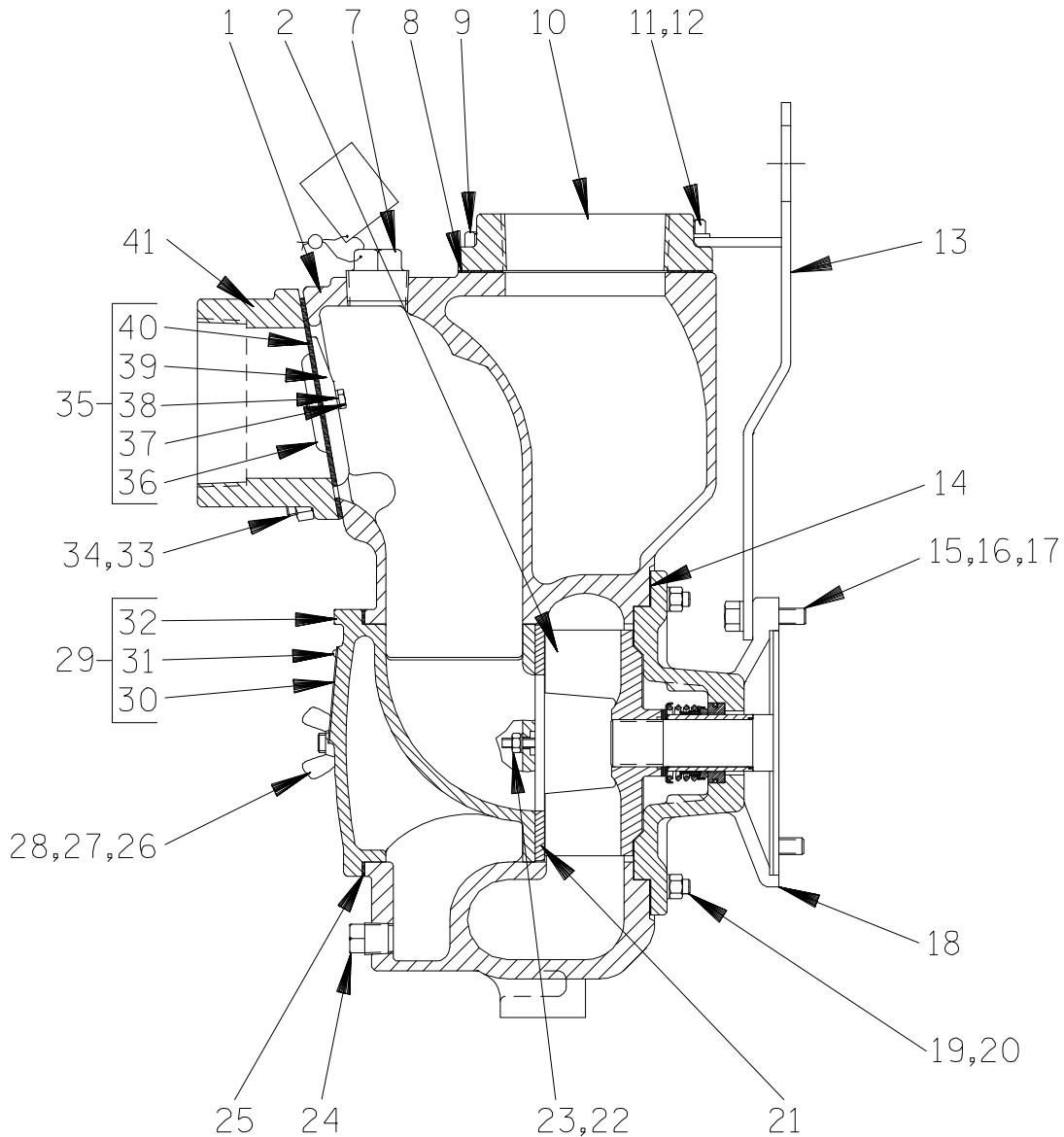
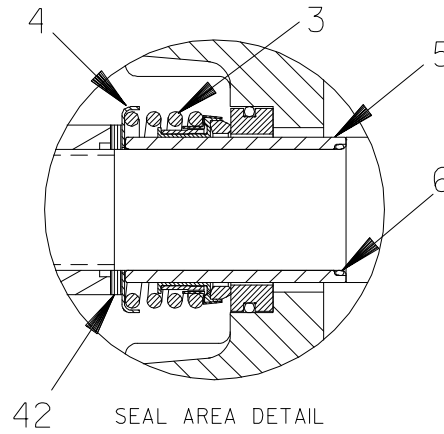
Printed in U.S.A.

June 25, 2002

© Copyright by the Gorman-Rupp Company

2 of 4

Page 10.4 D6.4



**THE GORMAN-RUPP COMPANY • MANSFIELD, OHIO**

GORMAN-RUPP OF CANADA LIMITED • ST. THOMAS, ONTARIO, CANADA

Printed in U.S.A.

© Copyright by the Gorman-Rupp Company



**14D1—CH23 S/G**  
**14D1—(CH23)**

ACDEU

S/N 1246475 Up  
PUMP ISSUE 1

**PARTS LIST**  
**14D1—(CH23)**

ITEM NO.	PART NAME	PART NUMBER	MAT'L CODE	QTY	ITEM NO.	PART NAME	PART NUMBER	MAT'L CODE	QTY
1	PUMP CASING	38224-505	13040	1	26	STUD	C0808	15991	2
2 *	IMPELLER	38615-096	11010	1	27	FLAT WASHER	K08	15991	2
3 *	SEAL ASSEMBLY	25285-856	----	1	28	WING NUT	BB08	15991	2
4	SPRING RETAINER	31161-042	17000	1	29	COVER PLATE ASSY	42111-937	----	1
5 *	SHAFT SLEEVE	11876A	16000	1	30	-WARNING PLATE	2613EV	13990	1
6	SHAFT SLEEVE O-RING	25154-022	----	1	31	-DRIVE SCREW	BM#04-03	17000	4
7	FILL PLUG ASSY	48271-065	----	1	32	-BACK COVER PLATE	NOT AVAILABLE		1
8 *	DISCH FLANGE GSKT	38687-009	20000	1	33	STUD	C0808	15991	4
9	HEX HD CAPSCREW	B1005	15991	2	34	HEX NUT	D08	15991	4
10	DISCHARGE FLANGE	38644-506	13000	1	35	CHECK VALVE ASSY	46413-029	----	1
11	HEX HD CAPSCREW	B1007	15991	2	36 *	-VALVE WEIGHT	19	10010	1
12	FLAT WASHER	21161-442	----	2	37	-HEX HD CAPSCREW	B0403-1/2	17000	2
13	HOISTING BAIL ASSY	44711-024	24150	1	38	-LOCKWASHER	J04	17000	2
14 *	CASING GASKET SET	48211-022	----	1	39 *	-VALVE WEIGHT	4718	10010	1
15	HEX HD CAPSCREW	B0706	15991	4	40 *	-CHECK VALVE	38671-626	19070	1
16	LOCK WASHER	J07	15991	4	41	SUCTION FLANGE	38645-506	13000	1
17	HEX NUT	D07	15991	4	42	IMP ADJUST SHIM SET	37J	17090	1
18	INTERMEDIATE	38264-332	13000	1	NOT SHOWN:				
19	STUD	C0606	15991	8		NAME PLATE	38818-021	13990	1
20	HEX NUT	D06	15991	8		DRIVE SCREW	BM#04-03	17000	4
21	WEAR PLATE ASSY	46451-302	24150	1		STRAINER	2690	24000	1
22	LOCK WASHER	J04	15991	2		SUCTION STICKER	6588AG	----	1
23	HEX NUT	D04	15991	2		DISCHARGE STICKER	6588BJ	----	1
24	CASING DRAIN PLUG	P08	15079	1		PRIMING STICKER	6588AH	----	1
25 *	COVER PLATE GSKT	38682-015	20000	1					

\* INDICATES PARTS RECOMMENDED FOR STOCK

**THE GORMAN-RUPP COMPANY • MANSFIELD, OHIO**

GORMAN-RUPP OF CANADA LIMITED • ST. THOMAS, ONTARIO, CANADA

Printed in U.S.A.

June 25, 2002

©Copyright by the Gorman-Rupp Company

4 of 4

Page 10.4 D6.4

**For U.S. and International Warranty Information,  
Please Visit [www.grpumps.com/warranty](http://www.grpumps.com/warranty)  
or call:  
U.S.: 419-755-1280  
International: +1-419-755-1352**

**For Canadian Warranty Information,  
Please Visit [www.grcanada.com/warranty](http://www.grcanada.com/warranty)  
or call:  
519-631-2870**