



PRIME-AIRE[™] **SERIES**
PUMP MODEL
PA6C60-4045T

MANUAL
PART 2 of 3

PARTS
LIST
WITH
PERFORMANCE CURVE

THE GORMAN-RUPP COMPANY • MANSFIELD, OHIO

GORMAN-RUPP OF CANADA LIMITED • ST. THOMAS, ONTARIO, CANADA Printed in U.S.A.

©Copyright by the Gorman-Rupp Company



The engine exhaust from this product contains chemicals known to the State of California to cause cancer, birth defects or other reproductive harm.

PERFORMANCE CURVE – SECTION A

RECORDING MODEL AND SERIAL NUMBERS

Please record the pump model and serial number in the spaces provided below and in the separate Installation/Operation Manual accompanying your pump. Your Gorman-Rupp distributor needs this information when you require parts or service.

Pump Model: _____

Serial Number: _____

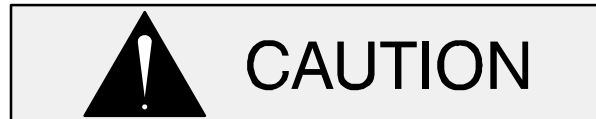
WARRANTY INFORMATION

The pump warranty is provided as part of Gorman-Rupp's support program for customers who operate and maintain their equipment as described in this manual and other accompanying literature. Please note that should the equipment be abused or modified to change its performance beyond the original factory specifications, the warranty will become void and any claim will be denied.

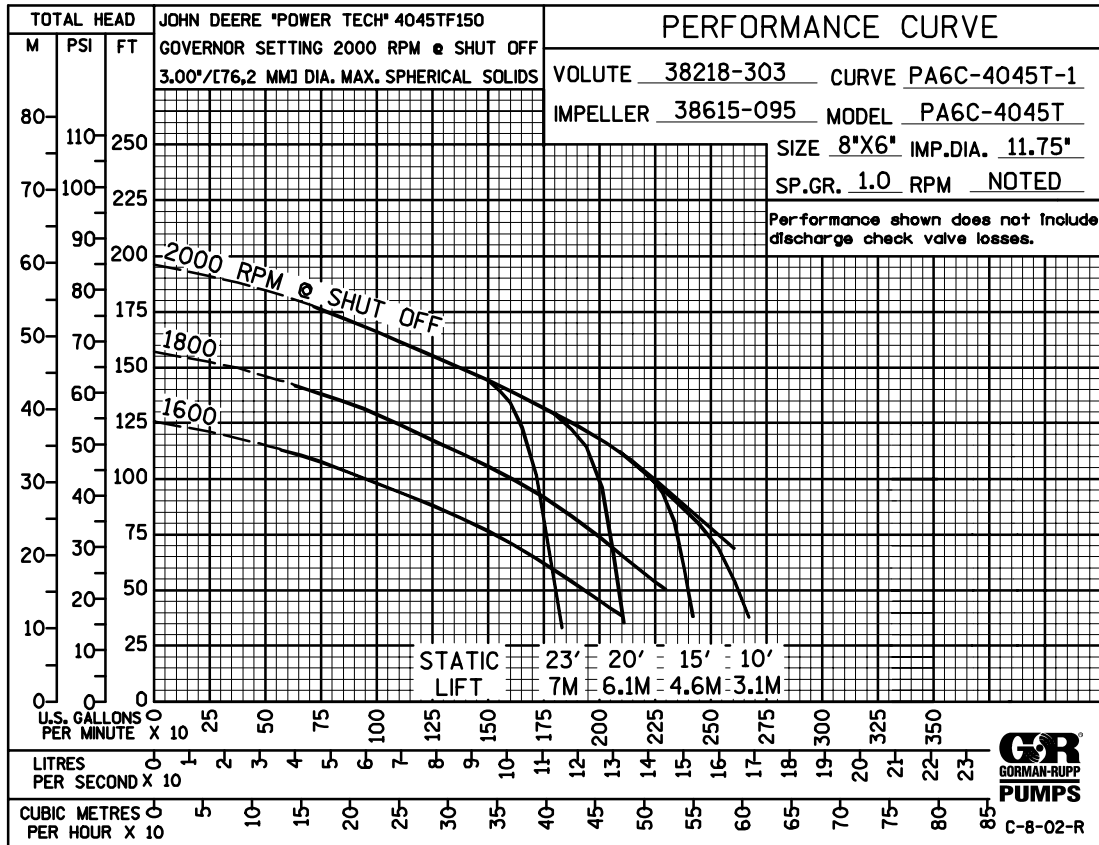
PERFORMANCE CURVE

The performance curve on the following page is based on 70° F (21° C) clear water at sea level, with minimum suction lift. Since pump installations are seldom identical, your performance may be different due to such factors as viscosity, specific gravity, elevation, temperature, and impeller trim.

If your pump serial number is followed by an "N", your pump is **NOT** a standard production model. Contact the Gorman-Rupp Company to verify performance or part numbers.

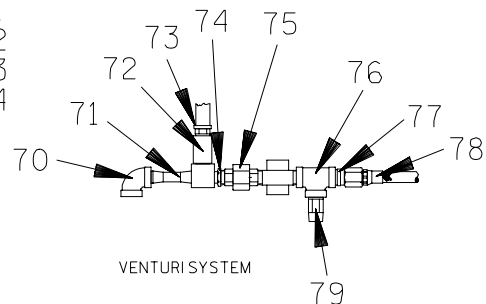
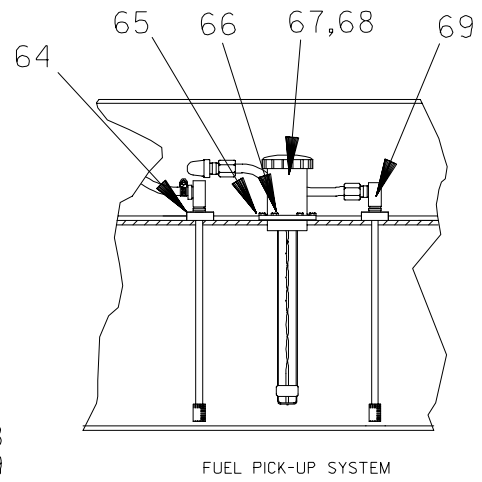
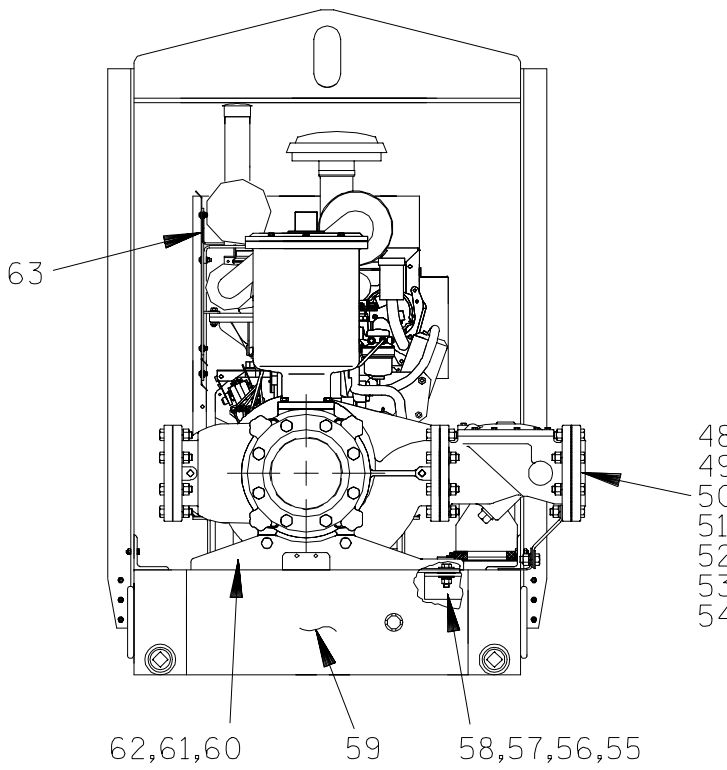
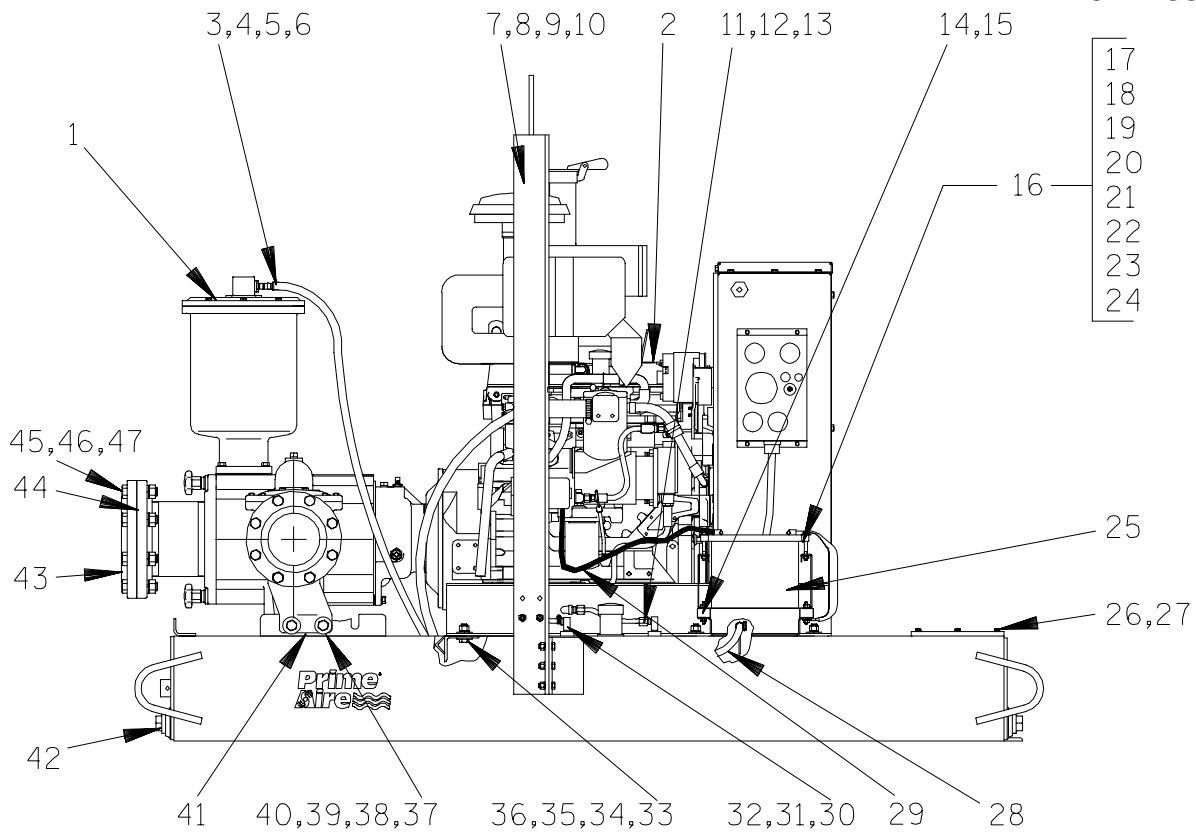


Pump speed and operating condition points must be within the continuous performance range shown on the curve.



Performance Curve – Model PA6C60-4045T

This Page Intentionally Blank



THE GORMAN-RUPP COMPANY • MANSFIELD, OHIO

GORMAN-RUPP OF CANADA LIMITED • ST. THOMAS, ONTARIO, CANADA

Printed in U.S.A.

S/N 1254714 Up
PUMP ISSUE 1

PARTS LIST
Pump Model PA6C60-4045T

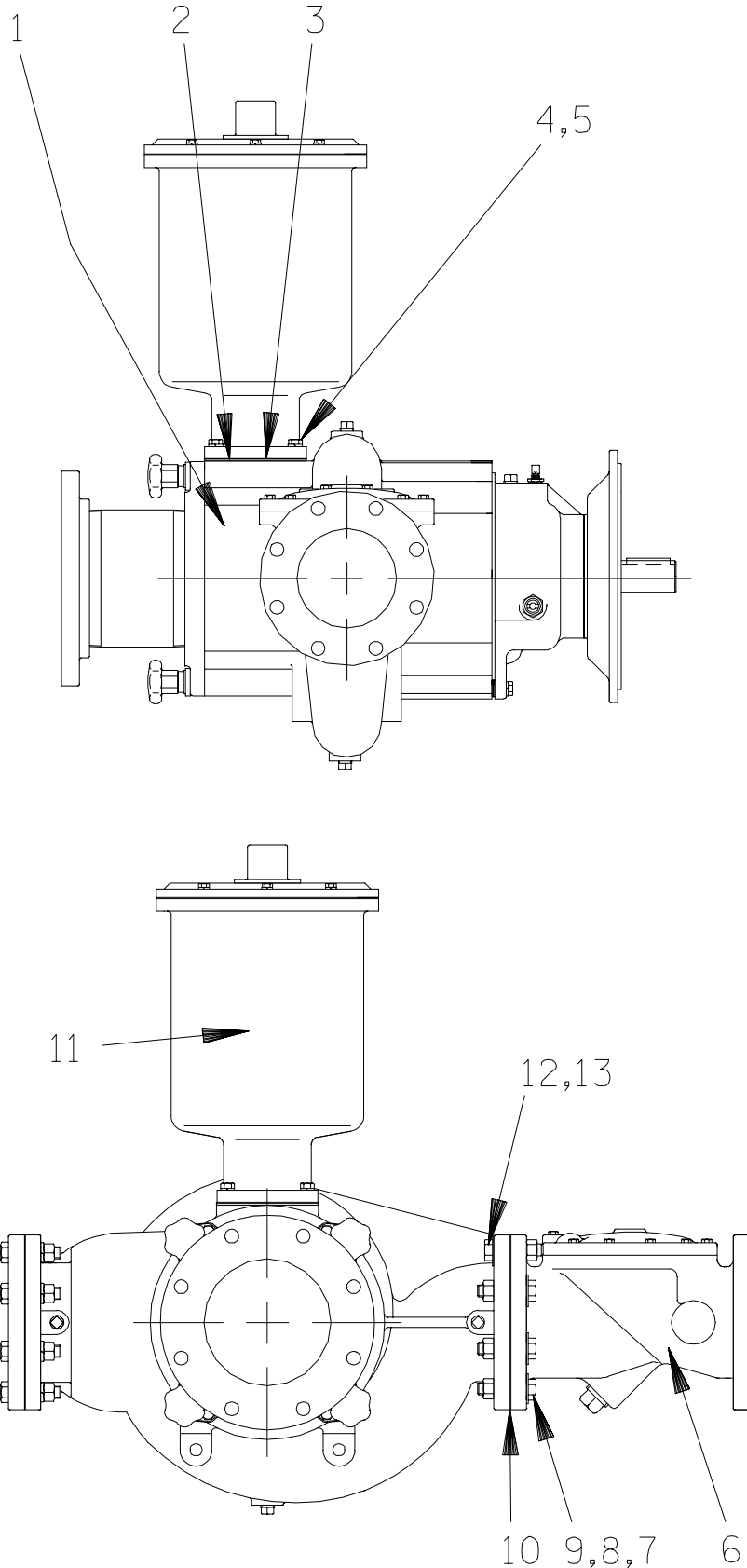
If your pump serial number is followed by an "N", your pump is **NOT** a standard production model. Contact the Gorman-Rupp Company to verify part numbers.

ITEM NO.	PART NAME	PART NUMBER	MAT'L CODE	QTY	ITEM NO.	PART NAME	PART NUMBER	MAT'L CODE	QTY
1	PUMP ASSEMBLY	PA6C60-(4045T)		1	51	HEX HD CAPSCREW	B1213	15991	4
2	JOHN DEERE 4045TF150	29224-119	----	1	52	HEX HD CAPSCREW	B1214	15991	2
3	REDUCER BUSHING	AP1608	11999	1	53	LOCKWASHER	J12	15991	6
4	CONNECTOR	S1598	----	1	54	HEX NUT	D12	15991	8
5	HOSE BARB FTG	26523-047	----	1	55	HEX HD CAPSCREW	B1009	15991	2
6	4' HOSE	18513-113	----	1	56	FLAT WASHER	KB10	17000	4
7	LIFTING BAIL	44713-031	24150	1	57	LOCKWASHER	J10	15991	2
8	HEX HD CAPSCREW	B0805	15991	10	58	HEX NUT	D10	15991	2
9	LOCKWASHER	J08	15991	10	59	BASE/FUEL TANK	41553-001	24150	1
10	HEX NUT	D08	15991	10	60	PUMP BRACKET	34268-007	15080	1
11	MALE ELBOW	26351-131	----	1	61	HEX HD CAPSCREW	B1206	15991	2
12	CONNECTOR	S1447	----	2	62	LOCKWASHER	J12	15991	2
13	HOSE ASSEMBLY	46341-789	----	1	63	MUFFLER GUARD ASSY	42331-061	----	1
14	STUD MOUNT	24631-006	----	4	64	FUEL PICKUP	29332-145	----	1
15	HEX NUT	21765-314	----	8	65	GASKET	38683-270	19060	1
16	BATTERY BOX ASSY	GRP40-02E	----	1	66	HEX HD MACH SCREW	B#10-02S	15991	6
17	-HEX HD CAPSCREW	B0612	15991	2	67	FUEL GAGE	29332-135	----	1
18	-FLANGE HEX NUT	21765-314	----	2	68	FILL NECK ASSY	46312-017	24152	1
19	-FLAT WASHER	KE06	15991	2	69	FUEL PICKUP	29332-145	----	1
20	-BATTERY TAG	38818-515	----	1	70	PIPE ELBOW	AG08	11999	1
21	-GRD CABLE ASSY	47311-064	----	1	71	VENTURI	26817-002	----	1
22	-BATTERY FRAME	8355B	24000	1	72	PIPE COUPLING 1/2	AE08	15079	1
23	-BATTERY BOX	34751-006	15120	1	73	MALE CONNECTOR	26525-020	----	1
24	-T TYPE LOCKWASHER	BL06	15991	1	74	RED PIPE BUSH	AP0806	15079	1
25	BATTERY	SEE OPTIONAL		REF	75	PIPE UNION	AH08	11999	1
26	HEX HD CAPSCREW	B0602	15991	3	76	TEE 1/2	U08	11999	1
27	LOCKWASHER	J06	15991	3	77	MALE ADAPTOR	26351-065	----	2
28	OIL DRAIN ASSY	46342-013	----	1	78	HOSE ASSY	46341-426	----	1
29	CABLE ASSEMBLY	47311-109	----	1	79	RELIEF VALVE	26662-028	----	1
30	HOSE BARB FITTING	26523-386	----	2		NOT SHOWN:			
31	HOSE	11308G	----	1		INSTRUCTION DECAL	38818-128	----	1
32	HOSE CLAMP	26518-641	----	2		LUBE DECAL	38816-079	----	1
33	HEX HD CAPSCREW	B1007	15991	6		SUCTION STICKER	6588AG	----	1
34	HEX NUT	D10	15991	6		DISCHARGE STICKER	6588BJ	----	1
35	LOCKWASHER	J10	15991	6		RPM DECAL	2613FJ	----	1
36	FLAT WASHER	K10	15991	12		LIFT DECAL	38816-218	----	2
37	HEX HD CAPSCREW	B1205	15991	2		PA DECAL	38812-078	----	2
38	LOCKWASHER	J12	15991	2		WARNING DECAL	2613FE	----	2
39	FLAT WASHER	KB12	17000	6		G-R DECAL	GR06	----	4
40	HEX NUT	D12	15991	2		INSTR TAG PAPER	38817-009	----	1
41	CHECK VALVE BRKT	34742-014	15080	1		ENG START-UP TAG	38816-269	----	1
42	PIPE PLUG	P32	10009	4		NAME PLATE	38818-127	13000	1
43	FLANGE	1759	10010	1		DRIVE SCREW	BM#04-03	17000	4
44	FLANGE GASKET	25113-038	----	1		8" STRAINER	46641-010	24150	1
45	HEX HD CAPSCREW	B1414	15991	8		WARNING DECAL	38816-330	----	2
46	LOCKWASHER	J14	15991	8					
47	HEX NUT	D14	15991	8		OPTIONAL:			
48	FLANGE	1758	10010	1		WHEEL KIT	GRP30-255	----	1
49	FLANGE GASKET	25113-036	----	1		BATTERY	29331-515	----	1
50	HEX HD CAPSCREW	B1212	15991	2					

* INDICATES PARTS RECOMMENDED FOR STOCK

THE GORMAN-RUPP COMPANY • MANSFIELD, OHIO

GORMAN-RUPP OF CANADA LIMITED • ST. THOMAS, ONTARIO, CANADA Printed in U.S.A.



THE GORMAN-RUPP COMPANY • MANSFIELD, OHIO

GORMAN-RUPP OF CANADA LIMITED • ST. THOMAS, ONTARIO, CANADA

Printed in U.S.A.

S/N 1254714 Up
PUMP ISSUE 1

PARTS LIST
PA6C60-(4045T) Pump Assembly

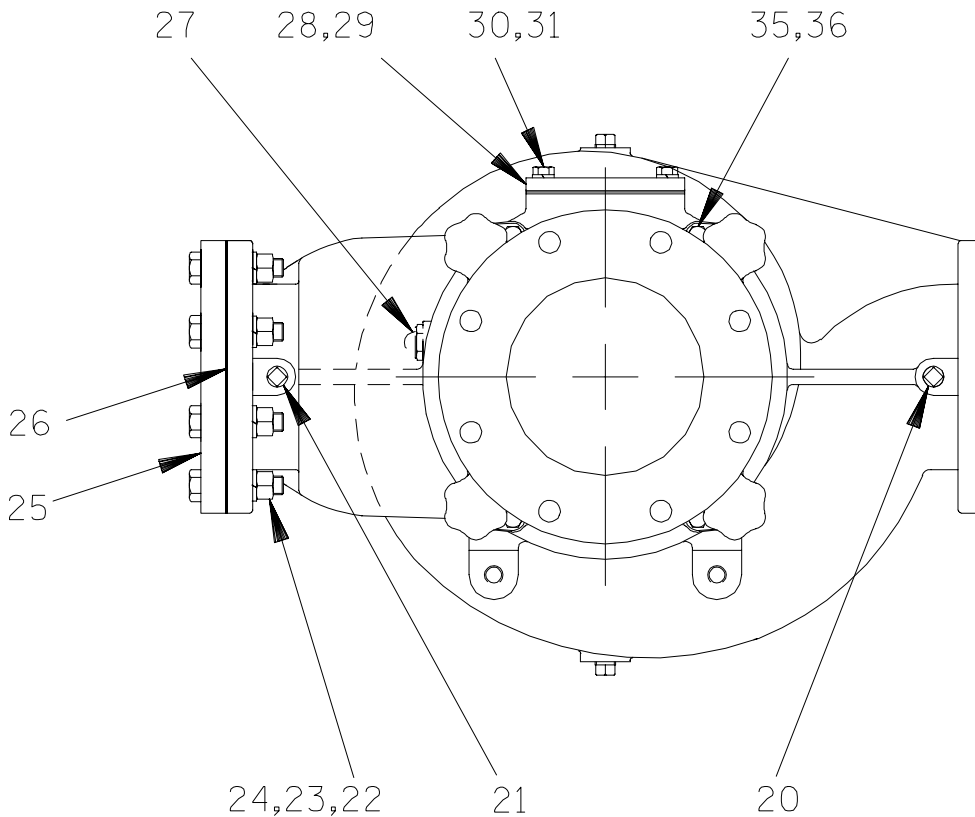
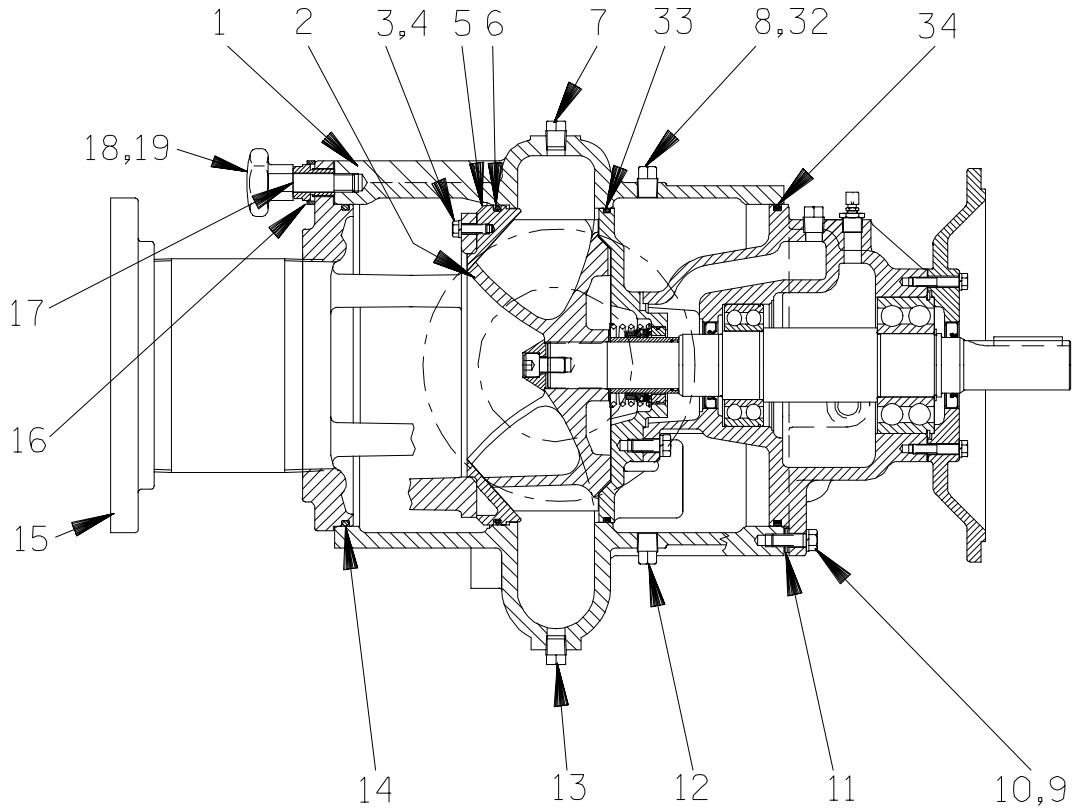
ITEM NO.	PART NAME	PART NUMBER	MAT'L CODE	QTY
1	PUMP END ASSY	66F60-(4045T)	---	1
2	BAFFLE	31113-011	17000	1
3	* PRIMING CHAMBER GSKT	38687-053	19060	1
4	HEX HD CAPSCREW	B0806	15991	4
5	LOCKWASHER	J08	15991	4
6	CHECK VALVE ASSY	26642-126	---	1
	-FLAPPER	26688-001	---	1
	-COVER GASKET	26688-002	---	1
7	HEX HD CAPSCREW	B1213	15991	6
8	LOCKWASHER	J12	15991	6
9	HEX NUT	D12	15991	6
10	* CASING GASKET	25113-036	---	1
11	PRIMING CHAMBER ASSY	46112-704	---	1
12	HEX HD CAPSCREW	B1212	15991	2
13	HEX NUT	D12	15991	2

* INDICATES PARTS RECOMMENDED FOR STOCK

THE GORMAN-RUPP COMPANY • MANSFIELD, OHIO

GORMAN-RUPP OF CANADA LIMITED • ST. THOMAS, ONTARIO, CANADA

Printed in U.S.A.



THE GORMAN-RUPP COMPANY • MANSFIELD, OHIO

GORMAN-RUPP OF CANADA LIMITED • ST. THOMAS, ONTARIO, CANADA

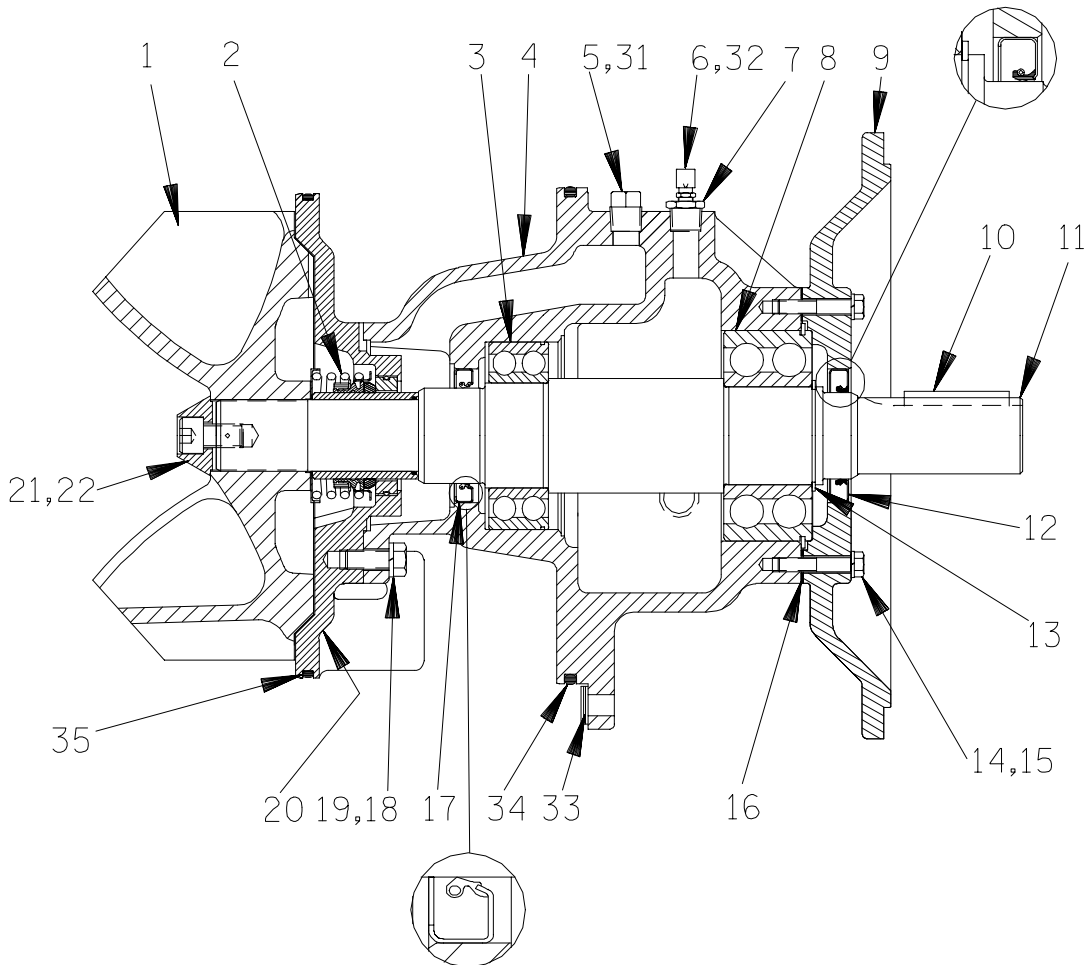
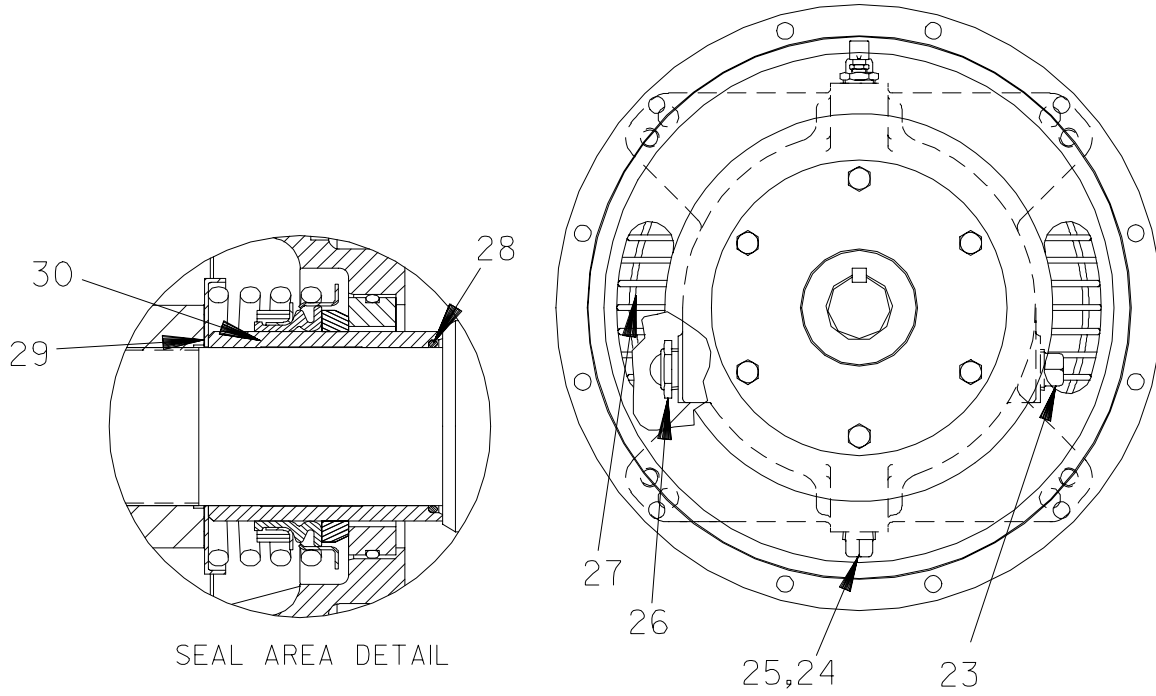
Printed in U.S.A.

S/N 1254714 Up
PUMP ISSUE 1

PARTS LIST
66F60-(4045T) Pump End Assembly

ITEM NO.	PART NAME	PART NUMBER	MAT'L CODE	QTY	ITEM NO.	PART NAME	PART NUMBER	MAT'L CODE	QTY
1	PUMP CASING	38218-303	11010	1	25	BLIND FLANGE ASSY	42111-349	---	1
2	REPAIR ROTATING ASSY	44163-321	---	1	26 *	FLANGE GASKET	25113-036	---	1
3	HEX HD CAPSCREW	B0604 1/2	17000	4	27	SIGHT GAUGE	S1471	---	1
4	LOCKWASHER	J06	17090	4	28	COVER PLATE	33541-045	15080	1
5 *	WEAR RING	38691-864	11010	1	29 *	CVR PLATE GASKET	38687-053	19060	1
6 *	WEAR RING O-RING	25152-453	---	1	30	HEX HD CAPSCREW	B0805	15991	4
7	PIPE PLUG	P08	15079	1	31	LOCKWASHER	J08	15991	4
8	VENTED PLUG	4823A	15079	1	32	SHIPPING PLUG	11495B	15079	1
9	HEX HD CAPSCREW	B0806	15991	4	33 *	SEAL PLATE O-RING	25152-381	---	1
10	LOCKWASHER	J08	15991	4	34 *	BEARING HSG O-RING	S1676	---	1
11 *	ADJ SHIM SET	13131-3	17040	12	35	HEX HD CAPSCREW	B0804 1/2	15991	4
12	CASING DRAIN PLUG	P08	15079	1	36	LOCKWASHER	J08	15991	4
13	CASING DRAIN PLUG	P08	15079	1		NOT SHOWN:			
14 *	BACK CVR PLATE O-RING	S1676	---	1		DRIVE ASSY	44162-159	---	1
15	BACK CVR PLATE ASSY	42111-812	---	1		PIPE PLUG	P12	15079	1
16	LOCKING COLLAR	38115-551	15001	4		OIL LEVEL DECAL	38816-123	---	1
17 *	ADJ SCREW	31871-070	1500X	4		ALTERNATE PARTS:			
18	STUD	C1213	15991	4		PA SERIES NAME PLATE	38818-127	13000	1
19	HAND KNOB	38115-901	10000	4		DRIVE SCREW	BM#04-03	17000	4
20	PIPE PLUG	P08	15079	1		60 SERIES NAME PLATE	2613R	13990	1
21	PIPE PLUG	P08	15079	1		DRIVE SCREW	BM#04-03	17000	2
22	HEX HD CAPSCREW	B1213	15991	8					
23	LOCKWASHER	J12	15991	8					
24	HEX NUT	D12	15991	8					

* INDICATES PARTS RECOMMENDED FOR STOCK



THE GORMAN-RUPP COMPANY • MANSFIELD, OHIO

GORMAN-RUPP OF CANADA LIMITED • ST. THOMAS, ONTARIO, CANADA

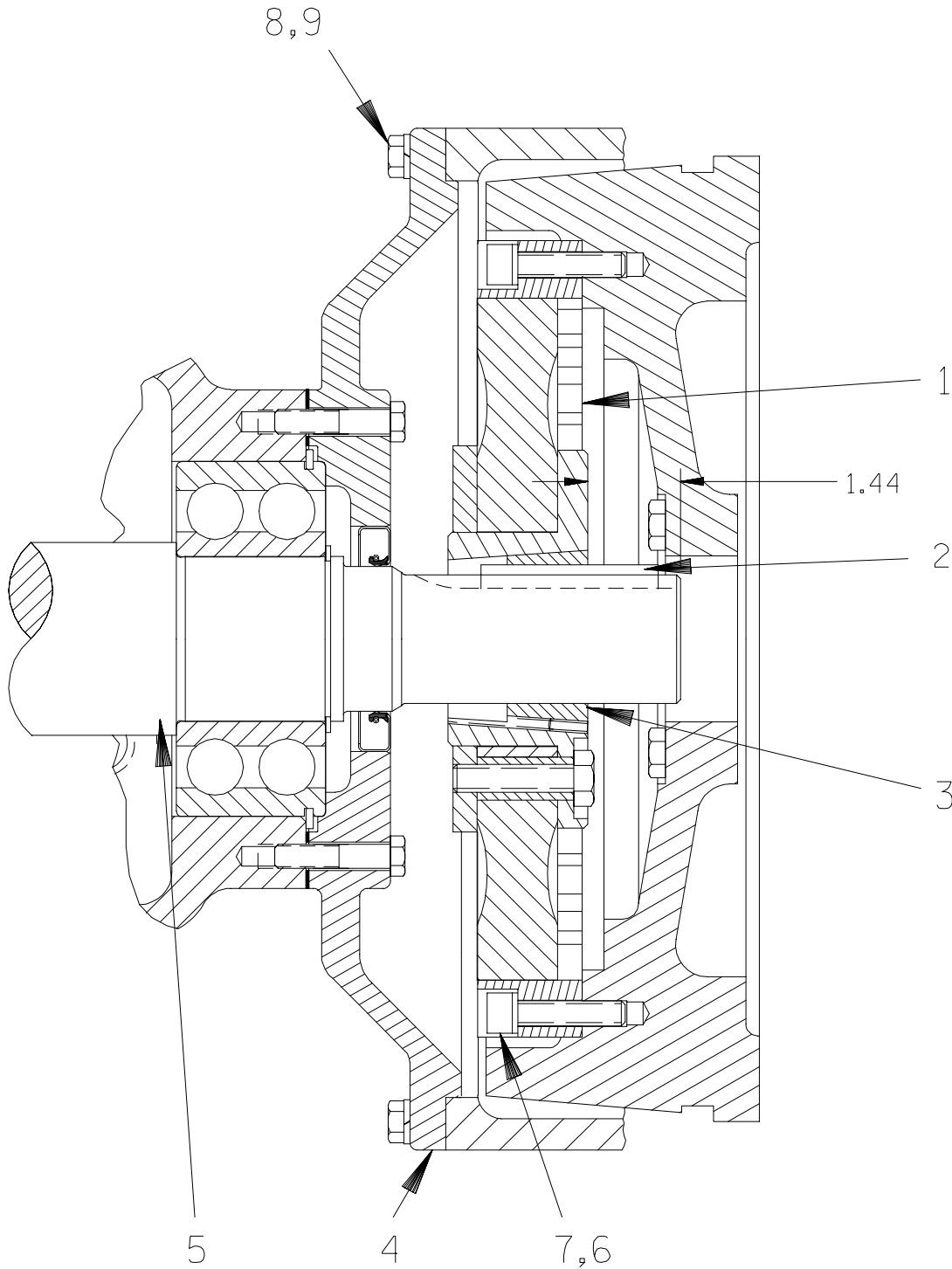
Printed in U.S.A.

S/N 1254714 Up
PUMP ISSUE 1

PARTS LIST
44163-321 Repair Rotating Assembly

ITEM NO.	PART NAME	PART NUMBER	MAT'L CODE	QTY	ITEM NO.	PART NAME	PART NUMBER	MAT'L CODE	QTY
1 *	IMPELLER	38615-095	11010	1	20	SEAL PLATE	38272-256	10000	1
2 *	SEAL ASSY	46512-149	----	1	21	SOCKET HD CAPSCREW	DM1004S	17090	1
3 *	INBOARD BALL BEARING	23422-019	----	1	22	IMPELLER WASHER	31514-015	17000	1
4	BEARING HOUSING	38251-513	10000	1	23	PIPE PLUG	P12	15079	1
5	VENTED PLUG	4823A	15079	1	24	PIPE PLUG	P08	15079	1
6	AIR VENT	S1530	----	1	25	BRG CVTY DRAIN PLUG	P08	15079	1
7	RED PIPE BUSHING	AP0802	15079	1	26	SIGHT GAUGE	S1471	----	1
8 *	OUTBOARD BALL BRG	23422-414	----	1	27	INTERMEDIATE GUARD	42381-509	24152	2
9	DRIVE FLANGE	38545-004	10000	1	28 *	SHAFT SLEEVE O-RING	25154-131	----	1
10 *	IMP SHAFT KEY	SUPPLIED W/DRIVE ASSY			29 *	IMPELLER ADJ SHIM SET	48261-057	----	1
11 *	IMPELLER SHAFT	38515-586	1706H	1	30 *	SHAFT SLEEVE	31163-019	1706H	1
12 *	OIL SEAL	S1907	----	1	31	SHIP PLUG	11495B	15079	1
13	SNAP RING	S720	----	1	32	SHIP PLUG	11495B	15079	1
14	HEX HD CAPSCREW	B0608	15991	6	33	ADJ SHIM SET	13131-3	17040	12
15	LOCKWASHER	J06	15991	6	34 *	BRG HOUSING O-RING	S1676	----	1
16 *	BRG HOUSING GSKT	38683-474	18000	1	35 *	SEAL PLATE O-RING	25152-381	----	1
17 *	OIL SEAL	25227-771	----	1					
18	HEX HD CAPSCREW	B0805	15991	4	NOT SHOWN:				
19	LOCKWASHER	J08	15991	4	INSTRUCTION TAG	6588U	----	1	

* INDICATES PARTS RECOMMENDED FOR STOCK



THE GORMAN-RUPP COMPANY • MANSFIELD, OHIO

GORMAN-RUPP OF CANADA LIMITED • ST. THOMAS, ONTARIO, CANADA

Printed in U.S.A.

S/N 1254714 Up
PUMP ISSUE 1

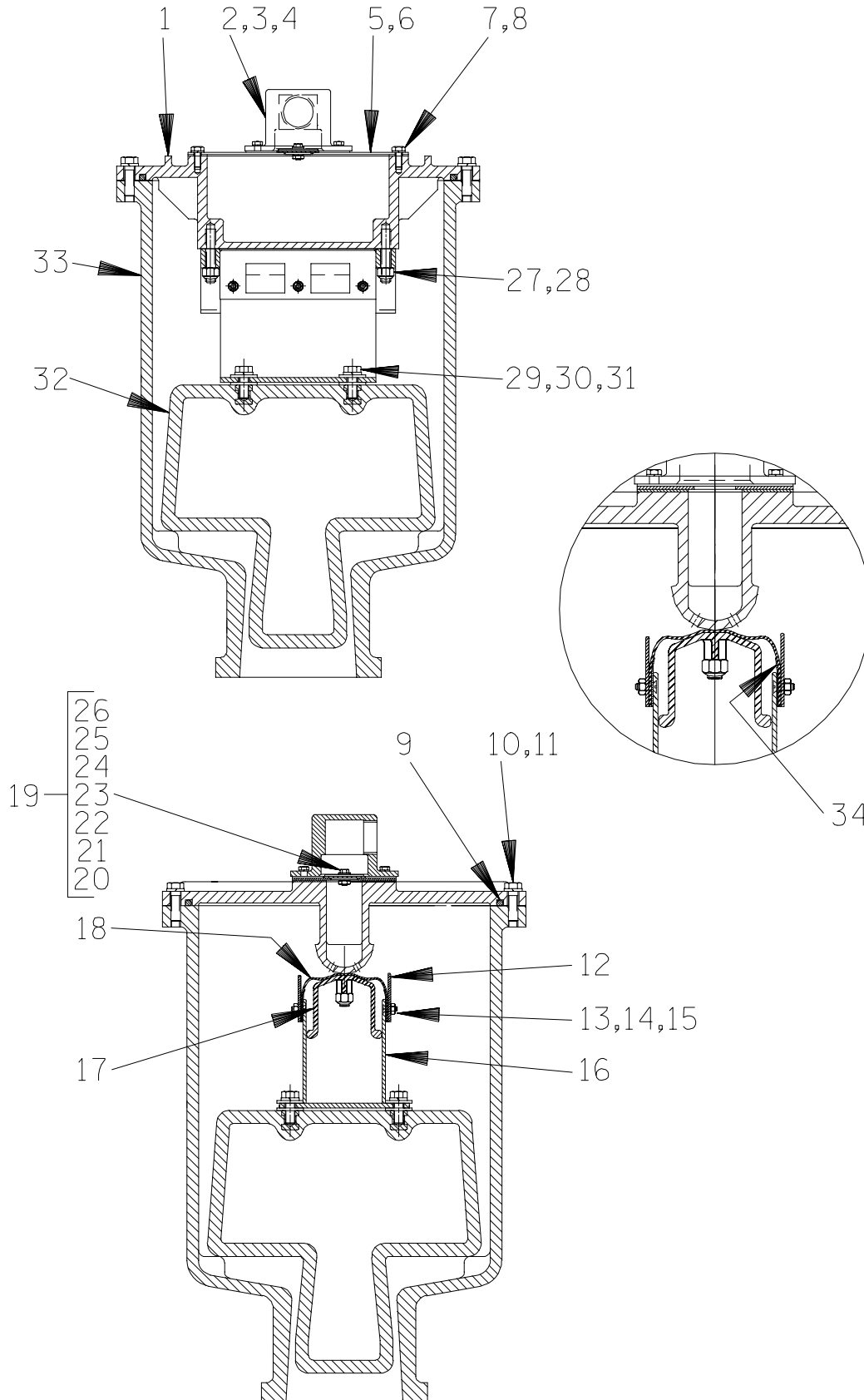
PARTS LIST
Drive Assembly

ITEM NO.	PART NAME	PART NUMBER	MAT'L CODE	QTY
1	COUPLING ASSY	44165-016	---	1
2	KEY	SUPPLIED W/BUSHING		1
3	BUSHING	24131-498	---	1
4	DRIVE FLANGE	38545-004	10000	1
5	IMPELLER SHAFT	38515-586	1706H	1
6	LOCKWASHER	21171-536	---	8
7	SOCKET HD CAPSCREW	BD0606 1/2	15991	8
8	HEX HD CAPSCREW	B0605	15991	12
9	LOCKWASHER	J06	15991	12

THE GORMAN-RUPP COMPANY • MANSFIELD, OHIO

GORMAN-RUPP OF CANADA LIMITED • ST. THOMAS, ONTARIO, CANADA

Printed in U.S.A.



THE GORMAN-RUPP COMPANY • MANSFIELD, OHIO

GORMAN-RUPP OF CANADA LIMITED • ST. THOMAS, ONTARIO, CANADA

Printed in U.S.A.

S/N 1254714 Up
PUMP ISSUE 1

PARTS LIST
46112-704 Priming Chamber Assembly

ITEM NO.	PART NAME	PART NUMBER	MAT'L CODE	QTY	ITEM NO.	PART NAME	PART NUMBER	MAT'L CODE	QTY
1	PRIMING CHAMBER LID	38346-615	1300U	1	18	VALVE STRAP	33276-041	19410	1
2	PEELER VALVE NECK	38349-413	10000	1	19	CHECK VALVE ASSY	46411-112	---	1
3	HEX HD CAPSCREW	B0403 1/2	15991	4	20 *	-CHECK VALVE	38671-413	19020	1
4	LOCKWASHER	J04	15991	4	21	-LOCKWASHER	J#10	17000	1
5 *	VALVE PLATE GSKT	38687-555	19060	1	22	-HEX NUT	D#10	17000	1
6	VALVE PLATE	33541-040	17000	1	23	-FLATWASHER	21161-810	---	1
7	HEX HD CAPSCREW	B0402 1/2	15991	4	24	-HEX HD CAPSCREW	B#10-02	17000	1
8	LOCKWASHER	J04	15991	4	25	-FLATWASHER	21161-811	---	1
9 *	3.85 FT LINEAR O-RING	18512-056	---	1	26	-SEALING WASHER	25123-056	---	1
10	HEX HD CAPSCREW	B0605	15991	12	27	STUD	C0607	17000	2
11	LOCKWASHER	J06	15991	12	28	HEX LOCK NUT	DD06	17000	2
12	GUIDE PLATE	33522-009	17000	2	29	HEX HD CAPSCREW	B0604	17000	4
13	FLAT HD CAPSCREW	F#10-03	17000	6	30	LOCKWASHER	J06	17000	4
14	LOCKWASHER	J#10	17000	6	31	FLAT WASHER	KB06	17000	8
15	HEX NUT	D#10	17000	6	32 *	PRIMING VALVE FLOAT	38349-412	19220	1
16	VLV STRAP BRKT ASSY	41881-597	2415X	1	33	PRIMING CHAMBER	38343-018	10000	1
17	CLAMP PLATE	38349-411	14000	1	34	VLV STRAP PROTECTOR	33271-019	19000	2

* INDICATES PARTS RECOMMENDED FOR STOCK

THE GORMAN-RUPP COMPANY • MANSFIELD, OHIO

GORMAN-RUPP OF CANADA LIMITED • ST. THOMAS, ONTARIO, CANADA Printed in U.S.A.

**For U.S. and International Warranty Information,
Please Visit www.grpumps.com/warranty
or call:
U.S.: 419-755-1280
International: +1-419-755-1352**

**For Canadian Warranty Information,
Please Visit www.grcanada.com/warranty
or call:
519-631-2870**