



PRIME-AIRE® SERIES
PUMP MODEL
PA10A60–6068T–A

**MANUAL
PART 2 of 3**

**PARTS
LIST
WITH
PERFORMANCE CURVE**

THE GORMAN-RUPP COMPANY • MANSFIELD, OHIO

GORMAN-RUPP OF CANADA LIMITED • ST. THOMAS, ONTARIO, CANADA Printed in U.S.A.

©Copyright by the Gorman-Rupp Company



The engine exhaust from this product contains chemicals known to the State of California to cause cancer, birth defects or other reproductive harm.

PERFORMANCE CURVE – SECTION A

RECORDING MODEL AND SERIAL NUMBERS

Please record the pump model and serial number in the spaces provided below and in the separate Installation/Operation Manual accompanying your pump. Your Gorman-Rupp distributor needs this information when you require parts or service.

Pump Model: _____

Serial Number: _____

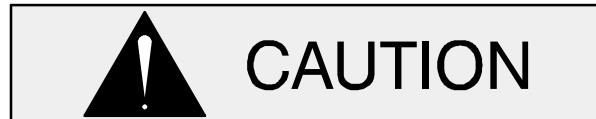
WARRANTY INFORMATION

The pump warranty is provided as part of Gorman-Rupp's support program for customers who operate and maintain their equipment as described in this manual and other accompanying literature. Please note that should the equipment be abused or modified to change its performance beyond the original factory specifications, the warranty will become void and any claim will be denied.

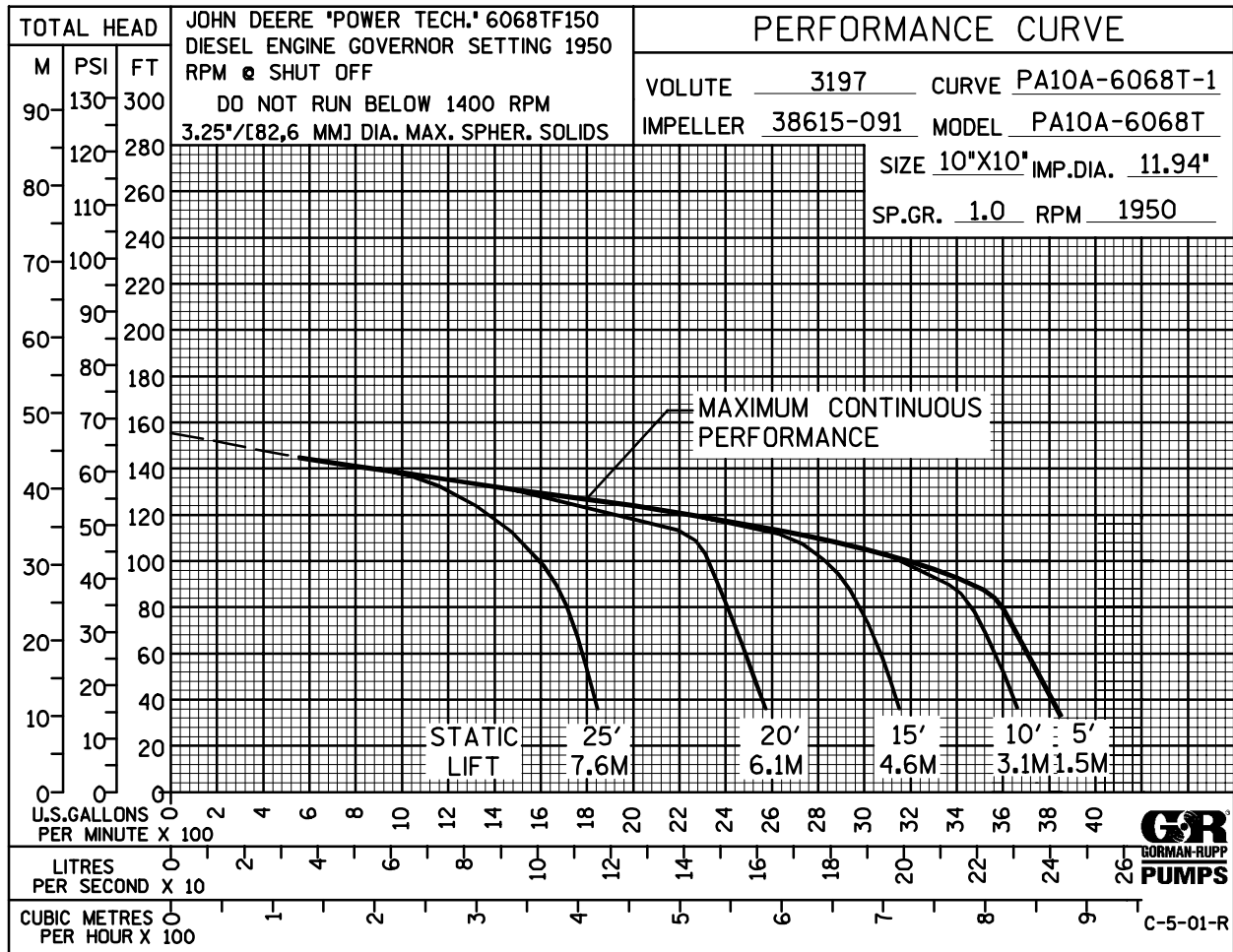
PERFORMANCE CURVE

The performance curve on the following page is based on 70° F (21° C) clear water at sea level with minimum suction lift. Since pump installations are seldom identical, your performance may be different due to such factors as viscosity, specific gravity, elevation, temperature, and impeller trim.

If your pump serial number is followed by an "N", your pump is **NOT** a standard production model. Contact the Gorman-Rupp Company to verify performance or part numbers.

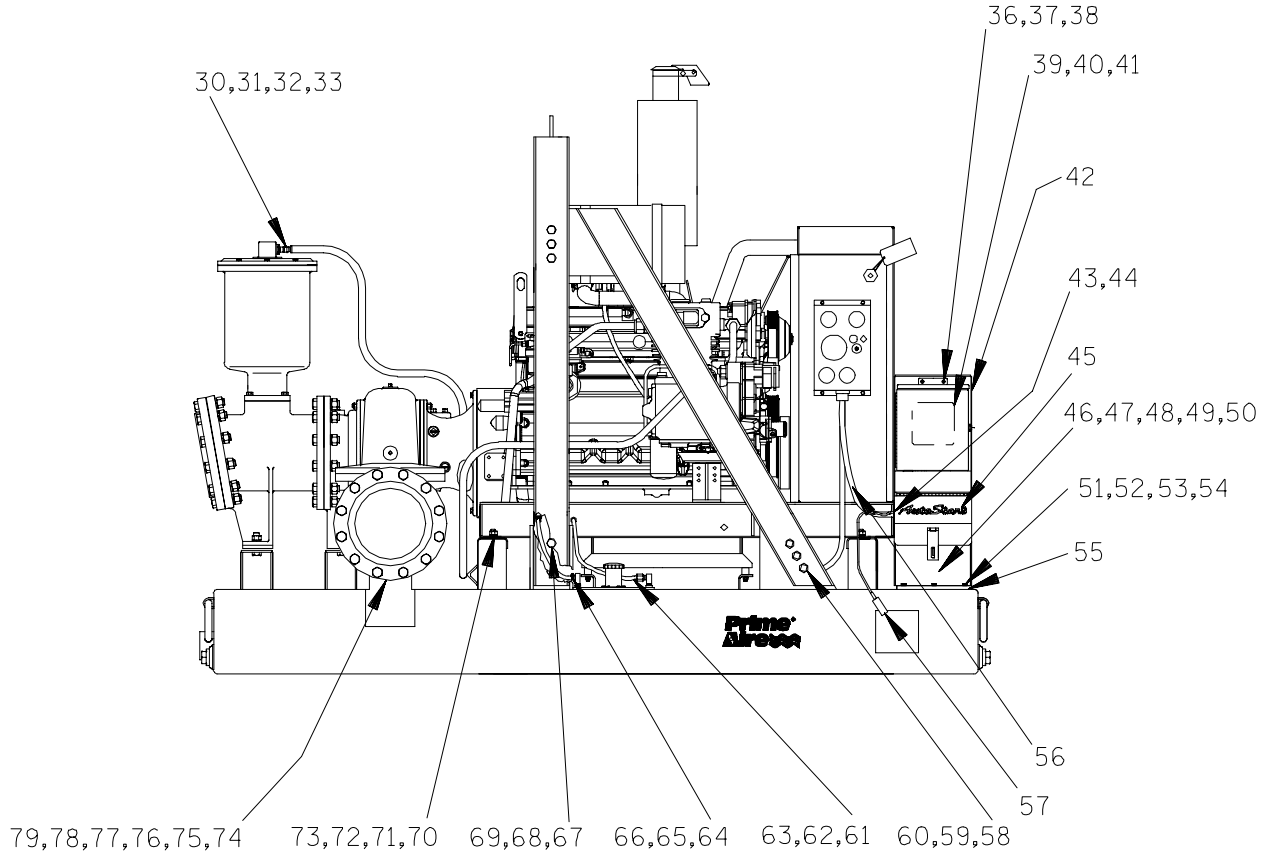
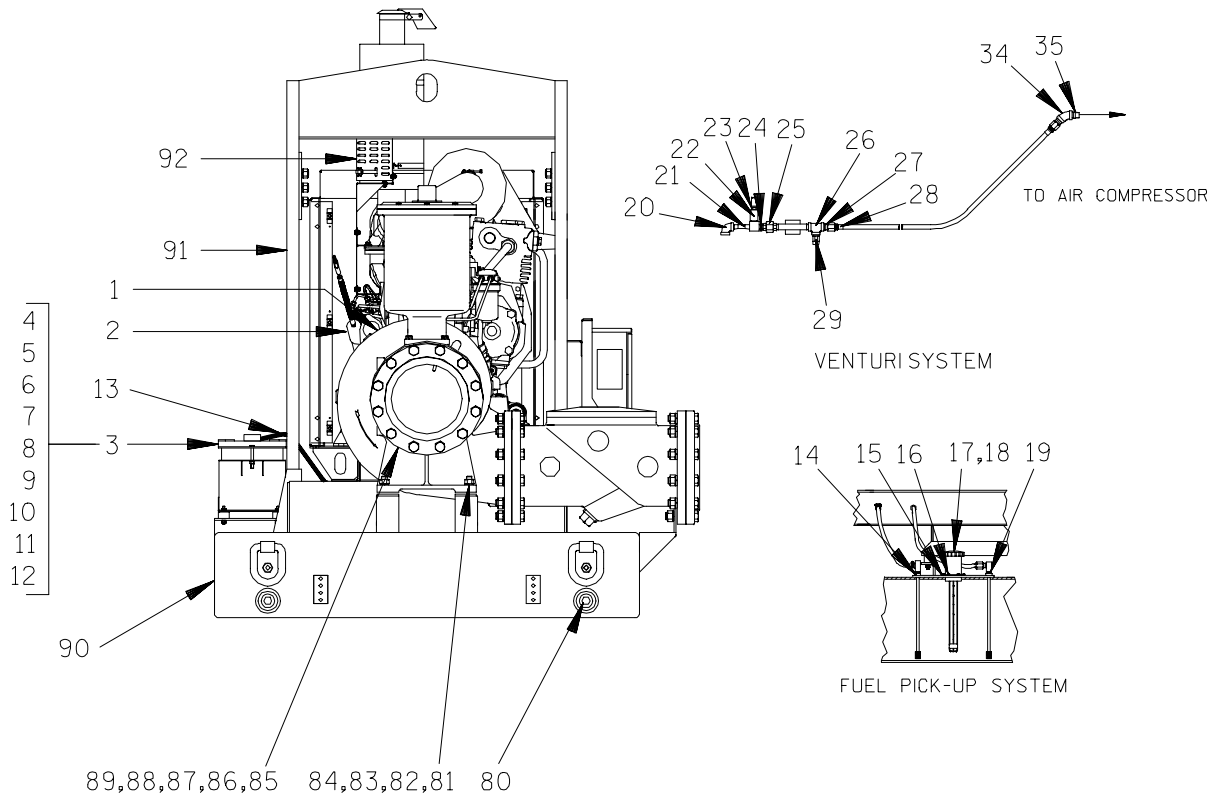


Pump speed and operating condition points must be within the continuous performance range shown on the curve.



Performance Curve – Model PA10A60-6068T-A

This Page Intentionally Blank



THE GORMAN-RUPP COMPANY • MANSFIELD, OHIO

GORMAN-RUPP OF CANADA LIMITED • ST. THOMAS, ONTARIO, CANADA

Printed in U.S.A.

S/N 1268352 Up
PUMP ISSUE 1

PARTS LIST
PA10A60-6068T-A Pump Model

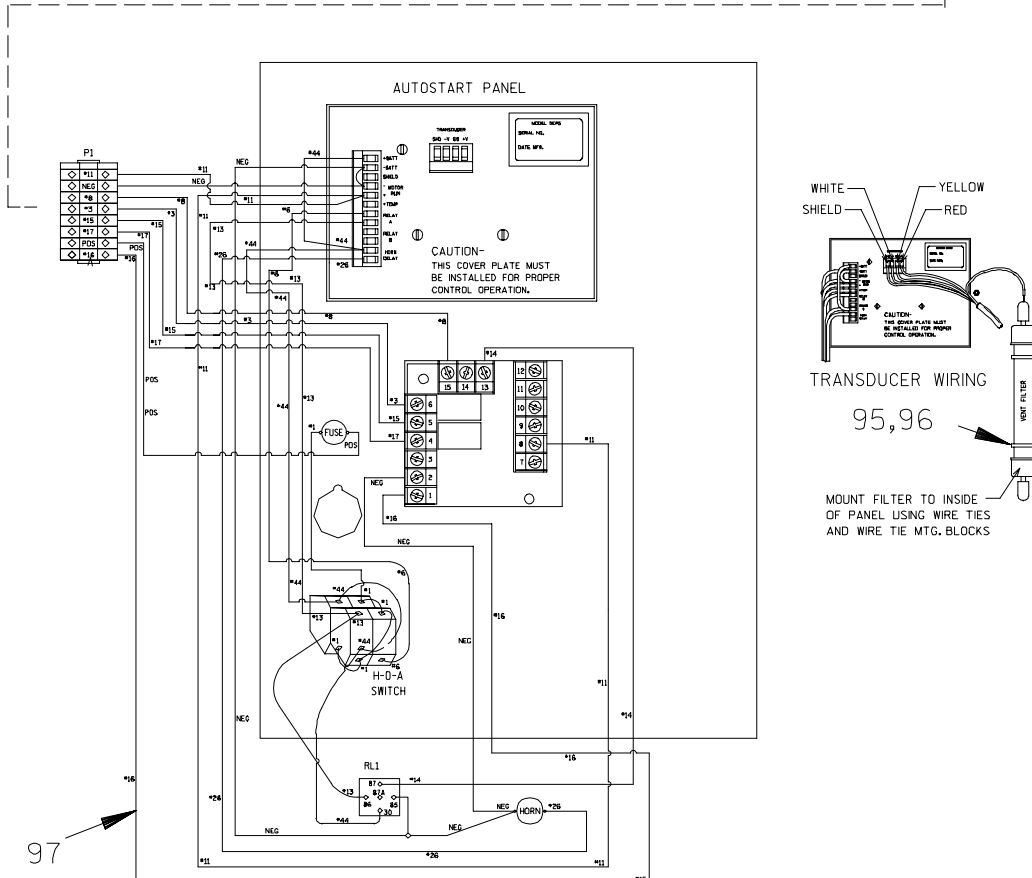
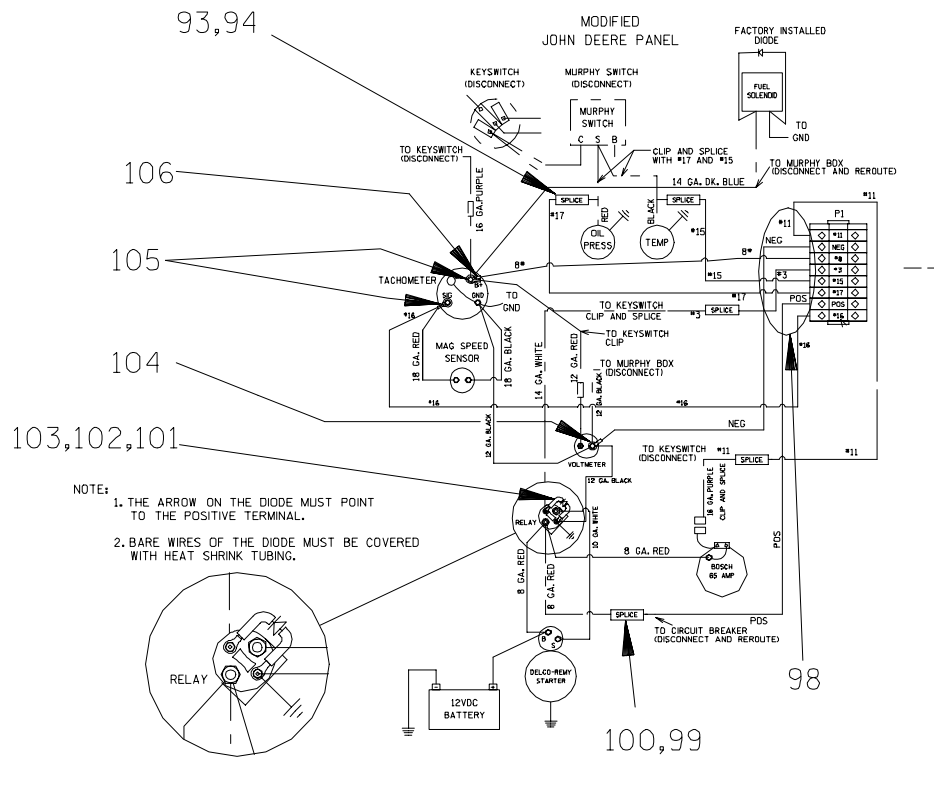
If your pump serial number is followed by an "N", your pump is **NOT** a standard production model. Contact the Gorman-Rupp Company to verify part numbers.

ITEM NO.	PART NAME	PART NUMBER	MAT'L CODE	QTY	ITEM NO.	PART NAME	PART NUMBER	MAT'L CODE	QTY
1	PUMP END ASSY	PA10A60-(SAE3/11.5)		1	47	HEX HD CAPSCREW	B0602-1/2	15991	1
2	JOHN DEERE 6068TF150	29224-203	---	1	48	FLAT WASHER	K06	15991	1
3	BATTERY BOX ASSY	GRP40-08D	---	1	49	LOCKWASHER	J06	15991	1
4	-HEX HD CAPSCREW	B0607	15991	2	50	HEX NUT	D06	15991	1
5	-FLAT WASHER	K06	15991	2	51	HEX HD CAPSCREW	B0602	15991	3
6	-FLANGED HEX NUT	21765-314	---	10	52	LOCKWASHER	J06	15991	3
7	-STUD MOUNT	24631-006	---	4	53	FLAT WASHER	K06	15991	3
8	-BATTERY TAG	38818-506	---	1	54	HEX NUT	D06	15991	3
9	-BATTERY BX LID ASSY	42113-012	24150	1	55	12" FOAM TAPE	18668-003	---	1
10	-BATTERY BOX ASSY	42431-030	24150	1	56	48" CABLE WRAPPING	18763-026	---	1
11	-GRD CABLE ASSY	47311-159	---	1	57	50' TRANSDUCER	27788-182	---	1
12	-12V BATTERY	SEE OPTIONS		1	58	HEX HD CAPSCREW	B1207	15991	6
13	POS CABLE ASSY	47311-109	---	1	59	LOCKWASHER	J12	15991	6
14	FUEL PICKUP	29332-145	---	1	60	HEX NUT	D12	15991	6
15 *	FUEL GAUGE GASKET	38683-270	19060	1	61	MALE ELBOW	26351-131	---	1
16	HEX HD MACH SCREW	B#10-02S	15991	6	62	CONNECTOR	S1447	---	1
17	FUEL GAUGE	29332-135	---	1	63	HOSE ASSY	46341-816	---	1
18	FILL NECK ASSY	46312-017	24152	1	64	HOSE BARB FITTING	26523-386	---	2
19	FUEL PICKUP	29332-145	---	1	65	FUEL LINE	11308M	---	1
20	PIPE ELBOW	AG08	11999	1	66	HOSE CLAMP	26518-641	---	2
21	VENTURI	26817-002	---	1	67	HEX HD CAPSCREW	B1207	15991	6
22	PIPE COUPLING	AE08	15079	1	68	LOCKWASHER	J12	15991	6
23	MALE HOSE END	26525-020	---	1	69	HEX NUT	D12	15991	6
24	RED PIPE BUSH	AP0806	15079	1	70	HEX HD CAPSCREW	B1006	15991	4
25	PIPE UNION	AH08	11999	1	71	LOCKWASHER	J10	15991	4
26	TEE	U08	11999	1	72	HEX NUT	D10	15991	4
27	MALE ADAPTOR	26351-065	---	2	73	FLAT WASHER	K10	15991	4
28	HOSE ASSY	46341-427	---	1	74	HEX HD CAPSCREW	B1414	15991	10
29	RELIEF VALVE	26662-028	---	1	75	DISCHARGE FLANGE	2751	10010	1
30	REDUCER BUSHING	AP1608	11999	1	76 *	DISCH FLANGE GASKET	25113-040	---	1
31	CONNECTOR	S1598	---	1	77	HEX HD CAPSCREW	B1416	15991	2
32	HOSE BARB FTG	26523-047	---	1	78	LOCKWASHER	J14	15991	12
33	3.25 FT HOSE	18513-113	---	1	79	HEX NUT	D14	15991	12
34	PIPE ELBOW	AG08	11999	1	80	PIPE PLUG	P32	10009	4
35	PIPE NIPPLE	T0806	15070	1	81	HEX HD CAPSCREW	B1211	15991	4
36	RD HD MACH SCREW	X#10-02	15991	4	82	LOCKWASHER	J12	15991	4
37	NYLON LOCK NUT	BC#10	15991	4	83	HEX NUT	D12	15991	4
38	FLAT WASHER	K#10	15991	4	84	FLAT WASHER	K12	15991	4
39	CONTROL BOX ASSY	47651-093	---	1	85	SUCTION FLANGE	2751	10010	1
40	6" G-R DECAL	GR-06	---	1	86 *	SUCT FLANGE GASKET	25113-040	---	1
41	INSTRUCTION DECAL	38818-139	---	1	87	HEX HD CAPSCREW	B1416	15991	12
42	CONTROL MTG STAND	41881-537	24150	1	88	LOCKWASHER	J14	15991	12
43	FIBER BUSHING	27137-508	---	1	89	HEX NUT	D14	15991	12
44	CONDUIT LOCK NUT	27185-007	---	1	90	BASE/FUEL TANK	41553-003	24150	1
45	AUTOSTART DECAL	38818-086	---	1	91	LIFT BAIL ASSY	44715-036	---	1
46	MOUNTING FOOT	34123-019	15120	1	92	MANIFOLD GRD ASSY	42331-056	---	1

* INDICATES PARTS RECOMMENDED FOR STOCK

THE GORMAN-RUPP COMPANY • MANSFIELD, OHIO

GORMAN-RUPP OF CANADA LIMITED • ST. THOMAS, ONTARIO, CANADA Printed in U.S.A.



THE GORMAN-RUPP COMPANY • MANSFIELD, OHIO

GORMAN-RUPP OF CANADA LIMITED • ST. THOMAS, ONTARIO, CANADA

Printed in U.S.A.

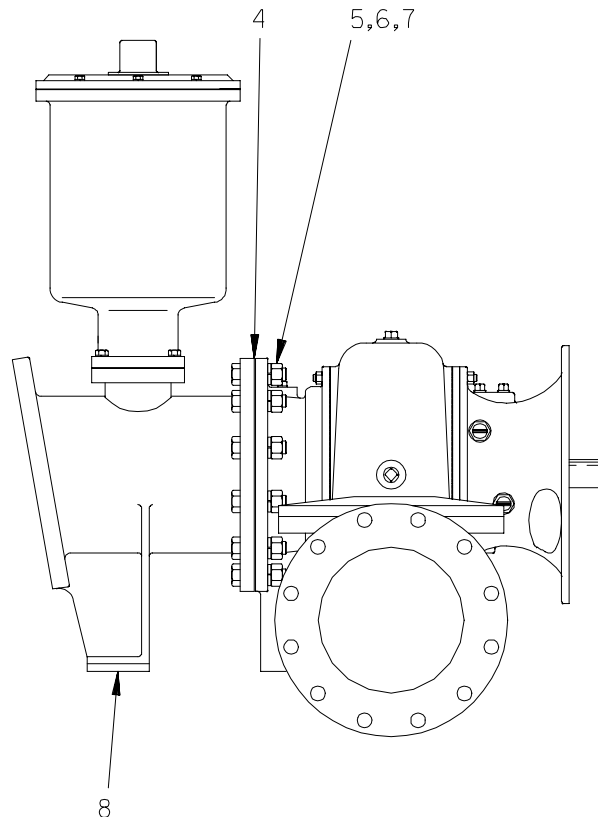
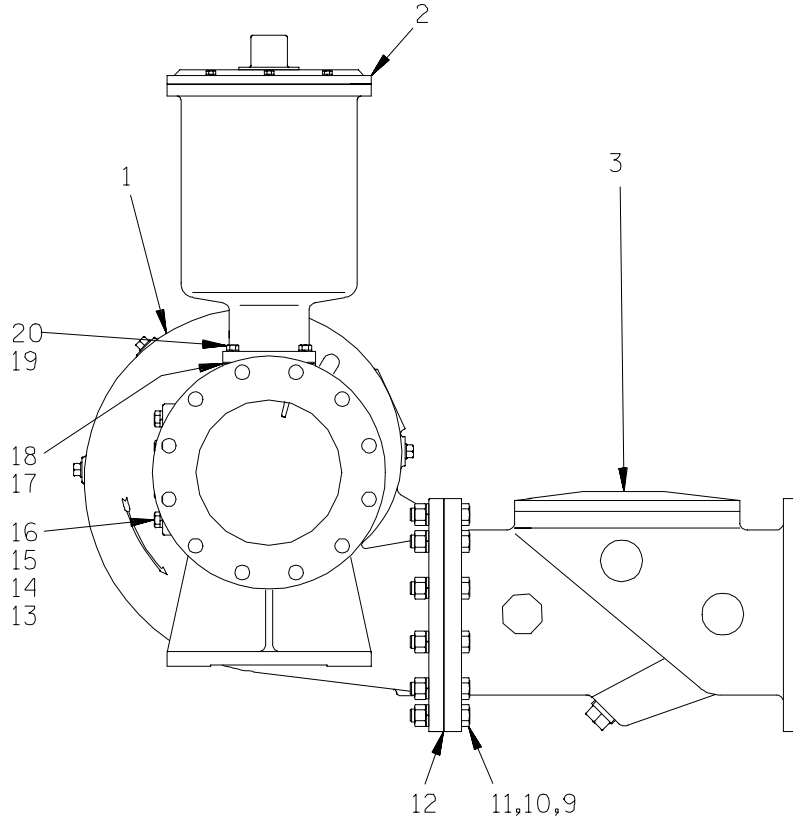
S/N 1268352 Up
PUMP ISSUE 1

PARTS LIST
PA10A60-6068T-A Pump Model

If your pump serial number is followed by an "N", your pump is **NOT** a standard production model. Contact the Gorman-Rupp Company to verify part numbers.

ITEM NO.	PART NAME	PART NUMBER	MAT'L CODE	QTY	ITEM NO.	PART NAME	PART NUMBER	MAT'L CODE	QTY
93	BUTT SPLICE	27284-302	---	4		WARNING DECAL	38816-218	---	2
94	3.5" HEAT SHRINK TUBE	18763-245	---	1		PA DECAL	38812-078	---	2
95	CABLE TIE	27111-202	---	2		WARNING DECAL	2613FE	---	2
96	CABLE TIE MTG BLOCK	27111-352	---	2		G-R DECAL	GR-06	---	4
97	WIRE ASSY	47334-052	---	1		INSTR TAG PAPER	38817-009	---	1
98	37' 16 AWG BLUE WIRE	18162-017	---	1		ENG START-UP TAG	38816-269	---	1
99	BUTT SPLICE	27284-303	---	1		STRAINER	46641-011	24150	1
100	1" HEAT SHRINK TUBE	18763-245	---	1		WARNING DECAL	38816-175	---	2
101	RING TERMINAL	27214-515	---	2		OIL LEVEL DECAL	38816-123	---	2
102	2" HEAT SHRINK TUBE	18763-245	---	1		LUBE DECAL	11421A	---	1
103	DIODE	27761-003	---	1		DISCHARGE STICKER	6588BJ	---	1
104	RING TERMINAL	27214-515	---	1		SUCTION STICKER	6588AG	---	1
105	RING TERMINAL	27214-515	---	2		WARNING DECAL	38816-203	---	3
106	RING TERMINAL	27214-525	---	1					
NOT SHOWN:					OPTIONAL:				
	INSTRUCTION DECAL	38818-128	---	1		12V BATTERY	29331-506	---	1
	CAUTION DECAL	2613FJ	---	1		WHEEL KIT	GRP30-253	---	1

* INDICATES PARTS RECOMMENDED FOR STOCK



THE GORMAN-RUPP COMPANY • MANSFIELD, OHIO

GORMAN-RUPP OF CANADA LIMITED • ST. THOMAS, ONTARIO, CANADA

Printed in U.S.A.

S/N 1268352 Up
PUMP ISSUE 1

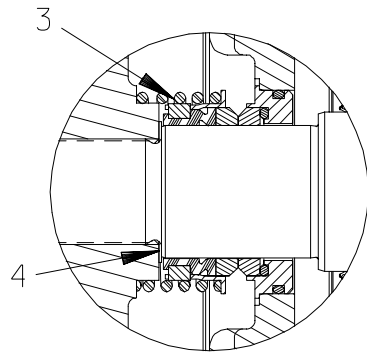
PARTS LIST
PA10A60-(SAE 3/11.5) Pump Model Assembly

ITEM NO.	PART NAME	PART NUMBER	MAT'L CODE	QTY
1	PUMP END ASSY	610N60-(SAE3/11.5)		1
2	PRIMING CHAMBER ASSY	46112-704	---	1
3	VALMATIC CHECK VALVE	26642-127	---	1
4	* SUCT SPOOL GASKET	25113-040	---	1
5	HEX HD CAPSCREW	B1414	15991	12
6	HEX NUT	D14	15991	12
7	LOCKWASHER	J14	15991	12
8	SUCTION SPOOL	38642-615	10000	1
9	HEX HD CAPSCREW	B1414	15991	12
10	HEX NUT	D14	15991	12
11	LOCKWASHER	J14	15991	12
12	* CHECK VALVE GASKET	25113-040	---	1
13	BLIND FLANGE ASSY	42111-358	---	1
14	* BLIND FLANGE GASKET	25113-034	---	1
15	HEX HD CAPSCREW	B1007	15991	8
16	LOCKWASHER	J10	15991	8
17	* BAFFLE GASKET	38687-053	19060	1
18	BAFFLE	31113-011	17000	1
19	HEX HD CAPSCREW	B0807	15991	4
20	LOCKWASHER	J08	15991	4

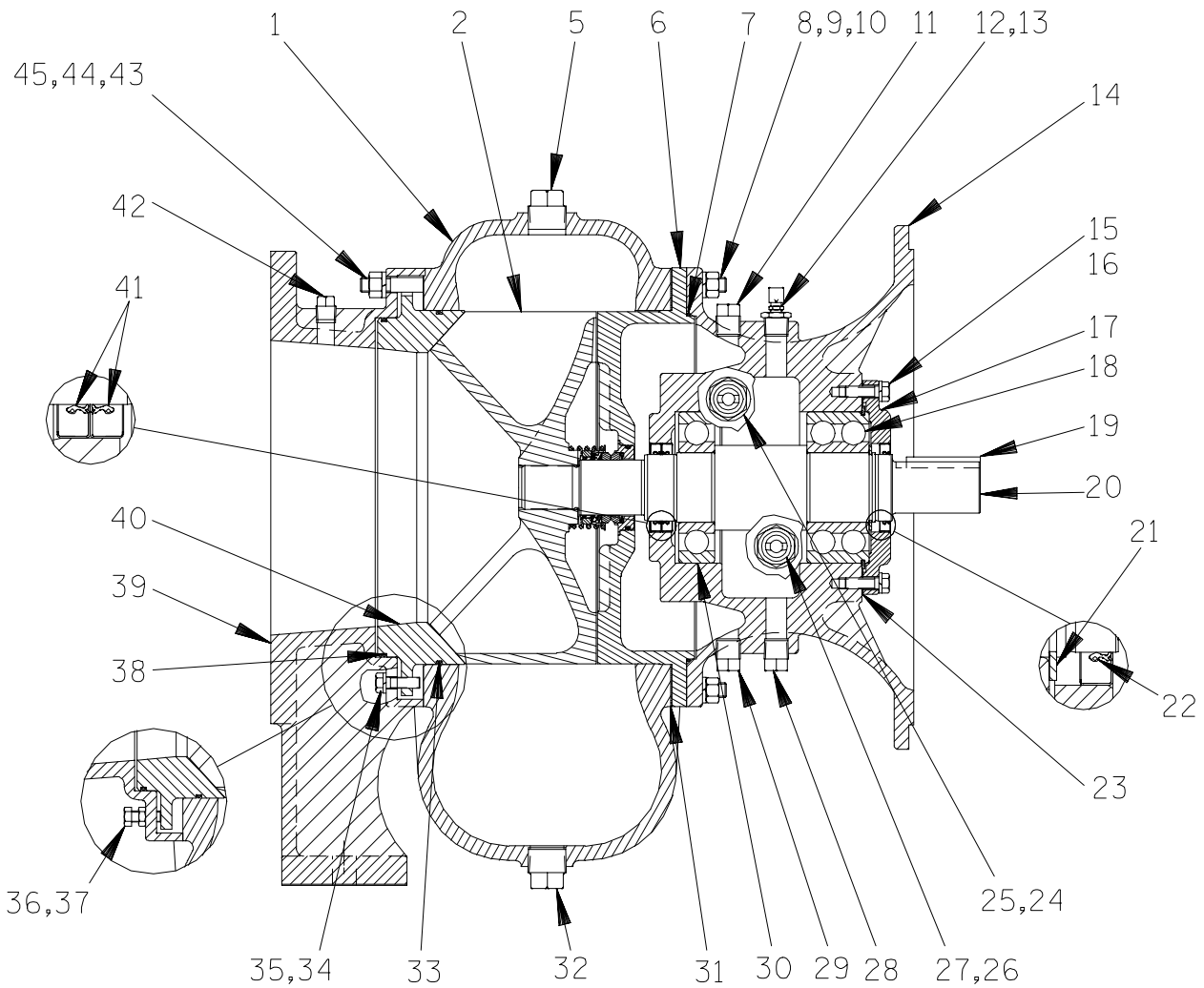
* INDICATES PARTS RECOMMENDED FOR STOCK

THE GORMAN-RUPP COMPANY • MANSFIELD, OHIO

GORMAN-RUPP OF CANADA LIMITED • ST. THOMAS, ONTARIO, CANADA Printed in U.S.A.



SEAL AREA DETAIL



THE GORMAN-RUPP COMPANY • MANSFIELD, OHIO

GORMAN-RUPP OF CANADA LIMITED • ST. THOMAS, ONTARIO, CANADA

Printed in U.S.A.

July 23, 2003

©Copyright by the Gorman-Rupp Company

7 of 11

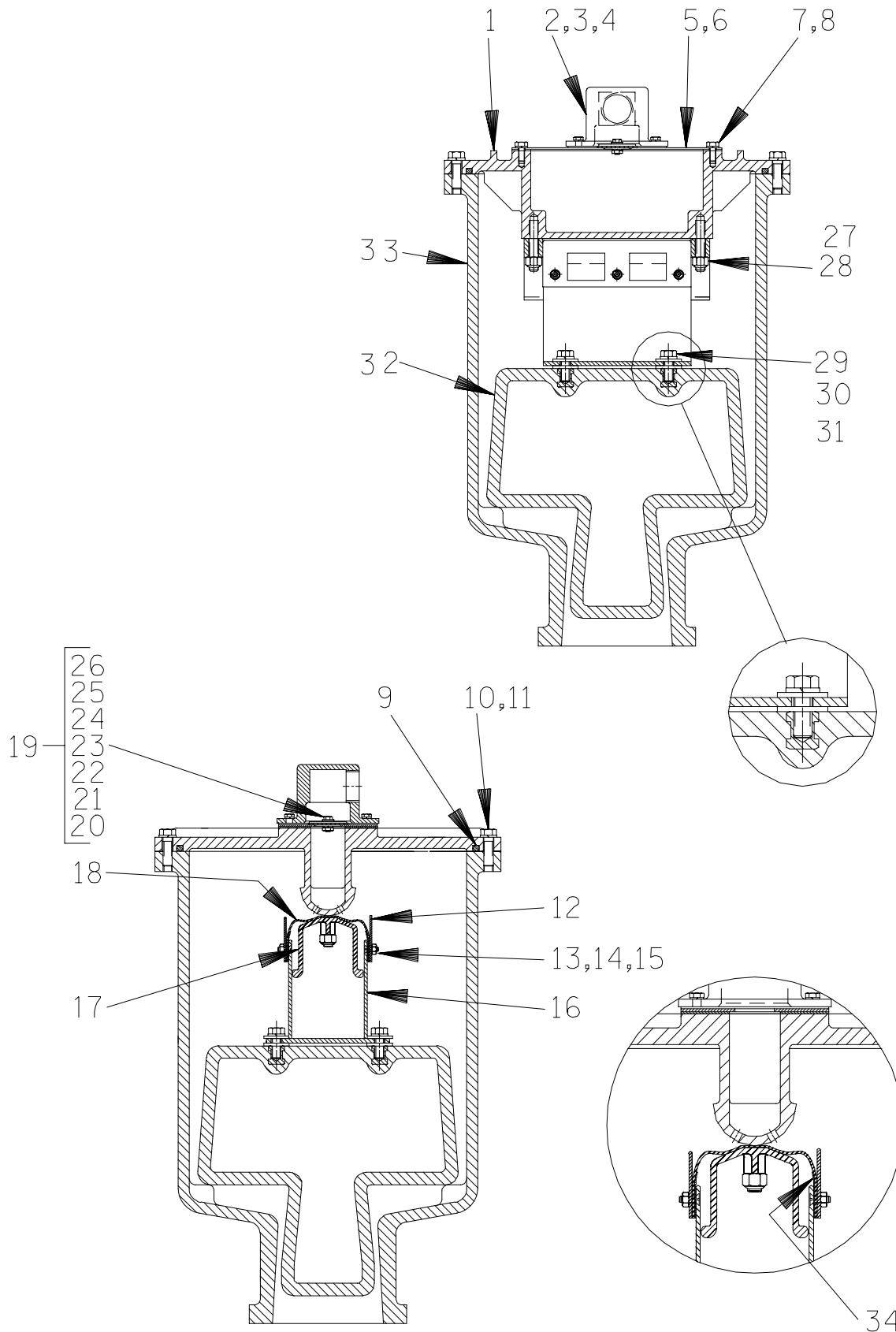
Page 64.10 A30

S/N 1268352 Up
PUMP ISSUE 1

PARTS LIST
610N60-(SAE 3/11.5) Pump End Assembly

ITEM NO.	PART NAME	PART NUMBER	MAT'L CODE	QTY	ITEM NO.	PART NAME	PART NUMBER	MAT'L CODE	QTY
1	PUMP CASING	3197	10010	1	31 *	SEAL PLATE GSKT	3200G	18000	1
2 *	IMPELLER	38615-091	11010	1	32	CASING DRAIN PLUG	P16	10009	1
3 *	SEAL ASSY	46512-048	---	1	33 *	WEAR RING O-RING	25152-277	---	1
4	IMP ADJ SHIM SET	5091	17090	1	34	HEX HD CAPSCREW	B0605	15991	4
5	PIPE PLUG	P16	10009	5	35	LOCKWASHER	J06	15991	4
6	SEAL PLATE	38272-716	10000	1	36	HEX HD CAPSCREW	B0604	15991	4
7 *	CASING O-RING	25152-276	---	1	37	JAM NUT	AT06	15991	4
8	STUD	C0810	15991	12	38 *	WEAR RING O-RING	25152-276	---	1
9	HEX NUT	D08	15991	12	39	SUCTION HEAD	38248-506	10000	1
10	LOCKWASHER	J08	15991	12	40 *	WEAR RING	38691-634	11010	1
11	VENTED PLUG	4823A	15079	1	41 *	OIL SEAL	25258-725	---	2
12	RED PIPE BUSHING	AP0802	15079	1	42	PIPE PLUG	P06	15079	1
13	AIR VENT	S1530	---	1	43	STUD	C0811	15991	12
14	INTERMEDIATE	38264-705	10000	1	44	HEX NUT	D08	15991	12
15	HEX HD CAPSCREW	B0605	15991	6	45	LOCKWASHER	J08	15991	12
16	LOCKWASHER	J06	15991	6					
17	BEARING COVER	38322-432	10000	1					
18 *	BALL BEARING	23422-413	---	1	NOT SHOWN:				
19 *	SHAFT KEY	N0610	15990	1		LUBE DECAL	11421A	---	1
20 *	IMPELLER SHAFT	38512-523	1706H	1		SUCTION DECAL	6588AG	---	1
21	RETAINING RING	24124-052	---	1		DISCHARGE STICKER	6588BJ	---	1
22 *	OIL SEAL	225258-725	---	1		NAME PLATE	38818-127	13000	1
23 *	BRG COVER GASKET	38683-475	18000	1		DRIVE SCREW	BM#04-03	17000	4
24	SIGHT GAUGE	S1471	---	1		INTERMEDIATE GUARD	42381-031	24152	2
25	PIPE PLUG	P12	15079	1		DRIVE ASSY	44162-157	---	1
26	SIGHT GAUGE	S1471	---	1		HEX HX CAPSCREW	B0604	15991	2
27	PIPE PLUG	P12	15079	1		PIPE PLUG	P04	15079	1
28	BRG CVTY DRAIN PLUG	P08	15079	1	OPTIONAL:				
29	SEAL CVTY DRAIN PLUG	P08	15079	1		G-R HARD IRON IMPELLER			
30 *	BALL BEARING	S1911	---	1			38615-091	1102H	1

* INDICATES PARTS RECOMMENDED FOR STOCK



THE GORMAN-RUPP COMPANY • MANSFIELD, OHIO

GORMAN-RUPP OF CANADA LIMITED • ST. THOMAS, ONTARIO, CANADA

Printed in U.S.A.

S/N 1268352 Up
PUMP ISSUE 1

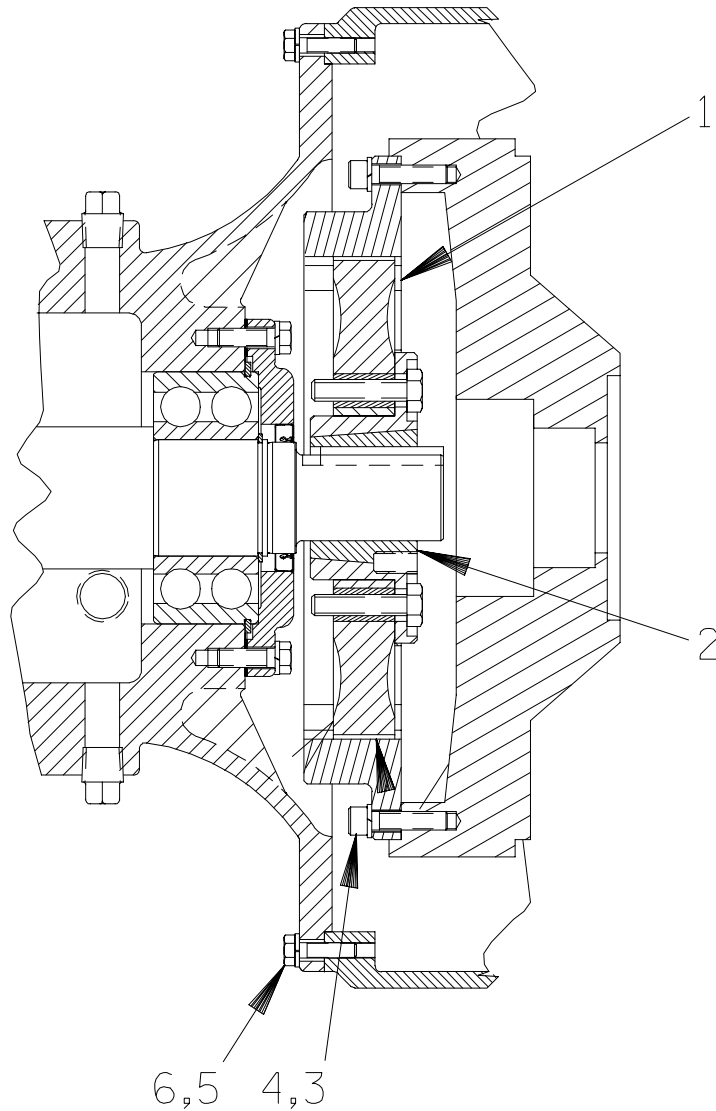
PARTS LIST
46112-704 Priming Chamber Assembly

ITEM NO.	PART NAME	PART NUMBER	MAT'L CODE	QTY	ITEM NO.	PART NAME	PART NUMBER	MAT'L CODE	QTY
1	PRIMING CHAMBER LID	38346-615	1300U	1	18	VALVE STRAP	33276-041	19410	1
2	PEELER VALVE NECK	38349-413	10000	1	19	CHECK VALVE ASSY	46411-112	---	1
3	HEX HD CAPSCREW	B0403-1/2	15991	4	20 *	-CHECK VALVE	38671-413	19020	1
4	LOCKWASHER	J04	15991	4	21	-LOCKWASHER	J#10	17000	1
5 *	VALVE PLATE GSKT	38687-555	19060	1	22	-HEX NUT	D#10	17000	1
6	VALVE PLATE	33541-040	17000	1	23	-FLAT WASHER	21161-810	---	1
7	HEX HD CAPSCREW	B0402-1/2	15991	4	24	-HEX HD CAPSCREW	B#10-02	17000	1
8	LOCKWASHER	J04	15991	4	25	-FLAT WASHER	21161-811	---	1
9 *	3.857 FT LINEAR O-RING	18512-056	---	1	26	-SEALING WASHER	25123-056	---	2
10	HEX HD CAPSCREW	B0605	15991	12	27	STUD	C0607	17000	2
11	LOCKWASHER	J06	15991	12	28	HEX LOCKNUT	DD06	17000	2
12	GUIDE PLATE	33522-009	17000	2	29	HEX HD CAPSCREW	B0604	17000	4
13	FLAT HD CAPSCREW	F#10-03	17000	6	30	LOCKWASHER	J06	17000	4
14	LOCKWASHER	J#10	17000	6	31	FLAT WASHER	KB06	17000	8
15	HEX NUT	D#10	17000	6	32	PRIM VALVE FLOAT	38349-412	19220	1
16	VLV STRAP BRKT ASSY	41881-597	2415X	1	33	PRIMING CHAMBER	38343-018	10000	1
17	CLAMP PLATE	38349-411	14000	1	34	VLV STRAP PROTECTOR	33271-019	19000	2

* INDICATES PARTS RECOMMENDED FOR STOCK

THE GORMAN-RUPP COMPANY • MANSFIELD, OHIO

GORMAN-RUPP OF CANADA LIMITED • ST. THOMAS, ONTARIO, CANADA Printed in U.S.A.



PARTS LIST
44162-157 Drive Assembly

ITEM NO.	PART NAME	PART NUMBER	MAT'L CODE	QTY
1	COUPLING W/O BUSHING	24391-102	---	1
2	BUSHING	24131-497	---	1
3	SOCKET HD CAPSCREW	BD0606	15990	8
4	LOCKWASHER	J06	15991	8
5	HEX HD CAPSCREW	B0605	15991	12
6	LOCKWASHER	J06	15991	12

THE GORMAN-RUPP COMPANY • MANSFIELD, OHIO

GORMAN-RUPP OF CANADA LIMITED • ST. THOMAS, ONTARIO, CANADA

Printed in U.S.A.

**For U.S. and International Warranty Information,
Please Visit www.grpumps.com/warranty
or call:
U.S.: 419-755-1280
International: +1-419-755-1352**

**For Canadian Warranty Information,
Please Visit www.grcanada.com/warranty
or call:
519-631-2870**