



***PRIME-AIRE[®]* SERIES**
PUMP MODEL
PA10A60-6068T

MANUAL
PART 2 of 3

PARTS
LIST
WITH
PERFORMANCE CURVE

THE GORMAN-RUPP COMPANY • MANSFIELD, OHIO

www.gormanrupp.com

GORMAN-RUPP OF CANADA LIMITED • ST. THOMAS, ONTARIO, CANADA

Printed in U.S.A.

©Copyright by the Gorman-Rupp Company



The engine exhaust from this product contains chemicals known to the State of California to cause cancer, birth defects or other reproductive harm.

PERFORMANCE CURVE – SECTION A

RECORDING MODEL AND SERIAL NUMBERS

Please record the pump model and serial number in the spaces provided below and in the separate Installation/Operation Manual accompanying your pump. Your Gorman-Rupp distributor needs this information when you require parts or service.

Pump Model: _____

Serial Number: _____

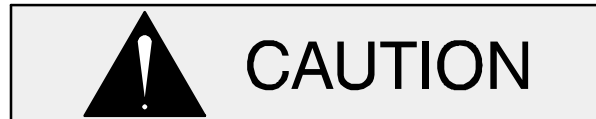
WARRANTY INFORMATION

The pump warranty is provided as part of Gorman-Rupp's support program for customers who operate and maintain their equipment as described in this manual and other accompanying literature. Please note that should the equipment be abused or modified to change its performance beyond the original factory specifications, the warranty will become void and any claim will be denied.

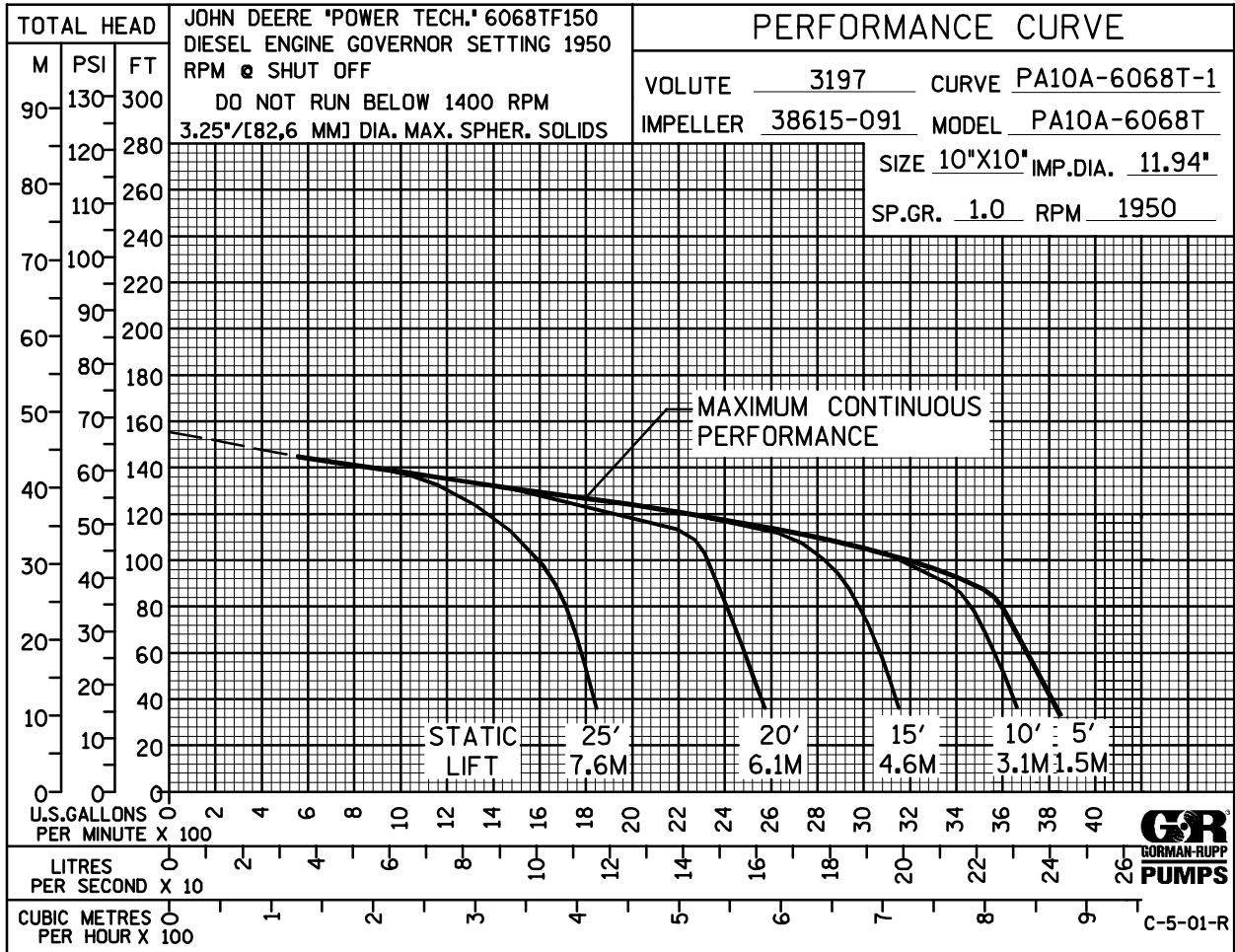
PERFORMANCE CURVE

The performance curve on the following page is based on 70° F (21° C) clear water at sea level with minimum suction lift. Since pump installations are seldom identical, your performance may be different due to such factors as viscosity, specific gravity, elevation, temperature, and impeller trim.

If your pump serial number is followed by an "N", your pump is **NOT** a standard production model. Contact the Gorman-Rupp Company to verify performance or part numbers.

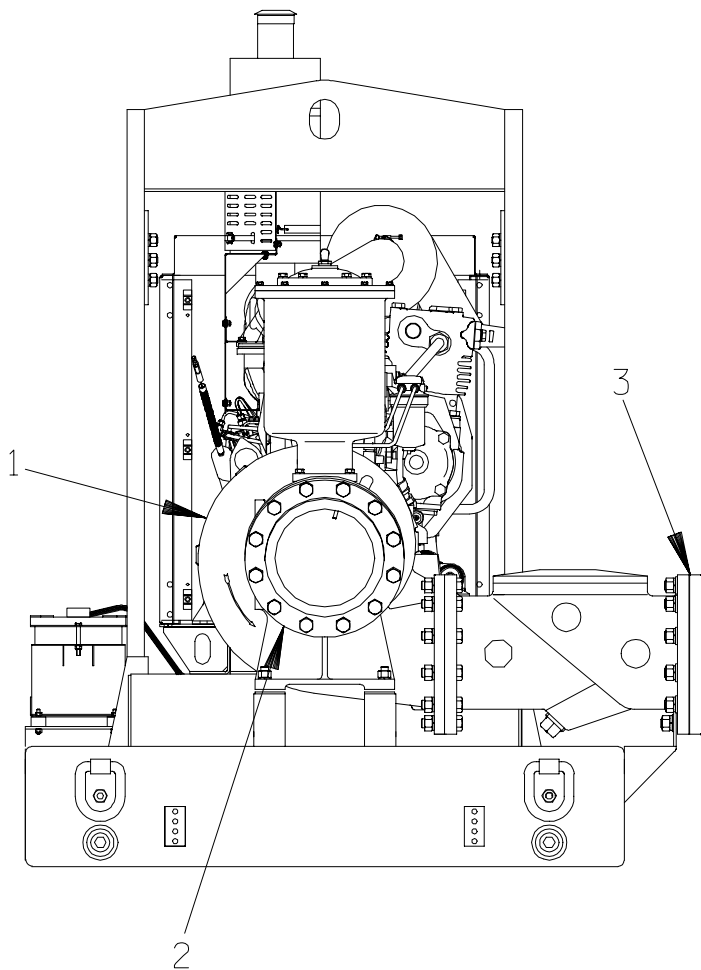


Pump speed and operating condition points must be within the continuous performance range shown on the curve.



Performance Curve – Model PA10A60-6068T

S/N 1282499 Up
PUMP ISSUE 2



PARTS LIST

PA10A60-6068T Pump Model Assembly

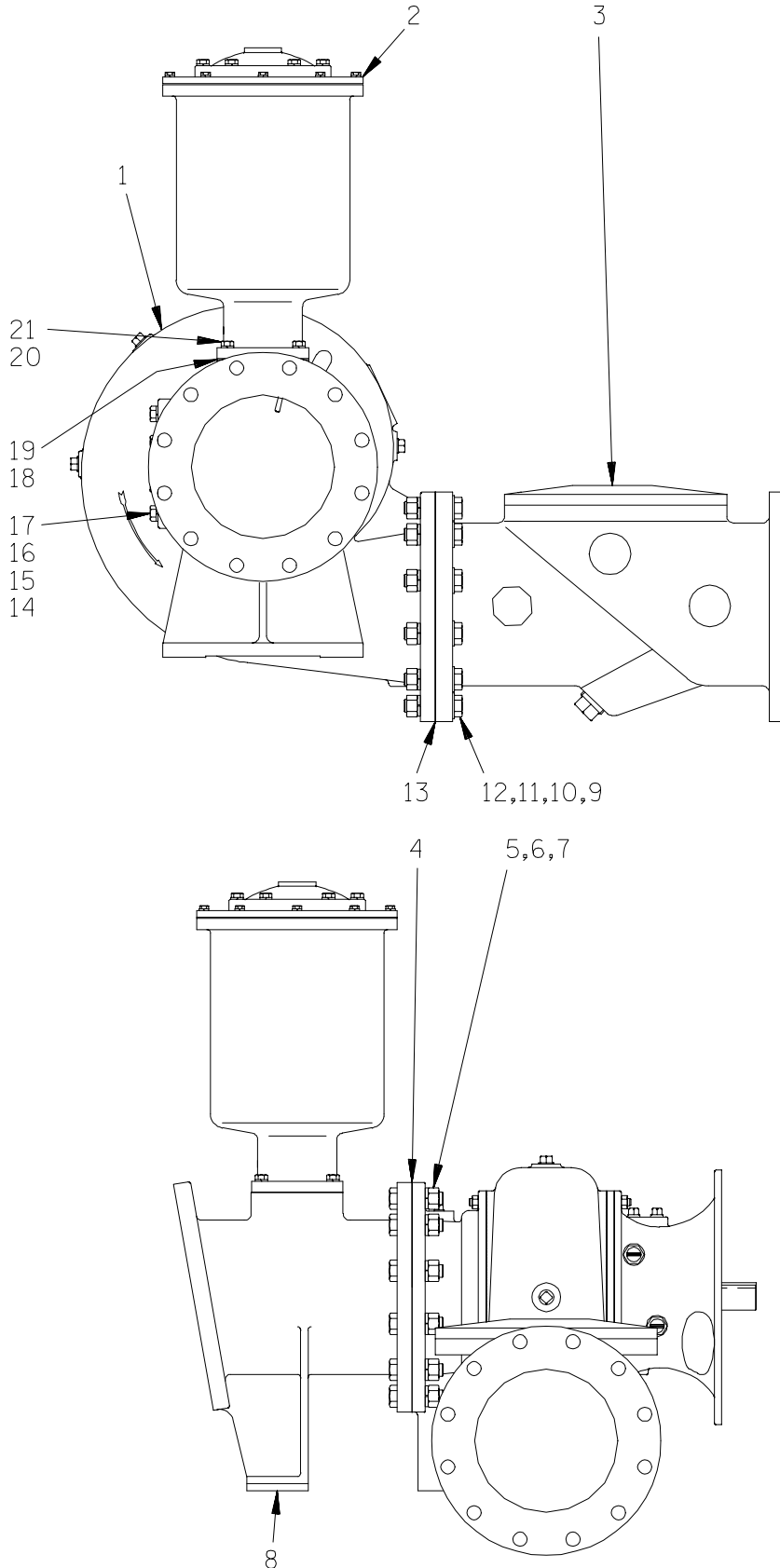
If your pump serial number is followed by an "N", your pump is **NOT** a standard production model. Contact the Gorman-Rupp Company to verify part numbers.

| ITEM NO. | PART NAME | PART NUMBER | MAT'L CODE | QTY |
|------------|------------------------------------|-------------|------------|-----|
| 1 | PA10A60-(SAE 3/11.5) PUMP END ASSY | 46133-636 | --- | 1 |
| 2 | * SUCTION FLANGE GASKET | 25113-040 | --- | 1 |
| 3 | * SUCTION FLANGE GASKET | 25113-040 | --- | 1 |
| NOT SHOWN: | | | | |
| | FUEL GAUGE GASKET | 38683-270 | 19060 | 1 |
| | SINGLE FLOAT SWITCH KIT | 48312-980 | --- | 1 |
| OPTIONAL: | | | | |
| | DOUBLE FLOAT SWITCH KIT | 48312-981 | --- | 1 |
| | 12V BATTERY | 29331-506 | --- | 1 |
| | WHEEL KIT | GRP30-253 | --- | 1 |

* INDICATES PARTS RECOMMENDED FOR STOCK

THE GORMAN-RUPP COMPANY • MANSFIELD, OHIO

GORMAN-RUPP OF CANADA LIMITED • ST. THOMAS, ONTARIO, CANADA Printed in U.S.A.



THE GORMAN-RUPP COMPANY • MANSFIELD, OHIO

GORMAN-RUPP OF CANADA LIMITED • ST. THOMAS, ONTARIO, CANADA

Printed in U.S.A.

S/N 1282499 Up
PUMP ISSUE 2

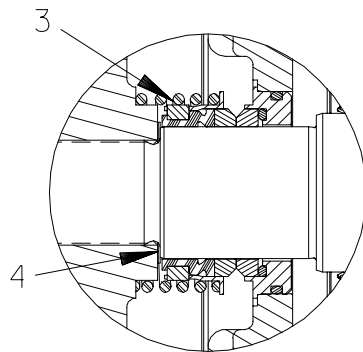
PARTS LIST
PA10A60-(SAE 3/11.5) Pump Model Assembly

| ITEM NO. | PART NAME | PART NUMBER | MAT'L CODE | QTY |
|----------|----------------------|---------------------|------------|-----|
| 1 | PUMP END ASSY | 610N60-(SAE 3/11.5) | | 1 |
| 2 | PRIMING CHAMBER ASSY | 46112-707 | --- | 1 |
| 3 | VALMATIC CHECK VALVE | 26642-127 | --- | 1 |
| 4 | * GASKET | 25113-040 | --- | 1 |
| 5 | HEX HD CAPSCREW | B1414 | 15991 | 12 |
| 6 | HEX NUT | D14 | 15991 | 12 |
| 7 | LOCKWASHER | J14 | 15991 | 12 |
| 8 | SUCTION SPOOL | 38642-615 | 10000 | 1 |
| 9 | HEX HD CAPSCREW | B1414 | 15991 | 12 |
| 10 | HEX NUT | D14 | 15991 | 12 |
| 11 | LOCKWASHER | J14 | 15991 | 12 |
| 12 | WASHER | 21161-450 | --- | 12 |
| 13 | * GASKET | 25113-040 | --- | 1 |
| 14 | BLIND FLANGE ASSY | 42111-358 | --- | 1 |
| 15 | * FLANGE GASKET | 25113-034 | --- | 1 |
| 16 | HEX HD CAPSCREW | B1007 | 15991 | 8 |
| 17 | LOCK WASHER | J10 | 15991 | 8 |
| 18 | * GASKET | 38687-053 | 19060 | 1 |
| 19 | BAFFLE | 31113-011 | 17000 | 1 |
| 20 | HEX HD CAPSCREW | B0807 | 15991 | 4 |
| 21 | LOCK WASHER | J08 | 15991 | 4 |

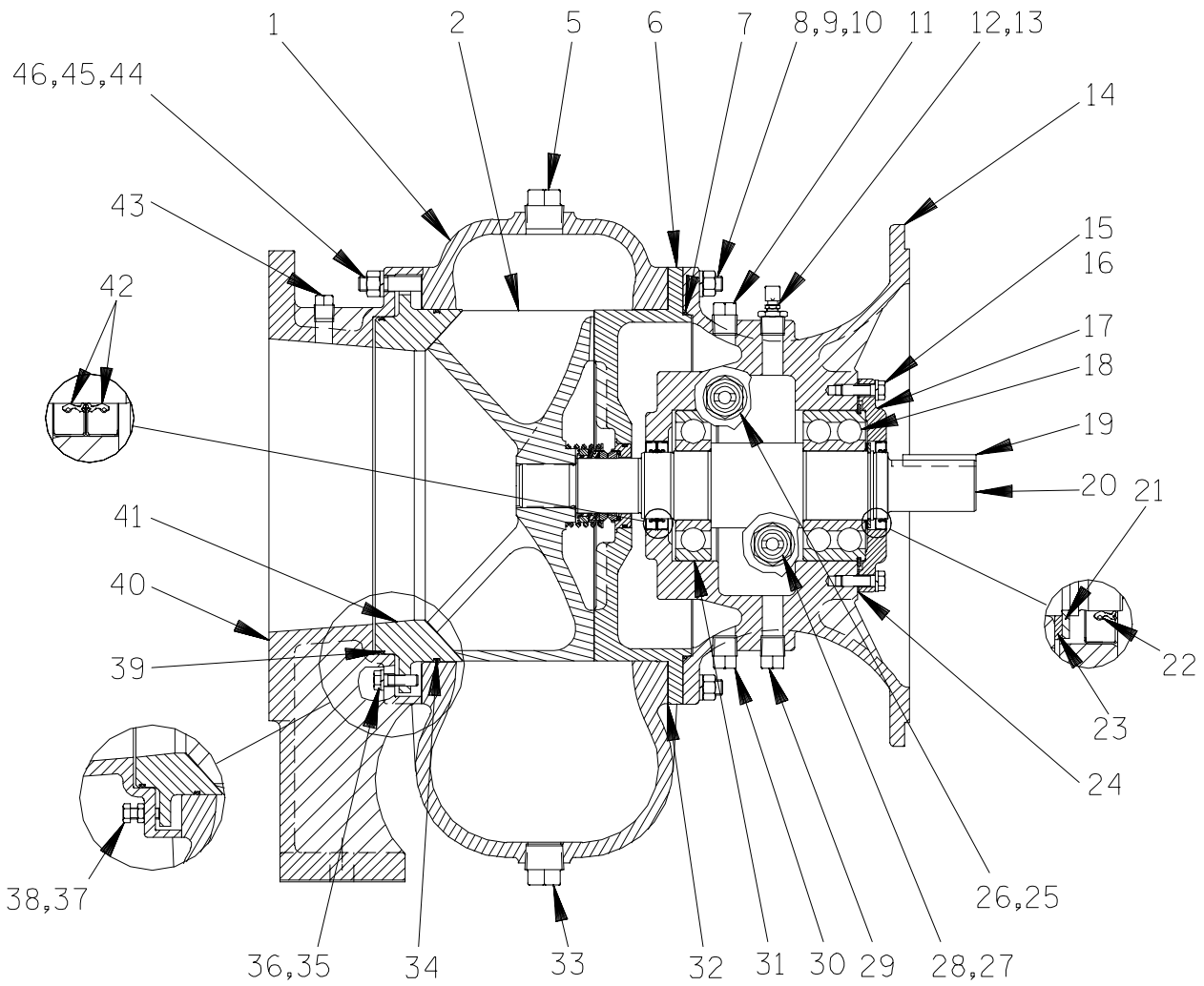
* INDICATES PARTS RECOMMENDED FOR STOCK

THE GORMAN-RUPP COMPANY • MANSFIELD, OHIO

GORMAN-RUPP OF CANADA LIMITED • ST. THOMAS, ONTARIO, CANADA Printed in U.S.A.



SEAL AREA DETAIL



THE GORMAN-RUPP COMPANY • MANSFIELD, OHIO

GORMAN-RUPP OF CANADA LIMITED • ST. THOMAS, ONTARIO, CANADA

Printed in U.S.A.

May 24, 2004

©Copyright by the Gorman-Rupp Company

4 of 7

Page 64.10 A20

S/N 1282499 Up
PUMP ISSUE 2

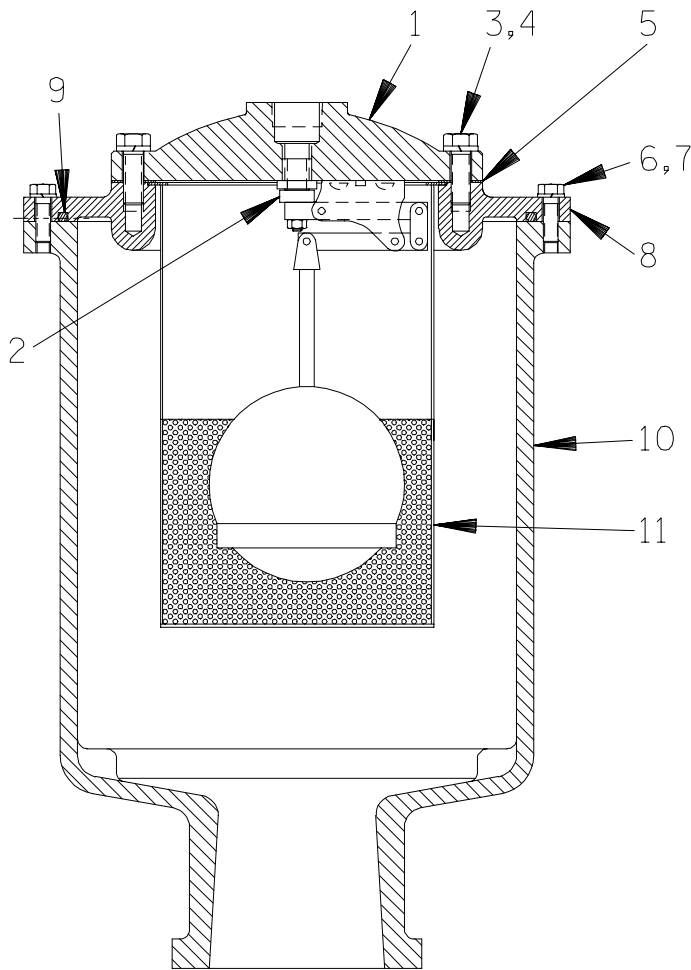
PARTS LIST
610N60-(SAE 3/11.5) Pump End Assembly

| ITEM NO. | PART NAME | PART NUMBER | MAT'L CODE | QTY | ITEM NO. | PART NAME | PART NUMBER | MAT'L CODE | QTY |
|----------|----------------------|-------------|------------|-----|------------|----------------------|-------------|------------|-----|
| 1 | PUMP CASING | 3197 | 10010 | 1 | 31 * | BALL BEARING | S1911 | --- | 1 |
| 2 * | IMPELLER | 38615-091 | 11010 | 1 | 32 * | SEAL PLATE GSKT | 3200G | 18000 | 1 |
| 3 * | SEAL ASSY | 46512-048 | --- | 1 | 33 | CASING DRAIN PLUG | P16 | 10009 | 1 |
| 4 | IMP ADJ SHIM SET | 5091 | 17090 | 1 | 34 * | WEAR RING O-RING | 25152-277 | --- | 1 |
| 5 | PIPE PLUG | P16 | 10009 | 5 | 35 | HEX HD CAPSCREW | B0605 | 15991 | 4 |
| 6 | SEAL PLATE | 38272-716 | 10000 | 1 | 36 | LOCKWASHER | J06 | 15991 | 4 |
| 7 * | CASING O-RING | 25152-276 | --- | 1 | 37 | HEX HD CAPSCREW | B0604 | 15991 | 4 |
| 8 | STUD | C0810 | 15991 | 12 | 38 | JAM NUT | AT06 | 15991 | 4 |
| 9 | HEX NUT | D08 | 15991 | 12 | 39 * | WEAR RING O-RING | 25152-276 | --- | 1 |
| 10 | LOCKWASHER | J08 | 15991 | 12 | 40 | SUCTION HEAD | 38248-506 | 10000 | 1 |
| 11 | VENTED PLUG | 4823A | 15079 | 1 | 41 * | WEAR RING | 38691-634 | 11010 | 1 |
| 12 | RED PIPE BUSHING | AP0802 | 15079 | 1 | 42 * | OIL SEAL | 25258-725 | --- | 2 |
| 13 | AIR VENT | S1530 | --- | 1 | 43 | PIPE PLUG | P06 | 15079 | 1 |
| 14 | INTERMEDIATE | 38264-705 | 10000 | 1 | 44 | STUD | C0811 | 15991 | 12 |
| 15 | HEX HD CAPSCREW | B0605 | 15991 | 6 | 45 | HEX NUT | D08 | 15991 | 12 |
| 16 | LOCKWASHER | J06 | 15991 | 6 | 46 | LOCKWASHER | J08 | 15991 | 12 |
| 17 | BEARING COVER | 38322-432 | 10000 | 1 | NOT SHOWN: | | | | |
| 18 * | BALL BEARING | 23422-413 | --- | 1 | | LUBE DECAL | 11421A | --- | 1 |
| 19 * | SHAFT KEY | N0610 | 15990 | 1 | | SUCTION DECAL | 6588AG | --- | 1 |
| 20 * | IMPELLER SHAFT | 38512-524 | 1706H | 1 | | DISCHARGE STICKER | 6588BJ | --- | 1 |
| 21 | RETAINING RING | 24124-052 | --- | 1 | | 60 SERIES NAME PLATE | 38818-127 | 13000 | 1 |
| 22 * | OIL SEAL | 25258-725 | --- | 1 | | PA SERIES NAME PLATE | 2613D | 13990 | 1 |
| 23 | THRUST WASHER | 31134-114 | 15000 | 1 | | DRIVE SCREW | BM#04-03 | 17000 | 4 |
| 24 * | BRG COVER GASKET | 38683-475 | 18000 | 1 | | INTER GUARD | 42381-031 | 24152 | 2 |
| 25 | SIGHT GAUGE | S1471 | --- | 1 | | DRIVE ASSY | 44162-157 | --- | 1 |
| 26 | PIPE PLUG | P12 | 15079 | 1 | | HEX HX CAPSCREW | B0604 | 15991 | 2 |
| 27 | SIGHT GAUGE | S1471 | --- | 1 | | PIPE PLUG | P04 | 15079 | 1 |
| 28 | PIPE PLUG | P12 | 15079 | 1 | OPTIONAL: | | | | |
| 29 | BRG CVTY DRAIN PLUG | P08 | 15079 | 1 | | ADI IMPELLER | 38615-091 | 1102H | 1 |
| 30 | SEAL CVTY DRAIN PLUG | P08 | 15079 | 1 | | | | | |

* INDICATES PARTS RECOMMENDED FOR STOCK

THE GORMAN-RUPP COMPANY • MANSFIELD, OHIO

GORMAN-RUPP OF CANADA LIMITED • ST. THOMAS, ONTARIO, CANADA Printed in U.S.A.



PARTS LIST
46112-707 Priming Chamber Assembly

| ITEM NO. | PART NAME | PART NUMBER | MAT'L CODE | QTY |
|----------|----------------------|-------------|------------|-------|
| 1 | PRIMING VALVE | 26664-007 | --- | 1 |
| 2 | ORIFICE BUTTON | 26688-021 | --- | REF |
| 3 | HEX HD CAPSCREW | B0806 | 15991 | 8 |
| 4 | LOCK WASHER | J08 | 15991 | 8 |
| 5 | * PRIMING VALVE GSKT | 38683-657 | 19060 | 1 |
| 6 | HEX HD CAPSCREW | B0605 | 15991 | 12 |
| 7 | LOCK WASHER | J06 | 15991 | 12 |
| 8 | PRIMING CHAMBER LID | 38346-618 | 10000 | 1 |
| 9 | * LINEAR O-RING | 18512-056 | --- | 3.86' |
| 10 | PRIMING CHAMBER | 38343-018 | 10000 | 1 |
| 11 | STRAINER ASSY | 46641-222 | 17000 | 1 |

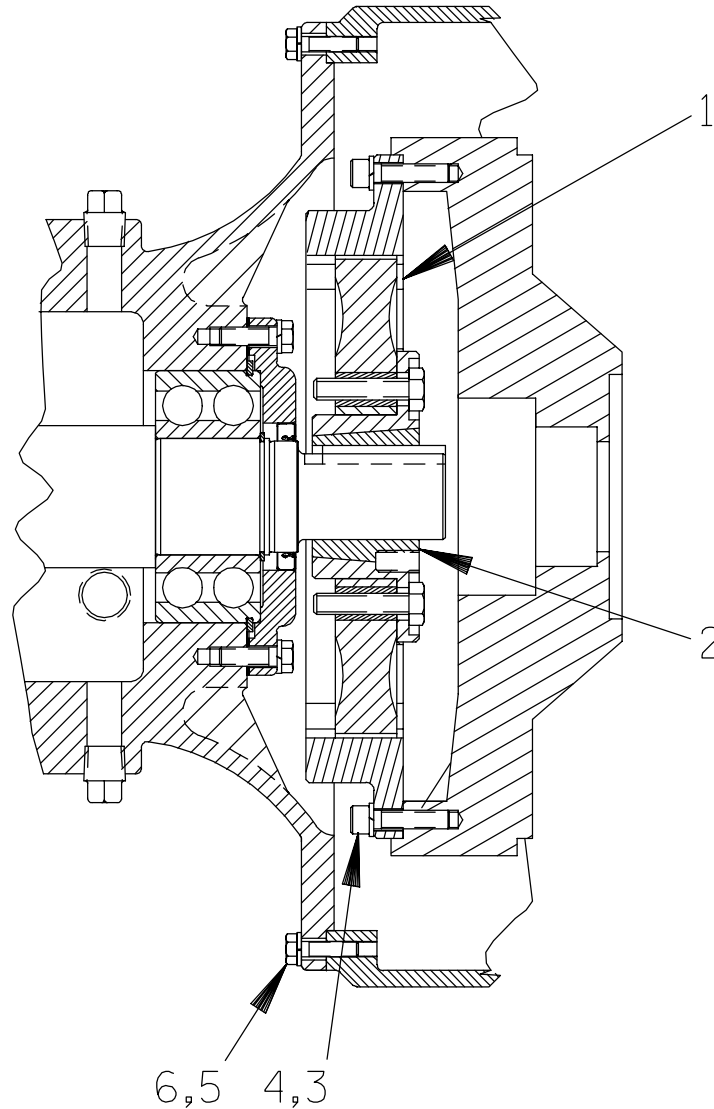
* INDICATES PARTS RECOMMENDED FOR STOCK

THE GORMAN-RUPP COMPANY • MANSFIELD, OHIO

GORMAN-RUPP OF CANADA LIMITED • ST. THOMAS, ONTARIO, CANADA

Printed in U.S.A.

S/N 1282499 Up
PUMP ISSUE 2



PARTS LIST
Drive Assembly

| ITEM NO. | PART NAME | PART NUMBER | MAT'L CODE | QTY |
|----------|----------------------|-------------|------------|-----|
| 1 | COUPLING W/O BUSHING | 24391-102 | --- | 1 |
| 2 | BUSHING | 24131-497 | --- | 1 |
| 3 | SOCKET HD CAPSCREW | BD0606 | 15990 | 8 |
| 4 | LOCKWASHER | J06 | 15991 | 8 |
| 5 | HEX HD CAPSCREW | B0605 | 15991 | 12 |
| 6 | LOCKWASHER | J06 | 15991 | 12 |

* INDICATES PARTS RECOMMENDED FOR STOCK

THE GORMAN-RUPP COMPANY • MANSFIELD, OHIO

GORMAN-RUPP OF CANADA LIMITED • ST. THOMAS, ONTARIO, CANADA Printed in U.S.A.

**For U.S. and International Warranty Information,
Please Visit www.grpumps.com/warranty
or call:
U.S.: 419-755-1280
International: +1-419-755-1352**

**For Canadian Warranty Information,
Please Visit www.grcanada.com/warranty
or call:
519-631-2870**