



***PRIME-AIRE<sup>®</sup> SERIES***  
**PUMP MODEL**  
**PA4A60-4045D**

**MANUAL**  
**PART 2 of 3**

**PARTS**  
**LIST**  
**WITH**  
**PERFORMANCE CURVE**

**THE GORMAN-RUPP COMPANY • MANSFIELD, OHIO**

GORMAN-RUPP OF CANADA LIMITED • ST. THOMAS, ONTARIO, CANADA Printed in U.S.A.

©Copyright by the Gorman-Rupp Company



**The engine exhaust from this product contains chemicals known to the State of California to cause cancer, birth defects or other reproductive harm.**

## PERFORMANCE CURVE – SECTION A

### RECORDING MODEL AND SERIAL NUMBERS

Please record the pump model and serial number in the spaces provided below and in the separate Installation/Operation Manual accompanying your pump. Your Gorman-Rupp distributor needs this information when you require parts or service.

Pump Model: \_\_\_\_\_

Serial Number: \_\_\_\_\_

### WARRANTY INFORMATION

The pump warranty is provided as part of Gorman-Rupp's support program for customers who operate and maintain their equipment as described in this manual and other accompanying literature. Please note that should the equipment be abused or modified to change its performance beyond the original factory specifications, the warranty will become void and any claim will be denied.

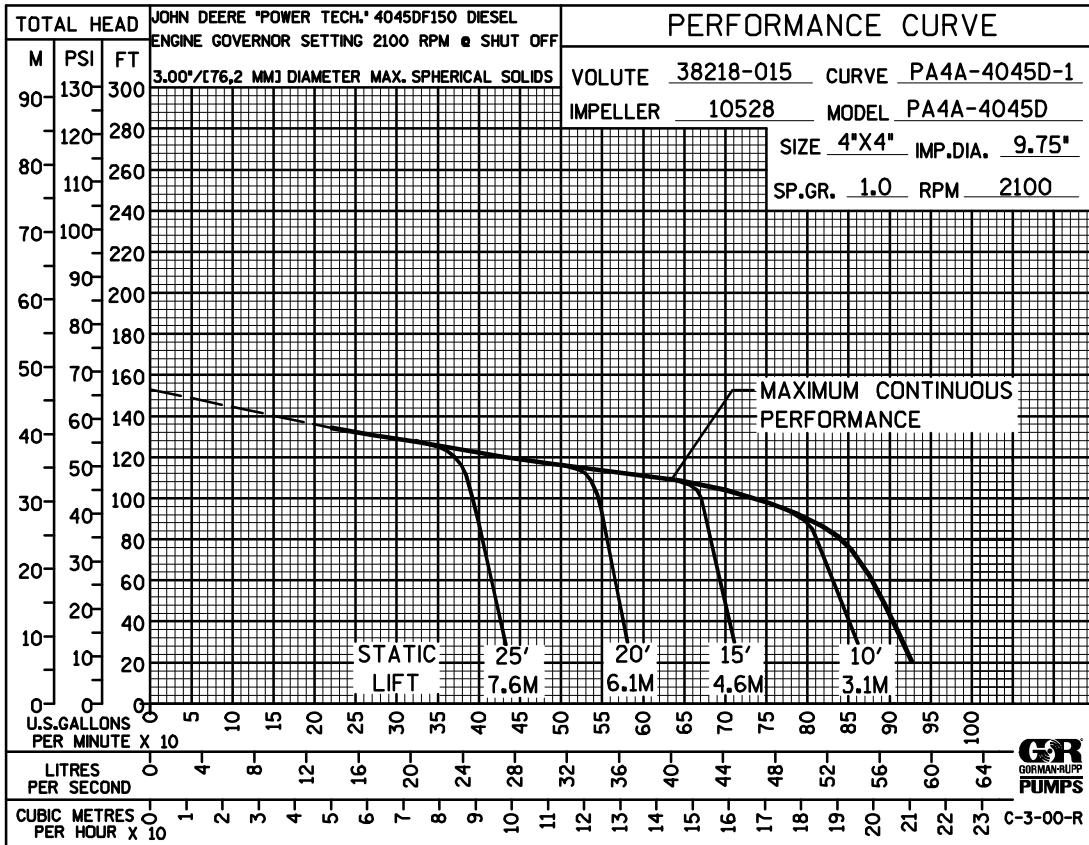
### PERFORMANCE CURVE

The performance curve on the following page is based on 70° F (21° C) clear water at sea level, corrected to 0.80 specific gravity, with minimum suction lift. Since pump installations are seldom identical, your performance may be different due to such factors as viscosity, specific gravity, elevation, temperature, and impeller trim.

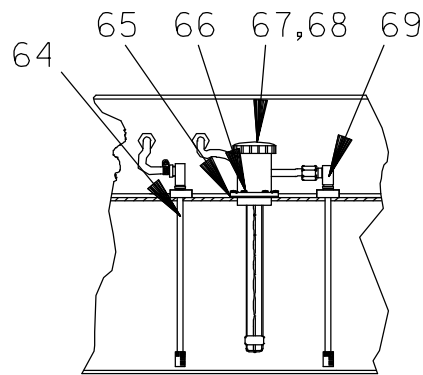
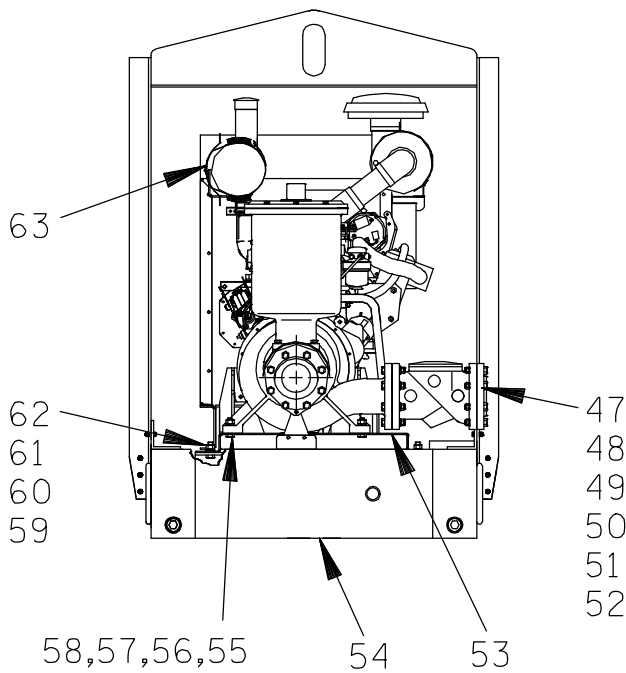
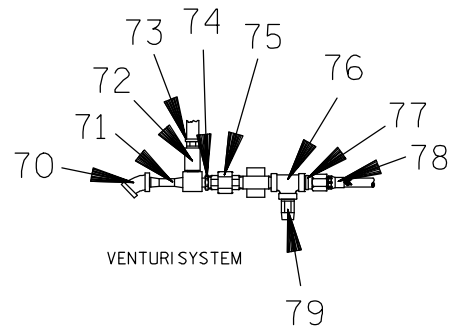
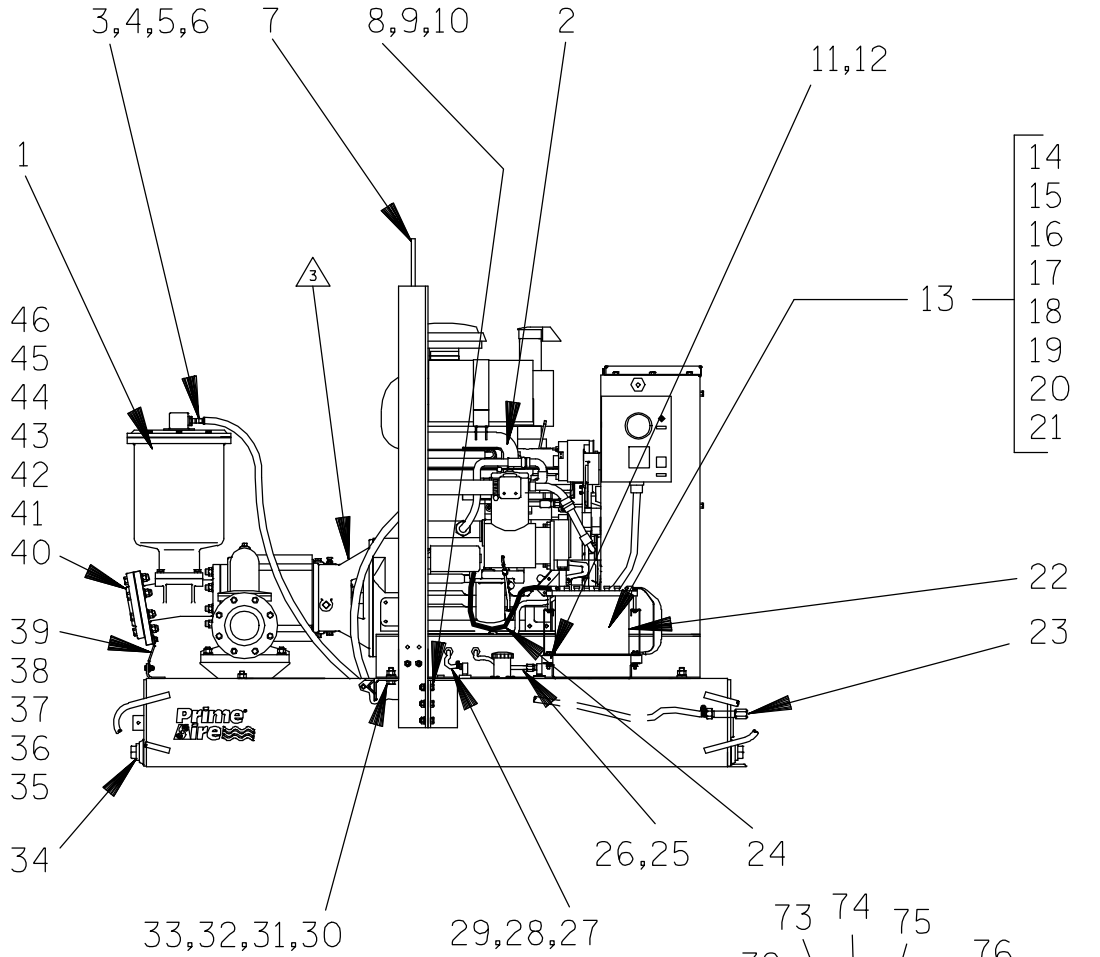
If your pump serial number is followed by an "N", your pump is **NOT** a standard production model. Contact the Gorman-Rupp Company to verify performance or part numbers.



Pump speed and operating condition points must be within the continuous performance range shown on the curve.



**This Page Intentionally Blank**



**THE GORMAN-RUPP COMPANY • MANSFIELD, OHIO**

GORMAN-RUPP OF CANADA LIMITED • ST. THOMAS, ONTARIO, CANADA

Printed in U.S.A.

1 of 11

S/N 122507 Up  
PUMP ISSUE 2

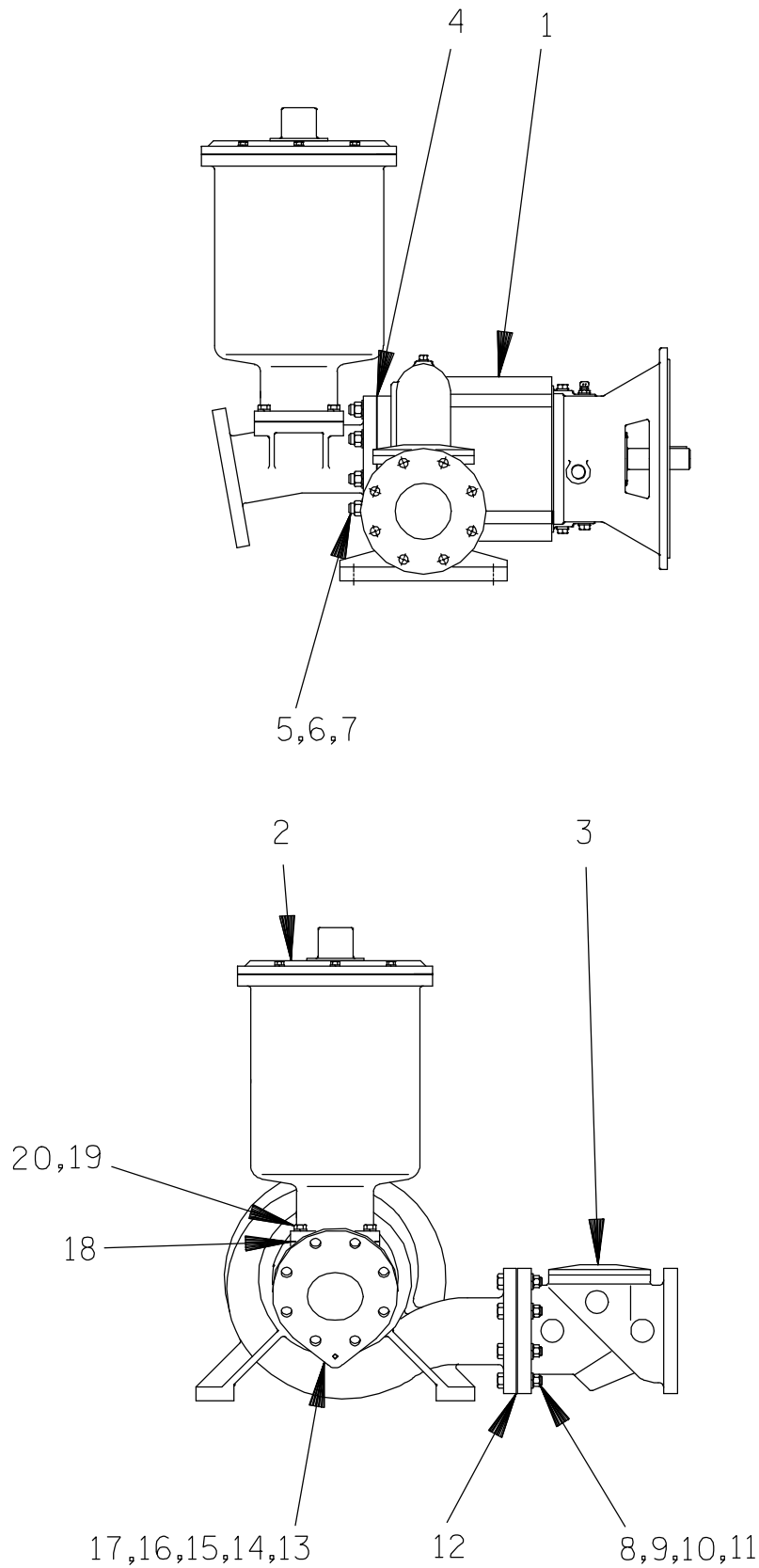
**PARTS LIST**  
**Pump Model PA4A60-4045D**

If your pump serial number is followed by an "N", your pump is **NOT** a standard production model. Contact the Gorman-Rupp Company to verify part numbers.

ITEM NO.	PART NAME	PART NUMBER	MAT'L CODE	QTY	ITEM NO.	PART NAME	PART NUMBER	MAT'L CODE	QTY
1	PUMP END ASSEMBLY	PA4A60-(SAE 4/10)		1	49	HEX HD CAPSCREW	B1011	15991	2
2	JD 4045DF150 ENG	29224-118	----	1	50	HEX HD CAPSCREW	B1012	15991	6
3	REDUCER BUSHING	AP1608	11999	1	51	LOCKWASHER	J10	15991	6
4	CONNECTOR	S1598	----	1	52	HEX NUT	D10	15991	8
5	HOSE BARB FITTING	26523-047	----	1	53	PUMP SUPPORT ASSY	41581-017	24150	1
6	3.92' HOSE .50 ID	18513-113	----	1	54	BASE/FUEL TANK	41553-002	24150	1
7	LIFTING BAIL	44713-029	24150	1	55	HEX HD CAPSCREW	B1009	15991	4
8	HEX HD CAPSCREW	B0805 1/2	15991	10	56	LOCKWASHER	J10	15991	4
9	LOCKWASHER	J08	15991	10	57	HEX NUT	D10	15991	4
10	HEX NUT	D08	15991	10	58	WASHER SAE 5/8	21161-442	----	4
11	STUD MOUNT	24631-006	----	4	59	HEX HD CAPSCREW	B1007	15991	2
12	FLANGED HEX NUT	21765-314	----	8	60	LOCKWASHER	J10	15991	2
13	BATTERY BOX ASSY	GRP40-02E	----	1	61	HEX NUT	D10	15991	2
14	-HEX HD CAPSCREW	B0612	15991	2	62	WASHER SAE 5/8	21161-442	----	4
15	-FLANGED HEX NUT	21765-314	----	2	63	MUFFLER GUARD ASSY	42331-040	----	1
16	-FLAT WASHER	KE06	15991	2	64	FUEL PICKUP	29332-145	----	1
17	-BATTERY TAG	38818-515	----	1	65 *	FILL NECK GSKT	38683-270	19060	1
18	-GRND CABLE ASSY	47311-064	----	1	66	HEX HD CAPSCREW	B#10-02S	15991	6
19	-BATTERY FRAME	8355B	24000	1	67	FUEL GAUGE	29332-135	----	1
20	-BATTERY BOX	34751-006	15120	1	68	FILL NECK ASSY	46312-017	24152	1
21	-T TYPE LOCKWASHER	BL06	15991	1	69	FUEL PICKUP	29332-145	----	1
22	BATTERY	SEE OPTIONS			70	PIPE ELBOW	AG08	11999	1
23	OIL DRAIN ASSY	46342-022	----	1	71	VENTURI	26817-002	----	1
24	CABLE ASSY	47311-106	----	1	72	PIPE COUPLING 1/2	AE08	15079	1
25	CONNECTOR	S1447	----	2	73	MALE HOSE END	26525-020	----	1
26	HOSE ASSEMBLY	46341-789	----	1	74	RED PIPE BUSHING	AP0806	15079	1
27	HOSE BARB FITTING	26523-386	----	2	75	PIPE UNION	AH08	11999	1
28	FUEL LINE	11308	----	1	76	SERVICE TEE	U08	11999	1
29	HOSE CLAMP	26518-641	----	2	77	MALE ADAPTOR	26351-065	----	2
30	HEX HD CAPSCREW	B1007	15991	6	78	HOSE ASSEMBLY	46341-426	----	1
31	HEX NUT	D10	15991	6	79	PRESS RELIEF VALVE	26662-028	----	1
32	LOCKWASHER	J10	15991	6		NOT SHOWN:			
33	WASHER SAE 5/8	21161-442	----	6		INSTRUCTION DECAL	38818-128	----	1
34	PIPE PLUG	P32	10009	4		CAUTION DECAL	2613FJ	----	1
35	HEX HD CAPSCREW	B0605	15991	2		WARNING DECAL	38816-218	----	2
36	LOCKWASHER	J06	15991	2		PRIME-AIRE DECAL	38812-078	----	2
37	FLAT WASHER	K06	15991	2		WARNING DECAL	2613FE	----	1
38	HEX NUT	D06	15991	2		G-R 6" DECAL	GR-06	----	3
39	SPOOL SUPPORT BRKT	34535-013	15080	1		INSTRUCTION TAG	38817-009	----	1
40	HEX HD CAPSCREW	B0804	15991	1		ENG START-UP TAG	38816-269	----	1
41	LOCKWASHER	J08	15991	1		STRAINER	2690C	24000	1
42	FLANGE	1756	10010	1		WARNING DECAL	38816-175	----	2
43 *	FLANGE GASKET	1676G	18000	1		OPTIONS:			
44	HEX HD CAPSCREW	B1011	15991	8		BATTERY	29331-515	----	1
45	LOCKWASHER	J10	15991	8		WHEEL KIT	GRP30-252	----	1
46	HEX NUT	D10	15991	8					
47	CHECK VALVE FLANGE	1756	10010	1					
48 *	FLANGE GASKET	1676G	18000	1					

\* INDICATES PARTS RECOMMENDED FOR STOCK

**THE GORMAN-RUPP COMPANY • MANSFIELD, OHIO**



**THE GORMAN-RUPP COMPANY • MANSFIELD, OHIO**

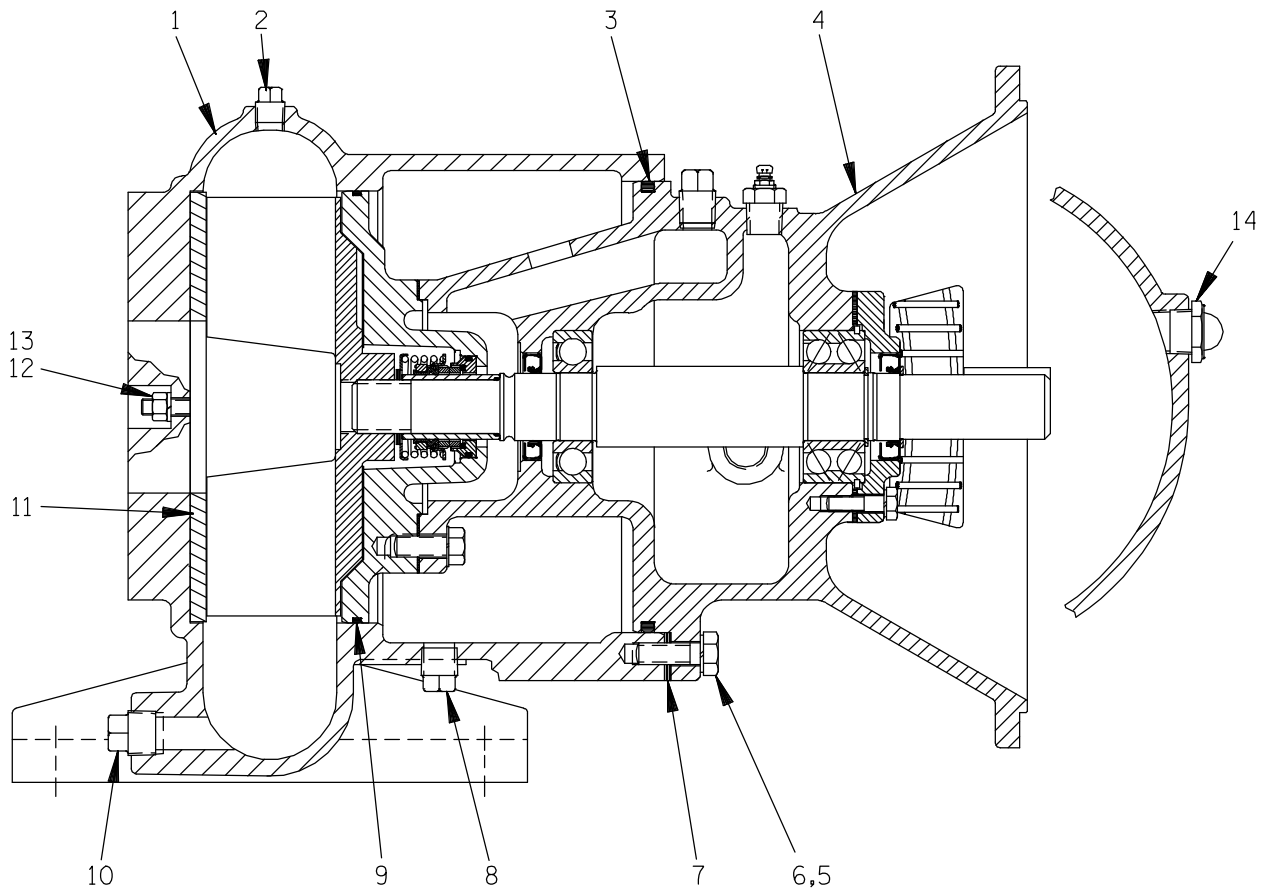


S/N 1225507 Up  
PUMP ISSUE 2

**PARTS LIST**  
**PA4A60-(SAE 4/10) Pump Assembly**

ITEM NO.	PART NAME	PART NUMBER	MAT'L CODE	QTY
1	PUMP END ASSY	64C60-(SAE 4/10)	---	1
2	PRIMING CHAMBER ASSY	46112-704	---	1
3	CHECK VALVE ASSY	26642-124	---	1
	-FLAPPER	26688-005	---	1
	-COVER GASKET	26688-006	---	1
4	* PUMP CASING GSKT	1676G	18000	1
5	STUD	C1011	15991	8
6	HEX NUT	D10	15991	8
7	LOCKWASHER	J10	15991	8
8	HEX HD CAPSCREW	B1011	15991	2
9	HEX NUT	D10	15991	8
10	LOCKWASHER	J10	15991	6
11	HEX HD CAPSCREW	B1012	15991	6
12	* DISCHARGE FLANGE GSKT	1676G	18000	1
13	4" SPOOL FLANGE	38644-802	10000	1
14	COVER PLATE	38244-021	15080	1
15	* COVER PLATE GSKT	38689-037	18000	1
16	HEX HD CAPSCREW	B0804	15991	2
17	LOCKWASHER	J08	15991	2
18	* PRIMING CHAMBER GSKT	38687-053	19060	1
19	HEX HD CAPSCREW	B0807	15991	4
20	LOCKWASHER	J08	15991	4

\* INDICATES PARTS RECOMMENDED FOR STOCK



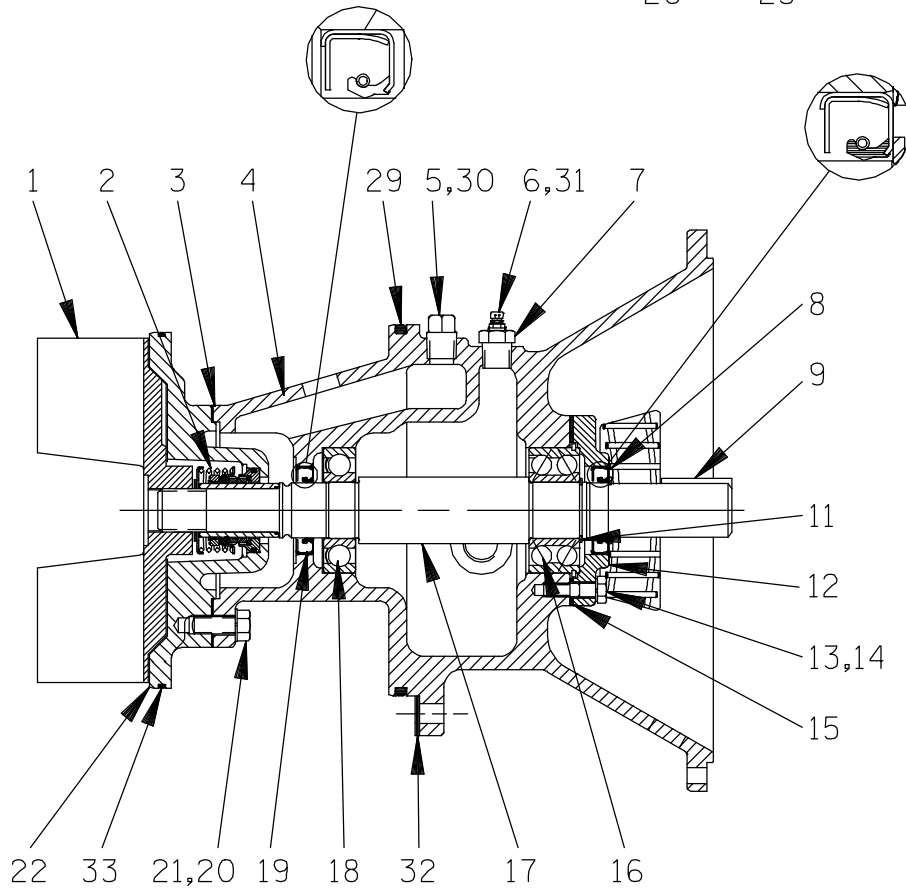
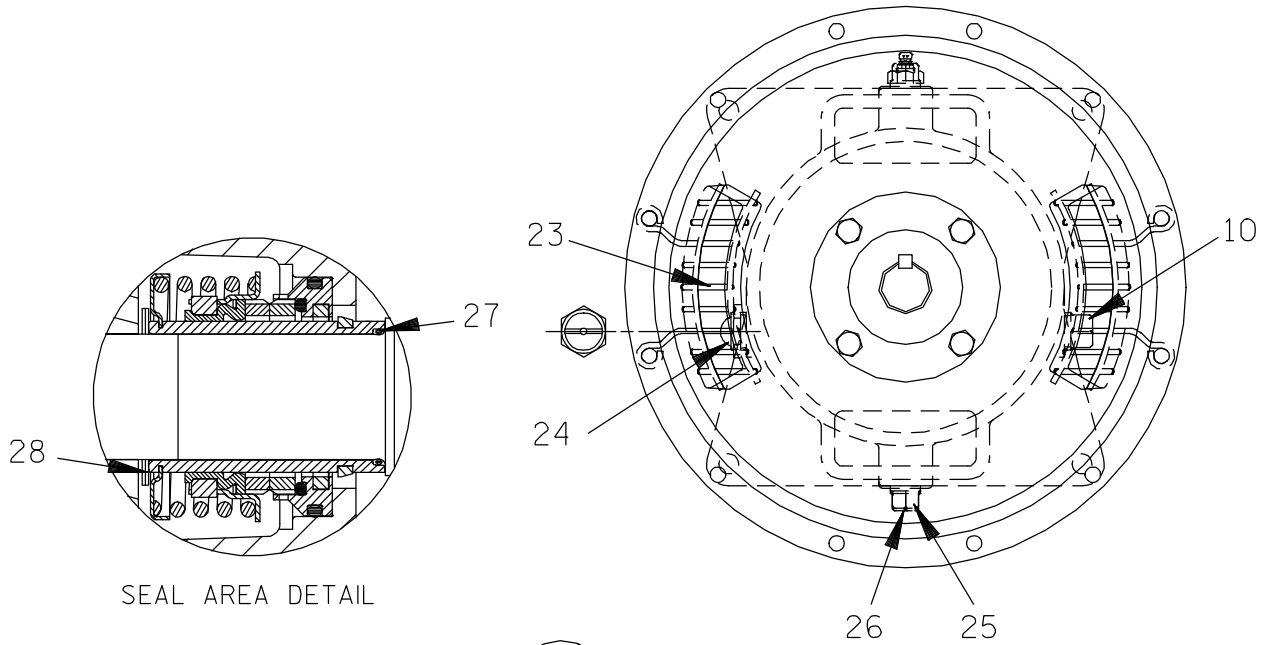
**THE GORMAN-RUPP COMPANY • MANSFIELD, OHIO**

S/N 1225507 Up  
PUMP ISSUE 2

**PARTS LIST**  
**64C60-(SAE 4/10) Pump End Assembly**

ITEM NO.	PART NAME	PART NUMBER	MAT'L CODE	QTY	ITEM NO.	PART NAME	PART NUMBER	MAT'L CODE	QTY
1	PUMP CASING	38218-015	10000	1	13	LOCKWASHER	J06	15991	2
2	PIPE PLUG	P06	15079	1	14	SIGHT GAUGE	S1471	----	1
3 *	INTERMEDIATE O-RING	S1674	----	1					
4	REPAIR ROTATING ASSY	44163-229	----	1		NOT SHOWN:			
5	HEX HD CAPSCREW	B0806	15991	4		NAME PLATE	38818-127	13000	1
6	LOCKWASHER	J08	15991	4		DRIVE SCREW	BM#04-03	17000	4
7 *	ROT ASSY SHIM SET	13130	17000	4		OIL LEVEL DECAL	38816-123	----	1
8	DRAIN PLUG	P08	15079	1		SUCTION STICKER	6588AG	----	1
9 *	SEAL PLATE O-RING	25154-273	----	1		DISCHARGE STICKER	6588BJ	----	1
10	CASING DRAIN PLUG	P12	15079	1		WARNING DECAL	2613FE	----	1
11 *	WEAR PLATE	10532B	15990	1		LUBE DECAL	38816-079	----	1
12	HEX NUT	D06	15991	2		DRIVE ASSY SAE 3/4-10	44162-119	----	1

\* INDICATES PARTS RECOMMENDED FOR STOCK



**THE GORMAN-RUPP COMPANY • MANSFIELD, OHIO**

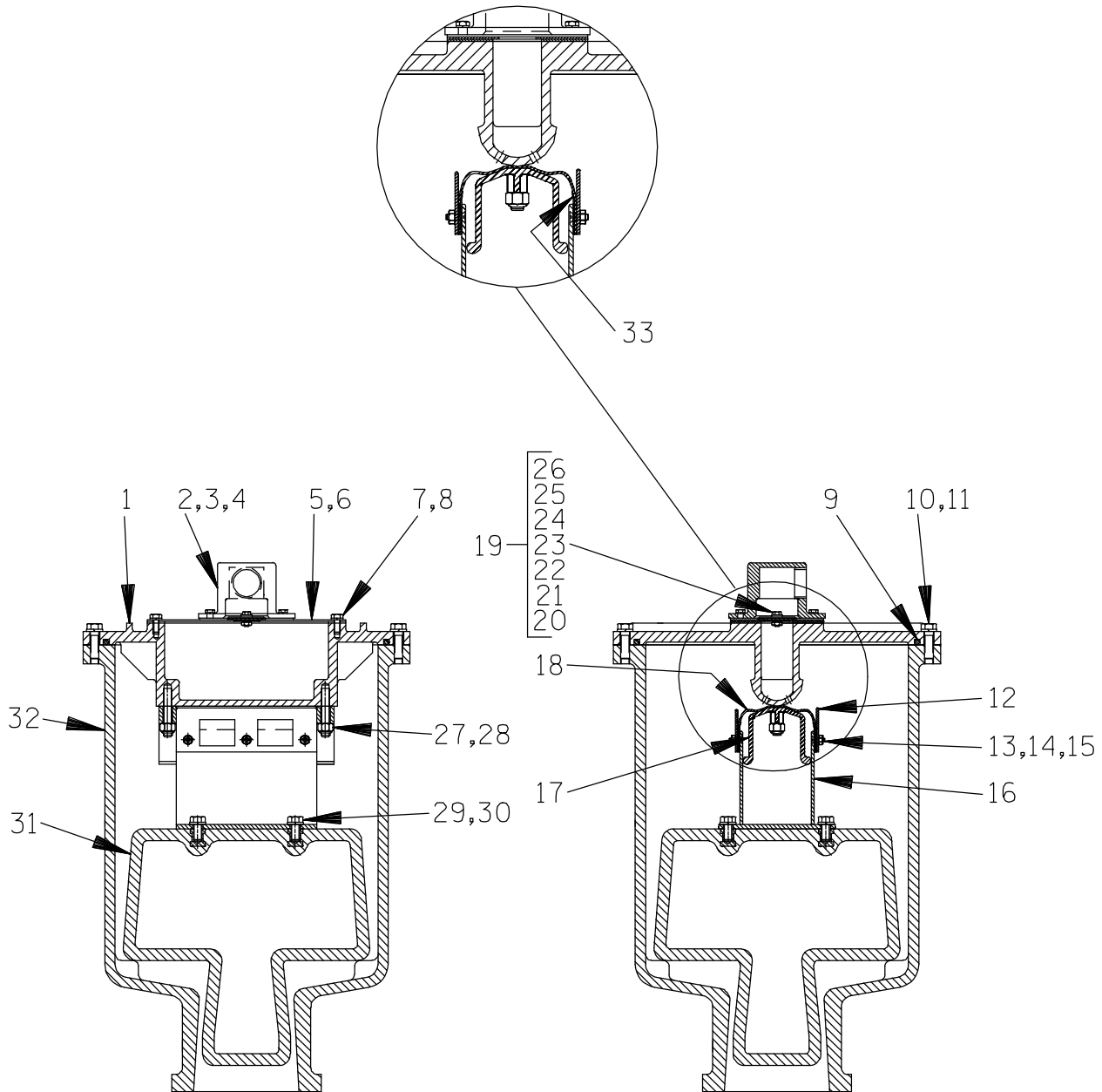
**S/N 1225507 Up  
PUMP ISSUE 2**

**PARTS LIST  
44163-229 REPAIR ROTATING ASSEMBLY**

ITEM NO.	PART NAME	PART NUMBER	MAT'L CODE	QTY	ITEM NO.	PART NAME	PART NUMBER	MAT'L CODE	QTY
1 *	IMPELLER	10528	11010	1	18 *	INNER BALL BEARING	23276-009	---	1
2 *	SEAL ASSY	46513-151	---	1	19 *	OIL SEAL	S1352	---	1
3 *	SEAL PLATE GSKT	10959G	20000	1	20	HEX HD CAPSCREW	B0805 1/2	15991	4
4	INTERMEDIATE BRACKET	38266-007	10000	1	21	LOCKWASHER	J08	15991	4
5	VENTED PLUG	4823A	15079	1	22	SEAL PLATE	38272-234	10010	1
6	AIR VENT	S1530	---	1	23	INTERM GUARD ASSY	42381-509	24152	2
7	REDUCER PIPE BUSHING	AP0802	15079	1	24	OIL LVL SIGHT GAUGE	S1471	---	1
8 *	OIL SEAL	S1352	---	1	25	INTERM DRAIN PLUG	P08	15079	1
9 *	SHAFT KEY	N0610	15990	1	26	SEAL CVTY DRAIN PLUG	P08	15079	1
10	PIPE PLUG	P12	15079	1	27 *	SHAFT SLEEVE O-RING	25154-022	---	REF
11	BRG SNAP RING	S244	---	1	28 *	IMPELLER ADJ SHIM SET	37J	17090	REF
12	BEARING CAP	38322-215	10010	1	29 *	INTERMEDIATE O-RING	S1674	---	1
13	HEX HD CAPSCREW	B0605	15991	4	30	SHIPPING PLUG	11495B	15079	1
14	LOCKWASHER	J06	15991	4	31	SHIPPING PLUG	11495B	15079	1
15 *	BEARING CAP GSKT	38683-248	18000	1	32 *	ROT ASSY ADJ SHIM SET	13130	17000	4
16 *	OUTER BALL BEARING	S1040	---	1	33 *	SEAL PLATE O-RING	25154-273	---	1
17 *	IMPELLER SHAFT	38514-561	1706H	1					

\* INDICATES PARTS RECOMMENDED FOR STOCK

VALVE DETAIL

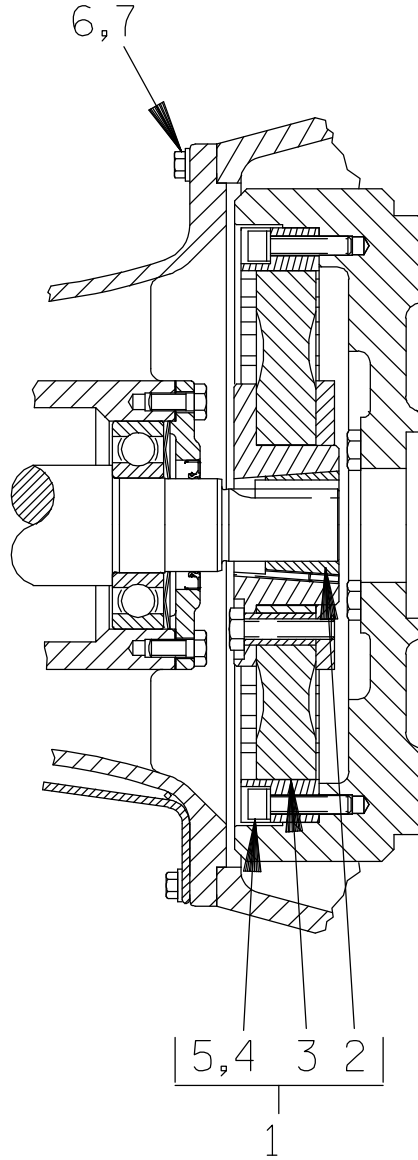


S/N 1225507 Up  
PUMP ISSUE 2

**PARTS LIST**  
**46112-704 Peeler Type Priming Valve**

ITEM NO.	PART NAME	PART NUMBER	MAT'L CODE	QTY	ITEM NO.	PART NAME	PART NUMBER	MAT'L CODE	QTY
1	PRIMING CHAMBER LID	38346-615	1300U	1	18	VALVE STRAP	33276-041	19410	1
2	PEELER VALVE NECK	38349-413	10000	1	19	CHECK VALVE ASSY	46411-112	---	1
3	HEX HD CAPSCREW	B0403 1/2	15991	4	20 *	-CHECK VALVE	38671-413	19020	1
4	LOCKWASHER	J04	15991	4	21	-LOCKWASHER	J#10	17000	1
5 *	VALVE PLATE GSKT	38687-555	19060	1	22	-HEX NUT	D#10	17000	1
6	VALVE PLATE	33541-040	17000	1	23	-FLATWASHER	21161-810	---	1
7	HEX HD CAPSCREW	B0402 1/2	15991	4	24	-HEX HD CAPSCREW	B#10-02	17000	1
8	LOCKWASHER	J04	15991	4	25	-FLATWASHER	21161-811	---	1
9 *	LINEAR O-RING .25 X 3.9'	18512-056	---	1	26	-SEALING WASHER	25123-056	---	1
10	HEX HD CAPSCREW	B0605	15991	12	27	STUD	C0607	17000	2
11	LOCKWASHER	J06	15991	12	28	HEX LOCK NUT	DD06	17000	2
12	GUIDE PLATE	33522-009	17000	2	29	HEX HD CAPSCREW	B0604	17000	4
13	FLAT HD CAPSCREW	F#10-03	17000	6	30	LOCKWASHER	J06	17000	4
14	LOCKWASHER	J#10	17000	6	31	FLAT WASHER	KB06	17000	8
15	HEX NUT	D#10	17000	6	32 *	PRIMING VALVE FLOAT	38349-412	19220	1
16	VLV STRAP BRKT ASSY	41881-597	2415X	1	33	PRIMING CHAMBER	38343-018	10000	1
17	CLAMP PLATE	38349-411	14000	1	34	VLV STRAP PROTECTOR	33271-019	19000	2

\* INDICATES PARTS RECOMMENDED FOR STOCK



**Drive Assembly**

ITEM NO.	PART NAME	PART NUMBER	MAT'L CODE	QTY
1	COUPLING KIT	48112-001	---	1
2	-BUSHING	24131-345	---	1
3	-COUPLING ASSY	44165-011	---	1
4	-LOCKWASHER	21171-536	---	8
5	-SOCKET HD CAPSCREW	BD0606 1/2	15991	8
6	HEX HD CAPSCREW	B0605	15991	12
7	LOCKWASHER	J06	15991	12



**For U.S. and International Warranty Information,  
Please Visit [www.grpumps.com/warranty](http://www.grpumps.com/warranty)**

**or call:**

**U.S.: 419-755-1280**

**International: +1-419-755-1352**

**For Canadian Warranty Information,  
Please Visit [www.grcanada.com/warranty](http://www.grcanada.com/warranty)**

**or call:**

**519-631-2870**