

ACDE

Use With: OM-04760
MR-04959

PUBLICATION NUMBER PL-04974-02
February 17, 1999
Rev. A 01-31-14



**PUMP MODEL
16D2-F3L 1011**

**MANUAL
PART 2 of 3**

**PARTS
LIST
WITH
PERFORMANCE CURVE**

THE GORMAN-RUPP COMPANY • MANSFIELD, OHIO

GORMAN-RUPP OF CANADA LIMITED • ST. THOMAS, ONTARIO, CANADA Printed in U.S.A.

©Copyright by the Gorman-Rupp Company



The engine exhaust from this product contains chemicals known to the State of California to cause cancer, birth defects or other reproductive harm.

PERFORMANCE CURVE – SECTION A

RECORDING MODEL AND SERIAL NUMBERS

Please record the pump model and serial number in the spaces provided below and in the separate Installation/Operation Manual accompanying your pump. Your Gorman-Rupp distributor needs this information when you require parts or service.

Pump Model: _____

Serial Number: _____

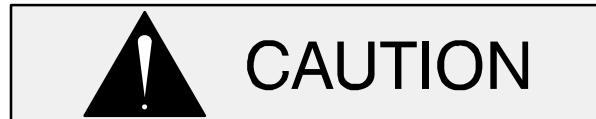
WARRANTY INFORMATION

The pump warranty is provided as part of Gorman-Rupp's support program for customers who operate and maintain their equipment as described in this manual and other accompanying literature. Please note that should the equipment be abused or modified to change its performance beyond the original factory specifications, the warranty will become void and any claim will be denied.

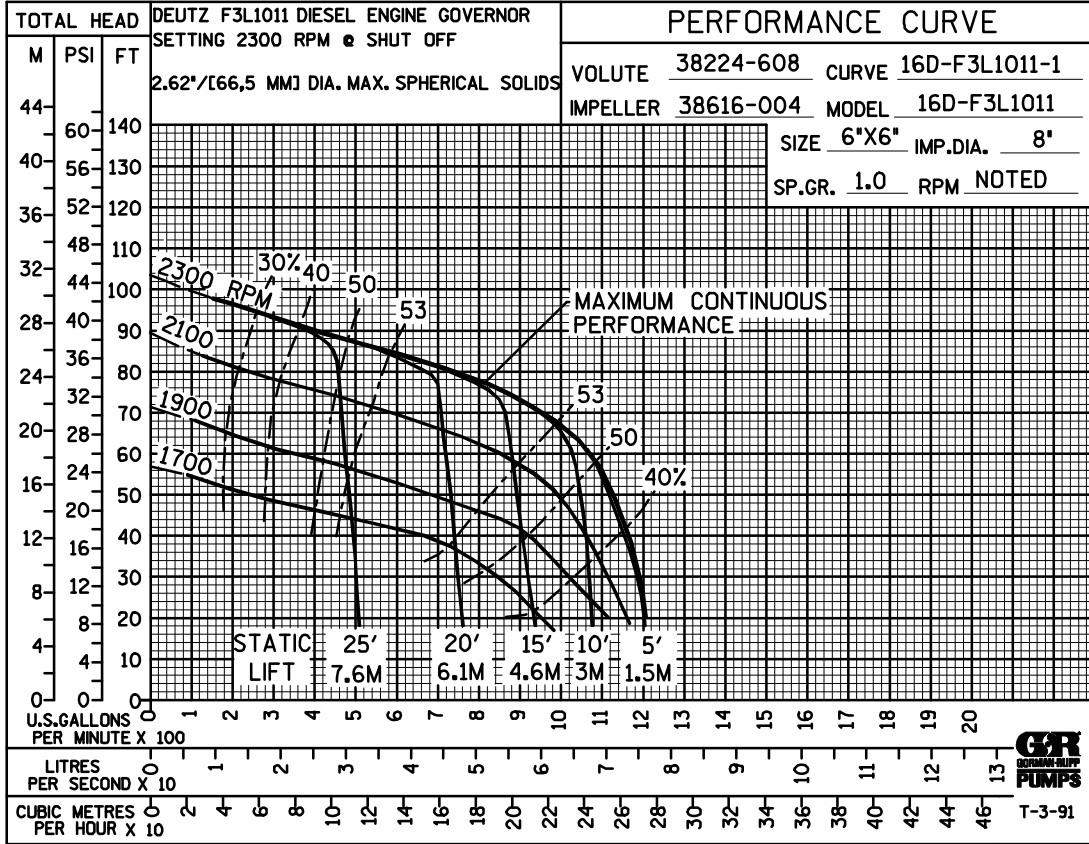
PERFORMANCE CURVES

The performance curve on the following page is based on 70°F (21°C) clear water at sea level. Since pump installations are seldom identical, your performance may be different due to such factors as viscosity, specific gravity, elevation, temperature, and impeller trim.

If your pump serial number is followed by an "N", your pump is **NOT** a standard production model. Contact the Gorman-Rupp Company to verify performance or part numbers.



Pump speed and operating condition points must be within the continuous performance range shown on the curve(s).



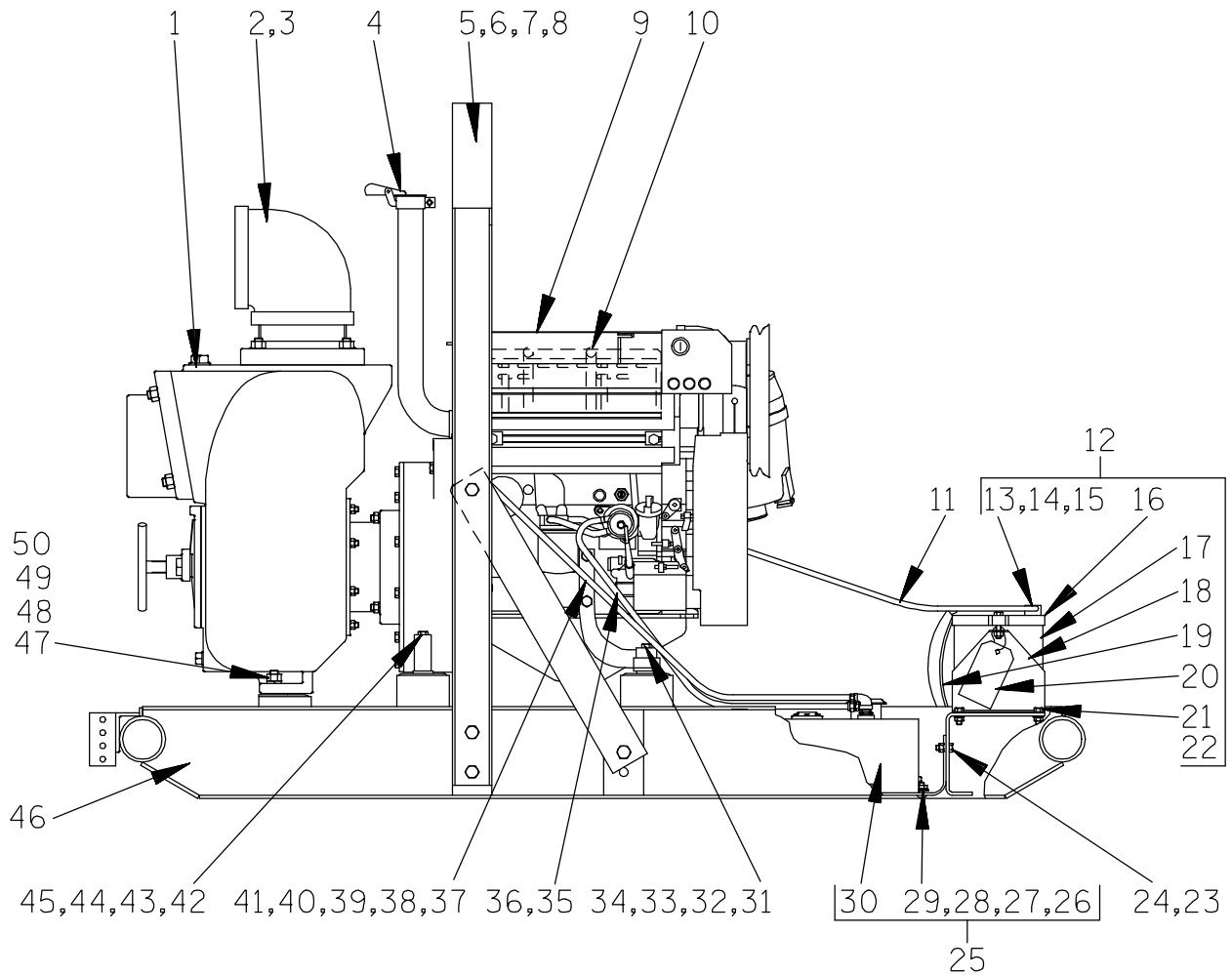
Performance Curve – Model 16D2–F3L 1011

This Page Intentionally Blank

16D2-F3L 1011

S/N 1237231 UP

PUMP ISSUE 2



THE GORMAN-RUPP COMPANY • MANSFIELD, OHIO

GORMAN-RUPP OF CANADA LIMITED • ST. THOMAS, ONTARIO, CANADA Printed in U.S.A.

©Copyright by the Gorman-Rupp Company

If your pump serial number is followed by an "N", your pump is NOT a standard production model. Contact the Gorman-Rupp Company to verify part numbers.

ITEM NO.	PART NAME	PART NUMBER	MAT'L CODE	QTY	ITEM NO.	PART NAME	PART NUMBER	MAT'L CODE	QTY
1	PUMP END ASSY	16D2	----	1	31	HEX HD CAPSCREW	B0712	15991	2
2	PIPE ELBOW	R96	11990	1	32	LOCKWASHER	J07	15991	2
3	PIPE NIPPLE	T96	15070	1	33	FLAT WASHER	K07	15991	2
4	WEATHER CAP	S1331	----	1	34	HEX NUT	D07	15991	2
5	HOIST BAIL	13351BJ	24000	1	35	FUEL LINE ASSY	46341-795	----	1
6	HEX HD CAPSCREW	B1006	15991	8	36	HOSE CLAMP	26518-641	----	1
7	LOCKWASHER	J10	15991	8	37	FUEL RETURN ASSY	14294	24030	1
8	HEX NUT	D10	15991	8	38	REDUCER ELBOW	Q0402	11999	1
9	DEUTZ F3L 1011 ENGINE	29217-033	----	1	39	MALE CONN BARB	26523-382	----	1
10	MUFFLER GUARD ASSY	42331-039	----	1	40	HOSE CLAMP	26518-641	----	2
11	1/0 CABLE ASSY	47311-114	----	1	41	FUEL LINE .19 X 45	11308A	----	1
12	BATTERY BOX ASSY	GRP40-02C	----	1	42	HEX HD CAPSCREW	B0716	15991	2
13	-HEX HD CAPSCREW	B06012	15991	2	43	LOCKWASHER	J07	15991	2
14	-FLANGED HEX NUT	21765-314	----	2	44	FLAT WASHER	K07	15991	2
15	-FLAT WASHER	K06	15991	2	45	HEX NUT	D07	15991	2
16	-BATTERY FRAME	8355B	24000	1	46	COMBINATION BASE	41566-695	24150	1
17 *	-12V BATTERY	SEE OPTIONS		1	47	FLAT WASHER	K10	15991	4
18	-BATTERY BOX	8356B	24000	1	48	HEX HD CAPSCREW	B1009	15991	4
19	-GRD CABLE ASSY	5795AC	24040	1	49	LOCKWASHER	J10	15991	4
20	-BATTERY TAG	38818-338	----	1	50	HEX NUT	D10	15991	4
21	-HEX HD CAPSCREW	B0604	15991	4		NOT SHOWN:			
22	-FLANGED HEX NUT	21765-314	----	4		STRAINER	7823	24000	1
23	HEX HD CAPSCREW	B0604	15991	6		OPTIONS:			
24	FLANGED HEX NUT	21765-314	15991	6		WHEEL KIT	GRP30-248	----	1
25	FUEL TANK & GRD ASSY	46711-063	----	1		* 12V BATTERY	S1338	----	1
26	-FLANGED HEX NUT	21765-314	-----	6		DISCHARGE FLANGE	38641-525	10000	1
27	-FLAT WASHER	K06	15991	6		REP MUFFLER GRD ASSY	42331-053	----	1
28	-TANK GUARD	34874-054	15120	1					
29	-CARRIAGE BOLT	AB0604	15991	6					
30	-FUEL TANK	46711-064	24150	1					

* INDICATES PARTS RECOMMENDED FOR STOCK

THE GORMAN-RUPP COMPANY • MANSFIELD, OHIO

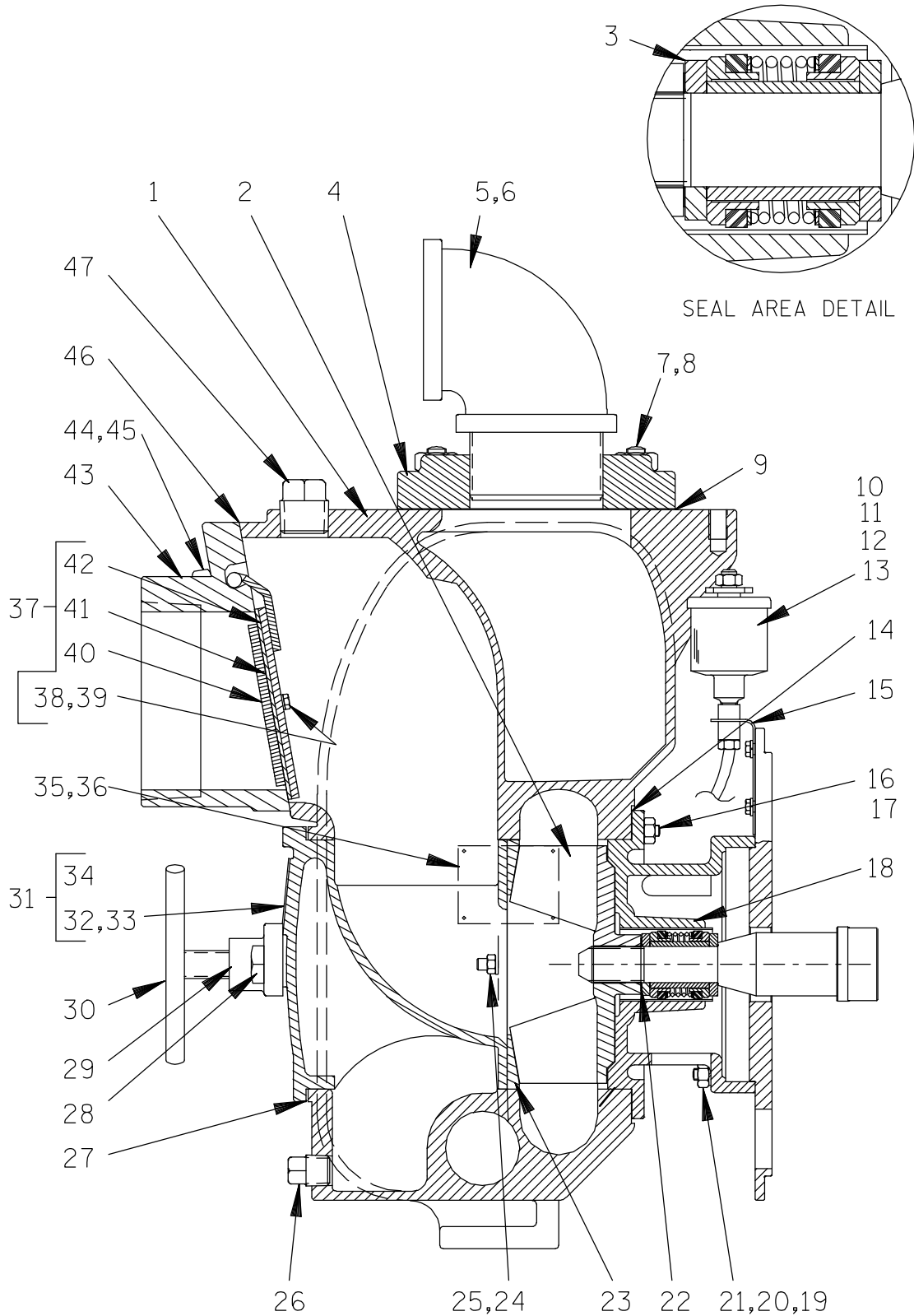
GORMAN-RUPP OF CANADA LIMITED • ST. THOMAS, ONTARIO, CANADA Printed in U.S.A.

©Copyright by the Gorman-Rupp Company

16D2-F3L 1011

S/N 1237231 UP

PUMP ISSUE 2



THE GORMAN-RUPP COMPANY • MANSFIELD, OHIO

GORMAN-RUPP OF CANADA LIMITED • ST. THOMAS, ONTARIO, CANADA Printed in U.S.A.

©Copyright by the Gorman-Rupp Company

ITEM NO.	PART NAME	PART NUMBER	MAT'L CODE	QTY	ITEM NO.	PART NAME	PART NUMBER	MAT'L CODE	QTY
1	PUMP CASING	38224-608	10010	1	26	CASING DRAIN PLUG	P12	15079	1
2 *	IMPELLER	38616-004	10010	1	27 *	BACK CVR GSKT	38682-215	20000	1
3 *	SEAL ASSY	GS1250	---	1	28	MACHINE BOLT	A1009	15991	2
4	DISCHARGE FLANGE	38641-505	10010	1	29	CVR PLATE CLAMP	38111-309	11010	1
5	PIPE ELBOW	R96	11990	1	30	CLAMP BAR SCREW	2536	24000	1
6	PIPE NIPPLE	T96	15070	1	31	COVER PLATE ASSY	42111-944	---	1
7	STUD	C1011	15991	4	32	-WARNING PLATE	2613EV	13990	1
8	HEX NUT	D10	15991	4	33	-DRIVE SCREW	BM#04-03	17000	4
9 *	DISCH FLANGE GSKT	38687-010	20000	1	34	-BACK COVER PLT	NOT AVAILABLE		1
10	GREASE CUP	S1509	---	1	35	NAME PLATE	38818-021	13990	1
11	CONNECTOR	26171-013	--	2	36	DRIVE SCREW	BM#04-03	17000	4
12	TUBING	31411-241	19550	1	37 *	CHECK VALVE ASSY	46411-070	---	1
13	PIPE PLUG	P04	15079	1	38	-HEX HD CAPSCREW	B0403	17000	2
14 *	CASING GSKT SET	2474G	18000	1	39	-LOCKWASHER	J04	17000	2
15	MOUNTING BRACKET	41881-442	24150	1	40	-SMALL WEIGHT	7263	15990	1
16	STUD	C0606	15991	8	41 *	-VALVE GASKET	38671-412	19140	1
17	HEX NUT	D06	15991	8	42	-LARGE WEIGHT ASSY	7262	24000	1
18	INTERMEDIATE BRKT	42111-710	---	1	43	SUCTION FLANGE	38645-802	10010	1
19	STUD	C0710	115991	4	44	STUD	C1011	15991	4
20	HEX NUT	D07	15991	4	45	HEX NUT	D10	15991	4
21	LOCKWASHER	J07	15991	4	46 *	SUCT FLANGE GSKT	38687-048	20000	1
22 *	IMP ADJ SHIM SET	37J	17090	1	47	FILL PLUG ASSY	48271-065	---	1
23 *	WEAR PLATE ASSY	46451-324	24150	1					
24	HEX NUT	D06	15991	2					
25	LOCKWASHER	J06	15991	2					
					NOT SHOWN:				
					STRAINER	7823	24000		1

* INDICATES PARTS RECOMMENDED FOR STOCK

THE GORMAN-RUPP COMPANY • MANSFIELD, OHIO

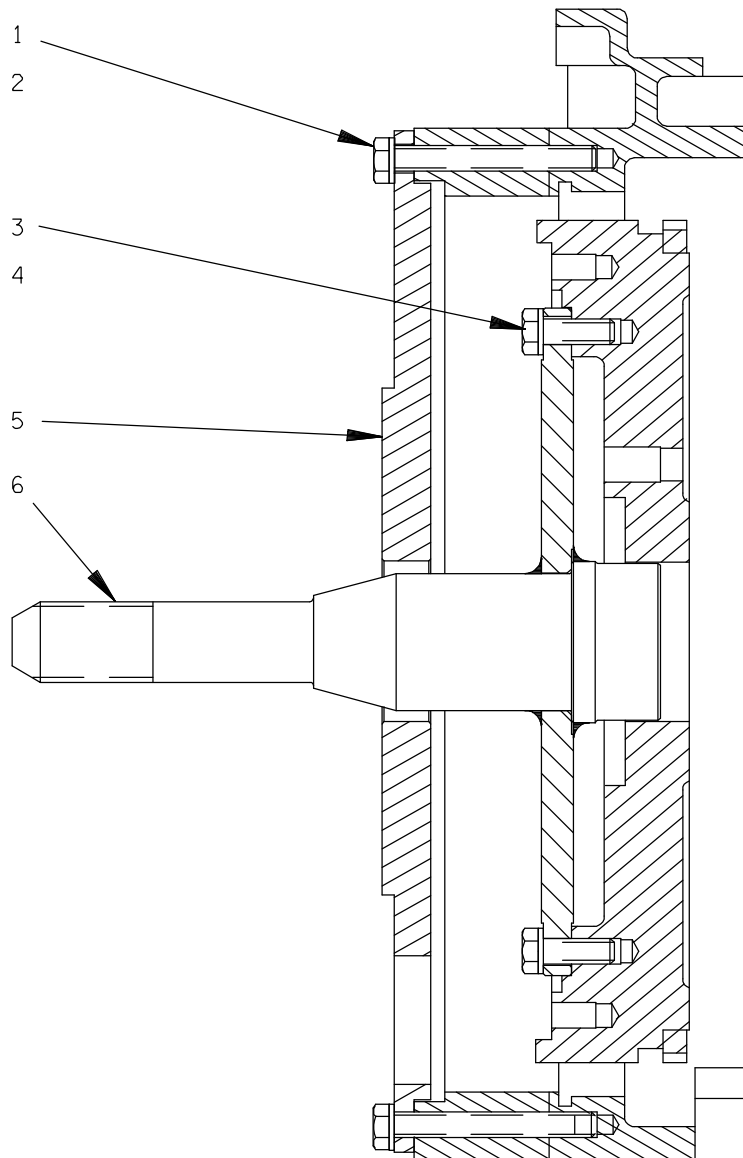
GORMAN-RUPP OF CANADA LIMITED • ST. THOMAS, ONTARIO, CANADA Printed in U.S.A.

©Copyright by the Gorman-Rupp Company

16D2-F3L 1011

S/N 1237231 UP

PUMP ISSUE 2



ITEM NO.	PART NAME	PART NUMBER	MAT'L CODE	QTY
1	HEX HD CAPSCREW	22645-164	---	12
2	LOCKWASHER	21171-511	---	12
3	HEX HD CAPSCREW	22645-164	---	6
4	LOCKWASHER	21171-511	---	6
5	BELL HOUSING ADAPTOR	31741-012	15080	1
6	* STUB SHAFT ASSY	44111-011	24150	1

* INDICATES PARTS RECOMMENDED FOR STOCK

THE GORMAN-RUPP COMPANY • MANSFIELD, OHIO

GORMAN-RUPP OF CANADA LIMITED • ST. THOMAS, ONTARIO, CANADA Printed in U.S.A.

©Copyright by the Gorman-Rupp Company

**For U.S. and International Warranty Information,
Please Visit www.grpumps.com/warranty
or call:
U.S.: 419-755-1280
International: +1-419-755-1352**

**For Canadian Warranty Information,
Please Visit www.grcanada.com/warranty
or call:
519-631-2870**