

ACDE

Use With: OM-04760
MR-04959

PUBLICATION NUMBER PL-04973-02
February 17, 1999
Rev. C 02/17/99
Supersedes: OM-01822-02



PUMP MODEL 16D-VH4D S/G

**MANUAL
PART 2 of 3**

**PARTS
LIST
WITH
PERFORMANCE CURVE**

THE GORMAN-RUPP COMPANY • MANSFIELD, OHIO

GORMAN-RUPP OF CANADA LIMITED • ST. THOMAS, ONTARIO, CANADA Printed in U.S.A.

©Copyright by the Gorman-Rupp Company



The engine exhaust from this product contains chemicals known to the State of California to cause cancer, birth defects or other reproductive harm.

PERFORMANCE CURVE – SECTION A

RECORDING MODEL AND SERIAL NUMBERS

Please record the pump model and serial number in the spaces provided below and in the separate Installation/Operation Manual accompanying your pump. Your Gorman-Rupp distributor needs this information when you require parts or service.

Pump Model: _____

Serial Number: _____

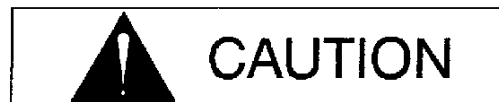
WARRANTY INFORMATION

The pump warranty is provided as part of Gorman-Rupp's support program for customers who operate and maintain their equipment as described in this manual and other accompanying literature. Please note that should the equipment be abused or modified to change its performance beyond the original factory specifications, the warranty will become void and any claim will be denied.

PERFORMANCE CURVES

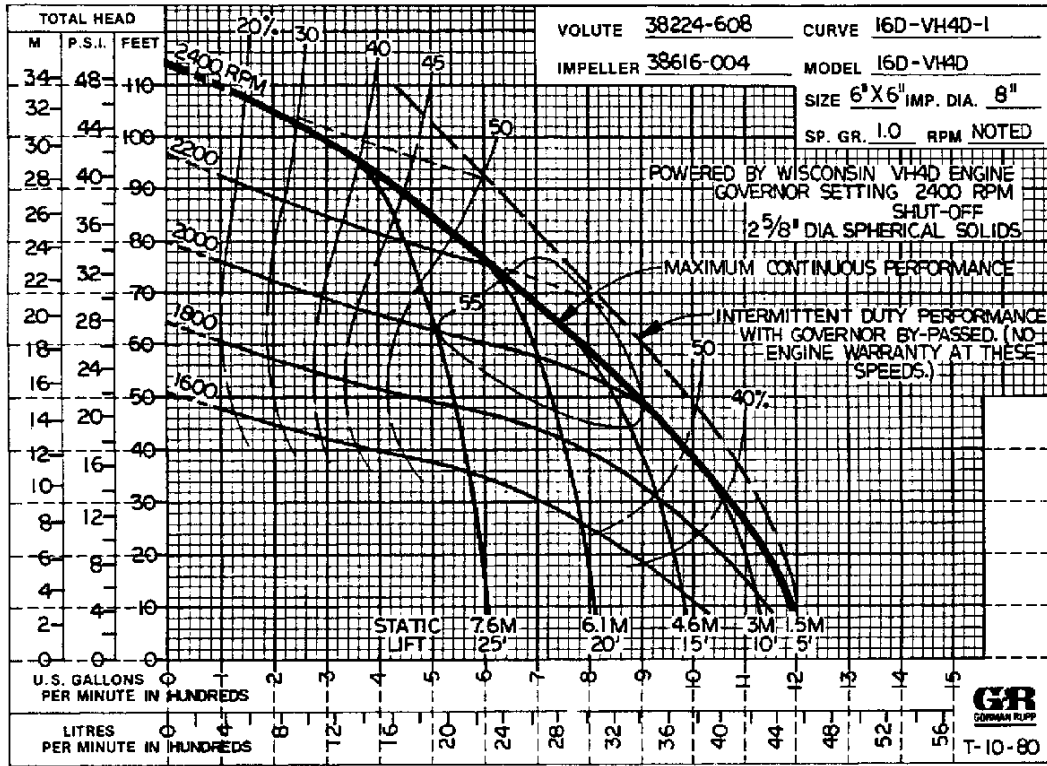
The performance curves on the following page are based on 70° F (21° C) clear water at sea level. Since pump installations are seldom identical, your performance may be different due to such factors as viscosity, specific gravity, elevation, temperature, and impeller trim.

If your pump serial number is followed by an "N", your pump is **NOT** a standard production model. Contact the Gorman-Rupp Company to verify performance or part numbers.



Pump speed and operating condition points must be within the continuous performance range shown on the curve(s).

This Page Intentionally Blank



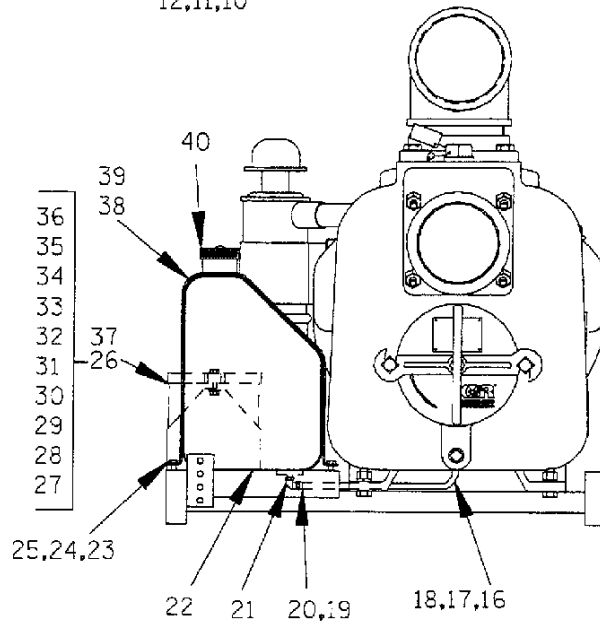
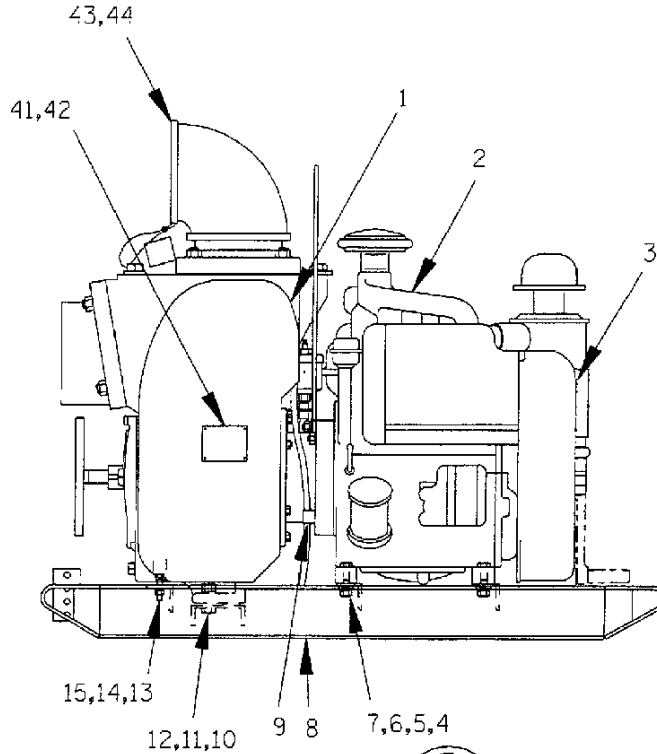
Performance Curve – Model 16D-VH4D S/G

ACDE

16D-VH4D S/G

S/N 778384 UP

PUMP ISSUE 2



THE GORMAN-RUPP COMPANY • MANSFIELD, OHIO

GORMAN-RUPP OF CANADA LIMITED • ST. THOMAS, ONTARIO, CANADA Printed in U.S.A.

©Copyright by the Gorman-Rupp Company

March 26, 1986
Rev. C 02/17/99

1 of 4
Page 10.6 D3

16D-VH4D S/G

S/N 778384 UP

PUMP ISSUE 2

If your pump serial number is followed by an "N", your pump is NOT a standard production model. Contact the Gorman-Rupp Company to verify part numbers.

ITEM NO.	PART NAME	PART NUMBER	MAT'L CODE	QTY	ITEM NO.	PART NAME	PART NUMBER	MAT'L CODE	QTY
1	PUMP END ASSY	16D	---	1	31	-HEX HD CAPSCREW	B0604	15991	2
2	WISC VH4D ENGINE	202-M3	---	1	32	-HEX HD CAPSCREW	B0612	15991	2
3	WARNING DECAL	38817-058	---	1	33	-HEX NUT	D06	15991	4
4	HEX HD CAPSCREW	B0809	15991	4	34	-LOCKWASHER	J06	15991	4
5	HEX NUT	D08	15991	4	35	-FLAT WASHER	K06	15991	2
6	FLAT WASHER	KE08	15991	4	36 *	-BATTERY	SEE OPTIONS		
7	LOCKWASHER	J08	15991	4	37	#4 CABLE ASSY 34'	47311-410	---	1
8	COMBINATION BASE	41566-074	---	1	38	FELT STRIP	9490D	18030	2
9	CLIP	6006	15990	1	39	GAS TANK STRAP	6353	15990	2
10	HEX HD CAPSCREW	B1007	15991	2	40	FUEL TANK ASSY	S992	---	1
11	HEX NUT	D10	15991	2	41	NAME PLATE	38818-021	13990	1
12	LOCKWASHER	J10	15991	2	42	DRIVE SCREW	BM#04-03	17000	4
13	HEX HD CAPSCREW	B0607	15991	2	43	PIPE ELBOW	R96	11990	1
14	HEX NUT	D06	15991	2	44	PIPE NIPPLE	T96	15070	1
15	LOCKWASHER	J06	15991	2		NOT SHOWN:			
16	ELBOW	S1061	---	1		STRAINER	7823	24000	1
17	HOSE END SWIVEL	S1670	---	1		G-R DECAL	GR-03	---	1
18	HOSE 1/4 X 39	31411-025	---	1		INSTRUCTION LABEL	2613DK	---	1
19	HOSE END SWIVEL	S1670	---	1		WARNING DECAL	2613FE	---	1
20	TUBE FITTING	S834	---	1		INSTRUCTION TAG	38817-043	---	1
21	PIPE PLUG	P04	15079	1		SUCTION STICKER	6588AG	---	1
22	FELT STRIP	9490	18030	2		PRIMING STICKER	6588AH	---	1
23	HEX HD CAPSCREW	B0606	15991	2		GREASE CUP INSTRUCT	6588BD	---	1
24	HEX NUT	D06	15991	2		DISCHARGE STICKER	6588BJ	---	1
25	LOCKWASHER	J06	15991	2		OPTIONAL:			
26	BATTERY BOX ASSY	GRP40-02	---	1		× BATTERY	S1338	---	1
27	-GROUND CABLE ASSY	5795AC	24040	1		WHEEL KIT	GRP30-231C	---	1
28	-BATTERY TAG	38818-338	---	1					
29	-BATTERY FRAME	8355B	24000	1					
30	-BATTERY BOX	8356B	24000	1					

*: INDICATES PARTS RECOMMENDED FOR STOCK

THE GORMAN-RUPP COMPANY • MANSFIELD, OHIO

GORMAN-RUPP OF CANADA LIMITED • ST. THOMAS, ONTARIO, CANADA Printed in U.S.A.

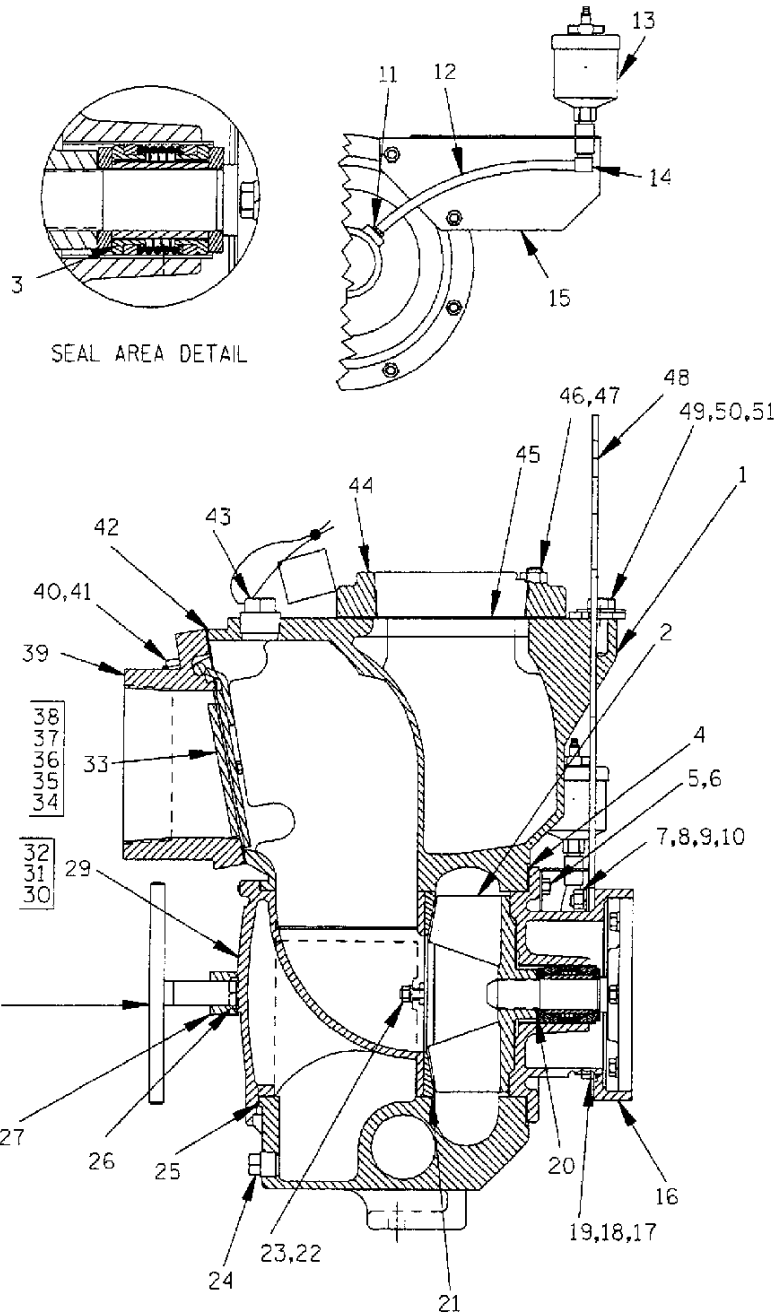
©Copyright by the Gorman-Rupp Company

ACDE

16D-VH4D S/G

S/N 778384 UP

PUMP ISSUE 2



THE GORMAN-RUPP COMPANY • MANSFIELD, OHIO

GORMAN-RUPP OF CANADA LIMITED • ST. THOMAS, ONTARIO, CANADA Printed in U.S.A.

©Copyright by the Gorman-Rupp Company

March 26, 1986

Rev. C 02/17/99

3 of 4

Page 10.6 D3

16D-VH4D S/G

S/N 778384 UP

PUMP ISSUE 2

ITEM NO.	PART NAME	PART NUMBER	MAT'L CODE	QTY	ITEM NO.	PART NAME	PART NUMBER	MAT'L CODE	QTY
1	PUMP CASING	38224-608	3040	1	30	-WARNING PLATE	2613EV	13990	1
2 *	IMPELLER	38616-004	10010	1	31	-DRIVE SCREW	BM#04-03	17000	4
3 *	SEAL ASSY	GS1250	---	1	32	-BACK COVER PLT	NOT AVAILABLE		1
4 *	CASING GSKT SET	2474G	18000	1	33	CHECK VALVE ASSY	46411-070	---	1
5	STUD	C0606	15991	8	34	-HEX HD CAPSCREW	B0403	17000	2
6	HEX NUT	D06	15991	8	35	-LOCKWASHER	J04	17000	2
7	STUD	C0712	15991	2	36 *	-SMALL VALVE WEIGHT	7263	15990	1
8	HEX NUT	D07	15991	2	37 *	-CHECK VALVE GSKT	38671-412	---	1
9	LOCKWASHER	J07	15991	2	38 *	-VALVE WEIGHT	7262	24000	1
10	FLAT WASHER	K07	15991	2	39	SUCTION FLANGE	38645-802	13040	1
11	MALE CONNECTOR	26171-013	---	1	40	STUD	C1011	15991	4
12	TUBING	31411-242	19560	1	41	HEX NUT	D10	15991	4
13	GREASE CUP	S1509	---	1	42 *	SUCT FLANGE GSKT	38687-048	20000	1
14	MALE ELBOW	26171-038	---	1	43	FILL PLUG ASSY	48271-065	---	1
15	MOUNTING BRACKET	41881-358	24150	1	44	DISCHARGE FLANGE	38641-505	13040	1
16	INTERMEDIATE BRKT	42111-710	---	1	45 *	DISCH FLANGE GSKT	38687-010	20000	1
17	STUD	C0711	15991	4	46	STUD	C1011	15991	4
18	HEX NUT	D07	15991	4	47	HEX NUT	D10	15991	4
19	LOCKWASHER	J07	15991	4	48	HOISTING BAIL	44711-001	---	1
20 *	IMP ADJ SHIM SET	37J	17090	REF	49	HEX HD CAPSCREW	B1004	15991	1
21 *	WEAR PLATE ASSY	46451-324	---	1	50	LOCKWASHER	J10	15991	4
22	HEX NUT	D06	15991	2	51	FLAT WASHER	21161-442	---	4
23	LOCKWASHER	J06	15991	2		NOT SHOWN:			
24	CASING DRAIN PLUG	P12	15079	1		PIPE PLUG	P04	15079	1
25 *	COVER PLATE GSKT	38682-215	20000	1		OPTIONAL:			
26	MACHINE BOLT	A1009	15991	2		DISCHARGE FLANGE	38641-525	13000	1
27	COVER PLATE CLAMP	38111-309	11000	1		BCK CVR CONVERS KIT	48228-001	---	1
28	SCREW	2536	24000	1					
29	BACK COVER PLT ASSY	42111-942	---	1					

* INDICATES PARTS RECOMMENDED FOR STOCK

THE GORMAN-RUPP COMPANY • MANSFIELD, OHIO

GORMAN-RUPP OF CANADA LIMITED • ST. THOMAS, ONTARIO, CANADA Printed in U.S.A.

©Copyright by the Gorman-Rupp Company

**For U.S. and International Warranty Information,
Please Visit www.grpumps.com/warranty**

or call:

U.S.: 419-755-1280

International: +1-419-755-1352

**For Canadian Warranty Information,
Please Visit www.grcanada.com/warranty**

or call:

519-631-2870

THE GORMAN-RUPP COMPANY • MANSFIELD, OHIO

GORMAN-RUPP OF CANADA LIMITED • ST. THOMAS, ONTARIO, CANADA