

ACDE

Use With: OM-04760
MR-04959

PUBLICATION NUMBER PL-04971-02

February 17, 1999

Rev. A 02/17/99

Supersedes: OM-00678-02



PUMP MODEL 14C2-VH4D S/G

**MANUAL
PART 2 of 3**

**PARTS
LIST**

**WITH
PERFORMANCE CURVE**

THE GORMAN-RUPP COMPANY • MANSFIELD, OHIO

www.grpumps.com

GORMAN-RUPP OF CANADA LIMITED • ST. THOMAS, ONTARIO, CANADA

Printed in U.S.A.

© Copyright by the Gorman-Rupp Company

Register your new
Gorman-Rupp pump online at
www.grpumps.com/register.

Valid serial number and e-mail address required.

PERFORMANCE CURVE – SECTION A

RECORDING MODEL AND SERIAL NUMBERS

Please record the pump model and serial number in the spaces provided below and in the separate Installation/Operation Manual accompanying your pump. Your Gorman-Rupp distributor needs this information when you require parts or service.

Pump Model: _____

Serial Number: _____

WARRANTY INFORMATION

The pump warranty is provided as part of Gorman-Rupp's support program for customers who operate and maintain their equipment as described in this manual and other accompanying literature. Please note that should the equipment be abused or modified to change its performance beyond the original factory specifications, the warranty will become void and any claim will be denied.

PERFORMANCE CURVES

The performance curves on the following page are based on 70° F (21° C) clear water at sea level. Since pump installations are seldom identical, your performance may be different due to such factors as viscosity, specific gravity, elevation, temperature, and impeller trim.

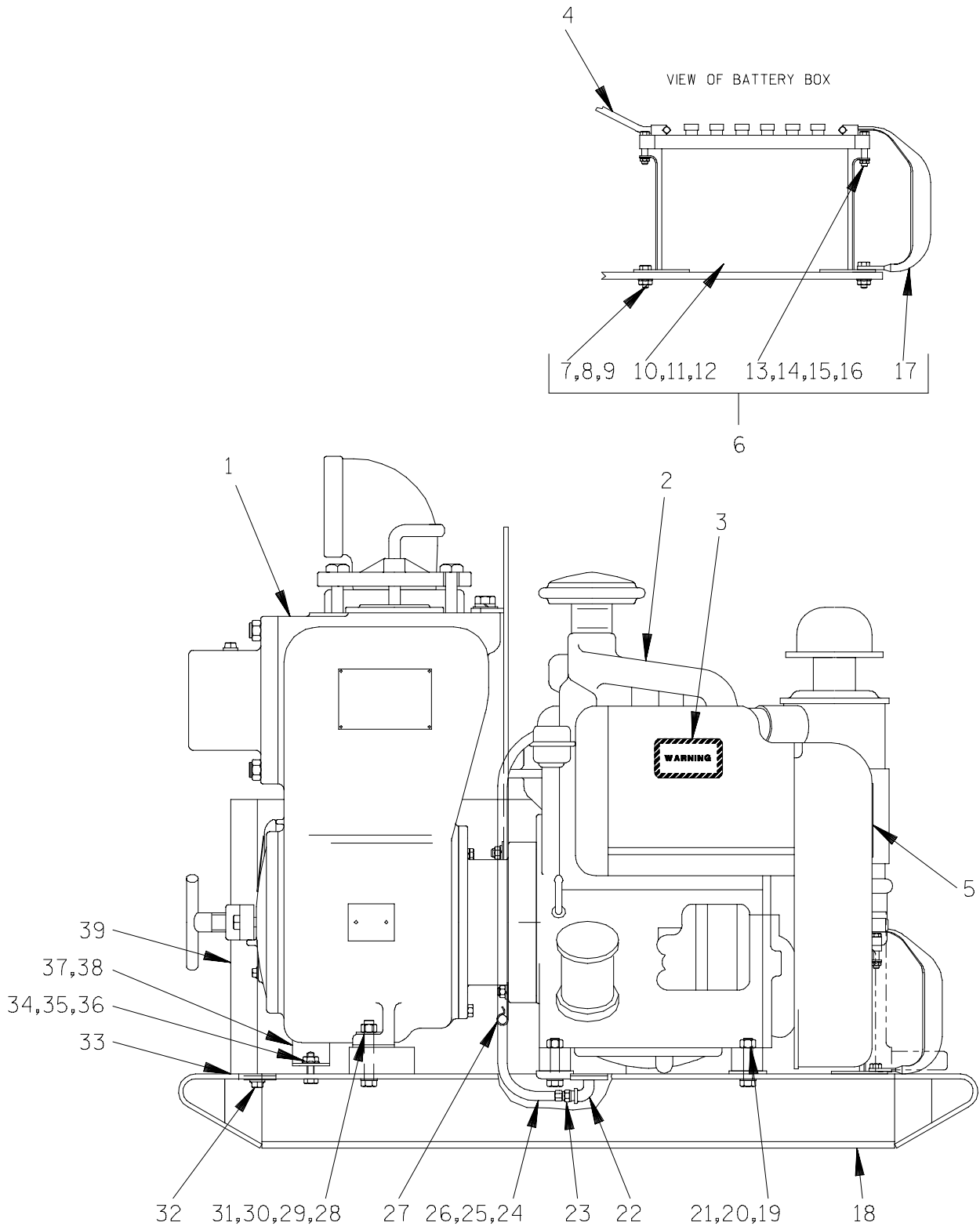
If your pump serial number is followed by an "N", your pump is **NOT** a standard production model. Contact the Gorman-Rupp Company to verify performance or part numbers.



Pump speed and operating condition points must be within the continuous performance range shown on the curve(s).

This Page Intentionally Blank

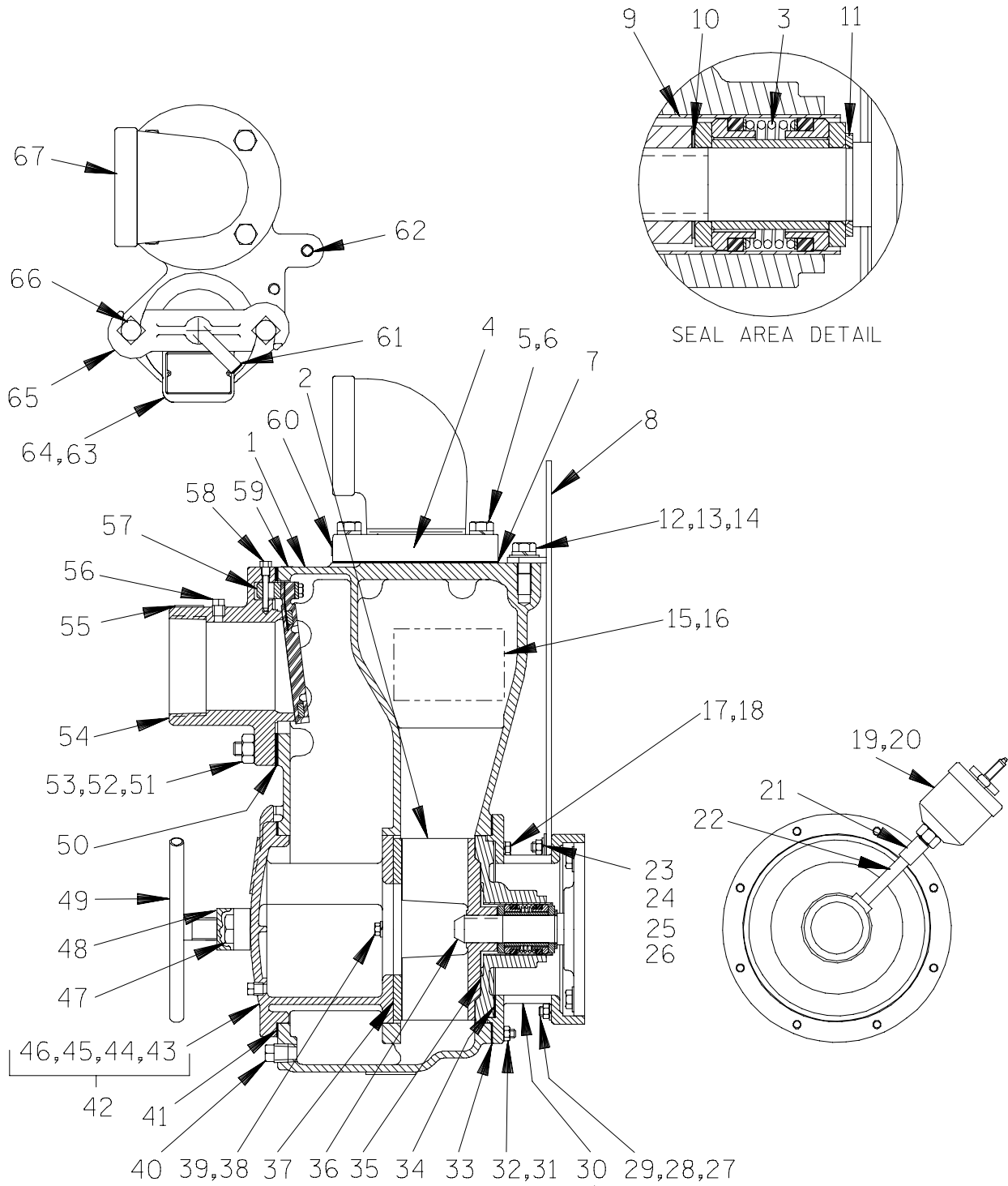
Performance Curve – Model 14C2–VH4D S/G



THE GORMAN-RUPP COMPANY • MANSFIELD, OHIO

GORMAN-RUPP OF CANADA LIMITED • ST. THOMAS, ONTARIO, CANADA Printed in U.S.A.

©Copyright by the Gorman-Rupp Company



THE GORMAN-RUPP COMPANY • MANSFIELD, OHIO

GORMAN-RUPP OF CANADA LIMITED • ST. THOMAS, ONTARIO, CANADA Printed in U.S.A.

©Copyright by the Gorman-Rupp Company

14C2-VH4D S/G

ACDE

S/N 740693 UP

PUMP ISSUE 2

ITEM NO.	PART NAME	PART NUMBER	MAT'L CODE	QTY	ITEM NO.	PART NAME	PART NUMBER	MAT'L CODE	QTY
1	PUMP CASING	12062	10010	1	35	SEAL PLATE ASSY	6567	10010	1
2 *	IMPELLER	9934A	11060	1	36	SHAFT EXTENSION	98		REF
3 *	SEAL ASSY	GS1250	---	1	37 *	WEAR PLATE	12068	15990	1
4	STREET ELBOW	RS64	11990	1	38	LOCKWASHER	J06	15991	2
5	HEX HD CAPSCREW	B1008	15991	4	39	HEX NUT	D06	15991	2
6	LOCKWASHER	J10	15991	4	40	CASING DRAIN PLUG	P08	15079	1
7 *	DISCH FLANGE GSKT	1674G	18000	1	41 *	BACK CVR GSKT	2527G	19090	1
8	HOISTING BAIL ASSY	44711-009	24150	1	42	COVER PLATE ASSY	42111-929	---	1
9 *	SEAL LINER	2205	14080	REF	43	-PIPE PLUG	P04	15079	1
10 *	IMP ADJ SHIM SET	37J	17090	1	44	-DRIVE SCREW	BM#04-03	17000	4
11	SEAL WASHER	3349	15990	1	45	-WARNING PLATE	2613EV	13990	1
12	HEX HD CAPSCREW	B1006	15991	1	46	-BACK COVER PLT	NOT AVAILABLE		1
13	LOCKWASHER	J10	15991	1	47	-MACHINE BOLT	A1012	15991	2
14	WASHER SAE 5/8	21161-442	---	3	48	CLAMP BAR	12064	11010	1
15	NAME PLATE	38818-023	13990	1	49	CLAMP BAR SCREW	2536	24000	1
16	DRIVE SCREW	BM#04-03	17000	4	50 *	SUCT FLANGE GSKT	11389G	19370	1
17	HEX HD CAPSCREW	B0604	15991	4	51	STUD	C1011	15991	2
18	LOCKWASHER	J06	15991	4	52	STUD	C1010	15991	6
19	GREASE CUP	S1509	---	1	53	HEX NUT	D10	15991	8
20	GREASE CUP INSTR	6588BD	---	1	54	SUCTION FLANGE	12065	10010	1
21	PIPE COUPLING	AE04	15079	1	55	SUCTION STICKER	6588AG	---	1
22	NIPPLE	THA0412	15079	1	56	PIPE PLUG	P04	15079	1
23	STUD	C0712	15991	2	57 *	CHECK VALVE ASSY	46411-062	---	1
24	LOCKWASHER	J07	15991	2	58	CHECK VALVE PIN	11557	17010	1
25	FLAT WASHER	K07	15991	2	59	PRIMING STICKER	6588AH	---	1
26	HEX NUT	D07	15991	2	60	DISCHARGE STICKER	6588BJ	---	1
27	STUD	C0711	15991	2	61	CLAMP BAR SCREW	31912-009	15000	1
28	LOCKWASHER	J07	15991	2	62	PIPE PLUG	P04	15079	1
29	HEX NUT	D07	15991	2	63	COVER PLATE ASSY	42111-344	---	1
30	INTERMEDIATE BRACKET	6566	10010	1	64 *	COVER PLATE GSKT	50G	19210	1
31	STUD	C0606	15991	8	65	CLAMP BAR	38111-004	11010	1
32	HEX NUT	D06	15991	8	66	MACHINE BOLT	A1014	15991	2
33 *	CASING GSKT SET	2474G	18000	1	67	DISCHARGE FLANGE	271	10010	1
34 *	SEAL PLATE GSKT	6568	18000	1					

* INDICATES PARTS RECOMMENDED FOR STOCK

THE GORMAN-RUPP COMPANY • MANSFIELD, OHIO

GORMAN-RUPP OF CANADA LIMITED • ST. THOMAS, ONTARIO, CANADA Printed in U.S.A.

©Copyright by the Gorman-Rupp Company

**For U.S. and International Warranty Information,
Please Visit www.grpumps.com/warranty
or call:
U.S.: 419-755-1280
International: +1-419-755-1352**

**For Canadian Warranty Information,
Please Visit www.grcanada.com/warranty
or call:
519-631-2870**