

ACDE

Use With: OM-04760  
MR-04959

PUBLICATION NUMBER PL-04965-03

February 15, 1999

Rev. C 02/24/10

Supersedes: OM-00659-03



## PUMP MODELS

14A2-VH4D S/G

*and*

14A2-(VH4D) PPO

**MANUAL**  
**PART 2 of 3**

**PARTS**  
**LIST**

**WITH**  
**PERFORMANCE CURVE**

**THE GORMAN-RUPP COMPANY • MANSFIELD, OHIO**

[www.grpumps.com](http://www.grpumps.com)

**GORMAN-RUPP OF CANADA LIMITED • ST. THOMAS, ONTARIO, CANADA**

Printed in U.S.A.

©1999 The Gorman-Rupp Company

Register your new  
Gorman-Rupp pump online at  
**www.grpumps.com**

Valid serial number and e-mail address required.



**The engine exhaust from this product contains chemicals known to the State of California to cause cancer, birth defects or other reproductive harm.**

### **RECORD YOUR PUMP MODEL AND SERIAL NUMBER**

Please record your pump model and serial number in the spaces provided below. Your Gorman-Rupp distributor needs this information when you require parts or service.

Pump Model: \_\_\_\_\_

Serial Number: \_\_\_\_\_

## PERFORMANCE CURVE – SECTION A

### RECORDING MODEL AND SERIAL NUMBERS

Please record the pump model and serial number in the spaces provided below and in the separate Installation/Operation Manual accompanying your pump. Your Gorman-Rupp distributor needs this information when you require parts or service.

Pump Model: \_\_\_\_\_

Serial Number: \_\_\_\_\_

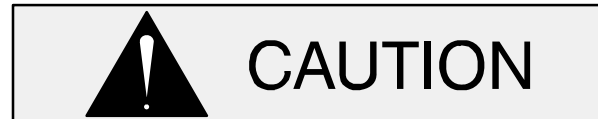
### WARRANTY INFORMATION

The pump warranty is provided as part of Gorman-Rupp's support program for customers who operate and maintain their equipment as described in this manual and other accompanying literature. Please note that should the equipment be abused or modified to change its performance beyond the original factory specifications, the warranty will become void and any claim will be denied.

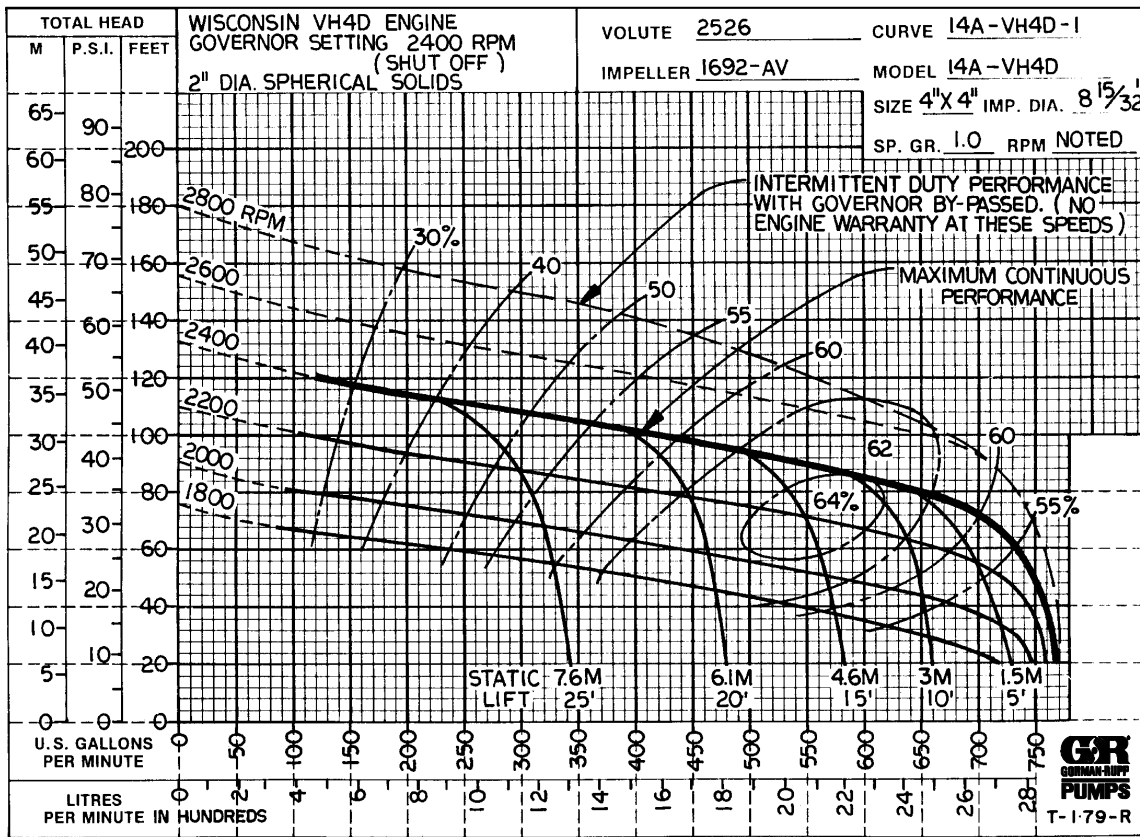
### PERFORMANCE CURVE

The performance curve on the following page is based on 70°F (21°C) clear water at sea level. Since pump installations are seldom identical, your performance may be different due to such factors as viscosity, specific gravity, elevation, temperature, and impeller trim.

If your pump serial number is followed by an "N", your pump is **NOT** a standard production model. Contact the Gorman-Rupp Company to verify performance or part numbers.



Pump speed and operating condition points must be within the continuous performance range shown on the curve(s).

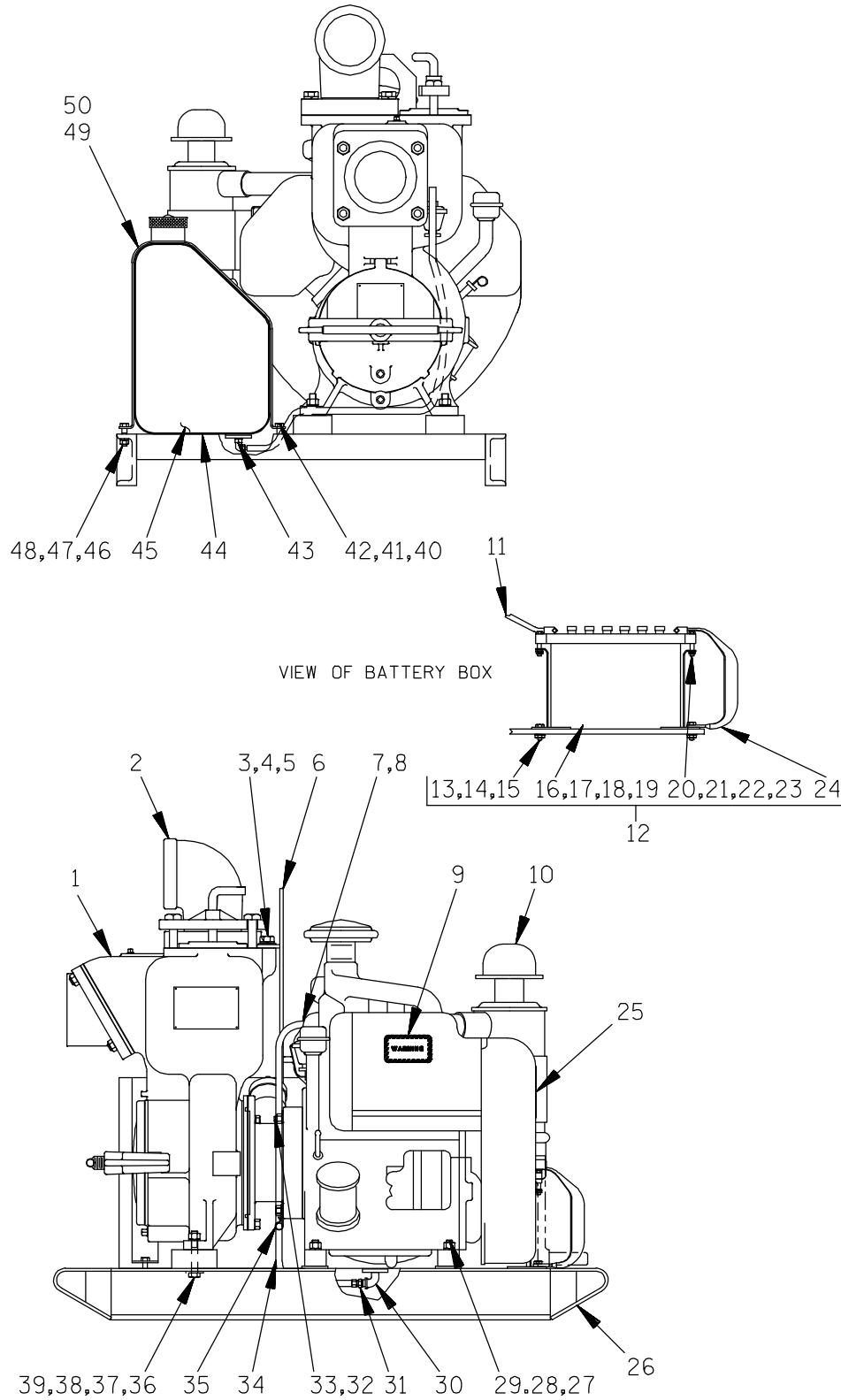


Performance Curve – Model 14A2-VH4D S/G

**This Page Intentionally Blank**

# 14A2-VH4D S/G 14A2-(VH4D) PPO

S/N 740693 UP  
PUMP ISSUE 3



**THE GORMAN-RUPP COMPANY • MANSFIELD, OHIO**

GORMAN-RUPP OF CANADA LIMITED • ST. THOMAS, ONTARIO, CANADA Printed in U.S.A.

©1999 The Gorman-Rupp Company

# 14A2-VH4D S/G 14A2-(VH4D) PPO

S/N 740693 UP  
PUMP ISSUE 3

If your pump serial number is followed by an "N", your pump is NOT a standard production model. Contact the Gorman-Rupp Company to verify part numbers.

ITEM NO.	PART NAME	PART NUMBER	MAT'L CODE	QTY	ITEM NO.	PART NAME	PART NUMBER	MAT'L CODE	QTY
1	PUMP END ASSY	14A2	----	1	30	TUBE FITTING	5634	----	1
2	ST PIPE ELBOW	RS64	11990	REF	31	HOSE END SWIVEL	S1670	----	1
3	HEX HD CAPSCREW	B1004	15991	1	32	STUD	C0712	15990	2
4	LOCKWASHER	J10	15991	1	33	FLAT WASHER	K07	15990	2
5	FLAT WASHER	21161-442	----	1	34	39" HOSE	31411-025	19360	1
6	HOIST BAIL	8911	24000	1	35	CLIP	6006	15990	1
7	HOSE END SWIVEL	S1670	----	1	36	HEX HD CAPSCREW	B0813	15991	2
8	ELBOW	S1061	----	'	37	HEX NUT	D08	15991	2
9	WARNING DECAL	38816-096	----	1	38	LOCKWASHER	J08	15991	2
10	WISC VH4D ENGINE	202 M3	----	1	39	FLAT WASHER	K08	15991	2
11	34" #4 CABLE ASSY	47311-410	----	1	40	HEX HD CAPSCREW	B0607	15991	2
12	12V BATTERY BOX ASSY	GRP40-02	----	1	41	HEX NUT	D06	15991	2
13	-HEX HD CAPSCREW	B0604	15991	2	42	LOCKWASHER	J06	15991	2
14	-LOCKWASHER	J06	15991	2	43	PIPE PLUG	P04	11990	1
15	-HEX NUT	D06	15991	2	44	FELT STRIP	9490	18030	2
16	-BATTERY BOX	8356B	24000		45	GAS TANK	S992	----	1
17 *	-BATTERY	SEE OPTIONS		1	46	HEX HD CAPSCREW	B0606	15991	2
18	-BATTERY TAG	38818-338	----	1	47	LOCKWASHER	J06	15991	2
19	-BATTERY FRAME	8355B	24000	1	48	HEX NUT	D06	15991	2
20	-HEX HD CAPSCREW	B0612	15991	2	49	FELT STRIP	9490D	18030	2
21	-HEX NUT	D06	15991	2	50	GAS TANK STRAP	6353	15990	2
22	-LOCKWASHER	J06	15991	2		OPTIONAL:			
23	-FLAT WASHER	K06	15991	2		WHEEL KIT	GRP30-231	----	1
24	-GRD CABLE ASSY	5795AC	24040	1		TACHOMETER ASSY	48312-603	----	1
25	WARNING DECAL	38817-058	----	1		HOURMETER ASSY	48312-403	----	1
26	BASE	6351A	24000	1		INSTR PANEL ASSY	48312-859	----	1
27	HEX HD CAPSCREW	B0809	15991	4		* BATTERY	S1338	----	1
28	LOCKWASHER	J08	15991	4					
29	HEX NUT	D08	15991	4					

\* INDICATES PARTS RECOMMENDED FOR STOCK

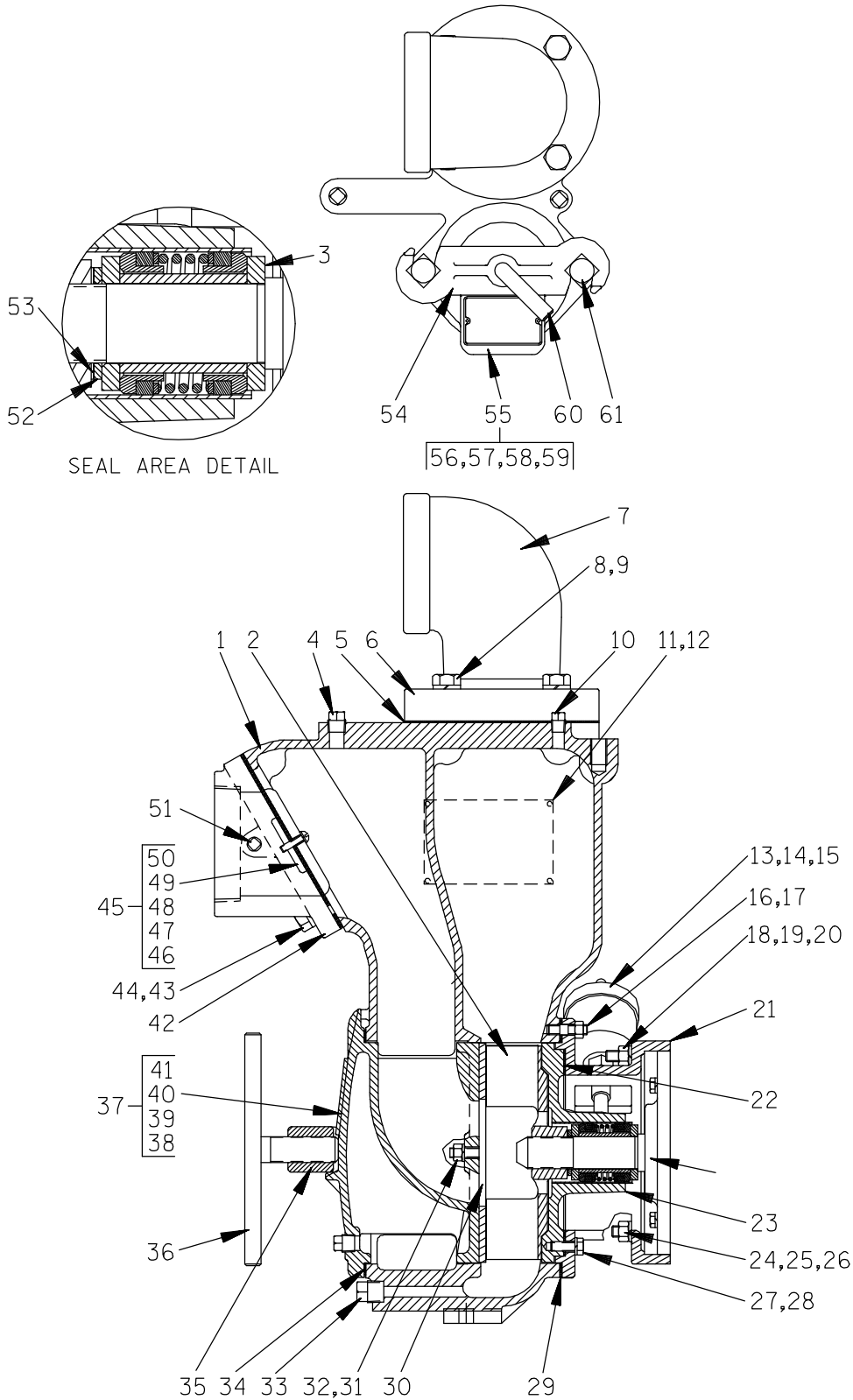
## THE GORMAN-RUPP COMPANY • MANSFIELD, OHIO

GORMAN-RUPP OF CANADA LIMITED • ST. THOMAS, ONTARIO, CANADA Printed in U.S.A.

©1999 The Gorman-Rupp Company

# 14A2-VH4D S/G 14A2-(VH4D) PPO

S/N 740693 UP  
PUMP ISSUE 3



## THE GORMAN-RUPP COMPANY • MANSFIELD, OHIO

GORMAN-RUPP OF CANADA LIMITED • ST. THOMAS, ONTARIO, CANADA Printed in U.S.A.

©1999 The Gorman-Rupp Company



# 14A2-VH4D S/G 14A2-(VH4D) PPO

S/N 740693 UP  
PUMP ISSUE 3

ITEM NO.	PART NAME	PART NUMBER	MAT'L CODE	QTY	ITEM NO.	PART NAME	PART NUMBER	MAT'L CODE	QTY
1	PUMP CASING	2526	10010	1	37	BACK CVR PLATE ASSY	42111-926	----	1
2 *	IMPELLER	1692AV	11060	1	38	-COVER PLATE	NOT AVAILABLE		
3 *	SEAL ASSY	GS1250	----	1	39	-PIPE PLUG	P06	15079	1
4	PIPE PLUG	P06	15079	1	40	-WARNING PLATE	2613EV	13990	1
5 *	DISCH FLANGE GSKT	1674G	18000	1	41	-DRIVE SCREW	BM#04-03	17000	4
6	DISCHARGE FLANGE	271	10010	1	42	SUCTION FLANGE	1736	10010	1
7	STREET ELBOW	RS64	11990	1	43	HEX HD CAPSCREW	B1007	15991	4
8	HEX HD CAPSCREW	B1008	15991	4	44	LOCKWASHER	J10	15991	4
9	LOCKWASHER	J10	15991	4	45	CHECK VALVE ASSY	9915	----	1
10	PIPE PLUG	P04	15079	1	46 *	-VALVE WEIGHT	19	10010	1
11	NAME PLATE	38818-023	13990	1	47	-RD HD MACH SCREW	X0404	17000	2
12	DRIVE SCREW	BM#04-03	17000	4	48	-LOCKWASHER	J04	17090	2
13	GREASE CUP	S1509	----	1	49 *	-VALVE WEIGHT	2936	10010	1
14	HVY PIPE NIPPLE	THA408	15079	1	50 *	-VALVE GSKT	131D	19070	1
15	PIPE COUPLING	AE04	15079	1	51	PIPE PLUG	P04	15079	1
16	STUD	C0606	15991	8	52	SEAL WASHER	3349	15990	1
17	HEX NUT	D06	15991	8	53 *	IMP ADJ SHIM SET	37J	17090	1
18	STUD	C0712	15991	2	54	CLAMP BAR	38111-004	11010	1
19	HEX NUT	D07	15991	2	55	FILL CVR PLATE ASSY	42111-344	----	1
20	LOCKWASHER	J07	15991	2	56	-WARNING PLATE	38816-097	13990	1
21	INTERMEDIATE BRKT	6566	10010	1	57	-COVER PLATE	NOT AVAILABE		
22	SEAL PLATE GSKT	6568	18000	1	58 *	-COVER PLATE GSKT	50G	19210	1
23 *	SEAL PLATE	6567	10010	1	59	-DRIVE SCREW	BM#04-03	17000	2
24	STUD	C0711	15991	2	60	CLAMP BAR SCREW	31912-009	15000	1
25	HEX NUT	D07	15991	2	61	MACHINE BOLT	A1014	15991	2
26	LOCKWASHER	J07	15991	2	NOT SHOWN:				
27	HEX HD CAPSCREW	B0604	15991	4		STRAINER	2690	24000	1
28	LOCKWASHER	J06	15991	4		WARNING DECAL	2613FE	----	1
29 *	PMP CASING GSKT SET	2474G	18000	1		INSTRUCTION TAG	38817-085	----	1
30 *	WEAR PLATE ASSY	2605	15990	1		SUCTION STICKER	6588AG	----	1
31	HEX NUT	D06	15991	2		PRIMING STICKER	6588AH	----	1
32	LOCKWASHER	J06	15991	2		GREASE CUP INSTR	6588BD	----	1
33	CASING DRAIN PLUG	P08	15079	1		DISCHARGE STICKER	6588BJ	----	1
34 *	COVER PLATE GSKT	2527G	19090	1		G-R DECAL	GR-03	----	1
35	CLAMP BAR	2528	11010	1		INSTRUCTION DECAL	2613DK	----	1
36	SCREW ASSY	2536	24000	1					

\* INDICATES PARTS RECOMMENDED FOR STOCK

## THE GORMAN-RUPP COMPANY • MANSFIELD, OHIO

GORMAN-RUPP OF CANADA LIMITED • ST. THOMAS, ONTARIO, CANADA Printed in U.S.A.

©1999 The Gorman-Rupp Company

**For U.S. and International Warranty Information,  
Please Visit [www.grpumps.com/warranty](http://www.grpumps.com/warranty)**

**or call:**

**U.S.: 419-755-1280**

**International: +1-419-755-1352**

**For Canadian Warranty Information,  
Please Visit [www.grcanada.com/warranty](http://www.grcanada.com/warranty)**

**or call:**

**519-631-2870**