

ACE

Use With: OM—04760
MR—04959

PUBLICATION NUMBER PL—04964—01

February 11, 1999

Rev. A 02/11/99

Supersedes: OM—02947—01



PUMP MODEL 13D—GX240

**MANUAL
PART 2 of 3**

**PARTS
LIST
WITH
PERFORMANCE CURVE**

THE GORMAN-RUPP COMPANY • MANSFIELD, OHIO

GORMAN-RUPP OF CANADA LIMITED • ST. THOMAS, ONTARIO, CANADA

Printed in U.S.A.

©Copyright by the Gorman-Rupp Company



The engine exhaust from this product contains chemicals known to the State of California to cause cancer, birth defects or other reproductive harm.

PERFORMANCE CURVE – SECTION A

RECORDING MODEL AND SERIAL NUMBERS

Please record the pump model and serial number in the spaces provided below and in the separate Installation/Operation Manual accompanying your pump. Your Gorman-Rupp distributor needs this information when you require parts or service.

Pump Model: _____

Serial Number: _____

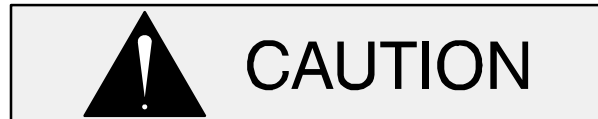
WARRANTY INFORMATION

The pump warranty is provided as part of Gorman-Rupp's support program for customers who operate and maintain their equipment as described in this manual and other accompanying literature. Please note that should the equipment be abused or modified to change its performance beyond the original factory specifications, the warranty will become void and any claim will be denied.

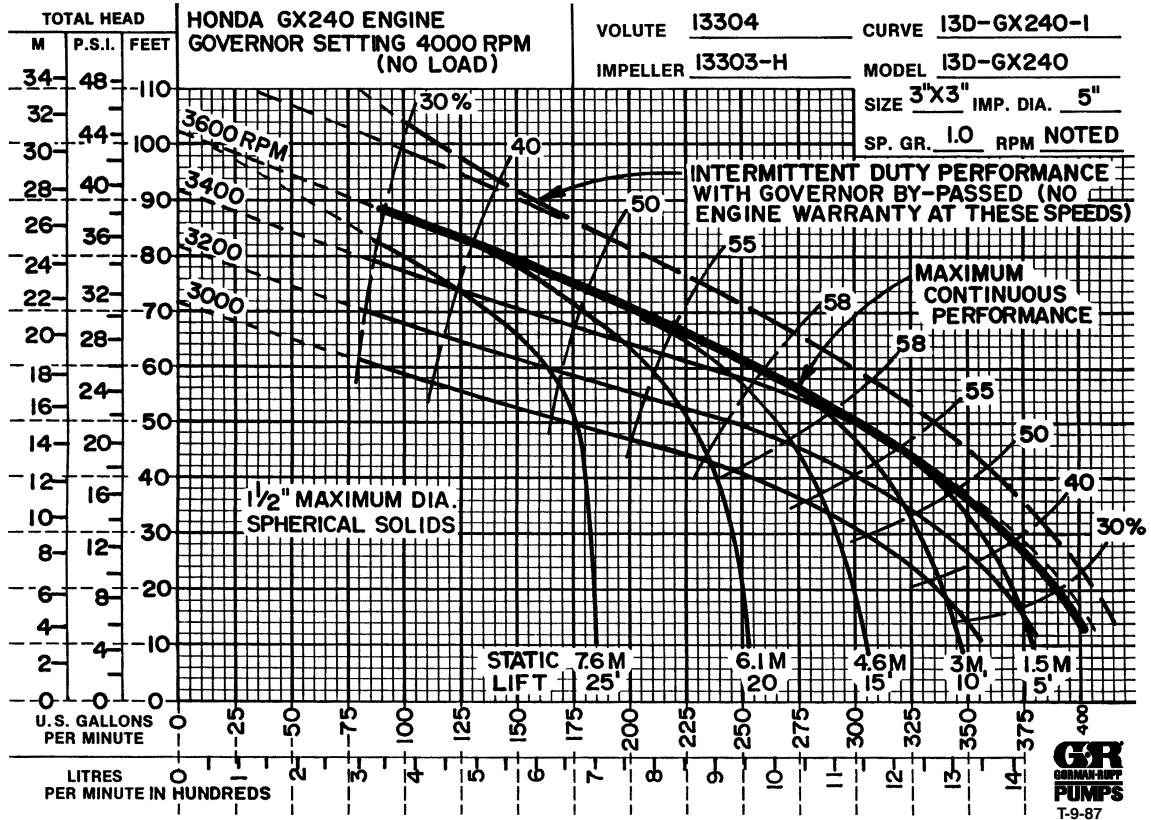
PERFORMANCE CURVES

The performance curves on the following page are based on 70° F (21° C) clear water at sea level. Since pump installations are seldom identical, your performance may be different due to such factors as viscosity, specific gravity, elevation, temperature, and impeller trim.

If your pump serial number is followed by an "N", your pump is **NOT** a standard production model. Contact the Gorman-Rupp Company to verify performance or part numbers.

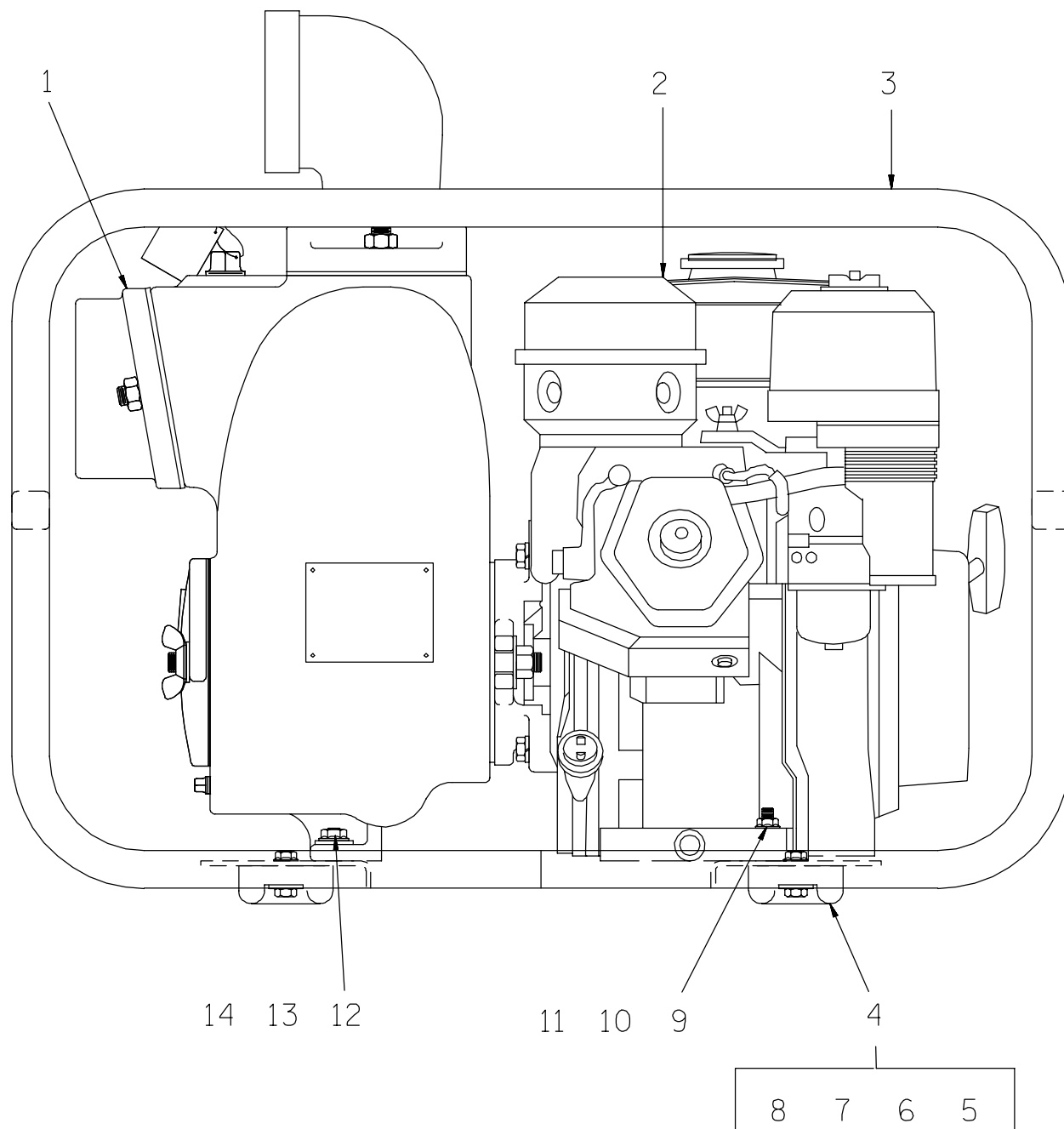


Pump speed and operating condition points must be within the continuous performance range shown on the curve(s).



Performance Curve – Model 13D–GX240

This Page Intentionally Blank

**THE GORMAN-RUPP COMPANY • MANSFIELD, OHIO**

GORMAN-RUPP OF CANADA LIMITED • ST. THOMAS, ONTARIO, CANADA Printed in U.S.A.

©Copyright by the Gorman-Rupp Company

November 12, 1987

Rev. A 02/11/99

1 of 4

Page 10.3 D1

13D—GX240

S/N 881647 UP

PUMP ISSUE 1

If your pump serial number is followed by an "N", your pump is NOT a standard production model. Contact the Gorman-Rupp Company to verify part numbers.

ITEM NO.	PART NAME	PART NUMBER	MAT'L CODE	QTY
1	PUMP END ASSY	13D—(GX240)	----	1
2	HONDA GX240 ENGINE	29122—031	----	1
3	ROLLOVER BASE	41583—315	24150	1
4	RUBBER FOOT MOUNTING KIT	48152—603	----	1
5	—RUBBER BUMPER	S1224	----	4
6	—FLAT WASHER	K05	15991	4
7	—HEX HD CAPSCREW	B0504	15991	4
8	—FLANGED HEX NUT	21765—312	----	2
9	FLAT WASHER	KE05	15991	2
10	HEX HD CAPSCREW	B0506	15991	2
11	FLANGED HEX NUT	21765—312	----	2
12	FLAT WASHER	KE06	15991	4
13	HEX HD CAPSCREW	B0605	15991	2
14	FLANGED HEX NUT	21765—314	----	2

NOT SHOWN:

WARNING DECAL	2613FE	----	1
HAND CARRY DECAL	2613FT	----	2
GREASE CUP INSTRUCTION	6588BD	----	1
PRIMING STICKER	6588AH	----	1

OPTIONAL:

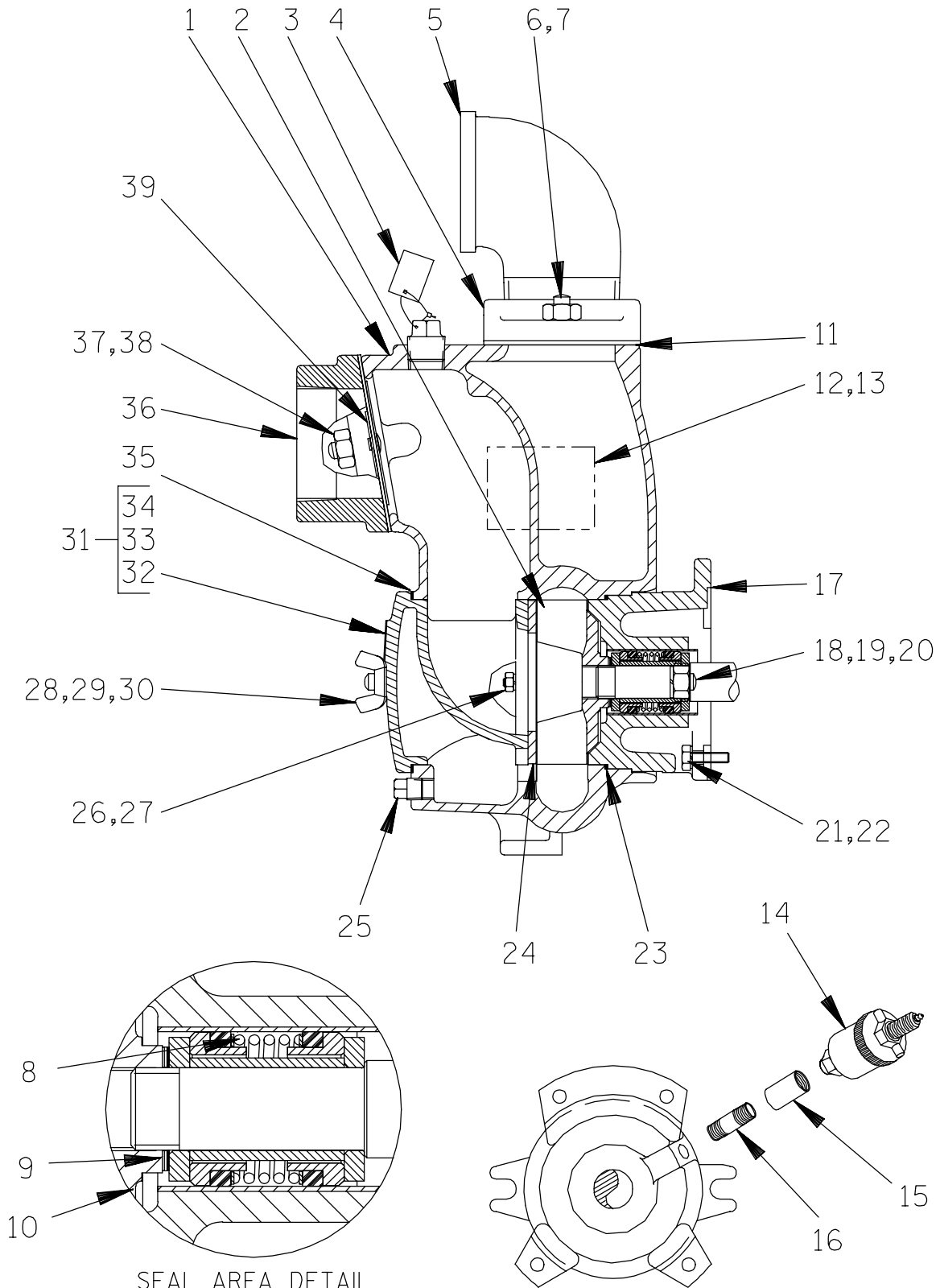
WHEEL KIT	GRP30—51	----	1
-----------	----------	------	---

* INDICATES PARTS RECOMMENDED FOR STOCK

THE GORMAN-RUPP COMPANY • MANSFIELD, OHIO

GORMAN-RUPP OF CANADA LIMITED • ST. THOMAS, ONTARIO, CANADA Printed in U.S.A.

©Copyright by the Gorman-Rupp Company



THE GORMAN-RUPP COMPANY • MANSFIELD, OHIO

GORMAN-RUPP OF CANADA LIMITED • ST. THOMAS, ONTARIO, CANADA Printed in U.S.A.

©Copyright by the Gorman-Rupp Company

November 12, 1987

Rev. A 02/11/99

3 of 4

Page 10.3 D1

13D—GX240

S/N 881647 UP

PUMP ISSUE 1

ITEM NO.	PART NAME	PART NUMBER	MAT'L CODE	QTY	ITEM NO.	PART NAME	PART NUMBER	MAT'L CODE	QTY
1	PUMP CASING	13304	13040	1	23 *	INTERMEDIATE O-RING	25152-248	---	1
2 *	IMPELLER	13303H	11060	1	24 *	WEAR PLATE	2643B	15990	1
3	FILL PLUG ASSY	48271-063	---	1	25	CASING DRAIN PLUG	P06	15079	1
4	DISCHARGE FLANGE	13427	13040	1	26	LOCKWASHER	J04	15991	2
5	ST ELBOW	RS48	11999	1	27	HEX NUT	D04	15991	2
6	STUD	C0807	15991	2	28	STUD	C0808	15991	2
7	HEX NUT	D08	15991	2	29	FLAT WASHER	K08	15991	2
8 *	SEAL ASSY	46521-014	---	1	30	COVER WING NUT	BB08	15991	2
9 *	IMP ADJ SHIM SET	2X	17090	REF	31	COVER PLATE ASSY	42111-919	---	1
10 *	SEAL LINER	83	14080	REF	32	-WARNING PLATE	2613EV	13990	1
11 *	DISCH FLANGE GSKT	13428	20000	1	33	-DRIVE SCREW	BM#04-03	17000	4
12	NAME PLATE	38818-021	13990	1	34	-BACK COVER PLATE	NOT AVAILABLE		1
13	DRIVE SCREW	BM#04-03	17000	4	35 *	COVER PLATE GSKT	12369G	20000	1
14	GREASE CUP	S36	---	1	36	SUCTION FLANGE	13425	13040	1
15	COUPLING	AE04	15079	1	37	STUD	C0807	15991	2
16	PIPE NIPPLE	T0406	15079	1	38	HEX NUT	D08	15991	2
17	INTERMEDIATE	38264-222	13040	1	39 *	CHECK VALVE ASSY	13426	---	1
18	STUD	C0808	15991	2	NOT SHOWN:				
19	FLAT WASHER	K08	15991	2		STRAINER	4917	24001	1
20	HEX NUT	D08	15991	2		SUCTION STICKER	6588AG	---	1
21	HEX HD CAPSCREW	B0605	15991	4		DISCHARGE STICKER	6588BJ	---	1
22	LOCKWASHER	J06	15991	4					

* INDICATES PARTS RECOMMENDED FOR STOCK

THE GORMAN-RUPP COMPANY • MANSFIELD, OHIO

GORMAN-RUPP OF CANADA LIMITED • ST. THOMAS, ONTARIO, CANADA Printed in U.S.A.

©Copyright by the Gorman-Rupp Company

**For U.S. and International Warranty Information,
Please Visit www.grpumps.com/warranty
or call:**

**U.S.: 419-755-1280
International: +1-419-755-1352**

**For Canadian Warranty Information,
Please Visit www.grcanada.com/warranty
or call:**

519-631-2870