

ACE

Use With: OM-04760
MR-04959

PUBLICATION NUMBER PL-04963-04

February 10, 1999

Rev. E 05-19-10

Supersedes: OM-01564-04



PUMP MODELS
13D-19 *and* 13D(19) PPO

MANUAL
PART 2 of 3

PARTS
LIST
WITH
PERFORMANCE CURVE

THE GORMAN-RUPP COMPANY • MANSFIELD, OHIO

GORMAN-RUPP OF CANADA LIMITED • ST. THOMAS, ONTARIO, CANADA Printed in U.S.A.

©1999 The Gorman-Rupp Company

Register your new
Gorman-Rupp pump online at
www.grpumps.com

Valid serial number and e-mail address required.



The engine exhaust from this product contains chemicals known to the State of California to cause cancer, birth defects or other reproductive harm.

RECORD YOUR PUMP MODEL AND SERIAL NUMBER

Please record your pump model and serial number in the spaces provided below. Your Gorman-Rupp distributor needs this information when you require parts or service.

Pump Model: _____
Serial Number: _____

PERFORMANCE CURVE – SECTION A

RECORDING MODEL AND SERIAL NUMBERS

Please record the pump model and serial number in the spaces provided below and in the separate Installation/Operation Manual accompanying your pump. Your Gorman-Rupp distributor needs this information when you require parts or service.

Pump Model: _____

Serial Number: _____

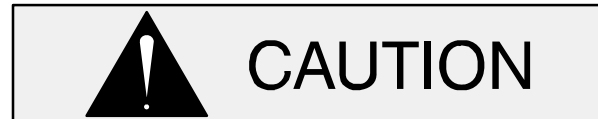
WARRANTY INFORMATION

The pump warranty is provided as part of Gorman-Rupp's support program for customers who operate and maintain their equipment as described in this manual and other accompanying literature. Please note that should the equipment be abused or modified to change its performance beyond the original factory specifications, the warranty will become void and any claim will be denied.

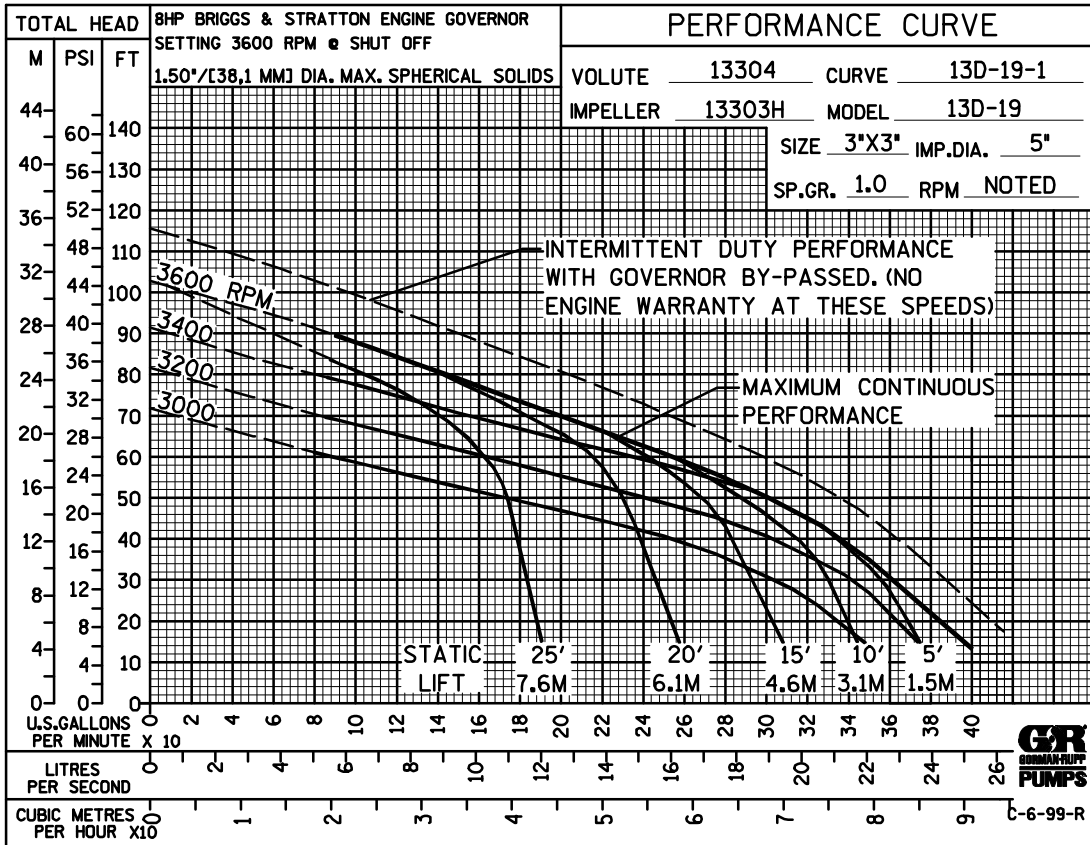
PERFORMANCE CURVE

The performance curve on the following page is based on 70° F (21° C) clear water at sea level. Since pump installations are seldom identical, your performance may be different due to such factors as viscosity, specific gravity, elevation, temperature, and impeller trim.

If your pump serial number is followed by an "N", your pump is **NOT** a standard production model. Contact the Gorman-Rupp Company to verify performance or part numbers.



Pump speed and operating condition points must be within the continuous performance range shown on the curve(s).

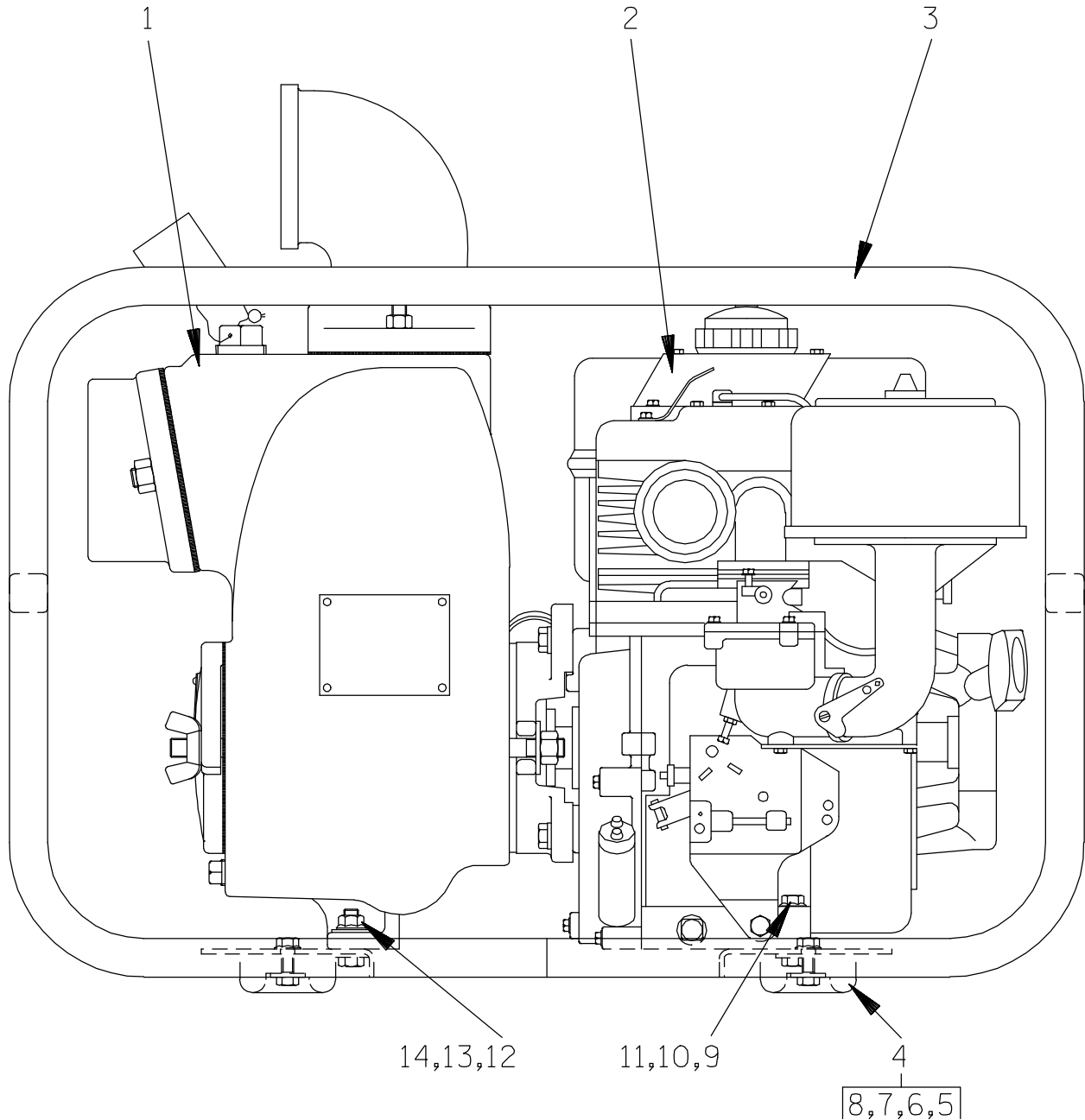


Performance Curve – Model 13D-19

13D-19

S/N 865798 UP

PUMP ISSUE 4



THE GORMAN-RUPP COMPANY • MANSFIELD, OHIO

GORMAN-RUPP OF CANADA LIMITED • ST. THOMAS, ONTARIO, CANADA Printed in U.S.A.

©1999 The Gorman-Rupp Company

If your pump serial number is followed by an "N", your pump is NOT a standard production model. Contact the Gorman-Rupp Company to verify part numbers.

ITEM NO.	PART NAME	PART NUMBER	MAT'L CODE	QTY
1	PUMP PARTS ONLY	13D-(19) PPO	----	1
2	B & S 19 ENGINE	29112-162	----	1
3	ROLLOVER BASE	41583-315	24150	1
4	RUBBER FOOT MOUNTING KIT	48152-603	----	1
5	-HEX HD CAPSCREW	B0504	15991	4
6	-FLAT WASHER	K05	15991	4
7	-RUBBER BUMPER	S1224	----	4
8	-FLANGED HEX NUT	21765-312	----	2
9	FLAT WASHER	KE05	15991	2
10	HEX HD CAPSCREW	B0506	15991	2
11	FLANGED HEX NUT	21765-312	----	2
12	FLAT WASHER	K06	15991	4
13	HEX HD CAPSCREW	B0605	15991	2
14	FLANGED HEX NUT	21765-314	----	2

NOT SHOWN:

WARNING DECAL	2613FE	----	1
HAND CARRY DECAL	2613FT	----	1
CAUTION - OIL DECAL	38816-341	----	1
ENGINE STARTUP TAG	38816-269	----	1
CPB DECAL	29811-055	----	1

OPTIONAL:

WHEEL KIT	GRP30-51	----	1
-----------	----------	------	---

THE GORMAN-RUPP COMPANY • MANSFIELD, OHIO

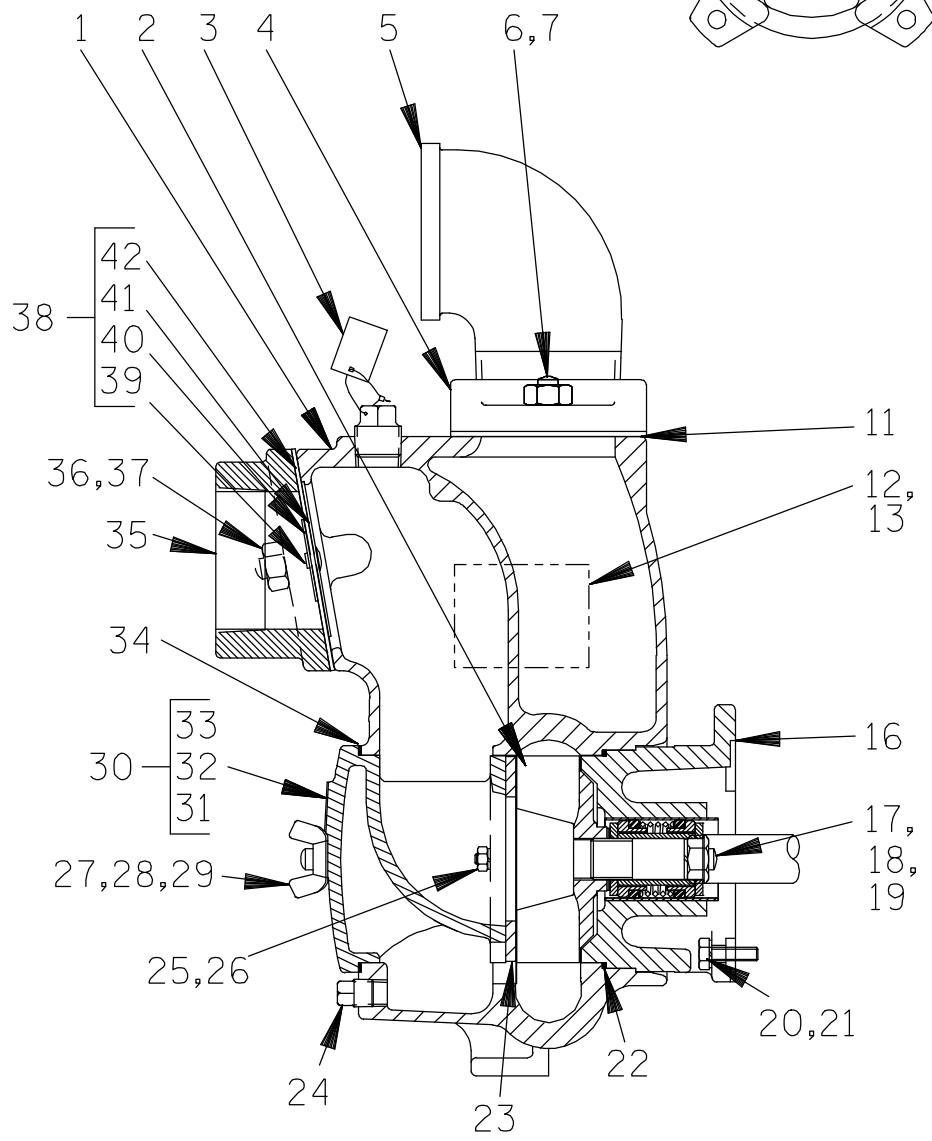
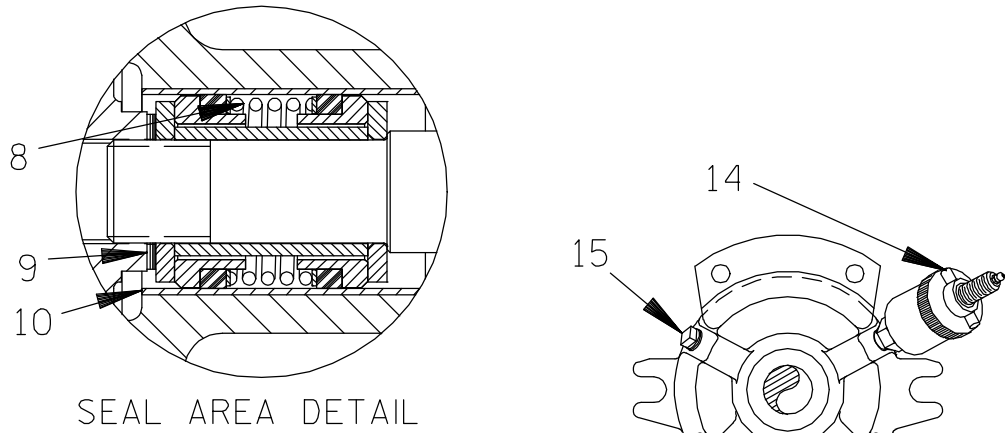
GORMAN-RUPP OF CANADA LIMITED • ST. THOMAS, ONTARIO, CANADA Printed in U.S.A.

©1999 The Gorman-Rupp Company

13D-19

S/N 865798 UP

PUMP ISSUE 4



THE GORMAN-RUPP COMPANY • MANSFIELD, OHIO

GORMAN-RUPP OF CANADA LIMITED • ST. THOMAS, ONTARIO, CANADA Printed in U.S.A.

©1999 The Gorman-Rupp Company

ITEM NO.	PART NAME	PART NUMBER	MAT'L CODE	QTY	ITEM NO.	PART NAME	PART NUMBER	MAT'L CODE	QTY
1	PUMP CASING	13304	13040	1	26	HEX NUT	D04	15991	2
2 *	IMPELLER	13303H	11060	1	27	STUD	C0808	15991	2
3	FILL PLUG ASSY	48271-063	---	1	28	FLAT WASHER	K08	15991	2
4	DISCHARGE FLANGE	13427	13040	1	29	COVER WING NUT	BB08	15991	2
5	ST ELBOW	RS48	11999	1	30	COVER PLATE ASSY	42111-919	---	1
6	STUD	C0807	15991	2	31	-WARNING PLATE	2613EV	13990	1
7	HEX NUT	D08	15991	2	32	-DRIVE SCREW	BM#04-03	17000	4
8 *	SEAL ASSY	46521-014	---	1	33	-BACK COVER PLATE	NOT AVAILABLE		1
9 *	IMP ADJ SHIM SET	2X	17090	REF	34 *	COVER PLATE GSKT	12369G	20000	1
10 *	SEAL LINER	83	14080	REF	35	SUCTION FLANGE	13425	13040	1
11 *	DISCH FLANGE GSKT	13428	20000	1	36	STUD	C0807	15991	2
12	NAME PLATE	38818-021	13990	1	37	HEX NUT	D08	15991	2
13	DRIVE SCREW	BM#04-03	17000	4	38 *	CHECK VALVE ASSY	13426	---	1
14	GREASE CUP	S36	---	1	39	-RIVET	21118-058	---	1
15	PIPE PLUG	P04	15079	1	40	-SMALL WEIGHT	11189B	14990	1
16	INTERMEDIATE	38264-222	13040	1	41	-LARGE WEIGHT	13424	15990	1
17	STUD	C0808	15991	2	42 *	-GASKET	13433	19070	1
18	FLAT WASHER	K08	15991	2	NOT SHOWN:				
19	HEX NUT	D08	15991	2		STRAINER	4917	24001	1
20	HEX HD CAPSCREW	B0605	15991	4		SUCTION STICKER	6588AG	---	1
21	LOCKWASHER	J06	15991	4		DISCHARGE STICKER	6588BJ	---	1
22 *	INTERMEDIATE O-RING	25152-248	---	1		INSTRUCTION TAG	38817-085	---	1
23 *	WEAR PLATE	2643B	15990	1		G-R DECAL	GR-03	---	1
24	CASING DRAIN PLUG	P06	15079	1		PRIMING STICKER	6588AH	---	1
25	LOCKWASHER	J04	15991	2		GREASE CUP INSTR	6588BD	---	1

* INDICATES PARTS RECOMMENDED FOR STOCK

THE GORMAN-RUPP COMPANY • MANSFIELD, OHIO

GORMAN-RUPP OF CANADA LIMITED • ST. THOMAS, ONTARIO, CANADA Printed in U.S.A.

©1999 The Gorman-Rupp Company

**For U.S. and International Warranty Information,
Please Visit www.grpumps.com/warranty**

or call:

U.S.: 419-755-1280

International: +1-419-755-1352

**For Canadian Warranty Information,
Please Visit www.grcanada.com/warranty**

or call:

519-631-2870