



PRIME-AIRE[®] **SERIES**
PUMP MODEL
PA4A60-3029D

MANUAL
PART 2 of 3

PARTS
LIST
WITH
PERFORMANCE CURVE

THE GORMAN-RUPP COMPANY • MANSFIELD, OHIO

GORMAN-RUPP OF CANADA LIMITED • ST. THOMAS, ONTARIO, CANADA Printed in U.S.A.

Register your new
Gorman-Rupp pump online at
www.grpumps.com

Valid serial number and e-mail address required.



The engine exhaust from this product contains chemicals known to the State of California to cause cancer, birth defects or other reproductive harm.

RECORD YOUR PUMP MODEL AND SERIAL NUMBER

Please record your pump model and serial number in the spaces provided below. Your Gorman-Rupp distributor needs this information when you require parts or service.

Pump Model: _____

Serial Number: _____

PERFORMANCE CURVE – SECTION A

RECORDING MODEL AND SERIAL NUMBERS

Please record the pump model and serial number in the spaces provided below and in the separate Installation/Operation Manual accompanying your pump. Your Gorman-Rupp distributor needs this information when you require parts or service.

Pump Model: _____

Serial Number: _____

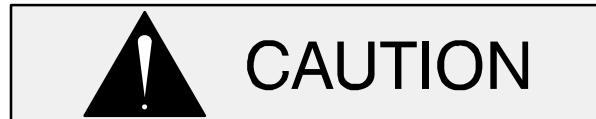
WARRANTY INFORMATION

The pump warranty is provided as part of Gorman-Rupp's support program for customers who operate and maintain their equipment as described in this manual and other accompanying literature. Please note that should the equipment be abused or modified to change its performance beyond the original factory specifications, the warranty will become void and any claim will be denied.

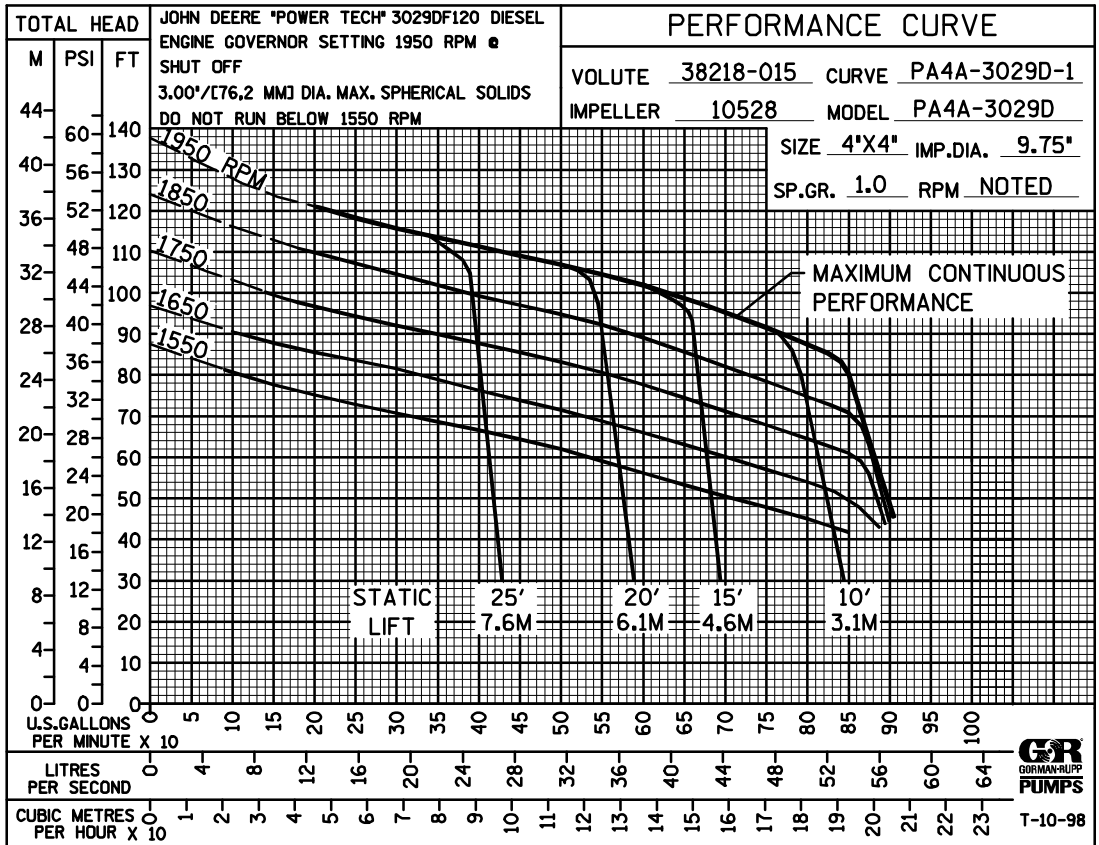
PERFORMANCE CURVE

The performance curve on the following page is based on 70°F (21°C) clear water at sea level, with minimum suction lift. Since pump installations are seldom identical, your performance may be different due to such factors as viscosity, specific gravity, elevation, temperature, and impeller trim.

If your pump serial number is followed by an "N", your pump is **NOT** a standard production model. Contact the Gorman-Rupp Company to verify performance or part numbers.

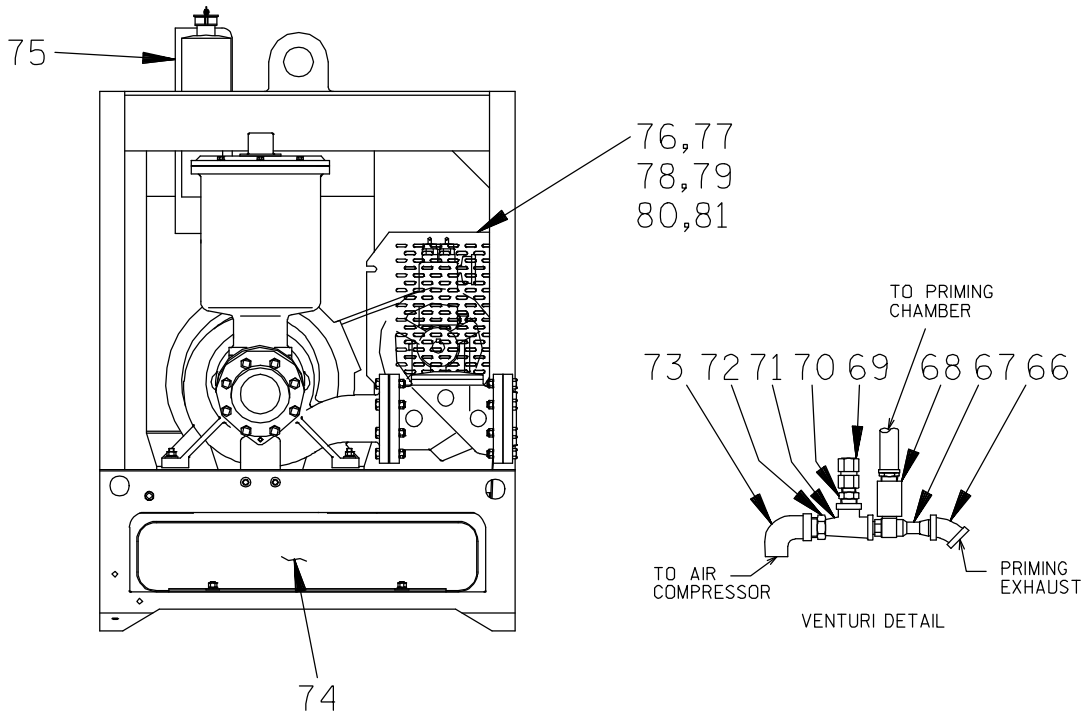
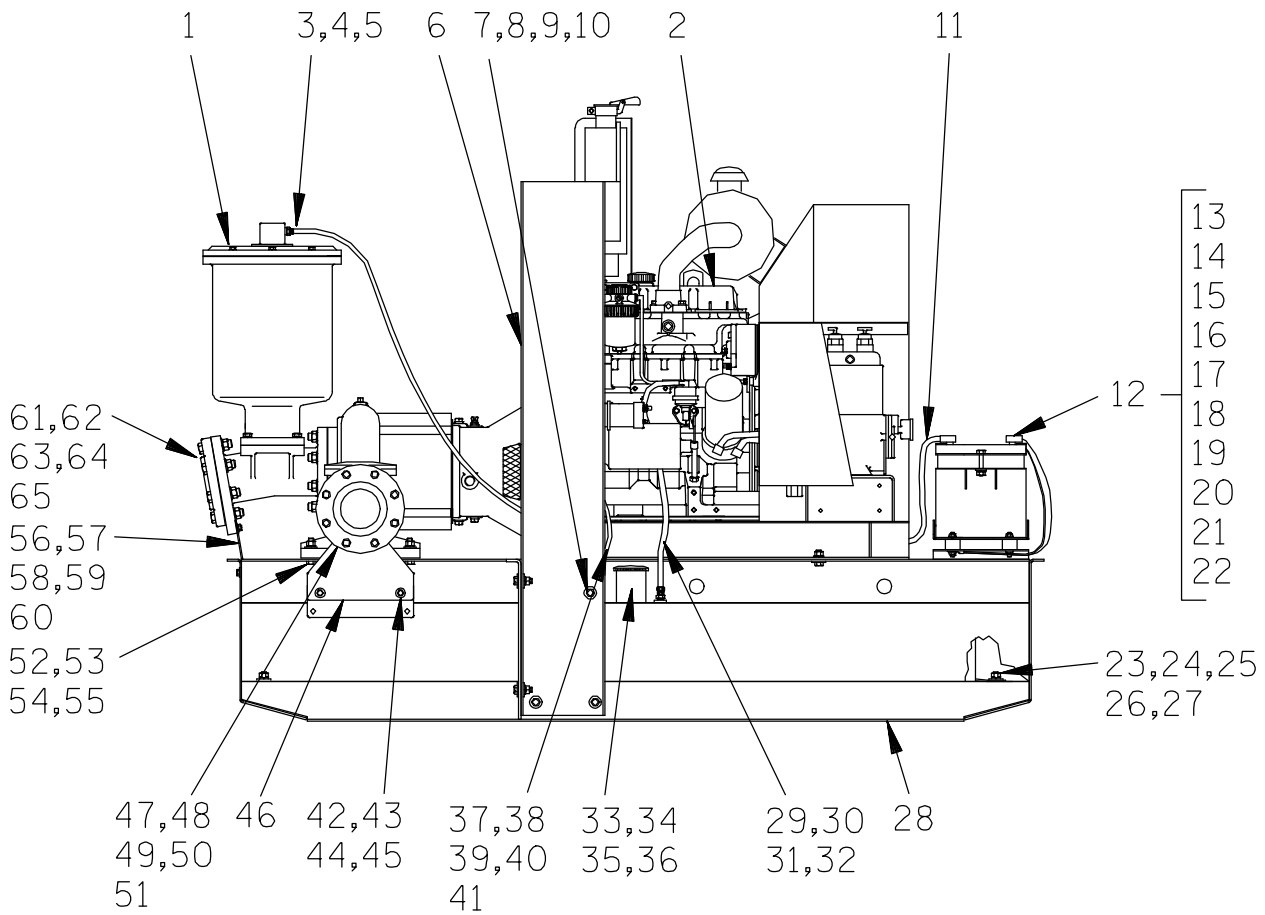


Pump speed and operating condition points must be within the continuous performance range shown on the curve.



Performance Curve – Model PA4A60-3029D

This Page Intentionally Blank



THE GORMAN-RUPP COMPANY • MANSFIELD, OHIO

S/N 1187052 Up
PUMP ISSUE 1

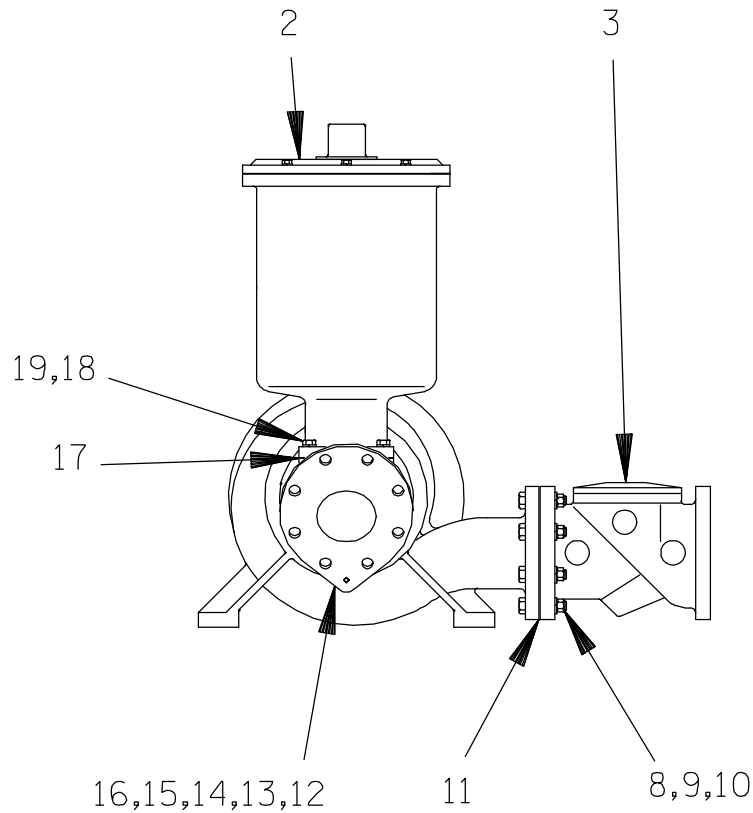
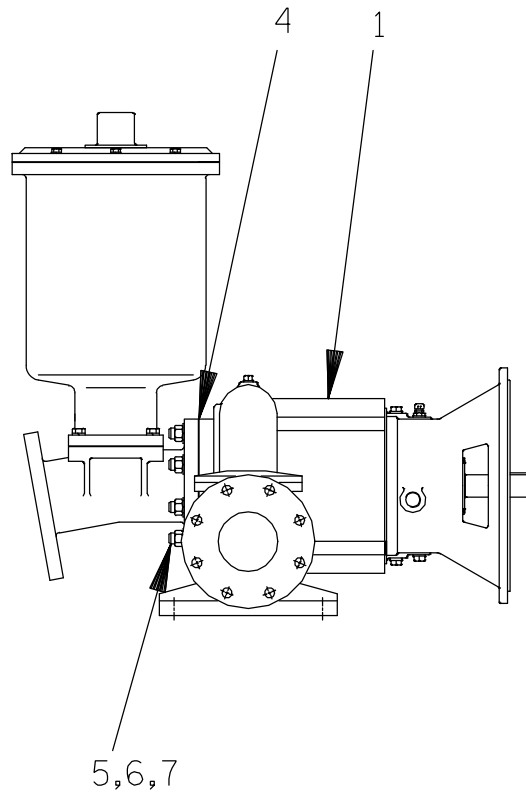
PARTS LIST
Pump Model PA4A60-3029D

If your pump serial number is followed by an "N", your pump is **NOT** a standard production model. Contact the Gorman-Rupp Company to verify part numbers.

ITEM NO.	PART NAME	PART NUMBER	MAT'L CODE	QTY	ITEM NO.	PART NAME	PART NUMBER	MAT'L CODE	QTY
1	PUMP END ASSEMBLY	PA4A60-(SAE 4/10)		1	53	HEX NUT	D08	15991	4
2	JOHN DEERE 3029D ENG	29224-007	----	1	54	LOCKWASHER	J08	15991	4
3	REDUCER BUSHING	AP1608	11999	1	55	FLAT WASHER	K08	15991	4
4	MALE CONNECTOR	26525-020	----	2	56	BRACKET	34167-005	15120	1
5	6' X 1/2" HOSE	18513-113	----	1	57	HEX HD CAPSCREW	B0603 1/2	15991	3
6	LIFTING BAIL	44715-032	24150	1	58	HEX NUT	D06	15991	2
7	HEX HD CAPSCREW	B0806	15991	10	59	LOCKWASHER	J06	15991	3
8	HEX NUT	D08	15991	6	60	FLAT WASHER	K06	15991	5
9	LOCKWASHER	J08	15991	10	61	SUCTION FLANGE	1756	10010	1
10	FLAT WASHER	K08	15991	12	62 *	SUCT FLANGE GSKT	1676G	18000	1
11	POS CABLE ASSY	47311-118	----	1	63	HEX HD CAPSCREW	B1011	15991	8
12	BATTERY BOX ASSY	GRP40-08C	----	1	64	HEX NUT	D10	15991	8
13	-HEX HD CAPSCREW	B0607	15991	2	65	LOCKWASHER	J10	15991	8
14	-FLAT WASHER	K06	15991	2	66	PIPE ELBOW	AG08	11999	1
15	-FLANGED HEX NUT	21765-314	----	2	67	VENTURI	26817-003	----	1
16	-GRND CABLE ASSY	47311-064	----	1	68	PIPE COUPLING	AE08	15079	1
17	-BATTERY BOX LID	42113-012	24150	1	69	RELIEF VALVE	26662-029	----	1
18 *	-12V BATTERY	SEE OPTIONS LIST			70	REDUCER PIPE BUSHING	AP0604	15079	1
19	-BATTERY TAG	38818-506	----	1	71	SERVICE TEE	US06	11999	1
20	-BATTERY BOX	42431-030	24150	1	72	REDUCER PIPE BUSHING	AP0806	15079	1
21	-STUD MOUNT	24631-006	----	4	73	STREET ELBOW	AGS08	11999	1
22	-FLANGED HEX NUT	21765-314	----	8	74	FUEL TANK	46711-082	----	1
23	FUEL TANK RETAINER	33541-039	15120	2	75	MUFFLER GUARD ASSY	42331-057	----	1
24	HEX HD CAPSCREW	B0806	15991	4	76	AIR COMP GUARD ASSY	42381-076	24150	1
25	HEX NUT	D08	15991	4	77	BRACKET	34141-010	15120	1
26	LOCKWASHER	J08	15991	4	78	HEX HD CAPSCREW	B0604	15991	4
27	FLAT WASHER	K08	15991	4	79	HEX NUT	D06	15991	4
28	SKID ASSY	41565-578	24150	1	80	LOCKWASHER	J06	15991	4
29	HOSE .31 X 3'	18513-053	----	1	81	FLAT WASHER	K06	15991	8
30	MALE HOSE END	26525-004	----	1		NOT SHOWN:			
31	HOSE CLAMP	26518-641	----	1		INSTRUCTION DECAL	38818-128	----	1
32	FUEL PICK-UP ASSY	29332-143	----	1		WARNING DECAL	38816-063	----	1
33	FILL NECK	29332-152	----	1		LUBE DECAL	38816-079	----	1
34 *	FILL NECK GSKT	38683-269	19060	1		SUCTION STICKER	6588AG	----	1
35	HEX HD CAPSCREW	B#10-02S	15991	6		DISCHARGE STICKER	6588BJ	----	1
36	FUEL GAUGE/CAP	29332-133	----	1		RPM DECAL	38816-240	----	1
37	FUEL RETURN ASSY	46331-015	24150	1		LIFT DECAL	38816-218	----	3
38	PIPE ELBOW	R04	11999	1		PA DECAL	38812-078	----	2
39	30" LG TUBING	18523-366	----	1		V-BELT TENSION DECAL	38816-049	----	1
40	HOSE CLAMP	26518-641	----	2		WARNING DECAL	2613FE	----	2
41	HOSE BARB FITTING	26523-386	----	1		ENG START-UP TAG	38816-269	----	1
42	HEX HD CAPSCREW	B0603	15991	2		INSTRUCTION TAG	38817-018	----	1
43	HEX NUT	D06	15991	2		G-R 6" DECAL	GR-06	----	3
44	LOCKWASHER	J06	15991	2		LIFT DECAL	38816-175	----	1
45	FLAT WASHER	K06	15991	4		OIL LEVEL DECAL	38816-123	----	1
46	CHECK VLVE BRACKET	33659-037	15120	1		NAME PLATE	38818-127	13000	1
47	DISCHARGE FLANGE	1756	10010	1		DRIVE SCREW	BM#04-03	17000	4
48 *	DISCH FLANGE GSKT	1676G	18000	1		STRAINER	2690C	24000	1
49	HEX HD CAPSCREW	B1011	15991	8		OIL DRAIN ASSY	46342-015	----	1
50	HEX NUT	D10	15991	8		* 12V BATTERY	29331-506	----	1
51	LOCKWASHER	J10	15991	8					
52	HEX HD CAPSCREW	B0809	15991	4					

* INDICATES PARTS RECOMMENDED FOR STOCK

THE GORMAN-RUPP COMPANY • MANSFIELD, OHIO



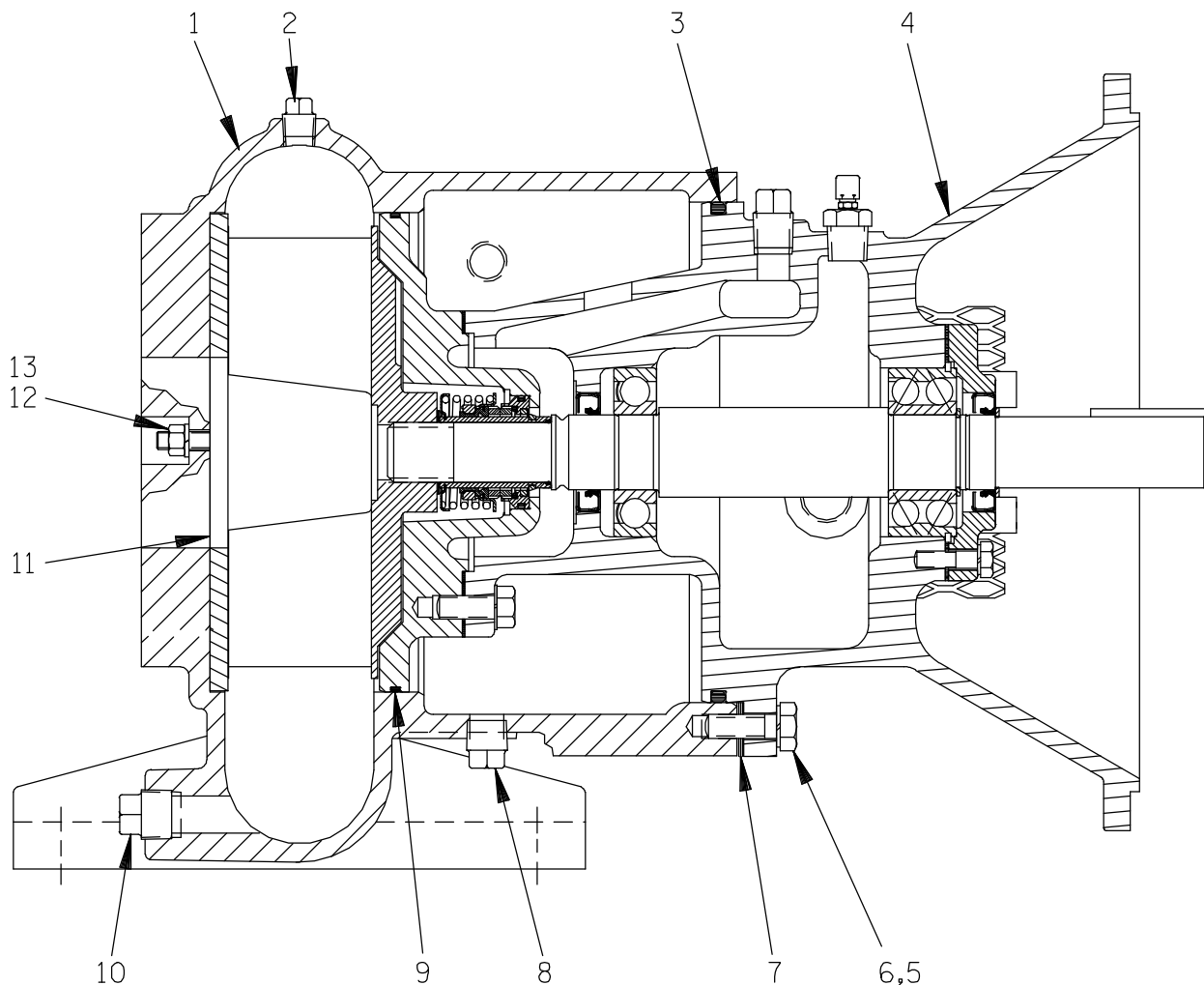
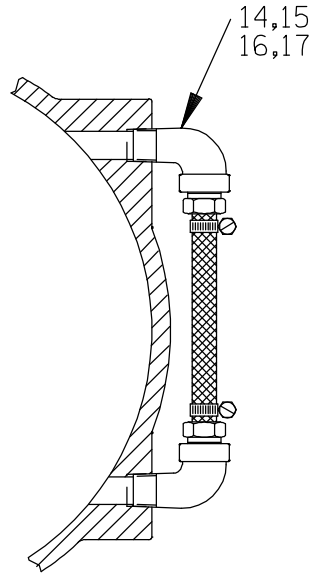
THE GORMAN-RUPP COMPANY • MANSFIELD, OHIO

S/N 1187052 Up
PUMP ISSUE 1

PARTS LIST
PA4A60—(SAE 4/10) Pump Assembly

ITEM NO.	PART NAME	PART NUMBER	MAT'L CODE	QTY
1	PUMP END ASSY	64C60—(SAE 4/10)	---	1
2	PRIMING CHAMBER ASSY	46112—704	---	1
3	CHECK VALVE ASSY	26642—124	---	1
	* —FLAPPER	26688—005	---	1
	* —COVER GASKET	26688—006	---	1
4	* PUMP CASING GSKT	1676G	18000	1
5	STUD	C1211	15991	8
6	HEX NUT	D12	15991	8
7	LOCKWASHER	J12	15991	8
8	HEX HD CAPSCREW	B1011	15991	8
9	HEX NUT	D10	15991	8
10	LOCKWASHER	J10	15991	8
11	* DISCHARGE FLANGE GSKT	1676G	18000	1
12	4" SPOOL FLANGE	38644—802	10000	1
13	COVER PLATE	38244—021	15080	1
14	* COVER PLATE GSKT	38689—037	18000	1
15	HEX HD CAPSCREW	B0804	15991	2
16	LOCKWASHER	J08	15991	2
17	* PRIMING CHAMBER GSKT	38687—053	18000	1
18	HEX HD CAPSCREW	B0807	15991	4
19	LOCKWASHER	J08	15991	4

* INDICATES PARTS RECOMMENDED FOR STOCK



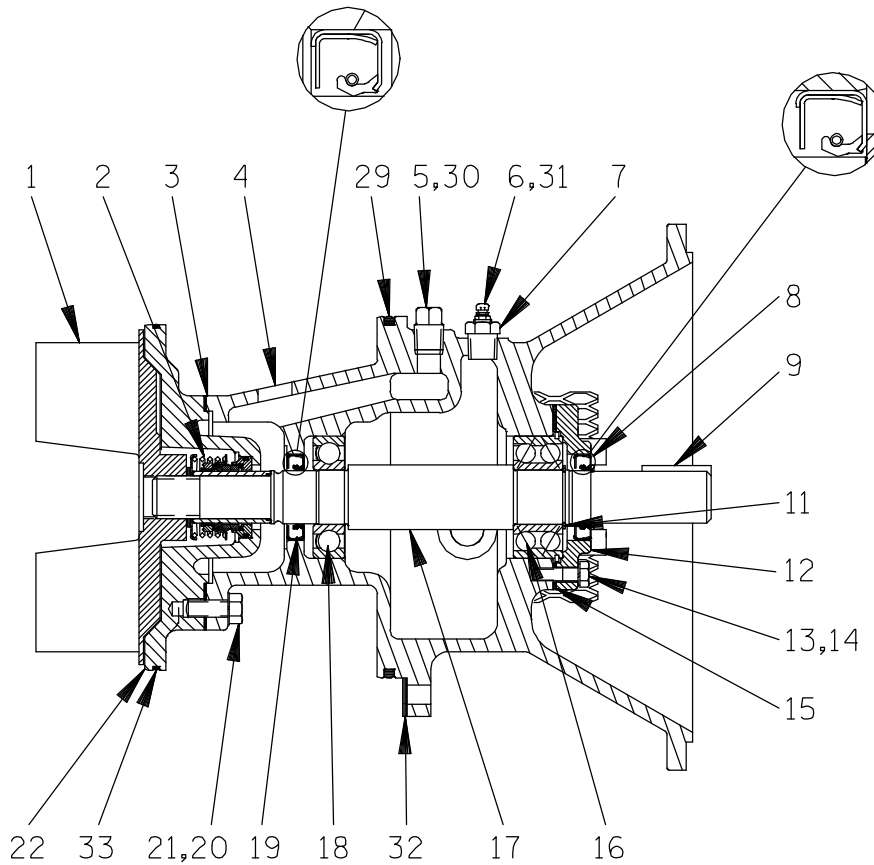
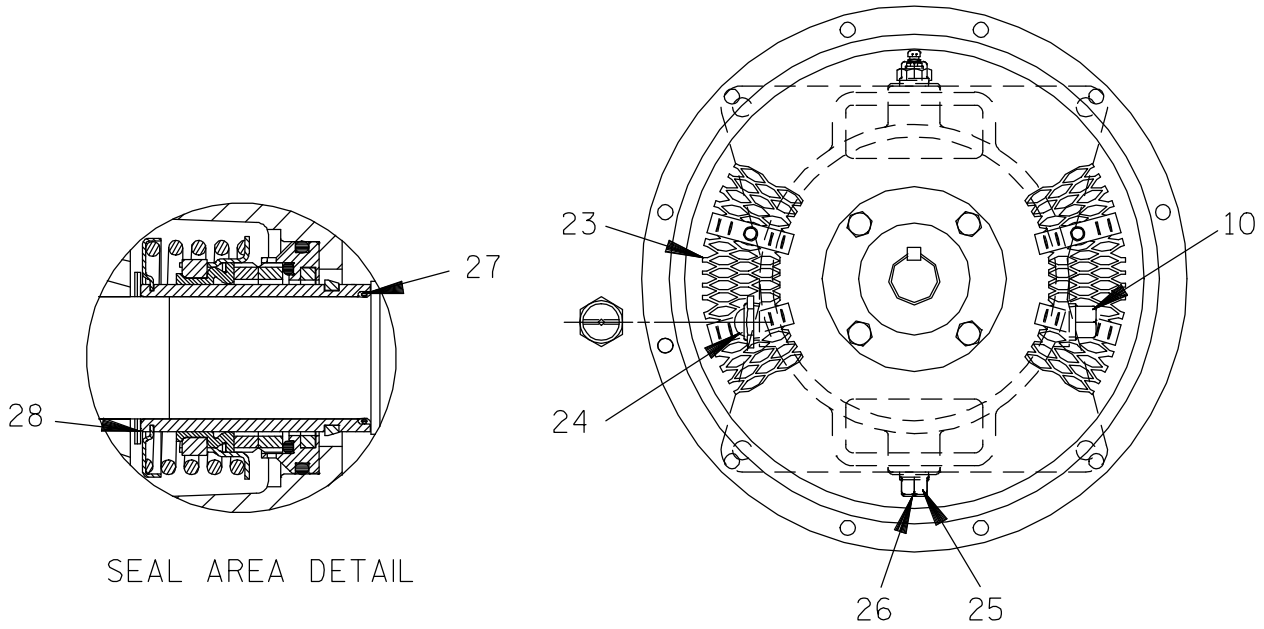
THE GORMAN-RUPP COMPANY • MANSFIELD, OHIO

S/N 1187052 Up
PUMP ISSUE 1

PARTS LIST
64C60—(SAE 4/10) Pump End Assembly

ITEM NO.	PART NAME	PART NUMBER	MAT'L CODE	QTY	ITEM NO.	PART NAME	PART NUMBER	MAT'L CODE	QTY
1	PUMP CASING	38218-015	10000	1	14	STREET ELBOW	RS06	11999	2
2	PIPE PLUG	P06	15079	1	15	MALE CONNECTOR	26523-389	----	2
3 *	INTERMEDIATE O-RING	S1674	----	REF	16	HOSE CLAMP	26518-642	----	2
4	REPAIR ROTATING ASSY	44163-229	----	1	17	4.25" LONG VINYL HOSE	18523-702	----	1
5	HEX HD CAPSCREW	B0806	15991	4	NOT SHOWN:				
6	LOCKWASHER	J08	15991	4					
7 *	ROT ASSY SHIM SET	13130	17000	4					
8	DRAIN PLUG	P08	15079	1					
9 *	SEAL PLATE O-RING	25154-273	----	REF					
10	CASING DRAIN PLUG	P12	15079	1					
11 *	WEAR PLATE	10532B	15990	1					
12	HEX NUT	D06	15991	2					
13	LOCKWASHER	J06	15991	2					
						DRIVE SCREW	BM#04-03	17000	4
						OIL LEVEL DECAL	38816-123	----	1
						SUCTION STICKER	6588AG	----	1
						DISCHARGE STICKER	6588BJ	----	1
						WARNING DECAL	2613FE	----	1
						LUBE DECAL	38816-079	----	1

* INDICATES PARTS RECOMMENDED FOR STOCK



THE GORMAN-RUPP COMPANY • MANSFIELD, OHIO

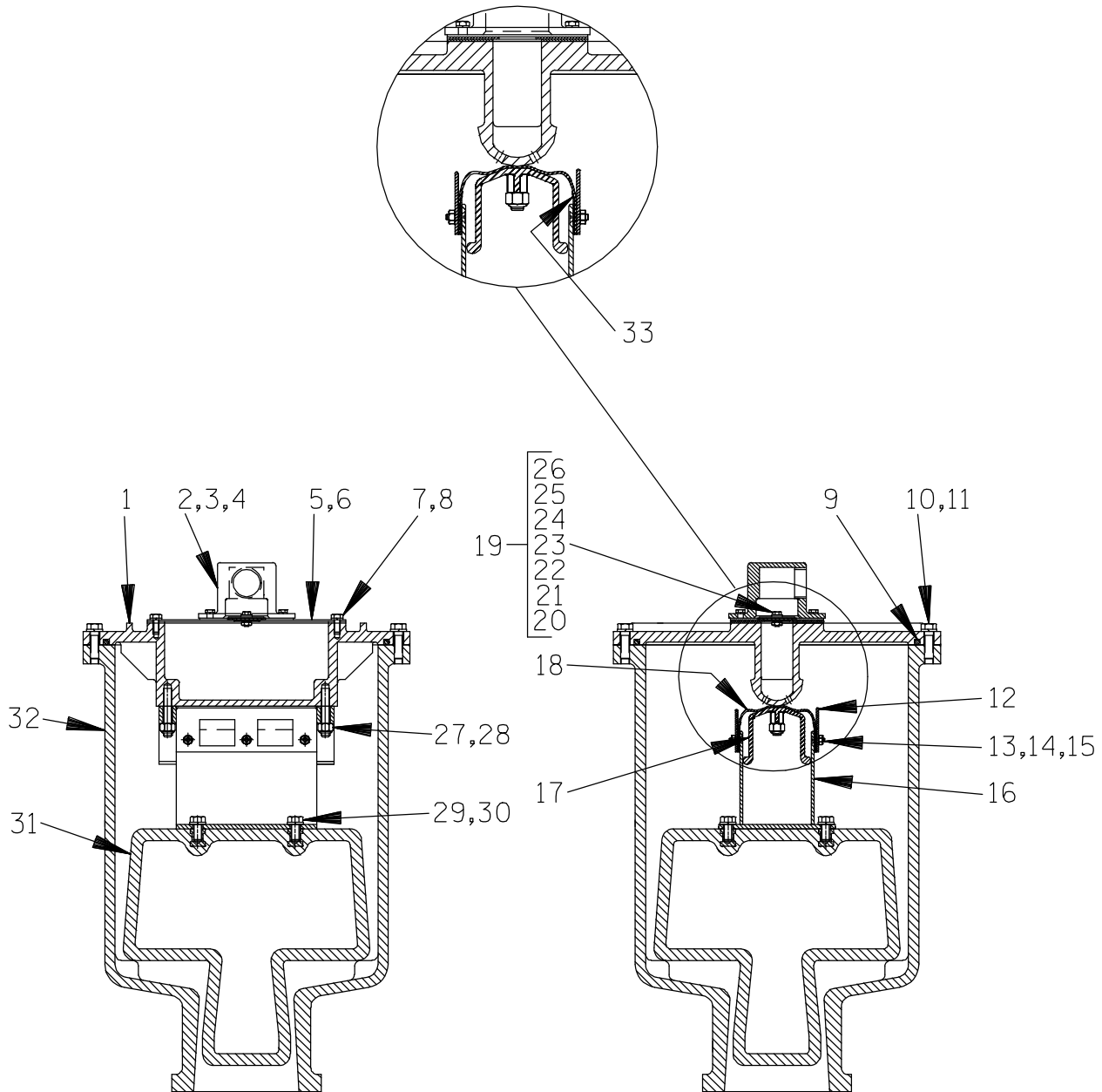
S/N 1187052 Up
PUMP ISSUE 1

PARTS LIST
44163—229 REPAIR ROTATING ASSEMBLY

ITEM NO.	PART NAME	PART NUMBER	MAT'L CODE	QTY	ITEM NO.	PART NAME	PART NUMBER	MAT'L CODE	QTY
1 *	IMPELLER	10528	11010	1	18 *	INNER BALL BEARING	23276—009	---	1
2 *	SEAL ASSY	46513—151	---	1	19 *	OIL SEAL	S1352	---	1
3 *	SEAL PLATE GSKT	10959G	20000	1	20	HEX HD CAPSCREW	B0805 1/2	15991	4
4	INTERMEDIATE BRACKET	38266—007	10000	1	21	LOCKWASHER	J08	15991	4
5	VENTED PLUG	4823A	15079	1	22	SEAL PLATE	38272—234	10010	1
6	AIR VENT	S1530	---	1	23	INTERM GUARD ASSY	42381—504	---	2
7	REDUCER PIPE BUSHING	AP0802	15079	1	24	OIL LVL SIGHT GAUGE	S1471	---	1
8 *	OIL SEAL	S1352	---	1	25	INTERM DRAIN PLUG	P08	15079	1
9 *	SHAFT KEY	N0610	15990	1	26	SEAL CVTY DRAIN PLUG	P08	15079	1
10	PIPE PLUG	P12	15079	1	27 *	SHAFT SLEEVE O-RING	25154—022	---	REF
11	BRG SNAP RING	S244	---	1	28 *	IMPELLER ADJ SHIM SET	37J	17090	REF
12	BEARING CAP	38322—215	10010	1	29 *	INTERMEDIATE O-RING	S1674	---	1
13	HEX HD CAPSCREW	B0605	15991	4	30	SHIPPING PLUG	11495B	15079	1
14	LOCKWASHER	J06	15991	4	31	SHIPPING PLUG	11495B	15079	1
15 *	BEARING CAP GSKT	38683—248	18000	1	32 *	ROT ASSY ADJ SHIM SET	13130	17000	4
16 *	OUTER BALL BEARING	S1040	---	1	33 *	SEAL PLATE O-RING	25154—273	---	1
17 *	IMPELLER SHAFT	38514—561	1706H	1					

* INDICATES PARTS RECOMMENDED FOR STOCK

VALVE DETAIL

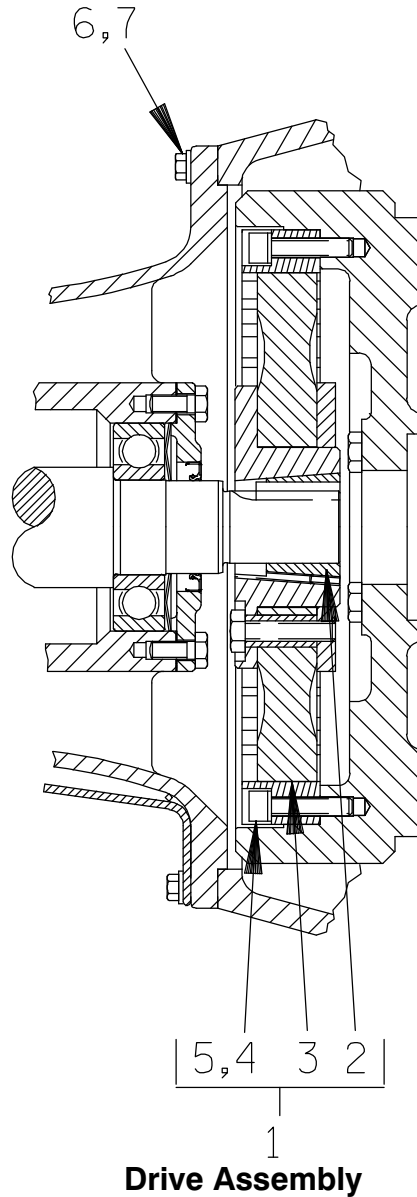


S/N 1187052 Up
PUMP ISSUE 1

PARTS LIST
46112—704 Peeler Type Priming Valve

ITEM NO.	PART NAME	PART NUMBER	MAT'L CODE	QTY	ITEM NO.	PART NAME	PART NUMBER	MAT'L CODE	QTY
1	PRIMING CHAMBER LID	38346-615	1300U	1	18	HEX NUT	D#10	17000	4
2	PEELER VALVE NECK	38349-410	10000	1	19	CHECK VALVE ASSY	46411-112	---	1
3	HEX HD CAPSCREW	B0403 1/2	15991	4	20 *	-CHECK VALVE	38671-413	19020	1
4	LOCKWASHER	J04	15991	4	21	-LOCKWASHER	J#10	17000	1
5 *	VALVE PLATE GSKT	38687-555	19060	1	22	-HEX NUT	D#10	17000	1
6	VALVE PLATE	33541-040	17000	1	23	-FLATWASHER	21161-810	---	1
7	HEX HD CAPSCREW	B0402 1/2	15991	4	24	-HEX HD CAPSCREW	B#10-02	17000	1
8	LOCKWASHER	J04	15991	4	25	-FLATWASHER	21161-811	---	1
9 *	LINEAR O-RING .25 X 3.9'	18512-056	---	1	26	-SEALING WASHER	25123-056	---	1
10	HEX HD CAPSCREW	B0605	15991	12	27	STUD	C0607	17000	2
11	LOCKWASHER	J06	15991	12	28	HEX LOCK NUT	DD06	17000	2
12	GUIDE PLATE	33522-009	17000	2	29	HEX HD CAPSCREW	B0603	17000	4
13	FLAT HD CAPSCREW	F#10-03	17000	6	30	LOCKWASHER	J06	17000	4
14	LOCKWASHER	J#10	17000	6	31 *	PRIMING VALVE FLOAT	38349-412	19220	1
15	HEX NUT	D#10	17000	6	32	PRIMING CHAMBER	38343-018	10000	1
16	VLV STRAP BRKT ASSY	41881-597	2415X	1	33	VLV STRAP PROTECTOR	33271-019	19000	2
17	CLAMP PLATE	38349-406	14000	1					

* INDICATES PARTS RECOMMENDED FOR STOCK



Drive Assembly

ITEM NO.	PART NAME	PART NUMBER	MAT'L CODE	QTY
1	COUPLING KIT	48112-001	---	1
2	-BUSHING	24131-345	---	1
3	-COUPLING ASSY	44165-011	---	1
4	-LOCKWASHER	21171-536	---	8
5	-SOCKET HD CAPSCREW	22644-220	---	8
6	HEX HD CAPSCREW	22645-164	---	12
7	LOCKWASHER	21171-511	---	12

**For U.S. and International Warranty Information,
Please Visit www.grpumps.com/warranty
or call:
U.S.: 419-755-1280
International: +1-419-755-1352**

**For Canadian Warranty Information,
Please Visit www.grcanada.com/warranty
or call:
519-631-2870**