

ACDE

Use With: OM-04760  
MR-04885

PUBLICATION NUMBER PL-04952-01  
DECEMBER 30, 1998  
REV. A 12/30/98  
Supersedes: OM-03809-01



**PUMP MODEL**  
**13E2-LPA2 S/G**

**MANUAL**  
**PART 2 of 3**

**PARTS**  
**LIST**

**WITH**  
**PERFORMANCE CURVE**

**THE GORMAN-RUPP COMPANY • MANSFIELD, OHIO**

GORMAN-RUPP OF CANADA LIMITED • ST. THOMAS, ONTARIO, CANADA Printed in U.S.A.

©Copyright by the Gorman-Rupp Company



**The engine exhaust from this product contains chemicals known to the State of California to cause cancer, birth defects or other reproductive harm.**

## PERFORMANCE CURVE – SECTION A

### RECORDING MODEL AND SERIAL NUMBERS

Please record the pump model and serial number in the spaces provided below and in the separate Installation/Operation Manual accompanying your pump. Your Gorman-Rupp distributor needs this information when you require parts or service.

Pump Model: \_\_\_\_\_

Serial Number: \_\_\_\_\_

### WARRANTY INFORMATION

The pump warranty is provided as part of Gorman-Rupp's support program for customers who operate and maintain their equipment as described in this manual and other accompanying literature. Please note that should the equipment be abused or modified to change its performance beyond the original factory specifications, the warranty will become void and any claim will be denied.

### PERFORMANCE CURVES

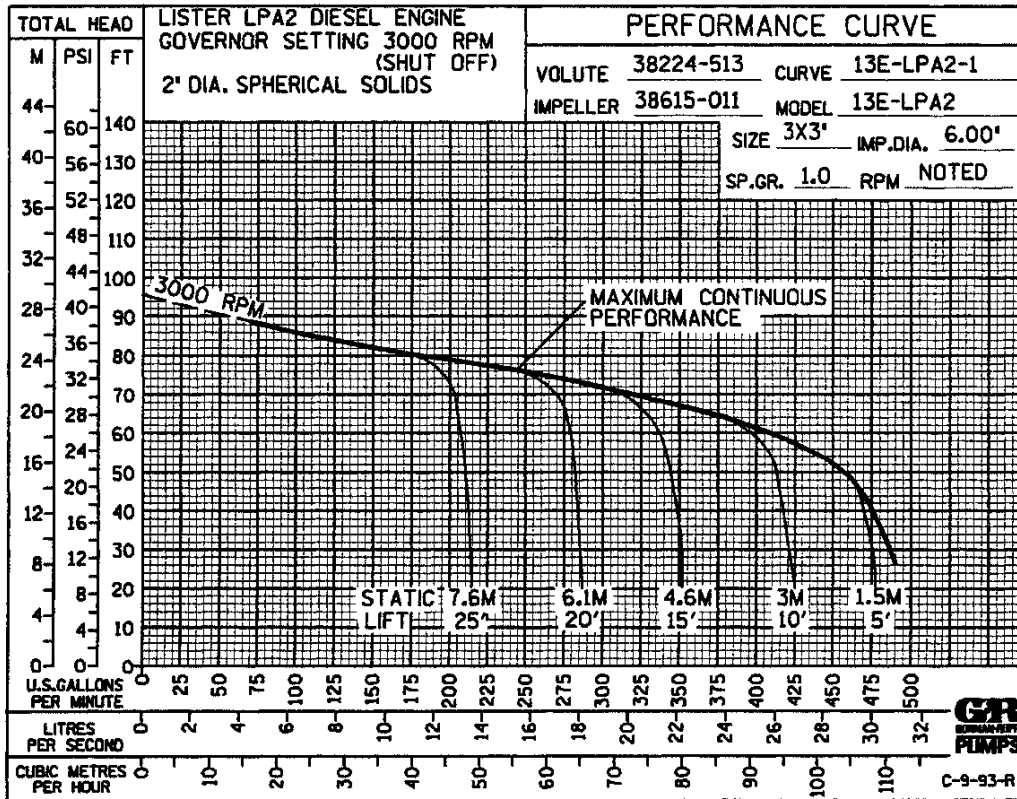
The performance curves on the following page are based on 70° F (21° C) clear water at sea level. Since pump installations are seldom identical, your performance may be different due to such factors as viscosity, specific gravity, elevation, temperature, and impeller trim.

If your pump serial number is followed by an "N", your pump is **NOT** a standard production model. Contact the Gorman-Rupp Company to verify performance or part numbers.

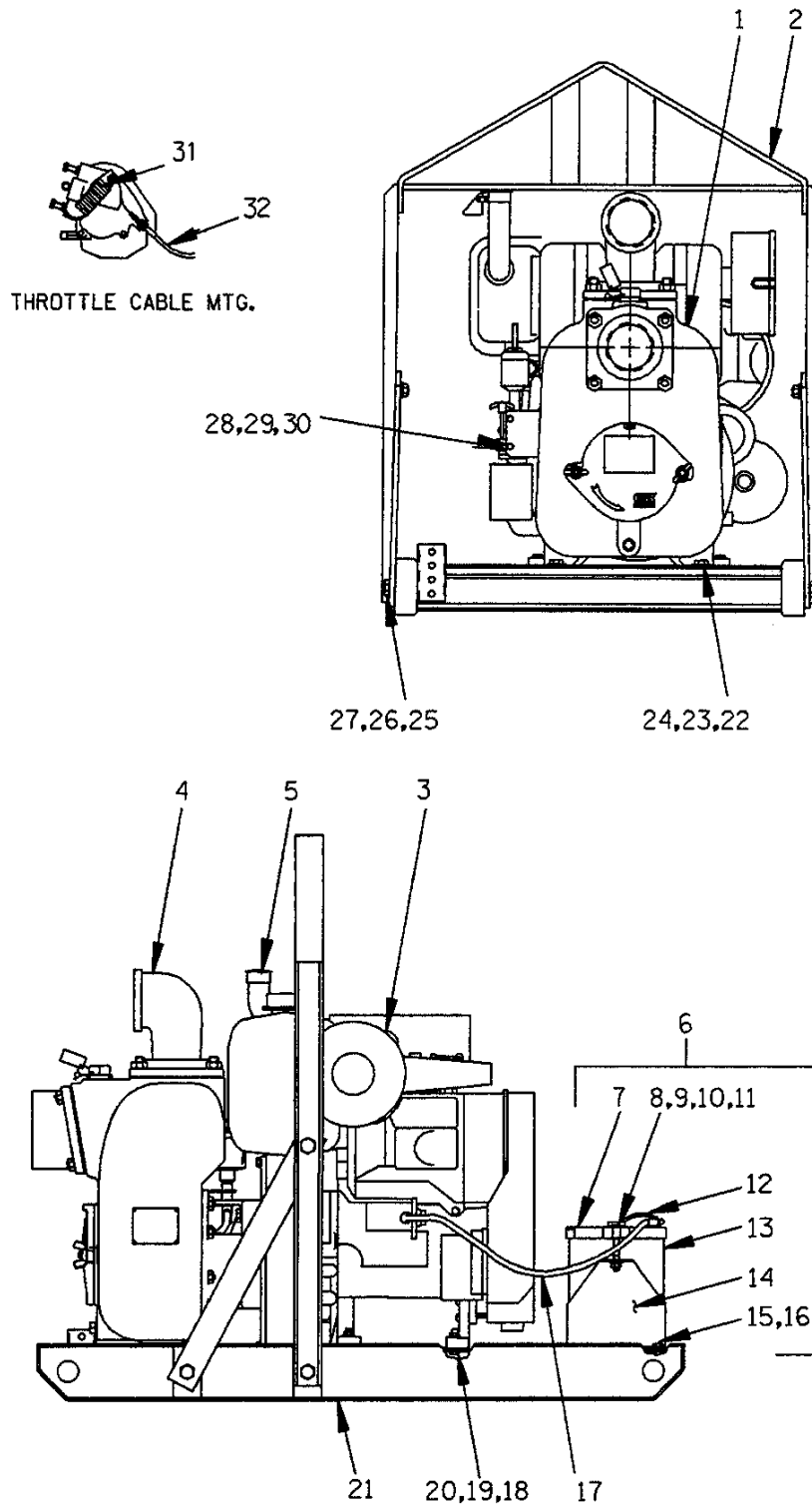


Pump speed and operating condition points must be within the continuous performance range shown on the curve(s).

**This Page Intentionally Blank**



Performance Curve – Model 13E2-LPA2 S/G



**THE GORMAN-RUPP COMPANY • MANSFIELD, OHIO**

GORMAN-RUPP OF CANADA LIMITED • ST. THOMAS, ONTARIO, CANADA Printed in U.S.A.

©Copyright by the Gorman-Rupp Company

# 13E2-LPA2 S/G

S/N 1007053 UP

PUMP ISSUE 1

If your pump serial number is followed by an "N", your pump is NOT a standard production model. Contact the Gorman-Rupp Company to verify part numbers.

ITEM NO.	PART NAME	PART NUMBER	MAT'L CODE	QTY
1	PUMP END ASSY	13E2	---	1
2	LIFTING BAIL	44714-047	24150	1
3	LISTER LPA2 ENGINE	29231-111	---	1
4	STREET ELBOW	RS48	11999	1
5	WEATHER CAP	S624	---	1
6	BATTERY BOX ASSY	GRP40-02A	---	1
7	- BATTERY FRAME	8355B	24000	1
8	- HEX HD CAPSCREW	B0612	15991	2
9	- FLAT WASHER	K06	15991	2
10	- FLANGED HEX NUT	21765-314	---	2
11	- BATTERY TAG	38818-513	---	1
12	- GROUND CABLE ASSY	5795AC	24040	1
13	* - 12V BATTERY	SEE OPTIONS		
14	- BATTERY BOX	8356B	24000	1
15	- HEX HD CAPSCREW	B0604	15991	4
16	- FLANGED HEX NUT	21765-314	---	4
17	24" 1/0 CABLE ASSY	47311-106	---	1
18	HEX HD CAPSCREW	B0707	15991	4
19	LOCKWASHER	J07	15991	4
20	HEX NUT	D07	15991	4
21	COMBINATION BASE	41566-108	24150	1
22	HEX HD CAPSCREW	B0806	15991	2
23	LOCKWASHER	J08	15991	2
24	HEX NUT	D08	15991	2
25	HEX HD CAPSCREW	B1006	15991	6
26	LOCKWASHER	J10	15991	6
27	HEX NUT	D10	15991	6
28	RD HD MACHINE SCREW	CF#08-02	15991	2
29	LOCKWASHER	J#08	15991	2
30	HEX NUT	D08	15991	2
31	SPRING	24641-010	---	1
32	CABLE ASSY	44232-034	---	1
NOT SHOWN:				
	WARNING DECAL	2613FE	---	1
OPTIONAL:				
	* 12V BATTERY	29331-513	---	1
	WHEEL KIT	GRP30-231E	---	1
	CLEVIS TONGUE WHEEL KIT	GRP30-47A	---	1

\* INDICATES PARTS RECOMMENDED FOR STOCK

## THE GORMAN-RUPP COMPANY • MANSFIELD, OHIO

GORMAN-RUPP OF CANADA LIMITED • ST. THOMAS, ONTARIO, CANADA Printed in U.S.A.

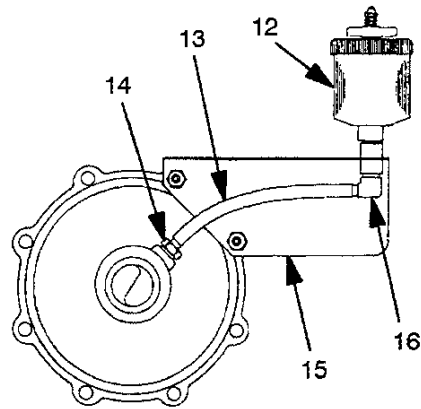
©Copyright by the Gorman-Rupp Company

ACDE

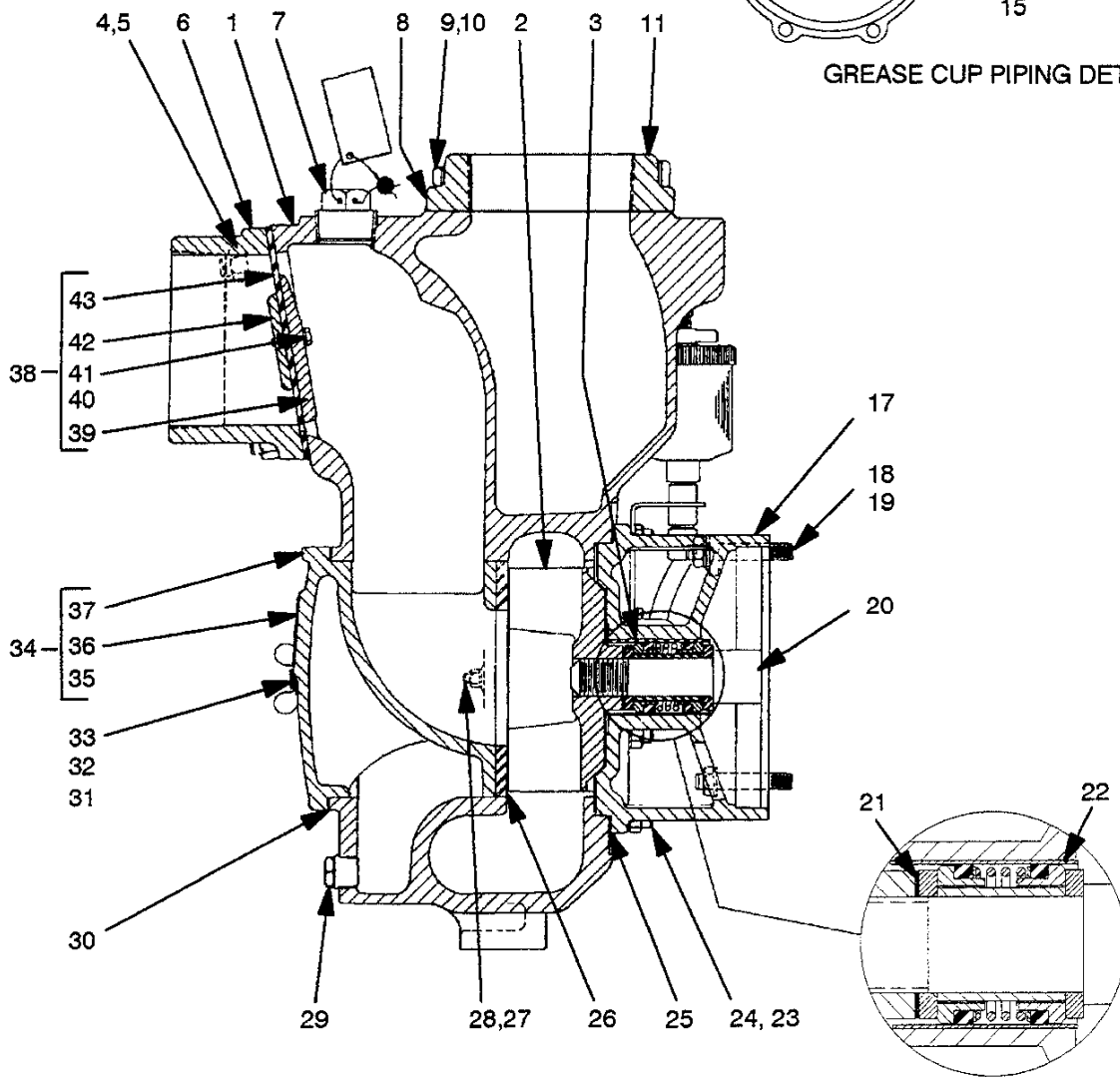
# 13E2-LPA2 S/G

S/N 1007053 UP

PUMP ISSUE 1



GREASE CUP PIPING DETAIL



SEAL DETAIL

## THE GORMAN-RUPP COMPANY • MANSFIELD, OHIO

GORMAN-RUPP OF CANADA LIMITED • ST. THOMAS, ONTARIO, CANADA Printed in U.S.A.

©Copyright by the Gorman-Rupp Company

NOVEMBER 20, 1996

REV. A 12/30/98

3 of 6

Page 10.3 E8.3



# 13E2 - LPA2 S/G

S/N 1007053 UP

PUMP ISSUE 1

ITEM NO.	PART NAME	PART NUMBER	MAT'L CODE	QTY	ITEM NO.	PART NAME	PART NUMBER	MAT'L CODE	QTY
1	PUMP CASING	38224-513	10010	1	27	LOCKWASHER	J04	15991	2
2 *	IMPELLER	38615-011	10010	1	28	HEX NUT	D04	15991	2
3 *	SEAL ASSY	GS1000C	---	1	29	CASING DRAIN PLUG	P08	15079	1
4	STUD	C0808	15991	4	30 *	COVER PLATE GSKT	38682-015	20000	1
5	HEX NUT	D08	15991	4	31	STUD	C0808	15991	2
6	SUCTION FLANGE	38645-201	10010	1	32	FLAT WASHER	K08	15991	2
7	FILL PLUG ASSY	48271-065	---	1	33	COVER WING NUT	BB08	15991	2
8 *	DISCH FLANGE GSKT	38687-009	20000	1	34	COVER PLATE ASSY	42111-911	---	1
9	STUD	C1008	15991	4	35	-WARNING PLATE	2613EV	13990	1
10	HEX NUT	D10	15991	4	36	-DRIVE SCREW	BM#04-03	15990	4
11	DISCHARGE FLANGE	38644-202	10010	1	37	-BACK COVER PLATE	NOT AVAILABLE		1
12 *	GREASE CUP	S1509	---	1	38	CHECK VALVE ASSY	46413-029	---	1
13 *	TUBING	31411-241	19550	1	39 *	-VALVE WEIGHT	4718	10010	1
14	MALE CONNECTOR	26171-013	---	1	40	-LOCKWASHER	J04	17000	2
15	MOUNTING BRACKET	41881-340	24150	1	41	-HEX HD CAPSCREW	B0403-1/2	17000	2
16	MALE ELBOW	26171-038	---	1	42 *	-VALVE WEIGHT	19	10010	1
17	INTERMEDIATE	5B	10010	1	43 *	-CHECK VALVE GSKT	38671-626	19070	1
18	HEX HD CAPSCREW	B0708	15991	4	NOT SHOWN:				
19	LOCKWASHER	J07	15991	4	NAME PLATE	38818-021	13990		1
20	STUB SHAFT ASSY	44111-005	24150	REF	DRIVE SCREW	BM#04-03	15990		4
21 *	IMP ADJ SHIM SET	2X	17090	REF	STRAINER	4917	24001		1
22 *	SEAL LINER	83	14080	REF	SUCTION STICKER	6588AG	---		1
23	STUD	C0606	15991	8	DISCHARGE STICKER	6588BJ	---		1
24	HEX NUT	D06	15991	8	PRIMING STICKER	6588AH	---		1
25 *	CASING GSKT SET	48211-022	---	1					
26 *	WEAR PLATE ASSY	46451-302	24150	1					

\* INDICATES PARTS RECOMMENDED FOR STOCK

## THE GORMAN-RUPP COMPANY • MANSFIELD, OHIO

GORMAN-RUPP OF CANADA LIMITED • ST. THOMAS, ONTARIO, CANADA Printed in U.S.A.

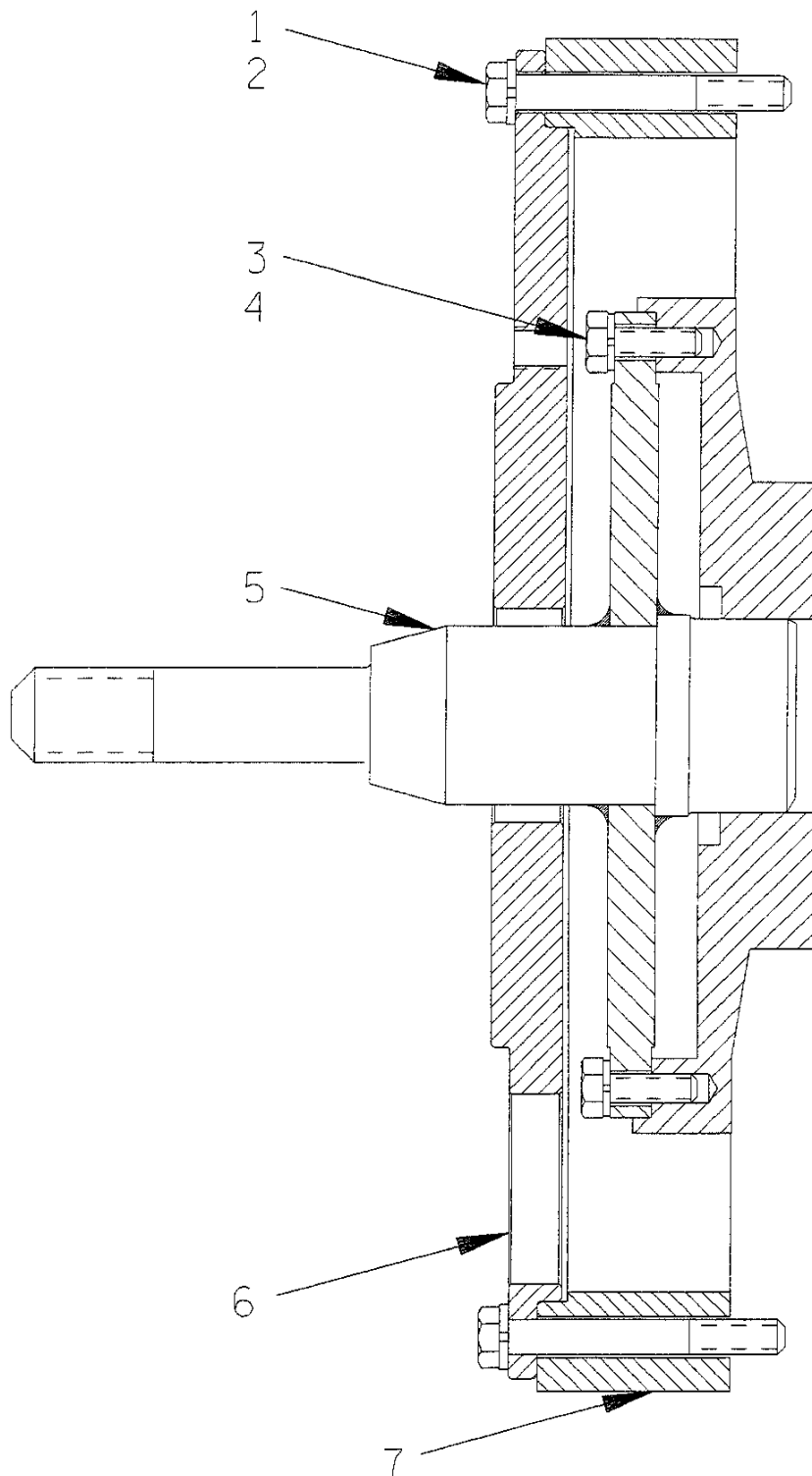
©Copyright by the Gorman-Rupp Company

ACDE

# 13E2-LPA2 S/G

S/N 1007053 UP

PUMP ISSUE 1



## THE GORMAN-RUPP COMPANY • MANSFIELD, OHIO

GORMAN-RUPP OF CANADA LIMITED • ST. THOMAS, ONTARIO, CANADA Printed in U.S.A.

©Copyright by the Gorman-Rupp Company

NOVEMBER 20, 1996

REV. A 12/30/98

5 of 6

Page 10.3 E8.3

# 13E2 - LPA2 S/G

S/N 1007053 UP

PUMP ISSUE 1

ITEM NO.	PART NAME	PART NUMBER	MAT'L CODE	QTY
1	HEX HD CAPSCREW	22645-174	---	8
2	LOCKWASHER	21171-511	---	8
3	HEX HD CAPSCREW	22645-135	---	6
4	LOCKWASHER	21171-510	---	6
5	* STUB SHAFT ASSY	44111-005	24150	1
6	BELLHOUSING ADAPTOR	31741-008	15990	1
7	LISTER ENGINE SPACER RING	SUPPLIED W/ENGINE		REF

\* INDICATES PARTS RECOMMENDED FOR STOCK

**THE GORMAN-RUPP COMPANY • MANSFIELD, OHIO**

GORMAN-RUPP OF CANADA LIMITED • ST. THOMAS, ONTARIO, CANADA Printed in U.S.A.

©Copyright by the Gorman-Rupp Company

**For U.S. and International Warranty Information,  
Please Visit [www.grpumps.com/warranty](http://www.grpumps.com/warranty)**

**or call:**

**U.S.: 419-755-1280**

**International: +1-419-755-1352**

**For Canadian Warranty Information,  
Please Visit [www.grcanada.com/warranty](http://www.grcanada.com/warranty)**

**or call:**

**519-631-2870**

**THE GORMAN-RUPP COMPANY • MANSFIELD, OHIO**

**GORMAN-RUPP OF CANADA LIMITED • ST. THOMAS, ONTARIO, CANADA**