



**PUMP MODELS**  
**13A52-CH13**  
**13A52-CH13 S/G**

**MANUAL**  
**PART 2 of 3**

**PARTS**  
**LIST**  
**WITH**  
**PERFORMANCE CURVE**

**THE GORMAN-RUPP COMPANY • MANSFIELD, OHIO**

**GORMAN-RUPP OF CANADA LIMITED • ST. THOMAS, ONTARIO, CANADA** Printed in U.S.A.

©Copyright by the Gorman-Rupp Company



The engine exhaust from this product contains chemicals known to the State of California to cause cancer, birth defects or other reproductive harm.

## PERFORMANCE CURVE – SECTION A

### RECORDING MODEL AND SERIAL NUMBERS

Please record the pump model and serial number in the spaces provided below and in the separate Installation/Operation Manual accompanying your pump. Your Gorman-Rupp distributor needs this information when you require parts or service.

Pump Model: \_\_\_\_\_

Serial Number: \_\_\_\_\_

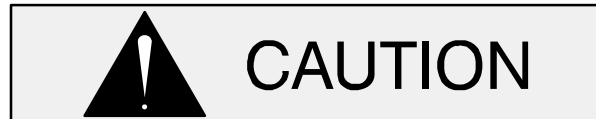
### WARRANTY INFORMATION

The pump warranty is provided as part of Gorman-Rupp's support program for customers who operate and maintain their equipment as described in this manual and other accompanying literature. Please note that should the equipment be abused or modified to change its performance beyond the original factory specifications, the warranty will become void and any claim will be denied.

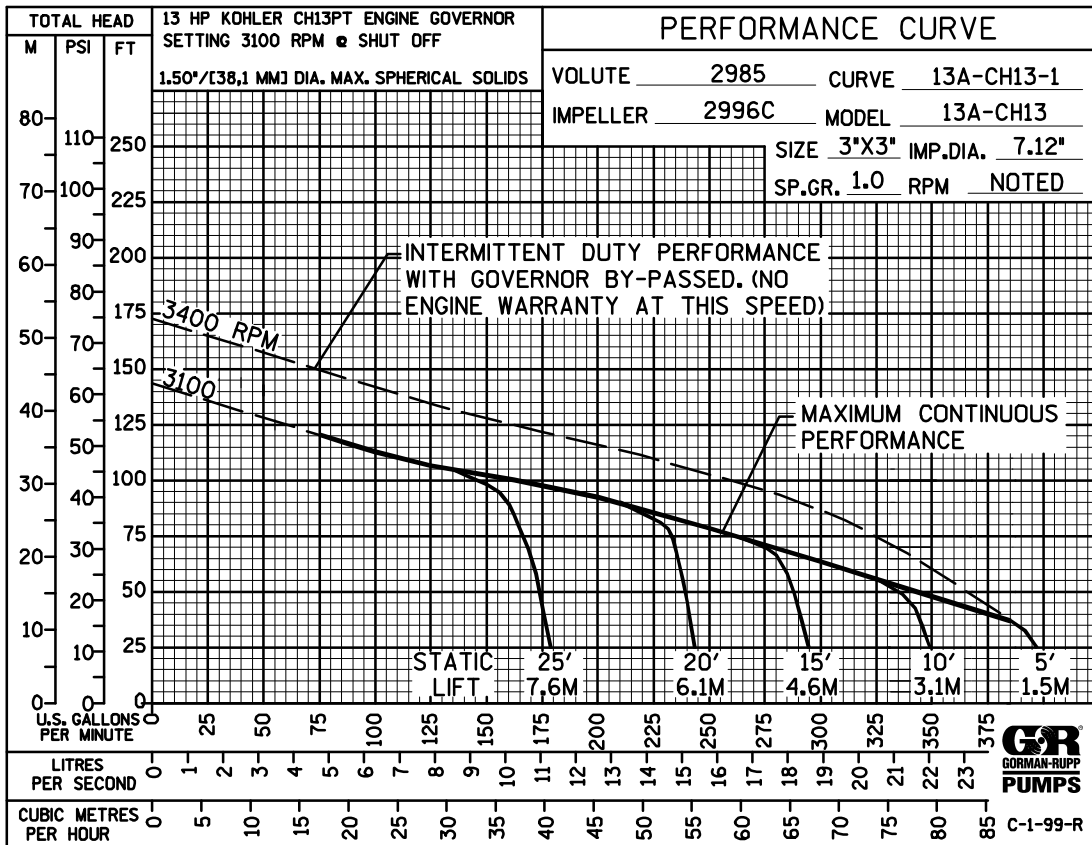
### PERFORMANCE CURVES

The performance curves on the following page are based on 70° F (21° C) clear water at sea level. Since pump installations are seldom identical, your performance may be different due to such factors as viscosity, specific gravity, elevation, temperature, and impeller trim.

If your pump serial number is followed by an "N", your pump is **NOT** a standard production model. Contact the Gorman-Rupp Company to verify performance or part numbers.



Pump speed and operating condition points must be within the continuous performance range shown on the curve(s).

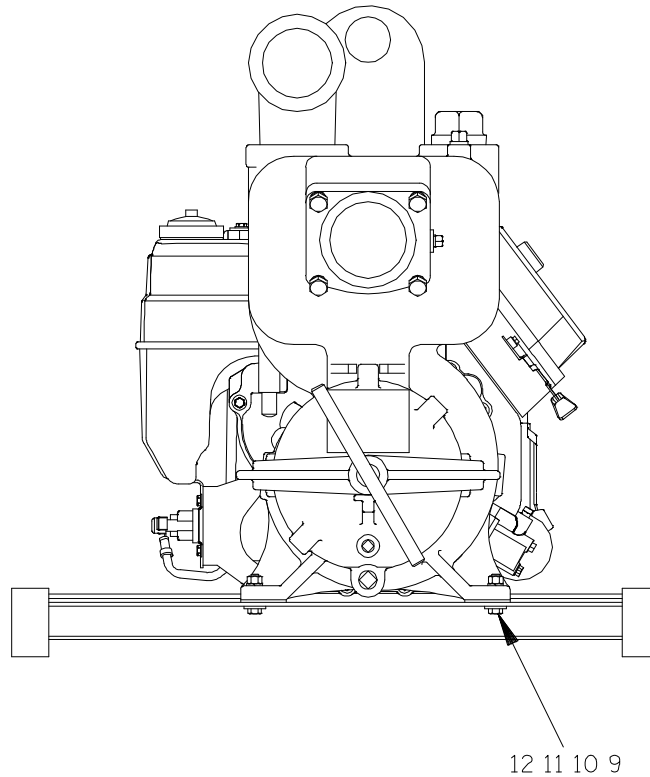
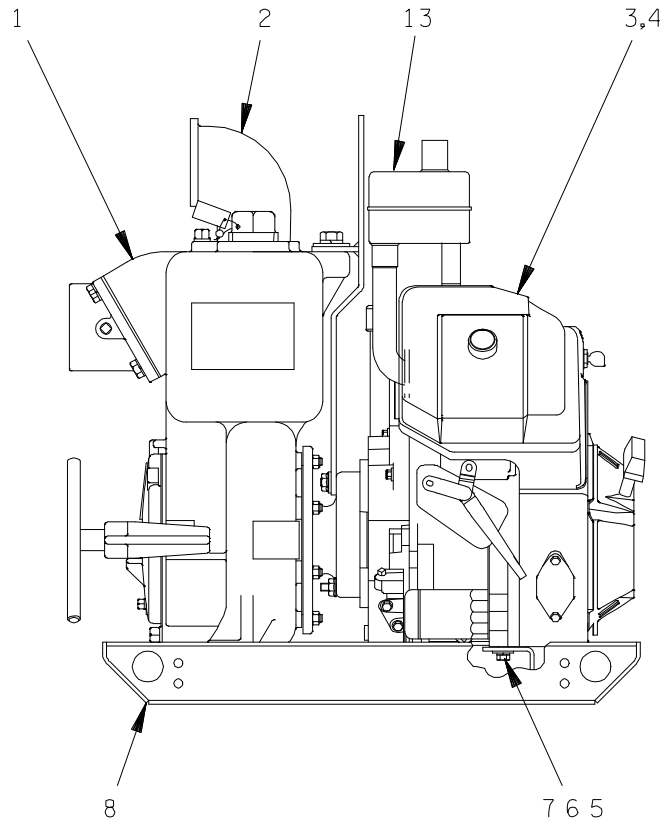


Performance Curve – Model 13A52-CH13 And 13A52 CH13 S/G

# 13A52-CH13 13A52-CH13 S/G

S/N 1157873 UP

PUMP ISSUE 1



## THE GORMAN-RUPP COMPANY • MANSFIELD, OHIO

GORMAN-RUPP OF CANADA LIMITED • ST. THOMAS, ONTARIO, CANADA Printed in U.S.A.

©Copyright by the Gorman-Rupp Company

December 29, 1998

REV. B 02/27/02

1 of 6

Page 10.3 A21.1

# 13A52-CH13 13A52-CH13 S/G

ACDEU

S/N 1157873 UP

## PUMP ISSUE 1

ITEM NO.	PART NAME	PART NUMBER	MAT'L CODE	QTY
1	PUMP END ASSY	13A52-(CH13)	---	1
2	STREET ELBOW	RS48	11999	1
3	KOHLER CH13PT ENGINE	29127-091	---	1
4	FLAT WASHER	K04	15991	2
5	HEX HD CAPSCREW	B0604	15991	4
6	LOCKWASHER	J06	15991	4
7	FLAT WASHER	K06	15991	4
8	COMBINATION BASE	41566-113	24150	1
9	HEX HD CAPSCREW	B0606	15991	2
10	FLAT WASHER	K06	15991	2
11	LOCKWASHER	J06	15991	4
12	HEX NUT	D06	15991	2
13	MUFFLER KIT	48222-005	---	1

### NOT SHOWN:

WARNING DECAL	2613FE	---	1
---------------	--------	-----	---

### OPTIONAL:

WHEEL KIT	GRP30-03D	---	1
-----------	-----------	-----	---

\* INDICATES PARTS RECOMMENDED FOR STOCK

## THE GORMAN-RUPP COMPANY • MANSFIELD, OHIO

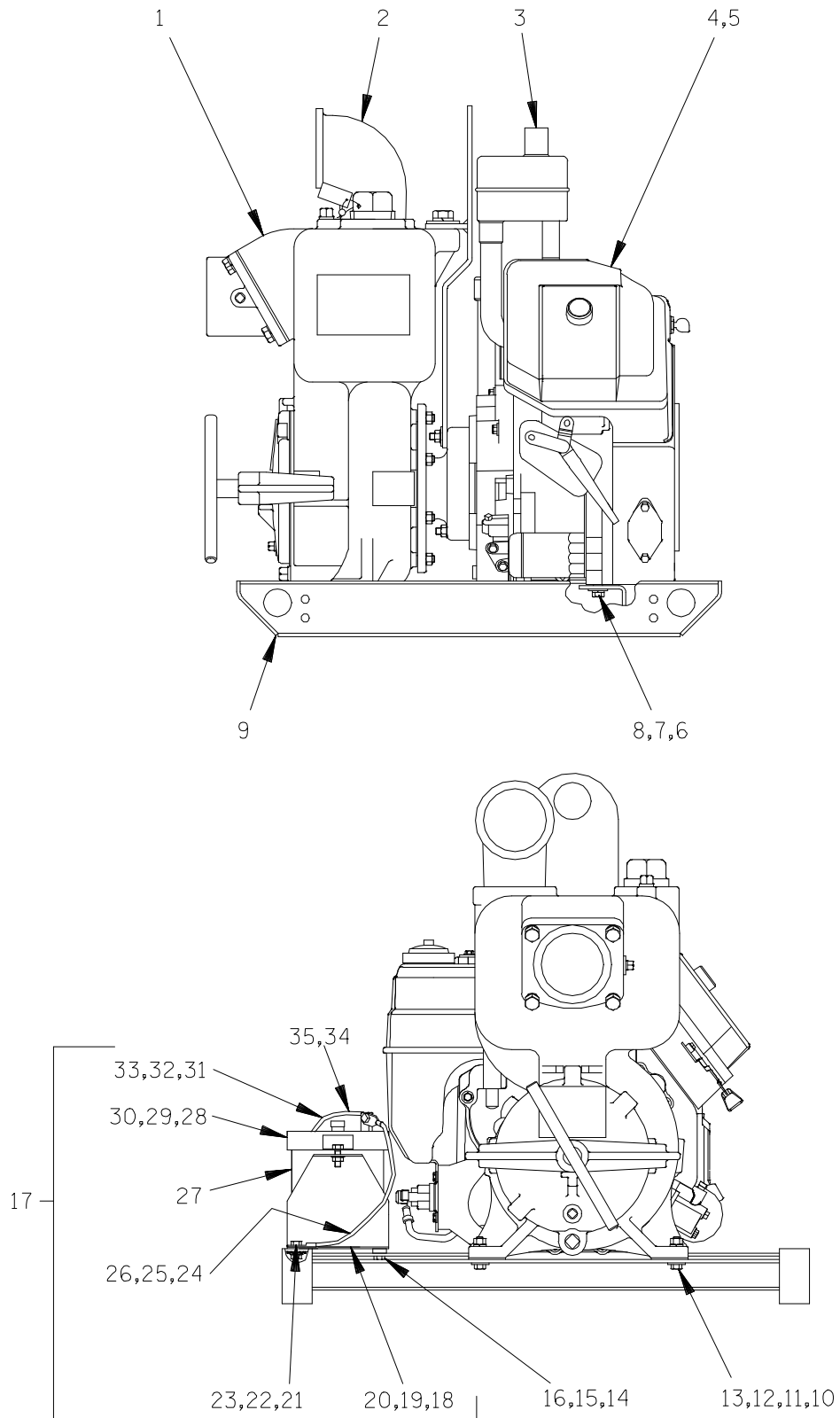
GORMAN-RUPP OF CANADA LIMITED • ST. THOMAS, ONTARIO, CANADA Printed in U.S.A.

©Copyright by the Gorman-Rupp Company

# 13A52-CH13 13A52-CH13 S/G

S/N 1157873 UP

PUMP ISSUE 1



## THE GORMAN-RUPP COMPANY • MANSFIELD, OHIO

GORMAN-RUPP OF CANADA LIMITED • ST. THOMAS, ONTARIO, CANADA Printed in U.S.A.

©Copyright by the Gorman-Rupp Company

December 29, 1998

REV. B 02/27/02

3 of 6

Page 10.3 A21.1

# 13A52-CH13 13A52-CH13 S/G

ACDEU

S/N 1157873 UP

## PUMP ISSUE 1

ITEM NO.	PART NAME	PART NUMBER	MAT'L CODE	QTY	ITEM NO.	PART NAME	PART NUMBER	MAT'L CODE	QTY
1	PUMP END ASSY	13A52-(CH13)	----	1	22	-FLANGED HEX NUT	21765-312	----	1
2	STREET ELBOW	RS48	11999	1	23	-T TYPE LOCKWASHER	BL05	15991	1
3	MUFFLER KIT	48222-005	----	1	24	-#4 START CABLE SUB	47311-542	----	1
4	KOHLER CH13 ENGINE	29127-092	----	1	25	-HEX HD CAPSCREW	B0503	15991	1
5	FLAT WASHER	K04	15991	2	26	-FLANGED HEX NUT	21765-312	----	1
6	HEX HD CAPSCREW	B0604	15991	2	27	-BATTERY	SEE OPTIONS		1
7	LOCKWASHER	J06	15991	2	28	-BATTERY BOX COVER	11870	24000	1
8	FLAT WASHER	K06	15991	2	29	-HEX HD CAPSCREW	B0504	15991	2
9	COMBINATION BASE	41566-113	24150	1	30	-FLANGED HEX NUT	21765-312	----	2
10	HEX HD CAPSCREW	B0606	15991	2	31	-HEX HD CAPSCREW	B0503	15991	1
11	FLAT WASHER	K06	15991	2	32	-FLANGED HEX NUT	21765-312	----	1
12	HEXNUT	D06	15991	2	33	BATTERY TAG	38818-680	----	1
13	LOCKWASHER	J06	15991	2	34	#4 START CABLE	47311-502	----	1
14	HEX HD CAPSCREW	B0504	15991	1	35	FLAT WASHER	K04	15991	1
15	SPACER	31131-072	13000	1					
16	FLANGED HEX NUT	21765-312	----	1		NOT SHOWN:			
17	BATTERY BOX ASSY	GRP40-05	----	1		WARNING DECAL	2613FE	----	1
18	-BATTERY BOX	11281	24000	1					
19	-HEX HD CAPSCREW	B0503	15991	1		OPTIONAL:			
20	-FLANGED HEX NUT	21765-312	----	1		BATTERY	S1680	----	1
21	-HEX HD CAPSCREW	B0503	15991	1		WHEEL KIT	GRP30-03D	----	1

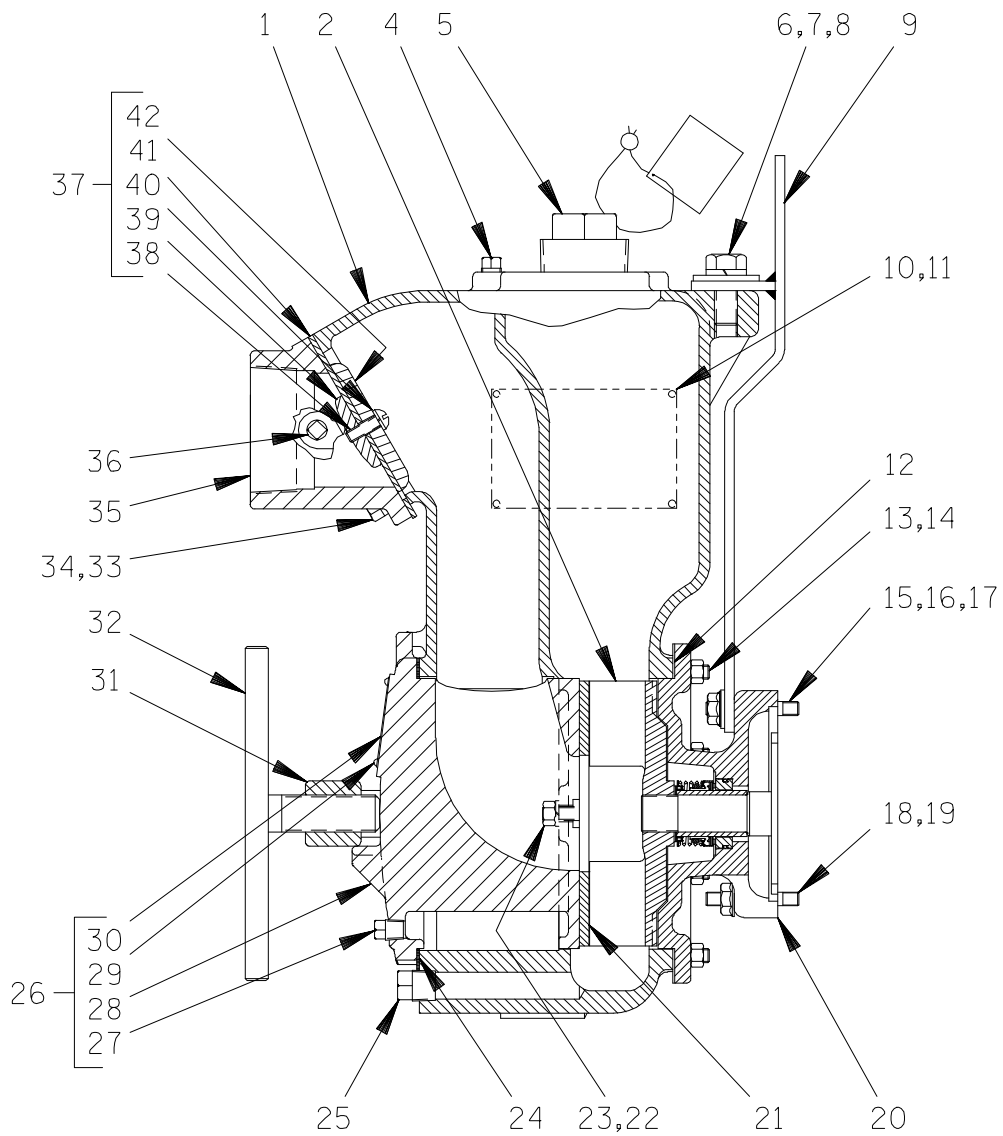
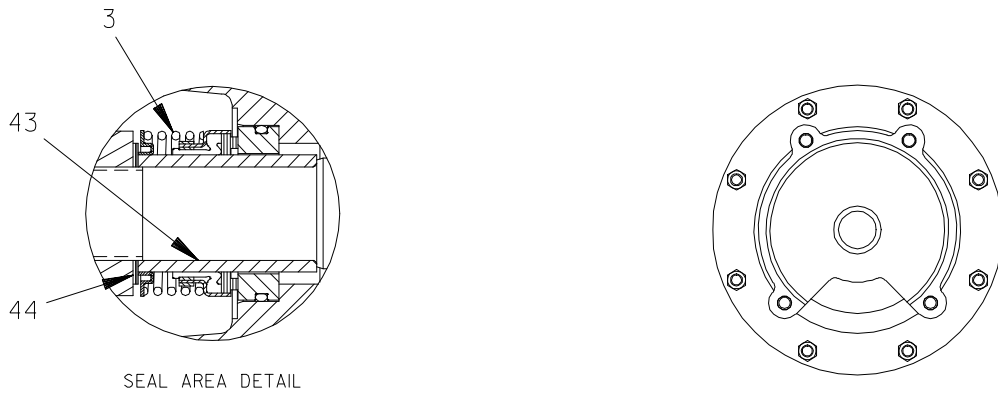
\* INDICATES PARTS RECOMMENDED FOR STOCK

## THE GORMAN-RUPP COMPANY • MANSFIELD, OHIO

GORMAN-RUPP OF CANADA LIMITED • ST. THOMAS, ONTARIO, CANADA Printed in U.S.A.

©Copyright by the Gorman-Rupp Company





**THE GORMAN-RUPP COMPANY • MANSFIELD, OHIO**

GORMAN-RUPP OF CANADA LIMITED • ST. THOMAS, ONTARIO, CANADA Printed in U.S.A.

©Copyright by the Gorman-Rupp Company

# 13A52-CH13 13A52-CH13 S/G

ACDEU

S/N 1157873 UP

## PUMP ISSUE 1

ITEM NO.	PART NAME	PART NUMBER	MAT'L CODE	QTY	ITEM NO.	PART NAME	PART NUMBER	MAT'L CODE	QTY
1	PUMP CASING	2985	10010	1	25	CASING DRAIN PLUG	P08	15079	1
2 *	IMPELLER	2996C	11010	1	26	COVER PLATE ASSY	42111-921	---	1
3 *	SEAL ASSY	25284-951	---	1	27	-PIPE PLUG	P04	15079	1
4	ACCESSORY PLUG	P04	15079	1	28	-BACK COVER PLATE	NOT AVAILABLE		1
5	FILL PLUG ASSY	48271-069	---	1	29	-DRIVE SCREW	BM#04-03	17000	4
6	HEX HD CAPSCREW	B1006	15991	1	30	-WARNING PLATE	2613EV	13990	1
7	FLAT WASHER	21161-442	---	1	31	CVR CLAMP BAR	2987	11010	1
8	LOCKWASHER	J10	15991	1	32	CLAMP BAR SCREW	2536	24000	1
9	HOISTING BAIL ASSY	44711-023	24150	1	33	HEX HD CAPSCREW	B0805	15991	4
10	NAME PLATE	38818-023	13990	1	34	LOCKWASHER	J08	15991	4
11	DRIVE SCREW	BM#04-03	17000	4	35	SUCTION FLANGE	2943	10010	1
12 *	CASING GSKT SET	3G	18000	1	36	PIPE PLUG	P04	15079	1
13	STUD	C0606	15991	8	37	CHECK VALVE ASSY	1348	---	1
14	HEX NUT	D06	15991	8	38	-RD HD MACH SCREW	X0504	17090	1
15	STUD	C0610	15991	2	39 *	-VALVE WEIGHT	2944	10010	1
16	FLAT WASHER	K06	15991	2	40	-LOCKWASHER	J05	17090	1
17	HEX NUT WITH FLANGE	21765-314	---	2	41 *	-CHECK VALVE GSKT	1348G	19070	1
18	STUD	C0609	15991	2	42 *	-VALVE WEIGHT	18B	10010	1
19	HEX NUT WITH FLANGE	21765-314	---	2	43 *	SHAFT SLEEVE	31413-086	16000	1
20	INTERMEDIATE	38264-328	10010	1	44 *	IMP ADJ SHIM SET	2X	17090	1
21 *	WEAR PLATE ASSY	2634A	15990	1		NOT SHOWN:			
22	HEX NUT	D06	15991	2		STRAINER	4917	24001	1
23	LOCKWASHER	J06	15991	2					
24 *	COVER PLATE GSKT	2985G	19090	1					

\* INDICATES PARTS RECOMMENDED FOR STOCK

## THE GORMAN-RUPP COMPANY • MANSFIELD, OHIO

GORMAN-RUPP OF CANADA LIMITED • ST. THOMAS, ONTARIO, CANADA Printed in U.S.A.

©Copyright by the Gorman-Rupp Company

## WARRANTY

Pumping units manufactured by The Gorman-Rupp Company, Mansfield, Ohio are guaranteed to be free from defects in material and workmanship for one year from date of shipment from factory in Mansfield, Ohio. The obligation under this Warranty, statutory or otherwise, is limited to replacement or repair at Mansfield, Ohio factory or at a point designated by Gorman-Rupp, of such part as shall appear to us upon inspection at such point, to have been defective in material or workmanship.

This Warranty does not obligate The Gorman-Rupp Company to bear the cost of labor or transportation charges in connection with replacement or repair of defective parts; nor shall it apply to a pump upon which repairs or alterations have been made unless authorized by Gorman-Rupp.

No warranty is made in respect to engines, motors, or trade accessories, such being subject to warranties of their respective manufacturers.

In Submersible Pumps, pump and motor are integral and Submersibles are warranted as a unit. Since motor is subject to an important degree upon quality and performance of electrical controls, unit warranty is valid only when controls have been specified and provided by Gorman-Rupp.

No express implied or statutory warranty, other than herein set forth is made or authorized to be made by Gorman-Rupp.

In no event shall The Gorman-Rupp Company be liable for consequential damages or contingent liabilities arising out of the failure of any Gorman-Rupp pump or parts thereof to operate properly.

THE GORMAN-RUPP COMPANY  
Mansfield, Ohio

NOTE: In Canada, all above references to "The Gorman-Rupp Company, Mansfield, Ohio" is understood to mean "Gorman-Rupp of Canada Limited, St. Thomas, Ontario."

**THE GORMAN-RUPP COMPANY • MANSFIELD, OHIO**

**GORMAN-RUPP OF CANADA LIMITED • ST. THOMAS, ONTARIO, CANADA** Printed in U.S.A.